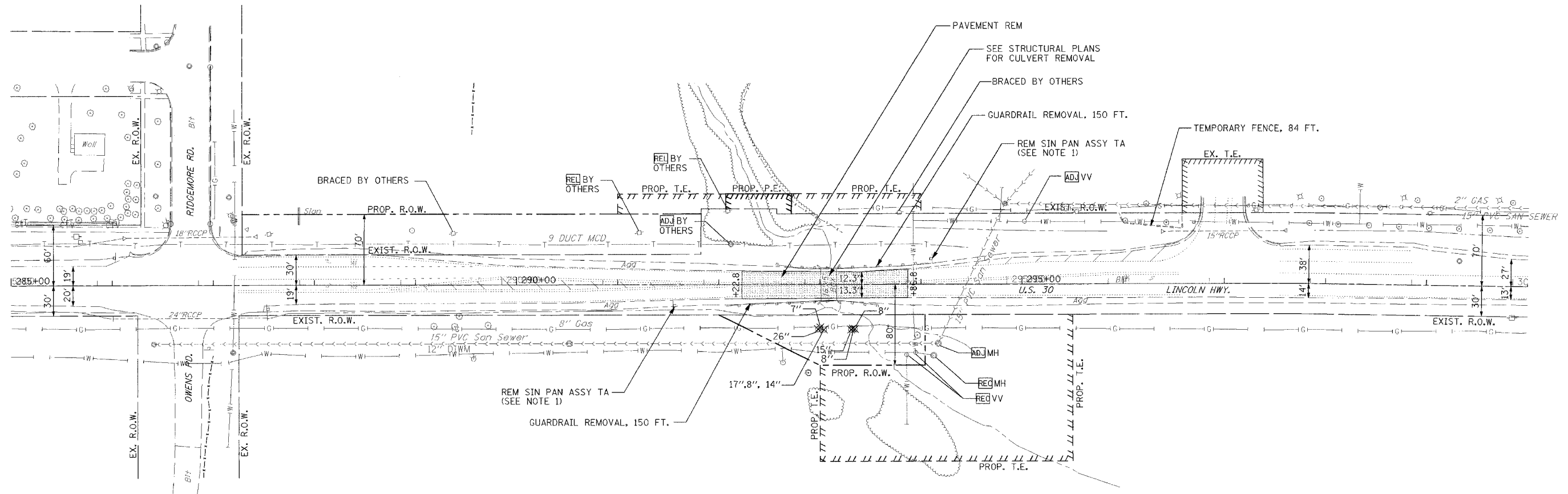


F.A.P. RTE.	SECTION	COUNTY	TOTAL SHEETS	SHEET NO
353	(12&13) T-1	WILL	53	7
STA.	TO STA.			



**NOTES:**

1. EXISTING SIGN PANEL ASSEMBLY TYPE A TO BE REMOVED AFTER CULVERT IS CONSTRUCTED. EXISTING SIGN PANEL SHOWN BELOW:

WEIGHT LIMIT  
10 TONS AXLE  
40 TONS GROSS

2. ALL SAWCUTS SHALL BE INCIDENTAL TO THE RESPECTIVE REMOVAL ITEM.

**TREE REMOVAL SCHEDULE**

STATION	OFFSET		TREE SIZE (dbh)
292+97.93	44.36	RT	26
293+00.31	42.73	RT	7
293+04.02	44.80	RT	8
293+04.02	44.80	RT	17
293+04.02	44.80	RT	14
293+30.73	44.73	RT	15
293+32.30	43.86	RT	8
293+34.40	44.21	RT	8

**LEGEND**

- PAVEMENT REMOVAL
- ITEM TO BE ADJUSTED
- ITEM TO BE RELOCATED
- ITEM TO BE RECONSTRUCTED
- TREE REMOVAL, OF THE DIAMETER SPECIFIED
- TEMPORARY FENCE

REVISIONS	
NAME	DATE

ILLINOIS DEPARTMENT OF TRANSPORTATION  
 U.S. RTE. 30 OVER STREAM  
 0.3 MI. W. OF WOLF RD.  
 REMOVAL PLAN  
 STA. 285+00 TO STA. 300+00  
 SCALE : 1" = 50'      DRAWN BY : BAE  
 DATE : 06/17/05      CHECKED BY : GB