

F.A.P. RTE.	SECTION	COUNTY	TOTAL SHEETS	SHEET NO.
353	(12&13)T-1	WILL	56	1

STATE OF ILLINOIS  
DEPARTMENT OF TRANSPORTATION  
DIVISION OF HIGHWAYS  
**PROPOSED  
HIGHWAY PLANS**

FOR INDEX OF SHEETS, SEE SHEET NO. 2

PROJECT IS LOCATED IN VILLAGE OF MOKENA

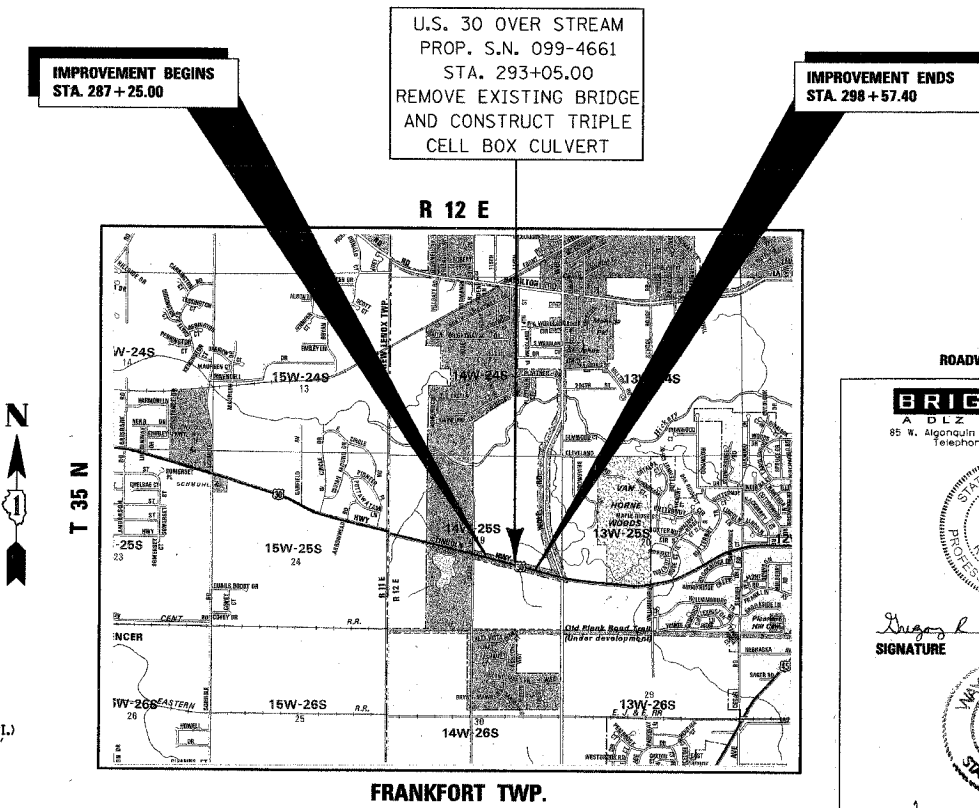
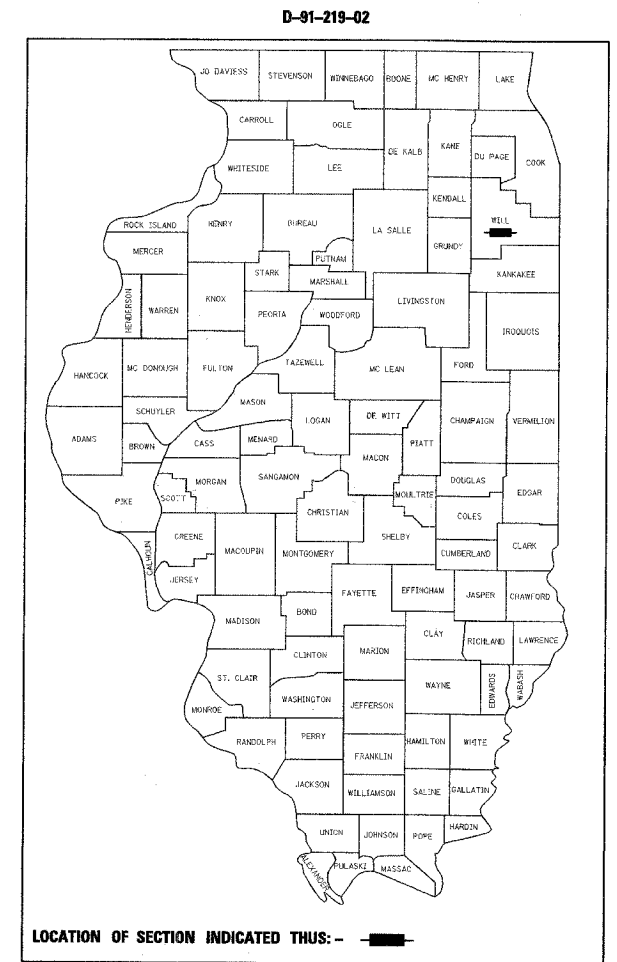
**DESIGN DESIGNATION**

2,340 (20) OTHER PRINCIPAL ARTERIAL 4.27 (FD-20)

**TRAFFIC DATA**

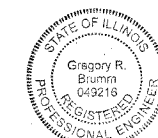
U.S. RTE 30	ADT (2000)	DESIGN SPEED	POSTED SPEED
GARFIELD TO WOLF	16,000	50	50

F.A.P. 353 (U.S. ROUTE 30)  
SECTION: (12 & 13) T-1  
OVER STREAM 0.3 MI. W. OF WOLF RD.  
BRIDGE REPLACEMENT  
~~PROJECT-~~  
**WILL COUNTY**  
**C-91-101-05**



ROADWAY & STRUCTURES DESIGNED BY

**BRIGHTON A & E, INC.**  
A D.E.C. COMPANY  
85 W. Algonquin Road • Suite 220 • Arlington Heights, IL 60005  
Telephone (847) 640-0840 • Fax (847) 640-0856



*Gregory R. Brumm*  
SIGNATURE

SEAL  
11-30-05  
EXPIRES



*Wayne A. Trex*  
SIGNATURE

SEAL  
11-30-06  
EXPIRES

STATE OF ILLINOIS  
DEPARTMENT OF TRANSPORTATION  
DIVISION OF HIGHWAYS

SUBMITTED June 15, 20 05

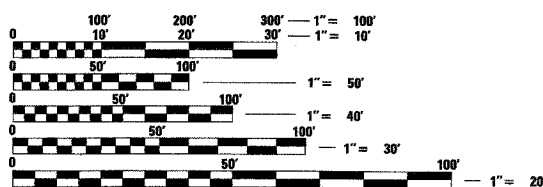
*Dina O'Keefe* / AP DISTRICT ENGINEER

August 19, 20 05  
*Mike Hine* / PD ENGINEER OF DESIGN AND ENVIRONMENT

August 19, 20 05  
*Victor Mader* / PD DIRECTOR, DIVISION OF HIGHWAYS

**PRINTED BY THE AUTHORITY  
OF THE STATE OF ILLINOIS**

CONSULTANT SERVICES SECTION DISTRICT ONE - DESIGN / MANAR NASHIF (847) 705-4523



FULL SIZE PLANS HAVE BEEN PREPARED USING STANDARD ENGINEERING SCALES. REDUCED SIZED PLANS WILL NOT CONFORM TO STANDARD SCALES. IN MAKING MEASUREMENTS ON REDUCED PLANS, THE ABOVE SCALES MAY BE USED.

J.U.L.I.E.  
JOINT UTILITY LOCATION INFORMATION FOR EXCAVATION  
1-800-892-0123

CONTRACT NO. 62901