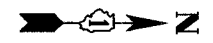


DATE TIME  
 02/28/2005 10:58:11 AM

CONTRACT NO. 62871

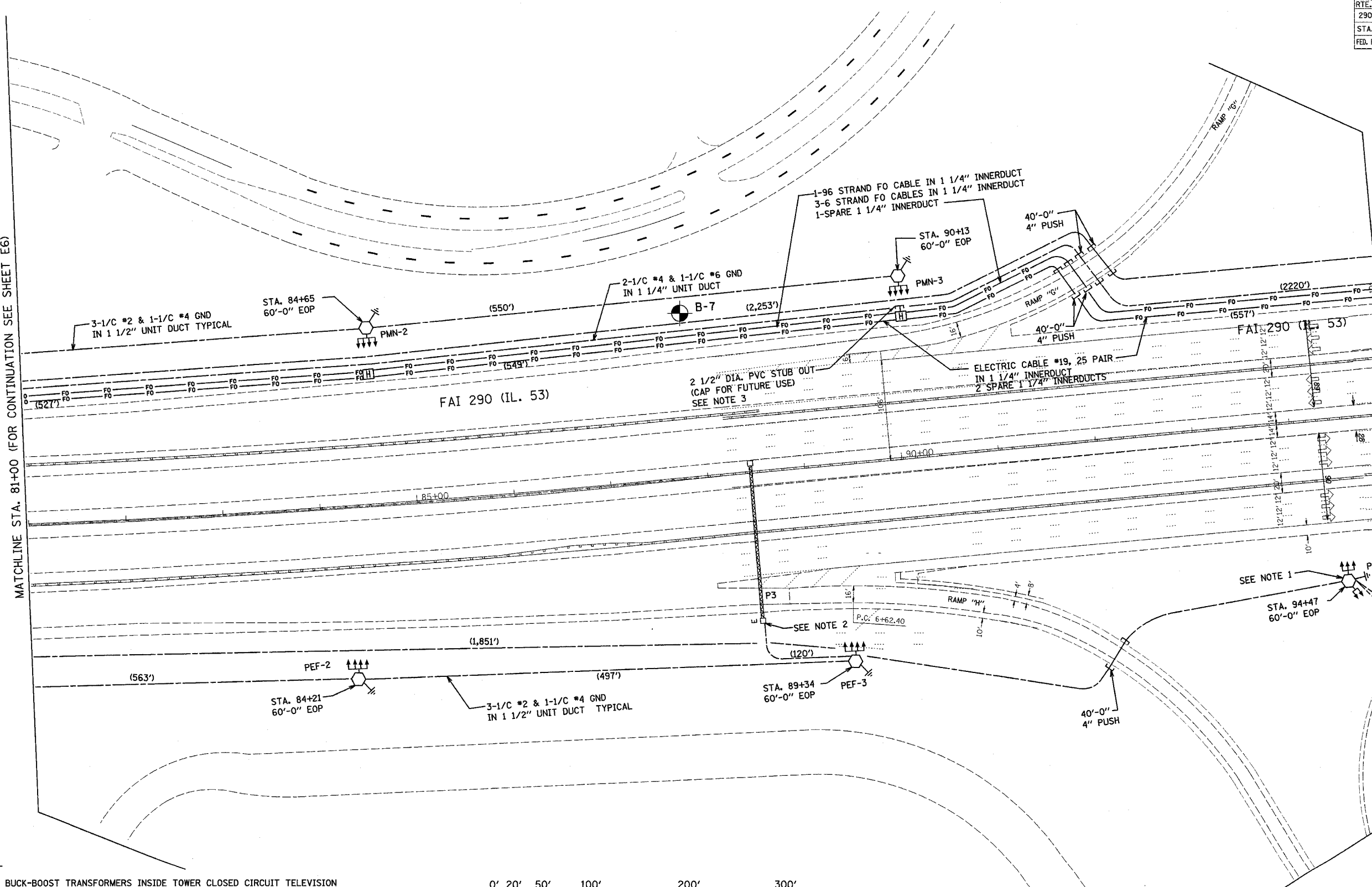
F.A.I. RTE.	SECTION	COUNTY	TOTAL SHEETS	SHEET NO.
290	0305-302K-1-3	COOK		20
STA.		TO STA.		
FED. ROAD DIST. NO.		ILLINOIS FED. AID PROJECT		



MATCHLINE STA. 81+00 (FOR CONTINUATION SEE SHEET E6)

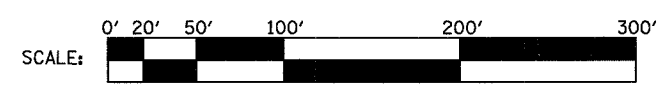
MATCHLINE STA. 95+00 (FOR CONTINUATION SEE SHEET E8)

MATCHLINE STA. 95+00 (FOR CONTINUATION SEE SHEET E9)



**NOTES:**

1. MOUNT BUCK-BOOST TRANSFORMERS INSIDE TOWER CLOSED CIRCUIT TELEVISION CABINET. CONNECT IN ACCORDANCE WITH CIRCUIT DIAGRAM, SHEET E12.
2. REMOVE EXISTING STEP-DOWN TRANSFORMERS. EXTEND SIGN LUMINAIRE CIRCUITS TO LOAD SIDE OF EXISTING DISCONNECT SWITCH. CONNECT LINE SIDE OF EXISTING DISCONNECT SWITCH TO PROPOSED LIGHTING CIRCUIT IN ACCORDANCE WITH CIRCUIT DIAGRAM, SHEET E12.
3. PVC STUB OUT AND ALL OTHER ASSOCIATED MATERIAL AND LABOR IS INCLUDED UNDER PAY ITEM FOR HANDHOLE.



PLOT DATE = 02/28/2005  
 FILE NAME = 0305-302K-1-3  
 PLOT SCALE = AS SHOWN  
 REFERENCE = #REF#

**HOH** HARRY O. HETTER - ASSOCIATES, INC.  
 DESIGN AND CONSULTING ENGINEERS  
 85 E. Jackson Blvd.  
 Chicago, Illinois 60604  
 312/346-8131

PROJECT NO. 2672  
 G:\PROJECTS\2672\0305\FINAL\_04\_01\_05\SEGMENT 1\LIGHTING

REVISIONS	
NAME	DATE

ILLINOIS DEPARTMENT OF TRANSPORTATION

**LIGHTING PLAN**  
 ILLINOIS ROUTE 53

SCALE: VERT. 1"=50'  
 HORIZ. 1"=50'

DATE 02-28-2005

DRAWN BY MEK  
 CHECKED BY RER

E7