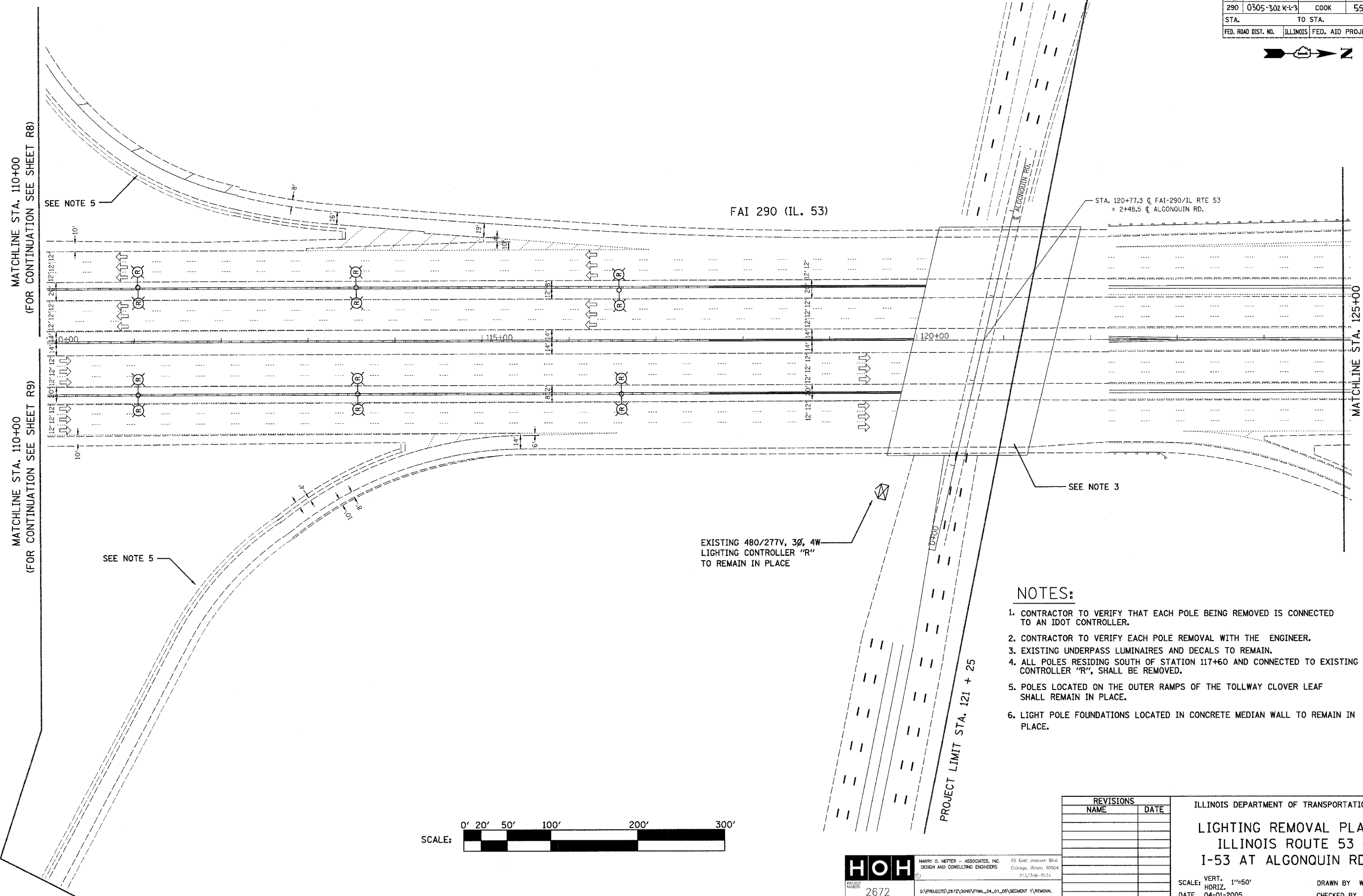
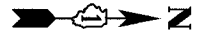


DATE-TIME  
PROJECT NO.  
USER

CONTRACT NO. 287

F.A.I. RTE.	SECTION	COUNTY	TOTAL SHEETS	SHEET NO.
290	0305-302 K-L-3	COOK	55	13
STA.	TO STA.			
FED. ROAD DIST. NO.	ILLINOIS	FED. AID PROJECT		



MATCHLINE STA. 110+00  
(FOR CONTINUATION SEE SHEET R8)

MATCHLINE STA. 110+00  
(FOR CONTINUATION SEE SHEET R9)

MATCHLINE STA. 125+00

**NOTES:**

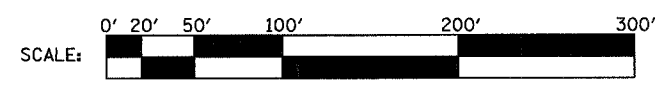
1. CONTRACTOR TO VERIFY THAT EACH POLE BEING REMOVED IS CONNECTED TO AN IDOT CONTROLLER.
2. CONTRACTOR TO VERIFY EACH POLE REMOVAL WITH THE ENGINEER.
3. EXISTING UNDERPASS LUMINAIRES AND DECALS TO REMAIN.
4. ALL POLES RESIDING SOUTH OF STATION 117+60 AND CONNECTED TO EXISTING CONTROLLER "R", SHALL BE REMOVED.
5. POLES LOCATED ON THE OUTER RAMPS OF THE TOLLWAY CLOVER LEAF SHALL REMAIN IN PLACE.
6. LIGHT POLE FOUNDATIONS LOCATED IN CONCRETE MEDIAN WALL TO REMAIN IN PLACE.

EXISTING 480/277V, 3Ø, 4W  
LIGHTING CONTROLLER "R"  
TO REMAIN IN PLACE

REVISIONS	
NAME	DATE

ILLINOIS DEPARTMENT OF TRANSPORTATION  
**LIGHTING REMOVAL PLAN**  
**ILLINOIS ROUTE 53**  
**I-53 AT ALGONQUIN RD.**

SCALE: VERT. 1"=50'  
HORIZ. DATE 04-01-2005  
DRAWN BY WDF  
CHECKED BY RER



**HOH**  
HARRY O. HEFTER - ASSOCIATES, INC.  
DESIGN AND CONSULTING ENGINEERS  
95 East Madison Blvd.  
Chicago, Illinois 60604  
312/346-9131

PROJECT NUMBER: 2672  
G:\PROJECTS\2672\0005\FINAL\_04\_01\_05\05\05\REMOVAL

PLOT DATE = 4/7/2005  
FILE NAME = #FILE#  
PLOT SCALE = #SCALE#  
REFERENCE = #REF#

R10