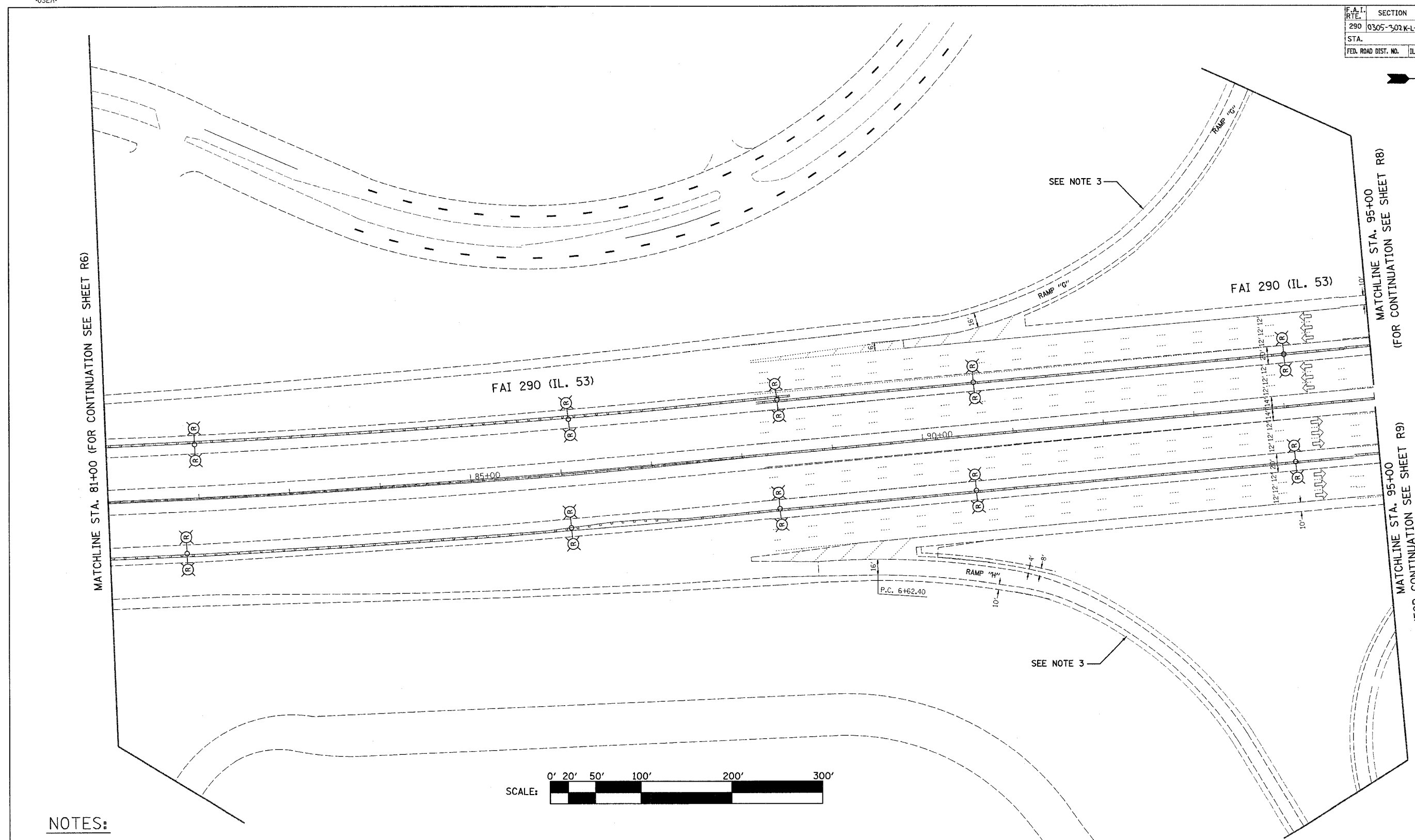


DATE-TIME
DESIGNED BY
USER

CONTRACT NO. 0287

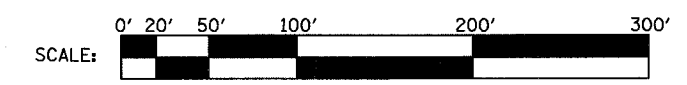
F.A.I. RTE.	SECTION	COUNTY	TOTAL SHEETS	SHEET NO.
290	0305-302K-L-3	COOK	55	10
STA. TO STA.		ILLINOIS FED. AID PROJECT		
FED. ROAD DIST. NO.		ILLINOIS FED. AID PROJECT		



MATCHLINE STA. 81+00 (FOR CONTINUATION SEE SHEET R6)

MATCHLINE STA. 95+00 (FOR CONTINUATION SEE SHEET R8)

MATCHLINE STA. 95+00 (FOR CONTINUATION SEE SHEET R9)



NOTES:

1. CONTRACTOR TO VERIFY THAT EACH POLE BEING REMOVED IS CONNECTED TO AN IDOT CONTROLLER.
2. CONTRACTOR TO VERIFY EACH POLE REMOVAL WITH THE ENGINEER.
3. POLES LOCATED ON THE OUTER RAMPS OF THE TOLLWAY CLOVER LEAF SHALL REMAIN IN PLACE.
4. ALL POLES CONNECTED TO EXISTING CONTROLLER "P", SHALL BE REMOVED.
5. LIGHT POLE FOUNDATIONS LOCATED IN CONCRETE MEDIAN WALL TO REMAIN IN PLACE.

PLOT DATE = 4/7/2005
FILE NAME = #TILE#
PLOT SCALE = #SCALE#
REFERENCE = #REF#

HOH HARRY O. HETTER - ASSOCIATES, INC. 35 East Jackson Blvd.
DESIGN AND CONSULTING ENGINEERS Chicago, Illinois 60604
312/248-8131

PROJECT NO. 2672
G:\PROJECTS\2672\00HS\FINAL_04_01_05\06MEDIAN 1\REMOVAL

REVISIONS	
NAME	DATE

ILLINOIS DEPARTMENT OF TRANSPORTATION

LIGHTING REMOVAL PLAN
ILLINOIS ROUTE 53

SCALE: VERT. 1"=50'
HORIZ. 1"=100'

DATE 04-01-2005

DRAWN BY WDF
CHECKED BY RER

R7