

**BILL OF MATERIAL**

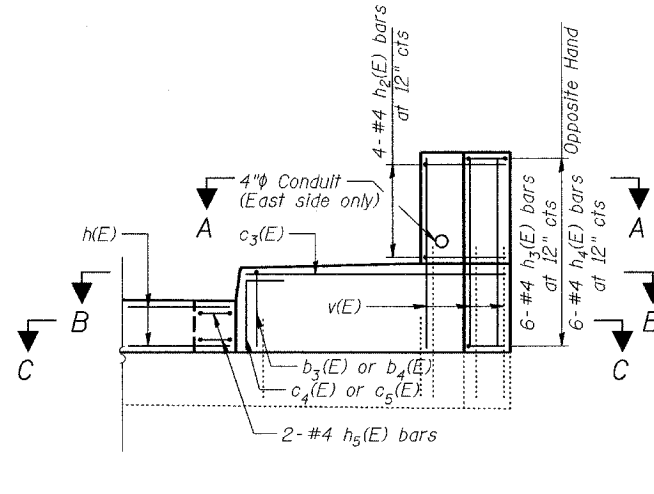
| Bar                              | No.   | Size     | Length | Shape |
|----------------------------------|-------|----------|--------|-------|
| c <sub>3</sub> (E)               | 8     | #5       | 7'-0"  |       |
| c <sub>4</sub> (E)               | 4     | #5       | 2'-10" |       |
| c <sub>5</sub> (E)               | 4     | #5       | 2'-6"  |       |
| b <sub>3</sub> (E)               | 10    | #5       | 4'-9"  |       |
| b <sub>4</sub> (E)               | 10    | #5       | 4'-1"  |       |
| h(E)                             | 12    | #6       | 14'-8" |       |
| h <sub>1</sub> (E)               | 6     | #6       | 27'-8" |       |
| h <sub>2</sub> (E)               | 16    | #4       | 5'-3"  |       |
| h <sub>3</sub> (E)               | 12    | #4       | 7'-3"  |       |
| h <sub>4</sub> (E)               | 12    | #4       | 5'-11" |       |
| h <sub>5</sub> (E)               | 8     | #4       | 4'-7"  |       |
| v(E)                             | 20    | #6       | 5'-0"  |       |
| Item                             | Unit  | Quantity |        |       |
| Concrete Superstructure          | Cu Yd | 12.7     |        |       |
| Reinforcement Bars, Epoxy Coated | Pound | 1,030    |        |       |
| Bar Splicers                     | Each  | 12       |        |       |

Reinforcement bars designated (E) shall be Epoxy Coated.

STATE OF ILLINOIS  
DEPARTMENT OF TRANSPORTATION

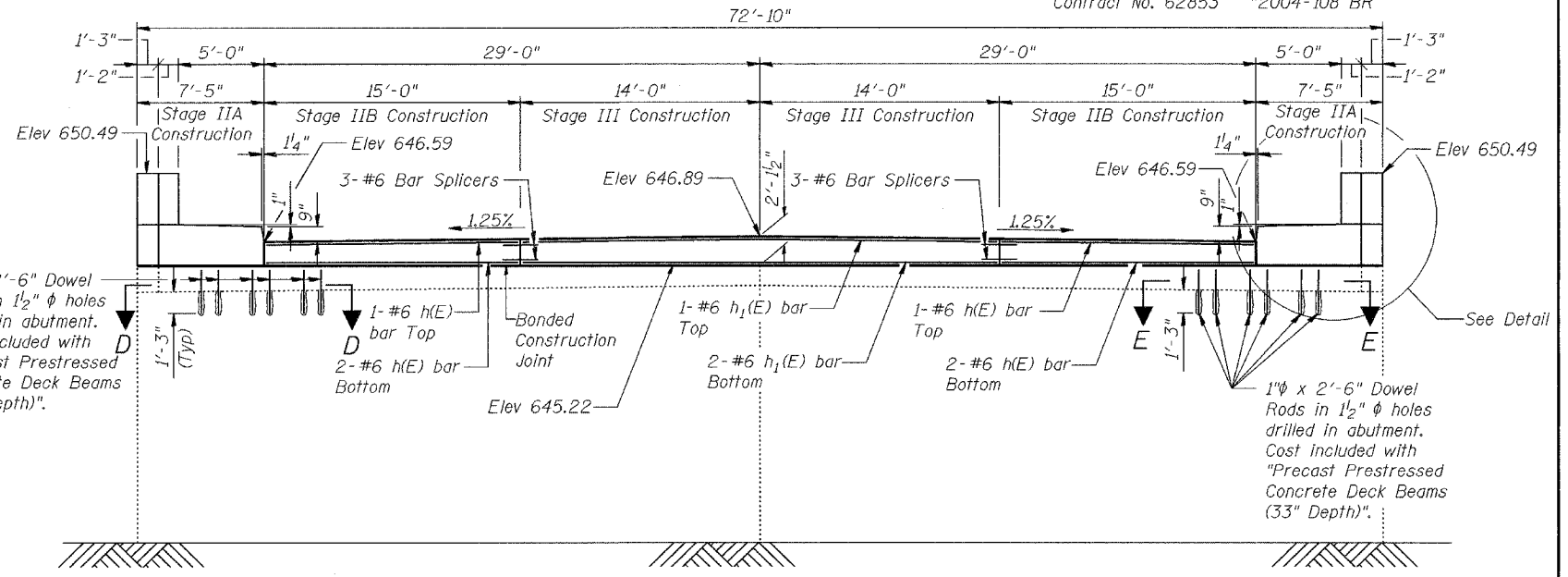
| ROUTE NO. | SECTION | COUNTY | DATE | SHEET NO. | SHEET NO. |
|-----------|---------|--------|------|-----------|-----------|
| FAP 305   | *       | Cook   | 72   | 71        | 14 SHEETS |

Contract No. 62853 \*2004-108 BR

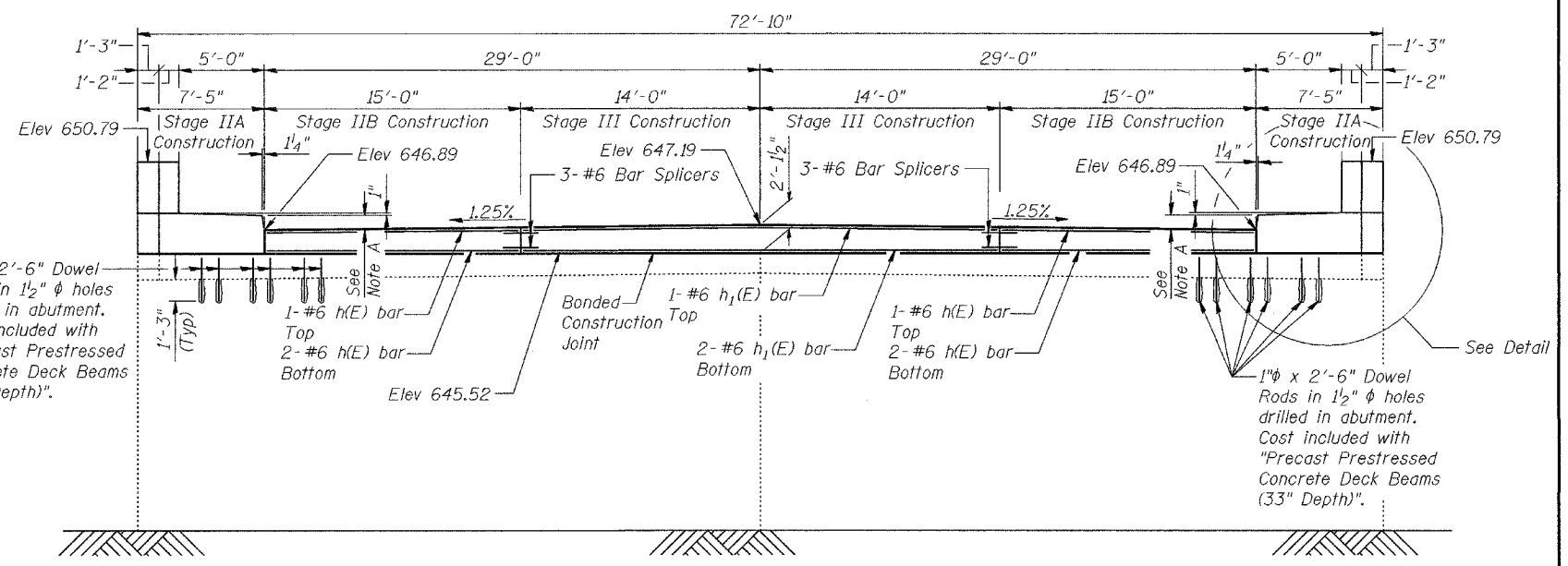


**DETAIL**

1" x 2'-6" Dowel Rods in 1/2" holes drilled in abutment. Cost included with "Precast Prestressed Concrete Deck Beams (33" Depth)".



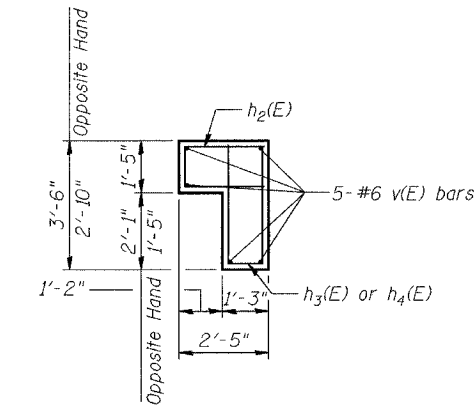
**NORTH ABUTMENT ELEVATION**  
(Looking North)



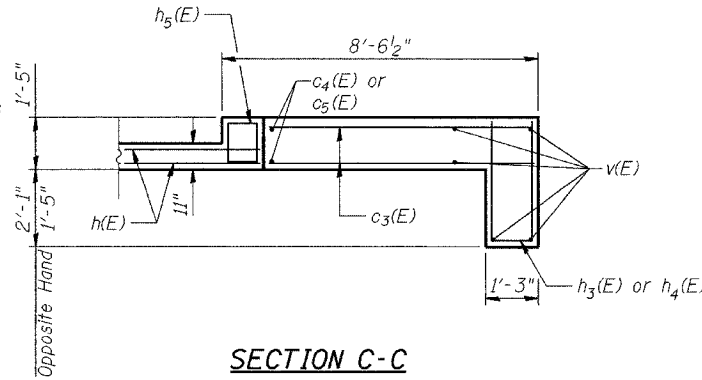
**SOUTH ABUTMENT ELEVATION**  
(Looking South)

Note A: Varies from 5" @ Sta 949+64.58 to 6 1/2" @ Sta 949+66.0

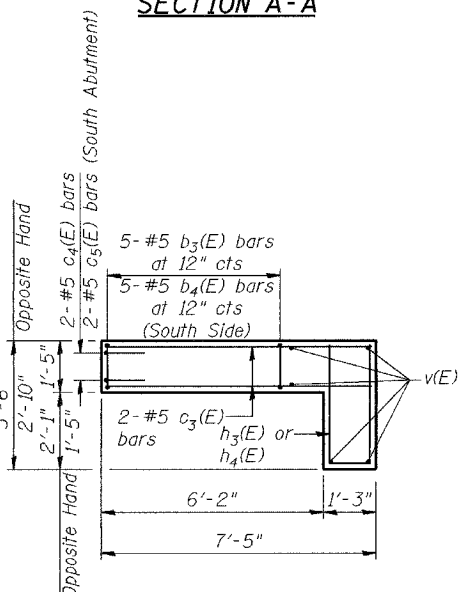
Note:  
For section thru Hatch Block  
See Sheet 6



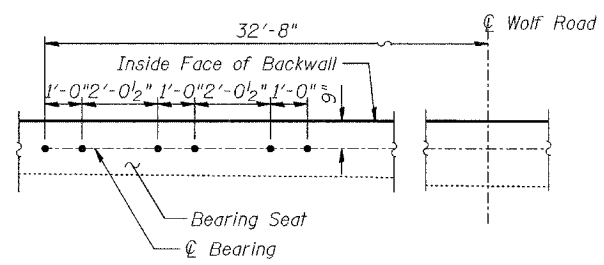
**SECTION A-A**



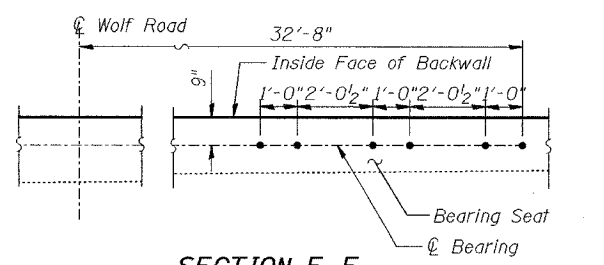
**SECTION C-C**



**SECTION B-B**



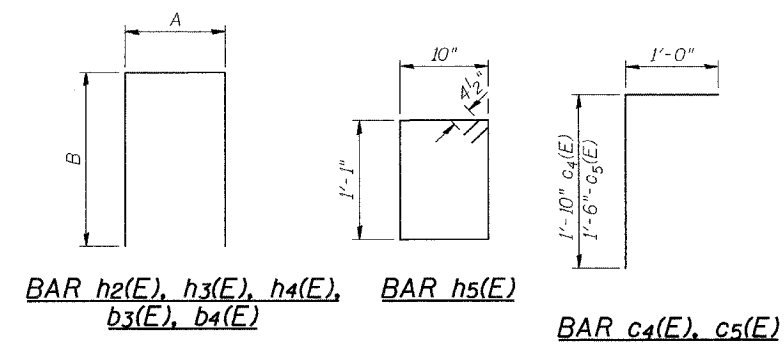
**SECTION D-D**  
(South Abutment similar)



**SECTION E-E**  
(South Abutment similar)

**BAR DIMENSIONS**

| Bar Name           | A     | B      |
|--------------------|-------|--------|
| h <sub>2</sub> (E) | 1'-1" | 2'-1"  |
| h <sub>3</sub> (E) | 11"   | 3'-2"  |
| h <sub>4</sub> (E) | 11"   | 2'-6"  |
| b <sub>3</sub> (E) | 1'-1" | 1'-10" |
| b <sub>4</sub> (E) | 1'-1" | 1'-6"  |



|          |     |
|----------|-----|
| DESIGNED | BPS |
| CHECKED  | KFA |
| DRAWN    | BPS |
| CHECKED  | GSP |

**ABUTMENTS**  
**WOLF RD. OVER PALATINE RD.**  
**F.A.P. RTE. 305 SECT. 2004-108 BR**  
**COOK COUNTY**  
**STATION**  
**STRUCTURE NO. 016-0680**