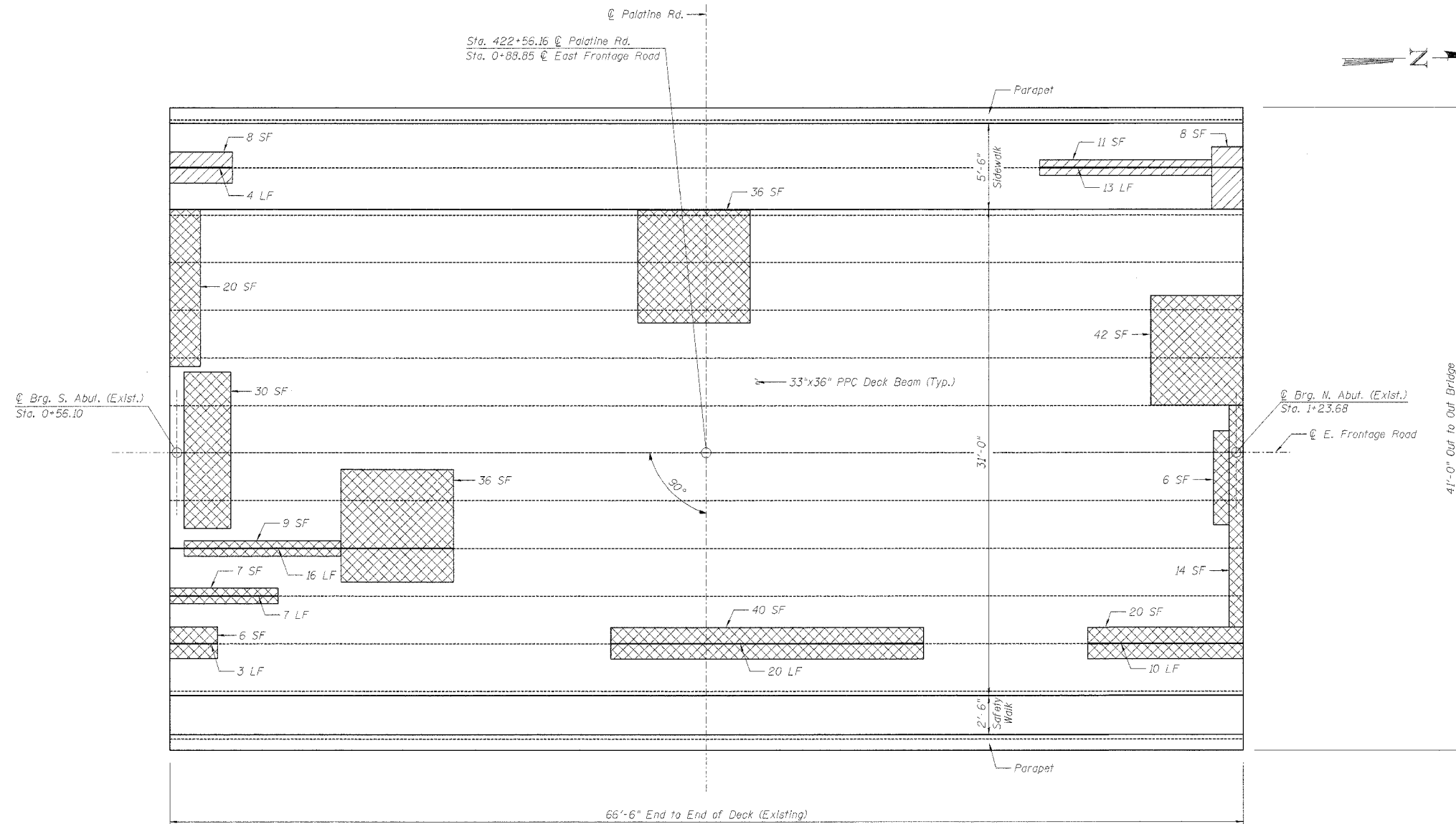


STATE OF ILLINOIS
DEPARTMENT OF TRANSPORTATION

ROUTE NO.	SECTION	COUNTY	TOTAL SHEETS	SHEET NO.	SHEET NO. 3
S.B.L. P.A.P. 305	*	COOK	72	49	7 SHEETS
*2004-108 BR			Contract No. 62853		



PLAN OF CONCRETE DECK BEAM REPAIRS
TOP VIEW

LEGEND

- Surveyed Area Showing Possible Delamination of Top of Beam
- Surveyed Sidewalk Area Requiring Full Depth Repair
- Surveyed Length of Keyway Repair

NOTES

Repair areas shown are the surveyed areas of deterioration. The actual area to be repaired shall be as directed by the Engineer.

Variations in the quantities shall not be cause for additional compensation, however, the Contractor will be paid for the quantity actually furnished at the unit price bid for the work.

Contractor must exercise extreme care while doing sidewalk repairs so as not to damage the PPC Deck Beams.

Surveyed areas that show possible delamination should be investigated after removal of the bituminous overlay. Any areas with delamination extending to the top mat of reinforcement on the beam shall be cleaned of any loose concrete and filled back up with the concrete overlay. Any area where the damage extends below the top mat of reinforcement on the beam shall be brought to the attention of the Bureau of Bridges and Structures for further disposition. Work included in the cost of "Concrete Wearing Surface."

BILL OF MATERIAL

Item	Unit	Quantity
Bridge Sidewalk Repair (Full Depth)	Sq. Ft.	27
Keyway Repair	Foot	73

Survey Date: December 1992

BRANCO & ZROKA ENGINEERING, P.C.

DESIGNED	LAS
CHECKED	DAZ
DRAWN	SAW
CHECKED	LAS

February 2005

CONCRETE DECK BEAM REPAIRS
EAST FRONTAGE ROAD OVER PALATINE ROAD
FAP 305/PALATINE ROAD
SECTION 2004-108 BR
COOK COUNTY
STA. 0+88.85
STRUCTURE NO. 016-2529