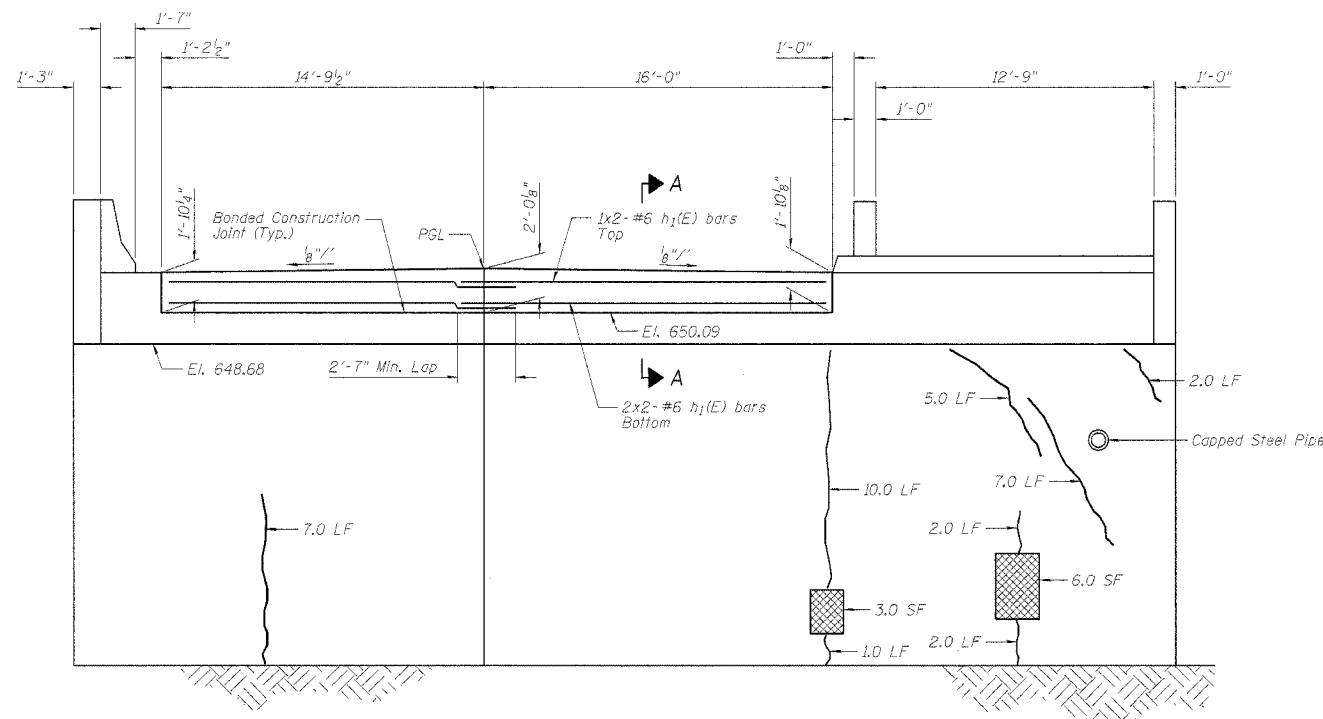
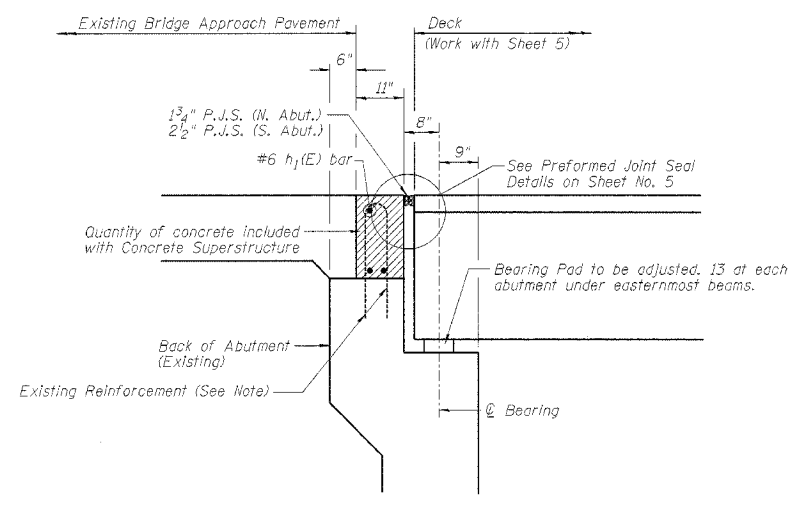


STATE OF ILLINOIS
DEPARTMENT OF TRANSPORTATION

ROUTE NO.	SECTION	COUNTY	TOTAL SHEETS	SHEET NO.	SHEET NO. 6
S.R.L. P. A. P. 305	*	COOK	72	46	6 SHEETS
*2004-108 BR			Contract No. 62853		



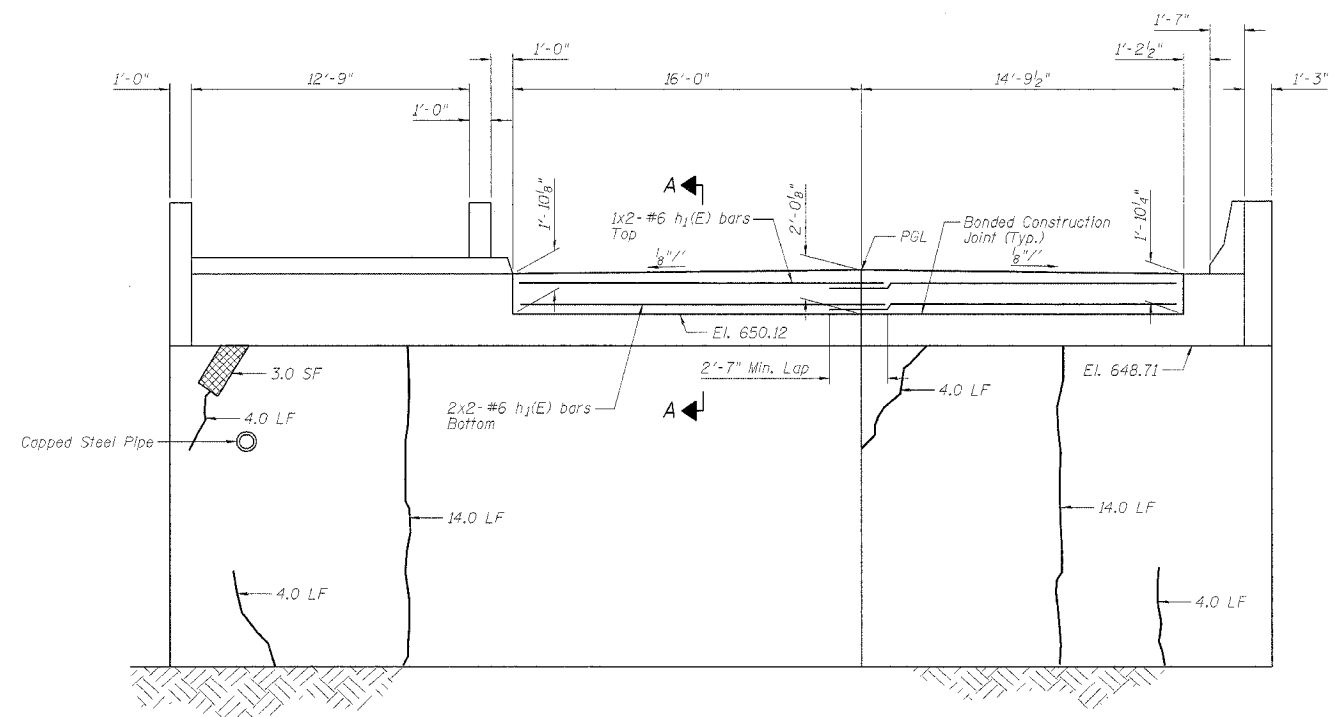
NORTH ABUTMENT ELEVATION



SECTION A-A

Existing Reinforcement extending into removed areas shall be blast cleaned, straightened and incorporated into new construction. Cost included with "Concrete Removal." Any reinforcement bars that are damaged during concrete removal shall be replaced with an approved bar splicer or anchorage system. Cost included with "Concrete Removal."

LEGEND
 Surveyed Area Requiring Formed Concrete Repair (Depth <5")
 Surveyed Length Requiring Epoxy Crack Sealing



SOUTH ABUTMENT ELEVATION

BILL OF MATERIAL

Bar	No.	Size	Length	Shape
h ₁ (E)	12	#6	16'-8"	—
Item	Unit	Quantity		
Concrete Superstructure	Cu. Yd.	4.0		
Epoxy Crack Sealing	Foot	120		
Reinforcement Bars, Epoxy Coated	Pound	300		
Formed Concrete Repair (Depth Equal to or Less Than 5")	Sq. Ft.	30		
Formed Concrete Repair (Depth Larger Than 5")	Sq. Ft.	10		

NOTES
 Reinforcement bars designated (E) shall be epoxy coated.
 Bars indicated thus: 1x2-#6 etc., indicates 1 line of bars with 2 lengths per line.
 Survey Date: October 1992
 Repair areas shown are the surveyed areas of deterioration. The actual area to be repaired shall be as directed by the Engineer.
 Variations in the quantities shall not be cause for additional compensation, however, the Contractor will be paid for the quantity actually furnished at the unit price bid for the work.

BRANCO & ZROKA ENGINEERING, P.C.
 DESIGNED LAS
 CHECKED DAZ
 DRAWN SAW
 CHECKED LAS
 February 2005

ABUTMENT REPAIR
 WEST FRONTAGE ROAD OVER PALATINE ROAD
 FAP 305/PALATINE ROAD
 SECTION 2004-108 BR
 COOK COUNTY
 STA. 0+88.97
 STRUCTURE NO. 016-2530