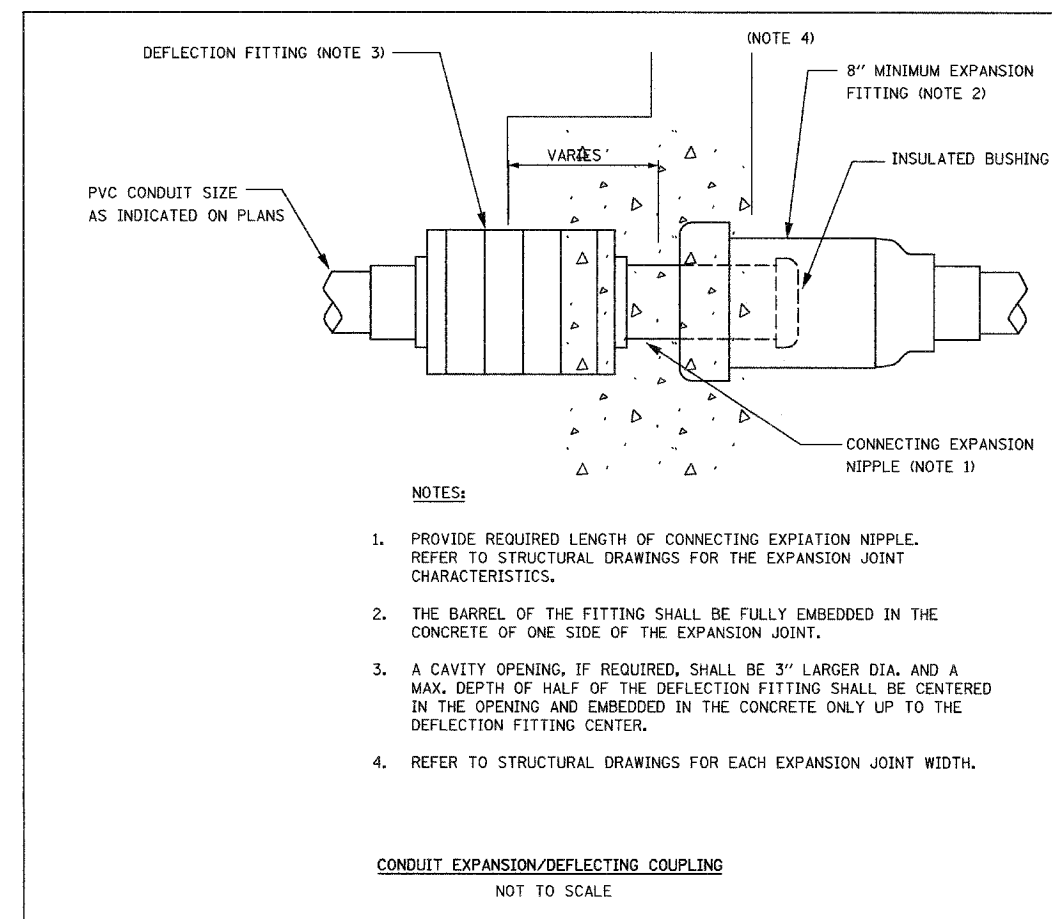
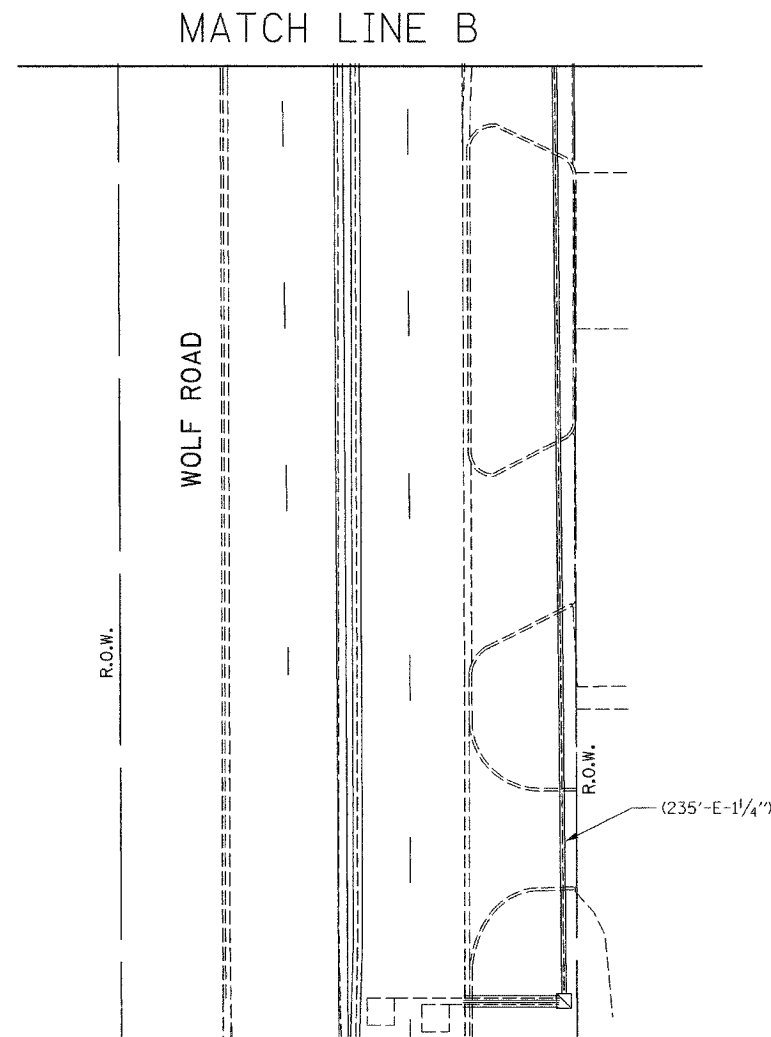
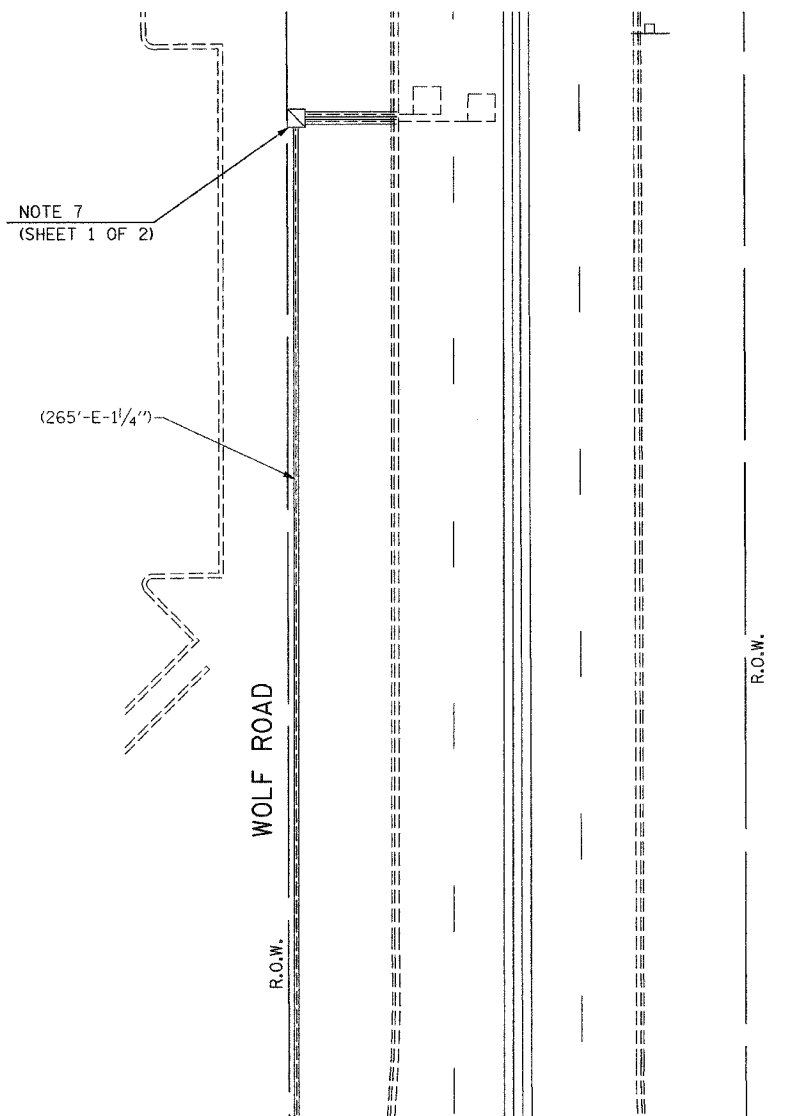
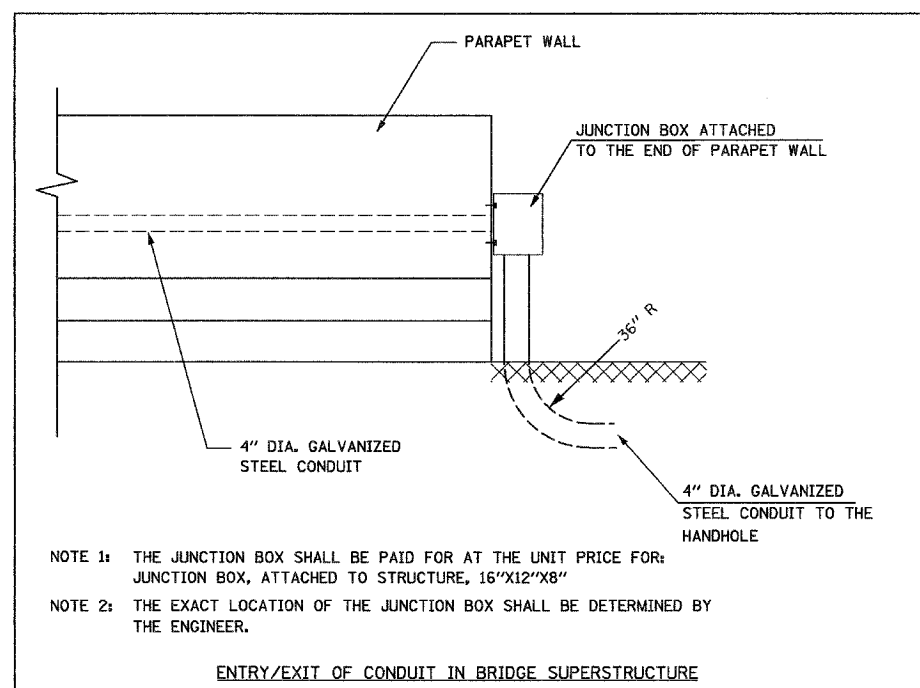


RTE.	SECTION	COUNTY	TOTAL SHEETS	SHEET NO.
305	2004-108-PR	38 COOK	72	38
STA.	TO STA.			
FED. ROAD DIST. NO.	ILLINOIS	FED. AID PROJECT:		
CONTRACT NO. 62853				



MATCH LINE A



go GANDHI AND ASSOCIATES, INC.
ENGINEERS AND PLANNERS
6035 N. NORTHWEST HIGHWAY
SUITE 306
CHICAGO, ILLINOIS 60631 TEL. (773) 774-590

J:\projects\projects 2000\palatine\signal plans (november 2004)\wolf\09-wolf\southphoto_ext1st2.dgn
09 MAR 2005
19:33:33

REVISIONS	
NAME	DATE

ILLINOIS DEPARTMENT OF TRANSPORTATION
PALATINE ROAD: WISCONSIN CENTRAL RR TO
US 45/ILL 21 (Milwaukee Ave.)
EXISTING TRAFFIC SIGNAL PLAN MODIFICATION
WOLF ROAD AT EAST AND WESTBOUND
FRONTAGE ROADS TO AND FROM PALATINE ROAD
SHEET 2 OF 2

SCALE: 1"=20'
DATE: 01/14/2005

DRAWN BY: JF/BC
DESIGNED BY: PKG/RRM
CHECKED BY: PKG/RRM