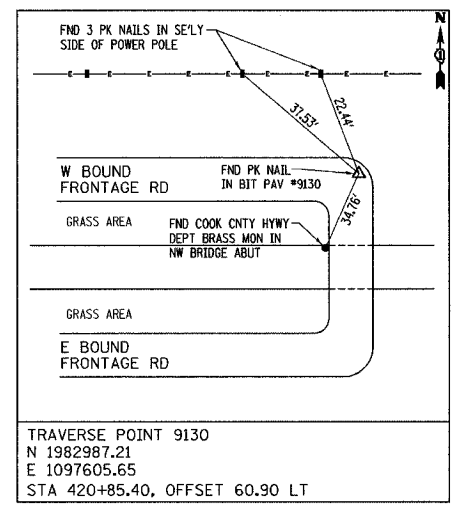
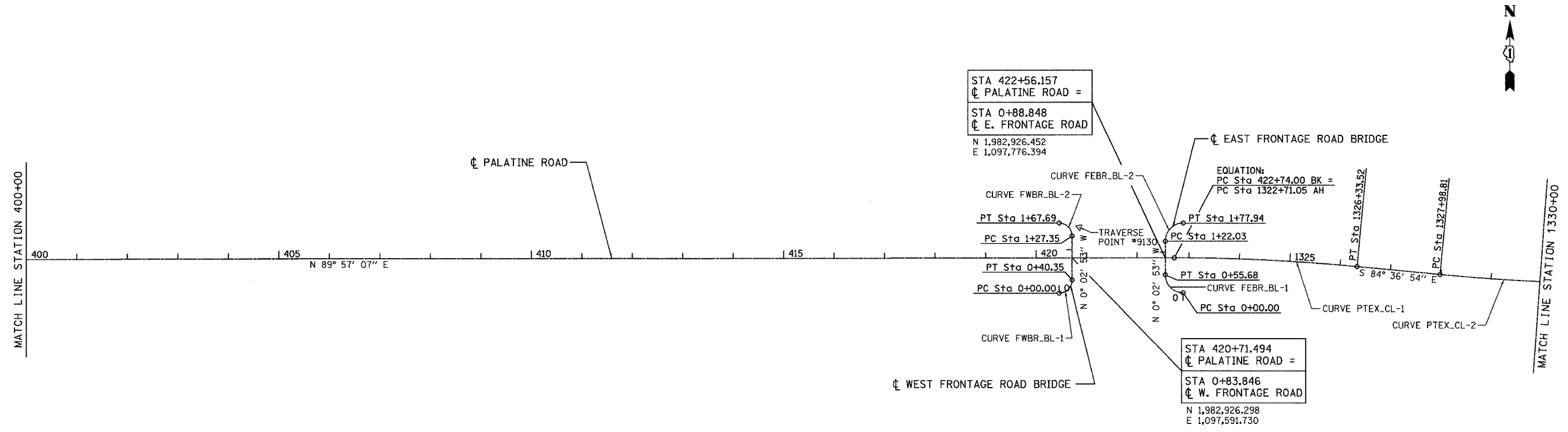


F.A.P. RTE.	SECTION	COUNTY	TOTAL SHEETS	SHEET NO.
305	2004-108 BR	COOK	72	12

CONTRACT NO. 62878

Prop. Curve FWBR.BL-2 PI Sta. 1+52.86 $\Delta = 88^\circ 54' 36''$ (LT) $D = 220^\circ 22' 06''$ $T = 25.51'$ $R = 26.00'$ $L = 40.35'$ $E = 10.42'$ PC Sta. 1+27.35 PT Sta. 1+67.69	Prop. Curve FWBR.BL-1 PI Sta. 0+25.51 $\Delta = 88^\circ 54' 36''$ (LT) $D = 220^\circ 22' 06''$ $T = 25.51'$ $R = 26.00'$ $L = 40.35'$ $E = 10.42'$ PC Sta. 0+00.00 PT Sta. 0+40.35	Prop. Curve FEBR.BL-1 PI Sta. 0+35.14 $\Delta = 88^\circ 36' 36''$ (RT) $D = 159^\circ 09' 18''$ $T = 35.14'$ $R = 36.00'$ $L = 55.68'$ $E = 14.31'$ PC Sta. 0+00.00 PT Sta. 0+55.68	Prop. Curve FEBR.BL-2 PI Sta. 1+57.40 $\Delta = 88^\circ 58' 47''$ (RT) $D = 159^\circ 09' 18''$ $T = 35.36'$ $R = 36.00'$ $L = 55.91'$ $E = 14.46'$ PC Sta. 1+22.03 PT Sta. 1+77.94	Prop. Curve PTEX.CL-1 PI Sta. 1324+52.42 $\Delta = 5^\circ 25' 59''$ (RT) $D = 1^\circ 29' 56''$ $T = 181.37'$ $R = 3,822.50'$ $L = 362.46'$ $E = 4.30'$ PC Sta. 1322+71.05 PT Sta. 1326+33.52	Prop. Curve PTEX.CL-2 PI Sta. 1329+71.24 $\Delta = 4^\circ 59' 07''$ (LT) $D = 1^\circ 26' 47''$ $T = 172.43'$ $R = 3,961.00'$ $L = 344.64'$ $E = 3.75'$ PC Sta. 1327+98.81 PT Sta. 1331+43.46
---	---	---	---	---	---



REVISIONS	
NAME	DATE

ILLINOIS DEPARTMENT OF TRANSPORTATION
 PALATINE ROAD UNDER WCRB, UNDER W. FRONTAGE RD.,
 UNDER E. FRONTAGE RD. & UNDER WOLF RD.

**PALATINE ROAD
 ALIGNMENT AND TIE PLAN**

SCALE: 1"=100'
 DATE: 02/05

DRAWN BY: ACE/CAD
 CHECKED BY: TAE

AMERICAN
 CONSULTING ENGINEERS

... \BES PalatineRoad\B... 02/05/2005 08:46:10 AM