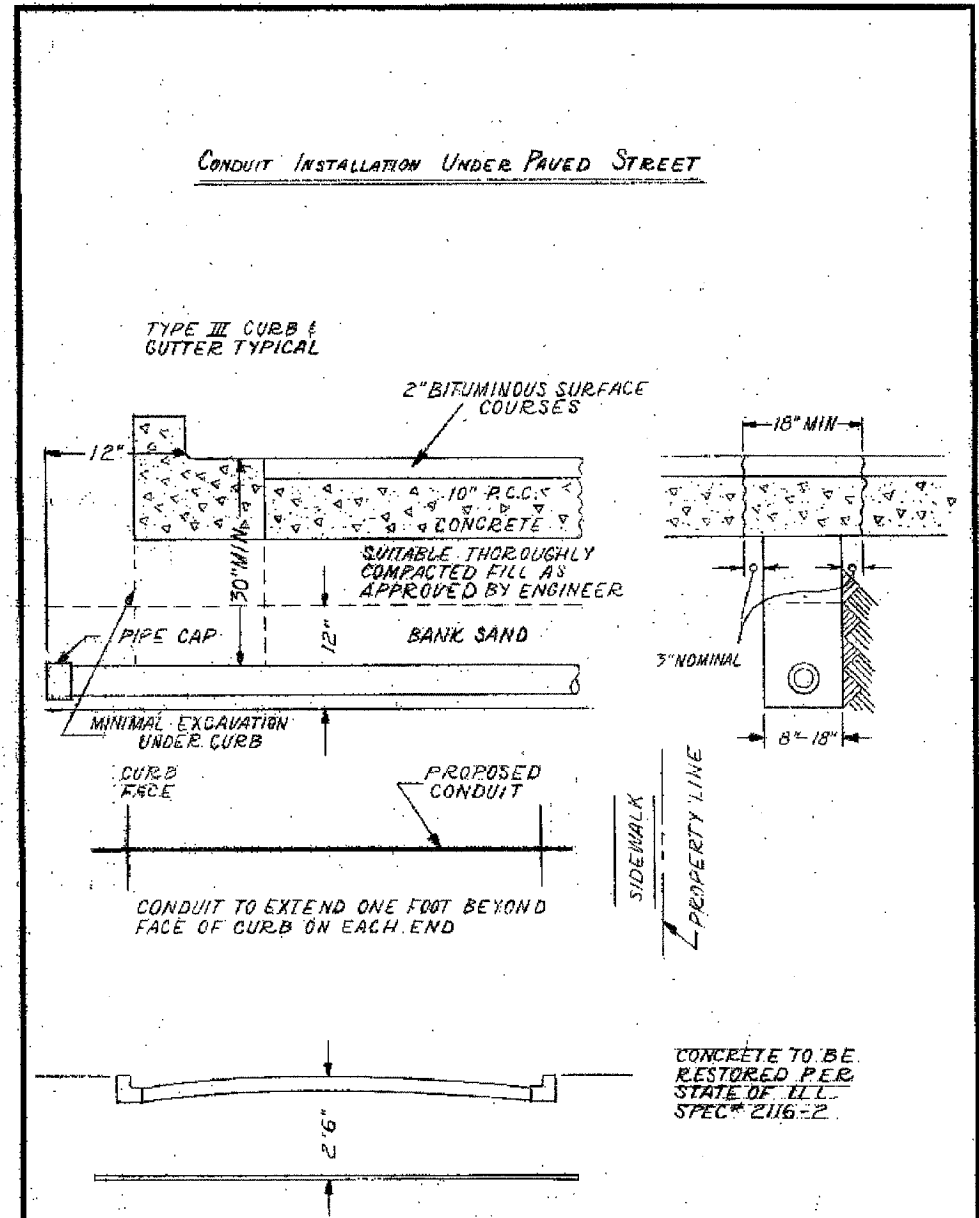

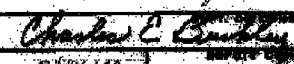


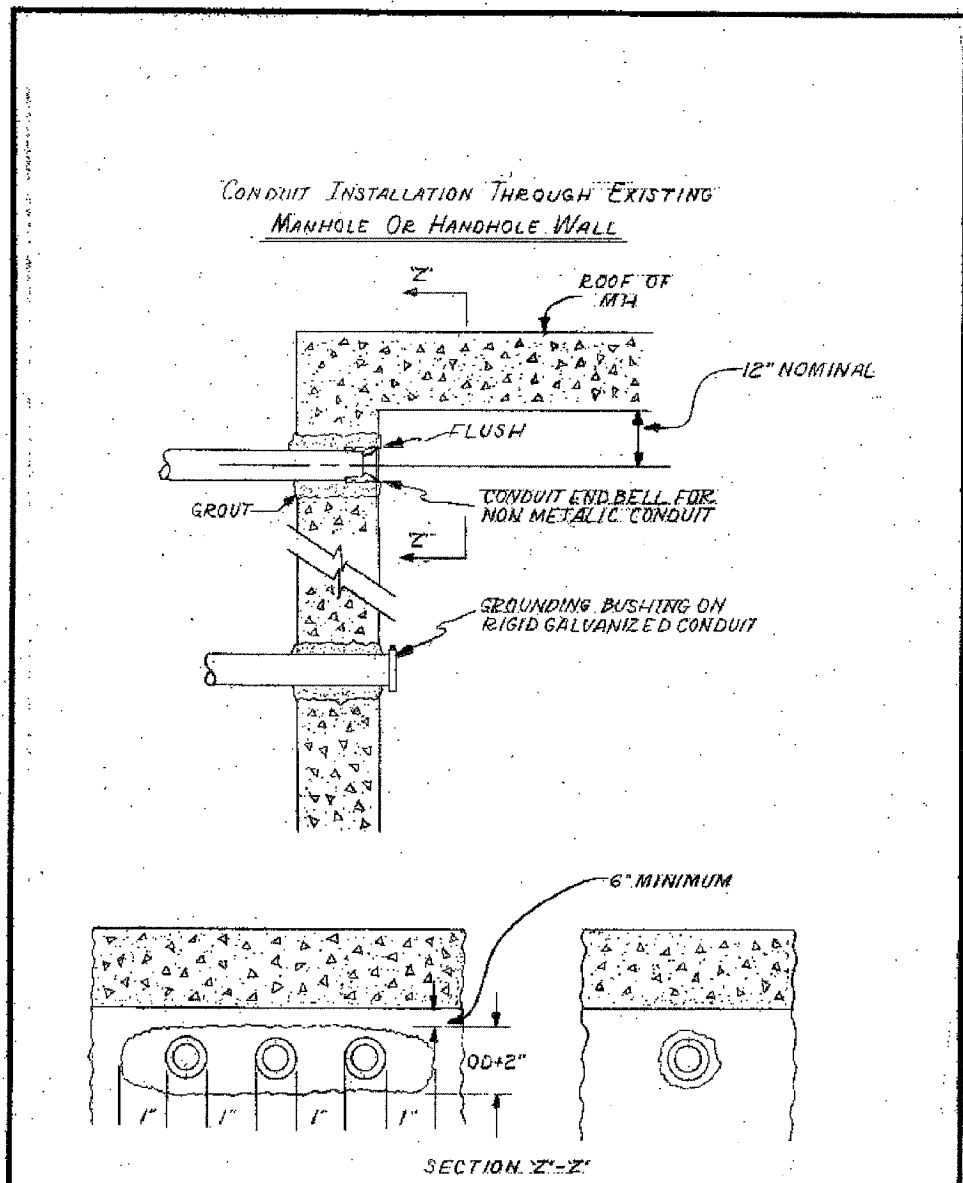
F.A.I. RTE.	SECTION	COUNTY	TOTAL SHEETS	SHEET NO.
90/94	2004-067L	COOK	35	30
STA.	TO STA.			
FED. ROAD DIST. NO. 1 ILLINOIS FED. AID PROJECT				
62806				



**INSTALLATION METHOD OF
INSTALLING CONDUIT UNDER
PAVED ROADWAY**


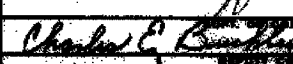
CITY OF CHICAGO
DEPT. OF STREETS AND SANITATION
BUREAU OF ELECTRICITY
DIVISION OF ELECTRICAL ENGINEERING

DRAWN A.M. JOHNSON	CHECKED R. SYCOWSKI	ENGINEER R.L. MARTIN
 THOMAS WILDER ENGINEER OF ELECTRICITY		813 DESK NO.
 CHARLES E. BENTLEY SUPERVISOR		85' X 14" SCALE



**INSTALLATION METHOD OF
INSTALLING CONDUIT THRU
MANHOLE WALL**

CITY OF CHICAGO
DEPT. OF STREETS AND SANITATION
BUREAU OF ELECTRICITY
DIVISION OF ELECTRICAL ENGINEERING

DRAWN A.M. JOHNSON	CHECKED R. SYCOWSKI	ENGINEER R.L. MARTIN
 THOMAS WILDER ENGINEER OF ELECTRICITY		814 DESK NO.
 CHARLES E. BENTLEY SUPERVISOR		85' X 14" SCALE

OPENING THROUGH WALL TO BE KEPT TO MINIMUM SIZE TO ADMIT CONDUIT AND SUFFICIENT GROUT TO ASSURE SEALING WALL.

REVISIONS	
NAME	DATE

02/02/2005 09:02:33 AM \\c:\tech\m\p\0468\p\0468\elec\N4-cml\9\sh\contract\912\boe09120022a.dwg