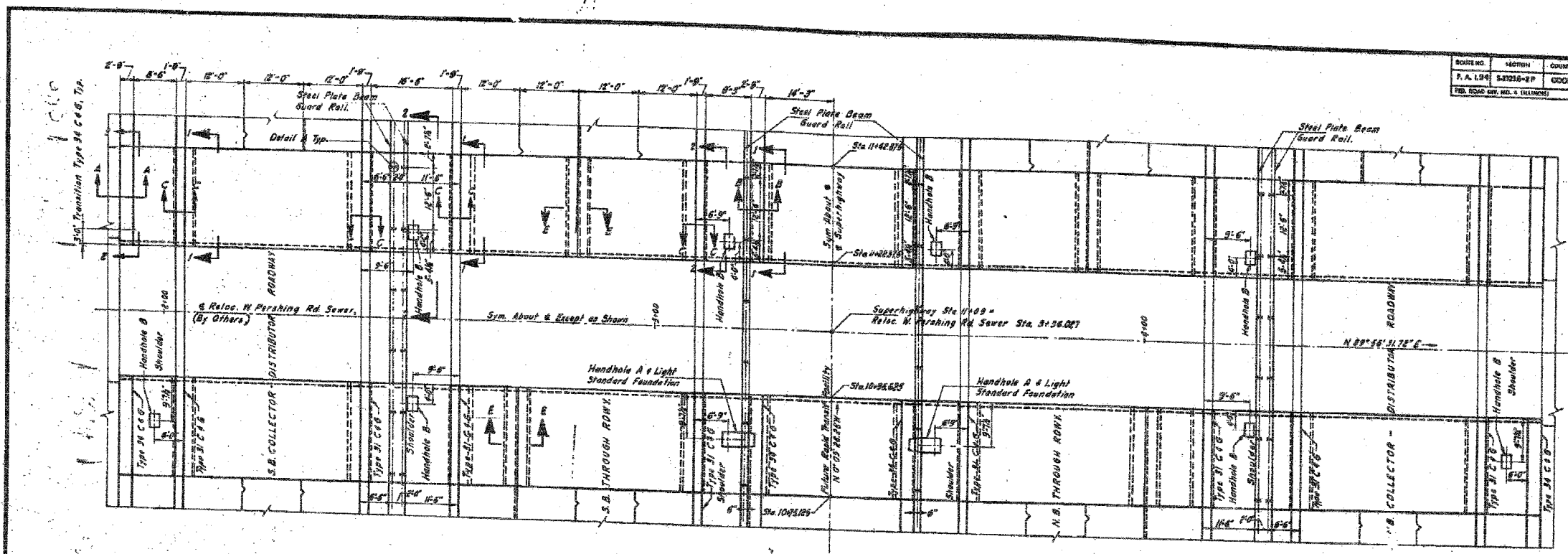
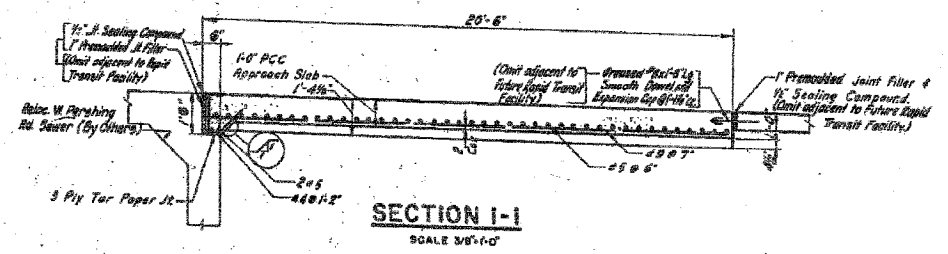


F.A.I.	SECTION	COUNTY	TOTAL SHEETS	SHEET NO.
94/90		COOK	598	488
STA.		TO STA.		
FED. ROAD DIST. NO.		ILLINOIS	FED. AID PROJECT	
62302		*1818, ETC., 2324.6-1PIR-9		

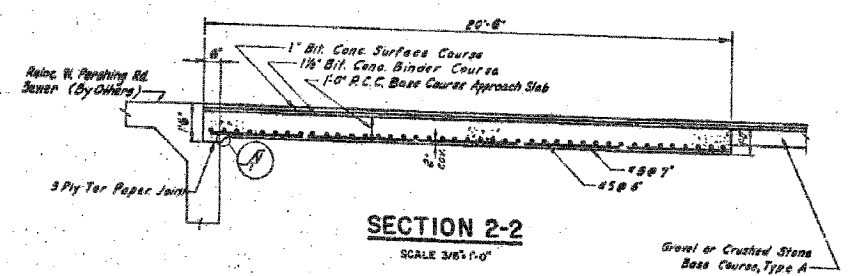
ROUTE NO.	SECTION	COUNTY	TOTAL SHEETS	SHEET NO.
F.A.I. 94	52226-2P	COOK	112	77
FED. ROAD DIST. NO. 4 (ILLINOIS) PROJECT 1-94-2324-94				



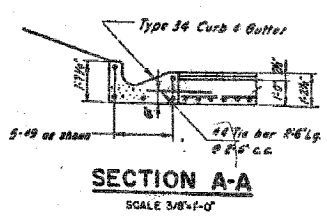
APPROACH SLAB PLAN
SCALE 1"=10'



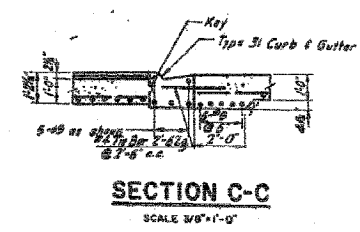
SECTION 1-1
SCALE 3/8"=1'-0"



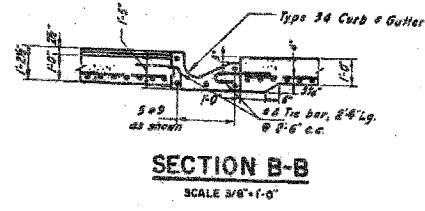
SECTION 2-2
SCALE 3/8"=1'-0"



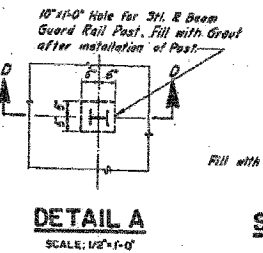
SECTION A-A
SCALE 3/8"=1'-0"



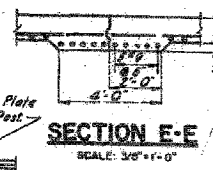
SECTION C-C
SCALE 3/8"=1'-0"



SECTION B-B
SCALE 3/8"=1'-0"



DETAIL A
SCALE 1/2"=1'-0"



SECTION D-D
SCALE 1/2"=1'-0"



SECTION E-E
SCALE 3/8"=1'-0"

- NOTES**
1. Reinforcement bar cover = 2" except as noted.
 2. For Details of Type 31 & Type 34 Curb & Gutter, see Sheet 6-77.
 3. For Details of Construction Joint, see Sheet 6-81.
 4. For Details of Handhole A & B, and Light Standard Foundation, see Sheet 6-8.

CITY OF CHICAGO
DEPARTMENT OF PUBLIC WORKS
BUREAU OF ENGINEERING
SOUTH ROUTE SUPERHIGHWAY
SECTION 5-2226-2P
GRADING, PAVING & DRAINAGE, W. PERSHING RD. TO W. 35TH ST.
APPROACH SLAB
GOODKIND & O'DEA, INC.
CONSULTING ENGINEERS, CHICAGO, ILL.
SCALE AS NOTED
SEPTEMBER 1961
SHEET NO. 6-77 OF 112 SHEETS

Drawn by: [Signature]
Checked by: [Signature]
Approved by: [Signature]

BOWMAN, BARRETT & ASSOCIATES INC.
CONSULTING ENGINEERS
Chicago, Illinois
312.228.0100
www.bbainc.com

FOR INFORMATION ONLY

REVISIONS	
NAME	DATE

SHEET CUL-14 OF CUL-14
ILLINOIS DEPARTMENT OF TRANSPORTATION
F.A.I. 94/90 (DAN RYAN EXPRESSWAY)
31ST STREET TO 71ST STREET
SB EXPRESS LANE RECONSTRUCTION
MWRD CULVERT, N. OF 39TH ST.,
COOK COUNTY, S.N. 016-2625
EXISTING APPROACH SLAB DETAILS
SCALE: NTS
DATE: 07/07/05
DRAWN BY: BDC
CHECKED BY: BLU

ANSI Z39-18-1997 (Permanently Aligned) 12/29/05 6/24/2005