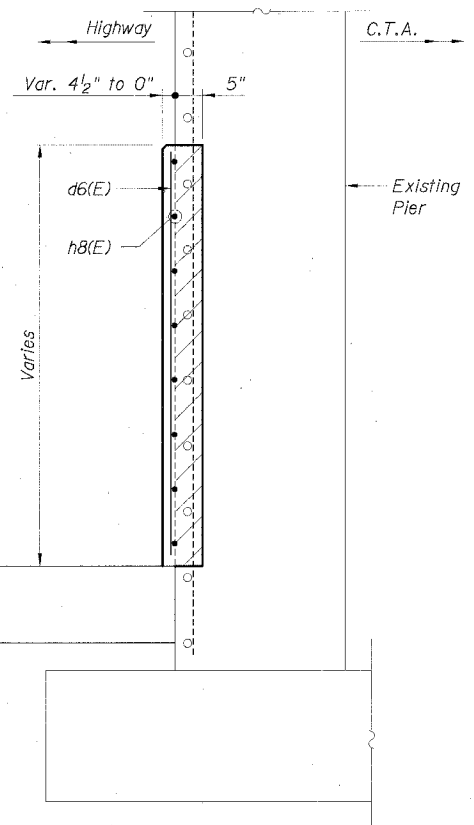
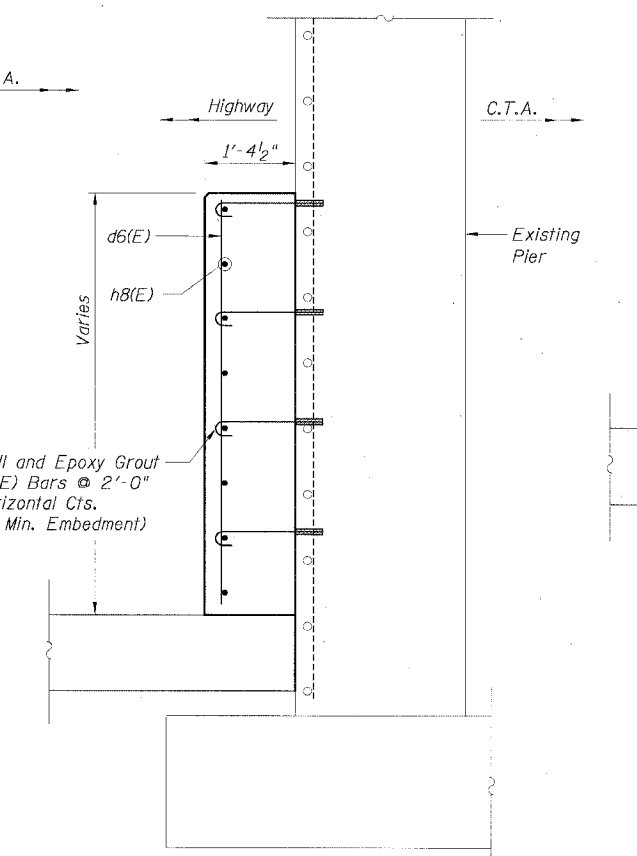
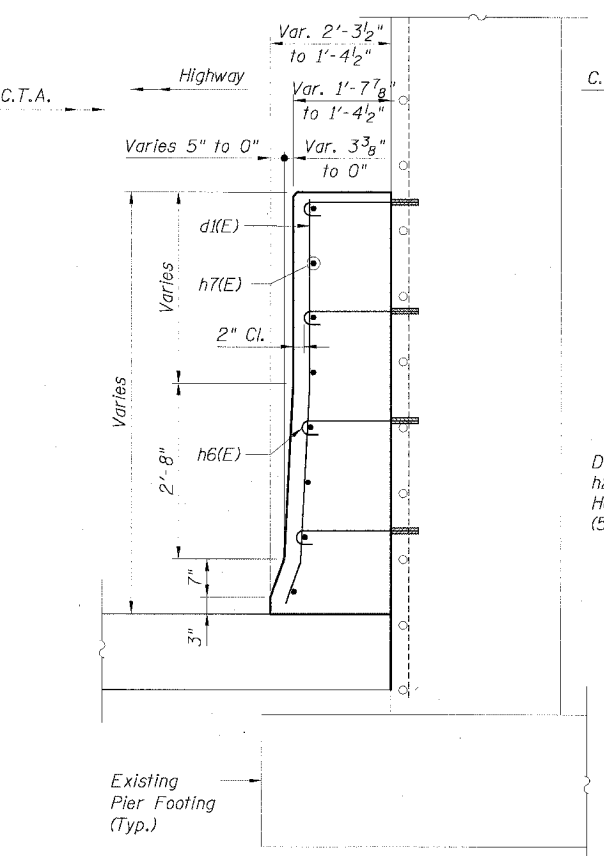
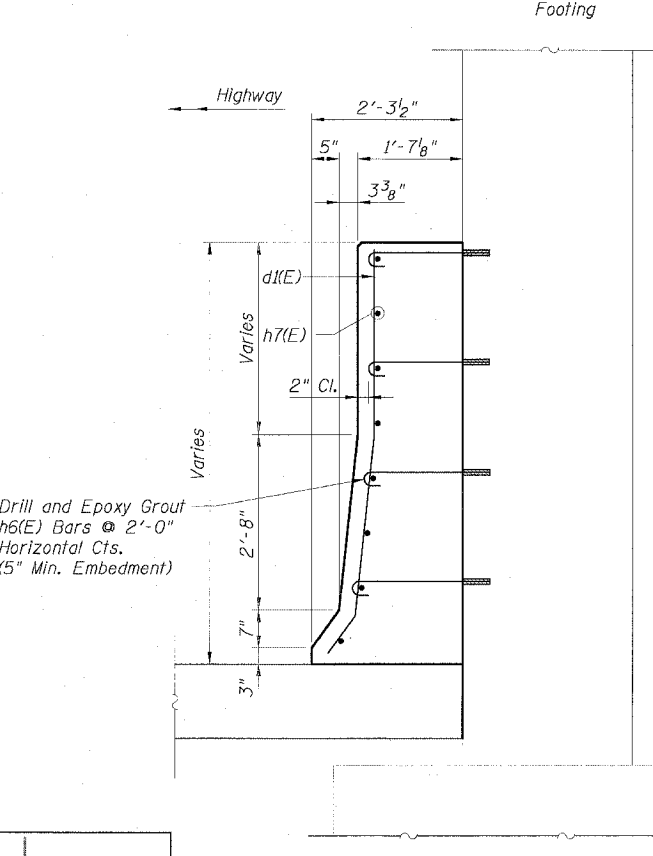
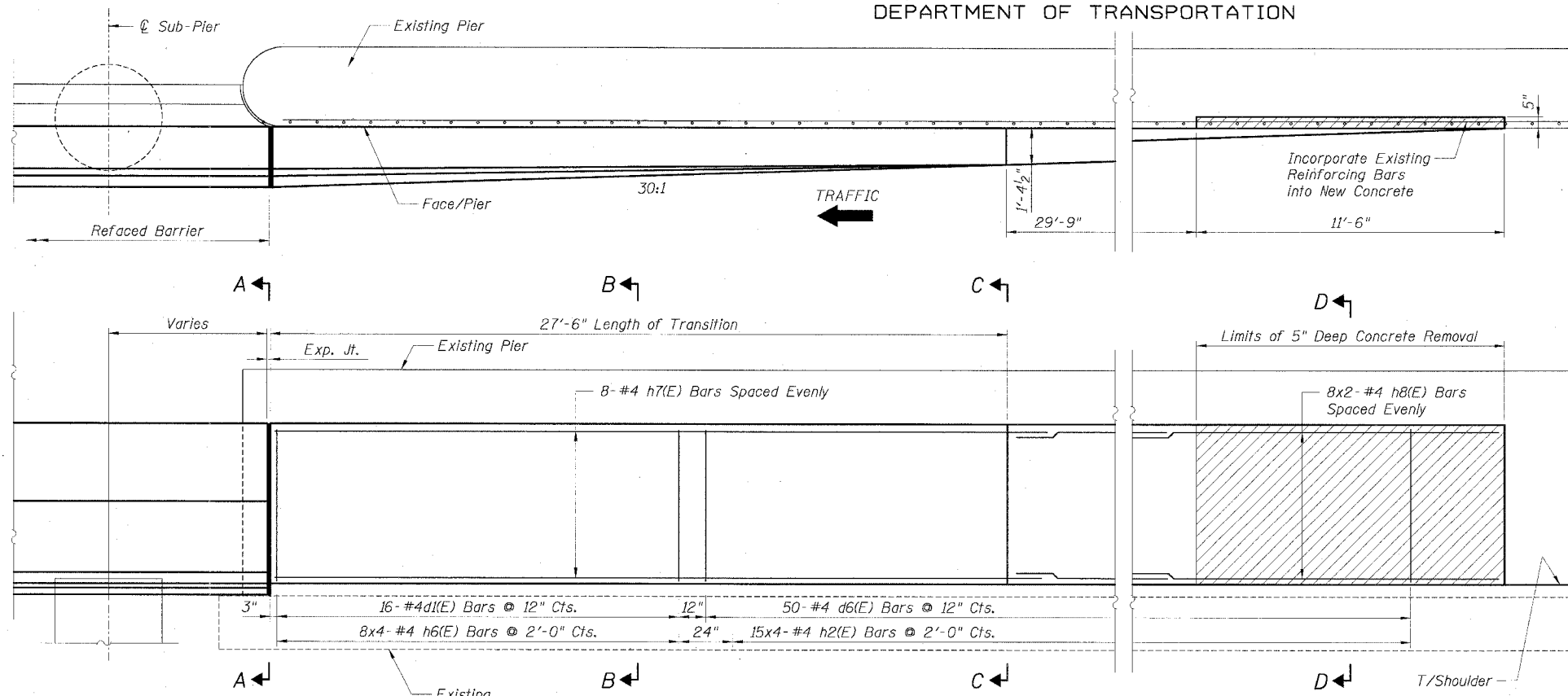


STATE OF ILLINOIS  
DEPARTMENT OF TRANSPORTATION

F.A.I. RTE.:	SECTION	COUNTY	TOTAL SHEETS	SHEET NO.
90/94		COOK	598	416
STA.	TO STA.			
FED. ROAD DIST. NO. 1	ILLINOIS	FED. AID PROJECT		
• (1818, ETC, 2324.6-1)PR-9				62302

**BILL OF MATERIAL**

Bar	No.	Size	Length	Shape
d1(E)	17	#4	5'-4"	—
d6(E)	50	#4	6'-0"	—
h2(E)	60	#4	2'-4"	—
h6(E)	32	#4	2'-6"	—
h7(E)	8	#4	28'-10"	—
h8(E)	16	#4	21'-2"	—
Item		Unit	Quantity	
Reinforcement Bars, Epoxy Coated		Lbs.	790	
Concrete Structures		Cu. Yd.	18.6	
Protective Coat		Sq. Yd.	56	
Concrete Removal		Cu. Yd.	1.1	



**LEGEND:**  
Existing Pier  
Concrete Removal

- NOTES:**
1. Drilling and grouting of h2(E) and h6(E) bars shall be in accordance with Section 584 of the Standard Specifications.
  2. The cost of drilling holes, furnishing and placing Epoxy Grout and setting h2(E) and h6(E) bars shall be included in the cost per cubic yard for Concrete Structures.
  3. Provide joints in facing to match those in the existing barrier.
  4. For Refaced Barrier details see Sheets B2 and B3.
  5. For locations of Transition, see Roadway Plans.

SECTION D-D

Sheet B8 of 18

REVISIONS	NAME	DATE

ILLINOIS DEPARTMENT OF TRANSPORTATION  
F.A.I. 90/94 (DAN RYAN EXPRESSWAY)  
**EXISTING BARRIER WALL MODIFICATIONS AT CTA STATIONS**  
**PROPOSED T/S SHOULDER BELOW EXISTING REFACED BARRIER TO PIER TRANSITION DETAILS (TAPER)**  
SCALE: None DRAWN BY: CHD  
DATE: JULY 7, 2005 CHECKED BY: RDP

CTE AECOM  
303 East Wacker Drive, Suite 600, Chicago, Illinois 60601-2076  
1 312.518.0200 2 312.518.3079 www.cte.aecom.com

SECTION A-A

SECTION B-B

SECTION C-C

p:\p40456\Struct\CK-Lwgs\Draws\Draws\2005\03\CTA-Barrier\VT050602A-C7.dwg