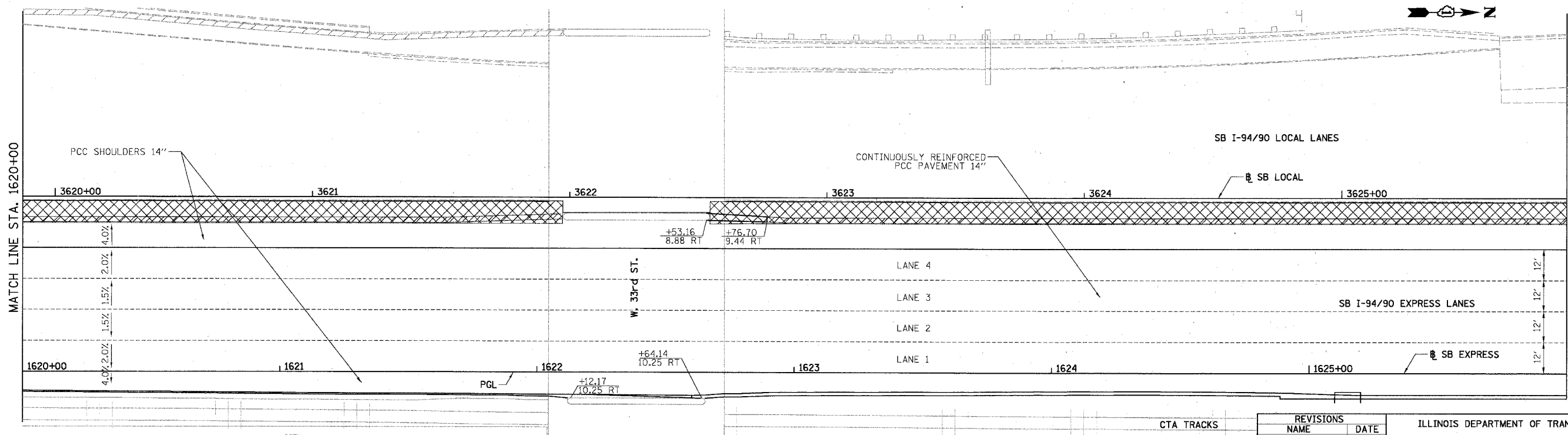
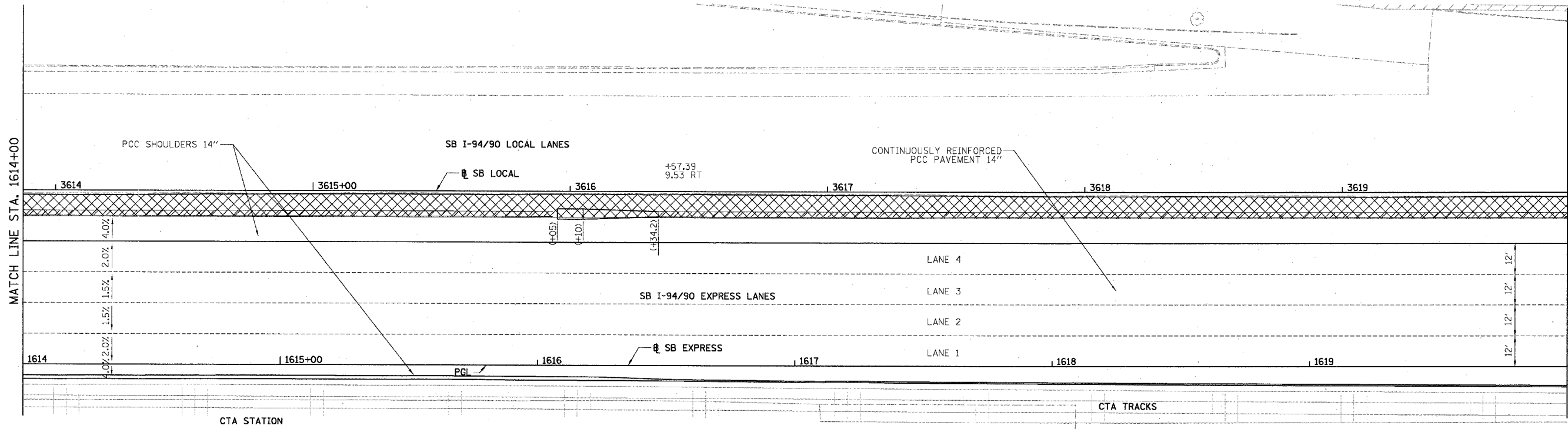


F.A.I.	SECTION	COUNTY	TOTAL SHEETS	SHEET NO.
94/90 *		COOK	598	284
STA. 1614+00	TO STA. 1626+00			
FED. ROAD DIST. NO.	ILLINOIS	FED. AID PROJECT		
62302	*(1818, ETC, 2324.6-1)R-9			

NOTE:
 1. PAVEMENT ELEVATIONS ALONG GORES, RAMPS, AND IN AREAS OF SUPERELEVATION TRANSITION ARE PROVIDED AT 25' INTERVALS, FOR ALL OTHER ELEVATIONS, REFER TO PROFILE AND TYPICAL SECTIONS.



LEGEND
 [***] ELEVATION STATIONED OFF OF SB I-94/90 EXPRESS LANES
 [***] ELEVATION STATIONED OFF OF SB I-94/90 LOCAL LANES
 [***] ELEVATION STATIONED OFF OF SLIP RAMP ALIGNMENT
 [X/X] TEMPORARY PAVEMENT (INTERSTATE) / SHOULDERS

BOWMAN, BARRETT & ASSOCIATES INC.
 CONSULTING ENGINEERS
 Chicago, Illinois
 312.228.0100
 www.bbainc.com

REVISIONS	NAME	DATE

ILLINOIS DEPARTMENT OF TRANSPORTATION
 F.A.I. 94/90 (DAN RYAN EXPRESSWAY)
 31ST STREET TO 71ST STREET
 SB EXPRESS LANE RECONSTRUCTION
 PAVEMENT JOINTING AND ELEVATION PLAN
 SOUTHBOUND STA. 1614+00 TO STA. 1626+00
 SCALE: 1"=20'
 DATE: 07/07/05
 DRAWN BY: TER
 CHECKED BY: JDC

JT-22
 6/28/2005 6:33:57 PM