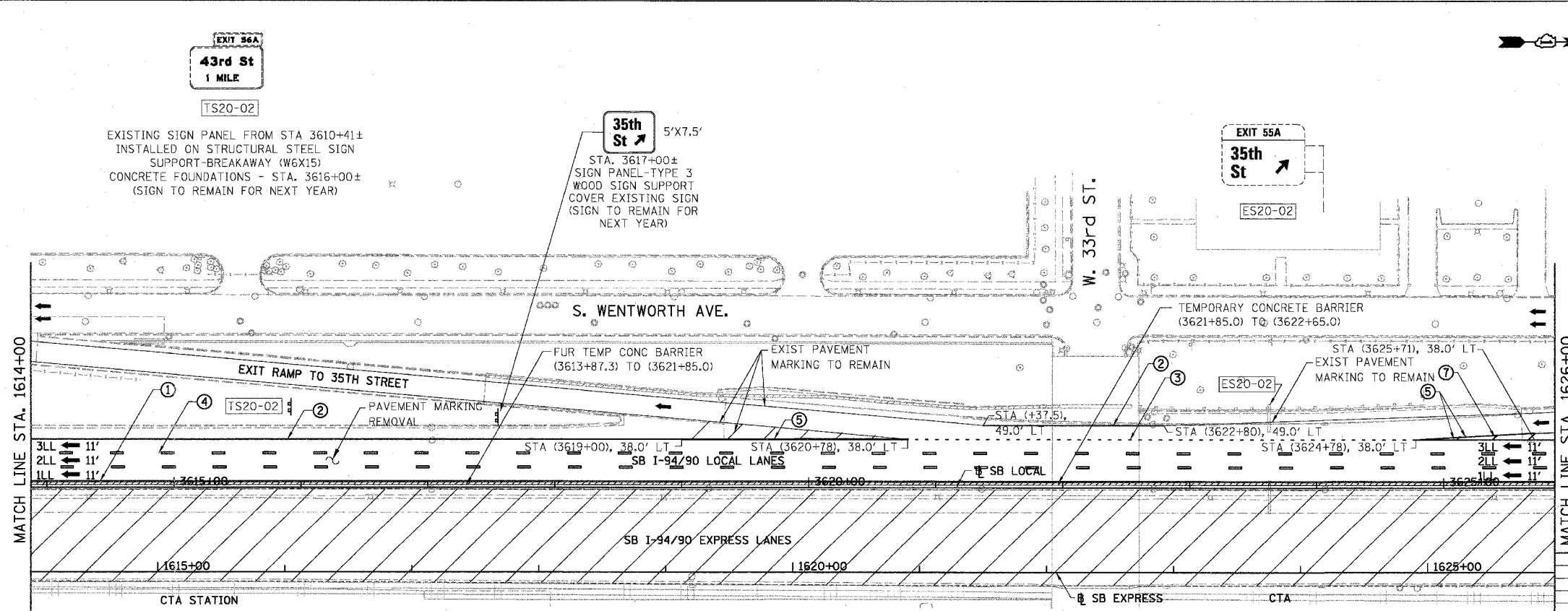
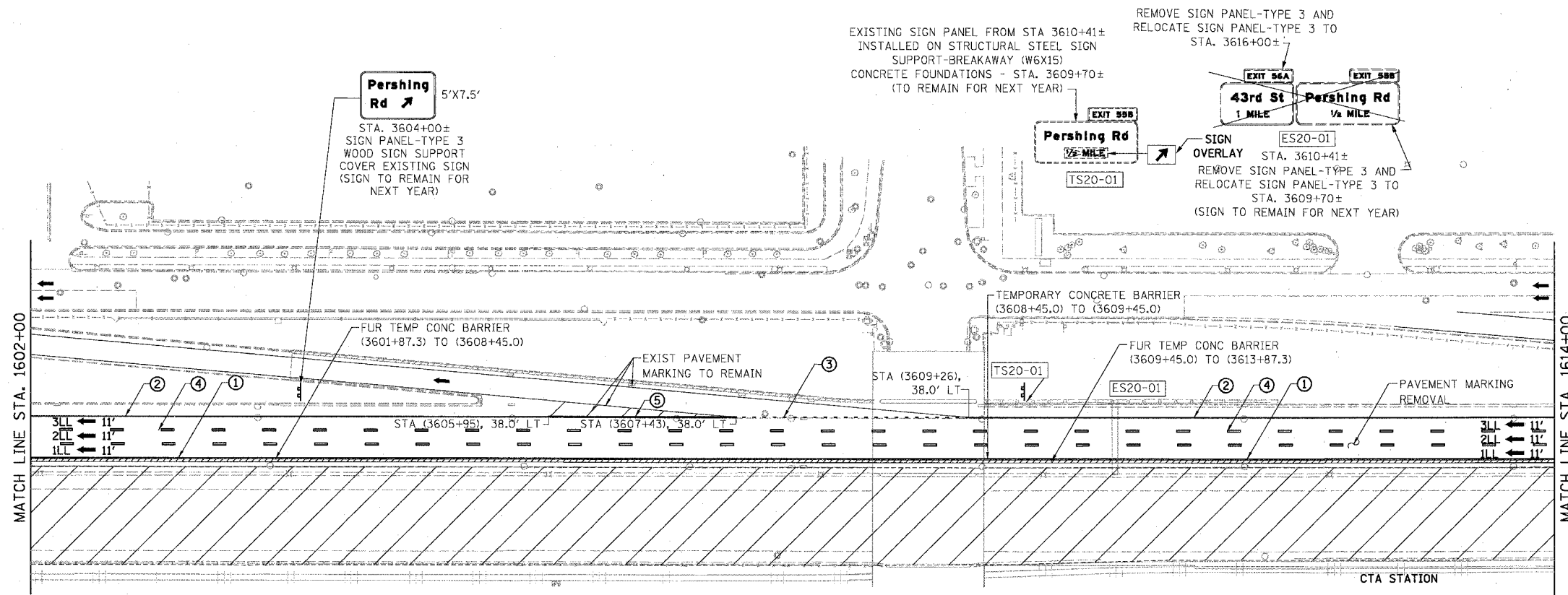


F.A.I.	SECTION	COUNTY	TOTAL SHEETS	SHEET NO.
94/90	*	COOK	598	104
STA. 1602+00		TO STA. 1626+00		
FED. ROAD DIST. NO.		ILLINOIS	FED. AID PROJECT	
62302		*(1818, ETC, 2324.6-1)IR-9		



LEGEND

- WORK ZONE
- TEMPORARY PAVEMENT
- 1LL TRAFFIC LANE & DIRECTION OF TRAFFIC
- DRUM OR BARRICADE TYPE II WITH STEADY BURN LIGHT
- IMPACT ATTENUATORS, TEMPORARY (NON-REDIRECTIVE), TEST LEVEL 3
- BARRICADE TYPE III
- TEMPORARY CONCRETE BARRIER
- ① LINE 4" (YELLOW EDGE LINE)
- ② LINE 4" (WHITE EDGE LINE)
- ③ LINE 4" (SKIP DASH, 6' SKIP - 2' DASH, WHITE)
- ④ LINE 5" (SKIP DASH, 30' SKIP - 10' DASH, WHITE)
- ⑤ LINE 8" (WHITE GORE LINE)
- ⑥ LINE 8" (SKIP DASH, 12' SKIP - 3' DASH, WHITE)
- ⑦ LINE 12" (DIAGONAL, 30' C-C)
- ⑧ LINE 12" (DIAGONAL, 500' C-C)
- ⑨ LETTERS AND SYMBOLS
- ESx-xx EXISTING SIGNS
- TSx-xx TEMPORARY SIGNS

STATIONING

- +##.## STATION PROVIDED FROM THE I-90/94 EXPRESS LANES
- (+##.##) STATION PROVIDED FROM THE I-90/94 LOCAL LANES
- [+##.##] STATION PROVIDED FROM THE SLIP RAMP

NOTE:

ALL PAVEMENT MARKINGS ON THIS SHEET WILL BE PAVEMENT MARKING TAPE, TYPE III, UNLESS OTHERWISE NOTED.

MOT-19

REVISIONS	NAME	DATE

ILLINOIS DEPARTMENT OF TRANSPORTATION
F.A.I. 94/90 (DAN RYAN EXPRESSWAY)
31ST STREET TO 71ST STREET
SB EXPRESS LANE RECONSTRUCTION
MAINTENANCE OF TRAFFIC PLAN STAGE 1
SOUTHBOUND STA. 1602+00 TO STA. 1626+00
SCALE: 1"=50'
DATE: 07/07/05
DRAWN BY: RA
CHECKED BY: RS

BOWMAN, BARRETT & ASSOCIATES INC
CONSULTING ENGINEERS
Chicago, Illinois
312.228.0100
www.bbainc.com

