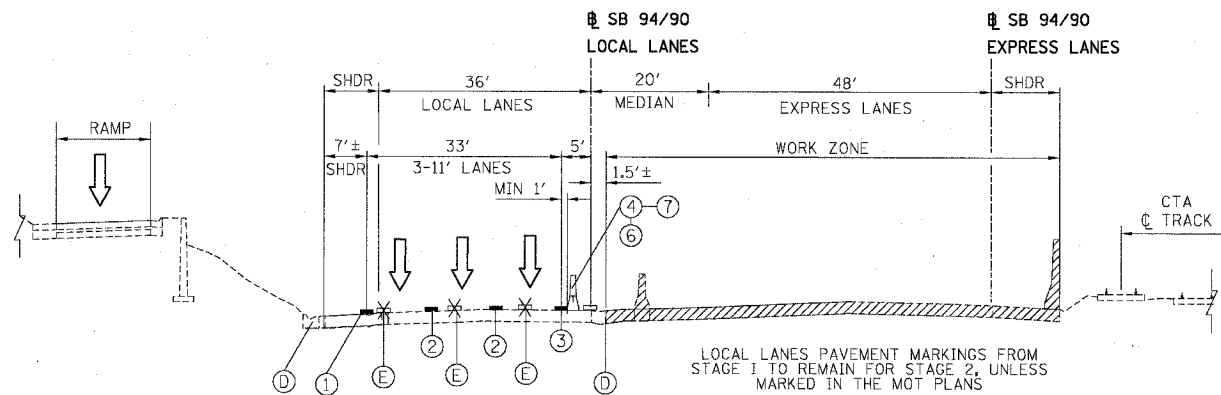
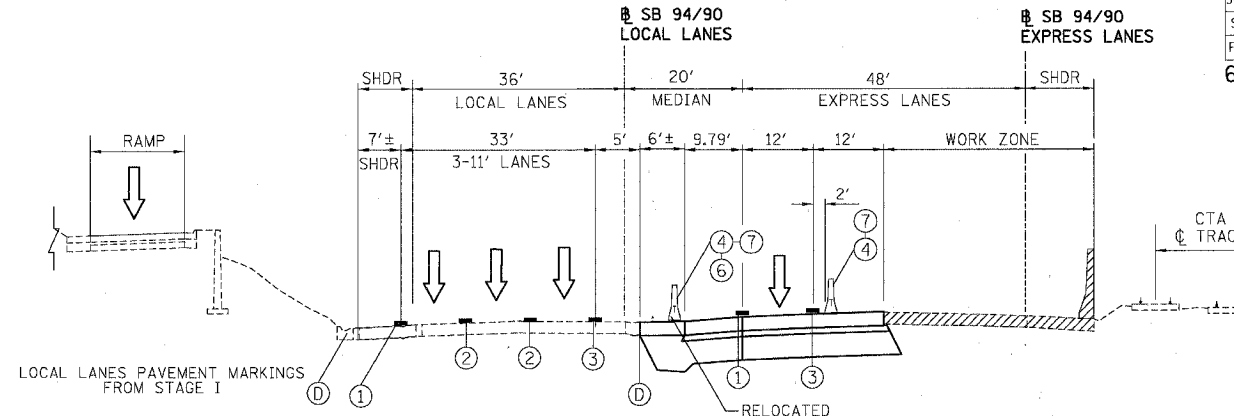


F.A.I.	SECTION	COUNTY	TOTAL SHEETS	SHEET NO.
94/90		COOK	598	88
STA.	TO STA.			
FED. ROAD DIST. NO.	ILLINOIS	FED. AID PROJECT		
62302	*1818, ETC, 2324.6-1PIR-9			



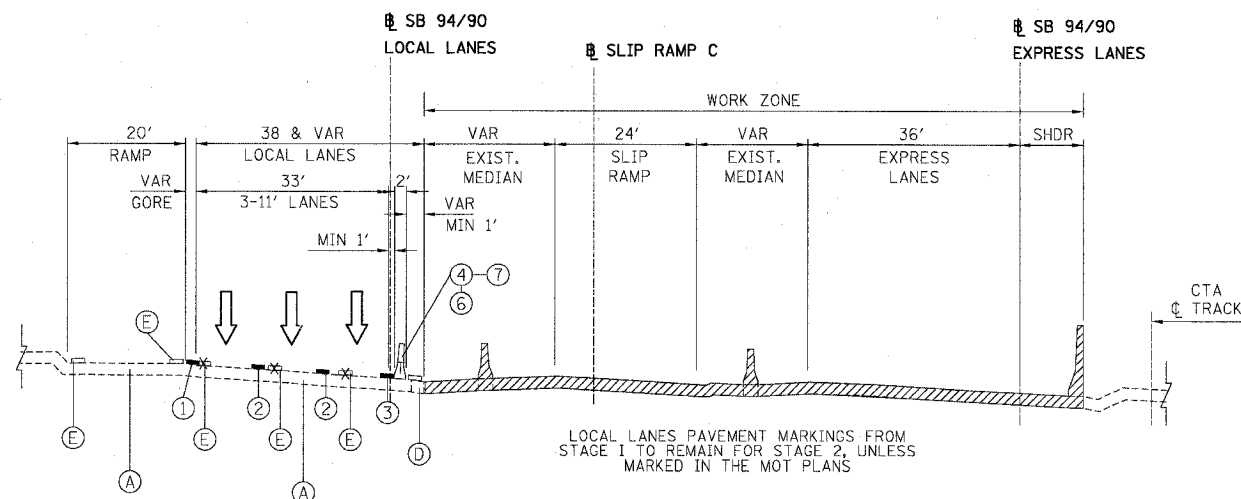
SECTION - 43RD STREET TO 31ST STREET - STAGE 1

STAGE 1 - STA 1555+00 - 1543+00



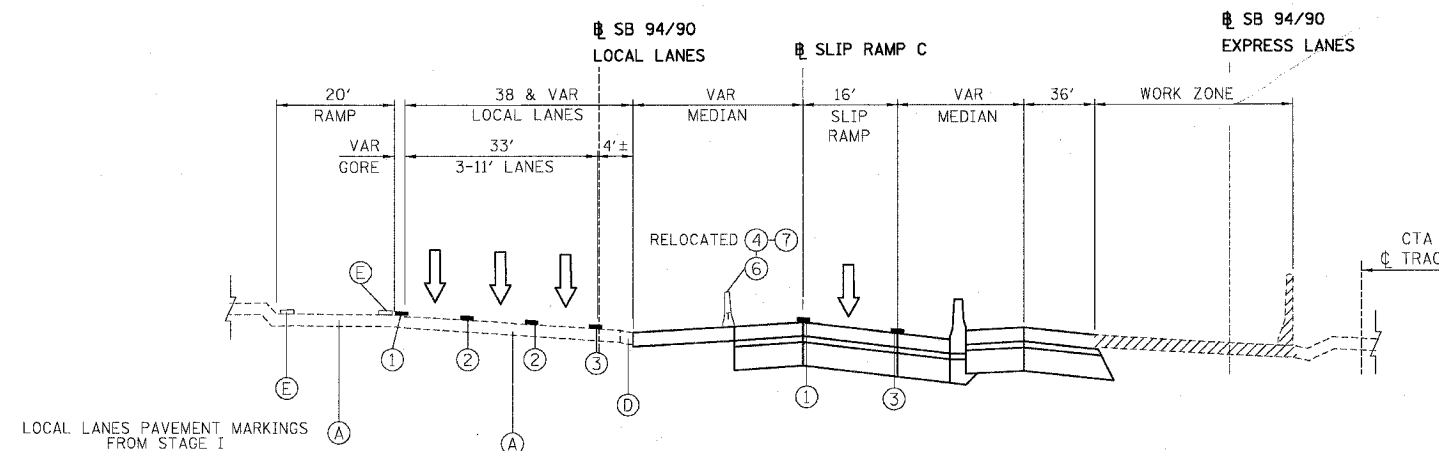
SECTION - 43RD STREET TO 31ST STREET - STAGE 2

STAGE 1 - STA 1555+00 - 1543+00



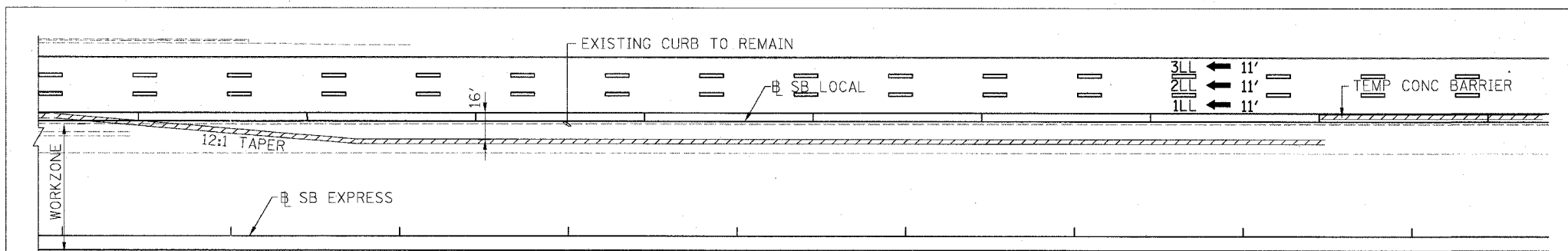
SECTION - 47TH STREET TO 43RD STREET - STAGE 1

STAGE 1 - STA 1530+00 - 1555+00



SECTION - 47TH STREET TO 43RD STREET - STAGE 2

STAGE 1 - STA 1530+00 - 1555+00



NOTES

1. ABOVE DETAIL SHOWN MINIMUM REQUIREMENTS FOR CONTRACTOR'S ACCESS TO WORK ZONE.
2. NUMBER AND LOCATION OF ACCESS POINTS TO BE DETERMINED BY CONTRACTOR.
3. CONTRACTOR'S ACCESS TO WORK ZONE WILL NOT BE PAID SEPARATELY, COST MUST BE INCLUDED IN COST OF 'FURNISH TEMPORARY CONCRETE BARRIER' AND 'TEMPORARY CONCRETE BARRIER'.

PROPOSED LEGEND

- ① PAVEMENT MARKING - LINE 4" (WHITE)
- ② PAVEMENT MARKING - LINE 5" (WHITE, SKIP DASH)
- ③ PAVEMENT MARKING - LINE 4" (YELLOW)
- ④ TEMPORARY CONCRETE BARRIER
- ⑤ TEMPORARY PAVEMENT
- ⑥ TEMPORARY PAVEMENT MARKING - LINE 6"
- ⑦ MONODIRECTIONAL PRISMATIC BARRIER REFLECTOR
- ⑧ VERTICAL PANEL WITH STEADY BURN LIGHT

EXISTING LEGEND

- Ⓐ PAVEMENT
- Ⓑ SHOULDER
- Ⓒ BARRIER WALL
- Ⓓ CURB & GUTTER
- Ⓔ PAVEMENT MARKING

REVISIONS	
NAME	DATE

ILLINOIS DEPARTMENT OF TRANSPORTATION
 F.A.I. 94/90 (DAN RYAN EXPRESSWAY)
 31ST STREET TO 71ST STREET
 SB EXPRESS LANE RECONSTRUCTION
 MAINTENANCE OF TRAFFIC PLAN
 TYPICAL SECTION

SCALE: =NTS
 DATE: 07/07/05
 DRAWN BY: RA
 CHECKED BY: RS

BOWMAN, BARRETT & ASSOCIATES INC.
 CONSULTING ENGINEERS
 Chicago, Illinois
 312.228.0100
 www.bbandainc.com

6/24/2005 3:24:29 PM