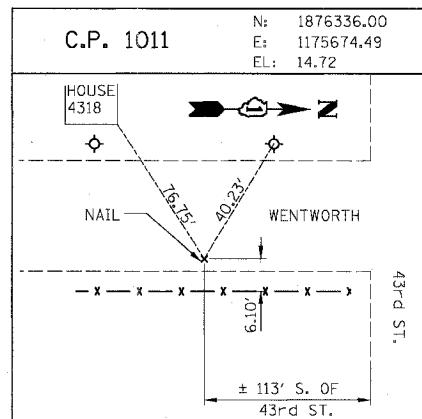


F.A.I.	SECTION	COUNTY	TOTAL SHEETS	SHEET NO.
94/90	*	COOK	598	47
STA. 3553+00.00		TO STA. 3585+00.00		
ILLINOIS FED. AID PROJECT				
62302 • 0818, ETC, 2324.6-1PIR-9				

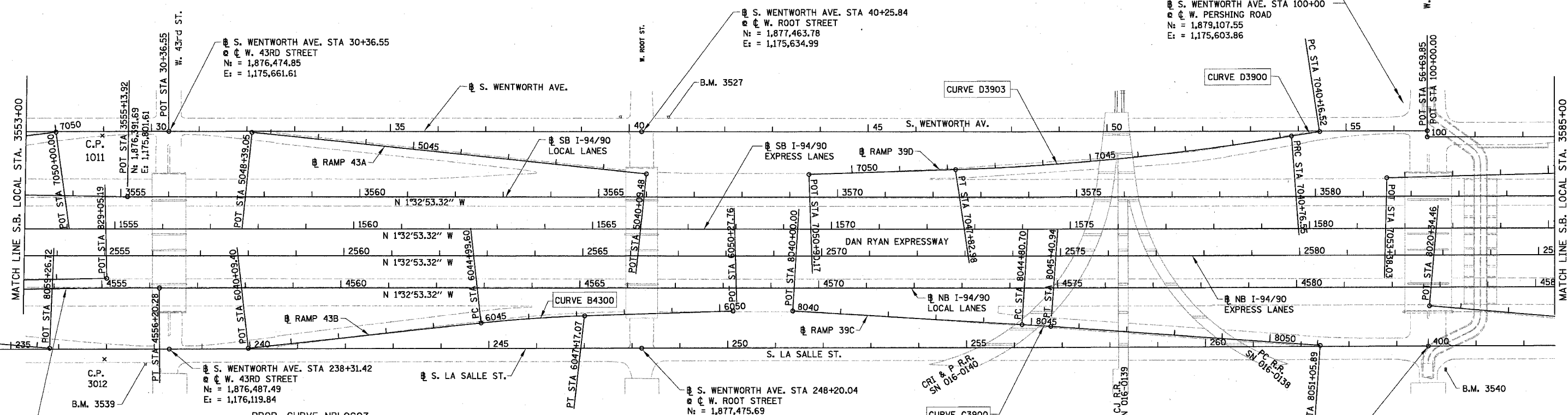


PROP. CURVE D3903
 P.I. STA = 7044+30.25
 N: = 1,878,475.96
 E: = 1,175,675.24
 Δ = 7° 22' 41" (RT)
 D = 1° 02' 40"
 R = 5,486.00'
 T = 353.70'
 L = 706.43'
 E = 11.39'
 P.C. STA = 7040+76.55
 N: = 1,878,823.36
 E: = 1,175,608.75
 P.T. STA = 7047+82.98
 N: = 1,878,122.90
 E: = 1,175,696.57

PROP. CURVE D3900
 P.I. STA = 7040+46.54
 N: = 1,878,852.84
 E: = 1,175,603.11
 Δ = 0° 47' 26" (LT)
 D = 1° 19' 02"
 R = 4,350.00'
 T = 30.02'
 L = 60.03'
 E = 0.10'
 P.C. STA = 7040+16.52
 N: = 1,878,882.40
 E: = 1,175,597.87
 P.T. STA = 7040+76.55
 N: = 1,878,823.36
 E: = 1,175,608.75

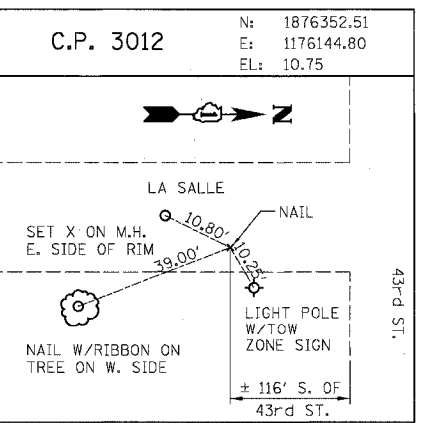
• S. WENTWORTH AVE. STA 56+69.85
 • W. PERSHING ROAD
 N: = 1,879,107.55
 E: = 1,175,590.76

• S. WENTWORTH AVE. STA 100+00
 • W. PERSHING ROAD
 N: = 1,879,107.55
 E: = 1,175,603.86



PROP. CURVE NBLOC08
 P.I. STA = 4554+19.42
 N: = 1,876,262.66
 E: = 1,175,997.17
 Δ = 1° 32' 04" (RT)
 D = 0° 22' 55"
 R = 15,000.00'
 T = 200.89'
 L = 401.75'
 E = 1.35'
 P.C. STA = 4552+18.53
 N: = 1,876,062.07
 E: = 1,176,007.97
 P.T. STA = 4556+20.28
 N: = 1,876,463.47
 E: = 1,175,991.74

PROP. CURVE NBLOC07
 P.I. STA = 4539+56.47
 N: = 1,874,785.65
 E: = 1,176,076.72
 Δ = 28° 53' 07" (LT)
 D = 3° 52' 17"
 R = 1,480.00'
 T = 381.17'
 L = 746.13'
 E = 48.30'
 e = 5.9%
 S.A. = CONT. ROTATING PLANE
 ENDS AT STA 4536+66.66
 T.R. = 68.49' (REMOVAL TRANSITION ONLY)
 S.E. RUN = 393.00' (REMOVAL TRANSITION ONLY)
 S.R. = STA 4541+90.43 TO
 STA 4546+51.92
 P.C. STA = 4535+75.30
 N: = 1,874,442.48
 E: = 1,175,910.80
 P.T. STA = 4543+21.43
 N: = 1,875,166.27
 E: = 1,176,056.22



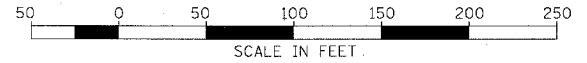
PROP. CURVE B4300
 P.I. STA = 6046+08.39
 N: = 1,877,246.14
 E: = 1,176,032.59
 Δ = 4° 21' 02" (RT)
 D = 2° 00' 02"
 R = 2,864.00'
 T = 108.79'
 L = 217.47'
 E = 2.07'
 e = 3.0%
 S.A. = STA 6044+79.60 TO 6045+09.60
 S.R. = STA 6047+07.07 TO 6047+37.07
 P.C. STA = 6044+99.60
 N: = 1,877,138.36
 E: = 1,176,047.37
 P.T. STA = 6047+17.07
 N: = 1,877,354.72
 E: = 1,176,026.03

PROP. CURVE C3900
 P.I. STA = 8045+10.82
 N: = 1,878,300.35
 E: = 1,176,021.08
 Δ = 0° 41' 25" (RT)
 D = 1° 08' 45"
 R = 5,000.00'
 T = 30.12'
 L = 60.24'
 E = 0.09'
 P.C. STA = 8044+80.70
 N: = 1,878,270.25
 E: = 1,176,020.07
 P.T. STA = 8045+40.94
 N: = 1,878,330.44
 E: = 1,176,022.46

• S. LASALLE ST. STA 400+00.00 AH
 STA 264+66.03 BK
 • W. PERSHING ROAD
 N: = 1,879,121.00
 E: = 1,176,043.89

BOWMAN, BARRETT & ASSOCIATES INC.
 CONSULTING ENGINEERS
 Chicago, Illinois
 312.228.0100
 www.bbarandinc.com

NOTE: ALL COORDINATES ARE GIVEN IN STATE PLANE (GRID) COORDINATES. GRID TO GROUND CONVERSION FACTOR = 1.000010988654360



REVISIONS	
NAME	DATE

ILLINOIS DEPARTMENT OF TRANSPORTATION
F.A.I. 94/90 (DAN RYAN EXPRESSWAY)
 31ST STREET TO 71ST STREET
 SB EXPRESS LANE RECONSTRUCTION
 ALIGNMENT, TIES, AND BENCHMARKS
 SCALE: 1"=100'
 DATE: 07/07/05
 DRAWN BY: JDC
 CHECKED BY: RS

6/24/2005 3:55PM