

FAU	SECTION	COUNTY	TOTAL SHEETS	SHEET NO.
2760	1316RS-1	COOK	22	1

STATE OF ILLINOIS  
DEPARTMENT OF TRANSPORTATION  
DIVISION OF HIGHWAYS

**PROPOSED  
HIGHWAY PLANS**

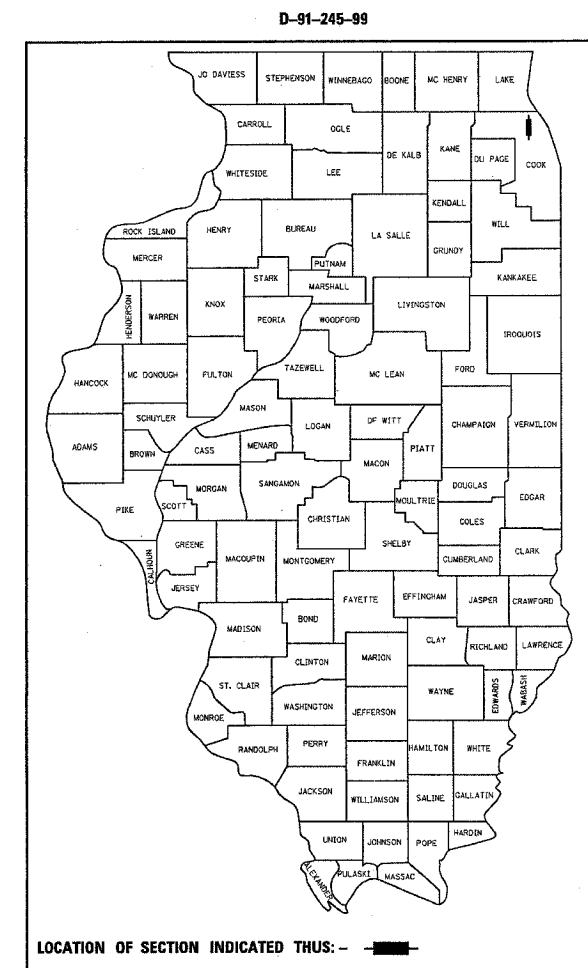
**FAU2760(SHERMER ROAD)  
SECTION 1316RS-1  
WILLOW ROAD TO OLD WILLOW ROAD  
COOK COUNTY  
C-91-245-99**

FOR INDEX OF SHEETS, SEE SHEET NO. 2

THE IMPROVEMENT IS LOCATED IN THE VILLAGE OF GLENVIEW IN COOK COUNTY

AVERAGE DAILY TRAFFIC = 14,600

POSTED SPEED LIMIT = 35 MPH



LOCATION OF SECTION INDICATED THIS: -

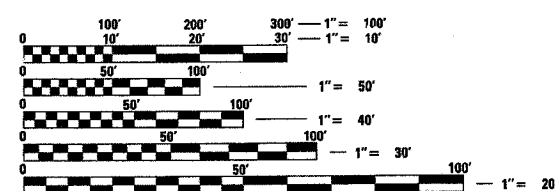
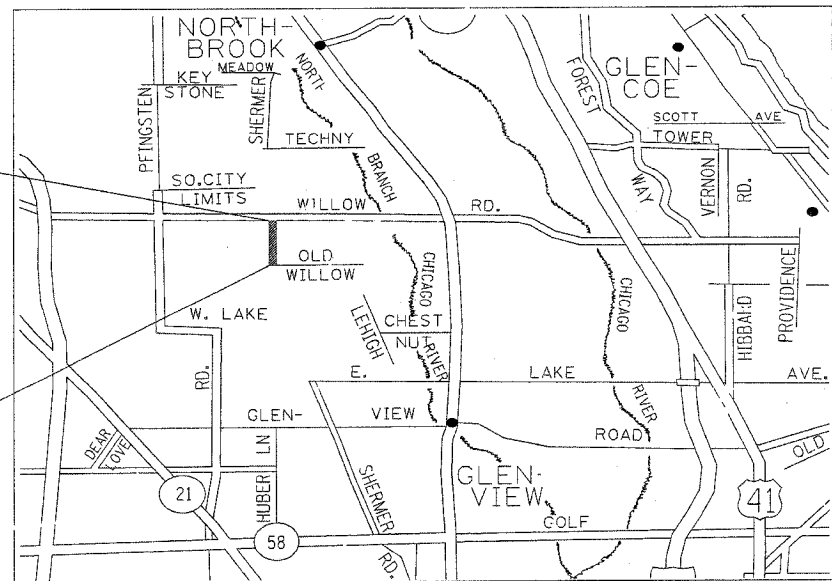
NOTE: WHEREVER IN THESE PLANS OR 42 IS MENTIONED IT SHALL MEAN FAU 2760.

DISTRICT 1 DESIGN PLAN PREPARATION ENGINEER: KEN ENG /R. SHAH (847) 705-4437



IMPROVEMENT ENDS  
STATION 44+17

IMPROVEMENT BEGINS  
STATION 18+13



FULL SIZE PLANS HAVE BEEN PREPARED USING STANDARD ENGINEERING SCALES. REDUCED SIZED PLANS WILL NOT CONFORM TO STANDARD SCALES. IN MAKING MEASUREMENTS ON REDUCED PLANS, THE ABOVE SCALES MAY BE USED.

J.U.L.I.E.  
JOINT UTILITY LOCATION INFORMATION FOR EXCAVATION  
1-800-892-0123

GROSS LENGTH OF IMPROVEMENT = 2,604 LINEAL FEET = 0.500 MILES  
NET LENGTH OF IMPROVEMENT = 2,604 LINEAL FEET = 0.500 MILES

CONTRACT NO. 60754

STATE OF ILLINOIS  
DEPARTMENT OF TRANSPORTATION  
DIVISION OF HIGHWAYS

SUBMITTED March 21, 20 05

Diana O'Keefe  
DEPUTY DIRECTOR OF HIGHWAYS, REGION ENGINEER

May 13, 20 05  
Mike Hine  
ENGINEER OF DESIGN AND ENVIRONMENT

May 13, 20 05  
Victor Mader  
DIRECTOR OF HIGHWAYS, CHIEF ENGINEER

**PRINTED BY THE AUTHORITY  
OF THE STATE OF ILLINOIS**

Rev