

STATE OF ILLINOIS
DEPARTMENT OF TRANSPORTATION

F.A.S.	SECTION	COUNTY	TOTAL SHEETS	SHEET NO.
1824	24-00155-00-SP	PERRY	9	1
		ILLINOIS	CONTRACT NO. 99774	

PROPOSED HIGHWAY PLANS

FAS 1824 (KATHLEEN ROAD)
SECTION 24-00155-00-SP
PROJECT: 7J3I(406)
CULVERT REPLACEMENT
PERRY COUNTY

P-99-003-26



INDEX OF SHEETS

- 1 COVER SHEET
- 2 SUMMARY OF QUANTITIES & GENERAL NOTES
- 3 TYPICAL SECTIONS
- 4 SCHEDULES OF QUANTITIES
- 5 PLAN & PROFILE
- 6-9 CROSS SECTIONS

HIGHWAY STANDARDS

- 000001-09 STANDARD SYMBOLS, ABBREVIATIONS AND PATTERNS
- 001006 DECIMAL OF AN INCH AND OF A FOOT
- 542401-04 METAL FLARED END SECTIONS FOR PIPE CULVERTS
- 701006-05 OFF-ROAD OPERATIONS, 2L, 2W, 15' TO 24" FROM PAVEMENT EDGE
- 701201-05 LANE CLOSURE, 2L 2W, DAY ONLY, FOR SPEEDS ≥ 45 MPH
- 701901-11 TRAFFIC CONTROL DEVICES
- B.L.R.21-9 TYPICAL APPLICATION OF TRAFFIC CONTROL DEVICES FOR CONSTRUCTION ON RURAL LOCAL HIGHWAYS

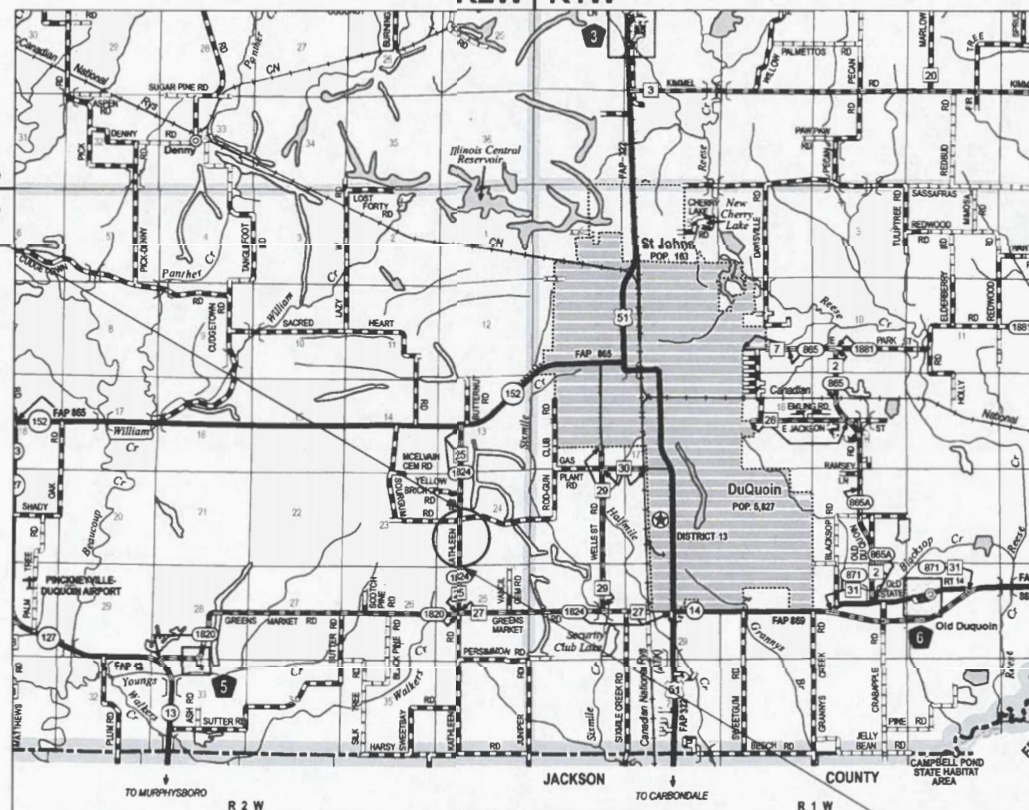
UTILITIES

- POWER: AMEREN ILLINOIS - (SOUTH)
#6 RICHARD MARK WAY
COLLINSVILLE, IL 62234
618-301-5305
- WATER: ELVERADO WATER DISTRICT
475 KATHLEEN ROAD
DU QUOIN, IL 62832
618-318-3077
- PHONE: FRONTIER COMMUNICATIONS
208 W UNION STREET
MARION, IL 62959
815-895-1515

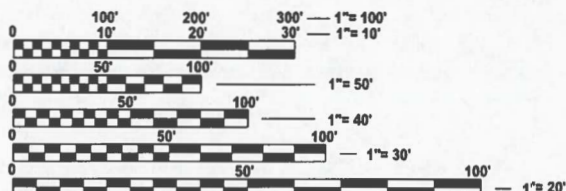
C-99-017-26

R2W | R1W

T5S
T6S
END IMPROVEMENTS
STA. 9+80



LOCATION MAP NOT TO SCALE



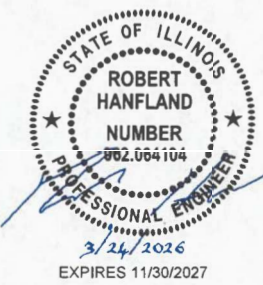
FULL SIZE PLANS HAVE BEEN PREPARED USING STANDARD ENGINEERING SCALES. REDUCED SIZED PLANS WILL NOT CONFORM TO STANDARD SCALES. IN MAKING MEASUREMENTS ON REDUCED PLANS, THE ABOVE SCALES MAY BE USED.

J.U.L.I.E.
JOINT UTILITY LOCATION INFORMATION FOR EXCAVATION
1-800-892-0123
OR 811



GROSS LENGTH = 62.00 FT. = 0.012 MILE

BEGIN IMPROVEMENTS
STA. 9+18



FUNCTIONAL CLASSIFICATION
MAJOR COLLECTOR
2024 ADT = 1000
P.V. = 89.0% S.U. = 6.0% M.U. = 5.0%

STATE OF ILLINOIS
DEPARTMENT OF TRANSPORTATION

APPROVED: May 26 20 26
B.O. [Signature]
PERRY COUNTY ENGINEER

PASSED: 5-28 20 26
[Signature]
DISTRICT 6 ENGINEER OF LOCAL ROADS AND STREETS

RELEASED FOR BID BASED ON LIMITED REVIEW: 5-28 20 26
Carris [Signature]
REGION FIVE ENGINEER

PRINTED BY THE AUTHORITY
OF THE STATE OF ILLINOIS

CODE NO.	ITEM	UNIT	TOTAL QUANTITY	FAS 1824
				FED 100% STATE 0% PERRY COUNTY ROADWAY 001 RURAL
20200100	EARTH EXCAVATION	CU YD	80	80
20400800	FURNISHED EXCAVATION	CU YD	115	115
20800150	TRENCH BACKFILL	CU YD	81	81
28100107	STONE RIPRAP, CLASS A4	SQ YD	69	69
28200200	FILTER FABRIC	SQ YD	69	69
35102400	AGGREGATE BASE COURSE, TYPE B 12"	SQ YD	152	152
40603080	HOT-MIX ASPHALT BINDER COURSE, IL-19.0, N50	TON	18	18
40604050	HOT-MIX ASPHALT SURFACE COURSE, IL-9.5, MIX "C", N50	TON	11	11
40600275	BITUMINOUS MATERIALS (PRIME COAT)	POUND	341	341
40600290	BITUMINOUS MATERIALS (TACK COAT)	POUND	35	35
44000100	PAVEMENT REMOVAL	SQ YD	122	122
50105220	PIPE CULVERT REMOVAL	FOOT	103	103
542C0253	PIPE CULVERTS, CLASS C, TYPE 1 - 48"	FOOT	141	141
54262748	METAL FLARED END SECTIONS 48"	EACH	4	4
* 63200310	GUARDRAIL REMOVAL	FOOT	256	256
67100100	MOBILIZATION	L SUM	1	1
X2501000	SEEDING CLASS 2 (SPECIAL)	ACRE	0.50	0.50
X7011800	TRAFFIC CONTROL AND PROTECTION, STANDARD BLR 21	L SUM	1	1

* SPECIALTY ITEM

GENERAL NOTES

- ALL CONSTRUCTION SHALL BE DONE IN ACCORDANCE WITH THE STATE OF ILLINOIS "STANDARD SPECIFICATIONS FOR ROAD AND BRIDGE CONSTRUCTION" ADOPTED JANUARY 1, 2022. THESE PLANS AND THE SPECIAL PROVISIONS INCLUDED IN THE CONTRACT DOCUMENTS.
- ALL CLEARING AND GRUBBING SHALL BE INCLUDED IN THE COST OF EARTH EXCAVATION.
- THE CONTRACTOR SHALL PROVIDE POSITIVE DRAINAGE AT ALL TIMES WITHIN THE CONSTRUCTION AREAS AND PREVENT DRAINAGE OR PONDING OF WATER ONTO PRIVATE PROPERTY.
- NO PAYMENT FOR OVERHAUL WILL BE MADE FOR THIS SECTION.
- THE LOCATION OF EXISTING UTILITIES AS SHOWN ON THE PLANS ARE BASED ON FIELD INVESTIGATION AND THE BEST INFORMATION AVAILABLE. HOWEVER, THE EXACT LOCATIONS ARE NOT GUARANTEED. IT SHALL BE THE CONTRACTOR'S RESPONSIBILITY TO ASCERTAIN THEIR EXACT LOCATION FROM THE INDIVIDUAL UTILITY COMPANIES AND BY FIELD INSPECTION.
- TREES WITHIN THE ROW WHICH INTERFERE WITH CONSTRUCTION ACTIVITIES SHALL BE REMOVED ONLY AT THE DIRECTION OF THE ENGINEER.
- ELEVATIONS ARE BASED ON NAVD88. THE PROPOSED GRADE ELEVATIONS SHOWN ON THE PLAN AND PROFILE SHEET AND STATION CROSS SECTIONS ARE THE ELEVATIONS FOR THE FINISHED SURFACE AT THE LOCATIONS INDICATED.
- THE FOLLOWING RATES OF APPLICATION HAVE BEEN USED IN CALCULATING PLAN QUANTITIES:
 HOT-MIX ASPHALT SURFACE & BINDER COURSE 112 LBS/SY/INCH
 BITUMINOUS MATERIALS (PRIME COAT) 0.25 LB/SQ FT
 BITUMINOUS MATERIALS (TACK COAT) 0.025 LB/SQ FT

	HMA SURFACE COURSE PG 64-22	HMA BINDER COURSE PG 64-22
THICKNESS	1 1/2"	2 1/2"
DESIGN AIR VOIDS	4% @ 50 GYR	4% @ 50 GYR
MIXTURE COMPOSITION (MIXTURE GRADATION)	IL 9.5 627.8	IL 19.0
FRICTION AGGREGATE	MIXTURE C	NONE
DENSITY TEST METHOD	NUCLEAR	NUCLEAR
MIXTURE WEIGHT	112 LBS/SY/INCH THICKNESS	112 LBS/SY/INCH THICKNESS
QUALITY MANAGEMENT PROGRAM	QC/QA	QC/QA

MODEL: Index Gennote Standard (Sheet)
 FILE NAME: P:\6XXXX\22X-63XX\6357 - Perry County HSIP 2024\CAD\Drawings\6357-shh-Gennote.dgn



USERNAME = dmammoser	DESIGNED -	REVISED -
PLOT SCALE = 53CALES	DRAWN -	REVISED -
PLOT DATE = 8/4/2025	CHECKED -	REVISED -
	DATE -	REVISED -

STATE OF ILLINOIS
DEPARTMENT OF TRANSPORTATION

SUMMARY OF QUANTITIES & GENERAL NOTES

SCALE: SHEET 1 OF 1 SHEETS STA. TO STA.

F.A.S. RTE.	SECTION	COUNTY	TOTAL SHEETS	SHEET NO.
1824	24-00155-00-SP	PERRY	9	2
CONTRACT NO. 99774				
ILLINOIS FED. AID PROJECT				

EARTHWORK SCHEDULE				
LOCATION	EARTH EXCAVATION	ADJ EARTH EXCAVATION 25% SHRINKAGE	EMBANKMENT	EARTHWORK BALANCE
	CU YD	CU YD	CU YD	CU YD
8+00 TO 10+50	75.88	56.91	173.47	-116.6
TOTAL	76	57	174	-117
USE	80	60	175	-115

GUARDRAIL REMOVAL				
STATION	TO	STATION	SIDE	LENGTH (FT)
8+62.1	TO	9+89.8	RT	127.7
8+93.7	TO	10+21.1	LT	127.3
TOTAL				256

PAVEMENT REMOVAL				
STATION	TO	STATION	SIDE	AREA (SQ YD)
9+18.0	TO	9+80.0	LT/RT	121.9
TOTAL				122

SEEDING SCHEDULE				
STATION	TO	STATION	SIDE	SEEDING CLASS 2 (SPECIAL)
				ACRE
8+00.0	TO	10+50.0	LT	0.14
8+00.0	TO	10+50.0	RT	0.13
TOTAL				0.27
USE				0.50

PIPE CULVERT REMOVAL		
STATION	SIDE	LENGTH (FT)
9+38.5	LT/RT	51.2
9+47.2	LT/RT	51.1
TOTAL		103

METAL FLARED END SECTIONS 48"		
STATION	SIDE	EACH
9+10.4	RT	1.0
9+29.6	RT	1.0
9+54.4	LT	1.0
9+74.4	LT	1.0
TOTAL		4

PIPE CULVERTS CLASS C TYPE 1 48"		
STATION	SIDE	LENGTH (FT)
9+33	LT/RT	69.7
9+53	LT/RT	71.0
TOTAL		140.7
USE		141

STONE RIPRAP CLASS A4				
STATION	TO	STATION	SIDE	SQ YD
9+10.4	TO	9+29.6	RT	12.6
9+54.4	TO	9+90.0	LT	56.0
TOTAL				68.6
USE				69

HMA BINDER COURSE IL-19.0, N50				
STATION	TO	STATION	SIDE	TON
9+18.0	TO	9+80.0	LT/RT	17.1
TOTAL				18

BIT. MATLS (PRIME COAT)				
STATION	TO	STATION	SIDE	POUND
9+18.0	TO	9+80.0	LT/RT	341.0
TOTAL				341

AGG. BASE COURSE, TYPE B, 12"				
STATION	TO	STATION	SIDE	AREA (SQ YD)
9+18.0	TO	9+80.0	LT/RT	151.6
TOTAL				152

HMA SURFACE COURSE IL-9.5, MIX C, N50				
STATION	TO	STATION	SIDE	TON
9+18.0	TO	9+80.0	LT/RT	10.2
TOTAL				11

BIT. MATLS (TACK COAT)				
STATION	TO	STATION	SIDE	POUND
9+18.0	TO	9+80.0	LT/RT	34.1
TOTAL				35

TRENCH BACKFILL		
STATION	SIDE	VOLUME (CU YD)
9+33.0	LT/RT	41.0
9+53.0	LT/RT	39.7
TOTAL		80.7
USE		81

STATE OF ILLINOIS
DEPARTMENT OF TRANSPORTATION

SCHEDULES

F.A.S. RTE.	SECTION	COUNTY	TOTAL SHEETS	SHEET NO.
1824	24-00155-00-SP	PERRY	9	4
CONTRACT NO. 99774				
ILLINOIS FED. AID PROJECT				

SCALE: SHEET 1 OF 1 SHEETS STA. TO STA.

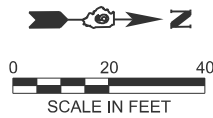
MODEL: Index_Genotele_Standard [Sheet]
FILE NAME: P:\6XXXX\24-00155-00-SP-Perry County HSP 2024\CADD Data\CAD Sheets\6357-eh-Schedules.dgn



USER NAME = dmmamoser
DESIGNED -
DRAWN -
PLOT SCALE = \$SCALE\$
PLOT DATE = 3/23/2026

DESIGNED -
DRAWN -
CHECKED -
DATE -

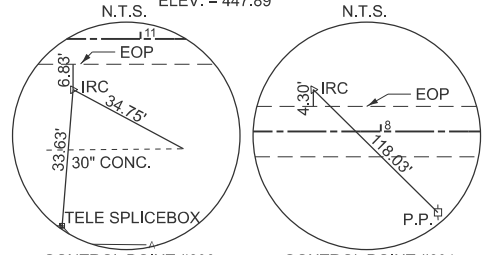
REVISED -
REVISED -
REVISED -
REVISED -



LEGEND

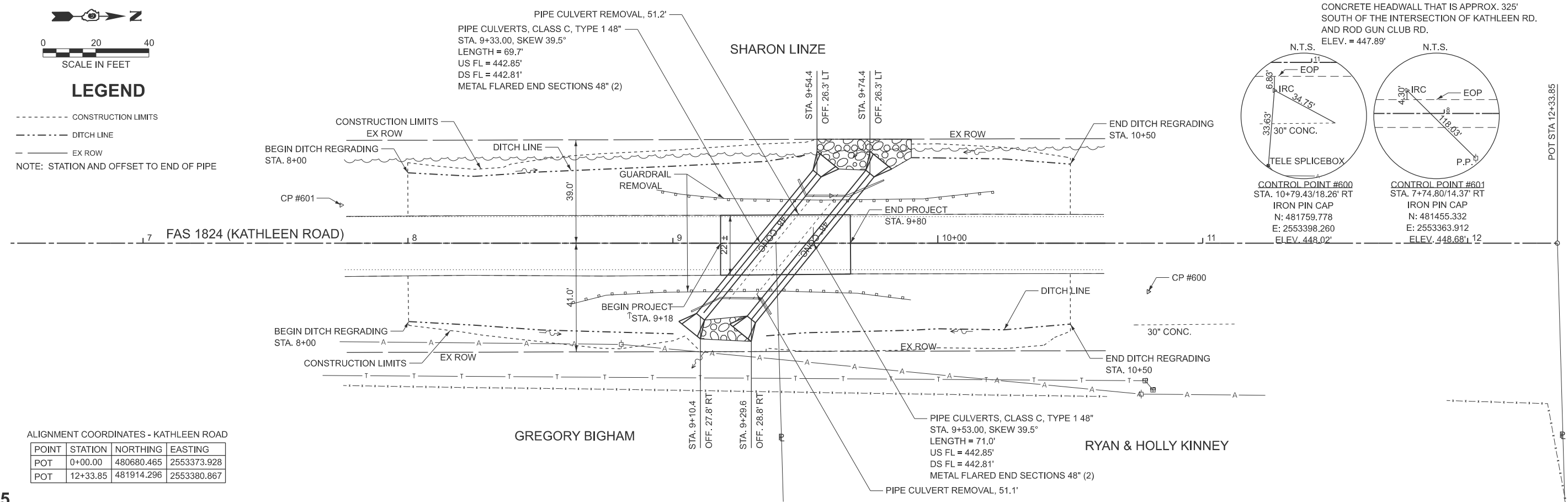
- CONSTRUCTION LIMITS
- - - DITCH LINE
- EX ROW
- NOTE: STATION AND OFFSET TO END OF PIPE

BENCHMARK: CUT SQUARE IN THE TOP CENTER OF THE WEST CONCRETE HEADWALL THAT IS APPROX. 325' SOUTH OF THE INTERSECTION OF KATHLEEN RD. AND ROD GUN CLUB RD. ELEV. = 447.89'



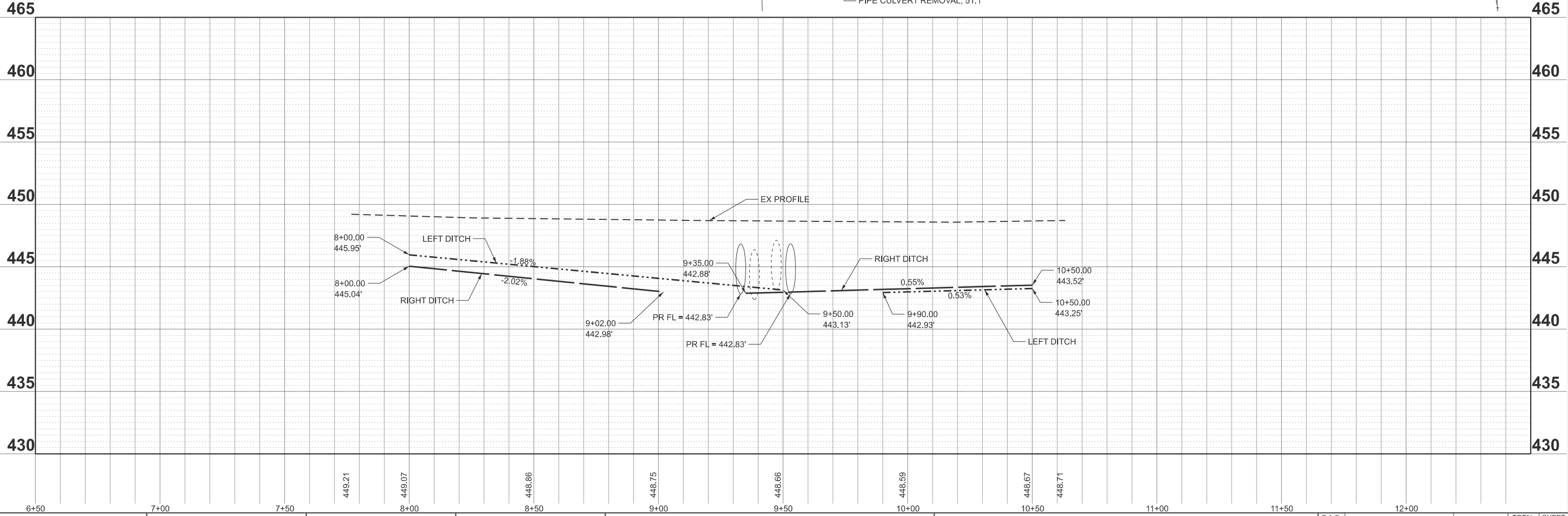
CONTROL POINT #600
 STA. 10+79.43/18.26' RT
 IRON PIN CAP
 N: 481759.778
 E: 2553398.260
 ELEV. 448.02'

CONTROL POINT #601
 STA. 7+74.80/14.37' RT
 IRON PIN CAP
 N: 481455.332
 E: 2553363.912
 ELEV. 448.68' ± 12



ALIGNMENT COORDINATES - KATHLEEN ROAD

POINT	STATION	NORTHING	EASTING
POT	0+00.00	480680.465	2553373.928
POT	12+33.85	481914.296	2553380.867



MODEL: GeomScr - Plan 1-1 (Sheet)
 FILE NAME: P:\6XXXX\22X-53XX\6357 - Perry County HSP 2024\CADD Data\CAD sheets\6357-sht-PlanProf.dgn

USER NAME =	dmmamoser
DESIGNED -	
DRAWN -	
CHECKED -	
PLOT DATE =	3/23/2026

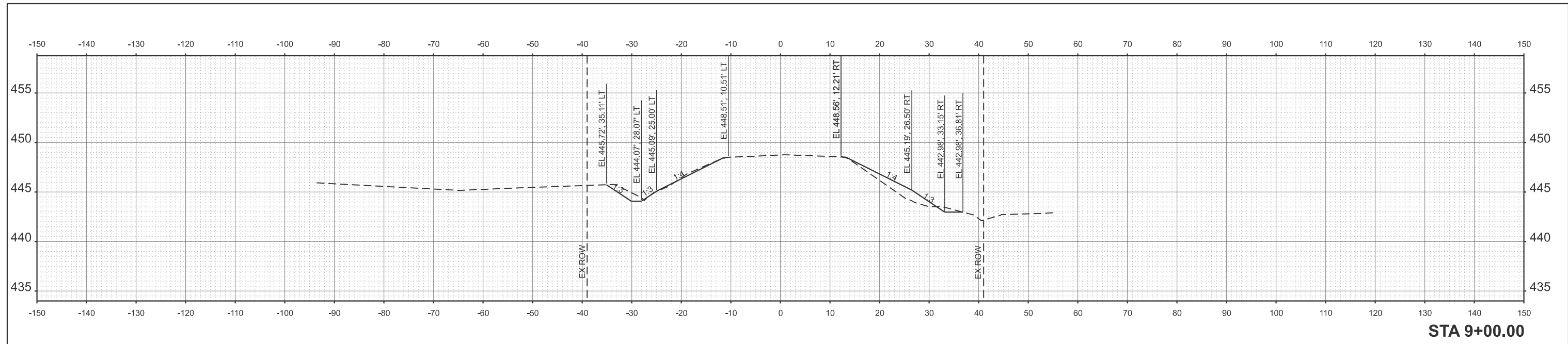
DESIGNED -	REVISED -
DRAWN -	REVISED -
CHECKED -	REVISED -
DATE -	REVISED -

**STATE OF ILLINOIS
 DEPARTMENT OF TRANSPORTATION**

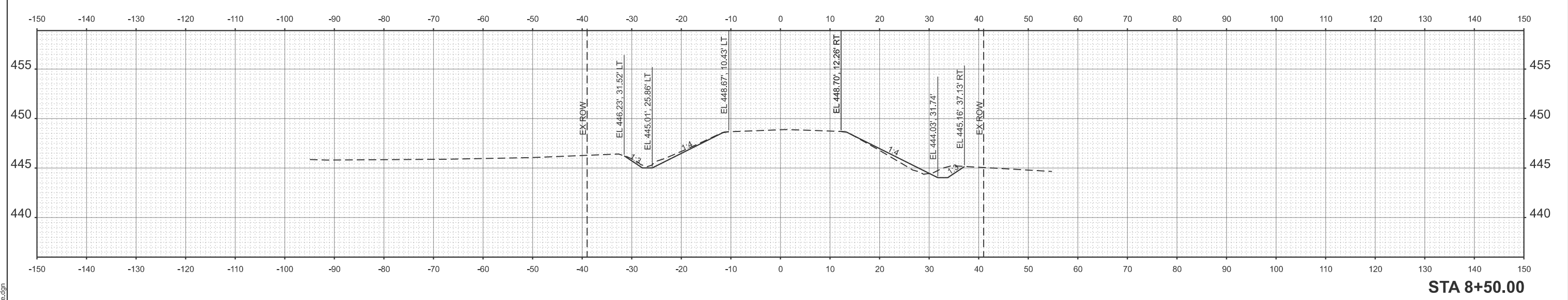
PLAN AND PROFILE

SCALE: 1"=20' SHEET Plan 1 OF 1 SHEETS STA. 6+50.00 TO STA. 12+50.00

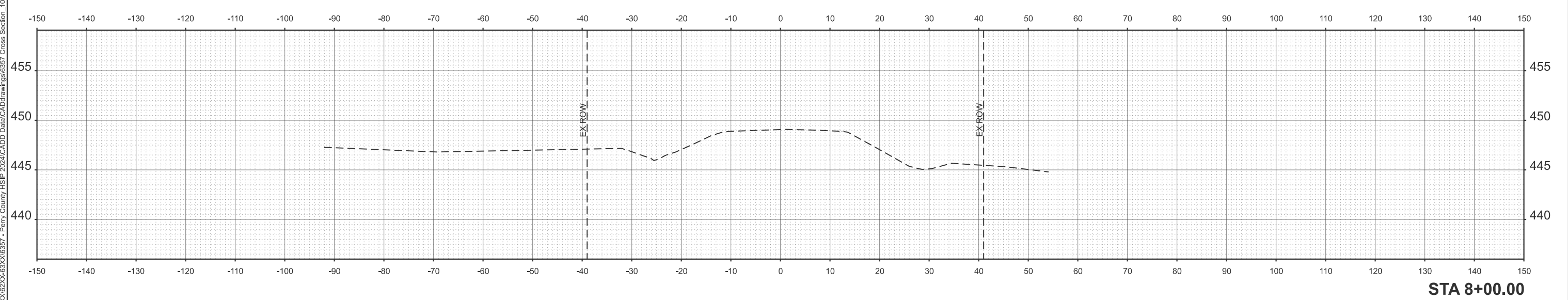
F.A.S. RTE.	SECTION	COUNTY	TOTAL SHEETS	SHEET NO.
1824	24-00155-00-SP	PERRY	9	5
CONTRACT NO. 99774				
ILLINOIS FED. AID PROJECT				



STA 9+00.00



STA 8+50.00



STA 8+00.00

MODEL: Kathleen Road - 8+00.00 [Sheet]
 FILE NAME: P:\6XXXX\24-00155-00-SP-Perry County HSP 2024\CADD Data\CADD Drawings\6357 Cross Section_10 Scale.dgn



USER NAME = dmmamoser
 PLOT DATE = 3/23/2026

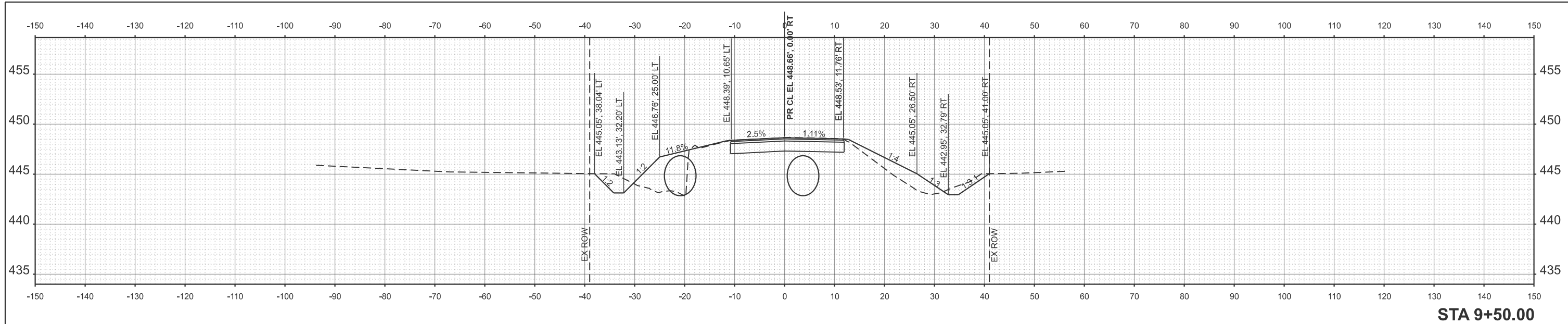
DESIGNED -	REVISED -
DRAWN -	REVISED -
CHECKED -	REVISED -
DATE -	REVISED -

STATE OF ILLINOIS
DEPARTMENT OF TRANSPORTATION

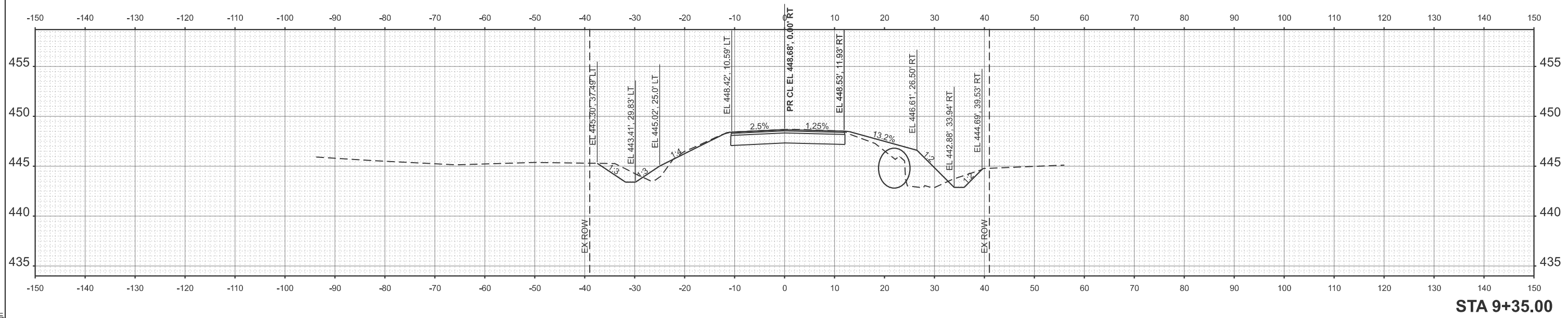
CROSS SECTION
8+00.00 TO 9+00.00

SCALE: 1"=10' SHEET 1 OF 4 SHEETS STA. TO STA.

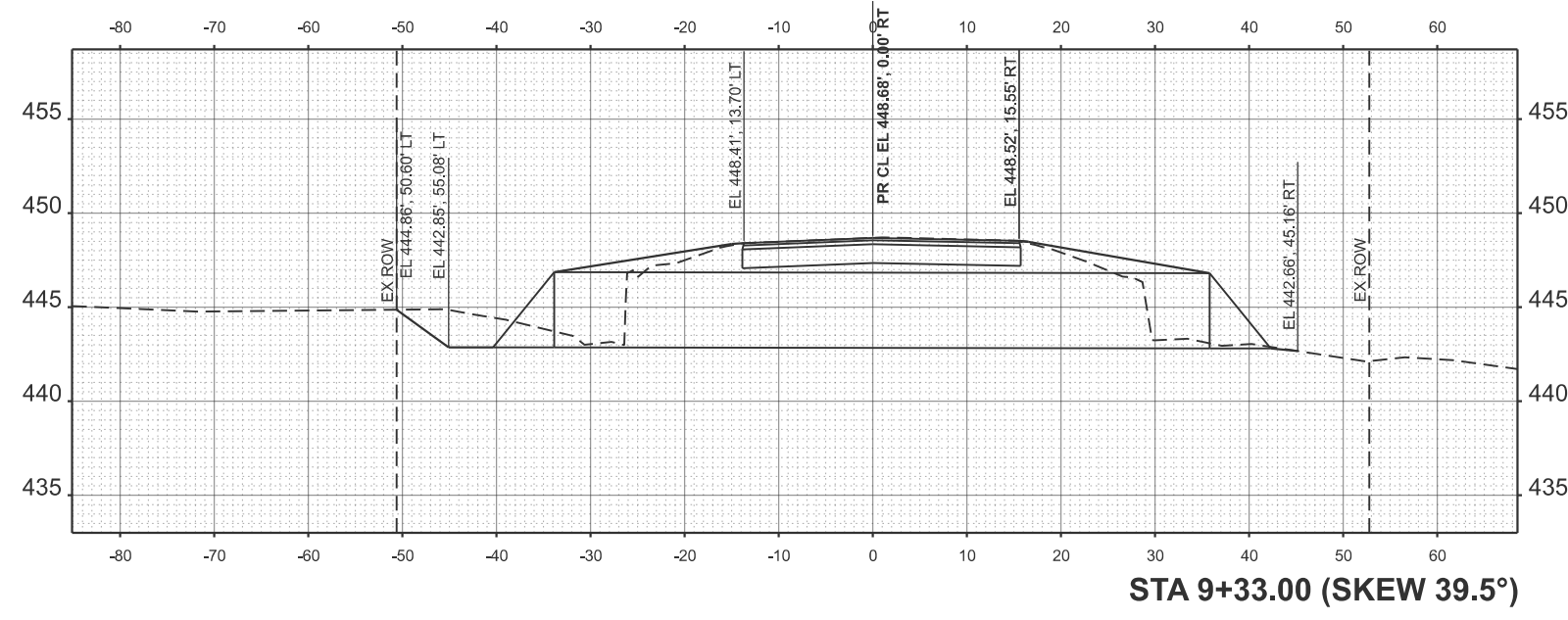
F.A.S. RTE.	SECTION	COUNTY	TOTAL SHEETS	SHEET NO.
1824	24-00155-00-SP	PERRY	9	6
CONTRACT NO. 99774				
ILLINOIS FED. AID PROJECT				



STA 9+50.00



STA 9+35.00



STA 9+33.00 (SKEW 39.5°)

MODEL: Kaitheena Road - 9+50.00 [Sheet]
 FILE NAME: P:\6XXXX\B2X-63XX\6357 - Perry County HSP 2024\CADD Data\CADDrawings\6357 Cross Section_10 Scale.dgn



USER NAME = dmmamoser
 PLOT DATE = 3/23/2026

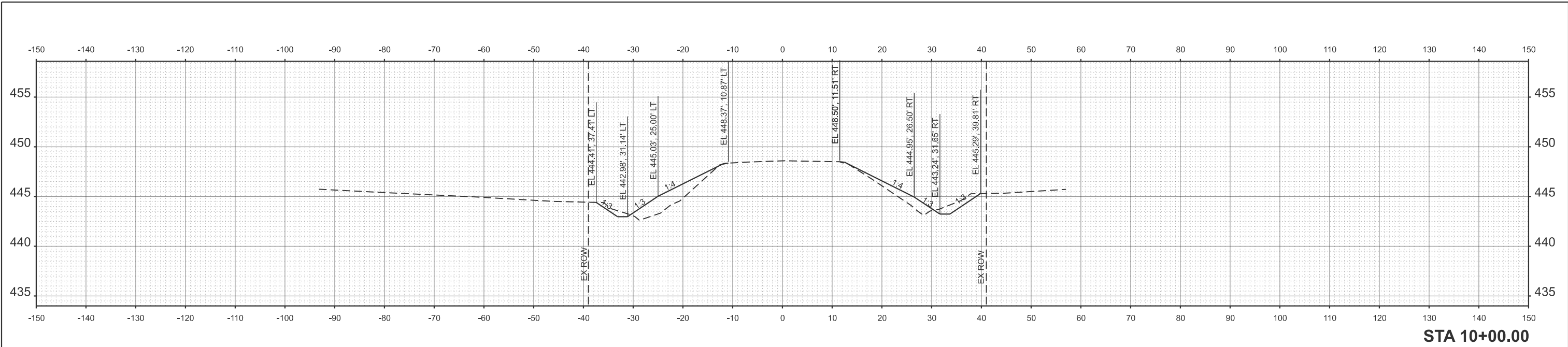
DESIGNED -	REVISD -
DRAWN -	REVISD -
CHECKED -	REVISD -
DATE -	REVISD -

STATE OF ILLINOIS
 DEPARTMENT OF TRANSPORTATION

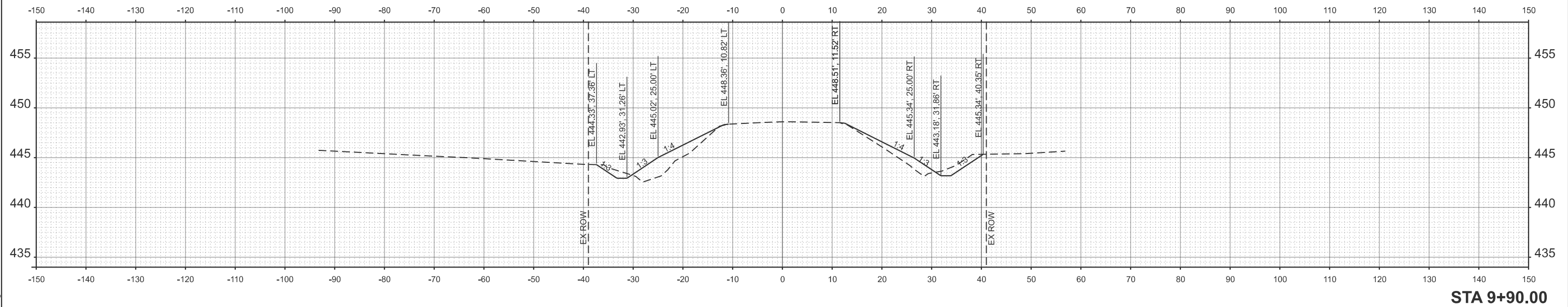
CROSS SECTION
 9+33.00 TO 9+50.00

SCALE: 1"=10' SHEET 2 OF 4 SHEETS STA. TO STA.

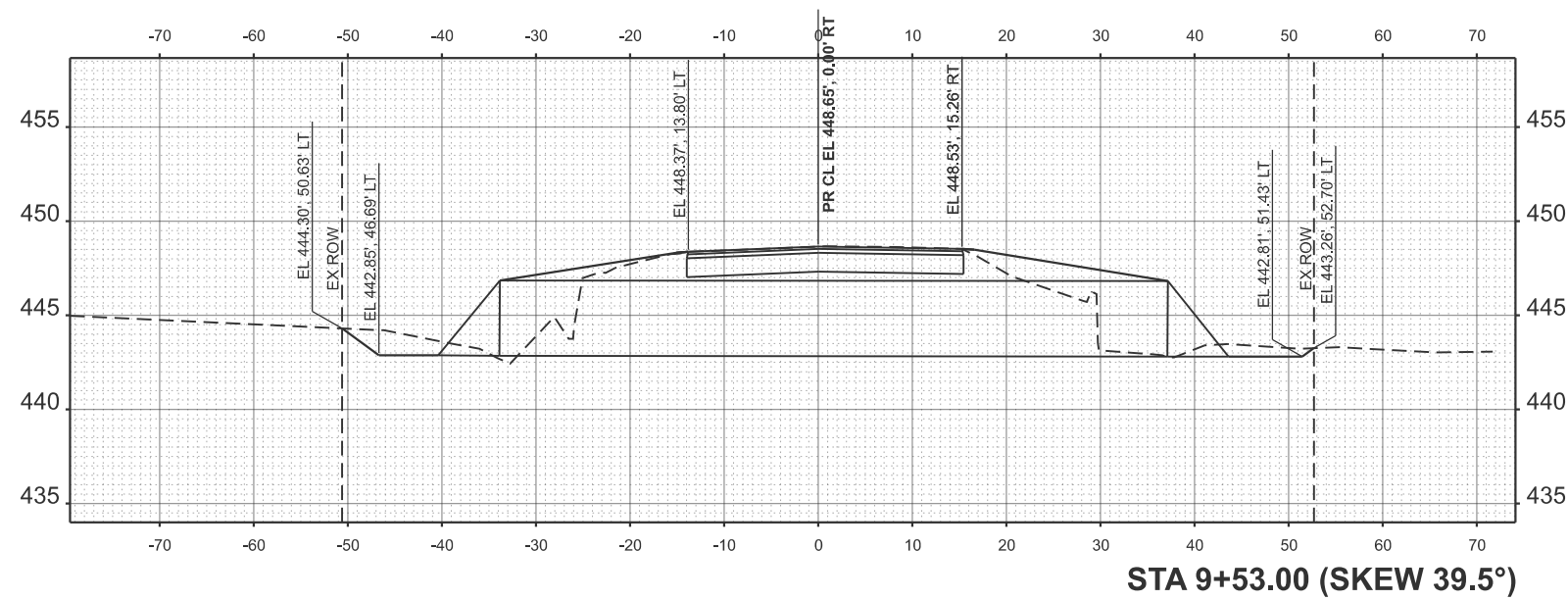
F.A.S. RTE.	SECTION	COUNTY	TOTAL SHEETS	SHEET NO.
1824	24-00155-00-SP	PERRY	9	7
CONTRACT NO. 99774				
ILLINOIS FED. AID PROJECT				



STA 10+00.00



STA 9+90.00



STA 9+53.00 (SKEW 39.5°)

MODEL: Kathleen Road - 9+90.00 (Sheet)
 FILE NAME: P:\6XXXX\B2X-63XX\6357 - Perry County HSP 2024\CADD Data\CADDrawings\6357 Cross Section_10 Scale.dgn



USER NAME = dmmamoser	DESIGNED -	REVISED -
	DRAWN -	REVISED -
	CHECKED -	REVISED -
PLOT DATE = 3/23/2026	DATE -	REVISED -

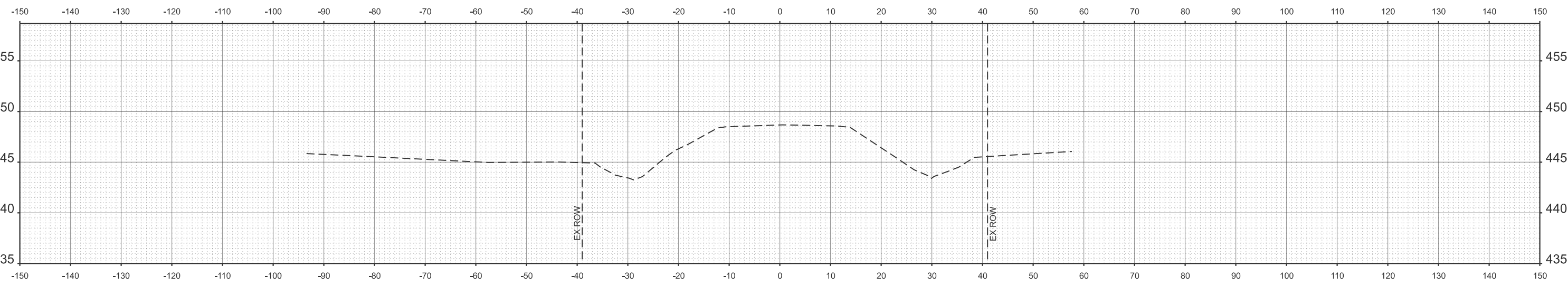
STATE OF ILLINOIS
DEPARTMENT OF TRANSPORTATION

CROSS SECTION
9+53.00 TO 10+00.00

SCALE: 1"=10' SHEET 3 OF 4 SHEETS STA. TO STA.

F.A.S. RTE.	SECTION	COUNTY	TOTAL SHEETS	SHEET NO.
1824	24-00155-00-SP	PERRY	9	8
CONTRACT NO. 99774				
ILLINOIS FED. AID PROJECT				

MODEL: Kaitheena Road - 10+50.00 (Sheet)
 FILE NAME: P:\6XXXX\22\X-63XX\6357 - Perry County HSP 2024\CADD Data\CAD Drawings\6357 Cross Section_10 Scale.dgn



STA 10+50.00



USER NAME = dmammoser	DESIGNED -	REVISED -
	DRAWN -	REVISED -
	CHECKED -	REVISED -
PLOT DATE = 3/23/2026	DATE -	REVISED -

**STATE OF ILLINOIS
 DEPARTMENT OF TRANSPORTATION**

**CROSS SECTION
 10+50.00**

SCALE: 1"=10' SHEET 4 OF 4 SHEETS STA. TO STA.

F.A.S. RTE. 1824	SECTION 24-00155-00-SP	COUNTY PERRY	TOTAL SHEETS 9	SHEET NO. 9
CONTRACT NO. 99774			ILLINOIS FED. AID PROJECT	