

STATE OF ILLINOIS
DEPARTMENT OF TRANSPORTATION

F.A. RTE.	SECTION	COUNTY	TOTAL SHEETS	SHEET NO.
111	28Q	ST. CLAIR	9	1
		ILLINOIS	CONTRACT NO. 76V22	
		FAU 9128, FAU 9128A, FAP 582	ST. CLAIR, MADISON	

FOR INDEX OF SHEETS, SEE SHEET NO. 2

PROPOSED
HIGHWAY PLANS

FAU ROUTE 9128 (IL 111)
COLLINSVILLE RD.
SECTION 28Q
CHIP SEAL
ST. CLAIR/MADISON COUNTY

C-98-127-26

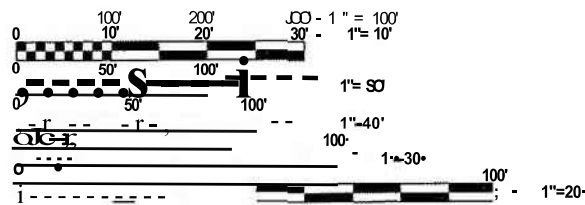
TRAFFIC DATA

ROSELAKE ROAD TO N 45TH ST
2023 ADT = 3150 (ACTUAL)
2026 ADT = 3250 (ESTIMATED)
2046 ADT = 4000 (ESTIMATED)
SU=7.1% MU=6.3%

N 45TH STREET TO N 111
2023 ADT = 4000 (ACTUAL)
2026 ADT = 4100 (ESTIMATED)
2046 ADT = 5000 (ESTIMATED)
SU = 4.0% MU = 4.5%

N 111 TO SIL 111
2025 ADT = 4100 (ACTUAL)
2026 ADT = 4100 (ESTIMATED)
2046 ADT = 5100 (ESTIMATED)
SU=S.4% MU=4.0%

SIL 111 TO JOINT EAST OF JONDRO ST
2023 ADT = 3950 (ACTUAL)
2026 ADT = 4100 (ESTIMATED)
2046 ADT = 5000 (ESTIMATED)
SU = 2.8% MU = 3.8%

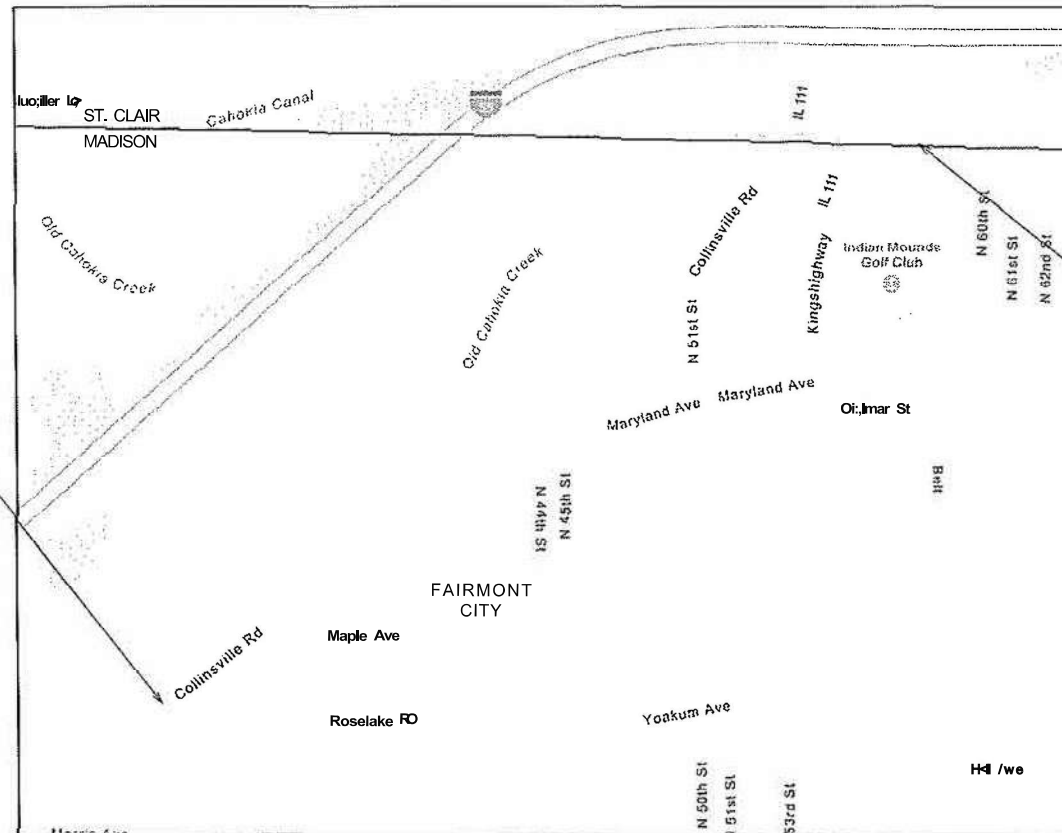


FULL SIZE PLANS HAVE BEEN PREPARED USING STANDARD ENGINEERING SCALES. REDUCED SIZED PLANS WILL NOT CONFORM TO STANDARD SCALES. IN MAKING MEASUREMENTS ON REDUCED PLANS, THE ABOVE SCALES MAY BE USED,

J,U,L,I,E,
JOINT UTILITY LOCATION INFORMATION FOR EXCAVATION
1-800-892-0123
OR811

PROJECT ENGINEER: BILLIE OWEN
PROJECT MANAGER: JAMIE TODT

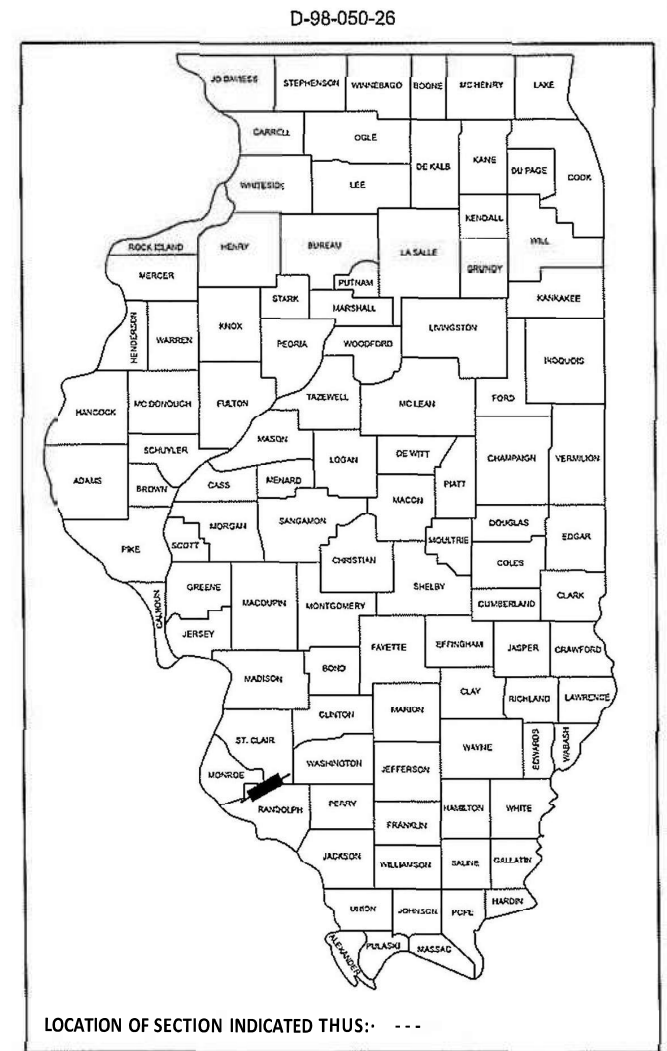
CONTRACT NO. 76V22



BEGIN PROJECT
(0.1 MI W OF ROSELAKE RO.)
STA60+50
LAT: 38°38'30.66" N
LON: 90°7'11.75" W

END PROJECT
(JOINT EAST OF JONDRO ST.)
STA 171+50
LAT: 38°39'33.80" N
LONG: 90°5'21.4" W

GROSS LENGTH= 11,100 FT. = 2.10 MILE
NET LENGTH = 11,100 FT. = 2.10 MILE



LOCATION OF SECTION INDICATED THUS: - - -

STATE OF ILLINOIS
DEPARTMENT OF TRANSPORTATION

SUBMITTED 5/14 20 26
Con. N. Owen
REGIONAL ENGINEER

June 26, 2026
Scott E. [Signature]
ENGINEER OF DESIGN AND ENVIRONMENT

June 26, 2026
[Signature]
DIRECTOR OF HIGHWAYS PROJECT IMPLEMENTATION

PRINTED BY THE AUTHORITY
OF THE STATE OF ILLINOIS

INDEX OF SHEETS

1. COVER SHEET
2. INDEX, HIGHWAY STANDARDS, GENERAL NOTES, MIXTURE REQUIREMENTS & COMMITMENTS
- 3-4. SUMMARY OF QUANTITIES
5. TYPICAL SECTIONS
6. SCHEDULE OF QUANTITIES
7. WESTERN INTERSECTION PAVEMENT MARKING
8. EASTERN INTERSECTION PAVEMENT MARKING
9. LOCATION MAP

HIGHWAY STANDARDS

000001-09	STANDARD SYMBOLS ,ABBREVIATIONS AND PATTERNS
001006	DECIMAL OF AN INCH AND OF A FOOT
701101-05	OFF-ROAD OPERATIONS, MULTILANE, 15' TO 24" FROM PAVEMENT EDGE
701106-02	OFF-ROAD OPERATIONS, MULTILANE, MORE THAN 15' AWAY
701426-09	LANE CLOSURE MULTILANE INTERMITTENT OR MOVING OPERATIONS 45 MPH OR MORE
701606-10	URBAN SINGLE LANE CLOSURE MULTILANE, 2W WITH MOUNTABLE MEDIAN
701611-01	URBAN HALF ROAD CLOSURE MULTILANE, 2W WITH MOUNTABLE MEDIAN
701701-10	URBAN LANE CLOSURE MULTILANE INTERSECTION
701901-11	TRAFFIC CONTROL DEVICES
780001-05	TYPICAL PAVEMENT MARKINGS
781001-04	TYPICAL APPLICATIONS RAISED REFLECTIVE PAVEMENT MARKERS

GENERAL NOTES

1. THE UTILITIES KNOWN TO HAVE FACILITIES WITHIN THE PROJECT AREA ARE AS FOLLOWS:
 - AMEREN ILLINOIS
 - AT&T ILLINOIS
 - CHARTER COMMUNICATIONS, INC
 - ILLINOIS AMERICAN WATER COMPANY
 - VERIZON BUSINESS
 - ZAYO GROUP LLC
2. NO SURVEY WAS PERFORMED FOR THIS PROJECT AND THE PLANS WERE CREATED USING MICROFILM AND FIELD MEASUREMENTS.
3. THE PROPOSED PAVEMENT MARKING SHALL MATCH THE LOCATIONS OF THE EXISTING PAVEMENT MARKING, AS DIRECTED BY THE ENGINEER.
4. THE DEPARTMENT STRONGLY ENCOURAGES THE PRIME CONTRACTOR AND THEIR APPROVED SUB-CONTRACTORS TO HIRE MINORITY, WOMEN AND DISADVANTAGED INDIVIDUALS FROM ITS FEDERALLY FUNDED HIGHWAY CONSTRUCTION CAREERS TRAINING PROGRAM (HCCTP) TO HELP MEET WORKFORCE AND TRAINEE GOALS. THIS PROGRAM IS TRAINING MINORITIES, WOMEN AND DISADVANTAGED INDIVIDUALS IN HIGHWAY CONSTRUCTION RELATED SKILLS, E.G., MATH FOR THE TRADES, JOB READINESS, TECHNICAL SKILLS COURSEWORK (CARPENTRY, CONCRETE FLATWORK, BLUEPRINT READING, SITE PLANS, SITE WORK, TOOLS USE, ETC.) AND OSHA 10 HOUR CERTIFICATION, TO PREPARE THEM FOR A CAREER IN THE HIGHWAY CONSTRUCTION TRADES. GRADUATES ARE WELL-TRAINED AND READY TO BECOME PRODUCTIVE ENTRY-LEVEL CONSTRUCTION WORKERS. CONTACT THE DISTRICT 8 EEO OFFICE AT 618-346-3360 AND/OR THE HCCTP COORDINATOR AT 618-874-6528 TO LEARN MORE ABOUT THE PROGRAM AND FOR ASSISTANCE IN MEETING WORKFORCE AND TRAINEE GOALS.

5. THE VOID IN THE PAVEMENT WHICH RESULTS FROM THE RAISED REFLECTIVE PAVEMENT MARKER REMOVAL SHALL BE REPAIRED WITH MATERIAL AS DIRECTED BY THE ENGINEER, THE MATERIAL AND WORK SHALL BE PAID FOR IN ACCORDANCE WITH ARTICLE 783 OF THE STANDARD SPECIFICATIONS.
6. ANY MANHOLES OR WATER VALVES IN PAVEMENT SHALL BE COVERED WITH HEAVY PAPER AND SAND PRIOR TO SEAL COATING.
7. THE RESIDENT ENGINEER SHALL VERIFY THE EXISTENCE OF HIGHWAY LIGHTING, INTELLIGENT TRANSPORTATION SYSTEMS (I.T.S.) UTILITIES, AND/OR ELECTRICAL CABLES ASSOCIATED WITH TRAFFIC SIGNALS WITHIN THE PROJECT LIMITS. IF ANY OF THESE EXIST WITHIN THE PROJECT LIMITS, AND IF THESE ITEMS REQUIRE LOCATING, THE CONTRACTOR SHALL BE DIRECTED TO DO SO ACCORDING TO SECTION 803 OF THE STANDARD SPECIFICATIONS, THIS WORK SHALL BE PAID FOR ACCORDING TO ARTICLE 109.04 OF THE STANDARD SPECIFICATIONS.
8. FOUR CHANGEABLE MESSAGE SIGNS SHALL BE REQUIRED FOR THIS PROJECT. THEY SHALL BE PLACED TWO WEEKS PRIOR TO ANY LANE CLOSURE AT THE BEGINNING AND END OF THE PROJECT LIMITS AND ON BOTH APPROACHES OF IL 111, AND SHALL REMAIN UP FOR THE DURATION OF THE PROJECT.
9. AGGREGATE QUALITY SHALL BE CLASS C OR BETTER. THE CONTRACTOR SHALL USE CA-16 FOR THE COVER AGGREGATE AND THE SEAL AGGREGATE, THE COVER COAT APPLICATION AND SEAL COAT APPLICATION CANNOT BE PERFORMED ON THE SAME DAY. THE SUBSTRATE SURFACE CONDITION OF THE EXISTING PAVEMENT SURFACE IS BADLY POKED, POROUS, OXIDIZED.
10. A QUANTITY OF PATCHING HAS BEEN INCLUDED IN THIS CONTRACT TO BE UTILIZED AS DIRECTED BY THE RESIDENT ENGINEER.
11. THE FOLLOWING MIX CHART APPLIES TO THIS CONTRACT:

MIXTURE USE	PARTIAL DEPTH PATCH
AC/PG	PG 64-22
DESIGN AIR VOIDS	4.0% @ NDES=70
MIX COMPOSITION (GRADATION)	IL 9.5
FRICTION AGG	MIXTURE "C"
QUALITY MGMT PROGRAM	QC/QA
MATTRANDEV REQUIRED?	NO

COMMITMENTS

NONE

MODEL: General Notes (Sheet)
FILE NAME: c:\p\work\pav\rob\robert.hughes@illinois.gov\412177\0876\22-shr-gemnote.dgn

USER NAME = Robert.Hughes	DESIGNED -	REVISED -	STATE OF ILLINOIS DEPARTMENT OF TRANSPORTATION	SHEET INDEX, HIGHWAY STANDARDS, GENERAL NOTES, MIXTURE REQUIREMENTS & COMMITMENTS	F.A.-RTE.	SECTION	COUNTY	TOTAL SHEETS	SHEET NO.	
	DRAWN -	REVISED -			*	28Q	**	9	2	
	CHECKED -	REVISED -			CONTRACT NO. 76V22					
PLOT DATE = 6/12/2026	DATE -	REVISED -			SCALE:	SHEET 1 OF 1 SHEETS	STA.	TO STA.	ILLINOIS FED. AID PROJECT	

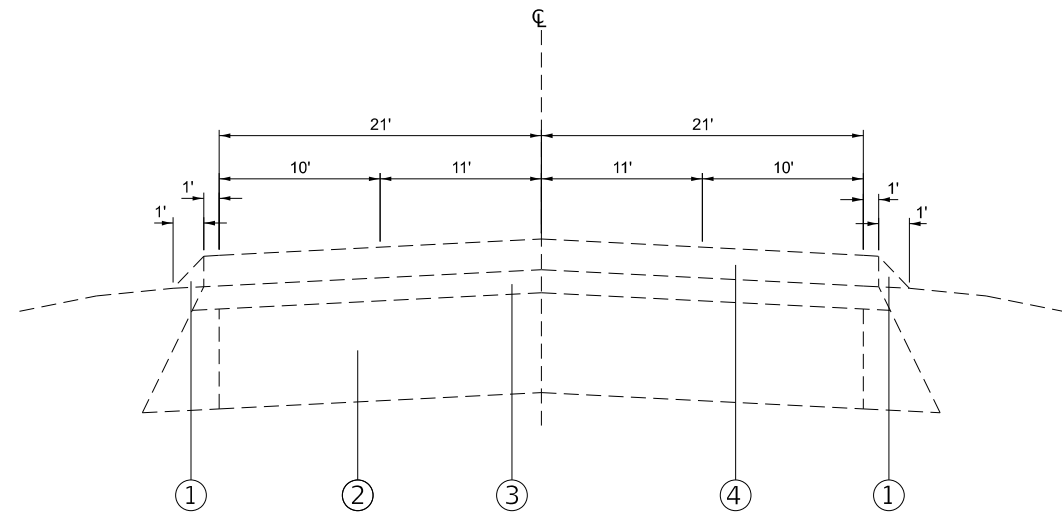
MODEL: I:\unlited [Sheet]
 FILE NAME: c:\pw\work\paw\robert.hughes@illinois.gov\12177\0876\22-shr-S00.dgn

CODE NO.	ITEM	UNIT	TOTAL QUANTITY	CONSTRUCTION CODE	
				ST. CLAIR COUNTY	MADISON COUNTY
				ROADWAY	ROADWAY
				0005 URBAN	0005 URBAN
67100100	MOBILIZATION	L SUM	1	0.98	0.02
70102625	TRAFFIC CONTROL AND PROTECTION, STANDARD 701606	L SUM	1	0.98	0.02
70102634	TRAFFIC CONTROL AND PROTECTION, STANDARD 701611	L SUM	1	0.98	0.02
70102635	TRAFFIC CONTROL AND PROTECTION, STANDARD 701701	L SUM	1	0.5	0.5
70107025	CHANGEABLE MESSAGE SIGN	CAL DA	208	104	104
70300100	SHORT TERM PAVEMENT MARKING	FOOT	3772	3700	72
70300150	SHORT TERM PAVEMENT MARKING REMOVAL	SQ FT	1258	1234	24
* 78001100	PAINT PAVEMENT MARKING - LETTERS AND SYMBOLS	SQ FT	135.2	83.2	52
* 78001130	PAINT PAVEMENT MARKING - LINE 6"	FOOT	47660	46710	950
* 78001180	PAINT PAVEMENT MARKING - LINE 24"	FOOT	108	83	25
* 78100100	RAISED REFLECTIVE PAVEMENT MARKER	EACH	499	481	18
78300200	RAISED REFLECTIVE PAVEMENT MARKER REMOVAL	EACH	499	481	18
X1500005	BITUMINOUS SURFACE TREATMENT, A2	SQ YD	55423	54315	1108
X4060107	BITUMINOUS MATERIALS (FOG SEAL)	POUND	22170	21727	443

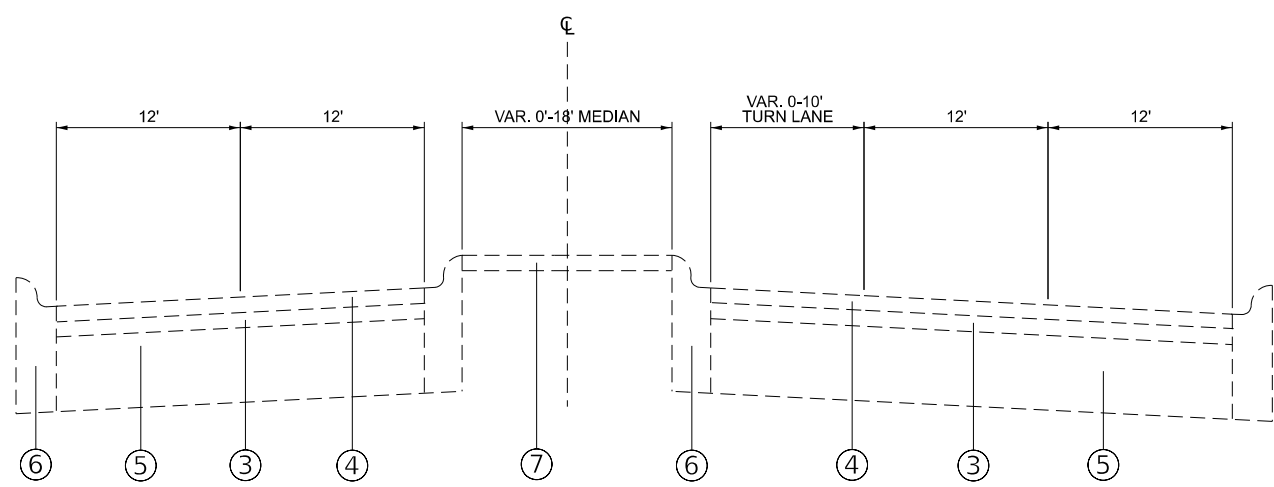
* SPECIALTY ITEM

REV - MS

USER NAME = Robert.Hughes	DESIGNED -	REVISED -	STATE OF ILLINOIS DEPARTMENT OF TRANSPORTATION	SUMMARY OF QUANTITIES			FA-RTE.	SECTION	COUNTY	TOTAL SHEETS	SHEET NO.
	DRAWN -	REVISED -					*	28Q	**	9	3
	CHECKED -	REVISED -		CONTRACT NO. 76V22							
PLOT DATE = 5/13/2026	DATE -	REVISED -		SCALE:	SHEET 1	OF 2	SHEETS	STA.	TO STA.	ILLINOIS FED. AID PROJECT	



TYPICAL SECTION
STA. 60+50 TO STA. 145+50



TYPICAL SECTION
STA. 145+50 TO STA. 171+50

LEGEND

- ① EXISTING AGGREGATE WEDGE SHOULDER, TYPE B
- ② EXISTING CONCRETE PAVEMENT - 13"
- ③ EXISTING HOT-MIX ASPHALT OVERLAY - 1½"
- ④ EXISTING HOT-MIX ASPHALT SURFACE COURSE - 1½"
- ⑤ EXISTING CONCRETE PAVEMENT - 9"-7"-9"
- ⑥ EXISTING CURB AND GUTTER
- ⑦ EXISTING MEDIAN

MODEL: Typical (Sheet)
FILE NAME: c:\p\work\pav\robert.hughes@illinois.gov\4121177\087622-shr-typical.dgn

USER NAME = Robert,Hughes	DESIGNED -	REVISED -
	DRAWN -	REVISED -
	CHECKED -	REVISED -
PLOT DATE = 4/22/2026	DATE -	REVISED -

**STATE OF ILLINOIS
DEPARTMENT OF TRANSPORTATION**

TYPICAL SECTIONS

SCALE: SHEET 1 OF 1 SHEETS STA. TO STA.

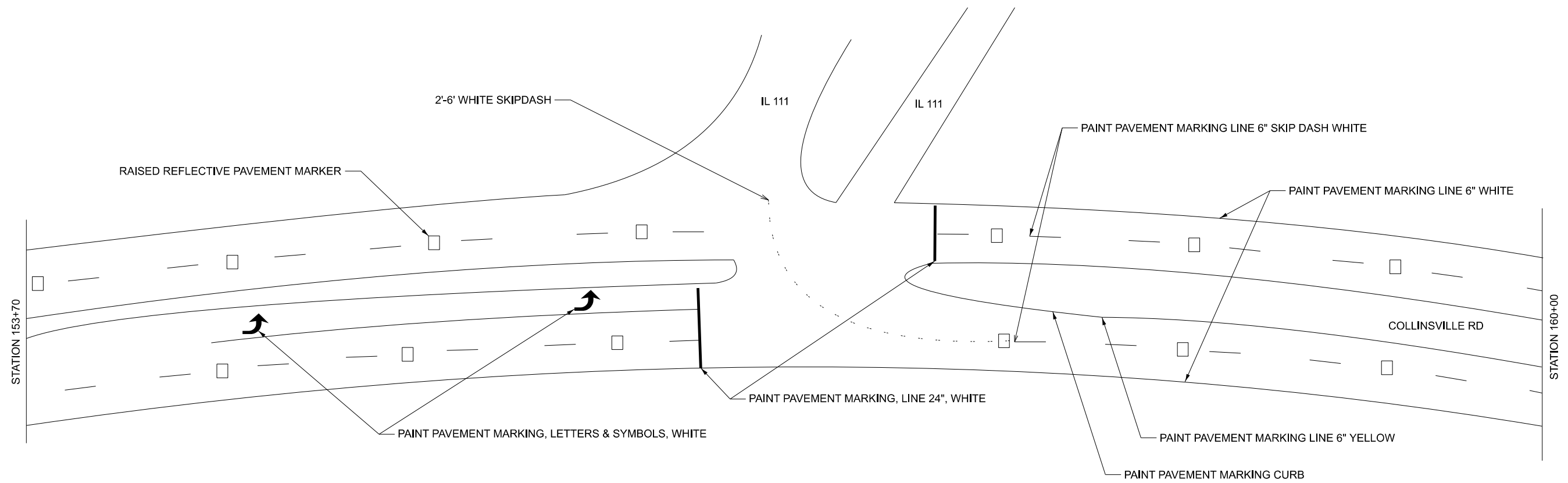
F.A.-RTE.	SECTION	COUNTY	TOTAL SHEETS	SHEET NO.
*	28Q	**	9	5
CONTRACT NO. 76V22				

PAVEMENT MARKINGSCHEDULE														
LOCATION		PAINT PAVEMENT MARKING / REMOVAL						SHORT TERM PAVEMENT MARKING	SHORT TERM PAVEMENT MARKING REMOVAL	RAISED REFLECTIVE PAVEMENT MARKER		RAISED REFLECTIVE PAVEMENT MARKER REMOVAL	TEMPORARY RAISED PAVEMENT MARKER	
STATION		LINE - 6"		LINE 24"		LETTERS AND SYMBOLS	CURB			ONE WAY CRYSTAL	TWO WAY AMBER			
FROM	TO	YELLOW SOLID	SKIP-DASH WHITE	WHITE SOLID	SOLID WHITE	SQ FT	YELLOW SOLID	FEET	SQ FT			EACH	EACH	EACH
		FEET	FEET	FEET	FEET		FEET							
60+50	145+50	17000	4250	15655	0	0	0	2888	963	213	213	426	490	
145+50	171+50	4910	1230	4615	108	135.2	3550	884	295	65	8	73	30	
TOTAL		47660				108	135.2	3550	3772	1258	499		499	520

RESURFACING SCHEDULE							
STATION		DIMENSION		AREA	BITUMINOUS SURFACE TREATMENT, A2	BITUMINOUS MATERIALS (FOG SEAL)	NOTES
FROM	TO	LENGTH	WIDTH				
60+50	145+50	8500	44	374000	41556	16623	
145+50	171+50	2600	48	124800	13867	5547	ADDITIONAL SQUARE FOOTAGE FROM INTERSECTIONS : 4515
TOTAL					55423	22170	

MODEL: Unlited (Sheet)
 FILE NAME: c:\pw_work\pavement\robert.hughes@illinois.gov\12177\0876\22-sht-schedule.dgn

USER NAME = Robert,Hughes	DESIGNED -	REVISED -	STATE OF ILLINOIS DEPARTMENT OF TRANSPORTATION	SCHEDULE OF QUANTITIES				F.A.-RTE.	SECTION	COUNTY	TOTAL SHEETS	SHEET NO.
	DRAWN -	REVISED -						*	28Q	**	9	6
	CHECKED -	REVISED -									CONTRACT NO. 76V22	
PLOT DATE = 5/13/2026	DATE -	REVISED -			SCALE:	SHEET 1	OF 1	SHEETS	STA.	TO STA.	ILLINOIS	FED. AID PROJECT



MODEL: \\western\intersection [Sheet]
 FILE NAME: c:\pw\work\pav\dot\robert.hughes@illinois.gov\4121177\0876\22-shr-pmk.dgn

USER NAME = Robert,Hughes	DESIGNED -	REVISED -
	DRAWN -	REVISED -
	CHECKED -	REVISED -
PLOT DATE = 5/13/2026	DATE -	REVISED -

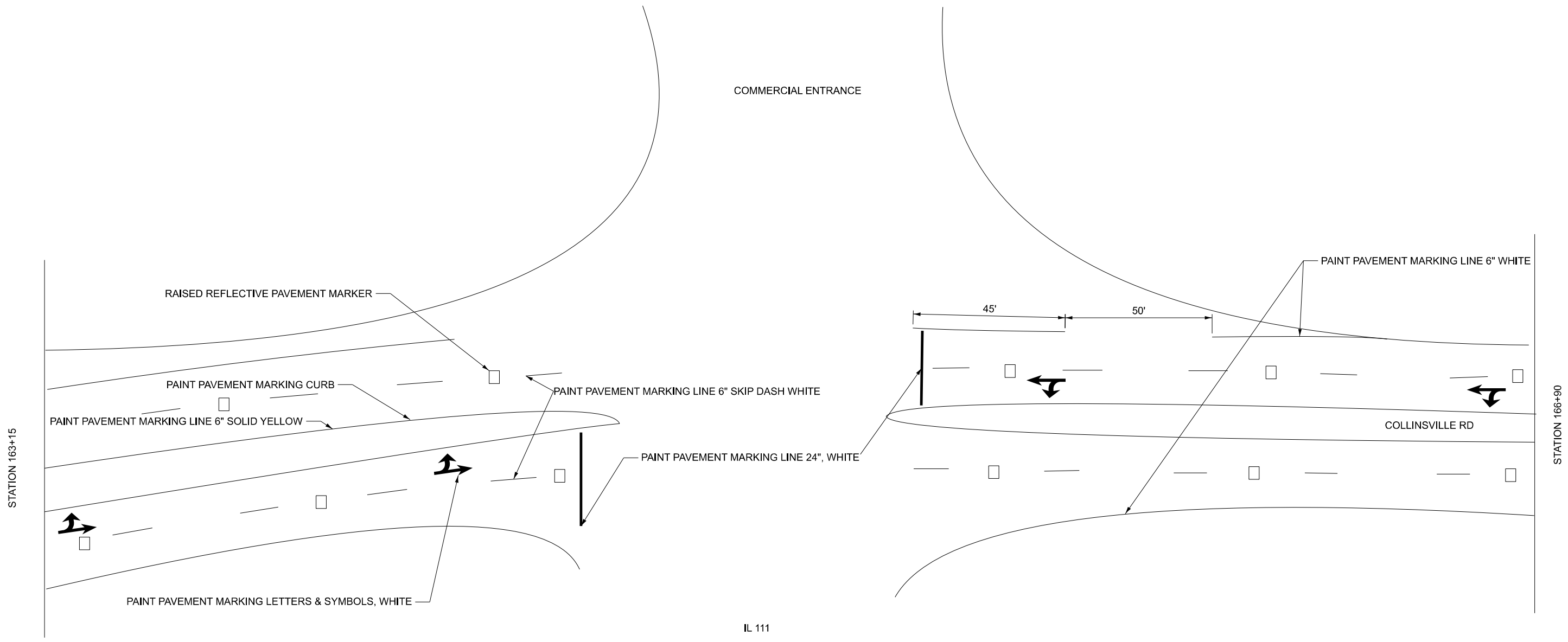
**STATE OF ILLINOIS
DEPARTMENT OF TRANSPORTATION**

WESTERN INTERSECTION PAVEMENT MARKING

SCALE: SHEET 1 OF 2 SHEETS STA. TO STA.

F.A.-RTE.	SECTION	COUNTY	TOTAL SHEETS	SHEET NO.
*	28Q	**	9	7
CONTRACT NO. 76V22				

MODEL: Eastern Intersection (Sheet)
 FILE NAME: c:\pw_work\pavlab\robert.hughes@illinois.gov\4121177\0876\22-sht-pmk.dgn



COMMERCIAL ENTRANCE

STATION 163+15

STATION 166+90

IL 111

COLLINSVILLE RD

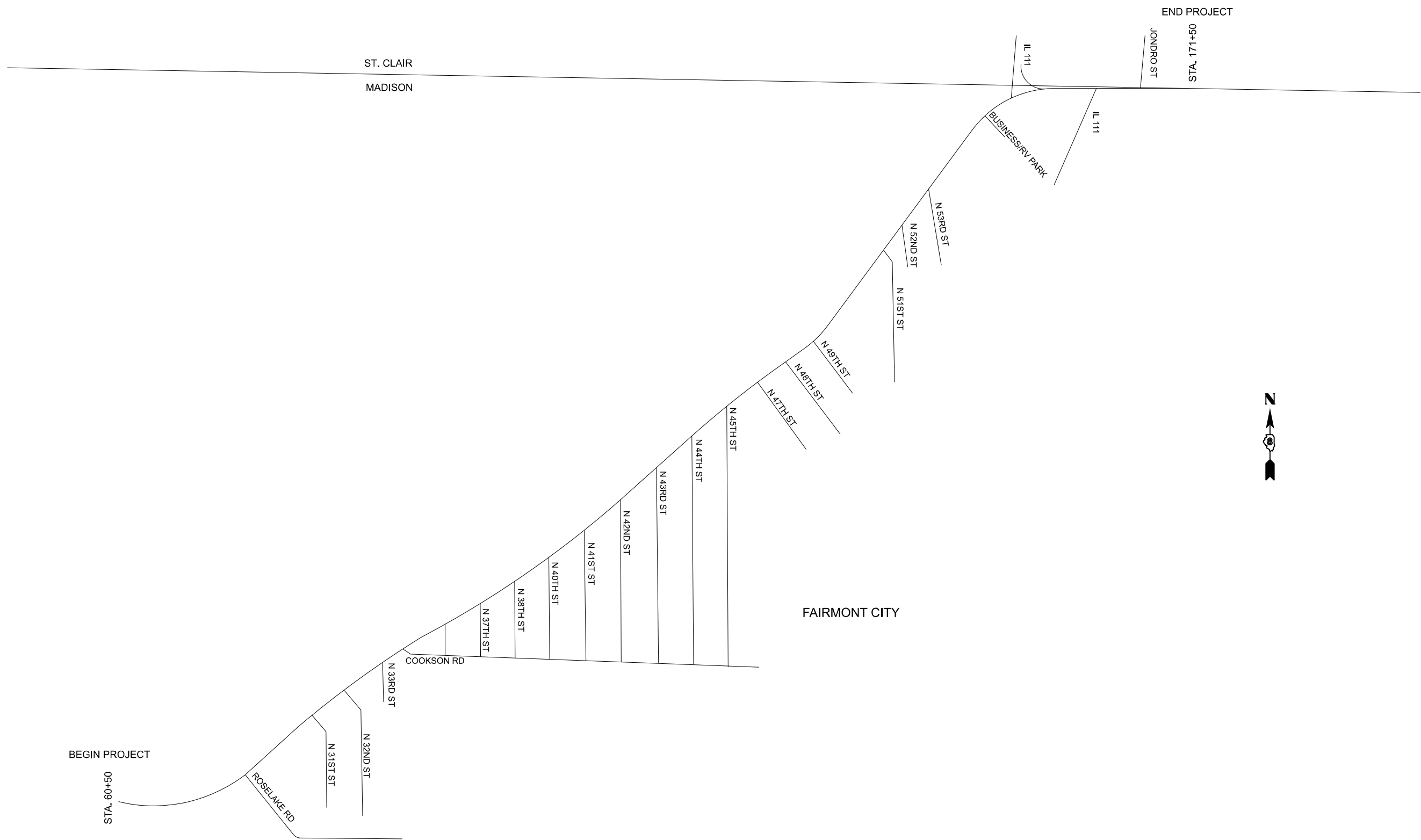
USER NAME = Robert,Hughes	DESIGNED -	REVISED -
	DRAWN -	REVISED -
	CHECKED -	REVISED -
PLOT DATE = 5/13/2026	DATE -	REVISED -

**STATE OF ILLINOIS
 DEPARTMENT OF TRANSPORTATION**

EASTERN INTERSECTION PAVEMENT MARKING

SCALE: SHEET 2 OF 2 SHEETS STA. TO STA.

F.A.-RTE.	SECTION	COUNTY	TOTAL SHEETS	SHEET NO.
*	28Q	**	9	8
CONTRACT NO. 76V22				
ILLINOIS FED. AID PROJECT				



MODEL: LOCATION MAP [Sheet]
 FILE NAME: c:\pw\work\pav\robert.hughes@illinois.gov\4121177\0876\22-st-clair-details.dgn

BEGIN PROJECT

STA. 60+50

ROSELAKE RD

N 31ST ST
N 32ND ST

N 33RD ST

COOKSON RD

N 37TH ST
N 38TH ST

N 40TH ST
N 41ST ST

N 42ND ST
N 43RD ST

N 44TH ST
N 45TH ST

N 47TH ST
N 48TH ST

N 49TH ST
N 51ST ST

N 52ND ST
N 53RD ST

BUSINESS/RV PARK

IL 111

IL 111

JONDRO ST

END PROJECT
STA. 171+50

FAIRMONT CITY

ST. CLAIR
MADISON

USER NAME = Robert,Hughes	DESIGNED -	REVISED -
	DRAWN -	REVISED -
	CHECKED -	REVISED -
PLOT DATE = 5/4/2026	DATE -	REVISED -

**STATE OF ILLINOIS
DEPARTMENT OF TRANSPORTATION**

LOCATION MAP

SCALE: SHEET 1 OF 1 SHEETS STA. TO STA.

F.A.-RTE.	SECTION	COUNTY	TOTAL SHEETS	SHEET NO.
*	28Q	**	9	9
CONTRACT NO. 76V22				
ILLINOIS FED. AID PROJECT				