

STATE OF ILLINOIS
DEPARTMENT OF TRANSPORTATION

F.A. RTE.	SECTION	COUNTY	TOTAL SHEETS	SHEET NO.
*	(Q-1)RS-3, (X,F)RS-4	BOND	5	1
*FAU 9826, FAS 1750		ILLINOIS	CONTRACT NO. 76V21	

FOR INDEX OF SHEETS, SEE SHEET NO. 2

TRAFFIC DATA

LINDER BLVD TO WOBURN RD
2025 ADT = 2400 (ACTUAL)
2027 ADT = 2450 (ESTIMATED)
2047 ADT = 2750 (ESTIMATED)
SU = 5.4% MU = 2.9%

WOBURN RD TO NORTH MAIN ST (IL 140)
2025 ADT = 950 (ACTUAL)
2027 ADT = 975 (ESTIMATED)
2047 ADT = 1100 (ESTIMATED)
SU = 5.3% MU = 3.2%

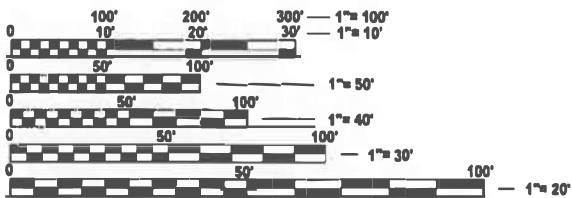
NORTH MAIN ST (IL 140) TO 7TH STREET
2025 ADT = 625 (ACTUAL)
2027 ADT = 625 (ESTIMATED)
2047 ADT = 725 (ESTIMATED)
SU = 6.4% MU = 3.0%

7TH STREET TO SOUTH MAPLE ST (IL 140)
2025 ADT = 900 (ACTUAL)
2027 ADT = 925 (ESTIMATED)
2047 ADT = 1050 (ESTIMATED)
SU = 12.2% MU = 3.3%

SOUTH MAPLE ST (IL 140) TO NORTH MAPLE ST (IL 140)
2025 ADT = 1800 (ACTUAL)
2027 ADT = 1825 (ESTIMATED)
2047 ADT = 2050 (ESTIMATED)
SU = 10.6% MU = 4.4%

NORTH MAPLE ST (IL 140) TO FAYETTE COUNTY LINE
2025 ADT = 625 (ACTUAL)
2027 ADT = 625 (ESTIMATED)
2047 ADT = 725 (ESTIMATED)
SU = 4.8% MU = 1.0%

FUNCTIONAL CLASSIFICATION:
STA 5+48.00 TO STA 136+62.00 = MAJOR COLLECTOR
STA 136+62.00 TO 419+48.00 = MINOR COLLECTOR



FULL SIZE PLANS HAVE BEEN PREPARED USING STANDARD ENGINEERING SCALES. REDUCED SIZED PLANS WILL NOT CONFORM TO STANDARD SCALES. IN MAKING MEASUREMENTS ON REDUCED PLANS, THE ABOVE SCALES MAY BE USED.

J.U.L.I.E.
JOINT UTILITY LOCATION INFORMATION FOR EXCAVATION
1-800-892-0123
OR 811

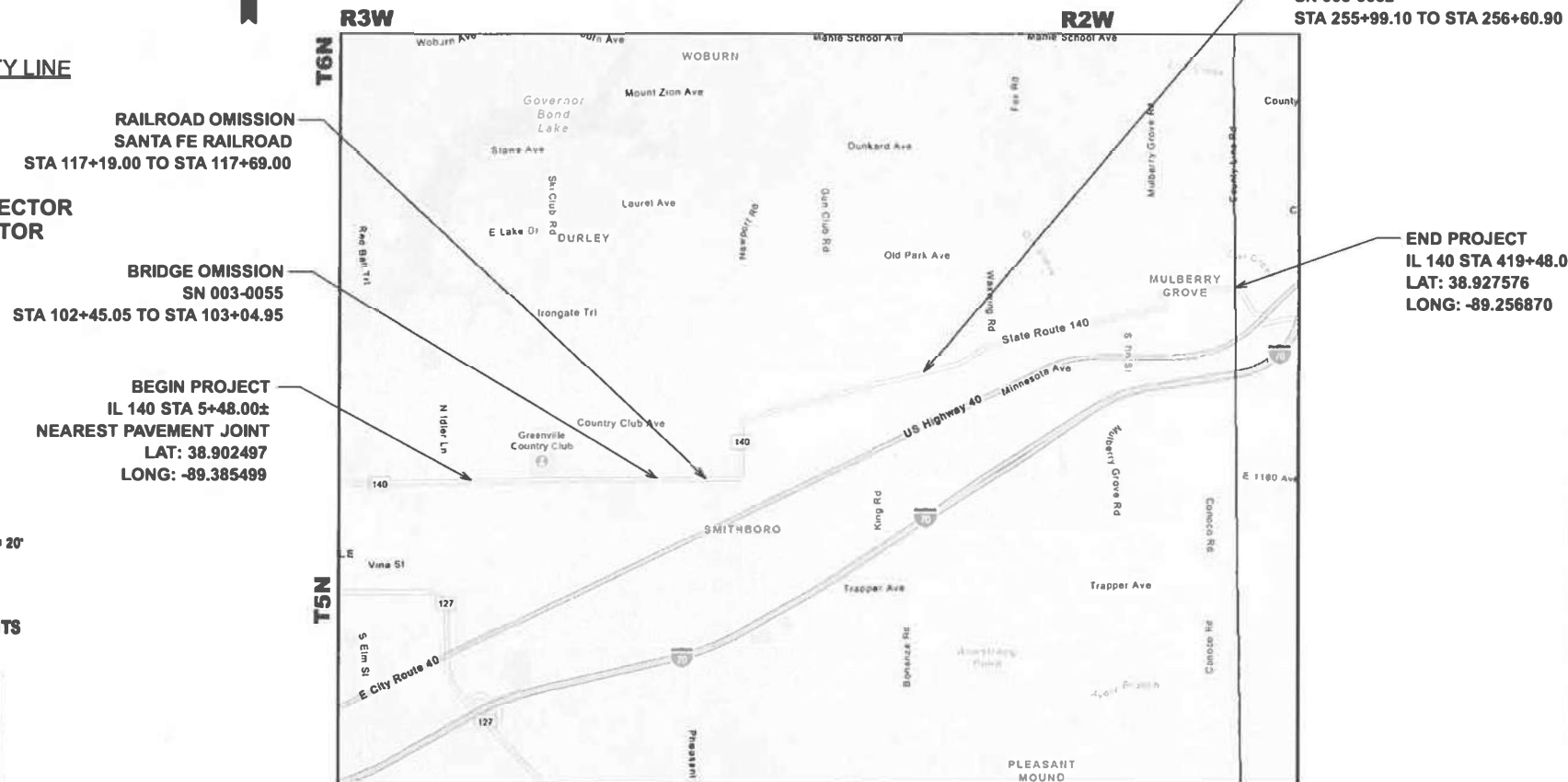
PROJECT ENGINEER: CHERYL KEPLAR
PROJECT MANAGER: NATHAN COX

CONTRACT NO. 76V21

**PROPOSED
HIGHWAY PLANS**

**VARIOUS ROUTES
SECTIONS (Q-1)RS-3, (X,F)RS-4
CHIP SEAL WITH FOG SEAL
BOND COUNTY**

C-98-116-26



RAILROAD OMISSION
SANTA FE RAILROAD
STA 117+19.00 TO STA 117+69.00

BRIDGE OMISSION
SN 003-0055
STA 102+45.05 TO STA 103+04.95

BEGIN PROJECT
IL 140 STA 5+48.00±
NEAREST PAVEMENT JOINT
LAT: 38.902497
LONG: -89.385499

BRIDGE OMISSION
SN 003-0052
STA 255+99.10 TO STA 256+60.90

END PROJECT
IL 140 STA 419+48.00
LAT: 38.927576
LONG: -89.256870

NOT TO SCALE

GROSS LENGTH = 41,400 FT. = 7.84 MILES
NET LENGTH = 41,228.30 FT. = 7.81 MILES



LOCATION OF SECTION INDICATED THUS: - [Symbol]

STATE OF ILLINOIS
DEPARTMENT OF TRANSPORTATION

SUBMITTED 4/30 20 26
Core Nelson
REGIONAL ENGINEER

June 26, 2026
Scott A. [Signature]
ENGINEER OF DESIGN AND ENVIRONMENT

June 26, 2026
[Signature]
DIRECTOR OF HIGHWAYS PROJECT IMPLEMENTATION

PRINTED BY THE AUTHORITY
OF THE STATE OF ILLINOIS

INDEX OF SHEETS

1. COVER SHEET
2. INDEX, HIGHWAY STANDARDS, GENERAL NOTES & COMMITMENTS
3. SUMMARY OF QUANTITIES
4. TYPICAL SECTIONS
5. SCHEDULE OF QUANTITIES

HIGHWAY STANDARDS

- 000001-09 STANDARD SYMBOLS, ABBREVIATIONS & PATTERNS
 001006 DECIMAL OF AN INCH & OF A FOOT
 701006-05 OFF-ROAD OPERATIONS, 2L, 2W, 15' (4.5 m) TO 24" (600 mm) FROM PAVEMENT EDGE
 701201-05 LANE CLOSURE, 2L, 2W, DAY ONLY, FOR SPEEDS ≥ 45 MPH
 701306-04 LANE CLOSURE, 2L, 2W, SLOW MOVING OPERATIONS DAY ONLY, FOR SPEEDS ≥ 45 MPH
 701311-03 LANE CLOSURE 2L, 2W MOVING OPERATIONS - DAY ONLY
 701901-11 TRAFFIC CONTROL DEVICES
 780001-05 TYPICAL PAVEMENT MARKINGS
 781001-04 TYPICAL APPLICATIONS RAISED REFLECTIVE PAVEMENT MARKERS

GENERAL NOTES

1. THE UTILITIES KNOWN TO HAVE FACILITIES WITHIN THE PROJECT AREA ARE AS FOLLOWS:
 - AMEREN ILLINOIS (GAS AND ELECTRIC)
 - AT&T ILLINOIS
 - DEPARTMENT OF CENTRAL MANAGEMENT SERVICES (COMMUNICATIONS)
 - FRONTIER COMMUNICATIONS
 - CITY OF GREENVILLE (WATER & SANITARY SEWER)
 - VILLAGE OF MULBERRY GROVE (WATER & SANITARY SEWER)
 - NEWWAVE COMMUNICATIONS
 - VILLAGE OF SMITHBORO (WATER & SANITARY SEWER)
 - SOUTHWESTERN ELECTRIC COOPERATIVE, INC.
2. ANY MANHOLES OR WATER VALVES IN PAVEMENT SHALL BE COVERED WITH HEAVY PAPER AND SAND PRIOR TO SEAL COATING.
3. NO SURVEY WAS PERFORMED FOR THIS PROJECT AND THE PLANS WERE CREATED USING MICROFILM AND FIELD MEASUREMENTS.
4. THE PROPOSED PAVEMENT MARKING SHALL MATCH THE LOCATIONS OF THE EXISTING PAVEMENT MARKING, AS DIRECTED BY THE ENGINEER.
5. THE DEPARTMENT STRONGLY ENCOURAGES THE PRIME CONTRACTOR AND THEIR APPROVED SUB-CONTRACTORS TO HIRE MINORITY, WOMEN AND DISADVANTAGED INDIVIDUALS FROM ITS FEDERALLY FUNDED HIGHWAY CONSTRUCTION CAREERS TRAINING PROGRAM (HCCTP) TO HELP MEET WORKFORCE AND TRAINEE GOALS. THIS PROGRAM IS TRAINING MINORITIES, WOMEN AND DISADVANTAGED INDIVIDUALS IN HIGHWAY CONSTRUCTION RELATED SKILLS, E.G., MATH FOR THE TRADES, JOB READINESS, TECHNICAL SKILLS COURSEWORK (CARPENTRY, CONCRETE FLATWORK, BLUEPRINT READING, SITE PLANS, SITE WORK, TOOLS USE, ETC.) AND OSHA 10 HOUR CERTIFICATION, TO PREPARE THEM FOR A CAREER IN THE HIGHWAY CONSTRUCTION TRADES. GRADUATES ARE WELL-TRAINED AND READY TO BECOME PRODUCTIVE ENTRY-LEVEL CONSTRUCTION WORKERS. CONTACT THE DISTRICT 8 EEO OFFICE AT 618-346-3360 AND/OR THE HCCTP COORDINATOR AT 618-874-6528 TO LEARN MORE ABOUT THE PROGRAM AND FOR ASSISTANCE IN MEETING WORKFORCE AND TRAINEE GOALS.

6. THE RESIDENT ENGINEER SHALL VERIFY THE EXISTENCE OF HIGHWAY LIGHTING, INTELLIGENT TRANSPORTATION SYSTEMS (I.T.S.) UTILITIES, AND/OR ELECTRICAL CABLES ASSOCIATED WITH TRAFFIC SIGNALS WITHIN THE PROJECT LIMITS. IF ANY OF THESE EXIST WITHIN THE PROJECT LIMITS, AND IF THESE ITEMS REQUIRE LOCATING, THE CONTRACTOR SHALL BE DIRECTED TO DO SO ACCORDING TO SECTION 803 OF THE STANDARD SPECIFICATIONS. THIS WORK SHALL BE PAID FOR ACCORDING TO ARTICLE 109.04 OF THE STANDARD SPECIFICATIONS.
7. TWO CHANGEABLE MESSAGE SIGNS SHALL BE REQUIRED FOR THIS PROJECT. THEY SHALL BE PLACED THE BEGINNING OF THE PROJECT AND AT THE END OF THE PROJECT TWO WEEKS PRIOR TO ANY LANE CLOSURE. THEY SHALL REMAIN UP FOR THE DURATION OF THE PROJECT.
8. THE VOID IN THE PAVEMENT WHICH RESULTS FROM THE RAISED REFLECTIVE PAVEMENT MARKER REMOVAL SHALL BE REPAIRED WITH MATERIAL AS DIRECTED BY THE ENGINEER. THE MATERIAL AND WORK SHALL BE PAID FOR IN ACCORDANCE WITH ARTICLE 783 OF THE STANDARD SPECIFICATIONS.
9. AGGREGATE QUALITY SHALL BE CLASS C OR BETTER. THE CONTRACTOR SHALL USE CA-16 FOR THE COVER AGGREGATE AND THE SEAL AGGREGATE. THE COVER COAT APPLICATION AND SEAL COAT APPLICATION CANNOT BE PERFORMED ON THE SAME DAY. THE SUBSTRATE SURFACE CONDITION OF THE EXISTING PAVEMENT SURFACE IS BADLY POKED, POROUS, OXIDIZED.

COMMITMENTS

NONE

MODEL: General Notes-1 (Sheet)
 FILE NAME: c:\p\work\pavtoillinois.gov\illinois.gov\15117\15117\6\21-shr-qemnote.dgn

USER NAME = joshua.huffstutter	DESIGNED -	REVISED -	STATE OF ILLINOIS DEPARTMENT OF TRANSPORTATION	INDEX, HIGHWAY STANDARDS, GENERAL NOTES & COMMITMENTS	F.A. RTE.	SECTION	COUNTY	TOTAL SHEETS	SHEET NO.	
	DRAWN -	REVISED -			*	(Q-1)RS-3, (X,F)RS-4	BOND	5	2	
	CHECKED -	REVISED -			*FAU 9826, FAS 1750	CONTRACT NO. 76V21				
PLOT DATE = 3/31/2026	DATE -	REVISED -			SCALE:	SHEET 1	OF 1	SHEETS	STA.	TO STA.

CODE NO.	ITEM	UNIT	TOTAL QUANTITY	CONSTR. CODE	
				100% STATE	
				ROADWAY	
				0005	
				RURAL	
67100100	MOBILIZATION	L SUM	1	1	
70100450	TRAFFIC CONTROL AND PROTECTION, STANDARD 701201	L SUM	1	1	
70100460	TRAFFIC CONTROL AND PROTECTION, STANDARD 701306	L SUM	1	1	
70107025	CHANGEABLE MESSAGE SIGN	CAL DA	206	206	
70300100	SHORT TERM PAVEMENT MARKING	FOOT	4358	4358	
70300150	SHORT TERM PAVEMENT MARKING REMOVAL	SQ FT	1375	1375	
* 78001130	PAINT PAVEMENT MARKING - LINE 6"	FOOT	123619	123619	
* 78100100	RAISED REFLECTIVE PAVEMENT MARKER	EACH	2014	2014	
78100200	TEMPORARY RAISED REFLECTIVE PAVEMENT MARKER	EACH	2014	2014	
78300200	RAISED REFLECTIVE PAVEMENT MARKER REMOVAL	EACH	2014	2014	
X1500005	BITUMINOUS SURFACE TREATMENT, A2	SQ YD	100780	100780	
X4060107	BITUMINOUS MATERIALS (FOG SEAL)	POUND	40312	40312	
Z0048665	RAILROAD PROTECTIVE LIABILITY INSURANCE	L SUM	1	1	

* SPECIALTY ITEM

MODEL: SOQ (Sheet)
FILE NAME: c:\p\work\wiscon\illinois.gov\joshua.huffstutler@illinois.gov\1215151\17\07\6\21\seth-SOQ.dgn

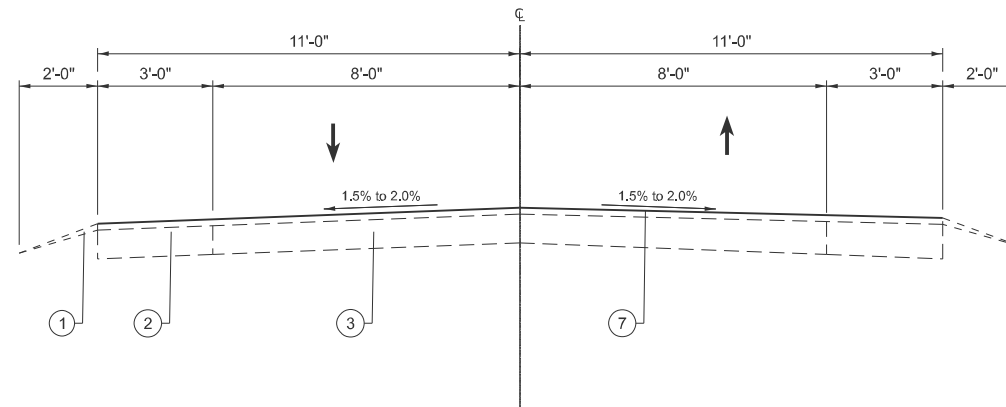
USER NAME = joshua.huffstutler	DESIGNED -	REVISED -
	DRAWN -	REVISED -
	CHECKED -	REVISED -
PLOT DATE = 4/1/2026	DATE -	REVISED -

**STATE OF ILLINOIS
DEPARTMENT OF TRANSPORTATION**

SUMMARY OF QUANTITIES

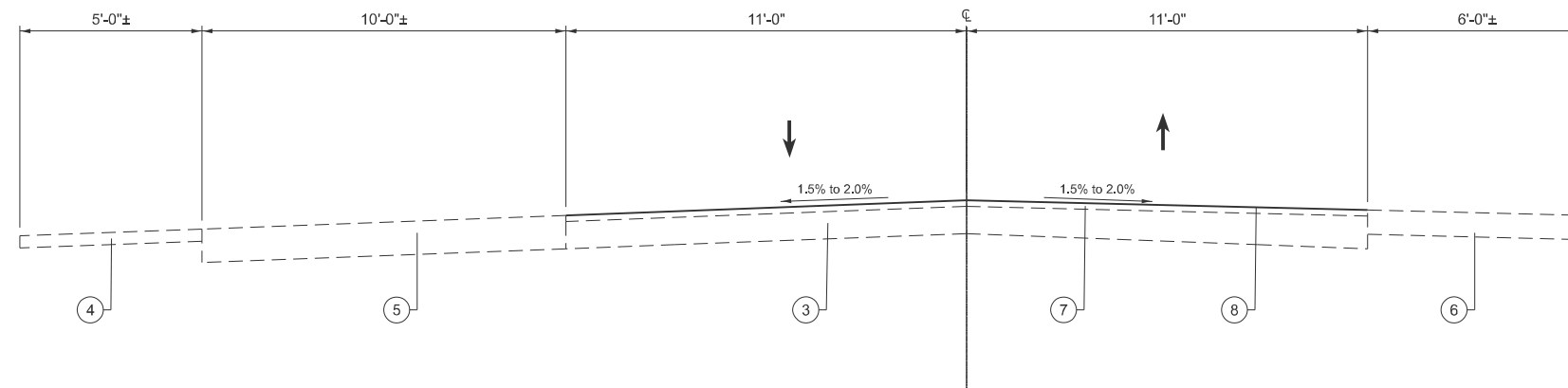
SCALE: SHEET 1 OF 1 SHEETS STA. TO STA.

F.A. RTE.	SECTION	COUNTY	TOTAL SHEETS	SHEET NO.
*	(Q-1)RS-3, (X,F)RS-4	BOND	5	3
*FAU 9826, FAS 1750			CONTRACT NO. 76V21	
ILLINOIS		FED. AID PROJECT		



TYPICAL SECTION

STA. 005+48.00 TO STA. 102+45.05
 BRIDGE OMISSION STA 102+45.05 TO STA 103+04.95
 STA 103+04.95 TO STA 117+19.00
 RAILROAD OMISSION STA 117+19.00 TO STA 117+69.00
 STA 117+69.00 TO STA 255+99.10
 BRIDGE OMISSION STA 255+99.10 TO 256+60.90
 STA 256+60.90 TO STA 375+85.00
 STA 386+68.00 TO STA 418+48.00



TYPICAL SECTION

STA. 375+85.00 TO STA. 386+68.00

LEGEND

- ①- EXISTING AGGREGATE WEDGE SHOULDER, TYPE B
- ②- EXISTING HMA BASE COURSE WIDENING - 9"
- ③- EXISTING CONCRETE PAVEMENT (9"-7"-9")
- ④- EXISTING SIDEWALK
- ⑤- EXISTING PARKING LANE
- ⑥- EXISTING CONCRETE SHOULDER
- ⑦- EXISTING HMA RESURFACING
- ⑧- PROPOSED BITUMINOUS SURFACE TREATMENT, A2 WITH FOG SEAL

MODEL: Typical Sections-3 (Sheet)
 FILE NAME: c:\p\work\pwr\illinois.gov\joshua.huffstutter\illinois.gov\dtd1215151\17\6\21-shr-Typical.s.dgn

USER NAME = joshua.huffstutter	DESIGNED -	REVISED -
	DRAWN -	REVISED -
	CHECKED -	REVISED -
PLOT DATE = 3/19/2026	DATE -	REVISED -

**STATE OF ILLINOIS
 DEPARTMENT OF TRANSPORTATION**

TYPICAL SECTIONS

SCALE: SHEET 1 OF 1 SHEETS STA. TO STA.

F.A. RTE.	SECTION	COUNTY	TOTAL SHEETS	SHEET NO.
*	(Q-1)RS-3, (X,F)RS-4	BOND	5	4
*FAU 9826, FAS 1750		CONTRACT NO. 76V21		
		ILLINOIS	FED. AID PROJECT	

PAVEMENT MARKING SCHEDULE								
LOCATION		PAINT PAVEMENT MARKING			SHORT TERM PAVEMENT MARKING	SHORT TERM PAVEMENT MARKING REMOVAL	RAISED REFLECTIVE PAVEMENT MARKER	RAISED REFLECTIVE PAVEMENT MARKER REMOVAL
STATION		LINE - 6" PAINT					TWO WAY AMBER	
FROM	TO	YELLOW SOLID	SKIP-DASH YELLOW	WHITE SOLID EDGE LINE	FEET	SQ FT	EACH	EACH
		FEET	FEET	FEET				
005+48.0	015+28.0	980	500	1960	104	33	0	0
015+28.0	024+82.0	0	480	1908	101	32	48	48
024+82.0	039+54.0	1472	740	2944	156	49	74	74
039+54.0	047+96.0	1684	0	1684	89	28	42	42
047+96.0	057+96.0	1000	500	2000	106	33	50	50
057+96.0	061+46.0	0	180	700	37	12	18	18
061+46.0	088+73.0	2727	1380	5454	288	91	136	136
088+73.0	101+37.0	0	640	2528	134	42	64	64
101+37.0	102+45.1	108.05	60	216.1	11	4	6	6
103+05.0	117+19.0	2828.1	0	2828.1	149	47	70	70
117+69.0	136+62.0	1893	960	3786	200	63	94	94
136+62.0	151+62.0	0	760	3000	159	50	76	76
151+62.0	174+74.0	2312	1160	4624	244	77	116	116
174+74.0	255+99.1	0	4080	16250.2	859	271	406	406
256+60.9	263+31.0	0	340	1340.2	71	22	34	34
263+31.0	296+51.0	3320	1660	6640	351	111	166	166
296+51.0	325+01.0	0	1440	5700	301	95	142	142
325+01.0	346+29.0	2128	1080	4256	225	71	106	106
346+29.0	408+78.0	0	3140	12498	661	208	312	312
408+78.0	419+48.0	1070	540	2140	113	36	54	54
		0	0	0	0	0	0	0
SUBTOTAL		21522	19640	82457	4358	1375	2014	2014
TOTAL		123619						

RESURFACING SCHEDULE						
STATION		DIMENSION		AREA	BITUMINOUS SURFACE TREATMENT, A2	BITUMINOUS MATERIALS (FOG SEAL)
		LENGTH	WIDTH			
FROM	TO	FEET	FEET	SQ FT	SQ YD	LBS
005+48.00	102+45.05	9697.05	22	213335.1	23703.9	9481.6
102+45.05	103+04.95	SN 003-0055 BRIDGE OMISSION				
103+04.95	117+19.00	1414.05	22	31109.1	3456.6	1382.6
117+19.00	117+69.00	SANTA FE RAILROAD OMISSION				
117+69.00	255+99.10	13830.10	22	304262.2	33806.9	13522.8
255+99.10	256+60.90	SN 003-0052 BRIDGE OMISSION				
256+60.90	419+48.00	16287.10	22	358316.2	39812.9	15925.2
TOTAL					100780	40312

MODEL: Schedules (Sheet)
 FILE NAME: c:\pw\work\roads\illinois\gov\joshua.huffstutter@illinois.gov\1215151\07\6\21\shl-schedule.dgn

USER NAME = joshua.huffstutter	DESIGNED -	REVISED -
	DRAWN -	REVISED -
	CHECKED -	REVISED -
PLOT DATE = 3/19/2026	DATE -	REVISED -

STATE OF ILLINOIS
DEPARTMENT OF TRANSPORTATION

SCHEDULE OF QUANTITIES

SCALE: SHEET 1 OF 1 SHEETS STA. TO STA.

F.A. RTE.	SECTION	COUNTY	TOTAL SHEETS	SHEET NO.
*	(Q-1)RS-3, (X,F)RS-4	BOND	5	5
*FAU 9826, FAS 1750		CONTRACT NO. 76V21		
		ILLINOIS	FED. AID PROJECT	