

STATE OF ILLINOIS  
DEPARTMENT OF TRANSPORTATION

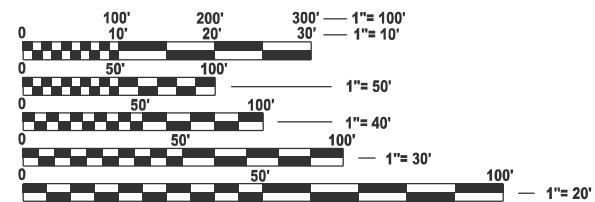
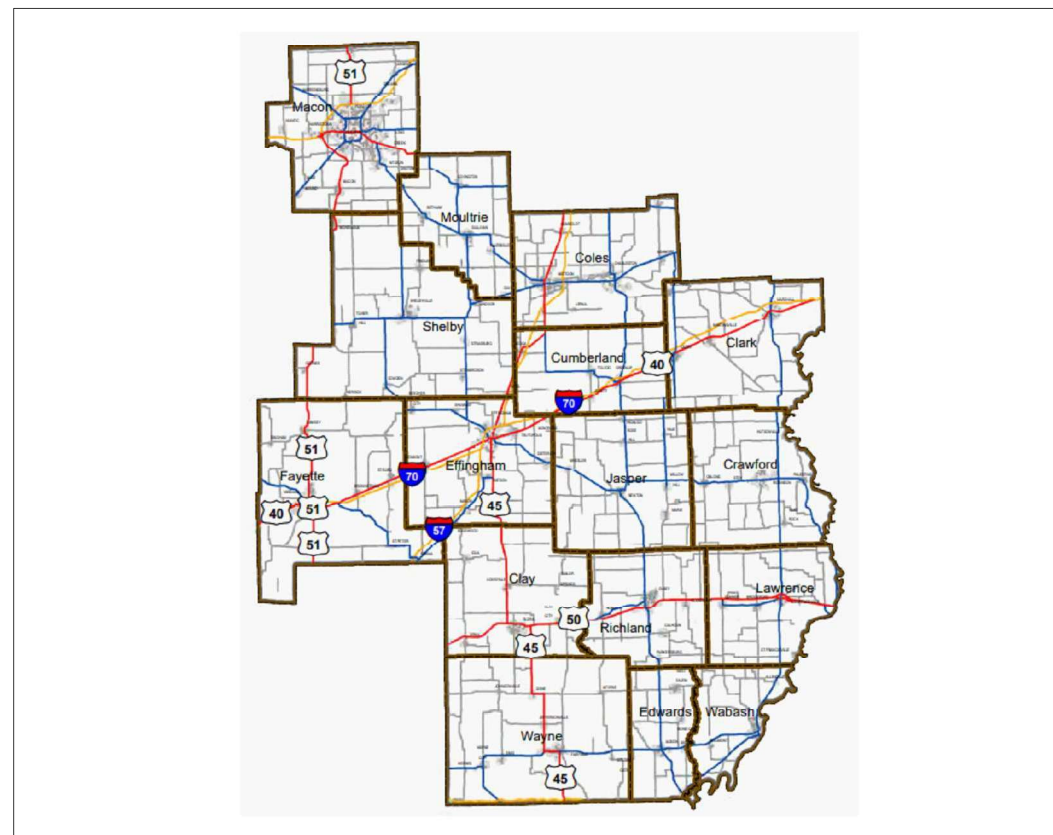
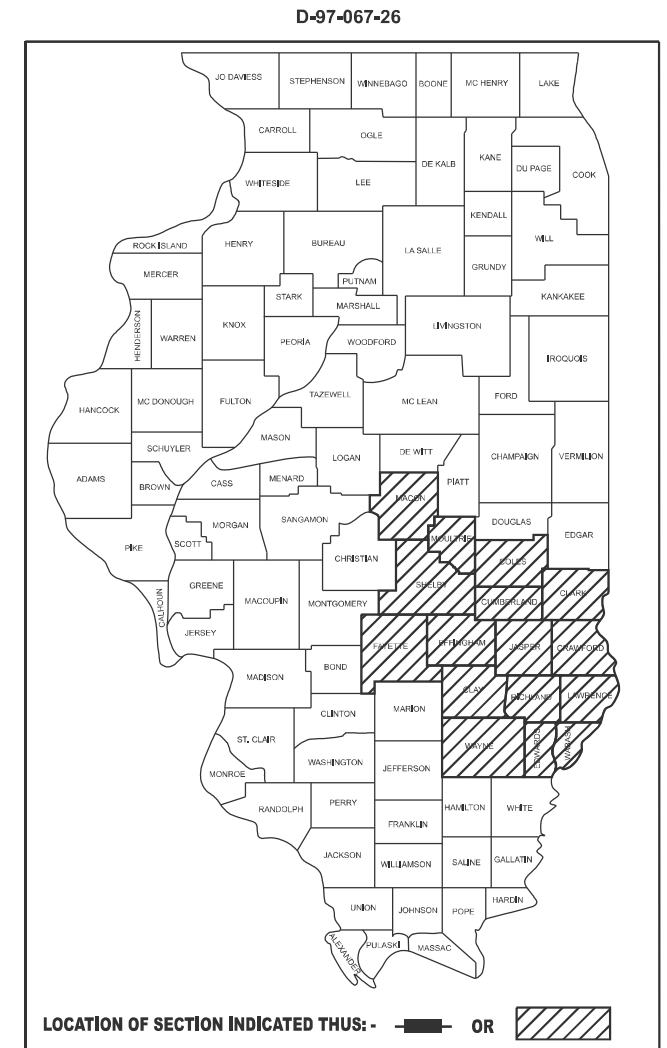
F.A. RTE.	SECTION	COUNTY	TOTAL SHEETS	SHEET NO.
VAR	D7 GUARDRAIL 2027-1	VARIOUS	4	1
		ILLINOIS	CONTRACT NO. 74E44	

FOR INDEX OF SHEETS, SEE SHEET NO. 2

**PROPOSED  
HIGHWAY PLANS**

**VARIOUS ROUTES  
SECTION D7 GUARDRAIL 2027-1  
GUARDRAIL REPAIRS  
VARIOUS COUNTIES**

C-97-082-26



FULL SIZE PLANS HAVE BEEN PREPARED USING STANDARD ENGINEERING SCALES. REDUCED SIZED PLANS WILL NOT CONFORM TO STANDARD SCALES. IN MAKING MEASUREMENTS ON REDUCED PLANS, THE ABOVE SCALES MAY BE USED.

J.U.L.I.E.  
JOINT UTILITY LOCATION INFORMATION FOR EXCAVATION  
1-800-892-0123  
OR 811

PROJECT ENGINEER: KALEB HIRTZEL  
PROJECT MANAGER: KYLE W PRICE (217) 342-8244

CONTRACT NO. 74E44

GROSS LENGTH = N.A.  
NET LENGTH = N.A.

STATE OF ILLINOIS  
DEPARTMENT OF TRANSPORTATION

SUBMITTED May 14, 2026  
Teresa C. Price  
REGIONAL ENGINEER

June 26, 2026  
[Signature]  
ENGINEER OF DESIGN AND ENVIRONMENT

June 26, 2026  
[Signature]  
DIRECTOR OF HIGHWAYS PROJECT IMPLEMENTATION

**PRINTED BY THE AUTHORITY  
OF THE STATE OF ILLINOIS**

## INDEX OF SHEETS

SHEET No.	ITEM
1	COVER SHEET
2	GENERAL NOTES, AND INDEX OF SHEETS
3	SUMMARY OF QUANTITIES
4	EXISTING SAND BARREL DETAIL

## GENERAL NOTES

REMOVED GUARDRAIL THAT IS NOT REPLACED ON THE SAME DAY SHALL BE DELINEATED WITH LIGHTED BARRICADES. NO LOCATIONS SHALL BE LEFT WITHOUT EITHER LIGHTED BARRICADES OR RESTORED GUARDRAIL AT ANYTIME.

THE LIMITS OF DAMAGED GUARDRAIL WILL BE MARKED WITH PAINT. THE REPLACEMENT PARTS AND QUANTITIES INDICATED ARE WITHIN THESE LIMITS AS MARKED.

## TRAFFIC CONTROL STANDARDS

STD. NO.	DESCRIPTION
630001	-13 STEEL PLATE BEAM GUARDRAIL
631011	-10 TRAFFIC BARRIER TERMINAL, TYPE 2
631031	-18 TRAFFIC BARRIER TERMINAL, TYPE 6
631033	-09 TRAFFIC BARRIER TERMINAL, TYPE 6B
636001	-02 CABLE ROAD GUARD SINGLE STRAND
643001	-03 SAND MODULE IMPACT ATTENUATORS
665001	-02 WOVEN WIRE FENCE
701001	-02 OFF-ROAD OPERATIONS, 2L, 2W, MORE THAN 15' (4.5 M) AWAY
701006	-05 OFF-ROAD OPERATIONS, 2L, 2W, 15' (4.5 M) TO 24" (600 MM) FROM PAVEMENT EDGE
701101	-05 OFF-ROAD OPERATIONS, MULTILANE, 15' (4.5 M) TO 24" (600 MM) FROM PAVEMENT EDGE
701106	-02 OFF-ROAD OPERATIONS, MULTILANE, MORE THAN 15' (4.5 M) AWAY
701201	-05 LANE CLOSURE, 2L, 2W, DAY ONLY, FOR SPEEDS > 45 MPH
701301	-04 LANE CLOSURE, 2L, 2W, SHORT TIME OPERATIONS
701426	-09 LANE CLOSURE, MULTILANE, INTERMITTENT OR MOVING OPERATION, FOR SPEEDS > 45 MPH
701501	-06 URBAN LANE CLOSURE, 2L, 2W, UNDIVIDED
701601	-09 URBAN LANE CLOSURE, MULTILANE, 1W OR 2W, WITH NONTRAVERSABLE MEDIAN
701901	-11 TRAFFIC CONTROL DEVICES
725001	-01 OBJECT AND TERMINAL MARKERS
782006	-01 GUARDRAIL AND BARRIER WALL REFLECTOR MOUNTING DETAILS

MODEL: GEN NOTES (Sheet)  
FILE NAME: c:\p\work\project\kyle.price@illinois.gov\1218560\074E44-sht-gennotes.dgn

	USER NAME = kyle.price	DESIGNED -	REVISED -	<b>STATE OF ILLINOIS DEPARTMENT OF TRANSPORTATION</b>	<b>GENERAL NOTES, AND INDEX OF SHEETS</b>	F.A. RTE.	SECTION	COUNTY	TOTAL SHEETS	SHEET NO.
		DRAWN -	REVISED -			VAR	D7 GUARDRAIL 2027-1	VARIOUS	4	2
		CHECKED -	REVISED -			CONTRACT NO. 74E44				
	PLOT DATE = 5/12/2026	DATE -	REVISED -		SCALE:	SHEET GEN NOTES	SHEETS	STA.	TO STA.	ILLINOIS   FED. AID PROJECT

100% STATE

CODE NO.	ITEM	UNIT	TOTAL QUANTITY	CONSTR. CODE	
				MCHD	STATE
				SAFETY 0021	SAFETY 0021
63100045	TRAFFIC BARRIER TERMINAL, TYPE 2	EACH	2	1	1
63100070	TRAFFIC BARRIER TERMINAL, TYPE 5	EACH	2	1	1
63100085	TRAFFIC BARRIER TERMINAL, TYPE 6	EACH	2	1	1
63100167	TRAFFIC BARRIER TERMINAL, TYPE 1 (SPECIAL) TANGENT	EACH	45	23	22
63100169	TRAFFIC BARRIER TERMINAL, TYPE 1 (SPECIAL) FLARED	EACH	2	1	1
63600105	CABLE ROAD GUARD, SINGLE STRAND	FOOT	80	40	40
66500105	WOVEN WIRE FENCE, 4'	FOOT	150	75	75
67100100	MOBILIZATION	L SUM	1	0.5	0.5
72501000	TERMINAL MARKER - DIRECT APPLIED	EACH	50	25	25
78200005	GUARDRAIL REFLECTORS, TYPE A	EACH	16	8	8
X6300210	GUARDRAIL BLOCKS	EACH	1100	550	550
X6300215	RAIL ELEMENT PLATES	EACH	395	200	195
X6300217	RAIL ELEMENT PLATES (RADIUS)	EACH	13	7	6
X6300220	EXTRUDER HEAD	EACH	2	1	1

100% STATE

CODE NO.	ITEM	UNIT	TOTAL QUANTITY	CONSTR. CODE	
				MCHD	STATE
				SAFETY 0021	SAFETY 0021
X6300225	SINGLE END SECTION	EACH	2	1	1
X6300231	STEEL POST, ATTACHED TO STRUCTURES	EACH	6	3	3
X6300236	STEEL POSTS 6'	EACH	800	400	400
X6300239	STEEL POSTS 9'	EACH	65	33	32
X6310302	REPAIR TRAFFIC BARRIER TERMINAL, TYPE 1 SPECIAL (TANGENT)	EACH	3	2	1
X6310304	REPAIR TRAFFIC BARRIER TERMINAL, TYPE 1 SPECIAL (FLARED)	EACH	2	1	1
X6310306	REPAIR TRAFFIC BARRIER TERMINAL, TYPE 1 SPECIAL - POST	EACH	3	2	1
X6310310	REPAIR TRAFFIC BARRIER TERMINAL TYPE 1 SPECIAL - RAIL ELEMENT PLATE	EACH	2	1	1
X6310316	REPAIR TRAFFIC BARRIER TERMINAL, TYPE 2	EACH	3	2	1
X6310330	REPAIR TRAFFIC BARRIER TERMINAL, TYPE 6	EACH	3	2	1
X6310334	REPAIR TRAFFIC BARRIER TERMINAL, TYPE 6B	EACH	3	2	1
X6431220	REMOVE AND REPLACE IMPACT ATTENUATOR SAND MODULE	EACH	50	25	25
Z0008760	EMERGENCY WORK CALL OUT	EACH	2	1	1

MODEL: SOQ (Sheet)  
 FILE NAME: c:\pwworking\kyle.price@illinois.gov\d1218560\0774E44-shr-SOQ.dgn

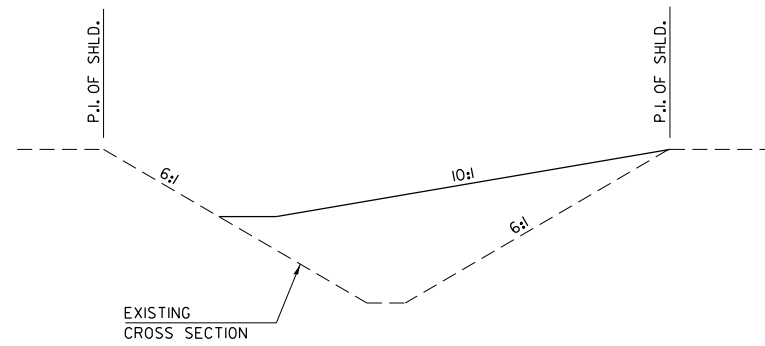
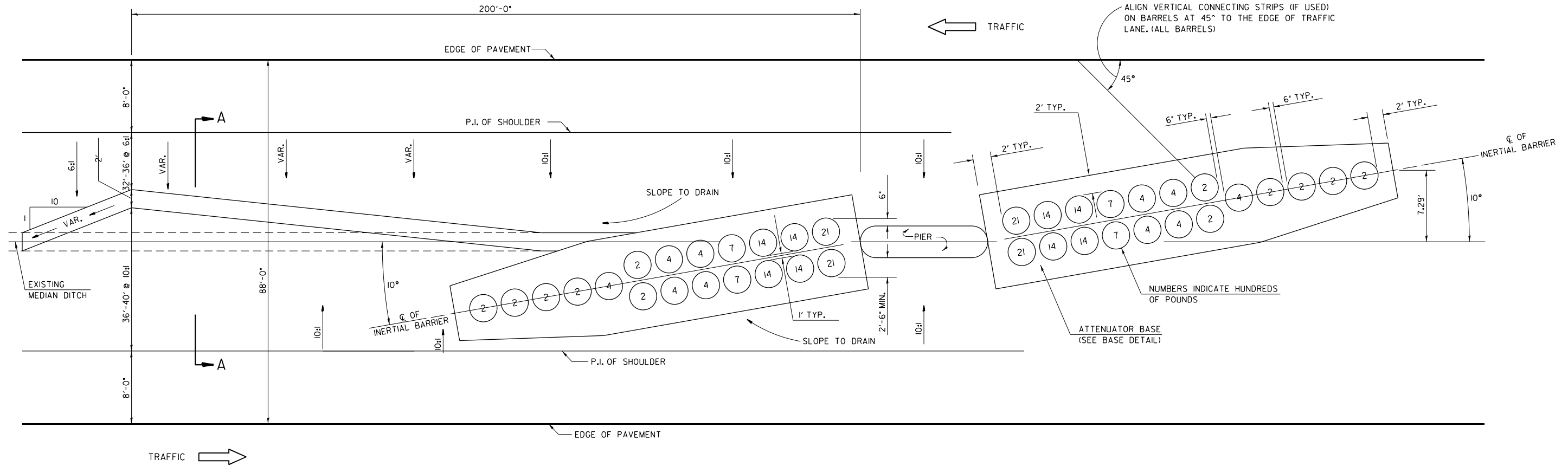
USER NAME = kyle.price	DESIGNED -	REVISED -
	DRAWN -	REVISED -
	CHECKED -	REVISED -
PLOT DATE = 5/13/2026	DATE -	REVISED -

**STATE OF ILLINOIS  
DEPARTMENT OF TRANSPORTATION**

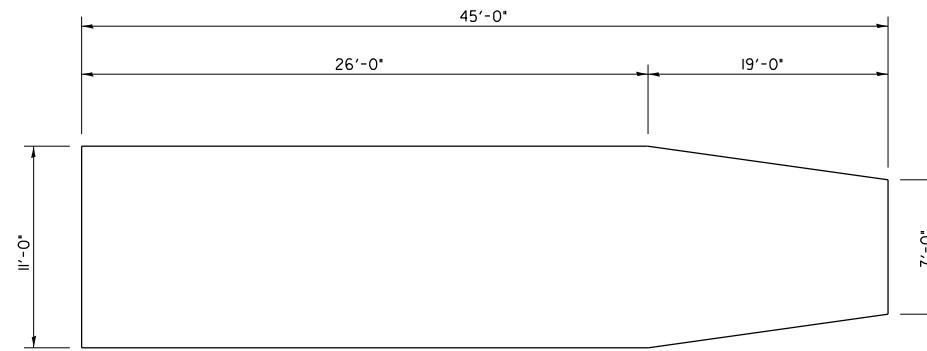
**SUMMARY OF QUANTITIES**

SCALE: SHEET SOQ OF SHEETS STA. TO STA.

F.A. RTE.	SECTION	COUNTY	TOTAL SHEETS	SHEET NO.
VAR	D7 GUARDRAIL 2027-1	VARIOUS	4	3
CONTRACT NO. 74E44				
ILLINOIS FED. AID PROJECT				



SECTION A-A  
GRADING AND SHAPING DETAIL



BASE DETAIL

GENERAL NOTES

1. ALL 10:1 SLOPES SHOWN ON THIS DETAIL SHALL BE CONSTRUCTED 10:1 OR FLATTER.
2. THE SLOPES AS SHOWN ON THIS DETAIL SHALL APPLY TO BOTH ENDS OF THE BRIDGE PIERS.
3. THE LENGTH X WIDTH OF MODULE LAYOUT IS 41.0' x 7.0' : 19 MODULES - 14,400 LBS.
4. IN AREAS OF 10:1 SLOPES PRECEDING THE ATTENUATOR IN THE MEDIAN INSTALLATION, FOUR OR MORE WOOD POSTS SHALL BE PLACED AT 5' INTERVALS IN THE MEDIAN  $\phi$ ; SEE SPECIAL PROVISIONS AND SCHEDULES.

**NOTE:**  
THIS SHEET APPLIES ONLY WHEN MAKING PARTIAL REPAIR OF AN EXISTING SAND BARREL ARRAY THAT WAS INSTALLED ACCORDING TO THIS DRAWING.  
USE STANDARD 643001 FOR A COMPLETE REPLACEMENT.

NOT TO SCALE  
Note: All dimensions are in INCHES (millimeters) unless otherwise shown.

MODEL: DETAIL-1 [Sheet]  
FILE NAME: c:\p\work\kyle\price\illinois\pvd1218560\074E44-shd-details.dgn

USER NAME = kyle.price	DESIGNED -	REVISED -
	DRAWN -	REVISED -
	CHECKED -	REVISED -
PLOT DATE = 4/8/2026	DATE -	REVISED -

STATE OF ILLINOIS  
DEPARTMENT OF TRANSPORTATION

EXISTING SAND BARREL  
DETAIL

SCALE: SHEET DETAIL-10F SHEETS STA. TO STA.

F.A. RTE.	SECTION	COUNTY	TOTAL SHEETS	SHEET NO.
VAR	D7 GUARDRAIL 2027-1	VARIOUS	4	4
CONTRACT NO. 74E44				
ILLINOIS FED. AID PROJECT				