

**INDEX OF SHEETS**

- 1 - TITLE SHEET
- 2-3 - SUMMARY OF QUANTITIES
- 4 - TYPICAL ROADWAY SECTIONS & GENERAL NOTES
- 5 - SCHEDULES
- 6 - ROADWAY PLAN AND PROFILE
- 7 - GENERAL PLAN & ELEVATION
- 8 - GENERAL DATA
- 9 - COFFERDAM DETAILS
- 10-13 - SUPERSTRUCTURE
- 14-15 - TYPE S1 RAILING
- 16 - ABUTMENTS
- 17 - PIERS
- 18 - PILE DETAILS
- 19-20 - BORINGS
- 21-28 - ROADWAY CROSS SECTIONS

**STANDARDS (IN PROPOSAL)**

- STANDARD 000001-09
- STANDARD 515001-04
- STANDARD 601101-02
- STANDARD 701901-11
- STANDARD BLR 21-9

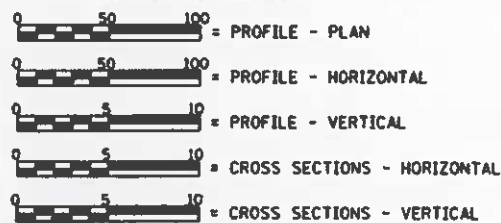
**LIST OF UTILITIES**

FRONTIER COMMUNICATIONS  
225 NORTH BROAD STREET  
CARLINVILLE, ILLINOIS 62626  
CONTACT: KALIN HINSHAW  
815-895-1515

MADISON TELEPHONE COMPANY  
315 EAST MAIN STREET  
STAUNTON, ILLINOIS 62088  
CONTACT: STEVEN SCHWARTZ  
618-635-5000

HENDERSON WATER DISTRICT  
1004 STATE HIGHWAY 16  
JERSEYVILLE, ILLINOIS 62052  
CONTACT: RONNIE PAUL  
618-498-6418

**SCALE IN FEET**

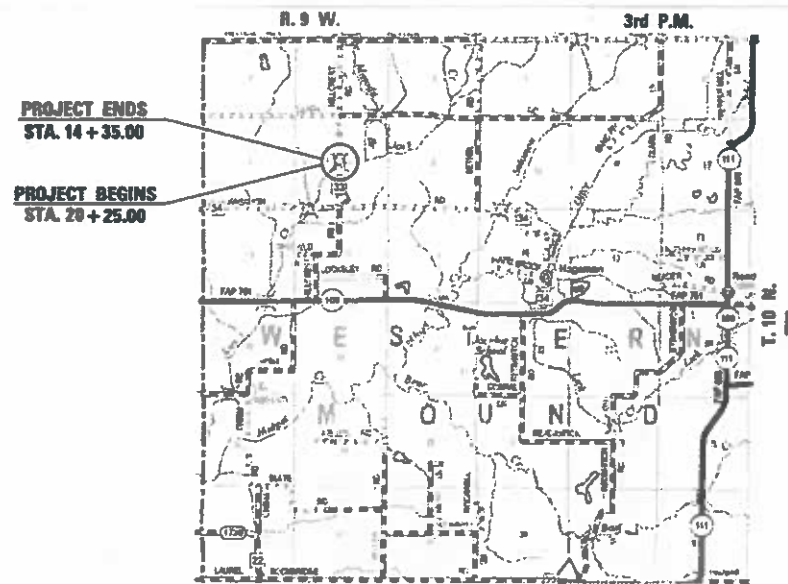


LAND SECTION - 8  
 LAND QUARTER SECTION - N.W.  
 FUNCTIONAL CLASSIFICATION: LOCAL ROAD (NON-URBAN)  
 A.D.T. - 20 (2024)  
 A.D.T. - 20 (2044)  
 30 M.P.H. DESIGN SPEED

TOLL FREE  
 "JOINT UTILITY LOCATION INFORMATION FOR EXCAVATORS"  
 (LULL I.E.) TELEPHONE NUMBER  
 1-800-892-0123 (811)

**STATE OF ILLINOIS**  
**DEPARTMENT OF TRANSPORTATION**  
**PLANS FOR PROPOSED**  
**LOCAL BRIDGE**  
**FORMULA PROGRAM**

**C.H. 33 OVER JOE'S CREEK**  
**SECTION 24-00109-00-BR**  
**PROJECT NO. CLZ9(161)**  
**MACOUPIN COUNTY**  
**JOB NO. C-96-076-25**



**EXISTING STRUCTURE:** SINGLE SPAN REINFORCED CONCRETE SLAB STRUCTURE ON REINFORCED CLOSED CONCRETE ABUTMENTS ON REINFORCED CONCRETE FOOTINGS FOUNDED ON TIMBER PILING. ±43'-0" BK.-BK. ABUTS. ±16'-0" CLEAR WIDTH BETWEEN CONCRETE BRIDGE RAIL, 19'-4" OUT. - OUT. DECK WIDTH NO SKEW EXIST. SN 059-3034.

**PROPOSED STRUCTURE:** THREE SPAN PRECAST PRESTRESSED CONCRETE DECK BEAM STRUCTURE (17') ON OPEN CONCRETE ABUTMENTS AND PILE BENT PIERS BEARING ON STEEL PILING. 97'-0" BK.-BK. ABUTMENTS, 24'-0" CLEAR DECK WIDTH WITH TYPE S1 RAILING, NO SKEW. PROP. SN 059-3334.

STATE OF ILLINOIS  
 DEPARTMENT OF TRANSPORTATION  
 DIVISION OF HIGHWAYS

APPROVED *2-11-26*  
*Thomas A. Reynolds*  
 COUNTY ENGINEER

PASSED *February 20, 2026*  
*Travis C. Fickel*  
 DISTRICT SIX ENGINEER OF  
 LOCAL ROADS & STREETS

Submitting For  
 State Seal to  
 United States *February 20, 2026*  
*Travis C. Fickel*  
 REGION FOUR ENGINEER



*Christopher P. Kollman 2/12/26*  
 EXPIRATION: 11/30/2027

**PRINTED BY THE AUTHORITY  
 OF THE STATE OF ILLINOIS**

USER NAME = Ckollm	DESIGNED -	REVISED -
PLOT SCALE = 2.0000' / in.	DRAWN -	REVISED -
PLOT DATE = 2/12/2026	CHECKED -	REVISED -
	DATE -	REVISED -



**TITLE SHEET**

SCALE: NONE SHEET 1 OF 1 SHEETS STA. TO STA.

C.H. RTE.	SECTION	COUNTY	TOTAL SHEETS	SHEET NO.
33	24-00109-00-BR	MACOUPIN	28	1
STR. NO.	CONTRACT NO. 93856			
ILLINOIS FED. AID PROJECT				

MODEL: C:\pwr\... V and K Jobs\316 Cl. 33 over Joe's Creek\000 - Sheet\316-0123.dwg  
 PLOT NAME: V:\pwr\...

MODEL: D:\p\h  
 FILE NAME: V:\Sporringfield\Z0\_V and X\_1005316\_CH\_33\_over\_Joe's\_Creek\CADD\_Sheets\316-CH-33.dgn

CODE NO.	ITEM	UNIT	TOTAL QUANTITY	CONSTRUCTION CODE	
				ROADWAY	BRIDGE
				0004	0010
				059-3334	059-3334
20100500	TREE REMOVAL, ACRES	ACRE	0.1	0.1	
20200100	EARTH EXCAVATION	CU YD	130	130	
20300100	CHANNEL EXCAVATION	CU YD	520	520	
20400800	FURNISHED EXCAVATION	CU YD	162	162	
20700110	POROUS GRANULAR EMBANKMENT	TON	85	85	
28100807	STONE DUMPED RIPRAP, CLASS A4	TON	314	314	
40200800	AGGREGATE SURFACE COURSE, TYPE B	TON	449	449	
50100100	REMOVAL OF EXISTING STRUCTURES	EACH	1		1
50200100	STRUCTURE EXCAVATION	CU YD	52		52
50200300	COFFERDAM EXCAVATION	CU YD	136		136
50201101	COFFERDAM (TYPE 1) (LOCATION - 1)	EACH	1		1
50201102	COFFERDAM (TYPE 1) (LOCATION - 2)	EACH	1		1
50300225	CONCRETE STRUCTURES	CU YD	88.8		88.8
50300280	CONCRETE ENCASEMENT	CU YD	2.8		2.8
50400305	PRECAST PRESTRESSED CONCRETE DECK BEAMS (17" DEPTH)	SQ FT	2292		2292

\* SPECIALTY ITEM

USER NAME = CKohlrus	DESIGNED - _____	REVISED - _____
	DRAWN - _____	REVISED - _____
PLOT SCALE = 2.0000' / in.	CHECKED - _____	REVISED - _____
PLOT DATE = 1/13/2026	DATE - _____	REVISED - _____



**SUMMARY OF QUANTITIES**

SCALE: NONE SHEET 1 OF 2 SHEETS STA. \_\_\_\_\_ TO STA. \_\_\_\_\_

C.H. RTE.	SECTION	COUNTY	TOTAL SHEETS	SHEET NO.
33	24-00109-00-BR	MACOUPIN	28	2
			CONTRACT NO. 93856	
		ILLINOIS	FED. AID PROJECT	

MODEL: Default  
 FILE NAME: V:\Springfield-ZO V and L Jobs\5316 CH 33 over Job's Creek\CADD\_Sheets\5316-sht-309.dgn

CODE NO.	ITEM	UNIT	TOTAL QUANTITY	CONSTRUCTION CODE	
				ROADWAY	BRIDGE
				0004	0010
				059-3334	059-3334
50800105	REINFORCEMENT BARS	POUND	7690		7690
* 50900205	STEEL RAILING, TYPE S1	FOOT	194		194
51201400	FURNISHING STEEL PILES HP10X42	FOOT	832		832
51202305	DRIVING PILES	FOOT	832		832
51203400	TEST PILE STEEL HP10X42	EACH	2		2
51204650	PILE SHOES	EACH	18		18
51500100	NAME PLATES	EACH	1		1
60100060	CONCRETE HEADWALLS FOR PIPE DRAINS	EACH	4		4
60146304	PIPE UNDERDRAINS FOR STRUCTURES 4"	FOOT	96		96
66600105	FURNISHING AND ERECTING RIGHT OF WAY MARKERS	EACH	5	5	
67100100	MOBILIZATION	L SUM	1	1	
* 72501000	TERMINAL MARKER - DIRECT APPLIED	EACH	4	4	
X2501000	SEEDING, CLASS 2 (SPECIAL)	ACRE	0.5	0.5	
X6640104	FENCE REMOVAL	FOOT	123	123	
X7011800	TRAFFIC CONTROL AND PROTECTION, STANDARD BLR 21	L SUM	1	1	
Z0013798	CONSTRUCTION LAYOUT	L SUM	1	1	

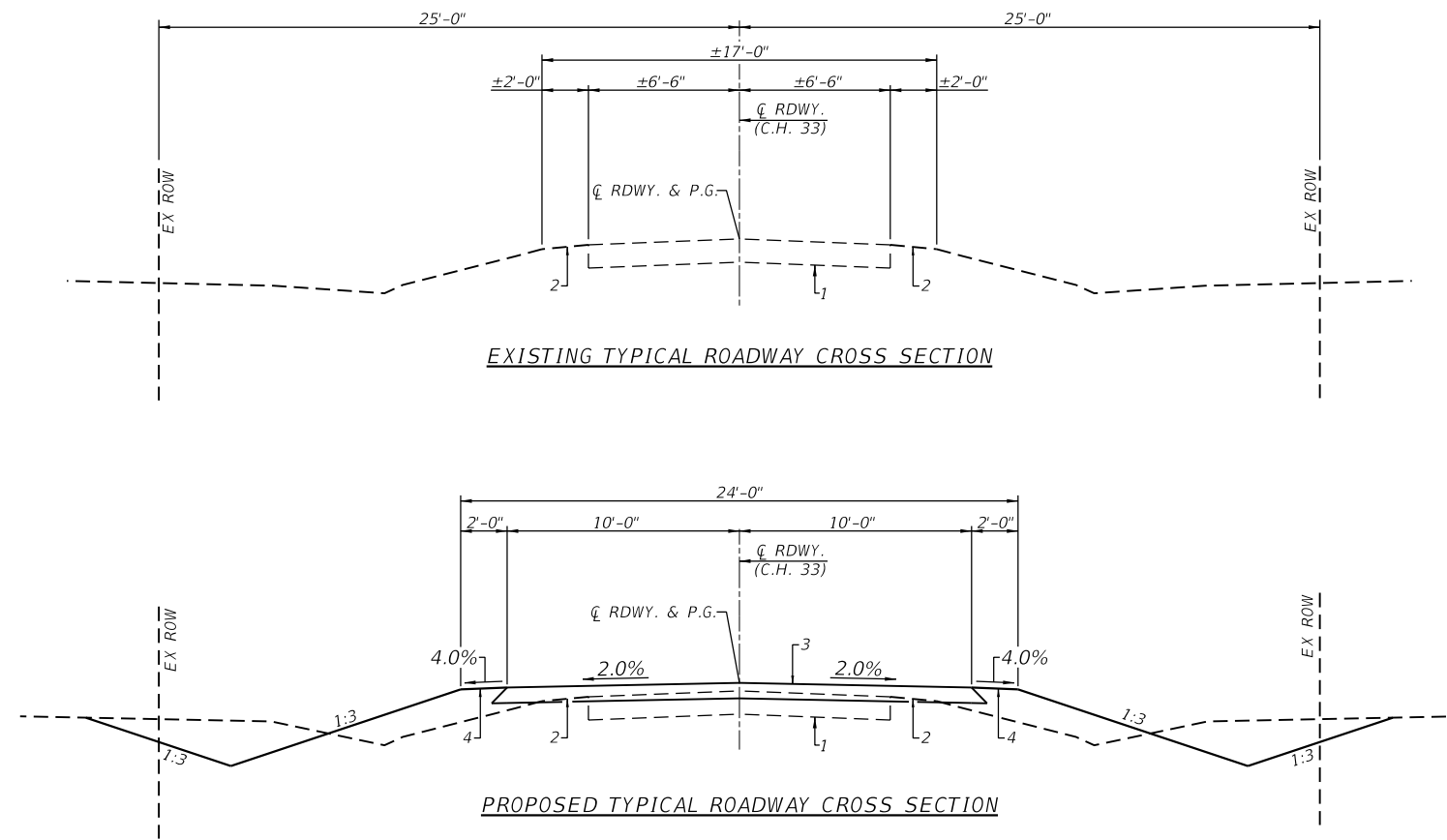
\* SPECIALTY ITEM

USER NAME = CKohlrus	DESIGNED - _____	REVISED - _____
	DRAWN - _____	REVISED - _____
PLOT SCALE = 2.0000' / in.	CHECKED - _____	REVISED - _____
PLOT DATE = 1/13/2026	DATE - _____	REVISED - _____

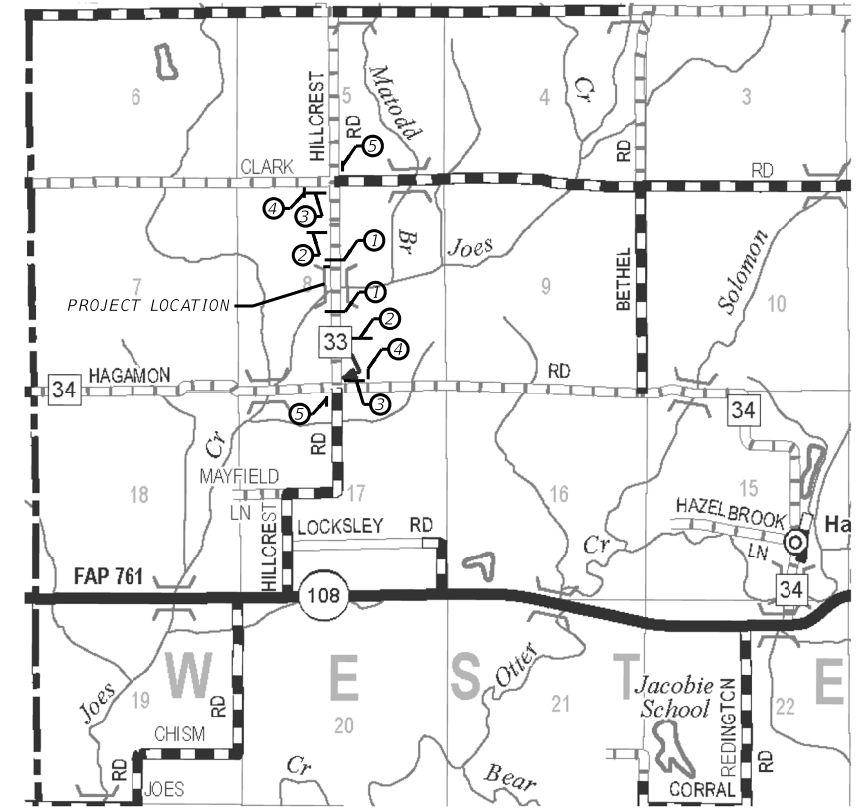


SUMMARY OF QUANTITIES			
SCALE: NONE	SHEET 2	OF 2 SHEETS	STA. _____ TO STA. _____

C.H. RTE.	SECTION	COUNTY	TOTAL SHEETS	SHEET NO.
33	24-00109-00-BR	MACOUPIN	28	3
			CONTRACT NO. 93856	
ILLINOIS FED. AID PROJECT				



- LEGEND**
- 1 - EXIST. AGG. BASE WITH OIL AND CHIP SURFACE
  - 2 - EXIST. EARTH/AGG. SHOULDER
  - 3 - PROP. AGGREGATE SURFACE COURSE TYPE B 8"
  - 4 - PROP. EARTH SHOULDER



- LEGEND**
- ① TYPE III BARRICADE WITH "ROAD CLOSED" R-32-2-4880
  - ② ROAD CLOSED 500 FT
  - ③ ROAD CLOSED 0.5 MILE AHEAD
  - ④ ROAD CLOSED 0.5 MILE AHEAD WITH W1-6R
  - ⑤ ROAD CLOSED 0.5 MILE AHEAD WITH W1-6L

**GENERAL NOTES**

WHERE SECTION OR SUBSECTION STONES ARE ENCOUNTERED, THE ENGINEER SHALL BE NOTIFIED BEFORE SUCH STONES ARE REMOVED. THE CONTRACTOR SHALL PROTECT AND PRESERVE ALL PROPERTY MARKERS AND MONUMENTS UNTIL THE OWNER, AUTHORIZED SURVEYOR, OR AGENT HAS WITNESSED OR REFERENCED THEIR LOCATION.

SEEDING: FERTILIZER NUTRIENTS SHALL BE APPLIED AT A RATIO OF 1:1:1 AND AT A RATE OF 90 POUNDS PER ACRE FOR EACH NUTRIENT.

MULCH SHALL BE APPLIED AT THE RATE OF 2 TONS PER ACRE. AREAS TO BE SEEDED SHALL CONSIST OF ALL DISTURBED EARTH SURFACES WITHIN THE RIGHT OF WAY AS DIRECTED BY THE ENGINEER. ALL DISTURBED EARTH SURFACES BEYOND ROW IS THE RESPONSIBILITY OF AND COST TO THE CONTRACTOR.

PER NATURAL RESOURCES REVIEW DATED MAY 3, 2022, THERE IS A POTENTIAL FOR IMPACTS TO THE IBAT AND NLEB, AND THEREFORE THE FOLLOWING ACTIONS SHALL BE INCORPORATED:

- TO ENSURE NO EFFECT TO EITHER SPECIES OF BAT, THE PROJECT PROPONENT SHALL CONDUCT A FINAL INSPECTION OF THE BRIDGE NO MORE THAN 7 DAYS PRIOR TO THE START OF CONSTRUCTION ACTIVITY FOR WORK THAT IS SCHEDULED DURING THE SPECIES ACTIVE SEASON, FROM APRIL 1 THROUGH SEPTEMBER 30.
- TREES THREE (3) INCHES IN DIAMETER AND AT BREAST HEIGHT WILL NOT BE CLEARED FROM APRIL 1 THROUGH SEPTEMBER 30.

THE FOLLOWING RATES OF APPLICATION HAVE BEEN USED TO CALCULATE THE PLAN QUANTITIES.

AGGREGATE MATERIAL	1.9 TON/CU. YD.
RIPRAP	1.5 TON/CU. YD.
NITROGEN FERTILIZER NUTRIENT	90 LBS./ACRE
PHOSPHORUS FERTILIZER NUTRIENT	90 LBS./ACRE
POTASSIUM FERTILIZER NUTRIENT	90 LBS./ACRE

MODEL: Default  
 FILE: I:\Users\jacob.kobus@veestra.com\Projects\2024\10\13\2026\10132026\10132026.dgn

USER NAME = CKofirus	DESIGNED -	REVISED -
	DRAWN -	REVISED -
PLOT SCALE = 8.0024' / in.	CHECKED -	REVISED -
PLOT DATE = 1/13/2026	DATE -	REVISED -



TYPICAL ROADWAY SECTIONS & GENERAL NOTES			
SCALE:	SHEET 1 OF 1 SHEETS	STA.	TO STA.

C.H. RTE.	SECTION	COUNTY	TOTAL SHEETS	SHEET NO.
33	24-00109-00-BR	MACOUPIN	28	4
CONTRACT NO. 93856				
ILLINOIS FED. AID PROJECT				

EARTHWORK SCHEDULE

LOCATION	EARTH EXCAVATION	EARTH EXCAVATION ADJUSTED FOR SHRINKAGE	EMBANKMENT	EARTHWORK BALANCE WASTE (+) OR SHORTAGE (-)
	CU. YD.	CU. YD.	CU. YD.	CU. YD.
STA. 14+35 TO STA. 16+68	23	17	235	218
BRIDGE OMISSION - STA. 16+68 TO STA. 17+65				
STA. 17+65 TO STA. 20+25	107	80	336	256
TOTAL	130	97	571	*162

\* THIS NUMBER HAS BEEN REDUCED BY 312 CUBIC YARDS OF SUITABLE CHANNEL AND STRUCTURE EXCAVATION.

TREE REMOVAL, ACRES

LOCATION	QUANTITY (ACRES)
STA. 17+40 TO STA. 20+25 19' RT. TO 55' RT.	0.06
STA. 17+40 TO STA. 20+25 16' LT. TO 25' LT.	0.01
TOTAL	0.07

USE 0.1 ACRE

AGGREGATE SURFACE COURSE, TYPE B

LOCATION	AGGREGATE SURFACE COURSE, TYPE B
	TON
STA. 14+35 TO STA. 16+68	212
STA. 17+65 TO STA. 20+25	237
TOTAL	449

FURNISHING AND ERECTING ROW MARKERS

LOCATION	FURNISH & ERECT ROW MARKERS
	EACH
STA. 17+25, 22.5' RT	1
STA. 17+25, 55' RT	1
STA. 17+75, 55' RT	1
STA. 18+60, 22.5' RT	1
STA. 18+60, 55' RT	1
TOTAL	5

FENCE REMOVAL

LOCATION	FENCE REMOVAL
	FOOT
STA. 19+02 TO STA. 20+25 LT.	123
TOTAL	123

TERMINAL MARKER - DIRECT APPLIED

LOCATION	TERMINAL MARKER - DIRECT APPLIED
	EACH
STA. 16+68 LT.	1
STA. 16+68 RT.	1
STA. 17+65 LT.	1
STA. 17+65 RT.	1
TOTAL	4

SEEDING, CLASS 2 (SPECIAL) SCHEDULE

LOCATION	SEEDING, CLASS 2 (SPECIAL)
	ACRE
STA. 14+35 TO STA. 16+70.5 LT.	0.09
STA. 14+35 TO STA. 16+70.5 RT.	0.09
STA. 17+62.5 TO STA. 20+25 LT.	0.09
STA. 17+62.5 TO STA. 20+25 RT.	0.18
TOTAL	0.45

USE 0.50 ACRE

MODEL: D:\p\h\... FILE NAME: V:\Sporfield\Z0\_V and X\_105\5316\_CH 33 over Joe's Creek\CADD\_Sheets\5316-11-schedule.dgn

USER NAME = MFlaush	DESIGNED -	REVISED -
PLOT SCALE = 2.0000' / in.	DRAWN -	REVISED -
PLOT DATE = 12/4/2025	CHECKED -	REVISED -
	DATE -	REVISED -



<b>QUANTITY SCHEDULES</b>			
SCALE: NONE	SHEET 1	OF 1 SHEETS	STA. TO STA.

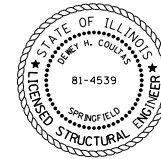
C.H. RTE.	SECTION	COUNTY	TOTAL SHEETS	SHEET NO.
33	24-00109-00-BR	MACOUPIN	28	5
ILLINOIS FED. AID PROJECT			CONTRACT NO. 93856	



Benchmark: BM A - Chiseled □ on west wingwall of north abutment. Elev. 518.63

Existing Structure: Structure number 059-3034, built in 1918 at Station 17+16.50. The existing structure is a single span bridge having a back-to-back abutment length of 43'-0" and a face-to-face of concrete bridge rail width of 16'-0" and an out-to-out deck width of 19'-4". The superstructure consists of a reinforced concrete slab. The substructure consists of reinforced concrete closed abutments supported by reinforced concrete spread footings supported by timber piles.

No Salvage.

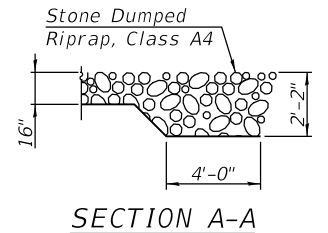
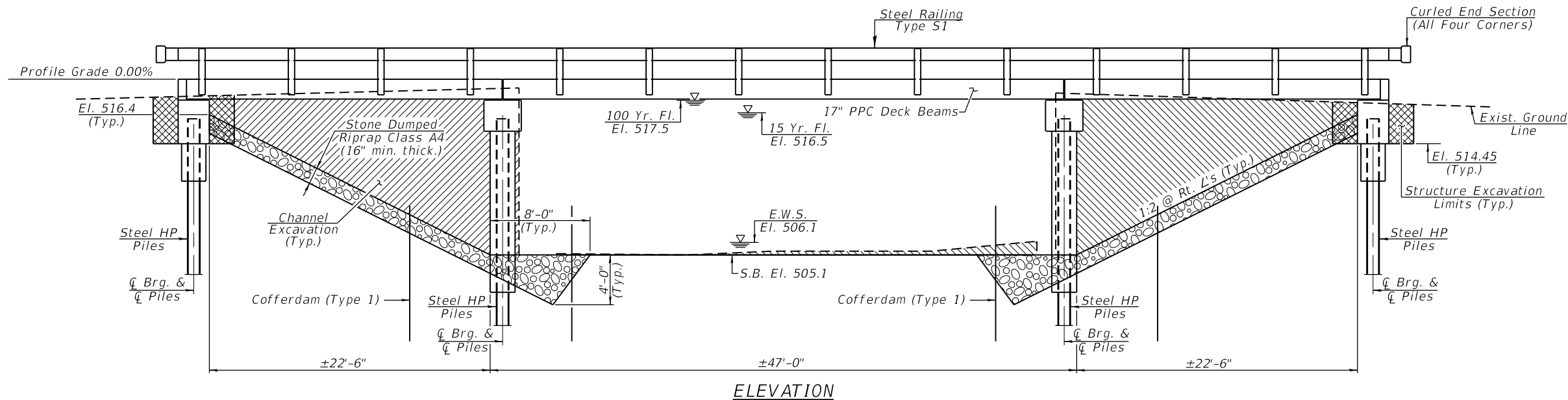


I certify that to the best of my knowledge, information and belief, this bridge design is structurally adequate for the design loading shown on the plans. The design is an economical one for the style of structure and complies with requirements of the current "A.A.S.H.T.O. LRFD. Bridge Design Specifications".

*Dewey H. Coultas* 2/12/26  
Expiration Date 11/30/2026

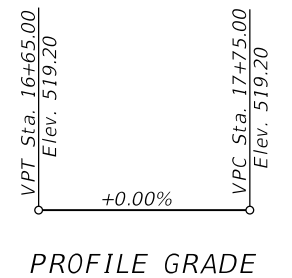
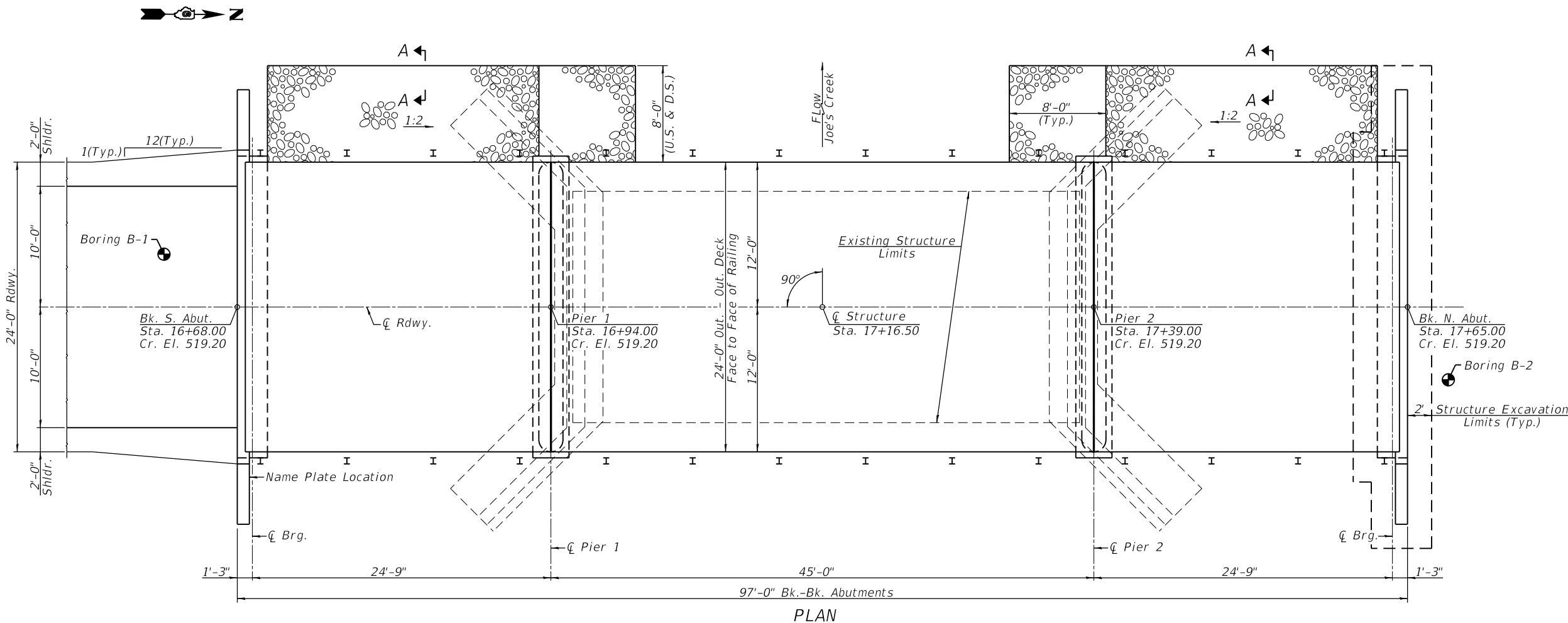
**INDEX OF SHEETS**

- 1 - General Plan & Elevation
- 2 - General Data
- 3 - Cofferdam Details
- 4-5 - 17"x36" PPC Deck Beam (Spans 1 & 3)
- 6-7 - 17"x36" PPC Deck Beam (Span 2)
- 8-9 - Steel Railing, Type S1
- 10 - Abutments
- 11 - Piers
- 12 - HP Pile Details
- 13-14 - Boring Logs

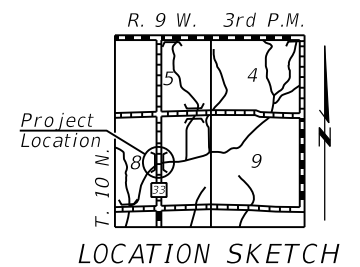


JOE'S CREEK  
BUILT 20 BY  
MACOUPIN COUNTY  
SECTION 24-00109-00-BR  
STA. 17+16.50  
STR. NO. 059-3334 LOADING HL93

**NAME PLATE**  
(Standard 515001)



**PROFILE GRADE**



**GENERAL PLAN & ELEVATION**  
**C.H. 33 OVER JOE'S CREEK**  
**SECTION 24-00109-00-BR**  
**MACOUPIN COUNTY**  
**STRUCTURE NO. 059-3334**

MODEL: 001  
FILE NAME: \\S:\proj\fields\20 V and K. I\0593334 CH 33 over Joe's Creek\CADD\_Sheets\316-Structures.dwg

USER NAME = MFiaush	DESIGNED -	REVISED -
PLOT SCALE = 10.0000' / in.	DRAWN -	REVISED -
PLOT DATE = 12/4/2025	CHECKED -	REVISED -
	DATE -	REVISED -

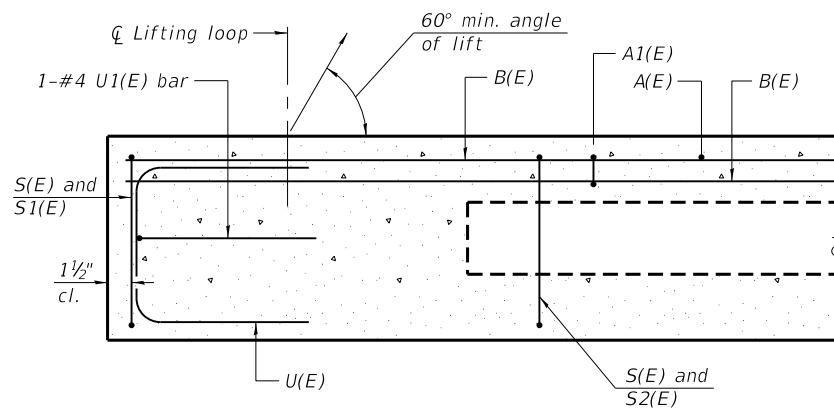


<b>GENERAL PLAN &amp; ELEVATION</b>			
<b>STRUCTURE NO. 059-3334</b>			
SCALE: NONE	SHEET 1	OF 14 SHEETS	STA. TO STA.

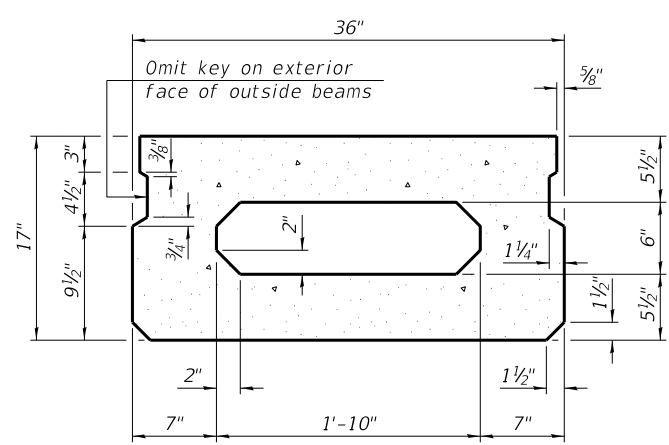
C.H. RTE.	SECTION	COUNTY	TOTAL SHEETS	SHEET NO.
33	24-00109-00-BR	MACOUPIN	28	7
CONTRACT NO. 93856				
ILLINOIS FED. AID PROJECT				



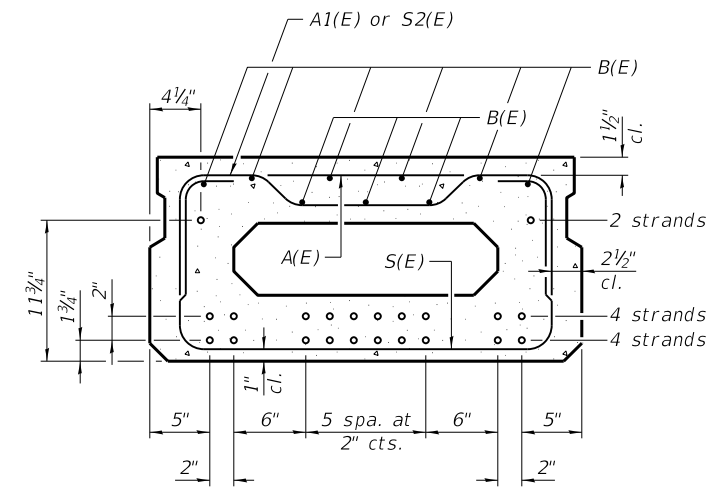




SECTION A-A

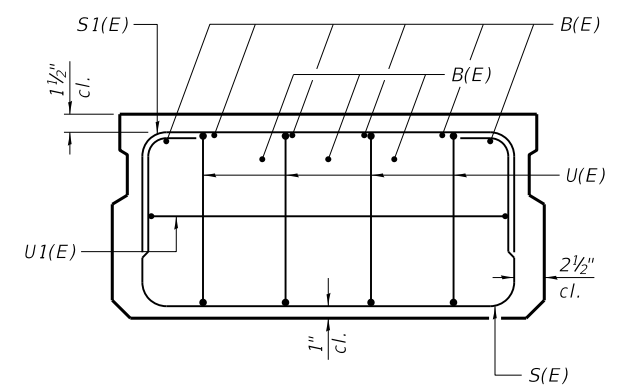


SECTION B-B  
(Showing dimensions)

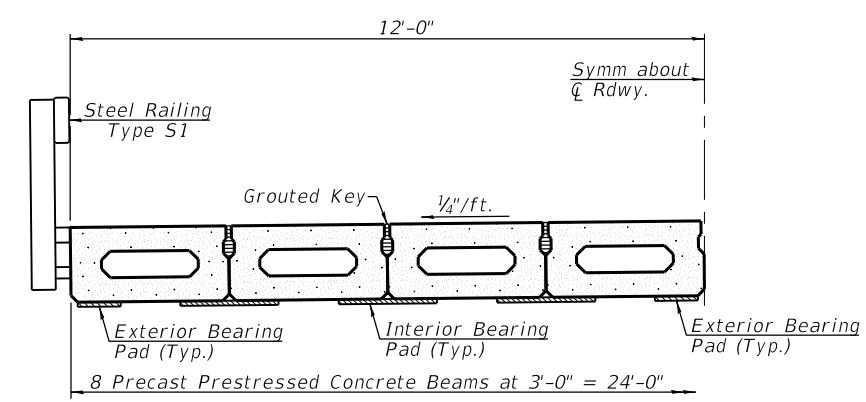


SECTION B-B  
(Showing reinforcement and permissible strand locations)

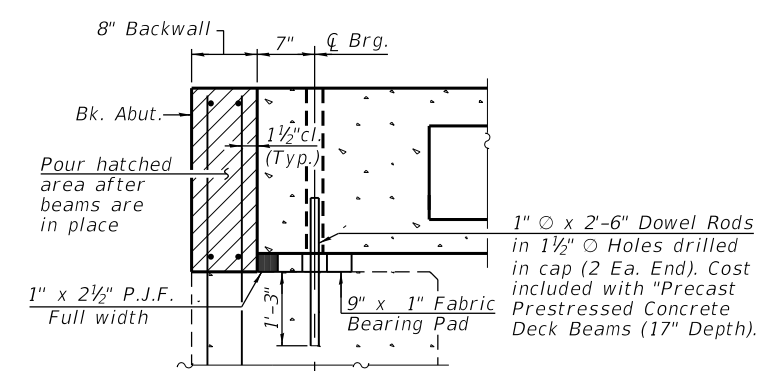
Note:  
Place the number of strands specified in each row symmetrically about the centerline of beam in the permissible strand locations shown.



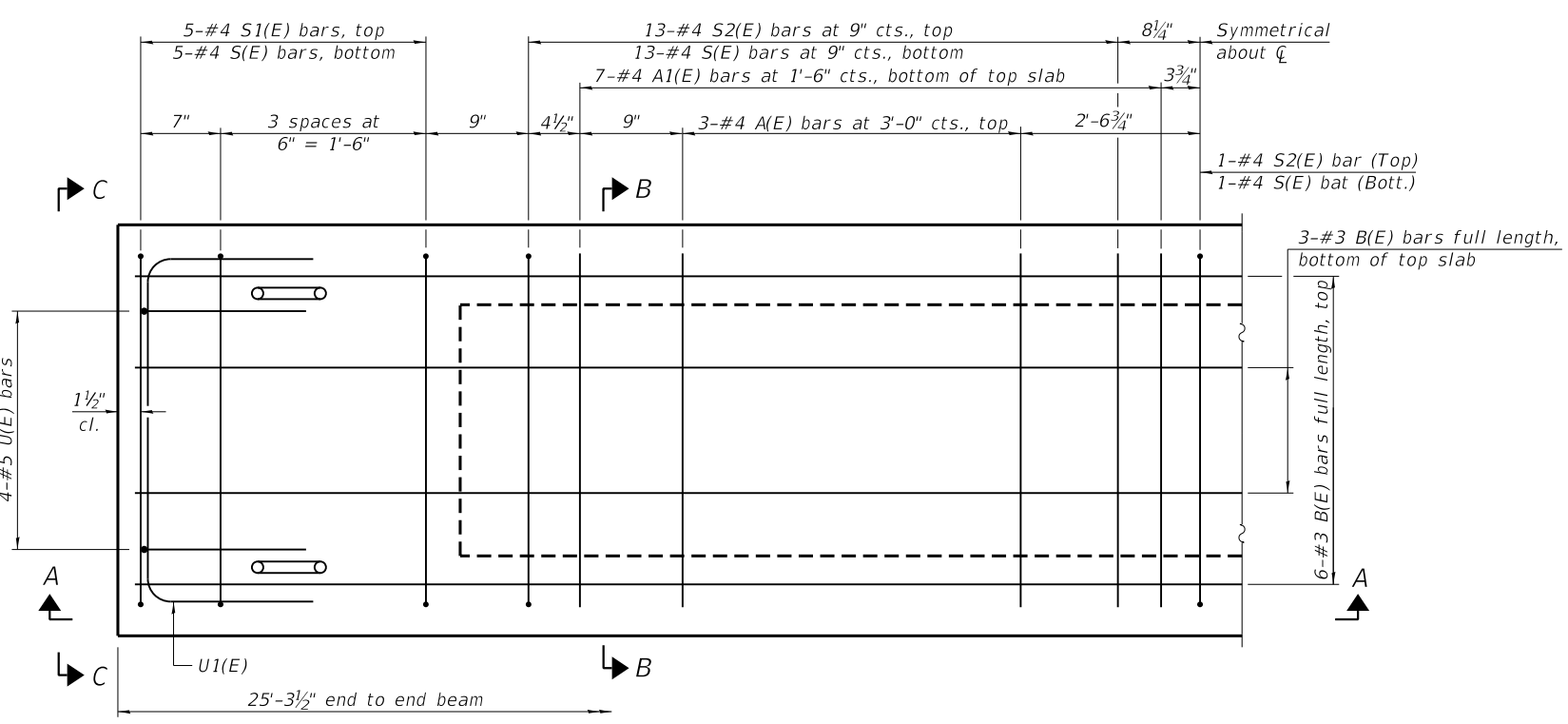
VIEW C-C



HALF CROSS SECTION



SECTION THRU ABUTMENT  
(At Right Angles)



PLAN VIEW

BAR LIST  
ONE BEAM ONLY  
(For information only)

Bar	No.	Size	Length	Shape
A(E)	6	#4	2'-7"	—
A1(E)	14	#4	2'-10"	—
B(E)	9	#3	25'-0"	—
S(E)	37	#4	5'-9"	U
S1(E)	10	#4	4'-3"	U
S2(E)	27	#4	4'-6"	U
U(E)	8	#5	3'-8"	C
U1(E)	2	#4	5'-0"	C

Note:  
See sheet 5 of 14 for additional details and Bill of Material.

Note:  
Spacing of S(E) and S2(E) bars may be adjusted up to 4" in the immediate area of the transverse tie diaphragms to miss the block outs for the transverse ties.

MINIMUM BAR LAP  
#3 bar = 1'-4"

MODEL: 004  
FILE NAME: V:\Sponsored\2010 V and K Jobs\5316 CH 33 over Job's Creek\CADD\_Sheets\5316-Struct\Structure.dgn

PD-1736-0

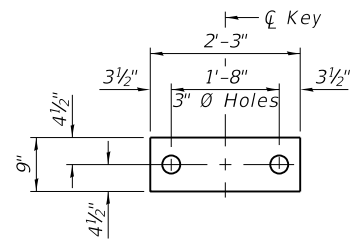
4-4-2025

USER NAME = MFiaush	DESIGNED -	REVISED -
PLOT SCALE = 2.0000' / in.	DRAWN -	REVISED -
PLOT DATE = 12/4/2025	CHECKED -	REVISED -
	DATE -	REVISED -

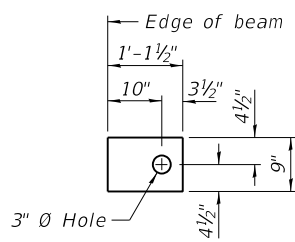


17" x 36" PPC DECK BEAM (SPANS 1 & 3)			
STRUCTURE NO. 059-3334			
SCALE: NONE	SHEET 4	OF 14 SHEETS	STA. TO STA.

C.H. RTE.	SECTION	COUNTY	TOTAL SHEETS	SHEET NO.
33	24-00109-00-BR	MACOUPIN	28	10
CONTRACT NO. 93856				
ILLINOIS FED. AID PROJECT				



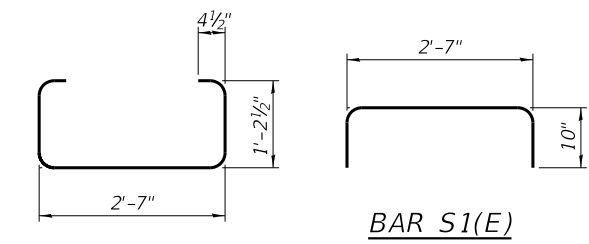
**FABRIC BEARING PAD**  
(Interior)



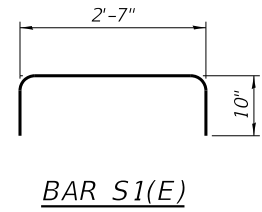
**FABRIC BEARING PAD**  
(Exterior)

**FIXED**

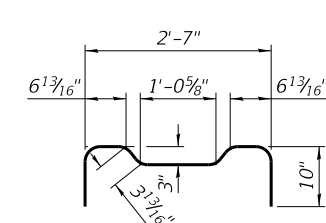
Notes:  
All bearing pads shall be 1" thick.  
Omit holes when using expansion bearings.  
Expansion bearing pads shall be bonded to the substructure.



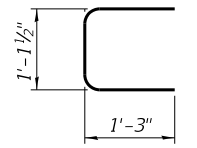
**BAR S(E)**



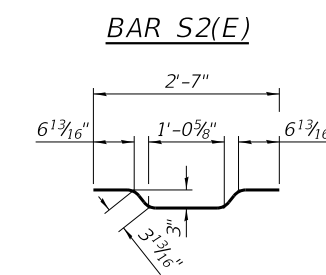
**BAR S1(E)**



**BAR U(E)**

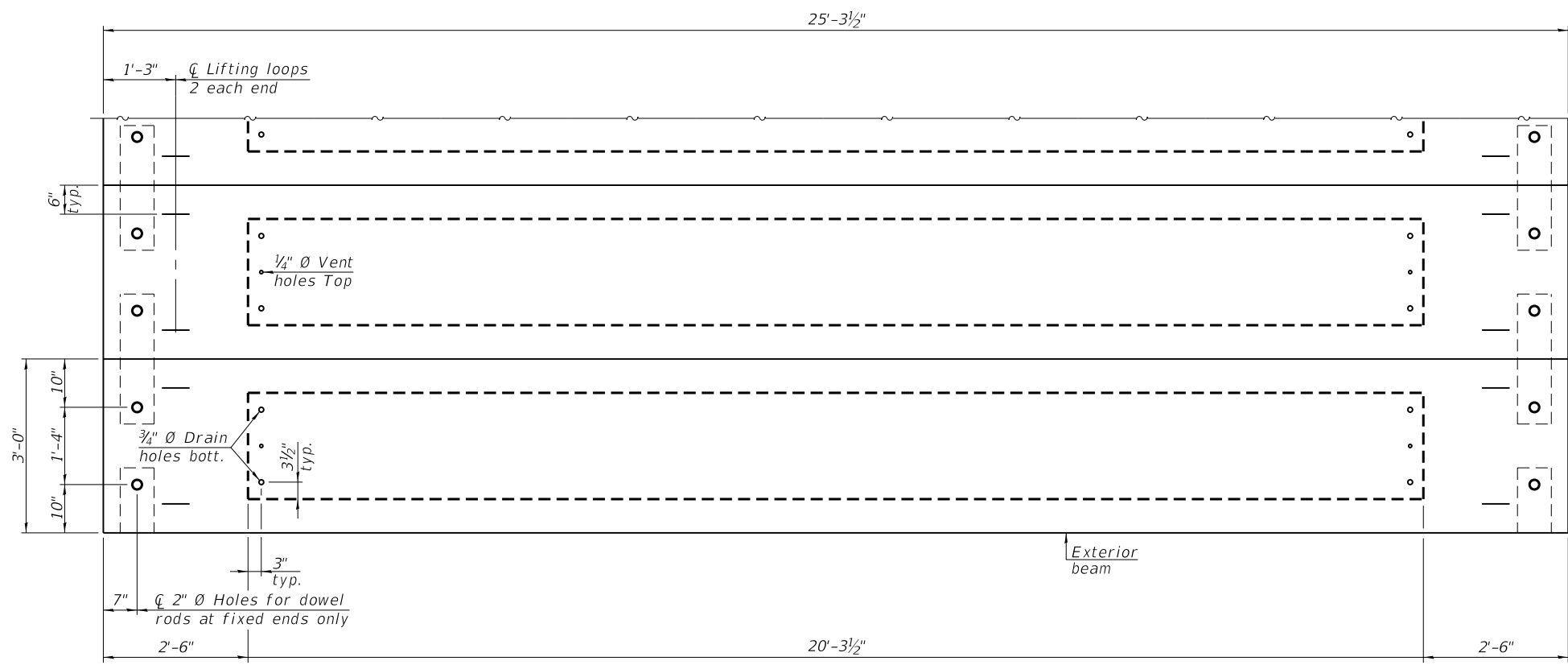
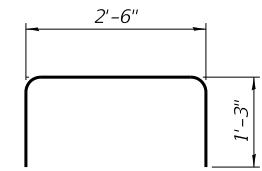


**BAR U1(E)**

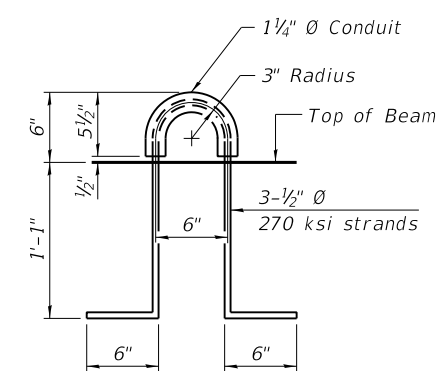


**BAR S2(E)**

**BAR A1(E)**



**PLAN VIEW**



**LIFTING LOOP DETAIL**

**NOTES**

Prestressing steel shall be uncoated high strength, low relaxation 7-wire strand, Grade 270.  
The nominal diameter shall be 1/2" and the nominal cross-sectional area shall be 0.153 sq. in.  
The 1" Ø rods in the transverse tie assembly shall be tightened to a snug fit and the threads set. Pockets on exterior faces of bridge shall be filled with grout after transverse tie assembly is in place.  
Two 1/8" fabric adjusting shims of the dimensions of the exterior bearing pad shall be provided for each bearing pad location.  
A minimum 2 1/2" Ø lifting pin shall be used to engage the lifting loops during handling.  
Corrosion Inhibitor, per Article 1020.05(b)(10) and 1021.07 of the Standard Specifications, shall be used in the concrete for precast prestressed concrete deck beams.  
Compressive strength of prestressed concrete, f'c, shall be 6000 psi.  
Compressive strength of prestressed concrete at release, f'ci, shall be 5000 psi.

**BILL OF MATERIAL**

Precast Prestressed Conc. Deck Bms. (17" depth)	Sq. Ft.	1214
---	---------	------

Note:  
Connect beams in pairs with the transverse tie configuration shown.

PDD-1736-0

5-15-2023

USER NAME = MFiaush	DESIGNED -	REVISED -
PLOT SCALE = 2.0000' / in.	DRAWN -	REVISED -
PLOT DATE = 12/4/2025	CHECKED -	REVISED -
	DATE -	REVISED -

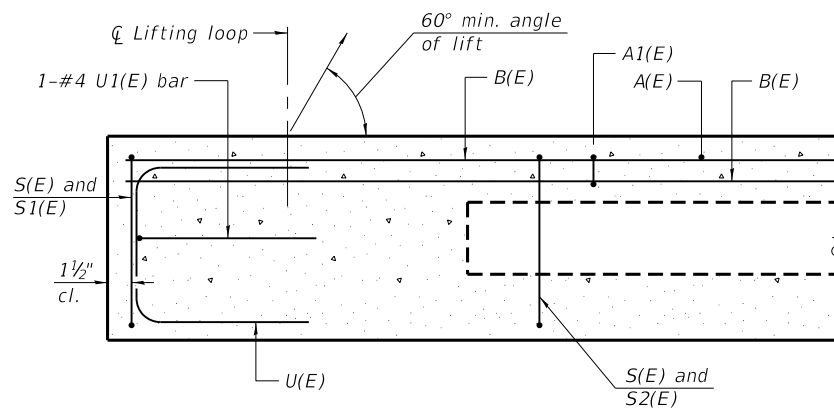


**17" x 36" PPC DECK BEAM (SPANS 1 & 3)**  
**STRUCTURE NO. 059-3334**

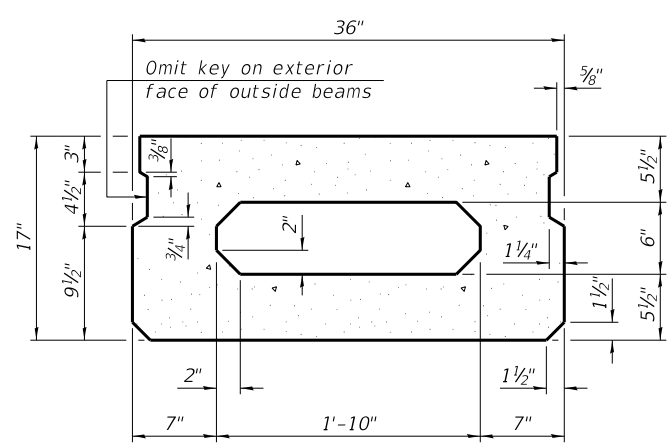
SCALE: NONE SHEET 5 OF 14 SHEETS STA. TO STA.

C.H. RTE.	SECTION	COUNTY	TOTAL SHEETS	SHEET NO.
33	24-00109-00-BR	MACOUPIN	28	11
ILLINOIS			FED. AID PROJECT	

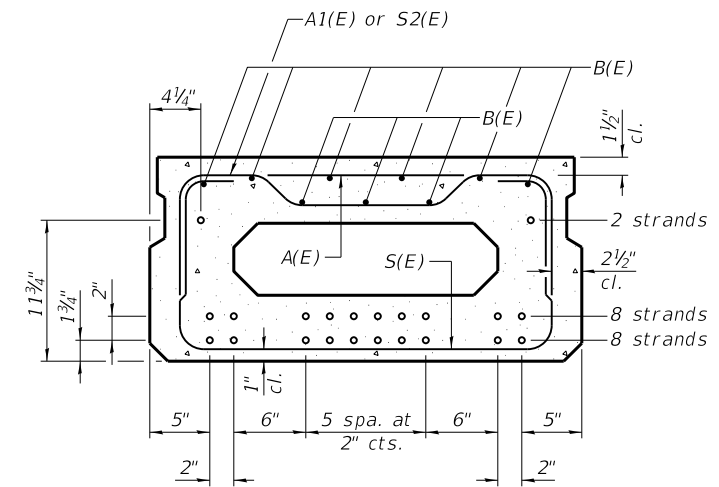
MODEL: 005 FILE NAME: \\S:\projects\1736-0 V and K\_1736\3316 CH 33 over Joe's Creek\CADD\_Sheets\3316-Struct\Structure.dgn



SECTION A-A

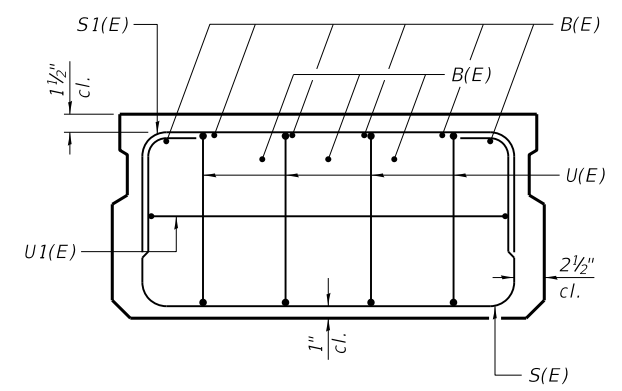


SECTION B-B  
(Showing dimensions)

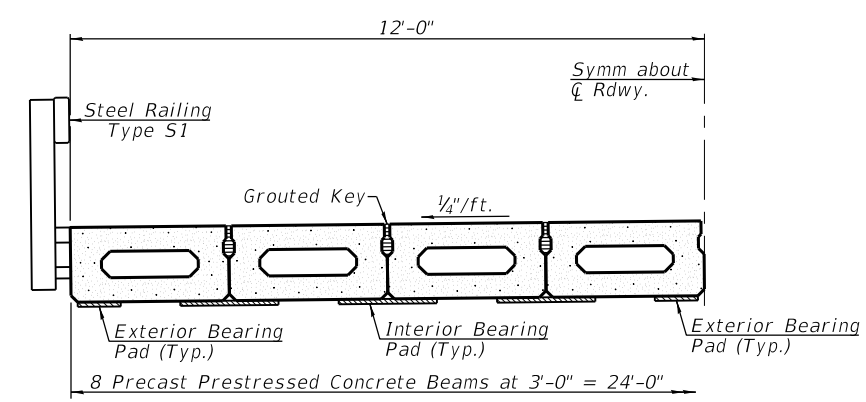


SECTION B-B  
(Showing reinforcement and permissible strand locations)

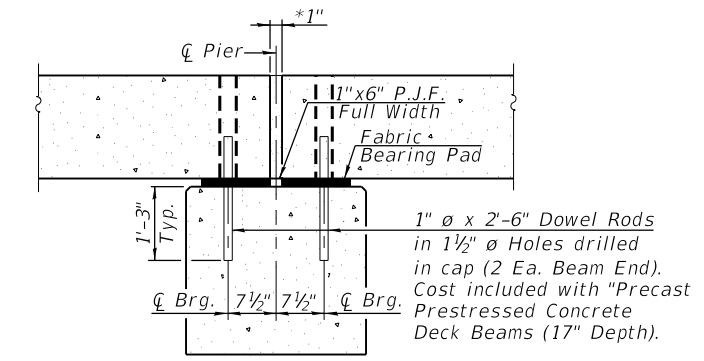
Note:  
Place the number of strands specified in each row symmetrically about the centerline of beam in the permissible strand locations shown.



VIEW C-C

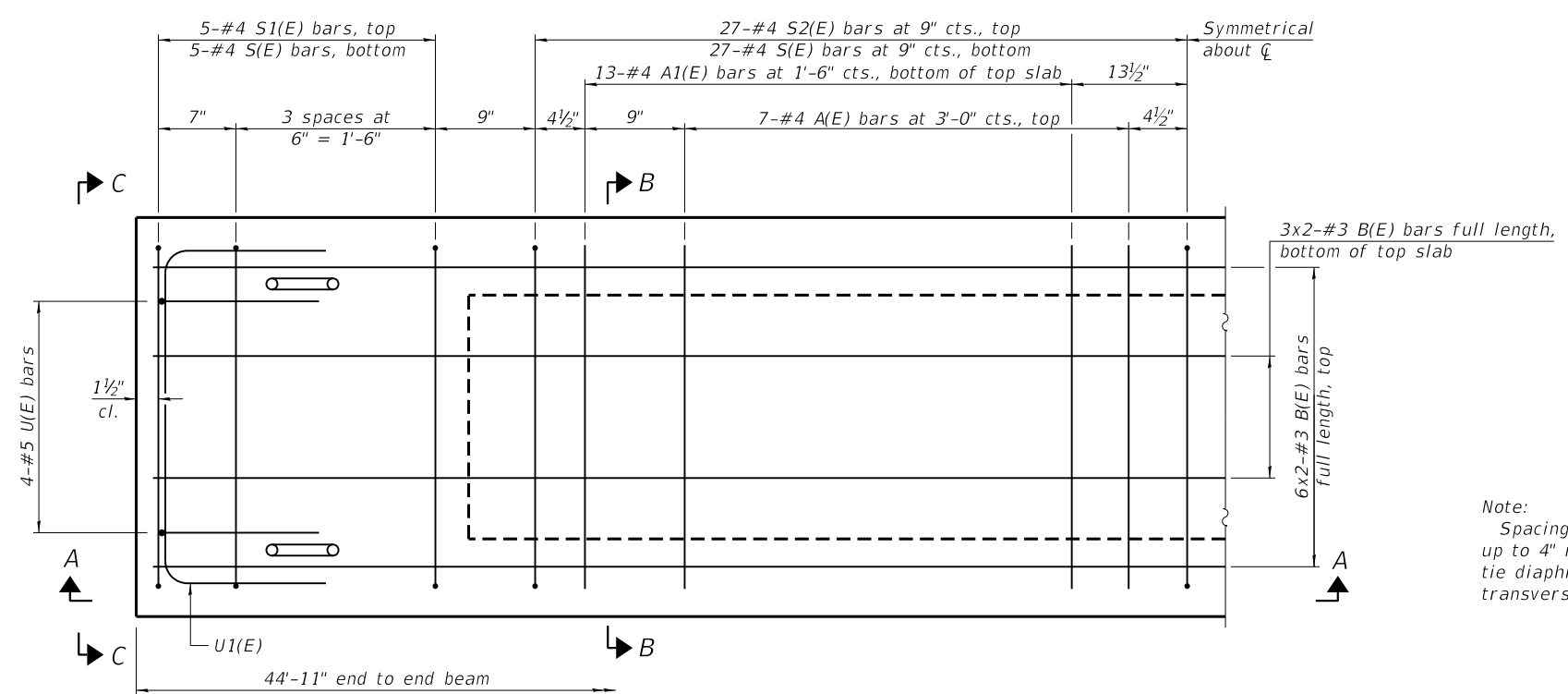


HALF CROSS SECTION



SECTION THRU PIER  
(At right angles)

1"  $\phi$  x 2'-6" Dowel Rods in 1 1/2"  $\phi$  Holes drilled in cap (2 Ea. Beam End). Cost included with "Precast Prestressed Concrete Deck Beams (17" Depth).



PLAN VIEW

BAR LIST  
ONE BEAM ONLY  
(For information only)

Bar	No.	Size	Length	Shape
A(E)	14	#4	2'-7"	—
A1(E)	26	#4	2'-10"	—
B(E)	18	#3	23'-0"	—
S(E)	63	#4	5'-9"	□
S1(E)	10	#4	4'-3"	□
S2(E)	53	#4	4'-6"	□
U(E)	8	#5	3'-8"	□
U1(E)	2	#4	5'-0"	□

Note:  
See sheet 7 of 14 for additional details and Bill of Material.

Note:  
Spacing of S(E) and S2(E) bars may be adjusted up to 4" in the immediate area of the transverse tie diaphragms to miss the block outs for the transverse ties.

MINIMUM BAR LAP  
#3 bar = 1'-4"

MODEL: 005 FILE NAME: V:\Sponsored\2010\_V and K\_10050316\_CH 33 over Joe's Creek\CADD\_Sheets\S316-Structures.dgn

PD-1736-0

4-4-2025

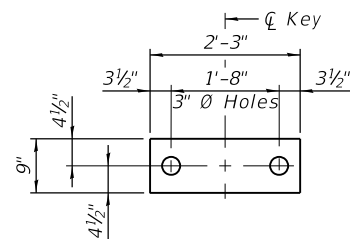
USER NAME = MFiaush	DESIGNED -	REVISED -
PLOT SCALE = 2.0000' / in.	DRAWN -	REVISED -
PLOT DATE = 12/4/2025	CHECKED -	REVISED -
	DATE -	REVISED -



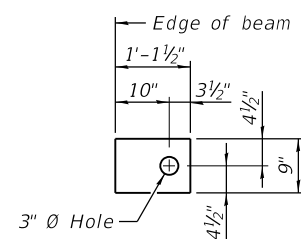
17" x 36" PPC DECK BEAM (SPAN 2)  
STRUCTURE NO. 059-3334

SCALE: NONE SHEET 6 OF 14 SHEETS STA. TO STA.

C.H. RTE.	SECTION	COUNTY	TOTAL SHEETS	SHEET NO.
33	24-00109-00-BR	MACOUPIN	28	12
CONTRACT NO. 93856				
ILLINOIS		FED. AID PROJECT		



FABRIC BEARING PAD  
(Interior)

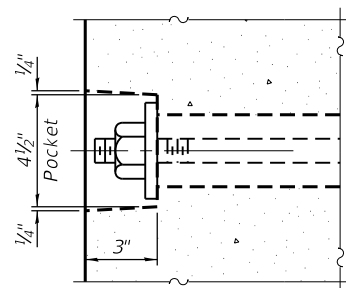


FABRIC BEARING PAD  
(Exterior)

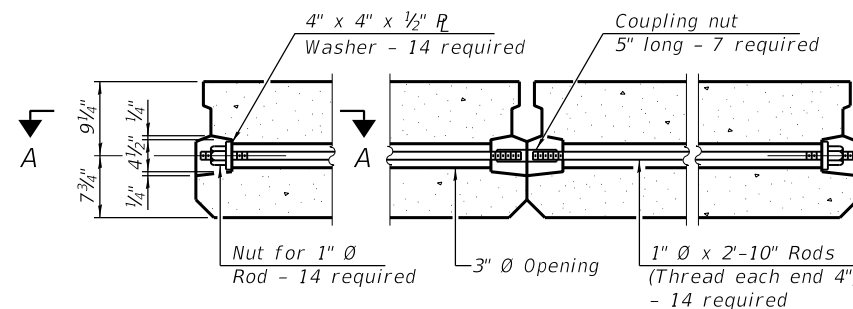
FIXED

Notes:

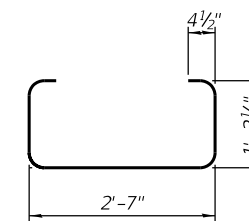
- All bearing pads shall be 1" thick.
- Omit holes when using expansion bearings.
- Expansion bearing pads shall be bonded to the substructure.



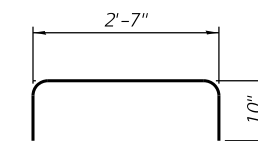
SECTION A-A



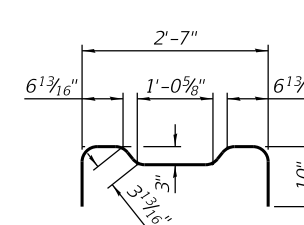
TYPICAL TRANSVERSE TIE ASSEMBLY



BAR S(E)

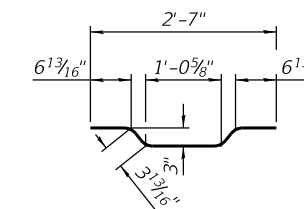


BAR S1(E)

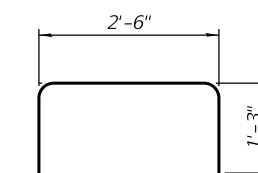


BAR U(E)

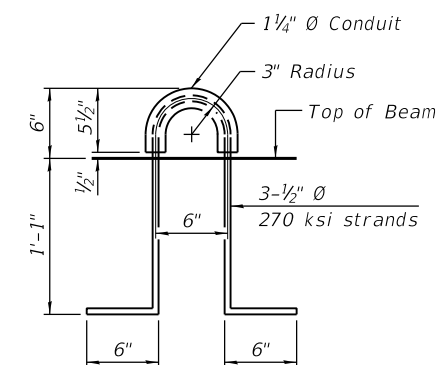
BAR S2(E)



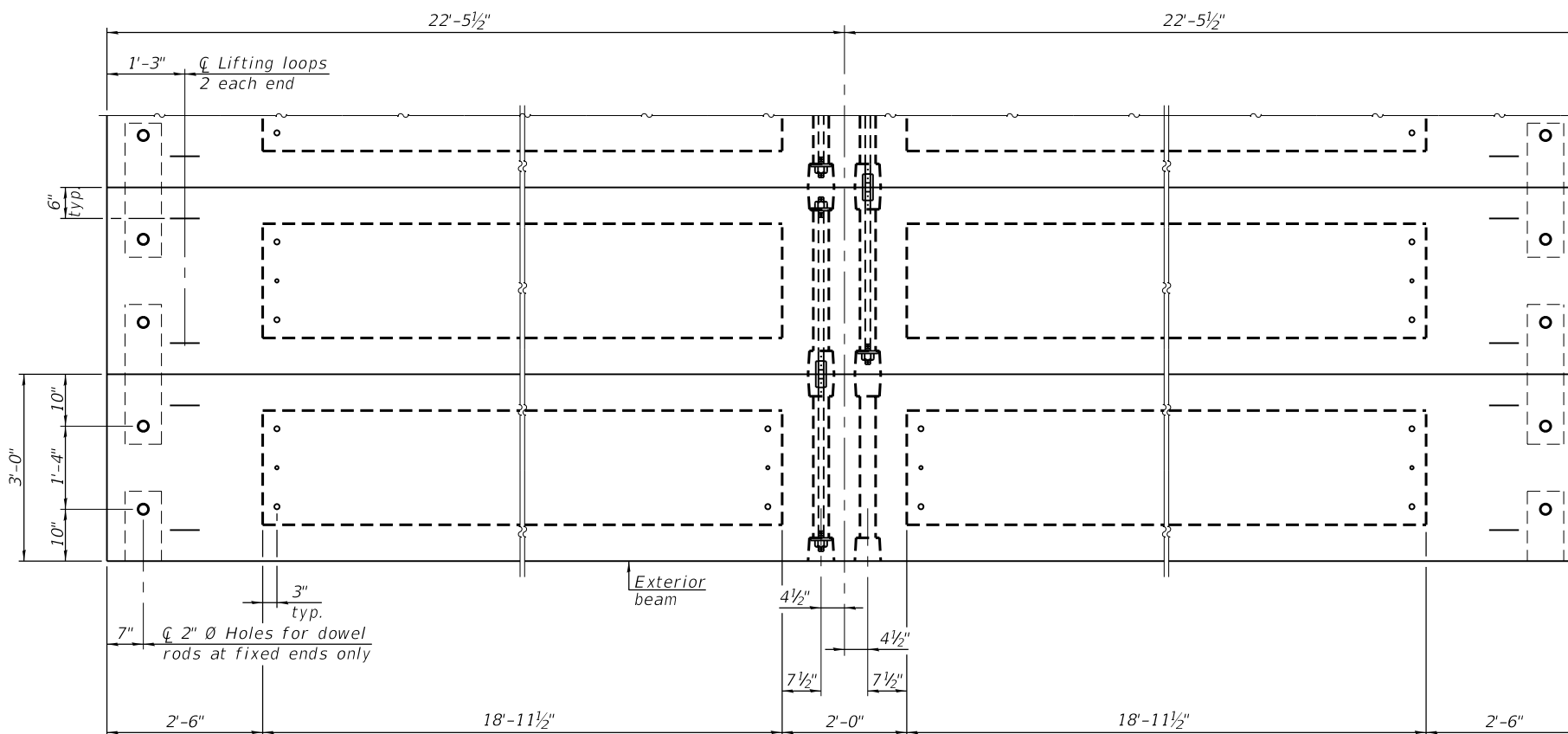
BAR A1(E)



BAR U1(E)



LIFTING LOOP DETAIL



PLAN VIEW

NOTES

Note:  
Connect beams in pairs with the transverse tie configuration shown.

- Prestressing steel shall be uncoated high strength, low relaxation 7-wire strand, Grade 270. The nominal diameter shall be 1/2" and the nominal cross-sectional area shall be 0.153 sq. in.
- The 1" Ø rods in the transverse tie assembly shall be tightened to a snug fit and the threads set. Pockets on exterior faces of bridge shall be filled with grout after transverse tie assembly is in place.
- Two 1/8" fabric adjusting shims of the dimensions of the exterior bearing pad shall be provided for each bearing pad location.
- A minimum 2 1/2" Ø lifting pin shall be used to engage the lifting loops during handling.
- Corrosion Inhibitor, per Article 1020.05(b)(10) and 1021.07 of the Standard Specifications, shall be used in the concrete for prestressed concrete deck beams.
- Compressive strength of prestressed concrete, f'c, shall be 6000 psi.
- Compressive strength of prestressed concrete at release, f'ci, shall be 5000 psi.

BILL OF MATERIAL

Precast Prestressed Conc. Deck Bms. (17" depth)	Sq. Ft.	1078
---	---------	------

PDD-1736-0

5-15-2023

USER NAME = MFiaush	DESIGNED -	REVISED -
PLOT SCALE = 2.0000' / in.	DRAWN -	REVISED -
PLOT DATE = 12/4/2025	CHECKED -	REVISED -
	DATE -	REVISED -



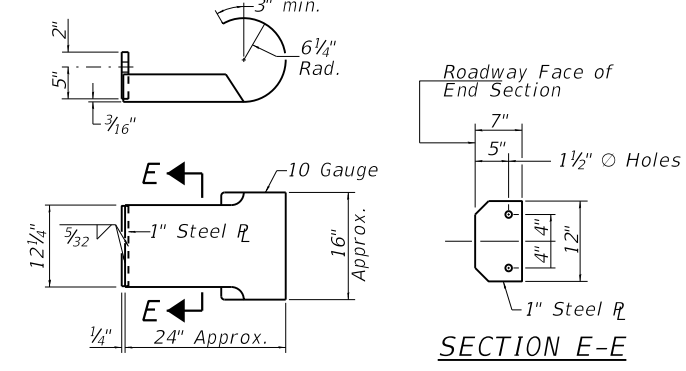
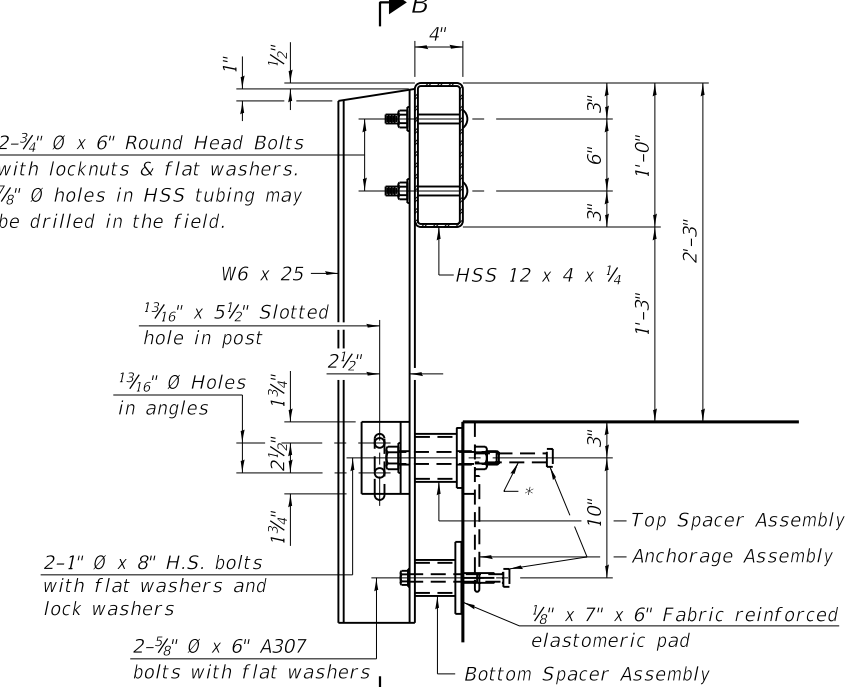
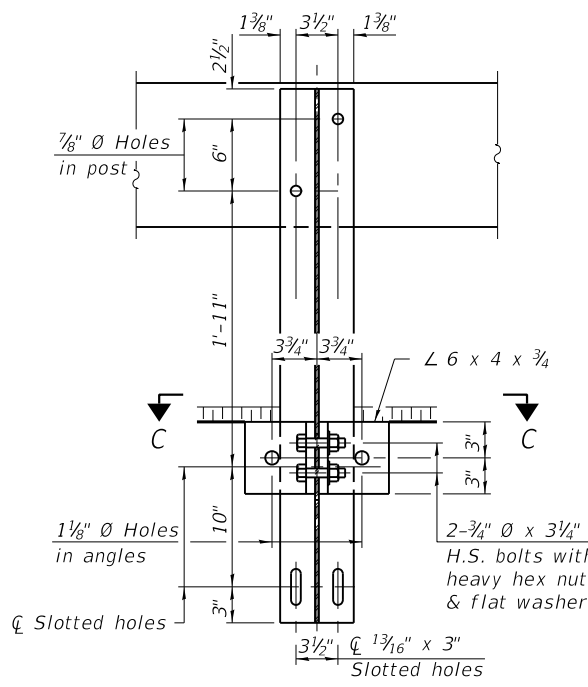
17" x 36" PPC DECK BEAM (SPAN 2)  
STRUCTURE NO. 059-3334

SCALE: NONE SHEET 7 OF 14 SHEETS STA. TO STA.

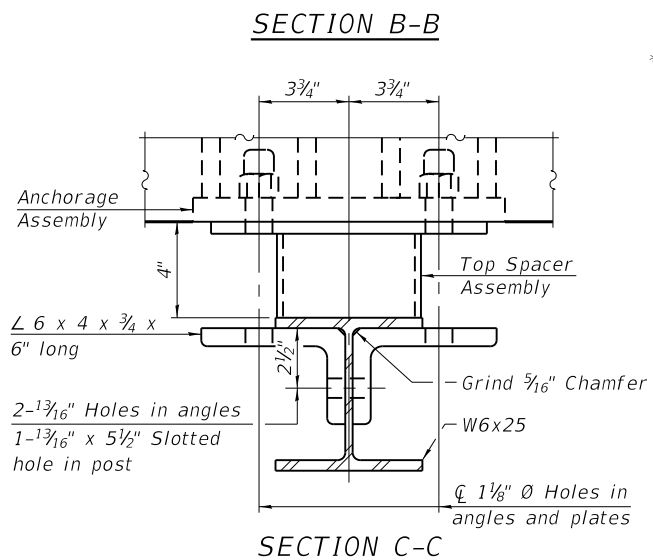
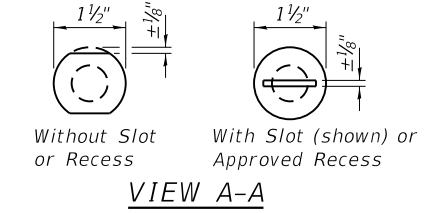
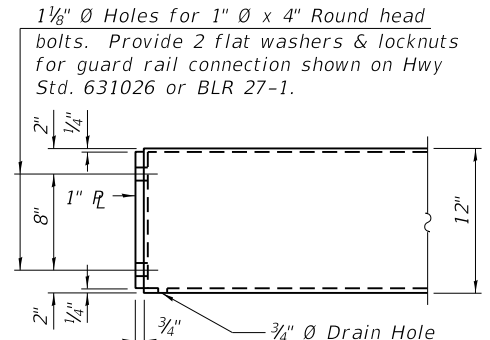
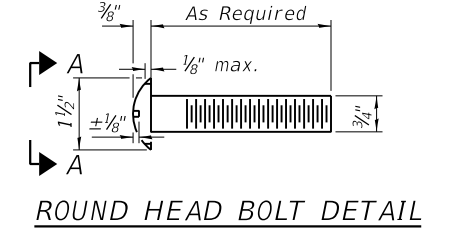
C.H. RTE.	SECTION	COUNTY	TOTAL SHEETS	SHEET NO.
33	24-00109-00-BR	MACOUPIN	28	13
CONTRACT NO. 93856				
ILLINOIS FED. AID PROJECT				

MODEL: 007 FILE NAME: V:\S\p\fields\20\_V and L\_R\0505316\_CH\_33\_over\_Joe's\_Creek\CADD\_Sheets\316-Structures.dgn

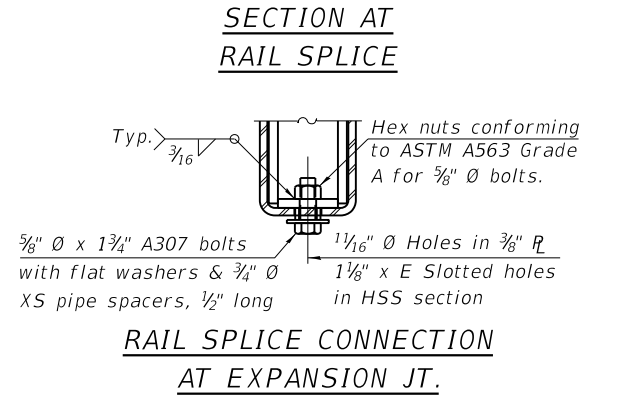
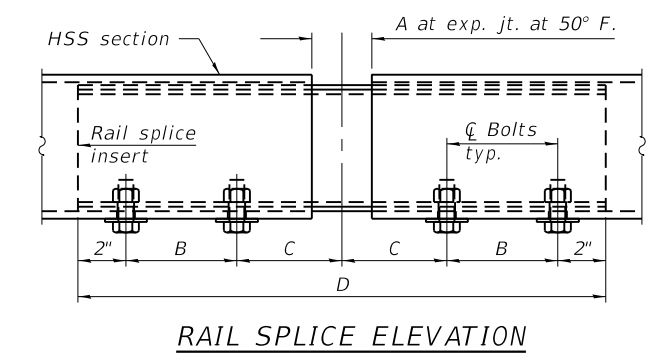
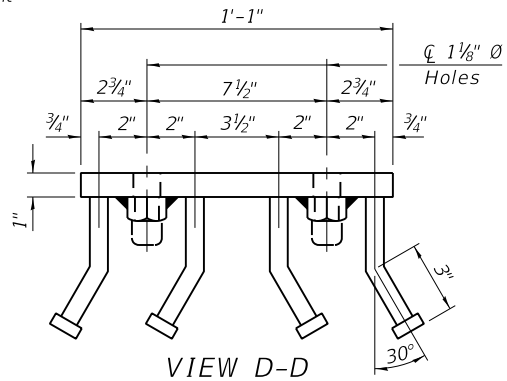
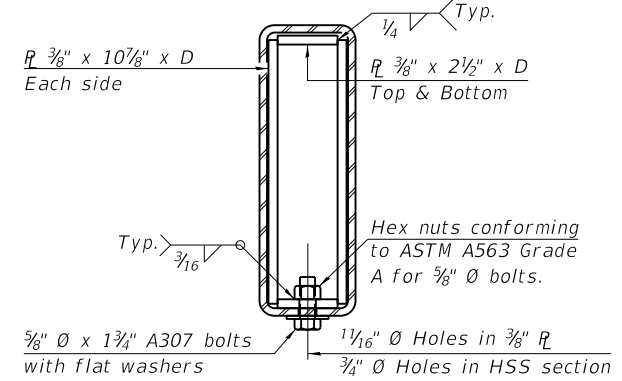
Notes:  
 A sufficient number of shims of various thicknesses, sized to fit behind the top spacer assembly, 5" x 11 1/2", and bottom spacer assembly, 6" x 7", shall be provided to adjust posts for proper alignment. If the summation of shims is greater than 1/4" (top) or 1/2" (bottom), longer bolts are required. Cost included with Steel Railing, Type S1.  
 All steel rail elements including shims shall be galvanized according to Article 509.05 of the Standard Specifications.  
 All HSS tubing serving as railing shall be CVN tested according to Article 1006.34(b) of the Standard Specifications.  
 Rail splice inserts may be built out of 2 - 3/8" bent plates in lieu of the 4 plate rail splice inserts shown, provided the outside dimensions are matched.  
 All round head bolts shall be ASTM A307 with locknuts according to ASTM A563 grade A.



**CURLED END SECTION DETAILS**  
 (4 Required)  
 (Curled End Sections according to Article 1006.34(c) of the Standard Specifications. Cost of Curled End Sections to be included in the cost of Steel Railing, Type S1)



\* The outermost longitudinal reinforcement bar shall be placed directly above the studs of the rail post anchorage assembly. The anchorage studs may be bent down 1/2" to accommodate the top reinforcement bar placement.



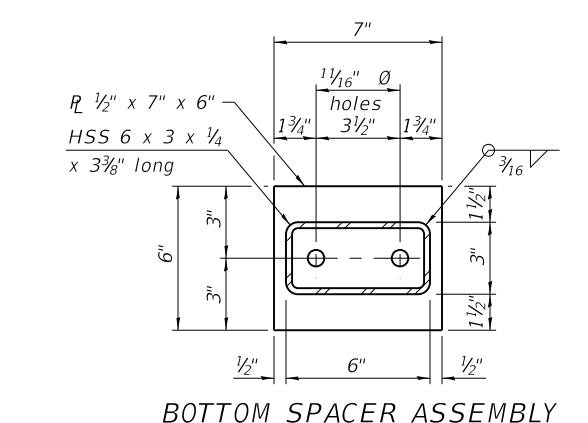
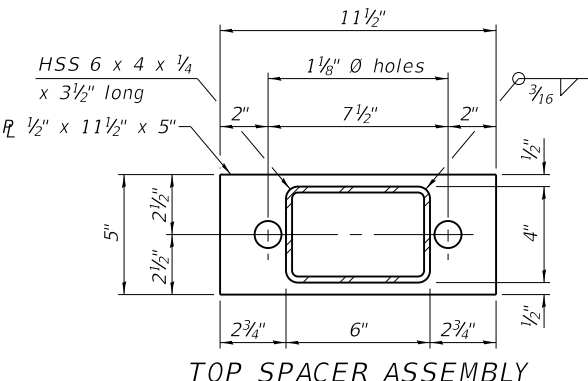
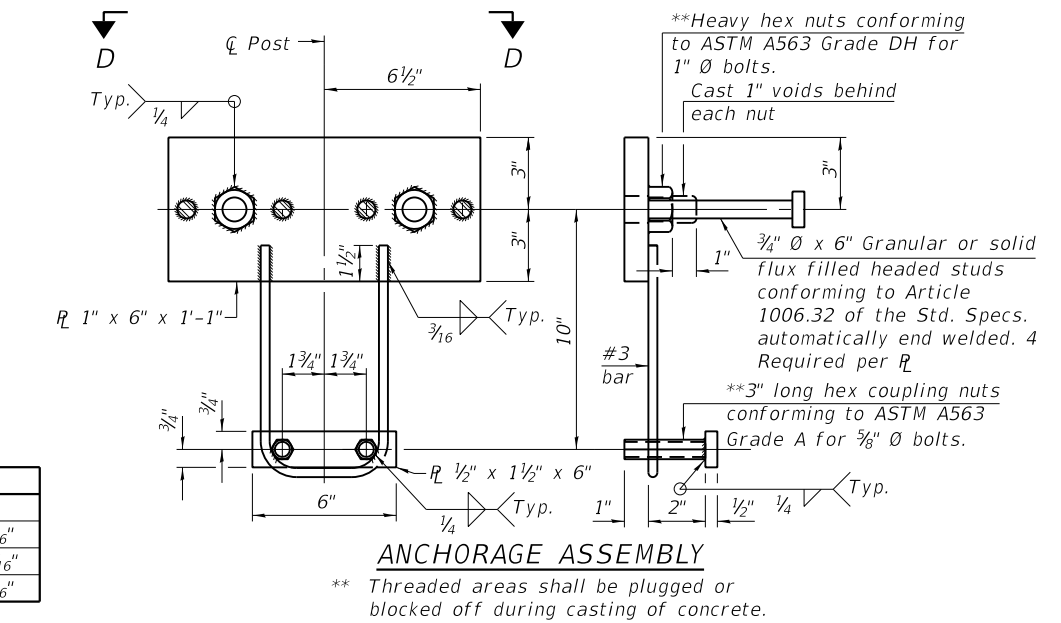
**RAILING CRITERIA**

NCHRP 350 Test Level	2
Railing Weight (plf)	50
Max Post Spacing	10'-9"
HMA thickness range (in)	1 1/4" - 3 1/8"

**SPLICE DIMENSIONS**

Location	T	A	B	C	D	E
All locs. not over exp. jts.	0	1/4"	4"	4"	1'-8"	-
Over Strip Seal Jt.	≤ 4"	2 1/2"	4 7/8"	4 7/8"	1'-10"	3 1/16"
Over Finger or Modular Jt.	≤ 9 1/2"	5 1/2"	7 3/8"	7 1/4"	2'-9 1/4"	5 1 3/16"
Over Finger or Modular Jt.	≤ 15"	8 1/4"	10 1/8"	10"	3'-8 1/4"	8 9/16"

T = ; total movement along centerline of roadway at expansion joint.



**BILL OF MATERIAL**

Item	Unit	Quantity
Steel Railing, Type S1	Foot	194

MODEL: 009 FILE NAME: V:\S\Railings\20 V and L RailS316 CH 33 over Joe's Creek\CADD\_Sheets\S316-Str-Structures.dgn

R-23A 10-12-2021

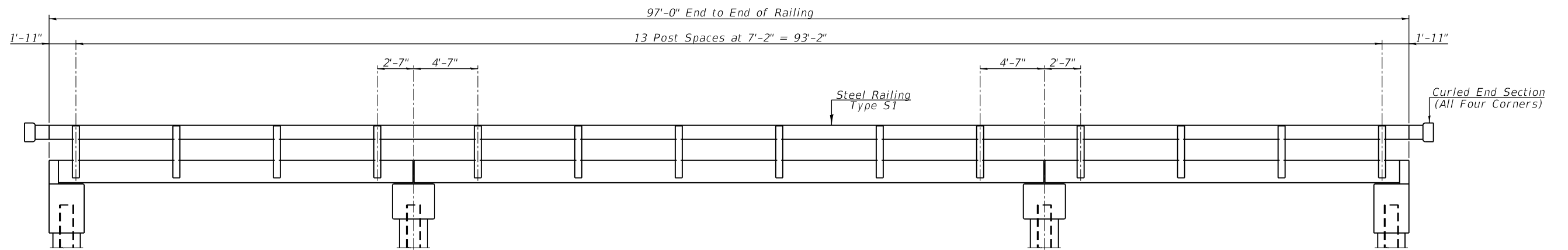
USER NAME = CKohlrus	DESIGNED -	REvised -
PLOT SCALE = 2.0000' / in.	DRAWN -	REvised -
PLOT DATE = 1/14/2026	CHECKED -	REvised -
	DATE -	REvised -



**STEEL RAILING, TYPE S1**  
**STRUCTURE NO. 059-3334**

SCALE: NONE SHEET 8 OF 14 SHEETS STA. TO STA.

C.H. RTE.	SECTION	COUNTY	TOTAL SHEETS	SHEET NO.
33	24-00109-00-BR	MACOUPIN	28	14
				CONTRACT NO. 93856
ILLINOIS FED. AID PROJECT				



**ELEVATION**  
 (Showing Outside Face)

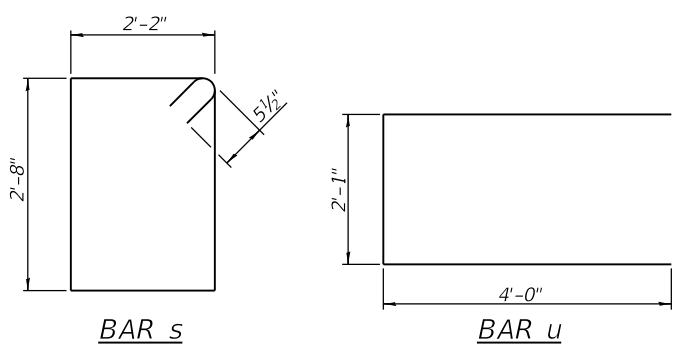
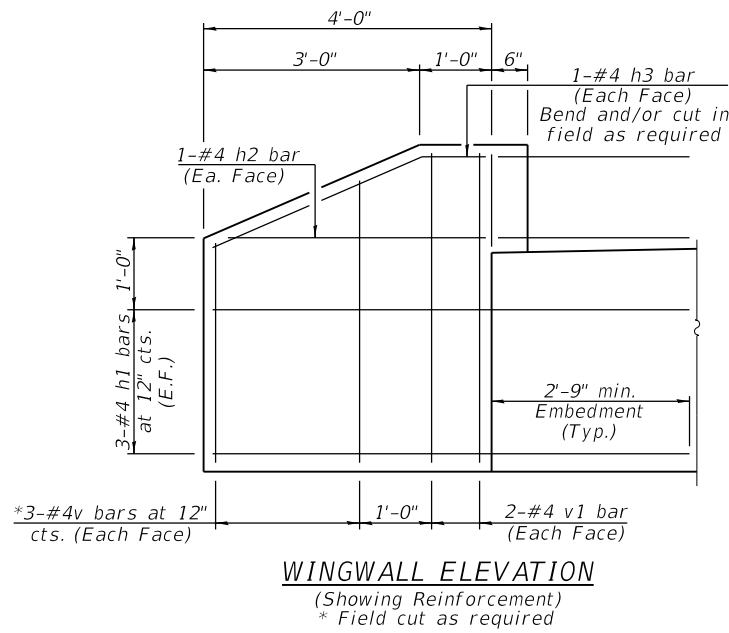
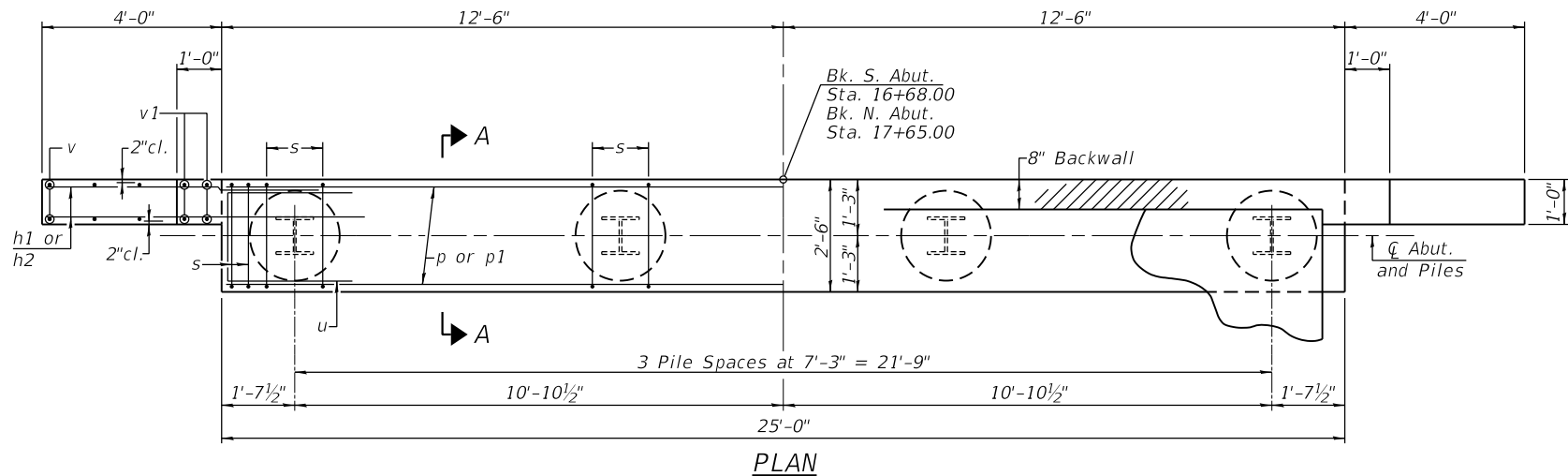
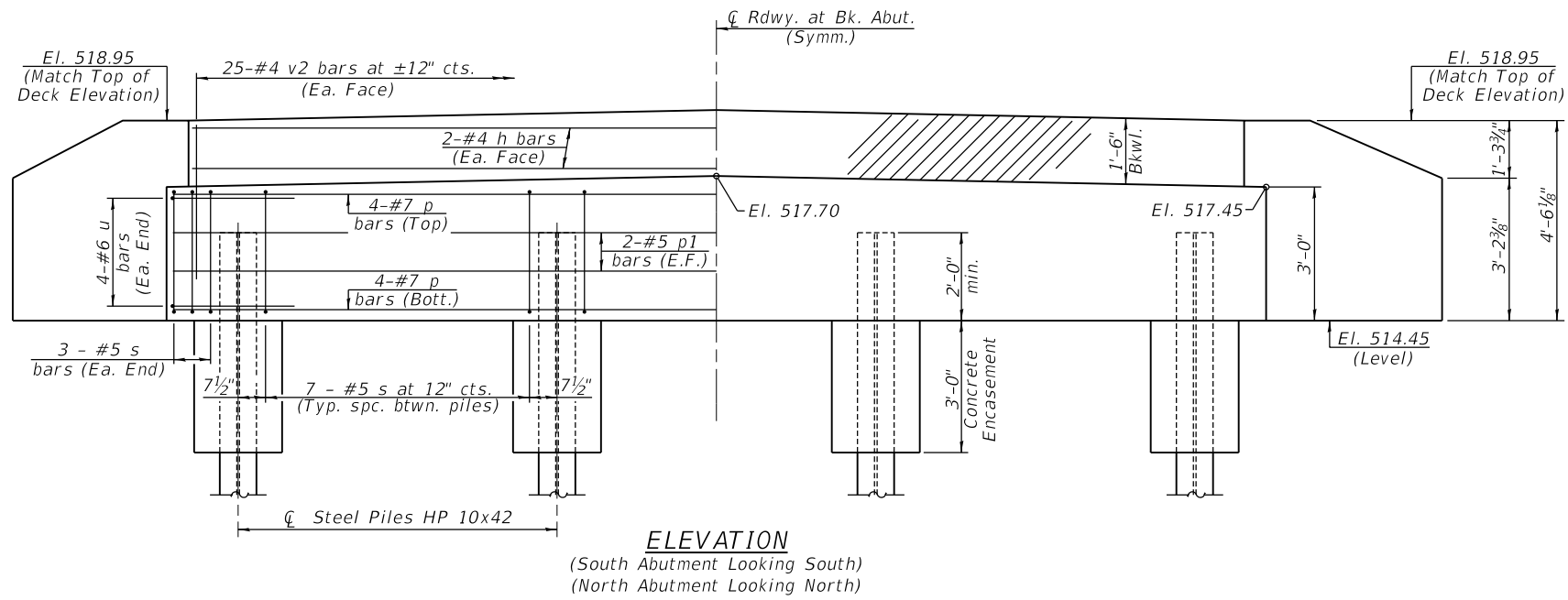
MODEL: 009  
 FILE NAME: \\S:\p\k\fields\20\_V and K\_in\053316\_CH\_33\_over\_Job's\_Creek\CADD\_Sheets\316-Struct\Structure.dgn

USER NAME = MFlaugh	DESIGNED -	REVISED -
	DRAWN -	REVISED -
PLOT SCALE = 0.0000' / in.	CHECKED -	REVISED -
PLOT DATE = 12/4/2025	DATE -	REVISED -



<b>STEEL RAILING, TYPE S1</b>	
<b>STRUCTURE NO. 059-3334</b>	
SCALE: NONE	SHEET 9 OF 14 SHEETS STA. TO STA.

C.H. RTE.	SECTION	COUNTY	TOTAL SHEETS	SHEET NO.
33	24-00109-00-BR	MACOUPIN	28	15
CONTRACT NO. 93856				
ILLINOIS FED. AID PROJECT				

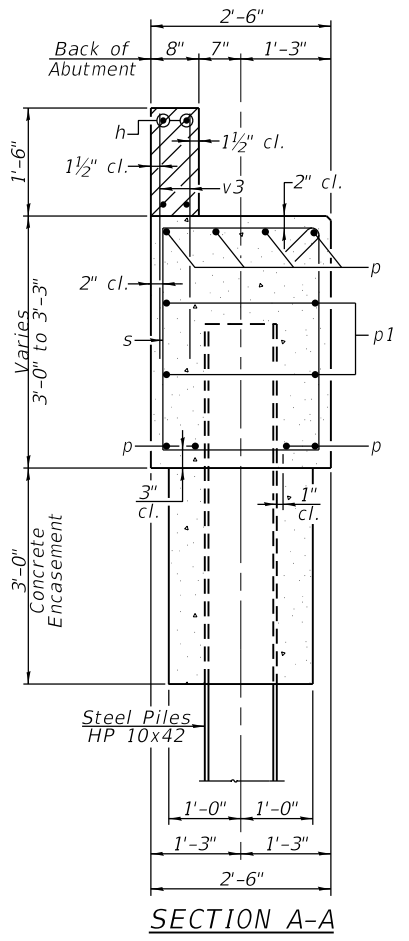


**PILE DATA**

Pile Type & Size:	South Abutment	North Abutment
	Steel HP 10x42 with Pile Shoes	335 Kips
Nominal Required Bearing:	184 Kips	184 Kips
Factored Resistance Available:	53'	51'
Estimated Pile Length:	4	3
Number of Production:	0	1
Number of Test Piles:		

**NOTES**

All exposed edges shall have standard  $\frac{3}{4}$ " chamfer. Wingwalls and Backwalls may, at the contractor's option, be cast monolithically. Hatched area and wingwalls shall be poured after deck beams are anchored in place. The Contractor shall drive one test pile at each abutment in a production location as specified or approved by the Engineer. For details of piles see Sheet 12 of 14.



**BILL OF MATERIAL TWO ABUTMENTS**

BAR	NO.	SIZE	LENGTH	SHAPE	
h	8	#4	23'-8"	—	
h1	24	#4	6'-8"	—	
h2	8	#4	6'-5"	—	
h3	8	#4	7'-4"	—	
p	16	#7	24'-8"	—	
p1	8	#5	24'-8"	—	
s	54	#5	10'-7"	□	
u	16	#6	10'-1"	□	
v	24	#4	3'-11"	—	
v1	16	#4	4'-3"	—	
v2	100	#4	2'-10"	—	
Concrete Structures				Cu. Yd.	18.8
Concrete Encasement				Cu. Yd.	2.8
Reinforcement Bars				Pound	2460
Furnishing Steel Piles HP10X42				Foot	365
Driving Piles				Foot	365
Test Pile Steel HP 10X42				Each	1
Pile Shoes				Each	8

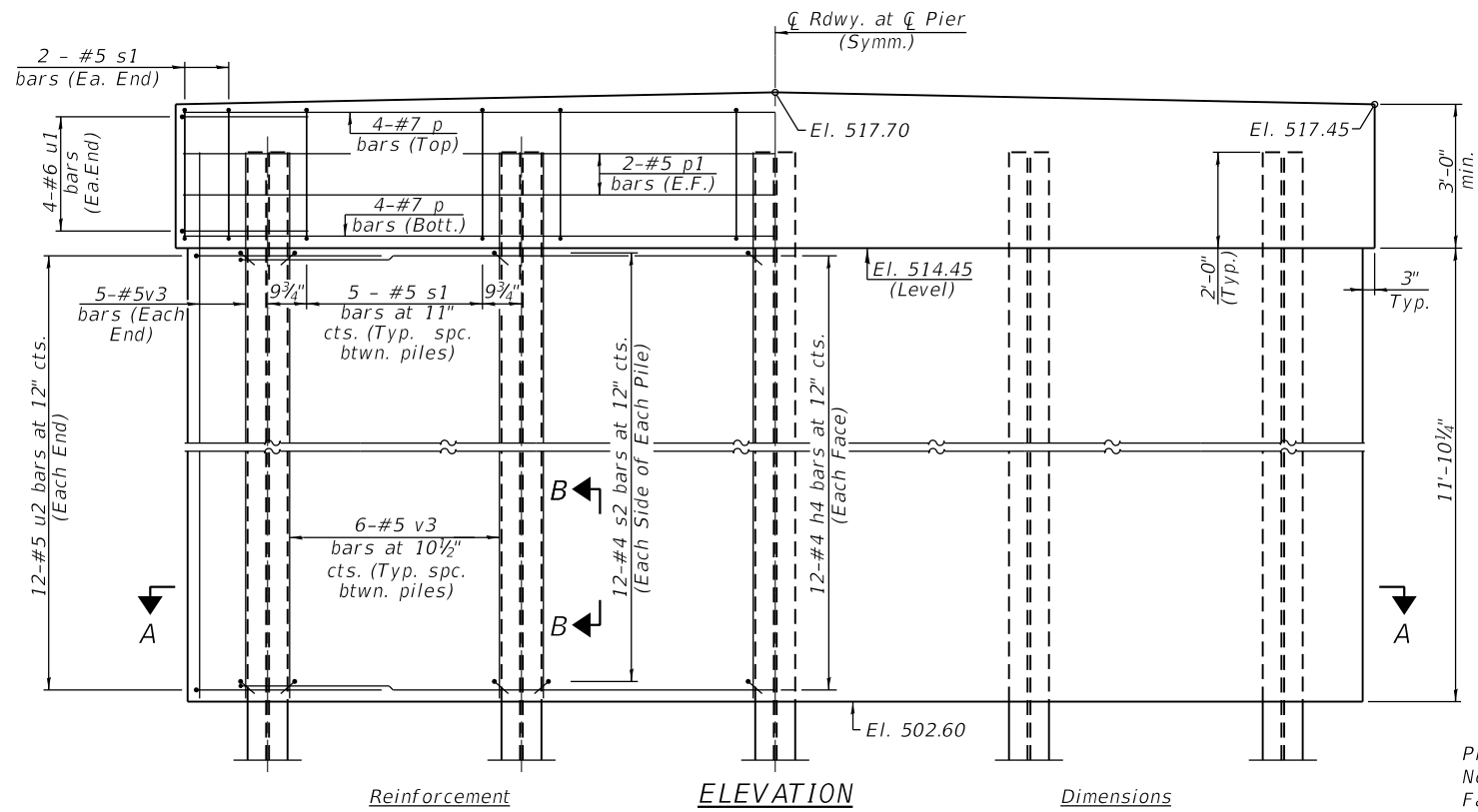
MODEL: 010 FILE NAME: V:\Sporfield\20\_V and L\_Rob\5316\_CH 33 over Joe's Creek\CADD\_Sheets\5316-Str-Structure.dgn

USER NAME = MFiaush	DESIGNED -	REVISED -
PLOT SCALE = 4.0000' / in.	DRAWN -	REVISED -
PLOT DATE = 12/4/2025	CHECKED -	REVISED -
	DATE -	REVISED -

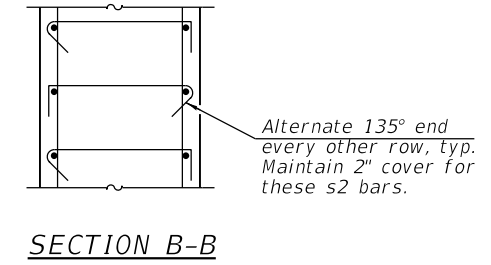


<b>ABUTMENTS</b>			
<b>STRUCTURE NO. 059-3334</b>			
SCALE: NONE	SHEET 10	OF 14 SHEETS	STA. TO STA.

C.H. RTE.	SECTION	COUNTY	TOTAL SHEETS	SHEET NO.
33	24-00109-00-BR	MACOUPIN	28	16
				CONTRACT NO. 93856
ILLINOIS FED. AID PROJECT				



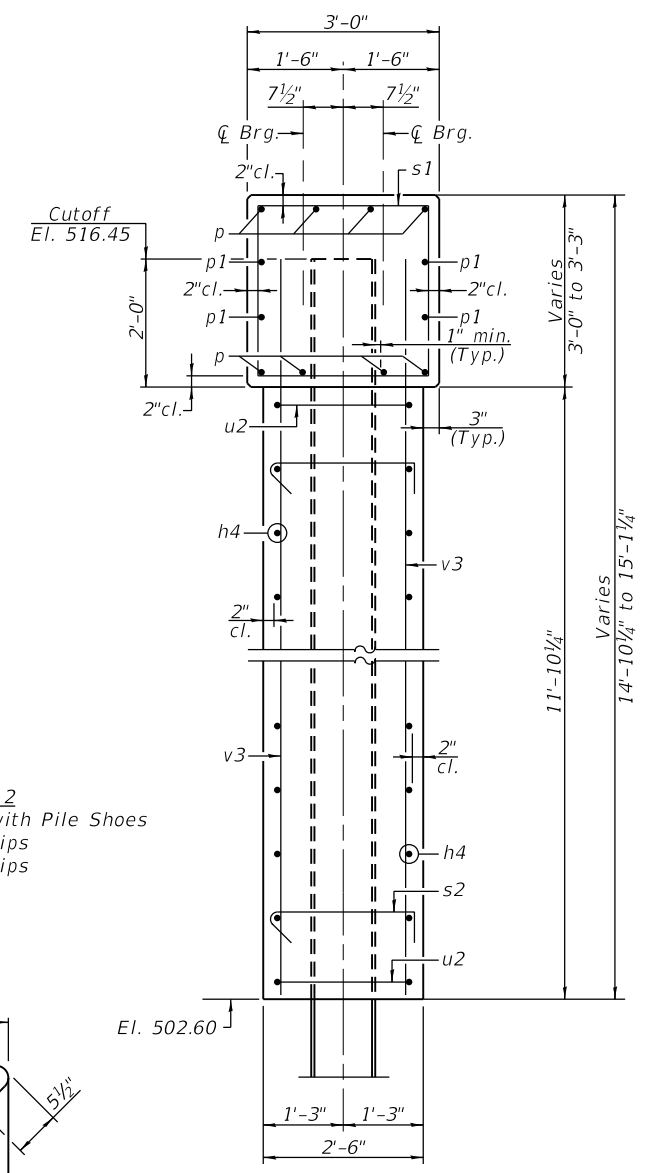
Reinforcement ELEVATION Dimensions



SECTION B-B

PILE DATA

	Pier 1	Pier 2
Pile Type & Size:	Steel HP 10x42 with Pile Shoes	Steel HP 10x42 with Pile Shoes
Nominal Required Bearing:	335 Kips	335 Kips
Factored Resistance Available:	184 Kips	184 Kips
Estimated Pile Length:	53'	51'
Number of Production:	4	5
Number of Test Piles:	1	0



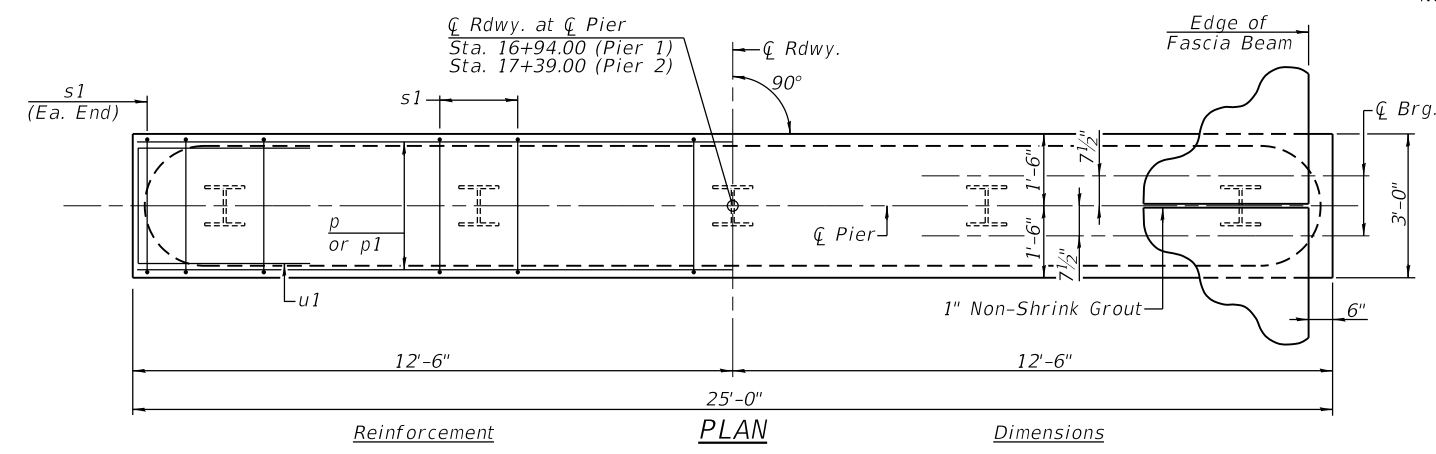
SECTION THRU PIER (Dimensions are at Rt. Z's)

BILL OF MATERIAL

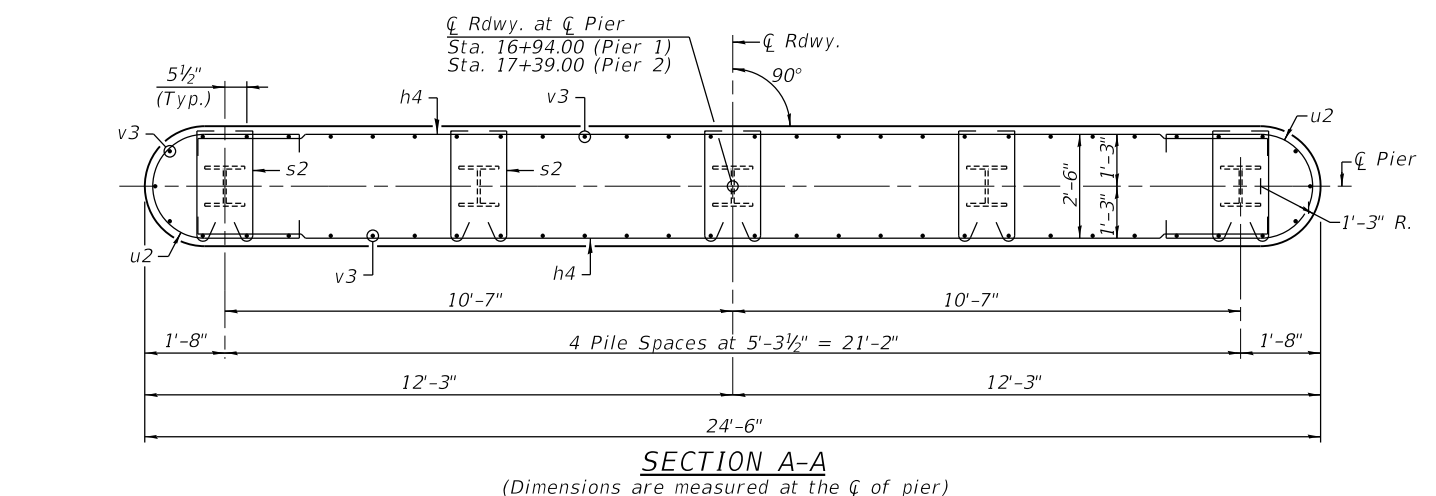
BAR	NO.	SIZE	LENGTH	SHAPE	
h4	48	#4	23'-8"	U	
p	16	#7	24'-8"	—	
p1	8	#5	24'-8"	—	
s1	48	#5	11'-7"	□	
s2	240	#4	3'-3"	U	
u1	16	#6	10'-7"	U	
u2	48	#5	8'-11"	U	
v3	116	#5	13'-8"	—	
Cofferdam Excavation				Cu. Yd.	136
Concrete Structures				Cu. Yd.	70.0
Reinforcement Bars				Pound	5230
Furnishing Steel Piles HP10x42				Foot	467
Driving Piles				Foot	467
Test Pile Steel HP 10x42				Each	1
Pile Shoes				Each	10

NOTES

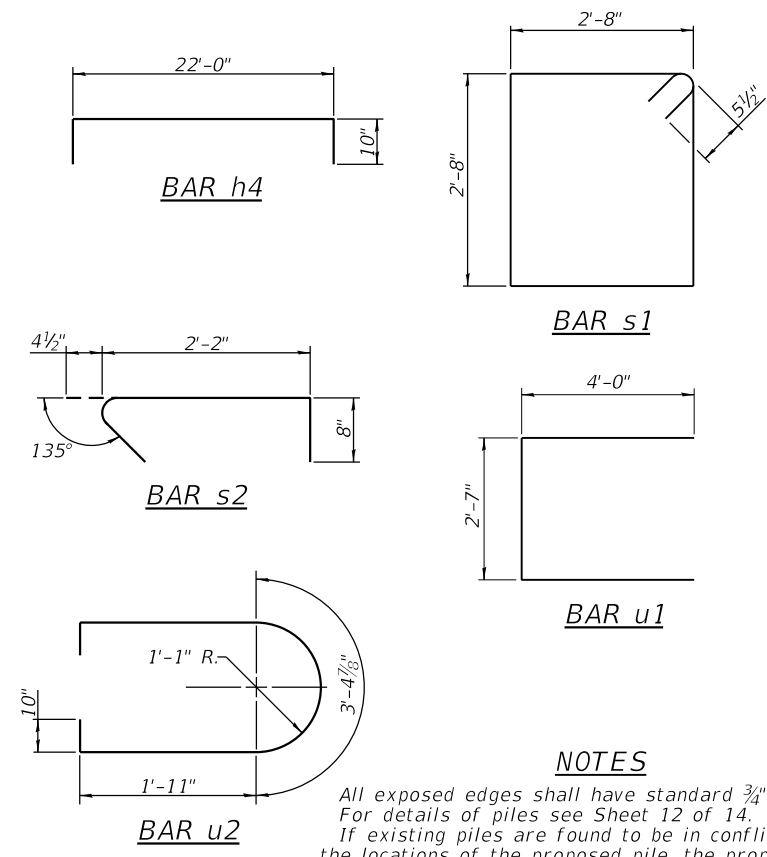
All exposed edges shall have standard 3/4" chamfer. For details of piles see Sheet 12 of 14. If existing piles are found to be in conflict with the locations of the proposed pile, the proposed piles may be moved up to 1'-0" along the centerline of the pier.



Reinforcement PLAN Dimensions



SECTION A-A (Dimensions are measured at the centerline of pier)



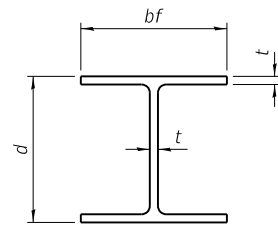
MODEL: 011 FILE NAME: V:\Sporfield\20\_V and K\_Rob\5316\_CH 33 over Joe's Creek\CADD\_Sheets\5316-Struct\Structure.dgn

USER NAME = CKohlrus	DESIGNED -	REVISED -
PLOT SCALE = 4.0000' / in.	DRAWN -	REVISED -
PLOT DATE = 1/15/2026	CHECKED -	REVISED -
	DATE -	REVISED -



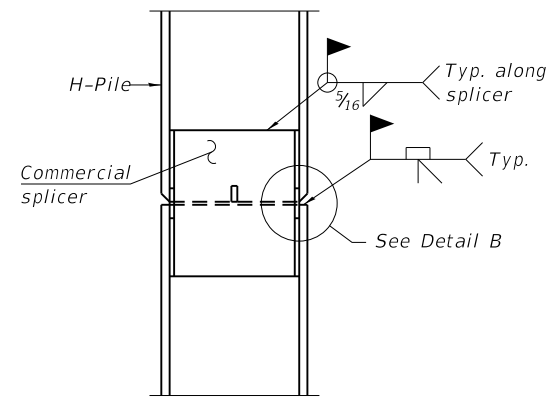
PIERS STRUCTURE NO. 059-3334			
SCALE: NONE	SHEET 11	OF 14 SHEETS	STA. TO STA.

C.H. RTE.	SECTION	COUNTY	TOTAL SHEETS	SHEET NO.
33	24-00109-00-BR	MACOUPIN	28	17
CONTRACT NO. 93856			ILLINOIS FED. AID PROJECT	

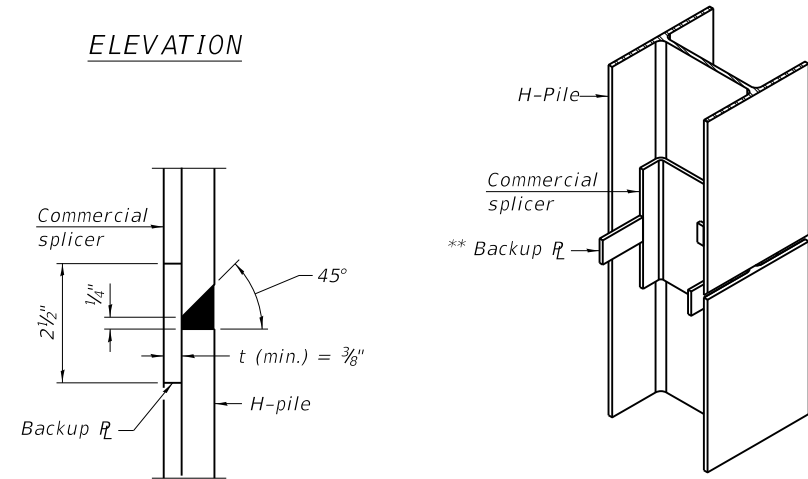


STEEL PILE TABLE

Designation	Depth d	Flange width bf	Web and Flange thickness t	Encasement diameter A
HP 18x181	18	18	1	36"
x157	17 3/4"	17 7/8"	7/8"	36"
x135	17 1/2"	17 3/4"	3/4"	36"
HP 16x183	16 1/2"	16 1/2"	1 1/8"	36"
x162	16 1/4"	16 1/8"	1"	36"
x141	16	16	7/8"	36"
x121	15 3/4"	15 7/8"	3/4"	36"
HP 14x117	14 1/4"	14 7/8"	1 3/16"	30"
x102	14"	14 3/4"	1 1/16"	30"
x89	13 7/8"	14 3/4"	5/8"	30"
x73	13 5/8"	14 5/8"	1/2"	30"
HP 12x84	12 1/4"	12 1/4"	1 1/16"	24"
x74	12 1/8"	12 1/4"	5/8"	24"
x63	12"	12 1/8"	1/2"	24"
x53	11 3/4"	12"	7/16"	24"
HP 10x57	10"	10 1/4"	9/16"	24"
x42	9 3/4"	10 1/8"	7/16"	24"
HP 8x36	8"	8 1/8"	7/16"	18"

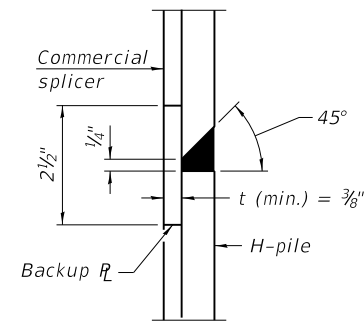


ELEVATION

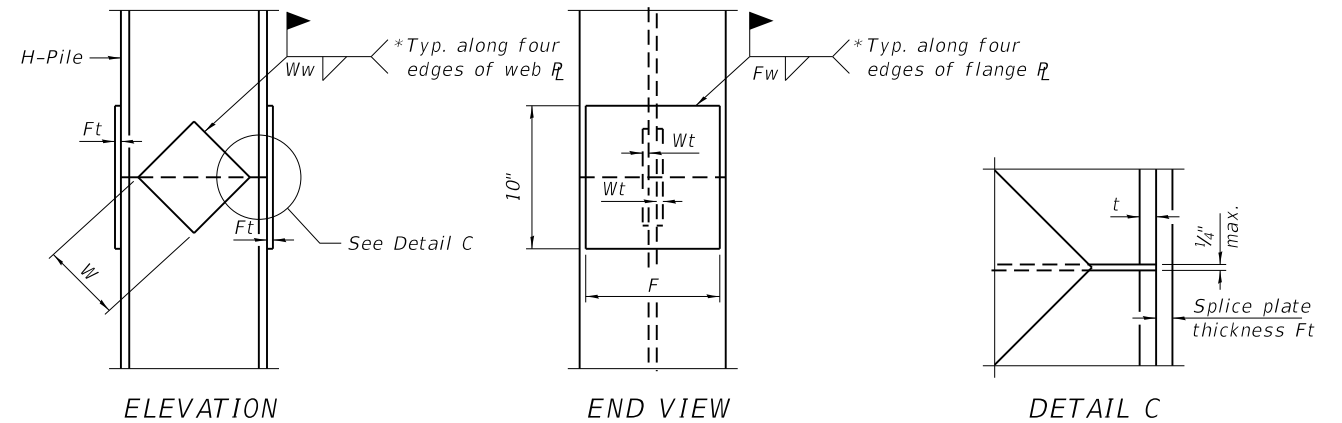


ISOMETRIC VIEW

WELDED COMMERCIAL SPLICE



DETAIL B



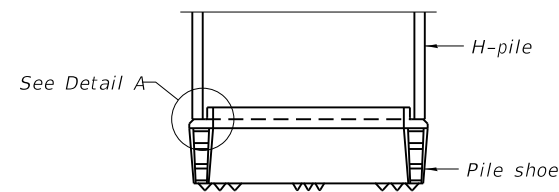
ELEVATION

END VIEW

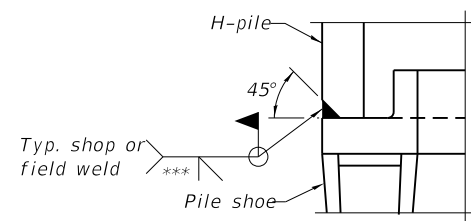
DETAIL C

Designation	F	Ft	Fw	W	Wt	Ww
HP 18x181	15 1/2"	1 1/2"	1"	9 1/2"	7/8"	3/4"
x157	15 1/4"	1 1/4"	1"	9 1/2"	7/8"	3/4"
x135	15 1/4"	1 1/4"	1"	9 1/2"	7/8"	3/4"
HP 16x183	13 3/4"	1 1/2"	1"	8 1/4"	7/8"	3/4"
x162	13 1/2"	1 1/2"	1"	8 1/4"	3/4"	5/8"
x141	13 1/2"	1 1/4"	7/8"	8 1/4"	3/4"	5/8"
x121	13 1/2"	1 1/4"	7/8"	8 1/4"	3/4"	5/8"
HP 14x117	12 1/2"	1 1/4"	7/8"	7 3/4"	5/8"	1/2"
x102	12 1/2"	1"	3/4"	7 3/4"	5/8"	1/2"
x89	12 1/2"	7/8"	1 1/16"	7 3/4"	5/8"	1/2"
x73	12 1/2"	3/4"	9/16"	7 3/4"	5/8"	1/2"
HP 12x84	10"	1"	1 1/16"	6 1/2"	5/8"	1/2"
x74	10"	7/8"	1 1/16"	6 1/2"	5/8"	1/2"
x63	10"	3/4"	1/2"	6 1/2"	1/2"	3/8"
x53	10"	3/4"	1/2"	6 1/2"	1/2"	3/8"
HP 10x57	8"	7/8"	9/16"	5 1/4"	1/2"	3/8"
x42	8"	3/4"	9/16"	5 1/4"	1/2"	3/8"
HP 8x36	6 3/4"	5/8"	7/16"	4"	1/2"	3/8"

WELDED PLATE FIELD SPLICE

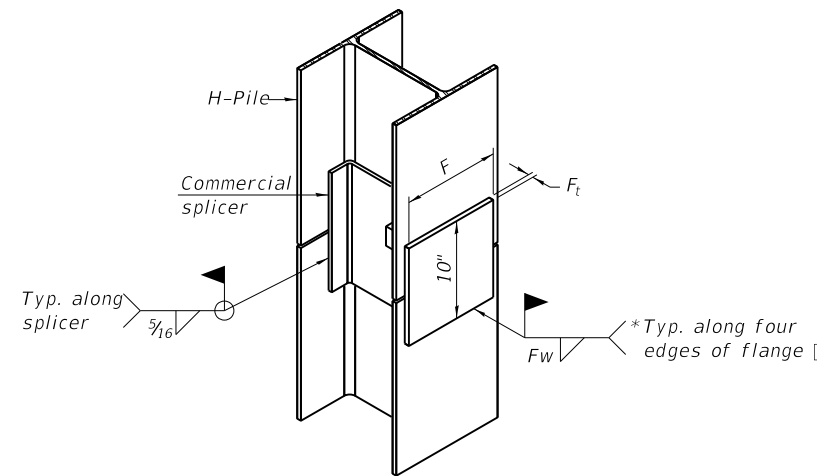


ELEVATION



DETAIL A

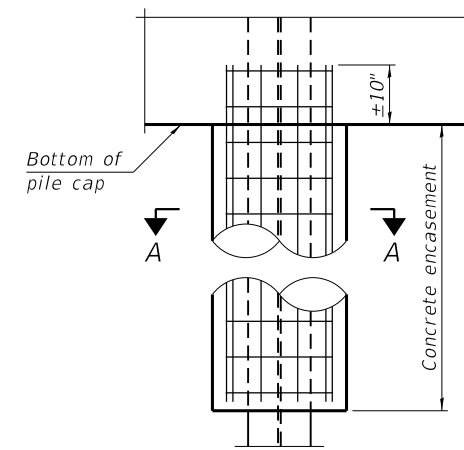
SHOE ATTACHMENT



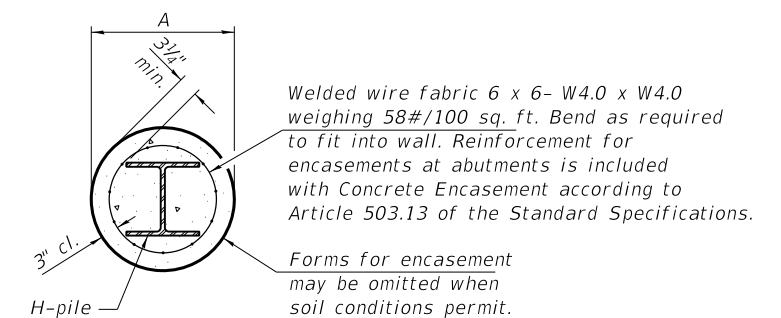
ISOMETRIC VIEW

WELDED COMMERCIAL SPLICE ALTERNATE

- \* Interrupt welds 1/4" from end of web and/or each flange.
- \*\* Remove portions of backup flange that extend outside the flanges.
- \*\*\* Weld size per pile shoe manufacturer (5/16" min.).



ELEVATION



SECTION A-A

INDIVIDUAL PILE CONCRETE ENCASUREMENT (when specified)

Note:  
The steel H-piles shall be according to AASHTO M270 Grade 50.

F-HP

4-4-2025

USER NAME = MFiaush
PLOT SCALE = 2.0000' / in.
PLOT DATE = 12/4/2025

DESIGNED -
DRAWN -
CHECKED -
DATE -

REVISED -
REVISED -
REVISED -
REVISED -



HP PILE DETAILS			
STRUCTURE NO. 059-3334			
SCALE: NONE	SHEET 12	OF 14 SHEETS	STA. TO STA.

C.H. RTE.	SECTION	COUNTY	TOTAL SHEETS	SHEET NO.
33	24-00109-00-BR	MACOUPIN	28	18
CONTRACT NO. 93856				
ILLINOIS				FED. AID PROJECT

MODEL: 012  
FILE NAME: V:\Sporfield\20 V and X files\5316 CH 33 over Joe's Creek\CADD\_Sheets\5316-HP-Structure.dgn

BRIDGE FOUNDATION SOIL BORING LOG

**MET Midwest Engineering and Testing, Inc.**

Project: Proposed Bridge Replacement  
CH 33 over Joes Creek  
Macoupin County, Illinois

Boring: B-1  
Page: 1 of 2  
Date of Boring: July 31, 2024  
Drilled By: Dusty Crump  
Checked By: Patrick A. Hahn  
MET Project No: C43083

Ground Water Elevation: when drilling: 502 ft. upon completion: 505 ft.	DEPTH (ft.)	BLOWS (6")	Qu (tsf)	MC (%)	Soil Description	DEPTH (ft.)	BLOWS (6")	Qu (tsf)	MC (%)
Ground Surface Elevation: 517 ft.					2" Asphalt				
	8		2.3	10	Brown silty CLAY (CL) with sand trace gravel	3		3.0	16
	6	7				5			
	3		-	14	Gray silty CLAY (CL) with sand trace gravel - Till	4		2.7	15
	2	3				6			
	2		-	17					
	2	4							
	2		-	24	Brown sandy SILT(SM-ML)	7		7.3	12
	2	1				10			
	1		-	20	Brown fine SAND (SP)	6		3.5P	22
	1	1				9			
	2		-	22					
	3		-	16	Brown fine-medium SAND (SP) little gravel	8		3.0P	17
	2	3				8			
	3		0.5P	17	Gray sandy CLAY (SC-CL)	21		-	6
	3	4				50			
	1		0.5P	18					
	1		0.5	16	Gray silty CLAY (CL) little sand				
	1	1							

N - Standard Penetration Test (SPT) = Sum of last two blow values in sample  
MC- Moisture Content - Percent of dry weight  
Qu- Unconfined Compressive Strength- tons per square foot (tsf)

Type Failure  
Qu test

B-Bulge  
S-Shear  
P-Penetrometer

BRIDGE FOUNDATION SOIL BORING LOG

**MET Midwest Engineering and Testing, Inc.**

Project: Proposed Bridge Replacement  
CH 33 over Joes Creek  
Macoupin County, Illinois

Boring: B-1  
Page: 1 of 2  
Date of Boring: July 31, 2024  
Drilled By: Dusty Crump  
Checked By: Patrick A. Hahn  
MET Project No: C43083

Ground Water Elevation: when drilling: 502 ft. upon completion: 505 ft.	DEPTH (ft.)	BLOWS (6")	Qu (tsf)	MC (%)	Soil Description	DEPTH (ft.)	BLOWS (6")	Qu (tsf)	MC (%)
Ground Surface Elevation: 517 ft.					Gray SHALE				
	55	29	-	6					
		50/3							
	60	32	-	7					
		50/4							
					END OF BORING @ 61.0 FEET				

N - Standard Penetration Test (SPT) = Sum of last two blow values in sample  
MC- Moisture Content - Percent of dry weight  
Qu- Unconfined Compressive Strength- tons per square foot (tsf)

Type Failure  
Qu test

B-Bulge  
S-Shear  
P-Penetrometer

MODEL: 013  
FILE NAME: \\S:\Borings\2024\08\_V and K\_10253316\_CH 33 over Joes Creek\CADD\_Sheets\316-Struct\Structure.dgn

USER NAME = MFiaush	DESIGNED -	REVISED -
PLOT SCALE = 2.0000' / in.	DRAWN -	REVISED -
PLOT DATE = 12/4/2025	CHECKED -	REVISED -
	DATE -	REVISED -



<b>BORING LOGS</b>			
<b>STRUCTURE NO. 059-3334</b>			
SCALE: NONE	SHEET 13	OF 14 SHEETS	STA. TO STA.

C.H. RTE.	SECTION	COUNTY	TOTAL SHEETS	SHEET NO.
33	24-00109-00-BR	MACOUPIN	28	19
			CONTRACT NO. 93856	
		ILLINOIS	FED. AID PROJECT	

BRIDGE FOUNDATION SOIL BORING LOG

**MET Midwest Engineering and Testing, Inc.**

Project: Proposed Bridge Replacement  
CH 33 over Joes Creek  
Macoupin County, Illinois

Boring: B-2  
Page: 1 of 2  
Date of Boring: July 31, 2024  
Drilled By: Dusty Crump  
Checked By: Patrick A. Hahn  
MET Project No: C43083

Ground Water Elevation: when drilling: 502 ft. upon completion: 505 ft.	DEPTH (ft.)	BLOWS (6")	Qu (tsf)	MC (%)	Soil Description	DEPTH (ft.)	BLOWS (6")	Qu (tsf)	MC (%)
Ground Surface Elevation: 517 ft.									
					3" Asphalt				
	8				Brown silty CLAY (CL) with sand trace gravel	3			
	11	4.5P	12	7		2.9	14		
	7								
	3				Dark brown silty CLAY (CL)	5			
	2	2.5P	13	2					
	2				Brown sandy SILT (SM-ML)	9			
	2			11		3.3	14		
	1				Brown fine silty SAND (SM)	2			
	2	0.75P	25	2					
	2				Brown fine-medium SAND (SP) little silt	2			
	2	1.0P	19	2					
	1				Brown fine-medium SAND (SP)	2			
	1			2					
	1				Brown fine-medium SAND (SP)	6			
	1			8		3.2	15		
	0				Brown fine-medium SAND (SP) little silt	8			
	1			10		3.1	16		
	1				Brown fine-medium SAND (SP)	5			
	1			5					
	3				Gray silty CLAY (CL) with sand and small gravel - Till	5			
	2			4		2.75P	16		
	5				Gray silty CLAY (CL) with sand and small gravel - Till	5			
	20			22					
	5				Gray SHALE	10			
	8	4.5P	15	13					
	7				Gray SHALE	10			
	11	3.5P	15	15		47	15		
	15					50/5			

N - Standard Penetration Test (SPT) = Sum of last two blow values in sample  
MC- Moisture Content - Percent of dry weight  
Qu- Unconfined Compressive Strength- tons per square foot (tsf)  
Type Failure  
Qu test  
B-Bulge  
S-Shear  
P-Penetrometer

BRIDGE FOUNDATION SOIL BORING LOG

**MET Midwest Engineering and Testing, Inc.**

Project: Proposed Bridge Replacement  
CH 33 over Joes Creek  
Macoupin County, Illinois

Boring: B-2  
Page: 1 of 2  
Date of Boring: July 31, 2024  
Drilled By: Dusty Crump  
Checked By: Patrick A. Hahn  
MET Project No: C43083

Ground Water Elevation: when drilling: 502 ft. upon completion: 505 ft.	DEPTH (ft.)	BLOWS (6")	Qu (tsf)	MC (%)	Soil Description	DEPTH (ft.)	BLOWS (6")	Qu (tsf)	MC (%)
Ground Surface Elevation: 517 ft.									
					Gray SHALE				
	55				Gray SHALE	22			
				43		-	12		
				50/4					
	60				END OF BORING @ 61.5 FEET	27			
				39		-	12		
						50/3			

N - Standard Penetration Test (SPT) = Sum of last two blow values in sample  
MC- Moisture Content - Percent of dry weight  
Qu- Unconfined Compressive Strength- tons per square foot (tsf)  
Type Failure  
Qu test  
B-Bulge  
S-Shear  
P-Penetrometer

MODEL: 014  
FILE NAME: V:\Sporfield\ZD\_V and K\_10565316\_CH\_33 over Joes Creek\CADD\_Sheets\316-Struct.dgn

USER NAME = MFlaush	DESIGNED -	REVISED -
PLOT SCALE = 2.0000' / in.	DRAWN -	REVISED -
PLOT DATE = 12/4/2025	CHECKED -	REVISED -
	DATE -	REVISED -



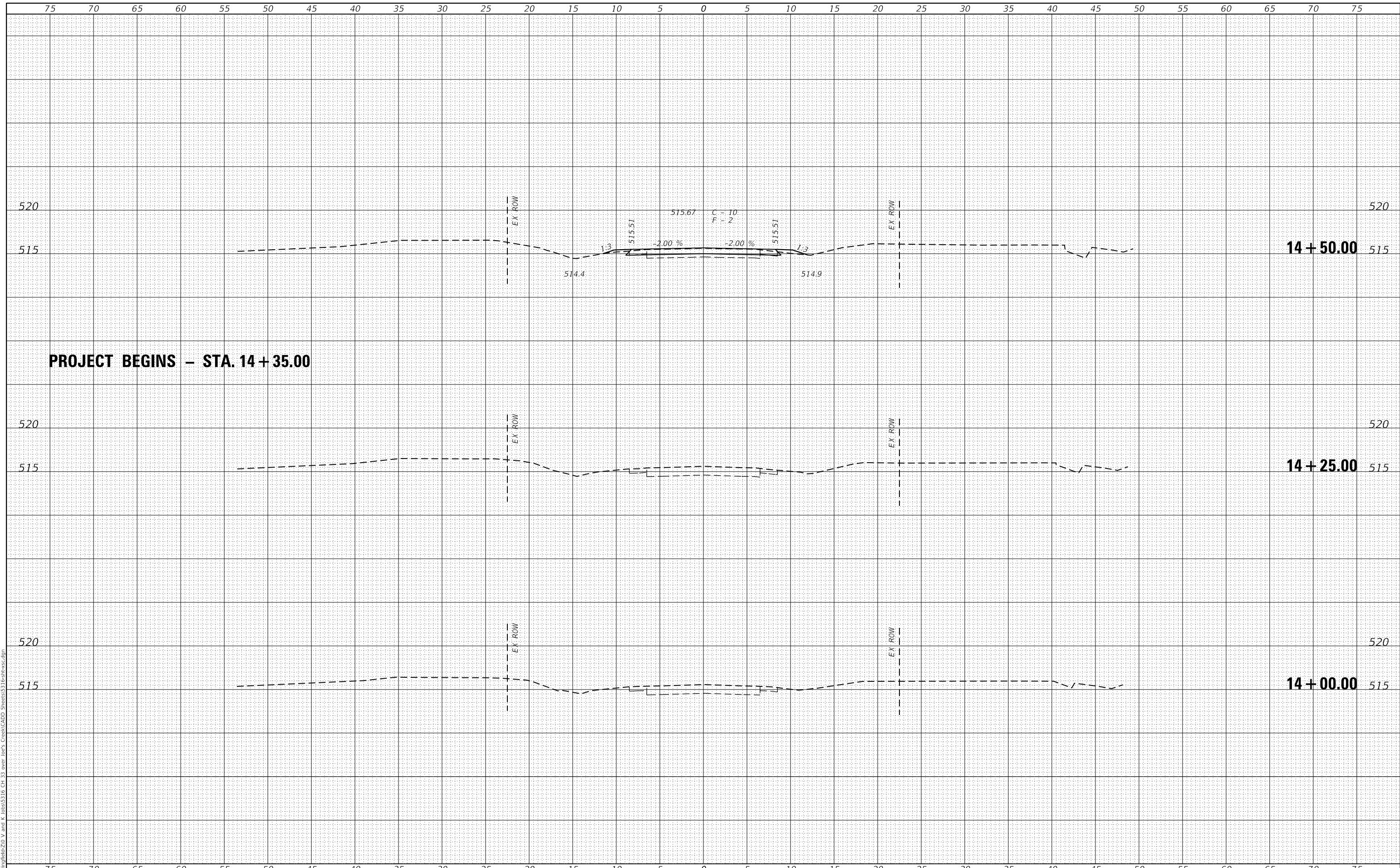
<b>BORING LOGS</b>	
<b>STRUCTURE NO. 059-3334</b>	
SCALE: NONE	SHEET 14 OF 14 SHEETS
STA.	TO STA.

C.H. RTE.	SECTION	COUNTY	TOTAL SHEETS	SHEET NO.
33	24-00109-00-BR	MACOUPIN	28	20
CONTRACT NO. 93856				
ILLINOIS FED. AID PROJECT				

DATE	
BY	
SURVEYED	
PLOTTED	
TEMPLATE	
AREAS CHECKED	
FINAL SURVEY	
NOTE BOOK	
NO.	

DATE	
BY	
SURVEYED	
PLOTTED	
TEMPLATE	
AREAS CHECKED	
ORIGINAL SURVEY	
NOTE BOOK	
NO.	

MODEL: Definit  
 FILE NAME: V:\proj\1409-00-00\1409-00-00-00\Cross\1409-00-00-00-00.dgn



**PROJECT BEGINS - STA. 14 + 35.00**

USER NAME = MFlaugh	DESIGNED -	REVISED -
	DRAWN -	REVISED -
PLOT SCALE = 10.0000' / in.	CHECKED -	REVISED -
PLOT DATE = 12/4/2025	DATE -	REVISED -



<b>CROSS SECTIONS</b>			
SCALE: 1" = 5'	SHEET 1	OF 8 SHEETS	STA. 14+00.00 TO STA. 14+50.00

C.H. RTE.	SECTION	COUNTY	TOTAL SHEETS	SHEET NO.
33	24-00109-00-BR	MACOUPIN	28	21
				CONTRACT NO. 93856
				ILLINOIS FED. AID PROJECT



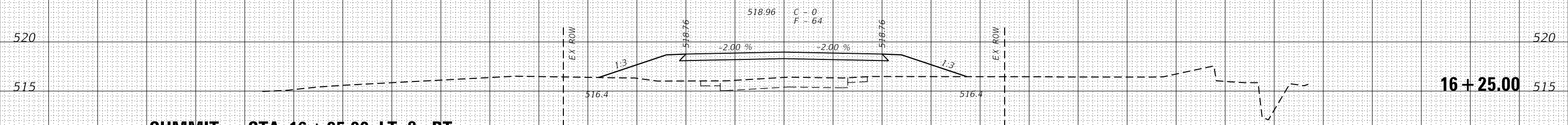
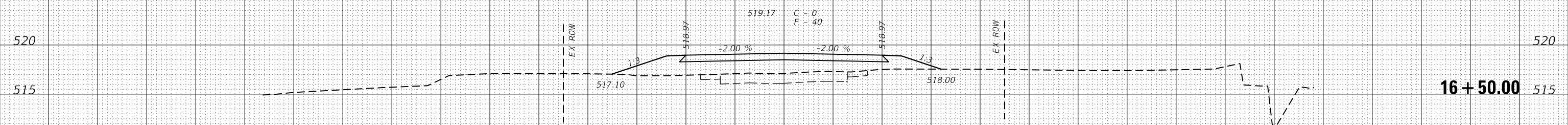
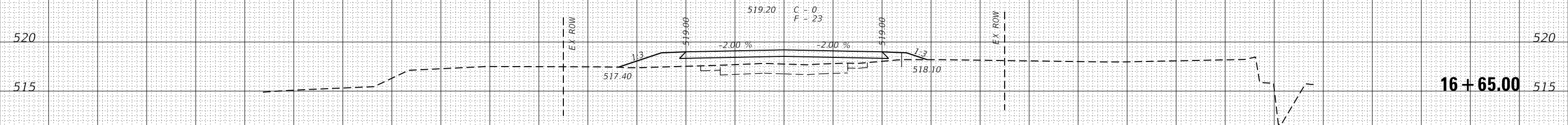


DATE	
BY	
SURVEYED	
PLOTTED	
TEMPLATE	
AREAS CHECKED	
FINISH	
NO. SURVEY	
NOTE BOOK	
NO.	

DATE	
BY	
SURVEYED	
PLOTTED	
TEMPLATE	
AREAS CHECKED	
ORIGINAL	
NO. SURVEY	
NOTE BOOK	
NO.	

MODEL: Definit  
 FILE NAME: V:\proj\16+25\16+25.dgn

**BK. S. ABUT. - STA. 16 + 68.00**



**SUMMIT - STA. 16 + 25.00 LT. & RT.**

USER NAME = MFlaush	DESIGNED -	REVISED -
	DRAWN -	REVISED -
PLOT SCALE = 10.0000' / in.	CHECKED -	REVISED -
PLOT DATE = 12/4/2025	DATE -	REVISED -



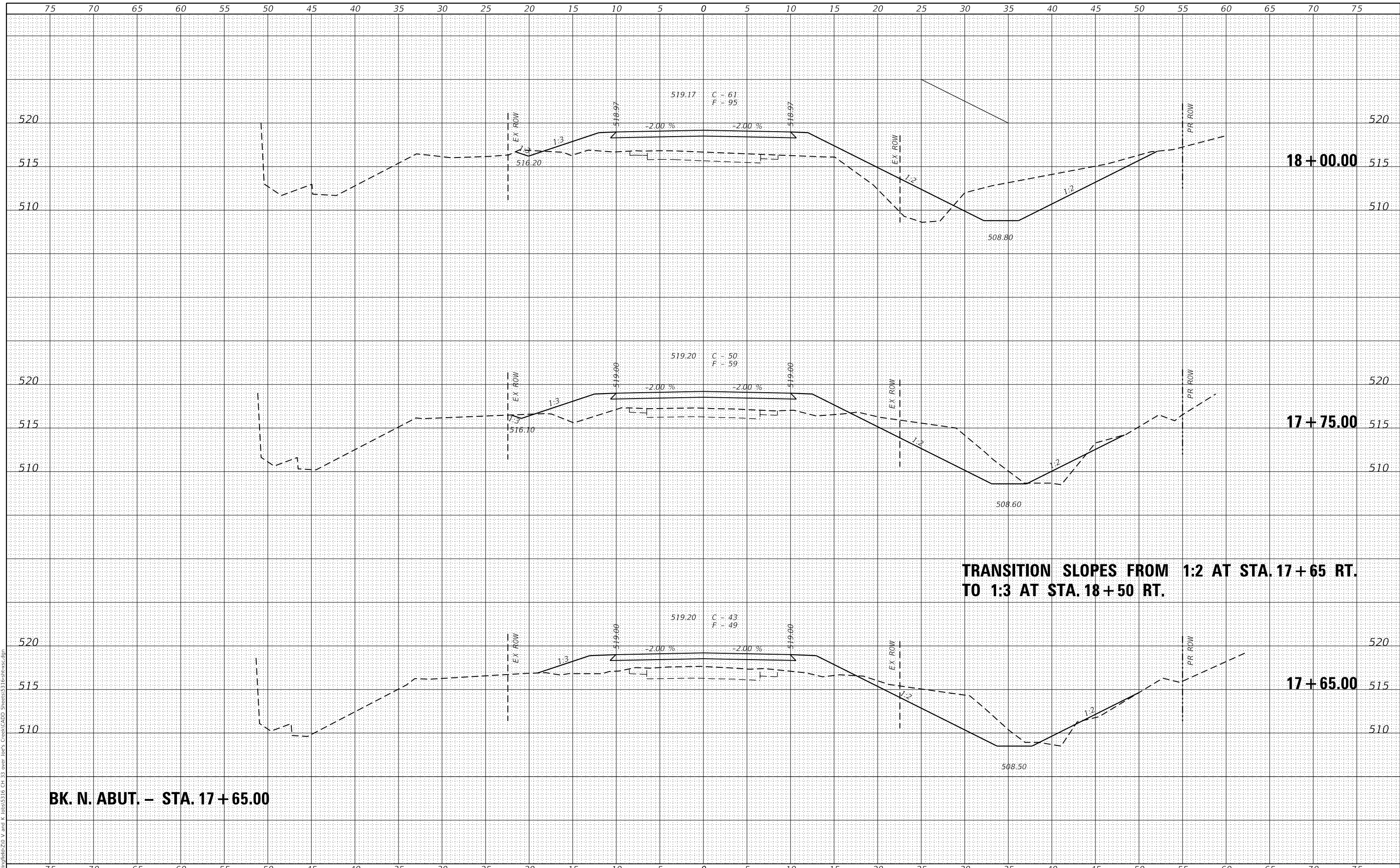
<b>CROSS SECTIONS</b>			
SCALE: 1" = 5'	SHEET 4	OF 8 SHEETS	STA. 16+25.00 TO STA. 16+65.00

C.H. RTE.	SECTION	COUNTY	TOTAL SHEETS	SHEET NO.
33	24-00109-00-BR	MACOUPIN	28	24
CONTRACT NO. 93856				
ILLINOIS		FED. AID PROJECT		

DATE	
BY	
FINISHED SURVEY	
PLOTTED	
TEMPLATE	
AREAS CHECKED	
NO.	

DATE	
BY	
ORIGINAL SURVEY	
PLOTTED	
TEMPLATE	
AREAS CHECKED	
NO.	

MODEL: Default  
FILE NAME: V:\proj\1762\1762.dwg



18 + 00.00

17 + 75.00

TRANSITION SLOPES FROM 1:2 AT STA. 17 + 65 RT.  
TO 1:3 AT STA. 18 + 50 RT.

17 + 65.00

BK. N. ABUT. - STA. 17 + 65.00

USER NAME = MFlaush	DESIGNED -	REVISED -
	DRAWN -	REVISED -
PLOT SCALE = 10.0000' / in.	CHECKED -	REVISED -
PLOT DATE = 12/4/2025	DATE -	REVISED -



CROSS SECTIONS			
SCALE: 1" = 5'	SHEET 5	OF 8 SHEETS	STA. 17+65.00 TO STA. 18+00.00

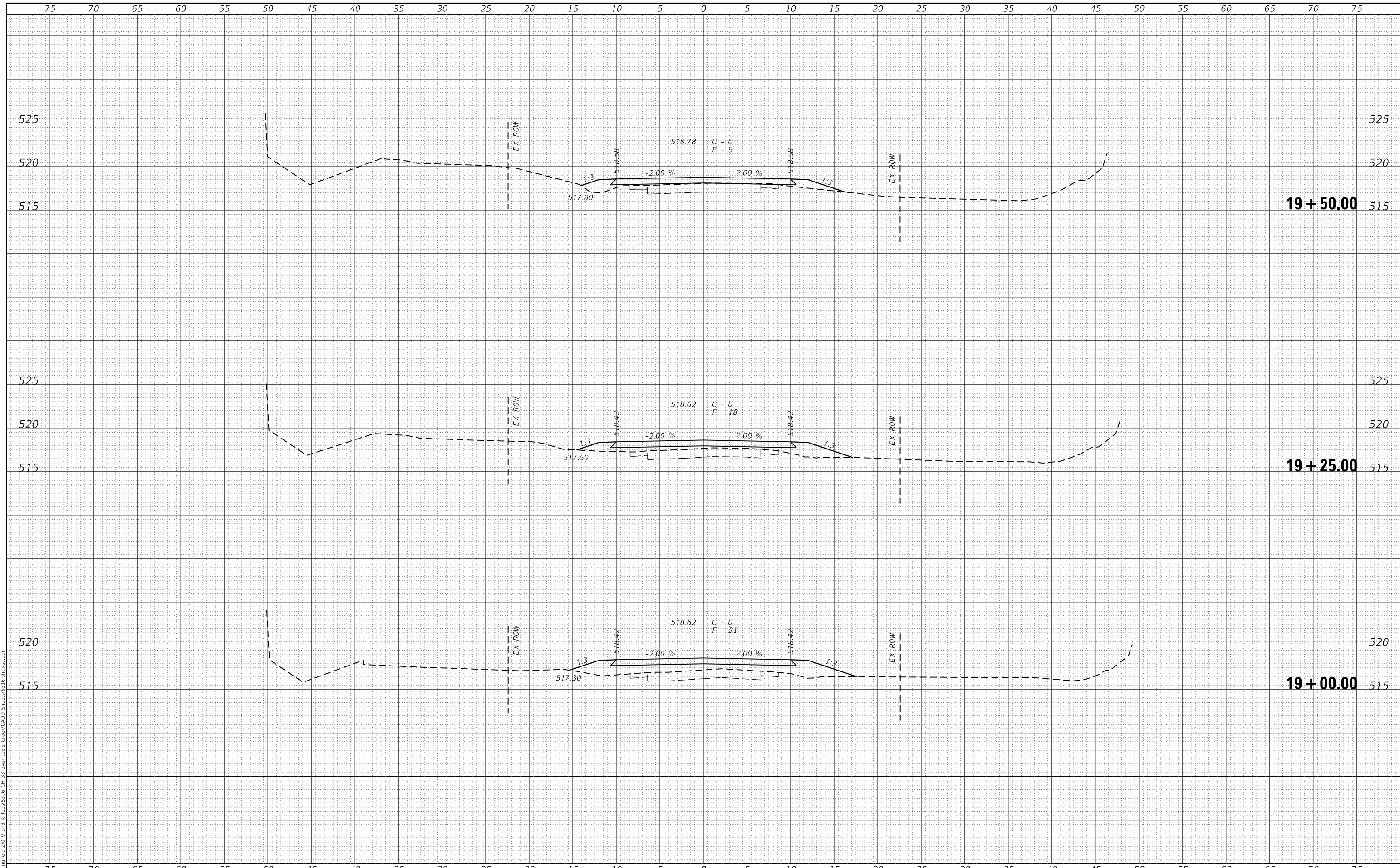
C.H. RTE.	SECTION	COUNTY	TOTAL SHEETS	SHEET NO.
33	24-00109-00-BR	MACOUPIN	28	25
				CONTRACT NO. 93856
ILLINOIS FED. AID PROJECT				



DATE	
BY	
FINAL SURVEY	SURVEYED
NOTE BOOK	PLOTTED
NO.	TEMPLATE
	AREAS CHECKED

DATE	
BY	
ORIGINAL SURVEY	SURVEYED
NOTE BOOK	PLOTTED
NO.	TEMPLATE
	AREAS CHECKED

MODEL: Default  
 FILE NAME: V:\proj\19000\19000.dwg  
 CH 33 over Job's Creek/CADD Sheets\3319-19000.dwg



USER NAME = MFlaush	DESIGNED -	REVISED -
	DRAWN -	REVISED -
PLOT SCALE = 10.0000' / in.	CHECKED -	REVISED -
PLOT DATE = 12/4/2025	DATE -	REVISED -



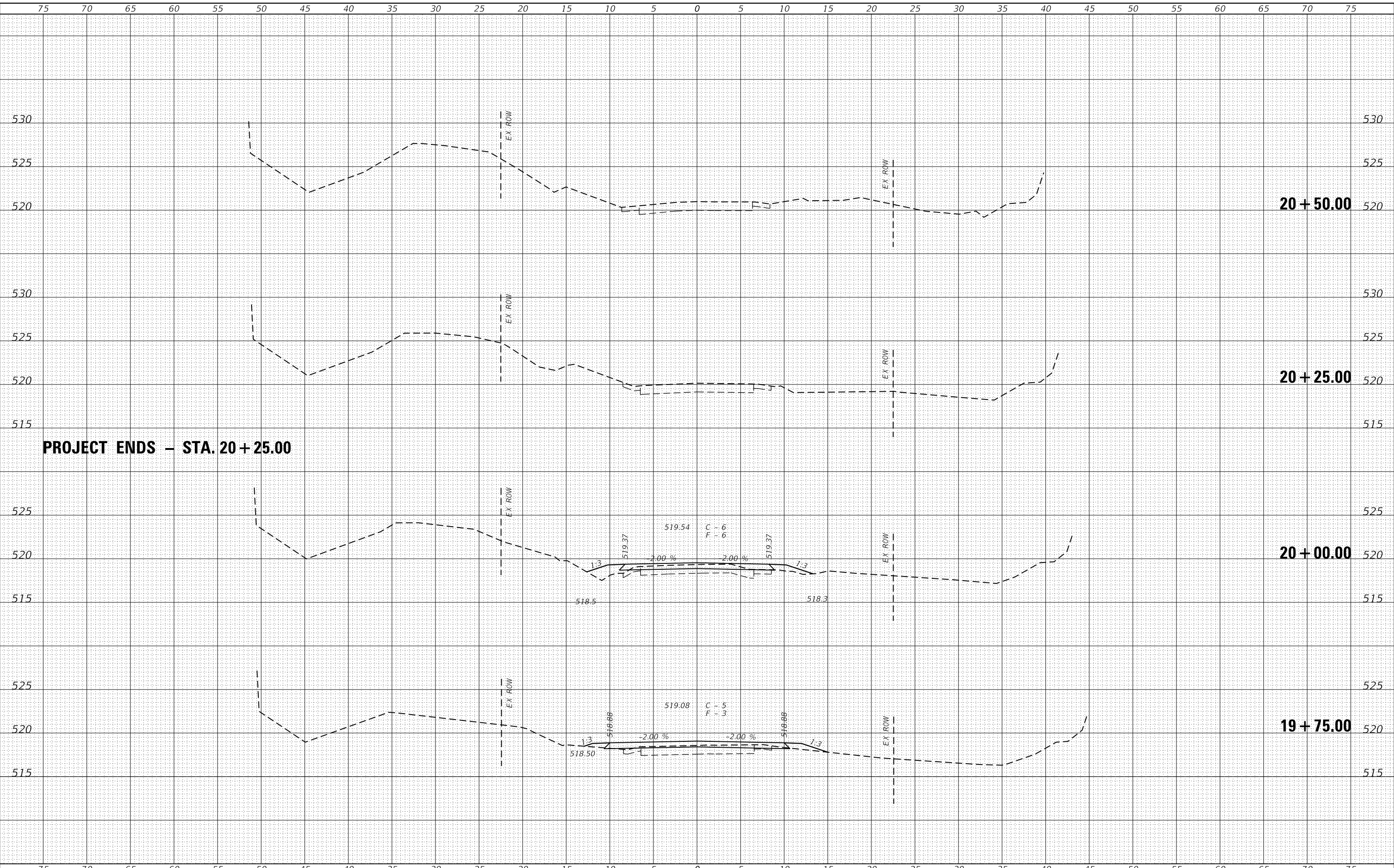
<b>CROSS SECTIONS</b>			
SCALE: 1" = 5'	SHEET 7	OF 8 SHEETS	STA. 19+00.00 TO STA. 19+50.00

C.H. RTE.	SECTION	COUNTY	TOTAL SHEETS	SHEET NO.
33	24-00109-00-BR	MACOUPIN	28	27
				CONTRACT NO. 93856
		ILLINOIS	FED. AID PROJECT	

DATE	
BY	
SURVEYED	
PLOTTED	
TEMPLATE	
AREAS CHECKED	
FINISH	
NO. 1	
NO. 2	
NO. 3	
NO. 4	
NO. 5	
NO. 6	
NO. 7	
NO. 8	
NO. 9	
NO. 10	

DATE	
BY	
SURVEYED	
PLOTTED	
TEMPLATE	
AREAS CHECKED	
FINISH	
NO. 1	
NO. 2	
NO. 3	
NO. 4	
NO. 5	
NO. 6	
NO. 7	
NO. 8	
NO. 9	
NO. 10	

MODEL: Definit  
 FILE NAME: V:\p\10053316 CH 33 over Joe's Creek\CADD Sheets\3316-shrvcsc.dgn



**PROJECT ENDS - STA. 20 + 25.00**

USER NAME = MFlaush	DESIGNED -	REVISED -
	DRAWN -	REVISED -
PLOT SCALE = 10.0000' / in.	CHECKED -	REVISED -
PLOT DATE = 12/4/2025	DATE -	REVISED -



<b>CROSS SECTIONS</b>			
SCALE: 1" = 5'	SHEET 8	OF 8 SHEETS	STA. 19+75.00 TO STA. 20+50.00

C.H. RTE.	SECTION	COUNTY	TOTAL SHEETS	SHEET NO.
33	24-00109-00-BR	MACOUPIN	28	28
				CONTRACT NO. 93856
				ILLINOIS FED. AID PROJECT