

| | | | | | | |
|----------------------------|--|----------|--------------------|----------|--------------|-----------|
| *FAI 55, FAP 663, FAU 7998 | | RTE. | SECTION | COUNTY | TOTAL SHEETS | SHEET NO. |
| | | D6 RS | SPFLD 2026 | SANGAMON | 15 | 1 |
| | | ILLINOIS | CONTRACT NO. 72E86 | | | |

07-31-2026 LETTING ITEM 054

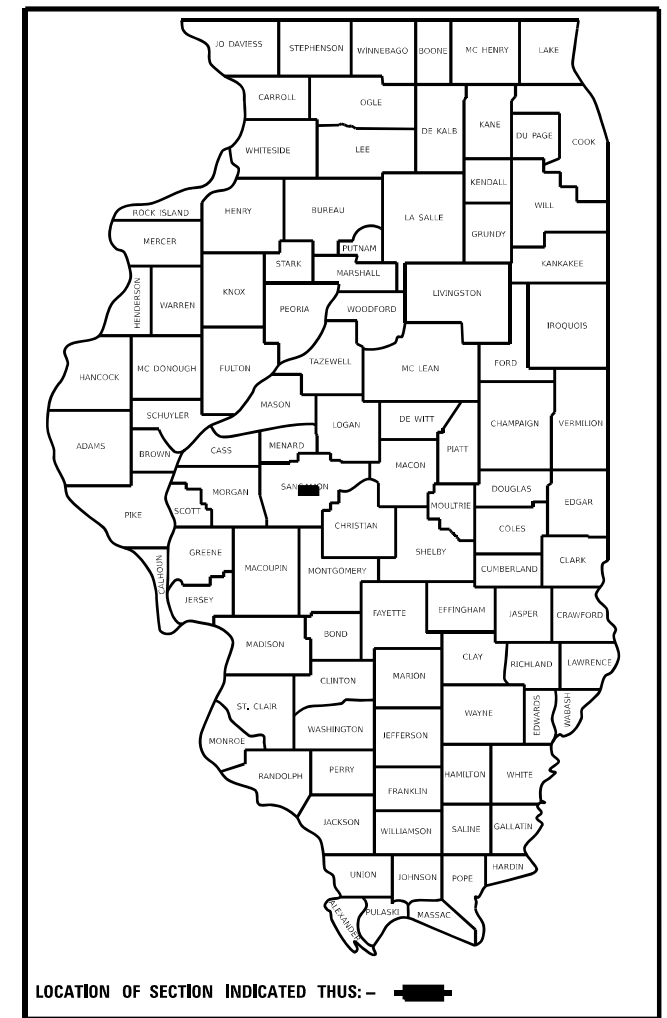
**STATE OF ILLINOIS
DEPARTMENT OF TRANSPORTATION**

**PROPOSED
HIGHWAY PLANS**

**FAU ROUTE 7998
(STEVENSON DR, E LAKE SHORE DR)
SECTION D6 RS SPFLD 2026
PROJECT
SMART OVERLAY, MISCELLANEOUS
SANGAMON COUNTY**

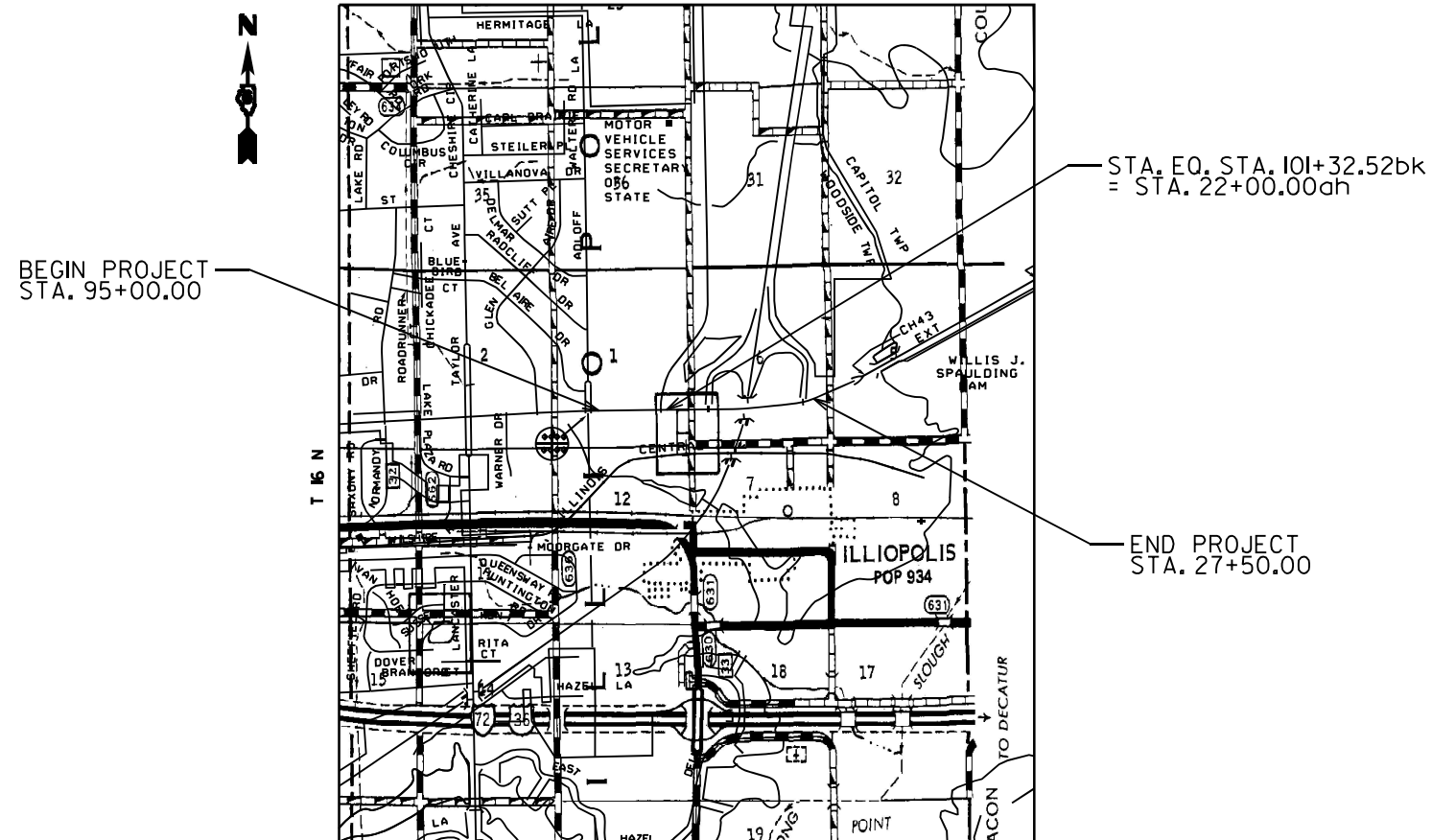
FOR INDEX OF SHEETS, SEE SHEET NO. 2

D-96-040-26

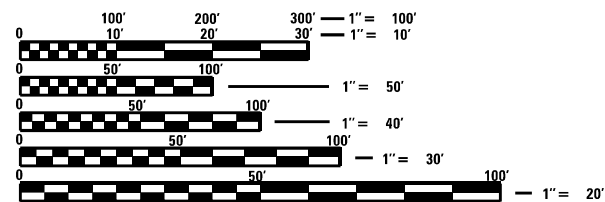


C-96-077-26

R 12W



ADT = 7,500 (2022)
SU = 150 (2022)
MU = 50 (2022)



FULL SIZE PLANS HAVE BEEN PREPARED USING STANDARD ENGINEERING SCALES. REDUCED SIZED PLANS WILL NOT CONFORM TO STANDARD SCALES. IN MAKING MEASUREMENTS ON REDUCED PLANS, THE ABOVE SCALES MAY BE USED.

J.U.L.I.E.
JOINT UTILITY LOCATION INFORMATION FOR EXCAVATORS
1-800-892-0123
OR 811

PROJECT ENGINEER: MIKE HAMBY (217)524-7765
PROJECT MANAGER TIM SHARP (217)524-9160

CONTRACT NO. 72E86

STATE OF ILLINOIS
DEPARTMENT OF TRANSPORTATION

SUBMITTED May 15, 2026
Teresa C. Price
REGIONAL ENGINEER

June 26, 2026
[Signature]
ENGINEER OF DESIGN AND ENVIRONMENT

June 26, 2026
[Signature]
DIRECTOR OF HIGHWAYS PROJECT IMPLEMENTATION

**PRINTED BY THE AUTHORITY
OF THE STATE OF ILLINOIS**

INDEX OF SHEETS

| SHEET NO. | DESCRIPTION |
|-----------|--|
| 1. | COVER SHEET |
| 2. | INDEX OF SHEETS, STANDARDS, GENERAL NOTES & SIGNATURES |
| 3. | SUMMARY OF QUANTITIES |
| 4. | SCHEDULES |
| 5. | LOCATION MAP |
| 6-8. | PLANS |
| 9-11. | PAVEMENT MARKING PLANS |
| 12-14. | TYPICAL SECTION |
| 15. | VIDEO DETECTION SYSTEM |

STANDARDS

| STANDARD NO. | DESCRIPTION |
|--------------|--|
| 701101-05 | OFF-ROAD OPERATIONS, MULTILANE, 15' O 24" FROM PAVEMENT EDGE |
| 701106-02 | OFF-RD OPERATIONS, MULTILANE, MORE THAN 15' AWAY |
| 701456-05 | PARTIAL EXIT RAMP CLOSURE FREEWAY/EXPRESSWAY |
| 701601-09 | URBAN LANE CLOSURE, MULTILANE, 1W OR 2W WITH NONTRAVERSABLE MEDIAN |
| 701701-10 | URBAN LANE CLOSURE, MULTILANE, INTERSECTION |
| 701901-11 | TRAFFIC CONTROL DEVICES |

THE FOLLOWING RATES OF APPLICATION HAVE BEEN ASSUMED IN CALCULATING PLAN QUANTITIES:

| | |
|----------------------------------|---|
| BITUMINOUS MATERIALS (TACK COAT) | 0.05 LBS/SQ FT (EX HMA, MILLED SURFACE) |
| HMA SURFACE/BINDER(112 LBS) | 0.056 TON/SQUARE YARD - INCH (MIX A-C) |

Only the District 6 engineer assigned to the project, the RE or RT, will move the signals to manual flash condition and return the signals to "normal" operation. This shall not be delegated. In doing so, the RE or RT will have full responsibility for function of those signals and any issue that may arise from his/her actions.

The RE or RT shall notify by email:

brian.fry@illinois.gov, dale.hebenstreit@illinois.gov, or michael.hamby@illinois.gov at least the day prior to the planned traffic signal flash condition.

The contractor shall not have access to the signal cabinet.

If you have any questions or require additional information, please call Michael Hamby at 217-556-4643.

| STATE OF ILLINOIS DEPARTMENT OF TRANSPORTATION DIVISION OF HIGHWAYS DISTRICT 6 | |
|---|---|
| EXAMINED | May 15, 2026 <i>J.C. DeLeon</i> ENGINEER OF OPERATIONS |
| EXAMINED | May 15, 2026 <i>R.P. Smith</i> ENGINEER OF PROJECT IMPLEMENTATION |
| EXAMINED | May 15, 2026 <i>M.V.</i> ENGINEER OF PROGRAM DEVELOPMENT |

| MIXTURE REQUIREMENTS | |
|---|--------------------|
| MIXTURE USE(S): | HMA SURFACE COURSE |
| PG: | SBS PG70-22 |
| DESIGN AIR VOIDS: | 4.0% @ N90 |
| MIXTURE COMPOSITION: | IL-9.5 |
| FRICTION AGGREGATE: | MIX D |
| QUALITY MANAGEMENT: | QC/QA |
| SUBLOT SIZE: | N/A |
| MTD REQUIRED: | YES |
| DENSITY NOTE: NUCLEAR GAUGE WILL BE USED FOR DENSITY VERIFICATION BY THE ENGINEER ON QC/QA PROJECTS | |

REV - MS

•FAI 55, FAP 663, FAU 7998

MODEL: D:\draft\...
 FILE NAME: ...
 PROJECT: ...
 USER: ...

| | | |
|---------------------------|------------|-----------|
| USER NAME = timothy.sharp | DESIGNED - | REVISED - |
| | DRAWN - | REVISED - |
| PLOT SCALE = \$SCALE\$ | CHECKED - | REVISED - |
| PLOT DATE = 5/13/2026 | DATE - | REVISED - |

STATE OF ILLINOIS
DEPARTMENT OF TRANSPORTATION

INDEX OF SHEETS, HIGHWAY STANDARDS,
GENERAL NOTES, & SIGNATURES

SCALE: SHEET OF SHEETS STA. TO STA.

| ROUTE | SECTION | COUNTY | TOTAL SHEETS | SHEET NO. |
|---------------------------|-----------------|----------|--------------------|-----------|
| * | D6 RS SPFLD2026 | SANGAMON | 14 | 2 |
| | | | CONTRACT NO. 72E86 | |
| ILLINOIS FED. AID PROJECT | | | | |

PAVEMENT MARKING SCHEDULE

| LOCATION | | MODIFIED URETHANE PAVEMENT MARKING LINE 5 | | | MODIFIED URETHANE PAVEMENT MARKING LINE 6 | MODIFIED URETHANE PAVEMENT MARKING LINE 8 | MODIFIED URETHANE PAVEMENT MARKING LINE 12 | PREFORMED PLASTIC PAVEMENT MARKING, TY B - LINE 5 | PREFORMED PLASTIC PAVEMENT MARKING, TY B - LINE 6 | PREFORMED PLASTIC PAVEMENT MARKING, TY B - LINE 24 | PREFORMED PLASTIC PAVEMENT MARKING, TY B - LETTERS AND SYMBOLS | RAISED REFLECTIVE PAVEMENT MARKERS | RAISED REFLECTIVE PAVEMENT MARKER REMOVAL | GROOVING FOR RECESSED PAVEMENT MARKING, LETTERS AND SYMBOLS | GROOVING FOR RECESSED PAVEMENT MARKING 6" | GROOVING FOR RECESSED PAVEMENT MARKING 7" | GROOVING FOR RECESSED PAVEMENT MARKING 9" | GROOVING FOR RECESSED PAVEMENT MARKING 13" | GROOVING FOR RECESSED PAVEMENT MARKING 25" |
|----------------------------|-----------|---|-------------|---------------|---|---|--|---|---|--|--|------------------------------------|---|---|---|---|---|--|--|
| STATION | TO | YELLOW | WHITE | DOUBLE YELLOW | WHITE | WHITE | WHITE | SKIP-DASH WHITE | WHITE | WHITE | SQ FT | EACH | EACH | SQ FT | FOOT | FOOT | FOOT | FOOT | FOOT |
| 95+00.00 | 95+50.00 | | 100 | 100 | | | | | | | | 1 | 1 | | 140 | | | | |
| 95+00.00 | 95+50.00 | | | | | | | | | | | | | | 100 | | | | |
| 95+00.00 | 95+50.00 | | | | | | | | | | 6.5 | 11 | 11 | 6.5 | | 50 | | | |
| 95+50.00 | 99+62.00 | | 412 | | | | | | | | 206 | | | | 818 | | | | |
| 95+50.00 | 97+19.00 | | | 676 | | | | | | | | | | | 676 | | | | |
| 97+19.00 | 99+62.00 | 486 | | | | | | | | | 243 | | | 39 | 486 | 243 | | | |
| 97+33.00 | 99+10.00 | | | | | | | | | | 177 | | | | | 177 | | | |
| 99+62.00 | 100+61.00 | | | | | | | | | | 37 | | | | | | | | 37 |
| 100+61.00 | 101+32.52 | 144 | 144 | | | | | | | | 62 | | | 13 | 324 | 135 | | | 62 |
| STA. EQ. 10132.52bk = 2200 | | | | | | | | | | | | | | | | | | | |
| 22+00.00 | 22+25.00 | 50 | 50 | | | | | | | | | 1 | 1 | | | | | | |
| 22+50.00 | 25+60.00 | 632 | 632 | | | | | | | | | 8 | 8 | | 113 | | | | |
| 22+50.00 | 23+70.00 | | | | | | | | | | | | | 13 | | | | | |
| 23+36.00 | 25+66.00 | | | | | | | | | | 123 | | | 19.5 | | 231 | | | |
| 25+66.00 | 26+73.00 | 180 | 180 | | 298 | 96 | | | | | 36 | 36 | 13 | | 360 | | 298 | 96 | 36 |
| 25+66.00 | 26+73.00 | | 107 | | | | | | | | 37 | | | | | | | | 37 |
| 26+73.00 | 27+50.00 | | | | | | | | | | | | | | 107 | | | | |
| 26+73.00 | 27+50.00 | | | | | | | | | | | | | | 40 | | | | |
| 34+91.00 | 35+89.00 | 98 | 98 | | | | | | | | | | | | | | | | |
| 34+91.00 | 35+89.00 | 150 | 150 | | 140 | 225 | 100 | | | | 50 | 195 | | | 248 | 195 | | | |
| 37+13.00 | 37+50.00 | | | | | | | | | | | | | | 300 | 140 | 225 | 100 | 57 |
| 37+13.00 | 37+50.00 | 37 | 37 | | | | | | | | 10 | 1 | 1 | | 10 | | | | |
| 37+13.00 | 37+50.00 | | | | | | | | | | 10 | 1 | 1 | | 84 | | | | |
| TOTALS | | 1777 | 1730 | 956 | 140 | 523 | 196 | 563 | 1154 | 265 | 104 | 30 | 30 | 104 | 5026 | 1294 | 523 | 196 | 265 |

| STA. | TO | STA. | LENGTH | SQ FT TAKEN FROM PLANS | | BITUMINOUS MATERIALS (TACK COAT) | | HMA SUR. REMOVAL 1 1/2" | HMA SUR. COURSE, IL-9.5, MIX "D", N50 | | |
|-------------------------------|----|-----------|--------|------------------------|--------------|----------------------------------|-------------|-------------------------|---------------------------------------|------------|-----|
| | | | | AREA | SQ FT | RATE | POUND | SQ YD | DEPTH | RATE | TON |
| | | | FT | | | | | | INCH | TON/SQ YD | TON |
| 95+00.00 | TO | 101+32.52 | 633.00 | 38330 | 0.05 | 1917 | 4259 | 1.5 | 0.056 | 358 | |
| STA. EQ. 101+32.52 = 22+00.00 | | | | | | | | | | | |
| 22+00.00 | TO | 27+50.00 | 550.00 | 41340 | 0.05 | 2067 | 4593 | 1.5 | 0.056 | 386 | |
| 34+91.50 | TO | 37+50.00 | 259.00 | 13660 | 0.05 | 683 | 1518 | 1.5 | 0.056 | 128 | |
| TOTALS | | | | 633 | 93330 | - | 4667 | 10370 | - | 872 | |

| LOCATION | STA. | WIDTH | | LENGTH | SQ YD |
|-------------------------------|----------|-------|----|--------|--------------|
| | | FT | FT | | |
| LEFT | 95+00.00 | 26 | 5 | 14.4 | |
| RIGHT | 95+00.00 | 26 | 5 | 14.4 | |
| RIGHT | 99+84.17 | 250 | 5 | 138.9 | |
| STA. EQ. 101+32.52 = 22+00.00 | | | | | |
| LEFT | 26+48.95 | 17 | 5 | 9.4 | |
| LEFT | 27+00.00 | 29 | 5 | 16.1 | |
| RIGHT | 27+50.00 | 26 | 5 | 14.4 | |
| LEFT | 34+91.50 | 24 | 5 | 13.3 | |
| LEFT | 36+16.34 | 24 | 5 | 13.3 | |
| LEFT | 36+80.00 | 120 | 5 | 66.7 | |
| LEFT | 36+99.20 | 24 | 5 | 13.3 | |
| LEFT | 37+50.00 | 29 | 5 | 16.1 | |
| TOTAL | | | | | 330.6 |

| SHORT TERM PAVEMENT MARKING | | | |
|-------------------------------|------------|-----------|--------------|
| LOCATION | BEGIN STA. | END STA. | FOOT |
| LEFT & RIGHT | 95+00.00 | 101+32.52 | 252.00 |
| STA. EQ. 101+32.52 = 22+00.00 | | | |
| LEFT & RIGHT | 22+00.00 | 27+50.00 | 220.00 |
| LEFT | 34+91.50 | 37+50.00 | 104.00 |
| TOTAL | | | 576.0 |

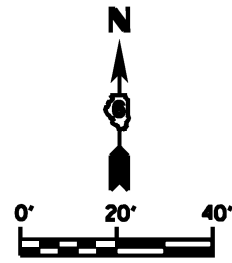
| SHORT TERM PAVEMENT MARKING REMOVAL | | | |
|-------------------------------------|------------|-----------|---------------|
| LOCATION | BEGIN STA. | END STA. | SQ FT |
| LEFT & RIGHT | 95+00.00 | 101+32.52 | 83.92 |
| STA. EQ. 101+32.52 = 22+00.00 | | | |
| LEFT & RIGHT | 22+00.00 | 27+50.00 | 73.26 |
| LEFT | 34+91.50 | 37+50.00 | 34.63 |
| TOTAL | | | 191.81 |

MODEL: D:\default... FILE: M:\MS... \p\illinois\work\benley.com\PNWIDOT\Documents\DOT_0_ces\District_6\ORD_Projects\72E86\CADData\CADsheets\72E86-shd-4-schedules.dgn

REV - MS

* FAI 55, FAP 663, FAU 7998

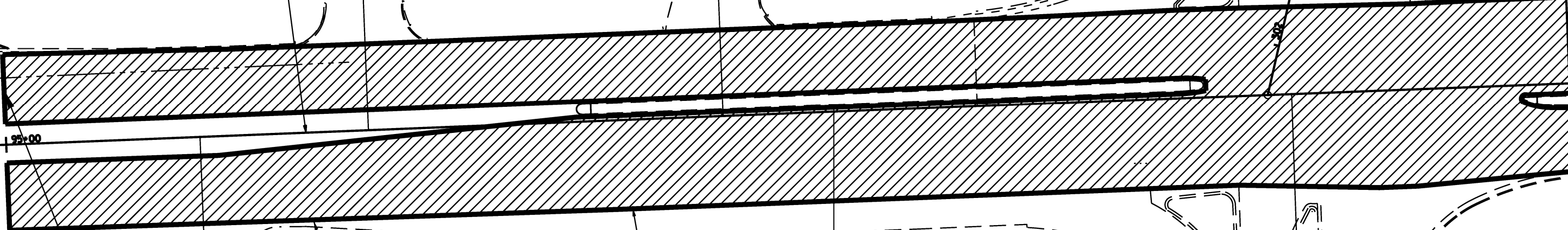
| | | | | | | | | | | | | |
|--|------------|-----------|---|------------------|--|--|--------------------|------------------|----------|--------------|-----------|-----------------------------|
| USER NAME = timothy.sharp PLOT SCALE = \$SCALE\$ PLOT DATE = 5/13/2026 | DESIGNED - | REVISED - | STATE OF ILLINOIS DEPARTMENT OF TRANSPORTATION | SCHEDULES | | | F.A. RTE. | SECTION | COUNTY | TOTAL SHEETS | SHEET NO. | |
| | DRAWN - | REVISED - | | | | | * | D6 R5 SPFLD 2026 | SANGAMON | 14 | 4 | |
| | CHECKED - | REVISED - | | SCALE: | | | SHEET | OF | SHEETS | STA. | TO STA. | ILLINOIS FED. AID PROJECT |
| | DATE - | REVISED - | | | | | CONTRACT NO. 72E86 | | | | | |



PR - STEVENSON DR.

+39. CE
CONC

+75. CE
BIT



MATCH LINE STA. 101+00

BEGIN PROJECT
STA. 95+00.00

PROP. H.M.A. SURFACE
REMOVAL, 1 1/2"

PROP. H.M.A. SURFACE COURSE,
IL-9.5, MIX "D", N50 - 1 1/2"

+74. CE
BIT

+18. CE
BIT

+93
BIT

① STA. 22+00, 33.5' RT
INLETS, TY A, TY 3 F & G
EOP ELEV 582.00
INV ELEV 579.74

⚠ STORM SEWERS (W/R) 12"
48' @ 0.52%

MODEL: Default
FILE NAME: c:\pwwork\wis\shar\m\122003172E66-sh15-8-plans.dgn

REV - MS

* FAI 55, FAP 663, FAU 7998

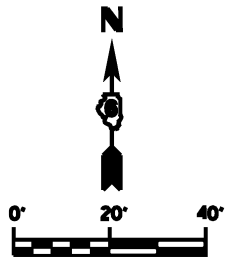
| | | |
|---------------------------|------------|-----------|
| USER NAME = timothy.sharp | DESIGNED - | REVISED - |
| | DRAWN - | REVISED - |
| | CHECKED - | REVISED - |
| PLOT DATE = 4/17/2026 | DATE - | REVISED - |

STATE OF ILLINOIS
DEPARTMENT OF TRANSPORTATION

PLANS

SCALE: SHEET OF SHEETS STA. TO STA.

| F.A. RTE. | SECTION | COUNTY | TOTAL SHEETS | SHEET NO. |
|---------------------------|------------------|----------|--------------|-----------|
| * | D6 RS SPFLD 2026 | SANGAMON | 15 | 6 |
| CONTRACT NO. 72E86 | | | | |
| ILLINOIS FED. AID PROJECT | | | | |



[R2] [R3]

EQUATION:
STA. 10+32.52 BK =
STA. 22+00.00 AH

STA. 22+09.67

STA. 25+68.97
120.69' LT

STA. 26+49.95
120.69' LT

STA. 27+00.00

MATCH LINE STA. 101+00
MATCH LINE STA. 101+00

STA. 27+50.00

PR - STEVENSON DR.

PROP. H.M.A. SURFACE
REMOVAL, 1 1/2"

PROP. H.M.A. SURFACE COURSE,
IL-9.5, MIX "D", N50 - 1 1/2"

MODEL: Default
FILE NAME: c:\pwworkspace\sharpmid122003172568-shd-8-plans.dgn

REV - MS

* FAI 55, FAP 663, FAU 7998

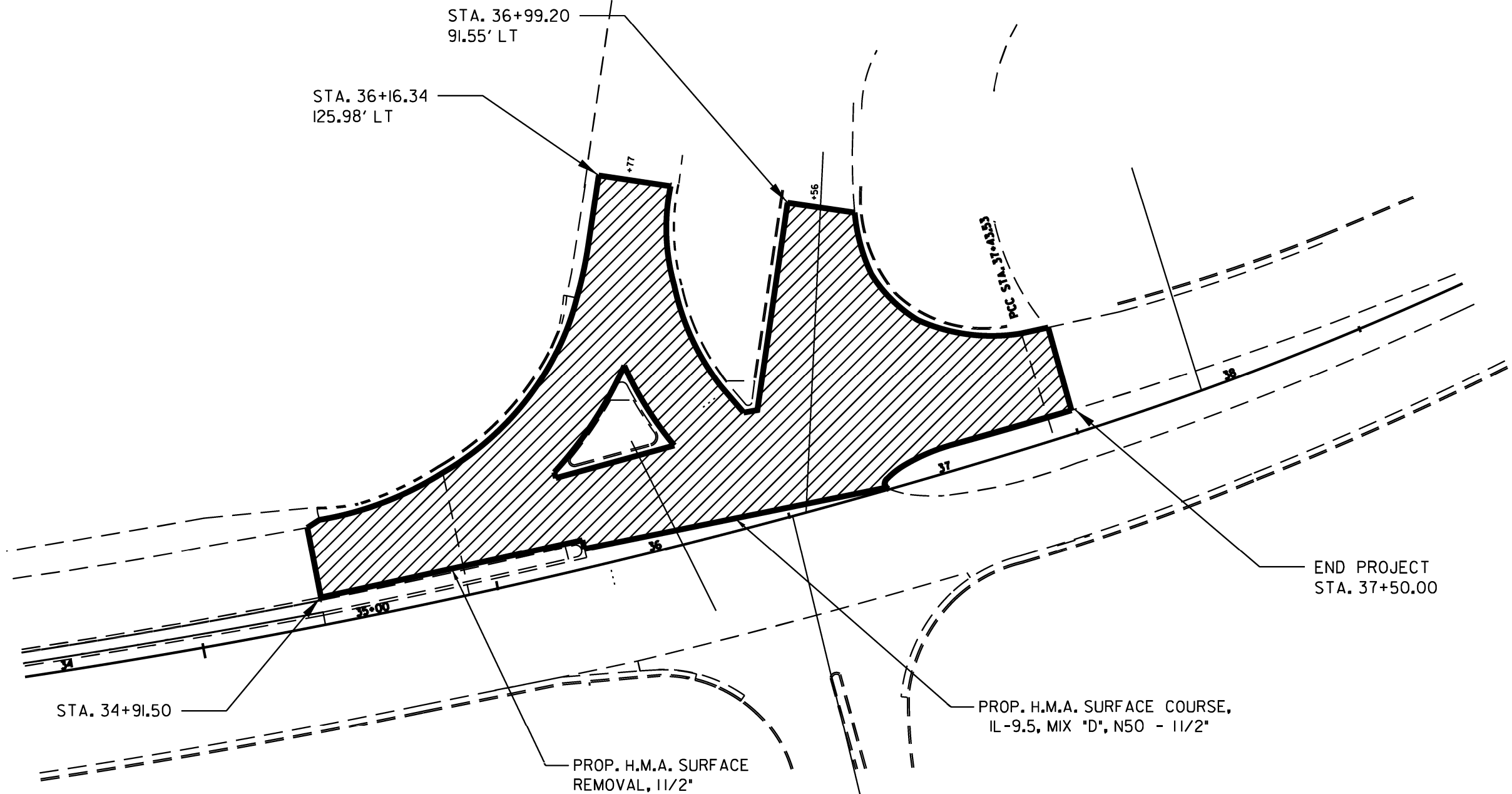
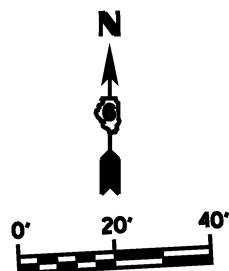
| | | |
|---------------------------|------------|-----------|
| USER NAME = timothy.sharp | DESIGNED - | REVISED - |
| | DRAWN - | REVISED - |
| | CHECKED - | REVISED - |
| PLOT DATE = 4/17/2026 | DATE - | REVISED - |

**STATE OF ILLINOIS
DEPARTMENT OF TRANSPORTATION**

PLANS

SCALE: SHEET OF SHEETS STA. TO STA.

| F.A. RTE. | SECTION | COUNTY | TOTAL SHEETS | SHEET NO. |
|---------------------------|------------------|----------|--------------|-----------|
| * | D6 RS SPFLD 2026 | SANGAMON | 15 | 7 |
| CONTRACT NO. 72E86 | | | | |
| ILLINOIS FED. AID PROJECT | | | | |



MODEL: Default
 FILE NAME: c:\pwworkspace\sharpmid122003172E86-sh15-8-plans.dgn

REV - MS

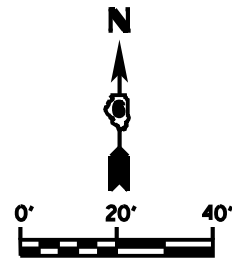
* FAI 55, FAP 663, FAU 7998

| | | |
|---------------------------|------------|-----------|
| USER NAME = timothy.sharp | DESIGNED - | REVISED - |
| | DRAWN - | REVISED - |
| | CHECKED - | REVISED - |
| PLOT DATE = 4/17/2026 | DATE - | REVISED - |

STATE OF ILLINOIS
DEPARTMENT OF TRANSPORTATION

| | | | |
|--------------|-------|-----------|--------------|
| PLANS | | | |
| SCALE: | SHEET | OF SHEETS | STA. TO STA. |

| F.A. RTE. | SECTION | COUNTY | TOTAL SHEETS | SHEET NO. |
|---------------------------|------------------|----------|--------------|-----------|
| * | D6 RS SPFLD 2026 | SANGAMON | 15 | 8 |
| CONTRACT NO. 72E86 | | | | |
| ILLINOIS FED. AID PROJECT | | | | |



PR ~ STEVENSON DR.

① SOLID WHITE (TY.)

⑤ SKIP DASH WHITE (TY.)

② SOLID YELLOW (TY.)

① DOUBLE YELLOW

⑥ SOLID WHITE (TY.)

MATCH LINE STA. 101+00

LEGEND

- ① MODIFIED URETHANE PAVEMENT MARKING - LINE 5"
- ② MODIFIED URETHANE PAVEMENT MARKING - LINE 6"
- ③ MODIFIED URETHANE PAVEMENT MARKING - LINE 8"
- ④ MODIFIED URETHANE PAVEMENT MARKING - LINE 12"
- ⑤ PREFORMED PLASTIC PAVEMENT MARKING, TY D - LINE 5"
- ⑥ PREFORMED PLASTIC PAVEMENT MARKING, TY D - LINE 6"
- ⑦ PREFORMED PLASTIC PAVEMENT MARKING, TY D - LINE 24"
- ⑧ PREFORMED PLASTIC PAVEMENT MARKING, TY D - LETTERS AND SYMBOLS

MODEL: Default
FILE NAME: c:\pav_work\pav\sharad\22003172E86-sh-0-1-pavement marking-plans.dgn

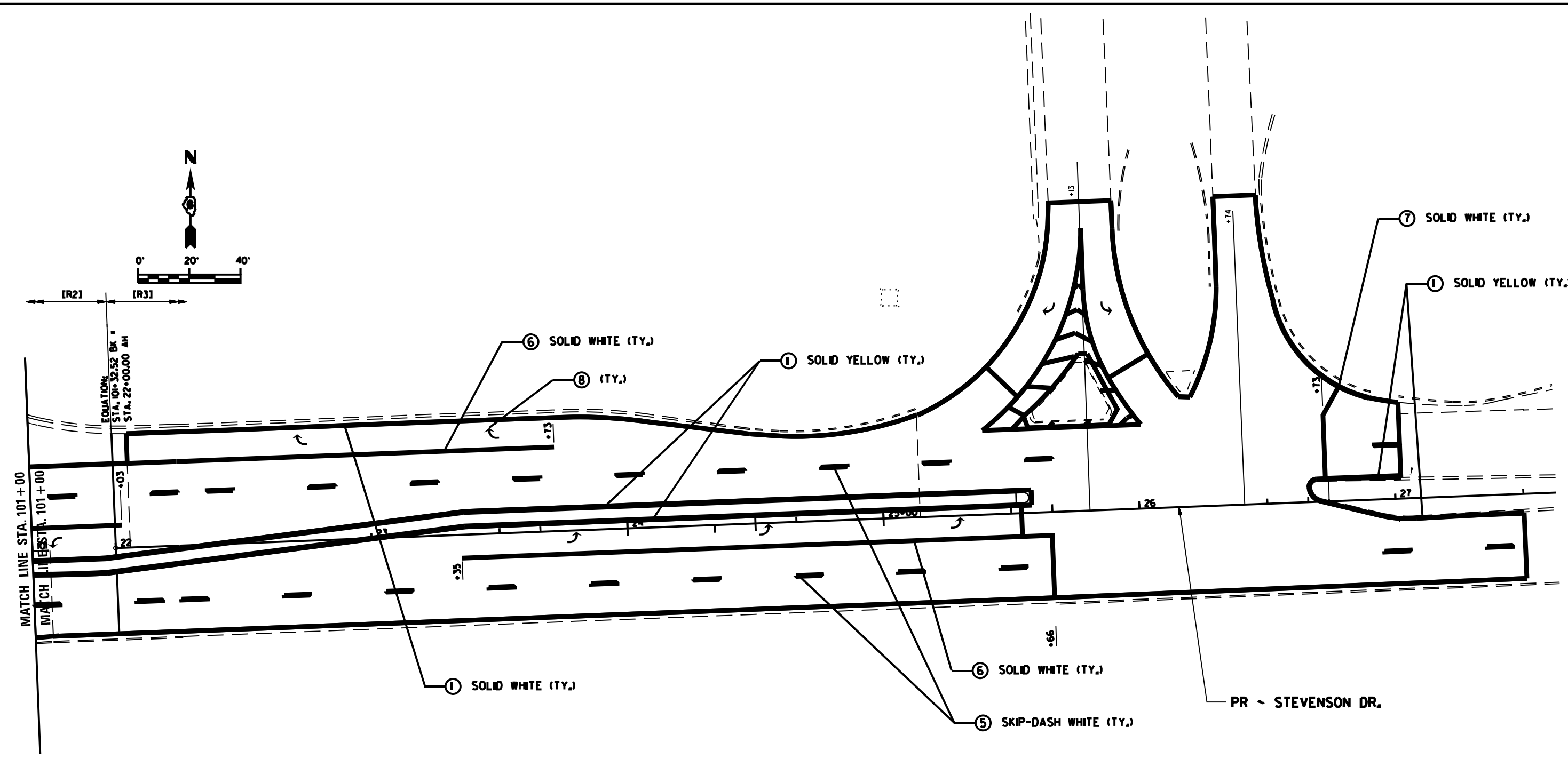
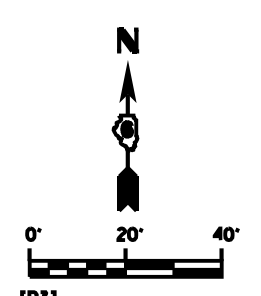
| | | |
|---------------------------|------------|-----------|
| USER NAME = timothy.sharp | DESIGNED - | REVISED - |
| | DRAWN - | REVISED - |
| | CHECKED - | REVISED - |
| PLOT DATE = 4/17/2026 | DATE - | REVISED - |

**STATE OF ILLINOIS
DEPARTMENT OF TRANSPORTATION**

PAVEMENT MARKING PLAN

SCALE: SHEET OF SHEETS STA. TO STA.

| F.A. RTE. | SECTION | COUNTY | TOTAL SHEETS | SHEET NO. |
|---------------------------|------------------|----------|--------------|-----------|
| * | D6 RS SPFLD 2026 | SANGAMON | 15 | 9 |
| CONTRACT NO. 72E86 | | | | |
| ILLINOIS FED. AID PROJECT | | | | |



LEGEND

- ① MODIFIED URETHANE PAVEMENT MARKING - LINE 5"
- ② MODIFIED URETHANE PAVEMENT MARKING - LINE 6"
- ③ MODIFIED URETHANE PAVEMENT MARKING - LINE 8"
- ④ MODIFIED URETHANE PAVEMENT MARKING - LINE 12"
- ⑤ PREFORMED PLASTIC PAVEMENT MARKING, TY D - LINE 5"
- ⑥ PREFORMED PLASTIC PAVEMENT MARKING, TY D - LINE 6"
- ⑦ PREFORMED PLASTIC PAVEMENT MARKING, TY D - LINE 24"
- ⑧ PREFORMED PLASTIC PAVEMENT MARKING, TY D - LETTERS AND SYMBOLS

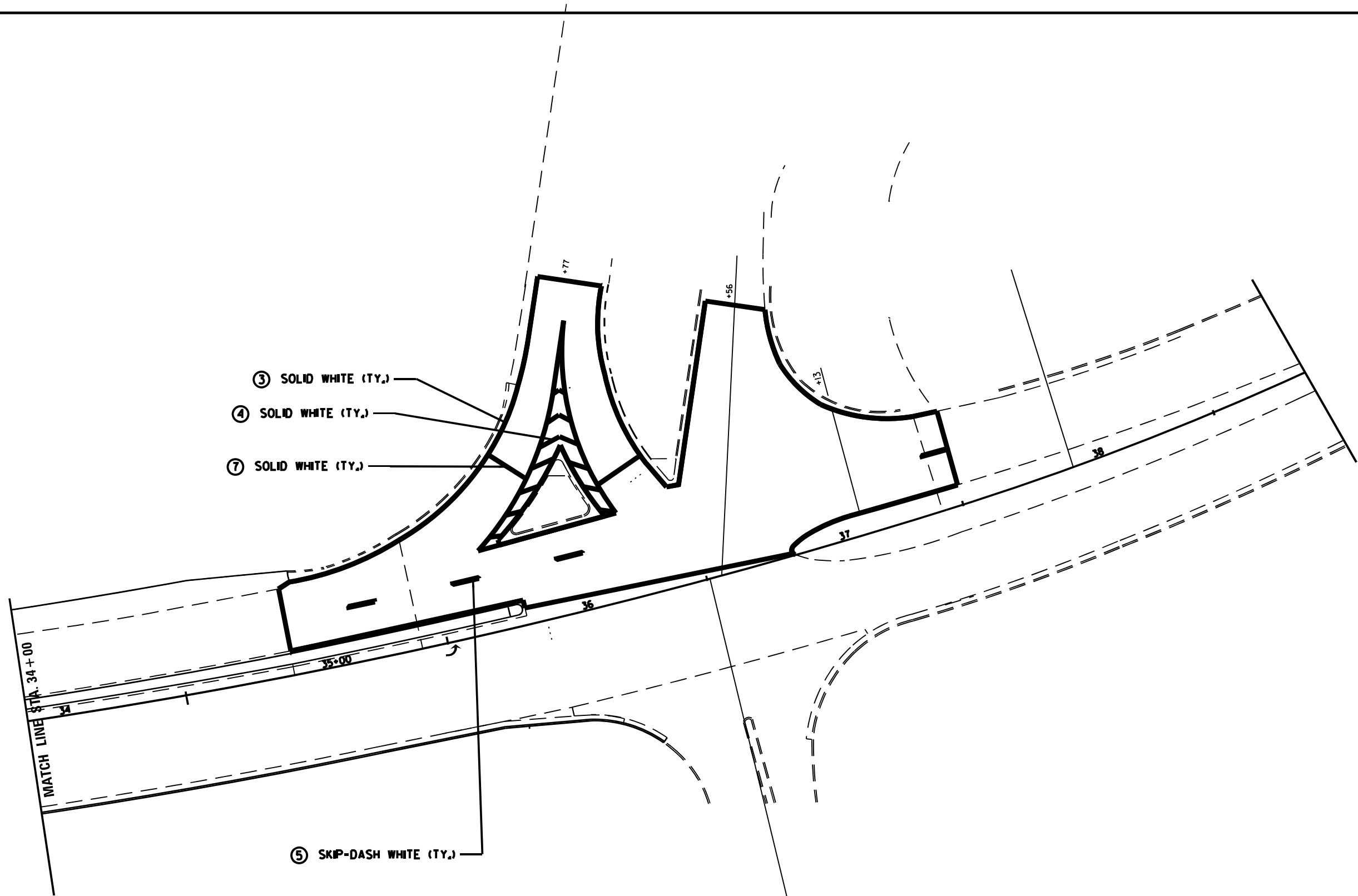
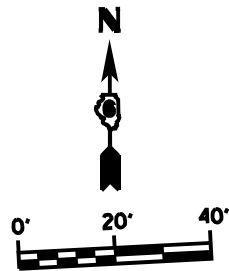
MODEL: Default
 FILE NAME: c:\pwwork\wsharad\22003172E86-sh-01-pavement marking-plans.dgn

| | | |
|---------------------------|------------|-----------|
| USER NAME = timothy.sharp | DESIGNED - | REVISED - |
| | DRAWN - | REVISED - |
| | CHECKED - | REVISED - |
| PLOT DATE = 4/17/2026 | DATE - | REVISED - |

STATE OF ILLINOIS
DEPARTMENT OF TRANSPORTATION

| PAVEMENT MARKING PLAN | | | |
|-----------------------|-------|-----------|--------------|
| SCALE: | SHEET | OF SHEETS | STA. TO STA. |

| F.A. RTE. | SECTION | COUNTY | TOTAL SHEETS | SHEET NO. |
|---------------------------|------------------|----------|--------------|-----------|
| * | D6 RS SPFLD 2026 | SANGAMON | 15 | 10 |
| CONTRACT NO. 72E86 | | | | |
| ILLINOIS FED. AID PROJECT | | | | |



LEGEND

- ① MODIFIED URETHANE PAVEMENT MARKING - LINE 5"
- ② MODIFIED URETHANE PAVEMENT MARKING - LINE 6"
- ③ MODIFIED URETHANE PAVEMENT MARKING - LINE 8"
- ④ MODIFIED URETHANE PAVEMENT MARKING - LINE 12"
- ⑤ PREFORMED PLASTIC PAVEMENT MARKING, TY D - LINE 5"
- ⑥ PREFORMED PLASTIC PAVEMENT MARKING, TY D - LINE 6"
- ⑦ PREFORMED PLASTIC PAVEMENT MARKING, TY D - LINE 24"
- ⑧ PREFORMED PLASTIC PAVEMENT MARKING, TY D - LETTERS AND SYMBOLS

MODEL: Default
 FILE NAME: c:\pawork\pawork\sharptd\22003172E86-sh-0-1-pavement marking-plans.dgn

| | | |
|---------------------------|------------|-----------|
| USER NAME = timothy.sharp | DESIGNED - | REVISED - |
| | DRAWN - | REVISED - |
| | CHECKED - | REVISED - |
| PLOT DATE = 4/17/2026 | DATE - | REVISED - |

**STATE OF ILLINOIS
DEPARTMENT OF TRANSPORTATION**

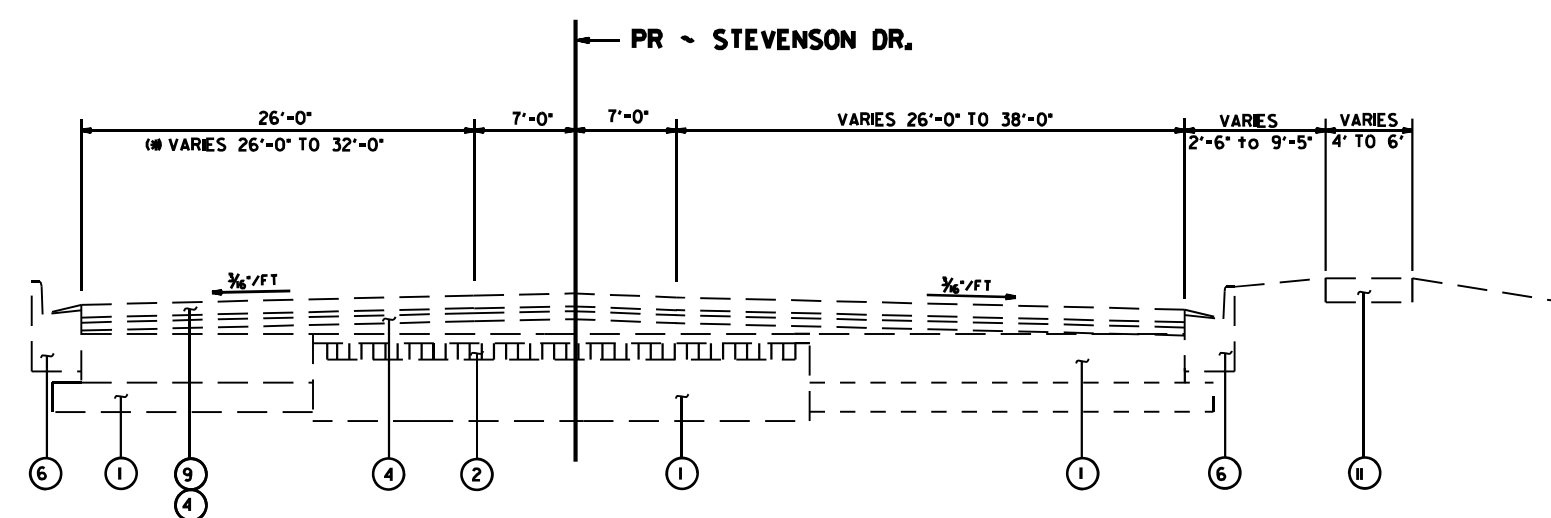
PAVEMENT MARKING PLAN

SCALE: SHEET OF SHEETS STA. TO STA.

| F.A. RTE. | SECTION | COUNTY | TOTAL SHEETS | SHEET NO. |
|---------------------------|------------------|----------|--------------|-----------|
| * | D6 RS SPFLD 2026 | SANGAMON | 15 | 11 |
| CONTRACT NO. 72E86 | | | | |
| ILLINOIS FED. AID PROJECT | | | | |

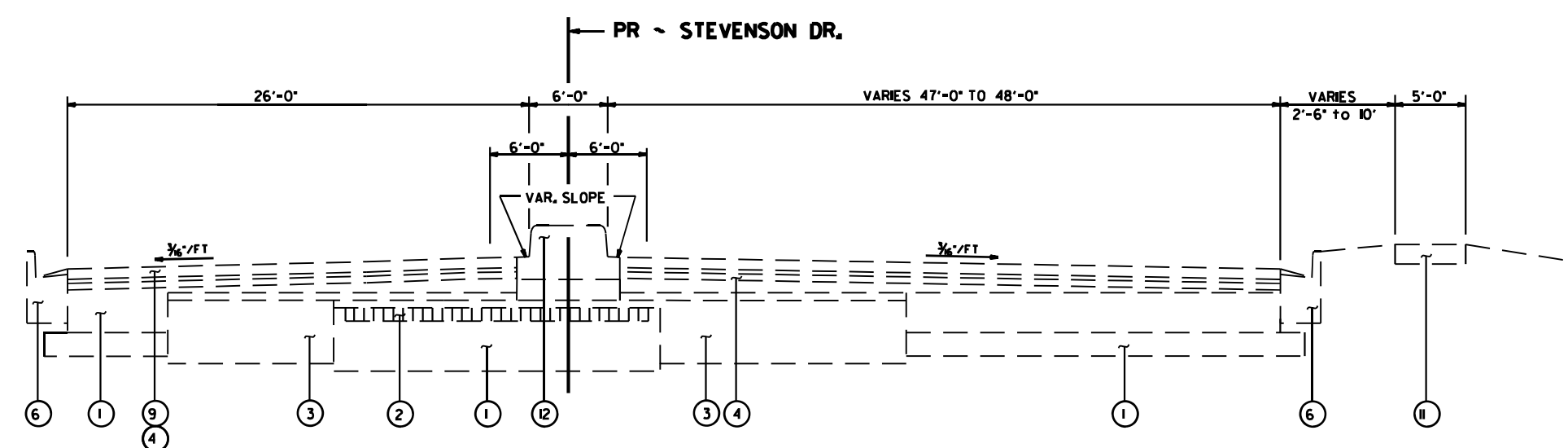
LEGEND

- ① EX STAB. SUB-BASE / P.C.C. BASE COURSE
- ② EX BRICK PAVEMENT
- ③ EX CONC. PAVEMENT
- ④ EX BIT. CONC. BINDER & SURFACE COURSES
- ⑤ EX SOLID CONCRETE MEDIAN
- ⑥ EX CONC. CURB & GUTTER
- ⑦ EX CONCRETE MEDIAN SURFACE
- ⑧ EX BITUMINOUS CONCRETE SHOULDER 8"
- ⑨ EX BITUMINOUS SURFACE REMOVAL (VARIABLE DEPTH)
- ⑩ EX BITUMINOUS SHOULDERS, SUPERPAVE
- ⑪ EX PCC SIDEWALK, 4"
- ⑫ EX CONCRETE MEDIAN, TYPE SB-6J2
- ⑬ EX CONCRETE MEDIAN, TYPE SB-2J2
- ⑭ EX CONCRETE MEDIAN SURFACE, 4"



TYPICAL SECTION

STA. 95+005 TO STA. 97+18



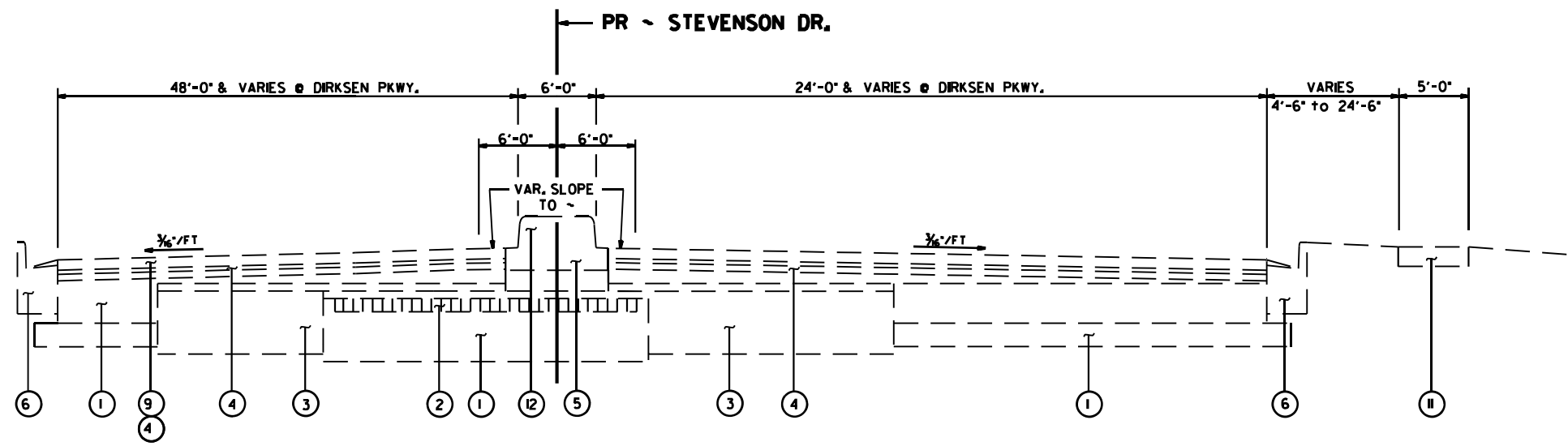
TYPICAL SECTION

STA. 97+18 TO STA. 99+61

MODEL: Default
FILE NAME: c:\paw\work\wis\sharad\122003172E86-sh1-12-14-typical_sections.dgn

* FAI 55, FAP 663, FAU 7998

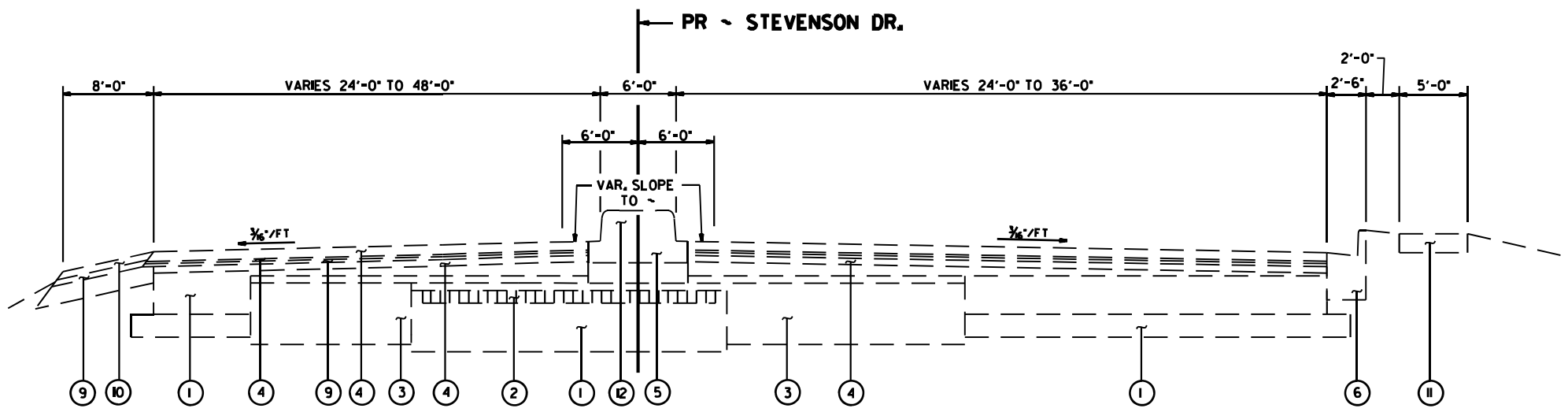
| USER NAME = timothy.sharp PLOT DATE = 4/17/2026 | DESIGNED - DRAWN - CHECKED - DATE - | REVISED - REVISED - REVISED - REVISED - | STATE OF ILLINOIS DEPARTMENT OF TRANSPORTATION | EXISTING TYPICAL SECTIONS | SCALE: SHEET OF SHEETS STA. TO STA. | <table border="1" style="width: 100%; border-collapse: collapse;"> <tr> <th>F.A. RTE.</th> <th>SECTION</th> <th>COUNTY</th> <th>TOTAL SHEETS</th> <th>SHEET NO.</th> </tr> <tr> <td>*</td> <td>D6 RS SPFLD 2026</td> <td>SANGAMON</td> <td>15</td> <td>12</td> </tr> <tr> <td colspan="5" style="text-align: center;">CONTRACT NO. 72E86</td> </tr> </table> | F.A. RTE. | SECTION | COUNTY | TOTAL SHEETS | SHEET NO. | * | D6 RS SPFLD 2026 | SANGAMON | 15 | 12 | CONTRACT NO. 72E86 | | | | |
|--|--|--|---|----------------------------------|---|--|-----------|---------|--------|--------------|-----------|---|------------------|----------|----|----|--------------------|--|--|--|--|
| F.A. RTE. | SECTION | COUNTY | TOTAL SHEETS | SHEET NO. | | | | | | | | | | | | | | | | | |
| * | D6 RS SPFLD 2026 | SANGAMON | 15 | 12 | | | | | | | | | | | | | | | | | |
| CONTRACT NO. 72E86 | | | | | | | | | | | | | | | | | | | | | |
| ILLINOIS FED. AID PROJECT | | | | | | | | | | | | | | | | | | | | | |



TYPICAL SECTION (SMART)

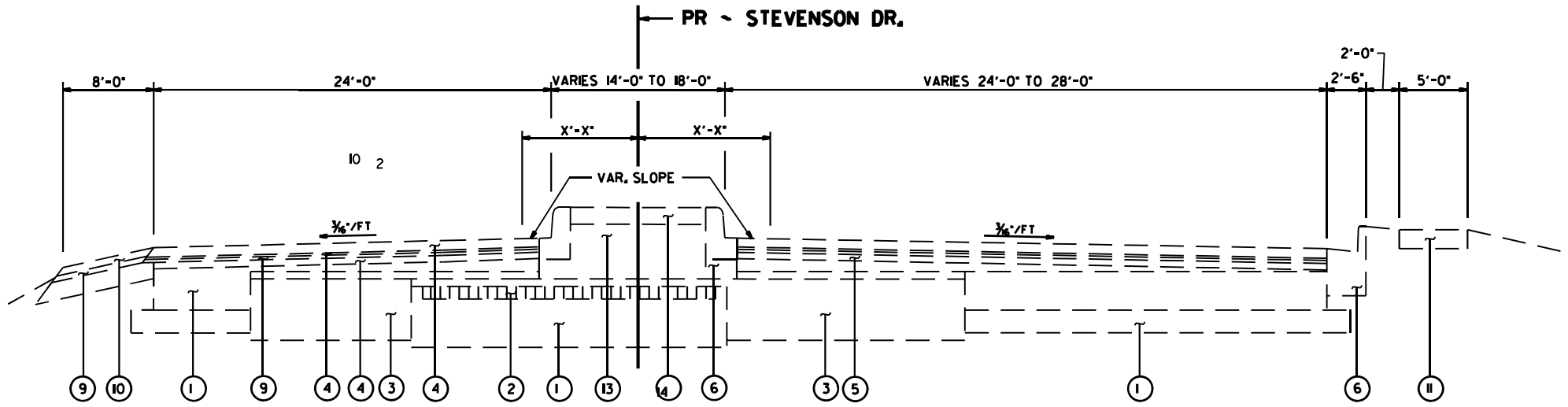
STA. 00+94 TO STA. 01+22.42
STA. 22+00 TO STA. 22+46

- LEGEND**
- ① EX STAB. SUB-BASE / P.C.C. BASE COURSE
 - ② EX BRICK PAVEMENT
 - ③ EX CONC. PAVEMENT
 - ④ EX BIT. CONC. BINDER & SURFACE COURSES
 - ⑤ EX SOLID CONCRETE MEDIAN
 - ⑥ EX CONC. CURB & GUTTER
 - ⑦ EX CONCRETE MEDIAN SURFACE
 - ⑧ EX BITUMINOUS CONCRETE SHOULDER 8"
 - ⑨ EX BITUMINOUS SURFACE REMOVAL (VARIABLE DEPTH)
 - ⑩ EX BITUMINOUS SHOULDERS, SUPERPAVE
 - ⑪ EX PCC SIDEWALK, 4"
 - ⑫ EX CONCRETE MEDIAN, TYPE SB-6J2
 - ⑬ EX CONCRETE MEDIAN, TYPE SB-2J2
 - ⑭ EX CONCRETE MEDIAN SURFACE, 4"



TYPICAL SECTION (3R)

STA. 22+46 TO STA. 25+68



TYPICAL SECTION (3R)

STA. 26+76 TO STA. 27+50

MODEL: Default
FILE NAME: c:\paw\work\sharphard\122003172588-sh1-12-14-typical_sections.dgn

* FAI 55, FAP 663, FAU 7998

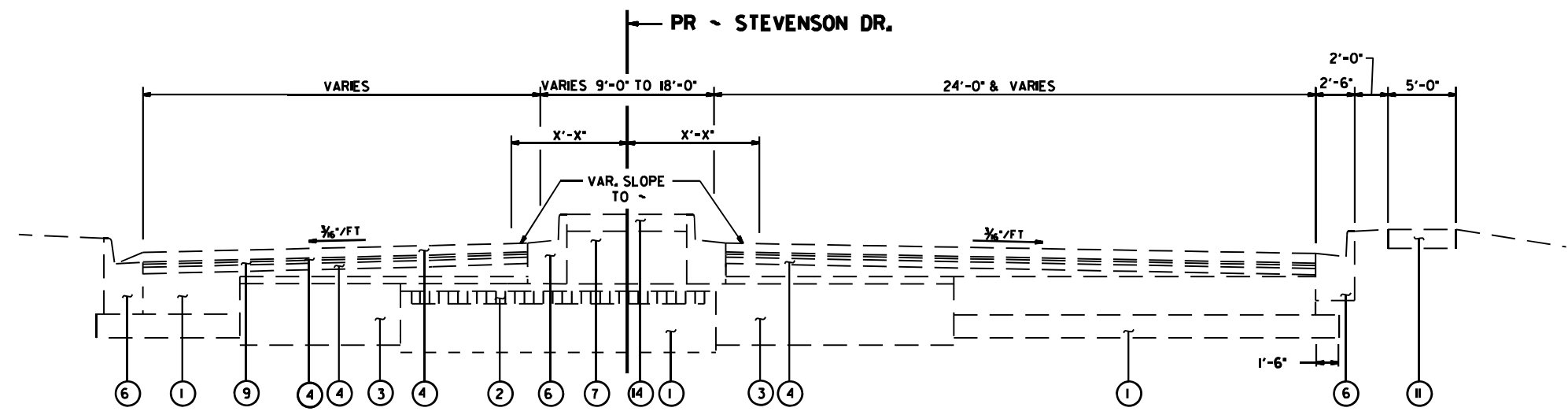
| | | |
|---------------------------|------------|-----------|
| USER NAME = timothy.sharp | DESIGNED - | REVISED - |
| | DRAWN - | REVISED - |
| | CHECKED - | REVISED - |
| PLOT DATE = 4/17/2026 | DATE - | REVISED - |

**STATE OF ILLINOIS
DEPARTMENT OF TRANSPORTATION**

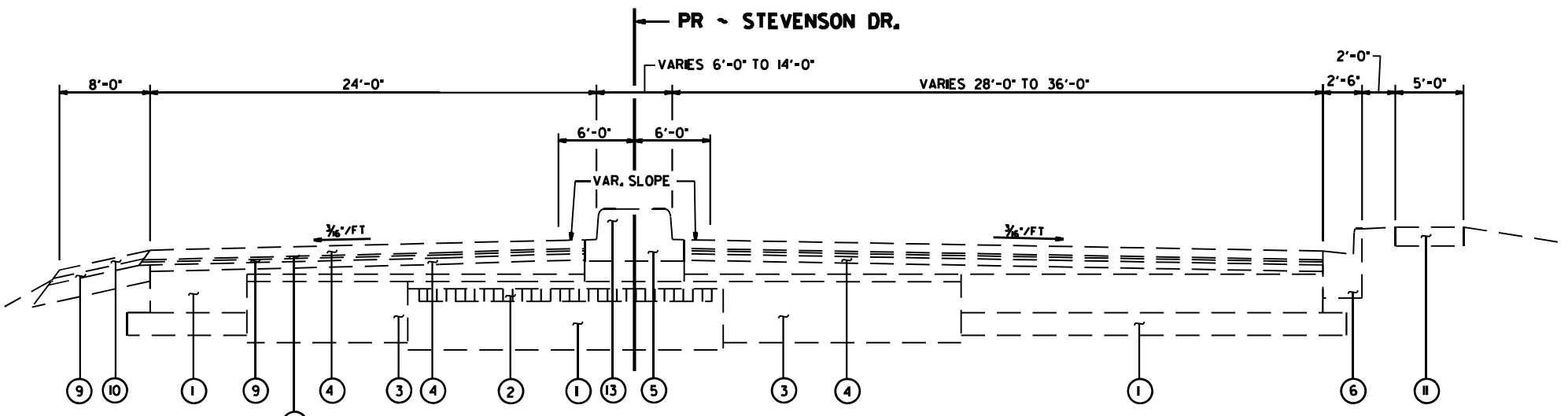
EXISTING TYPICAL SECTIONS

SCALE: SHEET OF SHEETS STA. TO STA.

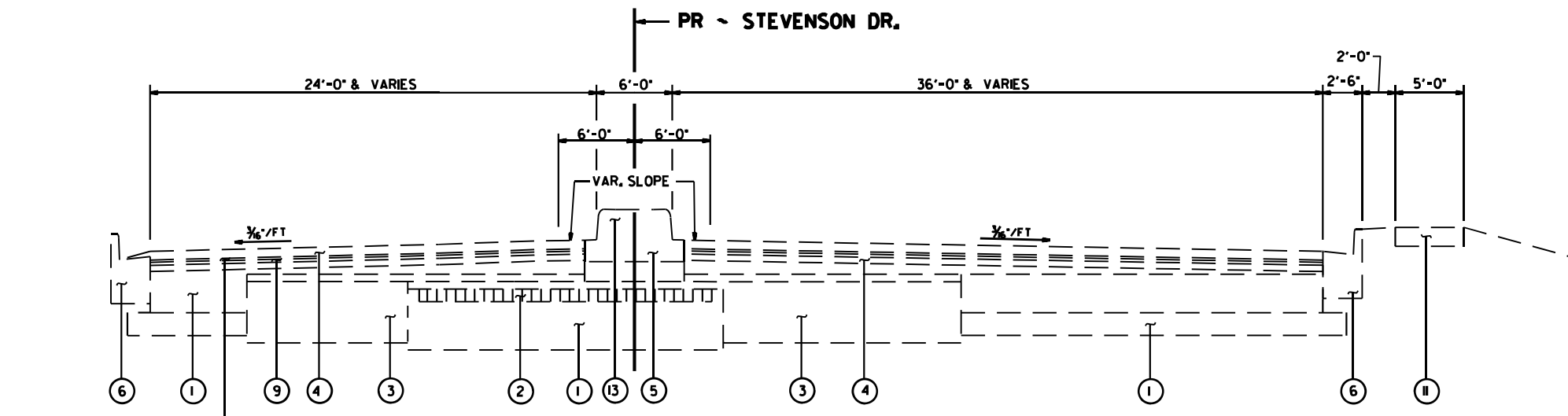
| F.A. RTE. | SECTION | COUNTY | TOTAL SHEETS | SHEET NO. |
|---------------------------|------------------|----------|--------------|-----------|
| * | D6 RS SPFLD 2026 | SANGAMON | 15 | 13 |
| CONTRACT NO. 72E86 | | | | |
| ILLINOIS FED. AID PROJECT | | | | |



TYPICAL SECTION
STA. 37+00 TO STA. 37+50



TYPICAL SECTION
STA. 34+9.52 TO STA. 35+02



TYPICAL SECTION
STA. 35+02 TO STA. 35+92

- LEGEND**
- ① EX STAB. SUB-BASE / P.C.C. BASE COURSE
 - ② EX BRICK PAVEMENT
 - ③ EX CONC. PAVEMENT
 - ④ EX BIT. CONC. BINDER & SURFACE COURSES
 - ⑤ EX SOLID CONCRETE MEDIAN
 - ⑥ EX CONC. CURB & GUTTER
 - ⑦ EX CONCRETE MEDIAN SURFACE
 - ⑧ EX BITUMINOUS CONCRETE SHOULDER 8"
 - ⑨ EX BITUMINOUS SURFACE REMOVAL (VARIABLE DEPTH)
 - ⑩ EX BITUMINOUS SHOULDERS, SUPERPAVE
 - ⑪ EX PCC SIDEWALK, 4"
 - ⑫ EX CONCRETE MEDIAN, TYPE SB-6J2
 - ⑬ EX CONCRETE MEDIAN, TYPE SB-2J2
 - ⑭ EX CONCRETE MEDIAN SURFACE, 4"

MODEL: Default
FILE NAME: c:\paw\work\sharad\1220031725E86-sh1-12-14-typical_sections.dgn

* FAI 55, FAP 663, FAU 7998

| | | |
|---------------------------|------------|-----------|
| USER NAME = timothy.sharp | DESIGNED - | REVISED - |
| | DRAWN - | REVISED - |
| | CHECKED - | REVISED - |
| PLOT DATE = 4/20/2026 | DATE - | REVISED - |

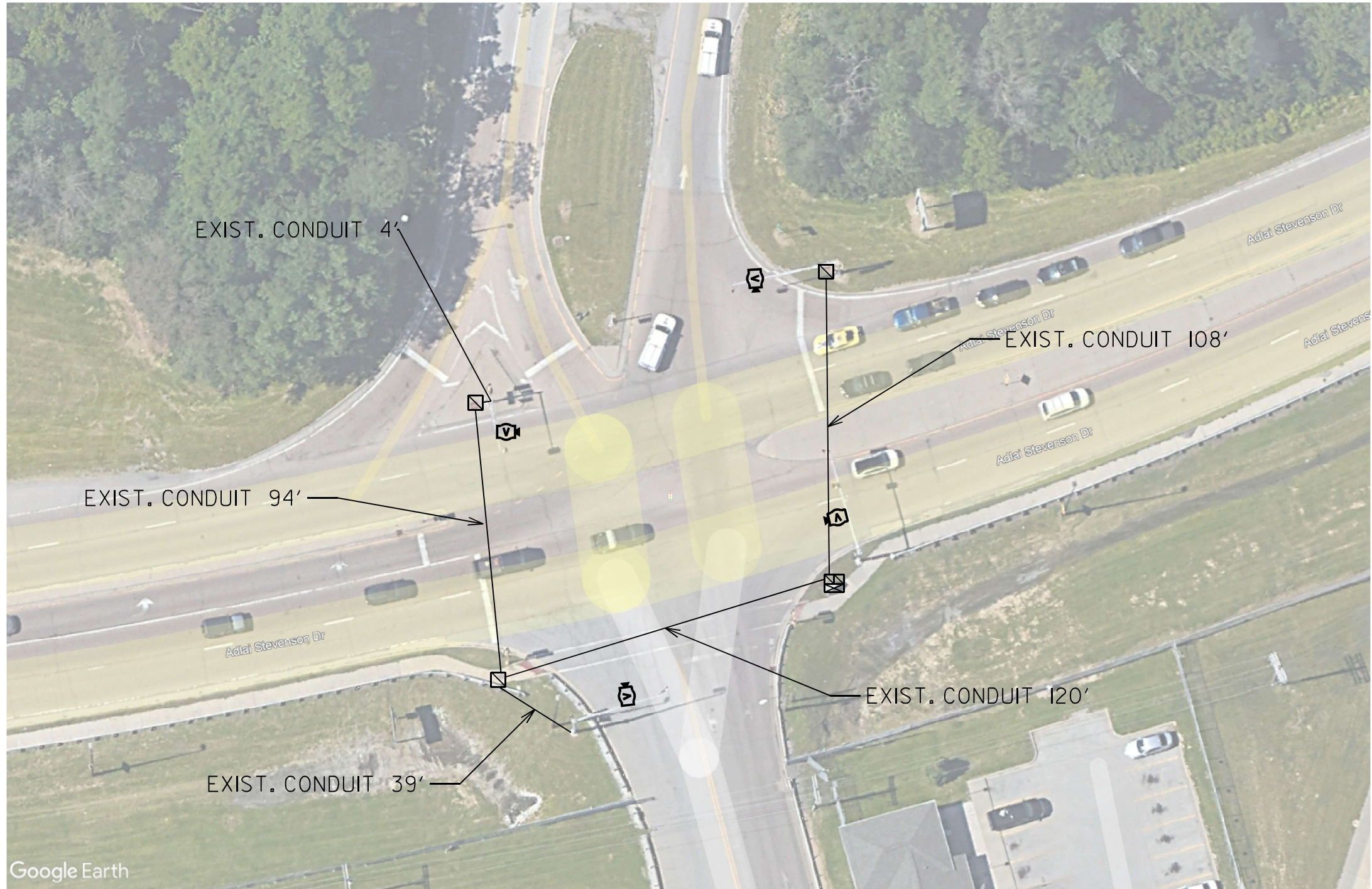
**STATE OF ILLINOIS
DEPARTMENT OF TRANSPORTATION**

| | | | |
|----------------------------------|------------------|-----------------|--------------|
| EXISTING TYPICAL SECTIONS | | | |
| F.A. RTE. | SECTION | COUNTY | TOTAL SHEETS |
| * | D6 RS SPFLD 2026 | SANGAMON | 15 |
| SCALE: | | SHEET OF SHEETS | STA. TO STA. |

| | |
|--------------------|---------------------------|
| CONTRACT NO. 72E86 | ILLINOIS FED. AID PROJECT |
|--------------------|---------------------------|

LEGEND

- R REMOVE
- RR REMOVE AND REPLACE
- ◻ EXISTING HANDHOLE
- ◻◻ EXISTING DOUBLE HANDHOLE
- ◻◻◻ EXISTING CONTROLLER
- ◻◻◻◻ PROPOSED HANDHOLE
- ◻◻◻◻◻ PROPOSED CCTV CAMERA
- ◻◻◻◻◻◻ EXISTING GULF BOX JUNCTION
- EXISTING CONDUIT
- - - PROPOSED CONDUIT
- ◻◻◻◻◻◻ VIDEO VEHICLE DETECTION SYSTEM



MODEL: Default
FILE NAME: c:\p\work\wis\sharptd122003172E86-shb-15-video_detection.dgn

| | | |
|---------------------------|------------|-----------|
| USER NAME = timothy.sharp | DESIGNED - | REVISED - |
| | DRAWN - | REVISED - |
| | CHECKED - | REVISED - |
| PLOT DATE = 4/20/2026 | DATE - | REVISED - |

**STATE OF ILLINOIS
DEPARTMENT OF TRANSPORTATION**

VIDEO DETECTION SYSTEM

SCALE: SHEET OF SHEETS STA. TO STA.

| | | | | | | |
|-----------------------------|--|---------------------------|---------|--------------------|--------------|-----------|
| * FAI 55, FAP 663, FAU 7998 | | F.A. RTE. | SECTION | COUNTY | TOTAL SHEETS | SHEET NO. |
| | | D6 RS SPFLD 2026 | | SANGAMON | 15 | 15 |
| | | | | CONTRACT NO. 72E86 | | |
| | | ILLINOIS FED. AID PROJECT | | | | |