

STATE OF ILLINOIS
DEPARTMENT OF TRANSPORTATION

F.A.P. RTE.	SECTION	COUNTY	TOTAL SHEETS	SHEET NO.
310	83RS-2	SCOTT	7	1
		ILLINOIS	CONTRACT NO. 72E85	

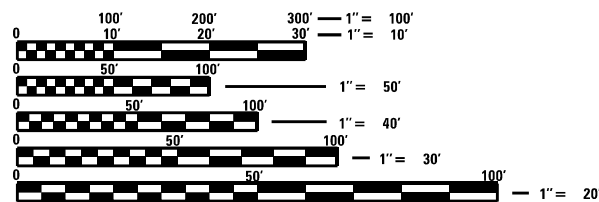
FOR INDEX OF SHEETS, SEE SHEET NO. 2

PROPOSED HIGHWAY PLANS

FAP 310 (US 67)
SECTION 83RS-2
PROJECT
SMART OVERLAY
SCOTT COUNTY

C-96-076-26

ADT = 1,800 (2026)
SU = 70 (2025)
MU = 125 (2025)

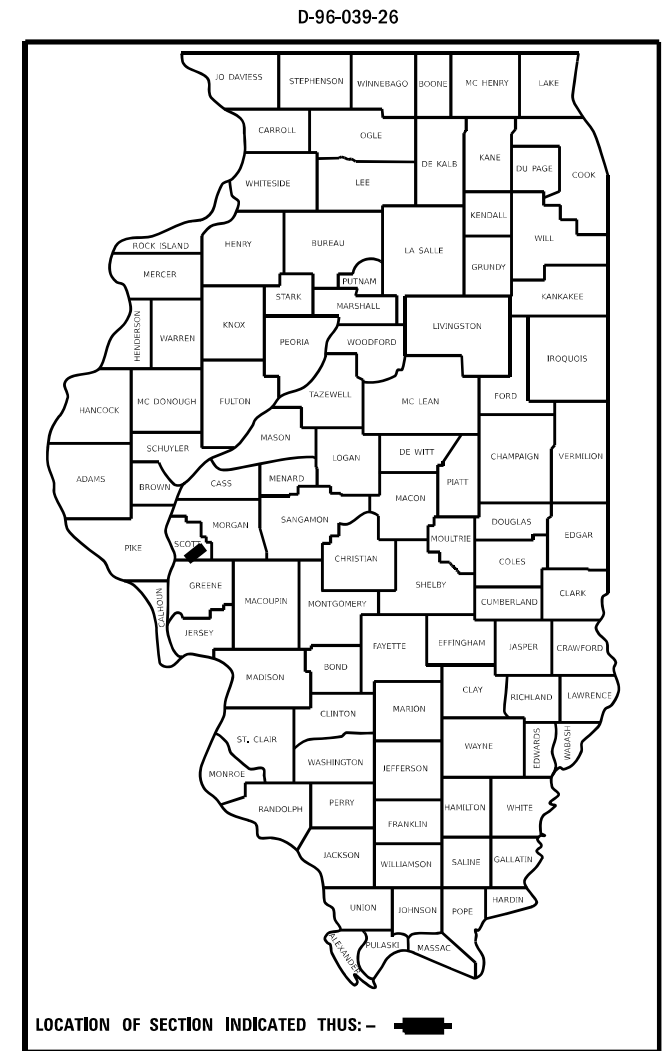
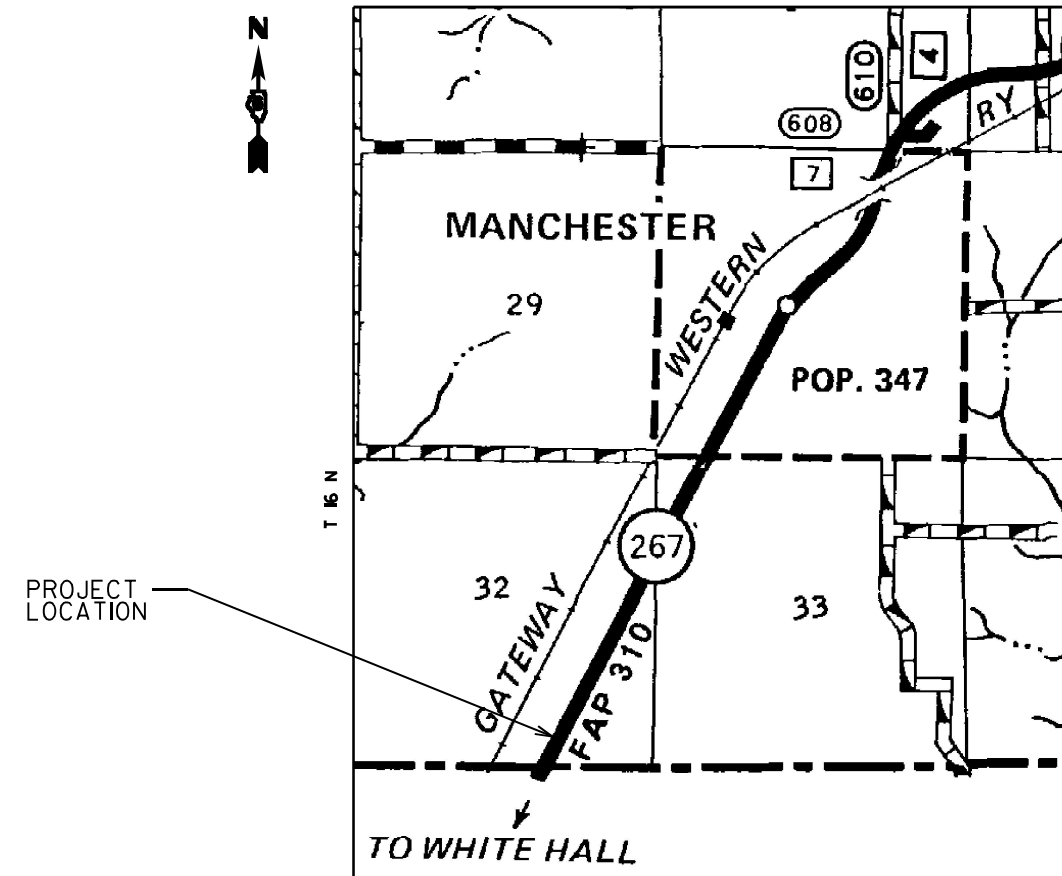


FULL SIZE PLANS HAVE BEEN PREPARED USING STANDARD ENGINEERING SCALES. REDUCED SIZED PLANS WILL NOT CONFORM TO STANDARD SCALES. IN MAKING MEASUREMENTS ON REDUCED PLANS, THE ABOVE SCALES MAY BE USED.

J.U.L.I.E.
JOINT UTILITY LOCATION INFORMATION FOR EXCAVATORS
1-800-892-0123
OR 811

PROJECT ENGINEER: MIKE HAMBY (217)524-7765
PROJECT MANAGER TIM SHARP (217)524-9160

CONTRACT NO. 72E85



LOCATION OF SECTION INDICATED THIS: - [black rectangle]

STATE OF ILLINOIS
DEPARTMENT OF TRANSPORTATION

SUBMITTED May 15, 20 26
Teresa C. Price
REGIONAL ENGINEER

June 26, 20 26
[Signature]
ENGINEER OF DESIGN AND ENVIRONMENT

June 26, 20 26
[Signature]
DIRECTOR OF HIGHWAYS PROJECT IMPLEMENTATION

PRINTED BY THE AUTHORITY
OF THE STATE OF ILLINOIS

0-02181-6006
 CONSTR. CODE
 100% STATE
 SCOTT
 ROADWAY
 0005
 RURAL

CODE NO.	ITEM	UNIT	TOTAL QUANTITY	
40600290	BITUMINOUS MATERIALS (TACK COAT)	POUND	553	553
40600990	TEMPORARY RAMP	SQYD	18	18
40604050	HOT-MIX ASPHALT SURFACE COURSE, IL-9.5, MIX "C", N50	TON	138	138
44000157	HOT-MIX ASPHALT SURFACE REMOVAL, 2'	SQYD	1,228	1,228
67100100	MOBILIZATION	L SUM	1	1
70107025	CHANGEABLE MESSAGE SIGN	CAL DA	14	14
70300100	SHORT-TERM PAVEMENT MARKING	FOOT	274	274
70300150	SHORT-TERM PAVEMENT MARKING REMOVAL	SOFT	91	91
* 78001120	PAINT PAVEMENT MARKING - LINE 5'	FOOT	1,371	1,371
* 78100100	RAISED REFLECTIVE PAVEMENT MARKER	EACH	69	69
X7010216	TRAFFIC CONTROL AND PROTECTION, (SPECIAL)	L SUM	1	1

* SPECIALTY ITEM

FILE NAME *	USER NAME * tuno"jshepp	DESIGNED -	REVISED -	STATE OF ILLINOIS DEPARTMENT OF TRANSPORTATION	SUMMARY OF QUANTITIES	Sheet	SECTION	COUNTY	TOTAL	SHEET		
p:\m1\1dot-pm.bentley.com\T\W\DOT\Document\DOT orr\ces\Dis\1ct 6\ORO Pro\ecta\72E8\1111e-1\CADsh-085-sh1-1-S110.dgn	PLOT SCALE * SSCALES	CHECKED -	REVISED -			310	83RS-2	SCOTT	7	3		
DefeuH	PLOT DATE * 5/13/21126	DATE -	REVISED -			SCALE1		I SHEET		OF	SHEETSI STA.	TO STA.
						CONTRACT NO. 12EIS Ill.uos Ino.am PROJct						

STA.	TO	STA.	LENGTH FT	SQ FT TAKEN FROM PLANS	BITUMINOUS MATERIALS (TACK COAT)		HMA SUR. REMOVAL 2"	HMA SUR. COURSE, IL-9.5, MIX "C", N50		
				AREA SQ FT	RATE POUND/SQ FT	POUND	SQ YD	DEPTH INCH	RATE TON/SQ YD	TON
22+00.00	TO	28+85.42	685.42	11050	0.05	553	1228	2	0.056	138
TOTALS			685	11050	-	553	1228	-	-	138

TEMPORARY RAMP			
STA.	WIDTH	LENGTH	SQ YD
	FT	FT	
22+00.00	12	6.7	8.9
28+85.42	12	6.7	8.9
TOTALS			17.9

PAINT PAVEMENT MARKING - LINE 5 EDGE LINE - WHITE			
LOCATION	BEGIN STA.	END STA.	FOOT
LEFT & RIGHT	22+00.00	28+85.42	1370.84
TOTAL			1370.8

SHORT TERM PAVEMENT MARKING			
LOCATION	BEGIN STA.	END STA.	FOOT
LEFT & RIGHT	22+00.00	28+85.42	274.17
TOTAL			274.2

SHORT TERM PAVEMENT MARKING REMOVAL			
LOCATION	BEGIN STA.	END STA.	SQ FT
LEFT & RIGHT	22+00.00	28+85.42	91.30
TOTAL			91.30

RAISED REFLECTIVE PAVEMENT MARKER			
LOCATION	BEGIN STA.	END STA.	EACH
LEFT & RIGHT	22+00.00	28+85.42	69
TOTAL			69

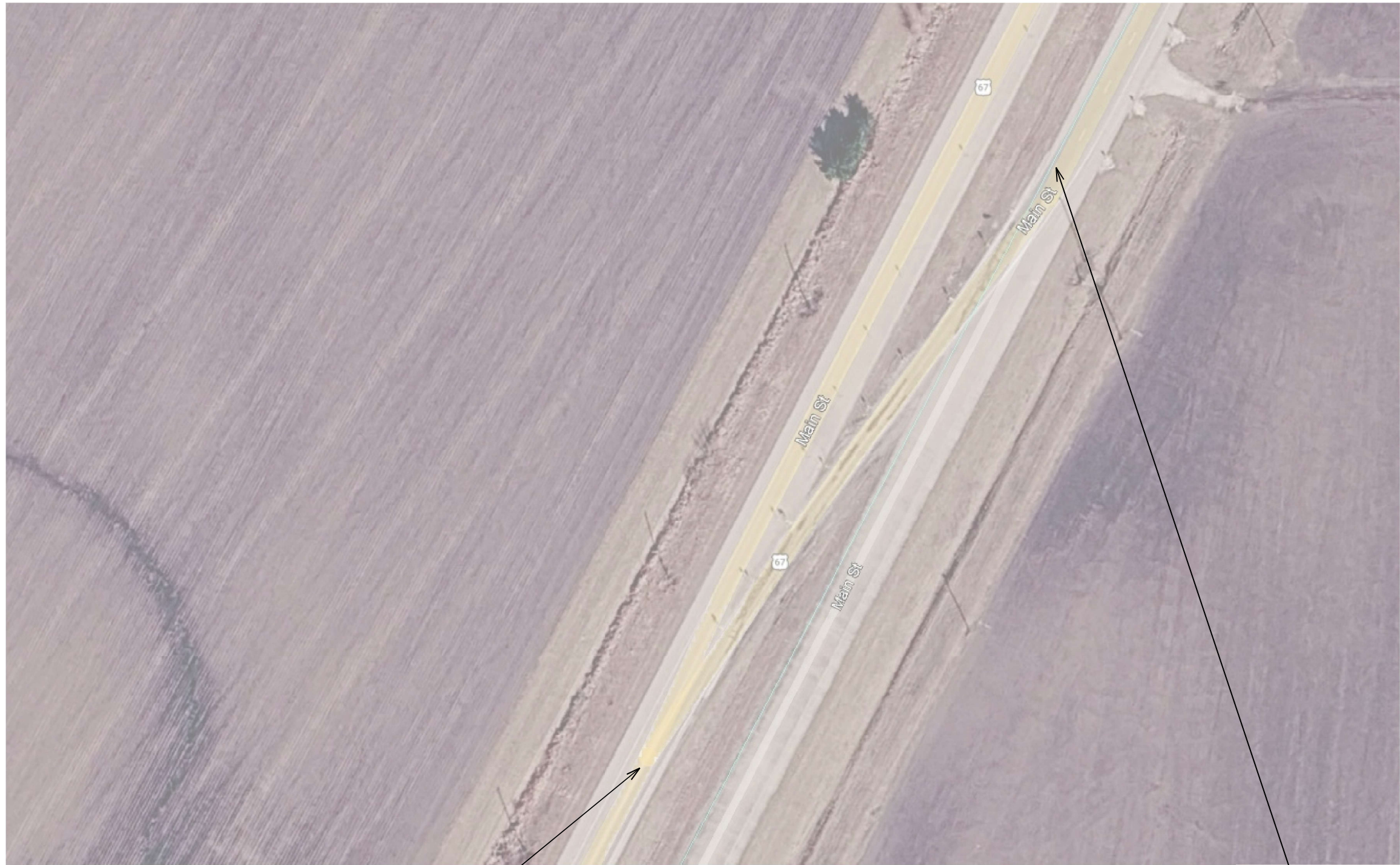
MODEL: D:\draft
 FILE NAME: p:\illinois-caw-bentley.com\PI\DOT\Documents\DOT_0_caw\District_6\ORD Project\72E85\CAD\Drawings\72E85-sht-4-schedule.dwg

USER NAME = tlmthy,sharp	DESIGNED -	REVISED -
	DRAWN -	REVISED -
PLOT SCALE = 55CALES	CHECKED -	REVISED -
PLOT DATE = 5/1/2026	DATE -	REVISED -

STATE OF ILLINOIS
DEPARTMENT OF TRANSPORTATION

SCHEDULES	
SCALE:	SHEET OF SHEETS STA. TO STA.

F.A.P. RTE.	SECTION	COUNTY	TOTAL SHEETS	SHEET NO.
310	83R5-2	SCOTT	7	4
CONTRACT NO. 72E85				
ILLINOIS FED. AID PROJECT				



BEGIN PROJECT
STA. 22+00.00

END PROJECT
STA. 28+85.42

MODEL: Default
FILE NAME: p:\illinois\work\bechtel.com\PI\DOT\Documents\DOT_0_csr\District_6\ORD_Project\72E85\CADData\CADsheet\72E85-sht5-location_map.dgn

USER NAME = tlmthy,sharp	DESIGNED -	REVISED -
	DRAWN -	REVISED -
PLOT SCALE = 55CALES	CHECKED -	REVISED -
PLOT DATE = 5/1/2026	DATE -	REVISED -

**STATE OF ILLINOIS
DEPARTMENT OF TRANSPORTATION**

LOCATION MAP

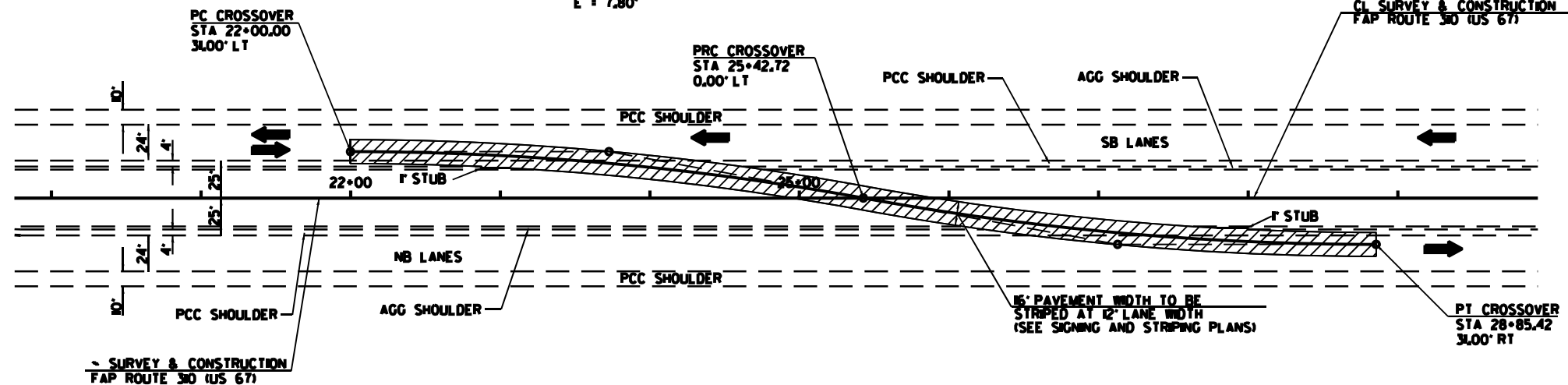
SCALE: SHEET OF SHEETS STA. TO STA.

F.A.P. RTE.	SECTION	COUNTY	TOTAL SHEETS	SHEET NO.
310	83R5-2	SCOTT	7	5
CONTRACT NO. 72E85				
ILLINOIS FED. AID PROJECT				



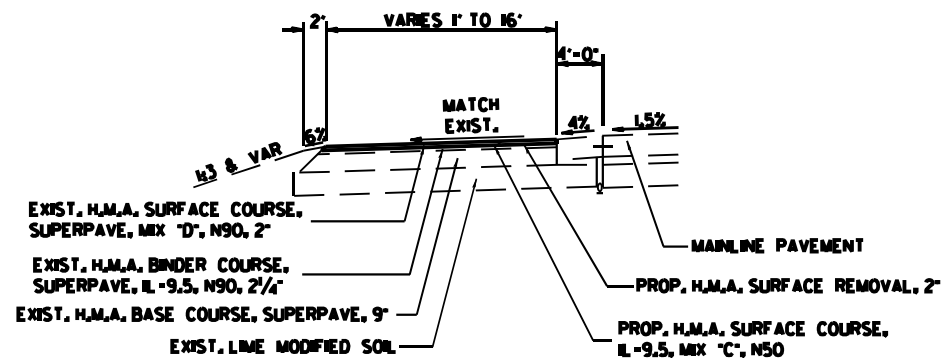
**CURVE DATA
CROSSOVER NO. 1**

I = 10° 20' 14"
D = 3° 00' 00"
R = 1,909.86'
T = 172.76'
L = 344.57'
E = 7.80'



NOTE: CROSSOVER PROFILE TO MATCH
FAP 310 PAVEMENT

CROSSOVER NO. 1 (PERMANENT)



**TYPICAL SECTION
CROSSOVER NO. 1 (PERMANENT)**

MODEL: Default
 FILE NAME: c:\pwwork\wsharad\1220107\2E85-shh6-clams.dgn
 2086480

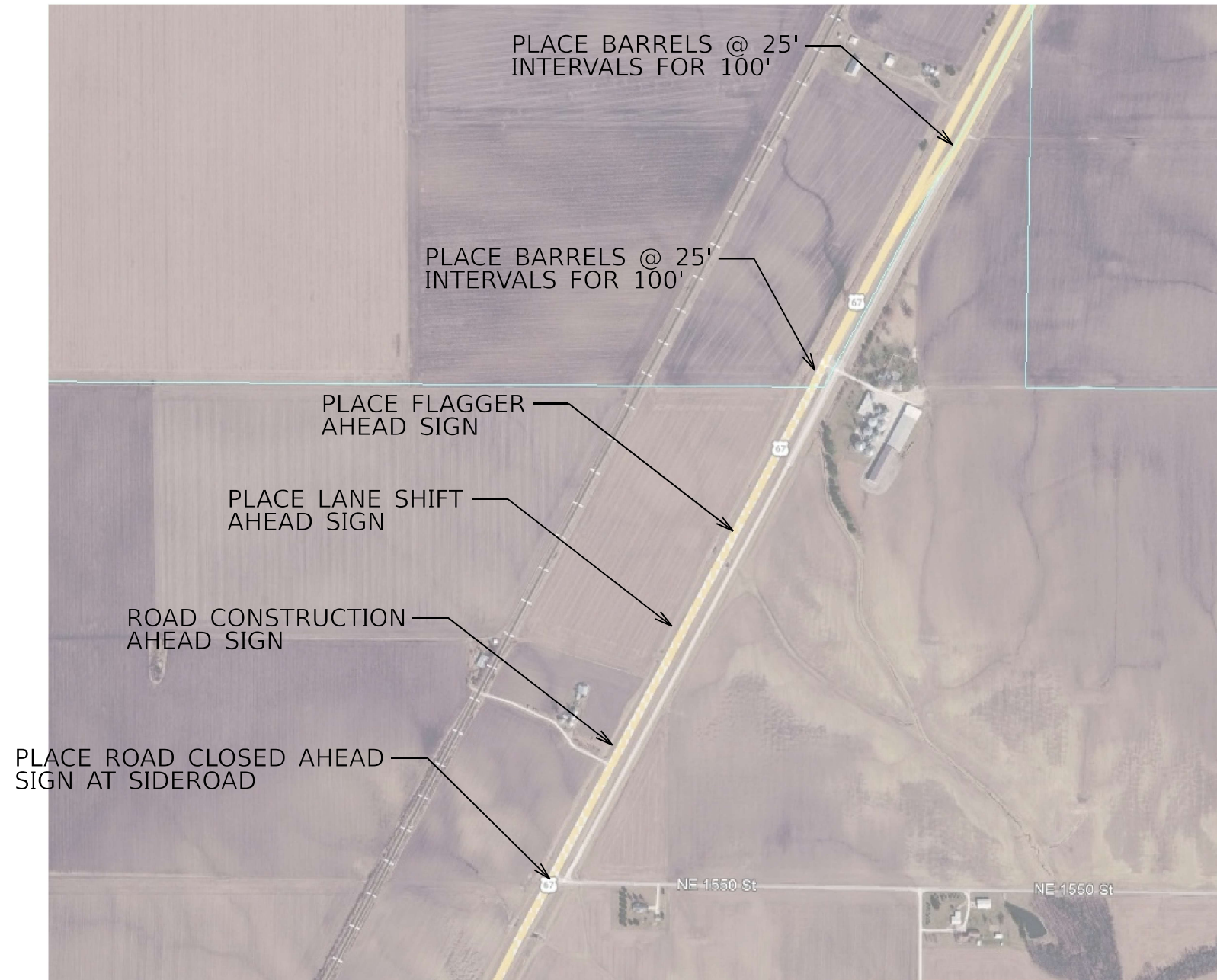
USER NAME = timothy.sharp	DESIGNED -	REVISED -
	DRAWN -	REVISED -
	CHECKED -	REVISED -
PLOT DATE = 4/27/2026	DATE -	REVISED -

**STATE OF ILLINOIS
DEPARTMENT OF TRANSPORTATION**

VIDEO DETECTION SYSTEM

SCALE: SHEET OF SHEETS STA. TO STA.

F.A.P. RTE. 310	SECTION 83RS-2	COUNTY SCOTT	TOTAL SHEETS 7	SHEET NO. 82
CONTRACT NO. 72E85				
ILLINOIS FED. AID PROJECT				



NOTES:

EXISTING TYPE III BARRICAEDS TO BE REMOVED.

SB LEFT SHOULDER CLOSURE PER STD.

ENGINEER TO DETERMINE NUMBER OF FLAGGERS AT TIME OF CONSTRUCTIO/

MODEL: D:\draft FILE NAME: p:\illinois\haw.bentley.com\PI\DOT\Documents\DOT_0_csa\District_6\ORBD_Project\72E85\CAD\Draw/CADsheet\72E85-shb74ra_c_control.dgn

USER NAME = tlmthy,sharp	DESIGNED -	REVISED -
	DRAWN -	REVISED -
PLOT SCALE = \$SCALE\$	CHECKED -	REVISED -
PLOT DATE = 5/1/2026	DATE -	REVISED -

**STATE OF ILLINOIS
DEPARTMENT OF TRANSPORTATION**

TRAFFIC CONTROL				
SCALE:	SHEET	OF	SHEETS	STA. TO STA.

F.A.P. RTE.	SECTION	COUNTY	TOTAL SHEETS	SHEET NO.
310	83R5-2	SCOTT	7	7
			CONTRACT NO. 72E85	
		ILLINOIS	FED. AID PROJECT	