

STATE OF ILLINOIS
DEPARTMENT OF TRANSPORTATION

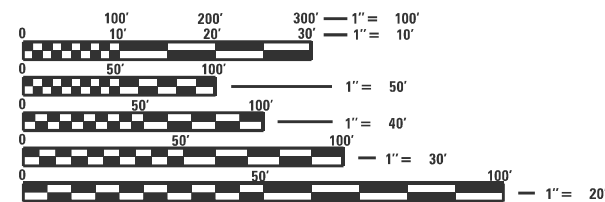
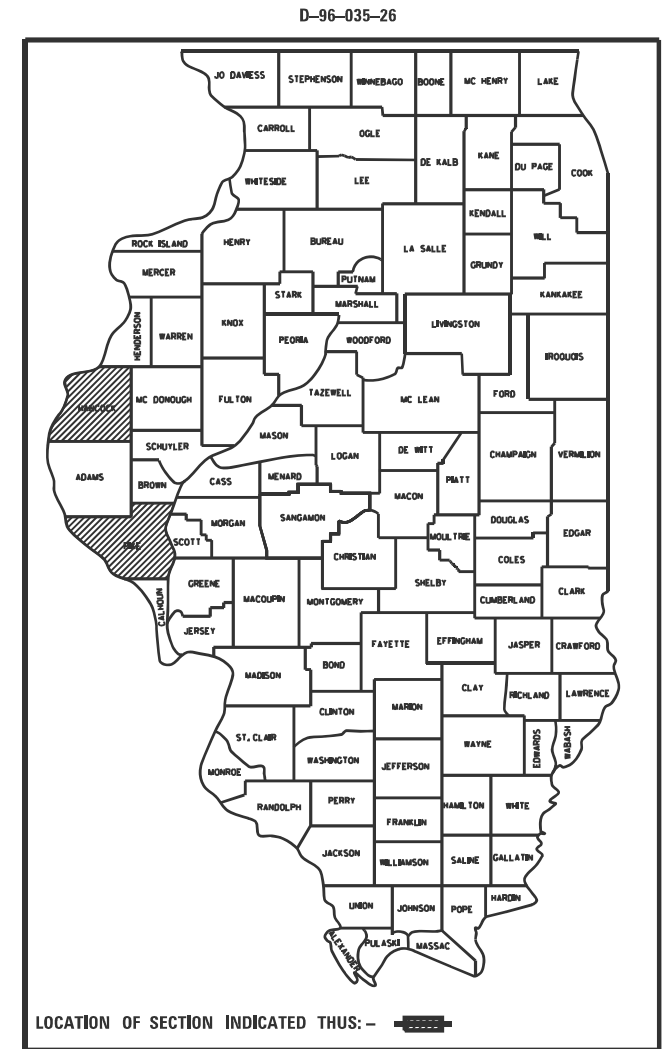
RTE.	SECTION	COUNTY	TOTAL SHEETS	SHEET NO.
VAR.	D6 ITS 2026-1	HANCOCK/PIKE	12	1
ILLINOIS			72E81	

FOR INDEX OF SHEETS, SEE SHEET NO. 2

PROPOSED IMPROVEMENTS

VARIOUS ROUTES
SECTION D6 ITS 2026-1

HANCOCK/PIKE CO.
C-96-072-26



FULL SIZE PLANS HAVE BEEN PREPARED USING STANDARD ENGINEERING SCALES. REDUCED SIZED PLANS WILL NOT CONFORM TO STANDARD SCALES. IN MAKING MEASUREMENTS ON REDUCED PLANS, THE ABOVE SCALES MAY BE USED.

J.U.L.I.E.
JOINT UTILITY LOCATION INFORMATION FOR EXCAVATION
1-800-892-0123
OR 811

SEE SHEET 5 FOR LOCATION MAP



PROJECT ENGINEER : MIKE HAMBY - (217)524-7765
PROJECT MANAGER : TIM SHARP - (217)524-9160

CONTRACT NO. 72E81

STATE OF ILLINOIS
DEPARTMENT OF TRANSPORTATION

SUBMITTED May 11, 2026
Teresa C. Price
REGION FOUR ENGINEER

June 26, 2026
[Signature]
ENGINEER OF DESIGN AND ENVIRONMENT

June 26, 2026
[Signature]
DIRECTOR OF HIGHWAYS PROJECT IMPLEMENTATION

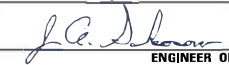
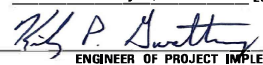
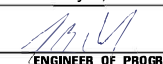
PRINTED BY THE AUTHORITY
OF THE STATE OF ILLINOIS

INDEX OF SHEETS

- 1 COVER SHEET
- 2 INDEX OF SHEETS, GENERAL NOTES, SIGNATURES, STANDARDS
- 3 SUMMARY OF QUANTITIES
- 4 LEGEND AND NOTES
- 5-7 LOCATION PLANS
- 8-12 PLANS

HIGHWAY STANDARDS

- 701001-02 OFF-RD OPERATIONS, 2L, 2W, MORE THAN 15' (4.5 m) AWAY
- 701006-05 OFF-RD OPERATIONS, 2L, 2W, 15' (4.5 m) TO 24" (600mm) FROM PAVEMENT EDGE
- 701101-05 OFF-RD OPERATIONS, MULTILANE, 15' (4.5 m) TO 24" (600mm) FROM EDGE OF PAVEMENT
- 701106-02 OFF-RD OPERATIONS, MULTILANE, MORE THAN 15' (4.5m) AWAY
- 701201-05 LANE CLOSURE, 2L, 2W, DAY ONLY, FOR SPEEDS > 45 MPH
- 701401-13 LANE CLOAURE, FREEWAY/EXPRESSWAY
- 701456-05 PARTIAL EXIT RAMP CLOSURE FREEWAY/EXPRESSWAY
- 701601-09 URBAN LANE CLOSURE, MULTILANE, 1W OR 2W WITH NONTRANSVERSABLE MEDIAN
- 701701-10 URBAN LANE CLOSURE, MULTILANE INTERSECTION
- 701801-06 SIDEWALK, CORNER OR CROSSWALK CLOSURE
- 701901-11 TRAFFIC CONTROL DEVICES

STATE OF ILLINOIS DEPARTMENT OF TRANSPORTATION DIVISION OF HIGHWAYS DISTRICT 6	
EXAMINED	July 2, 20 26
 ENGINEER OF OPERATIONS	
EXAMINED	July 2, 20 26
 ENGINEER OF PROJECT IMPLEMENTATION	
EXAMINED	July 2, 20 26
 ENGINEER OF PROGRAM DEVELOPMENT	

Only the District 6 engineer assigned to the project, the RE or RT, will move the signals to manual flash condition and return the signals to "normal" operation. This shall not be delegated. In doing so, the RE or RT will have full responsibility for function of those signals and any issue that may arise from his/her actions.

The RE or RT shall notify by email:

brion.fry@illinois.gov, dale.hebenstreit@illinois.gov, or michael.hamby@illinois.gov at least the day prior to the planned traffic signal flash condition.

The contractor shall not have access to the signal cabinet.

If you have any questions or require additional information, please call Michael Hamby at 217-556-4643.

REV - MS

FILE NAME :	USER NAME : timothy.sharp	DESIGNED - DMS 2/2017	REVISED -	STATE OF ILLINOIS DEPARTMENT OF TRANSPORTATION	INDEX OF SHEETS, GENERAL NOTES, SIGNATURES	RTE.	SECTION	COUNTY	TOTAL SHEETS	SHEET NO.	
								D6 ITS 2026-1	HAN/PBE	1	2
											CONTRACT NO. 72E0
											ILLINOIS FED. AID PROJECT
Default	PLOT DATE : 6/30/2026	DATE -	REVISED -			SCALE:	SHEET 1	OF 1	SHEETS	STA. TO STA.	

CODE NO.	ITEM	UNIT	TOTAL QUANTITY	6-00338-9986	6-00338-9986
				100% STATE	100% STATE
				HANCOCK ROADWAY 0021 URBAN	PIKE ROADWAY 0021 URBAN
67100100	MOBILIZATION	LSUM	1	0.5	0.5
70100200	TRAFFIC CONTROL AND PROTECTION, STANDARD 701401	LSUM	1	0.5	0.5
70102630	TRAFFIC CONTROL AND PROTECTION, STANDARD 701601	LSUM	1	0.5	0.5
70100450	TRAFFIC CONTROL AND PROTECTION, STANDARD 701201	LSUM	1	0.5	0.5
70100825	TRAFFIC CONTROL AND PROTECTION, STANDARD 701456	LSUM	1	0.5	0.5
70102635	TRAFFIC CONTROL AND PROTECTION, STANDARD 701701	LSUM	1	0.5	0.5
70102640	TRAFFIC CONTROL AND PROTECTION, STANDARD 701801	LSUM	1	0.5	0.5
81100300	CONDUIT ATTACHED TO STRUCTURE, 1" DIA., GALVANIZED STEEL	FOOT	50	50	0
81028320	UNDERGROUND CONDUIT, PVC, 1" DIA.	FOOT	10	10	0
81028350	UNDERGROUND CONDUIT, PVC, 2" DIA.	FOOT	2830	1250	1580
81702130	ELECTRIC CABLE IN CONDUIT, 600V (XLP-TYPE USE) 1/C NO. 6	FOOT	5720	2520	3200
83060850	LIGHT POLE, GALVANIZED STEEL, 55 FT. M.H., TENON MOUNT	EACH	3	1	2
83600365	LIGHT POLE FOUNDATION, METAL, 15" BOLT CIRCLE, 10" X 8"	EACH	3	1	2
X0324597	CLOSED CIRCUIT TELEVISION CABINET	EACH	3	1	2
X0326812	CAT 5 ETHERNET CABLE	FOOT	539	419	120
X0326905	CLOSED CIRCUIT TELEVISION DOME CAMERA, IP BASED	EACH	5	3	2
X1400426	MODIFY EXISTING FIBER OPTIC CABINET	EACH	1	0	1
X8710029	FIBER OPTIC CABLE 24 FIBERS, SINGLE MODE	FOOT	550	0	550
X8710103	ETHERNET SWITCH	EACH	2	0	2
X8950130	MODIFY EXISTING LIGHTING CONTROLLER	EACH	4	2	2

REV - MS

FILE NAME :	USER NAME : Timothy.Sharp	DESIGNED -	REVISED -	STATE OF ILLINOIS DEPARTMENT OF TRANSPORTATION	SUMMARY OF QUANTITIES				RTE.	SECTION	COUNTY	TOTAL SHEETS	SHEET NO.
pw://idot-pw.bentley.com/VIDOT/Document/IDOT Offices/District 6/ORD Projects/72E8/ORD/CA/Database/MS81-ahs-3-500.dgn	ORIGIN/CA/Database/MS81-ahs-3-500.dgn	CHECKED -	REVISED -						VAR.	D6 ITS 2026-1	HAN/PIKE	I2	3
Default	PLOT SCALE = #SCALE#	DATE -	REVISED -		CONTRACT NO. 72E8				ILLINOIS FED. AID PROJECT				
	PLOT DATE = 4/6/2026				SCALE:	SHEET	OF	SHEETS	STA.	TO	STA.		

GENERAL NOTES

LEGEND

- R REMOVE
- RR REMOVE AND REPLACE
- ◻ EXISTING HANDHOLE
- ◻◻ EXISTING DOUBLE HANDHOLE
- ⊠ EXISTING CONTROLLER
- ◻ PROPOSED HANDHOLE
- 📷 PROPOSED CCTV CAMERA
- ⊞ EXISTING GULF BOX JUNCTION
- EXISTING CONDUIT
- - - PROPOSED CONDUIT
- 📹 VIDEO VEHICLE DETECTION SYSTEM

- 1 CCTV ARE LOCATION SENSITIVE. PROPOSED EQUIPMENT LOCATIONS ARE APPROXIMATE. TO ENSURE THE OPTIMUM FIELD OF VIEW, ACTUAL LOCATIONS SHALL BE DETERMINED IN THE FIELD BY THE CONTRACTOR, PER THE MANUFACTURER REPRESENTATIVES RECOMMENDATIONS AND THE ENGINEERS APPROVAL.
- 2 PLAN ELEVATIONS - U.S.G.S. MEAN SEA LEVEL DATUM.
- 3 ALL ELEVATIONS SHOWN ON THE PLANS ARE ESTABLISHED FROM U.S.G.S. MEAN SEA LEVEL DATUM.
- 4 U-BOLTS SHALL BE PRODUCED FROM ASTM A276, TYPE 304, 304L, 316, CONDITION A, COLD FINISH, OR AN EQUIVALENT MATERIAL ACCEPTABLE TO THE ENGINEER, ALL NUTS SHALL BE STAINLESS STEEL CONFORMING TO ASTM A94, GRADE 8 (AISI TYPE 304) OR GRADE 8F (AISI TYPE 303), THE NUTS SHALL BE LOCKNUTS WITH NYLON OR STEEL INSERTS AND SEMIFINISHED HEXAGONAL HEADS EQUIVALENT TO THE FINISHED HEX SERIES OF THE AMERICAN NATIONAL STANDARD, ALL WASHERS SHALL BE STAINLESS STEEL CONFORMING TO ASTM 240, TYPE 302 OR 304.
- 5 ALL BOLTS, SCREWS, NUTS AND WASHERS SHALL BE STAINLESS STEEL. ANTI-SEIZE PASTE COMPOUND SHALL BE USED ON ALL MOUNTING HARDWARE FIELD CONNECTIONS. ALL CCTV MOUNTING METHODS AND MOUNTING MATERIAL SHALL BE PRE-APPROVED BY THE ENGINEER.
- 6 UNDERGROUND CABLE MARKING TAPE SHALL BE INSTALLED WITH ALL TRENCH & BACKFILL FOR ELECTRICAL WORK IN ACCORDANCE WITH ARTICLES 015.03 (d) & 1066.05 OF THE STANDARD SPECIFICATIONS.
- 7 A 1/4" DIA. NYLON ROPE SHALL BE INSTALLED IN ALL CONDUIT RUNS. THE COST OF PULL ROPE SHALL BE INCLUDED IN THE PROPOSED ELECTRIC CABLE INSTALLATION IN THAT CONDUIT.
- 8 THE CONTRACTOR SHALL NOT DRILL ANY HOLES IN THE BEAMS, DECK, OR SUBSTRUCTURE OF THE BRIDGE, UNLESS OTHERWISE APPROVED BY THE ENGINEER.
- 9 ALL GROUND RODS SUPPLIED FOR THIS PROJECT SHALL BE 3/4" DIAMETER X 12'-0" LONG.
- 10 THE LOCATION OF EXISTING WATER MAINS, GAS MAINS, SEWERS, ELECTRIC POWER LINES, TELEPHONE LINES AND OTHER UTILITIES AS SHOWN ON THE PLANS ARE BASED ON CAREFUL FIELD INVESTIGATION AND THE BEST INFORMATION AVAILABLE, BUT THEY ARE NOT GUARANTEED. IT SHALL BE THE CONTRACTOR'S RESPONSIBILITY TO ASCERTAIN THEIR EXACT LOCATION FROM THE UTILITY COMPANIES AND BY FIELD INSPECTION.
- 11 ALL UTILITIES SHALL BE LOCATED IN FIELD PRIOR TO ANY ATTEMPT TO CONSTRUCT ANY COMPONENT OF THE VARIOUS CCTV CAMERA SYSTEM. ILLINOIS STATE LAW REQUIRES A 48-HOUR NOTICE BE GIVEN TO UTILITIES BEFORE DIGGING. FIELD MARKING OF FACILITIES MAY BE OBTAINED BY PROVIDING A MINIMUM OF 96-HOURS ADVANCE NOTICE TO THE RESIDENT ENGINEER SO THAT THE UTILITY COMPANIES CAN BE NOTIFIED.
- 12 COORDINATION WITH THE DEPARTMENTS BUREAU OF OPERATIONS IS REQUIRED BEFORE ANY TRENCHING SHALL BE DONE TO LOCATE HIGHWAY LIGHTING/PUMP STATION FACILITIES. PH: (217)558-6716 OR (217)622-0608.
- 13 THE AREAS THAT ARE DISTURBED DUE TO THE DIGGING OR TRENCHING SHALL BE COMPLETED ON A WEEKLY BASIS USING SEEDING, CLASS 2 AND MULCH METHOD (AND SHALL CONFORM TO THE REQUIREMENTS OF SECTION 251 OF THE STANDARD SPECIFICATIONS EXCEPT THAT NO EMULSIFIED ASPHALT SHALL BE USED. THE COST SHALL BE INCIDENTAL TO THE CONTRACT.
- 14 THE CONTRACTOR MUST COORDINATE AND COOPERATE WITH THE DEPARTMENT AND THE INVOLVED PARTIES AS DIRECTED BY THE DEPARTMENT
- 15 EXISTING CONDUIT AND PULL POINT LOCATIONS TAKEN FROM HISTORICAL DATA. CONTRACTOR SHALL FIELD VERIFY EXISTING CONDUIT SIZES AND LOCATIONS PRIOR TO INSTALLING PROPOSED FIBER OPTIC CABLE WITHIN EXISTING CONDUIT.
- 16 BENDING RADIUS OF FIBER OPTIC CABLE SHALL NOT EXCEED SIX (6) INCHES.
- 17 EXACT FIELD LOCATIONS OF ITS EQUIPMENT SHALL BE AS DIRECTED BY THE ENGINEER, THE CONTRACTOR SHALL TAKE CARE NOT TO INSTALL ITS EQUIPMENT IN DRAINAGE AREAS.
- 18 THE CONTRACTOR SHALL SUBMIT SHOP DRAWINGS, CONSTRUCTION METHODOLOGIES, PRODUCT MANUFACTURER SPECIFICATIONS, OWNERS MANUALS, AND USER MANUALS BEFORE PROCURING AND INSTALLING ANY ITS EQUIPMENT AS PART OF THIS CONTRACT. ALL PROPOSED ITS WORK SHALL BE REVIEWED AND APPROVED BY THE DEPARTMENT.
- 19 THE CONTRACTOR SHALL BE RESPONSIBLE FOR COORDINATING TRAFFIC CONTROL FOR THE INSTALLATION OF ITS RELATED EQUIPMENT WITH OTHER CONTRACTS AND WORK IN THE AREA.

FILE NAME :	USER NAME : Timothy.Sharp	DESIGNED -	REVISED -	STATE OF ILLINOIS DEPARTMENT OF TRANSPORTATION	LEGEND AND NOTES	RTE.	SECTION	COUNTY	TOTAL SHEETS	SHEET NO.	
pw://idot-pw.bentley.com/PWIDOT/Documents/IDOT Offices/District 6/ORD Projects/72E81/ORD/72E81/CADsheets/72E81-sh4-obr-leg.dgn	ORIGIN	REVISED -	REVISED -			VAR.	D6 ITS 2026-I	HAN/PKE	12	4	
Default	PLOT SCALE : #SCALE#	CHECKED -	REVISED -			CONTRACT NO. 72E81					
	PLOT DATE : 4/6/2026	DATE -	REVISED -			SCALE:	SHEET	OF	SHEETS	STA.	TO
ILLINOIS FED. AID PROJECT											



LOCATION #1

LOCATION #2

LOCATION #3



Google Earth
 Image © 2023 Airbus
 © 2023 Google

FILE NAME =	USER NAME = Timothy.Sharp	DESIGNED -	REVISED -
pw://idot-pw.bentley.com/PWIDOT/Documents/IDOT Offices/District 6/ORD Projects/72E81/ORD/CAD/sheets/72E81-sht-5-7-location		CHECKED -	REVISED -
Default	PLOT DATE = 4/6/2026	DATE -	REVISED -

STATE OF ILLINOIS
 DEPARTMENT OF TRANSPORTATION

LOCATION MAP HANCOCK CO.

SCALE:	SHEET	OF	SHEETS	STA.	TO	STA.
--------	-------	----	--------	------	----	------

RTE.	SECTION	COUNTY	TOTAL SHEETS	SHEET NO.
VAR.	D6 ITS 2026-I	HAN/PKE	12	5
CONTRACT NO. 72E81			ILLINOIS FED. AID PROJECT	

LOCATION #4



LOCATION #5

FILE NAME :	USER NAME : Timothy.Sharp	DESIGNED -	REVISED -	STATE OF ILLINOIS DEPARTMENT OF TRANSPORTATION	LOCATION MAP – PIKE CO.				RTE.	SECTION	COUNTY	TOTAL SHEETS	SHEET NO.
pw://idot-pw.bentley.com/PWIDOT/Documents/IDOT Offices/District 6/ORD Projects/72E81/ORD/CADsheets/72E81-sht-5-7-location		ORIGIN	REVISED		SCALE	SHEET	OF	SHEETS	STA.	TO STA.	SANGAMON	12	6
Default	PLOT SCALE : #SCALE#	CHECKED -	REVISED -								CONTRACT NO. 72E81		
	PLOT DATE : 4/6/2026	DATE -	REVISED -								<small>ILLINOIS FED. AID PROJECT</small>		

LOCATION #1



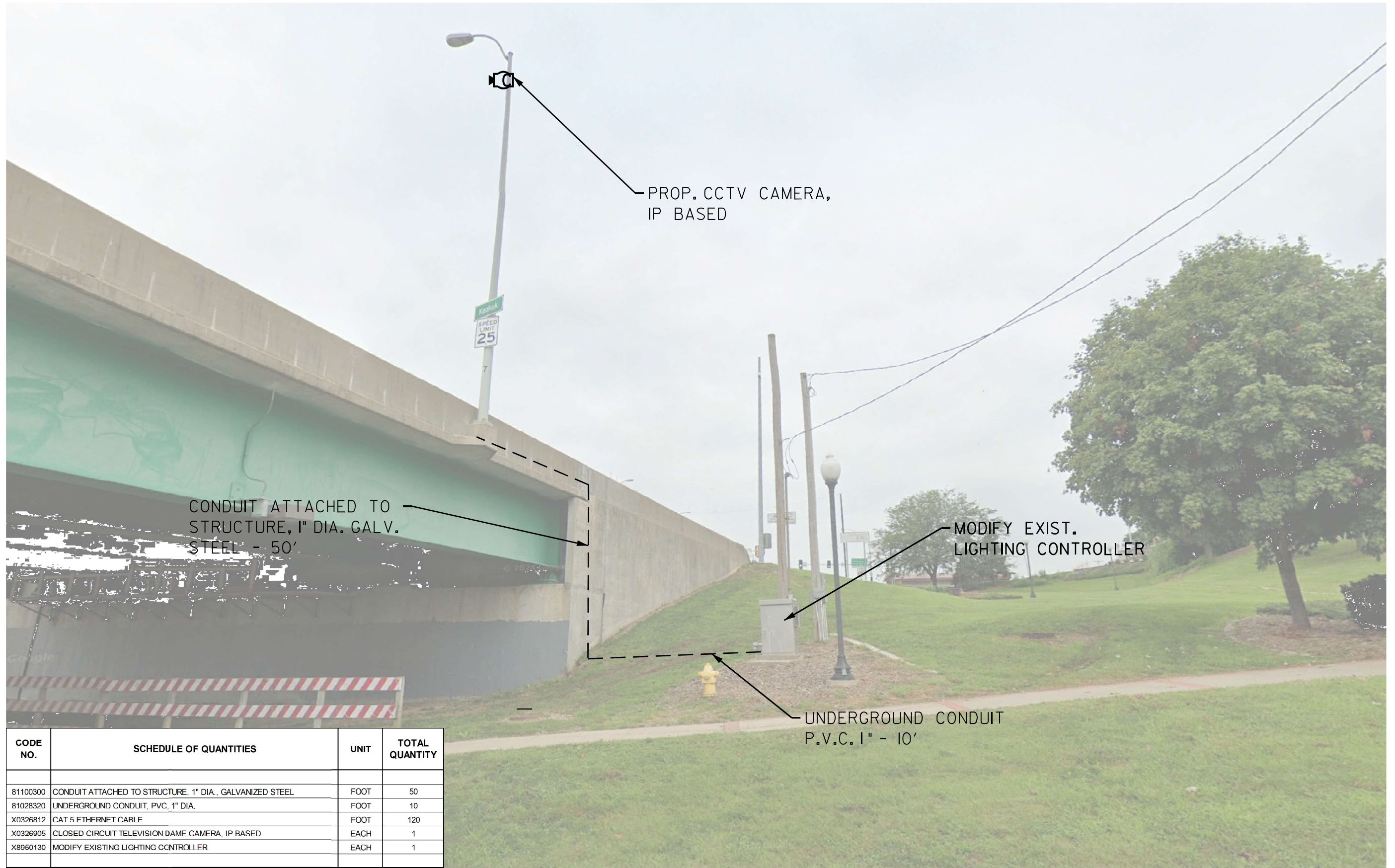
Google Earth
Image © 2023 Airbus
© 2023 Google

FILE NAME =	USER NAME = timothysharp	DESIGNED -	REVISED -
pw://idot-pw.bentley.com/PWIDOT/Documents/IDOT Offices/District 6/ORD Projects/72E81/ORD/CAD/sheets/72E81-sht-5-7-location		CHECKED -	REVISED -
Default	PLOT SCALE = *SCALE*	DATE -	REVISED -
	PLOT DATE = 5/11/2026		

STATE OF ILLINOIS
DEPARTMENT OF TRANSPORTATION

LOCATION 1			
SCALE:	SHEET	OF SHEETS	STA. TO STA.

RTE.	SECTION	COUNTY	TOTAL SHEETS	SHEET NO.
VAR.	D6 ITS 2026-1	SANGAMON	12	7
CONTRACT NO. 72E81			ILLINOIS FED. AID PROJECT	



CODE NO.	SCHEDULE OF QUANTITIES	UNIT	TOTAL QUANTITY
81100300	CONDUIT ATTACHED TO STRUCTURE, 1" DIA. GALVANIZED STEEL	FOOT	50
81028320	UNDERGROUND CONDUIT, PVC, 1" DIA.	FOOT	10
X0326812	CAT 5 ETHERNET CABLE	FOOT	120
X0326905	CLOSED CIRCUIT TELEVISION CAMERA, IP BASED	EACH	1
X8950130	MODIFY EXISTING LIGHTING CONTROLLER	EACH	1

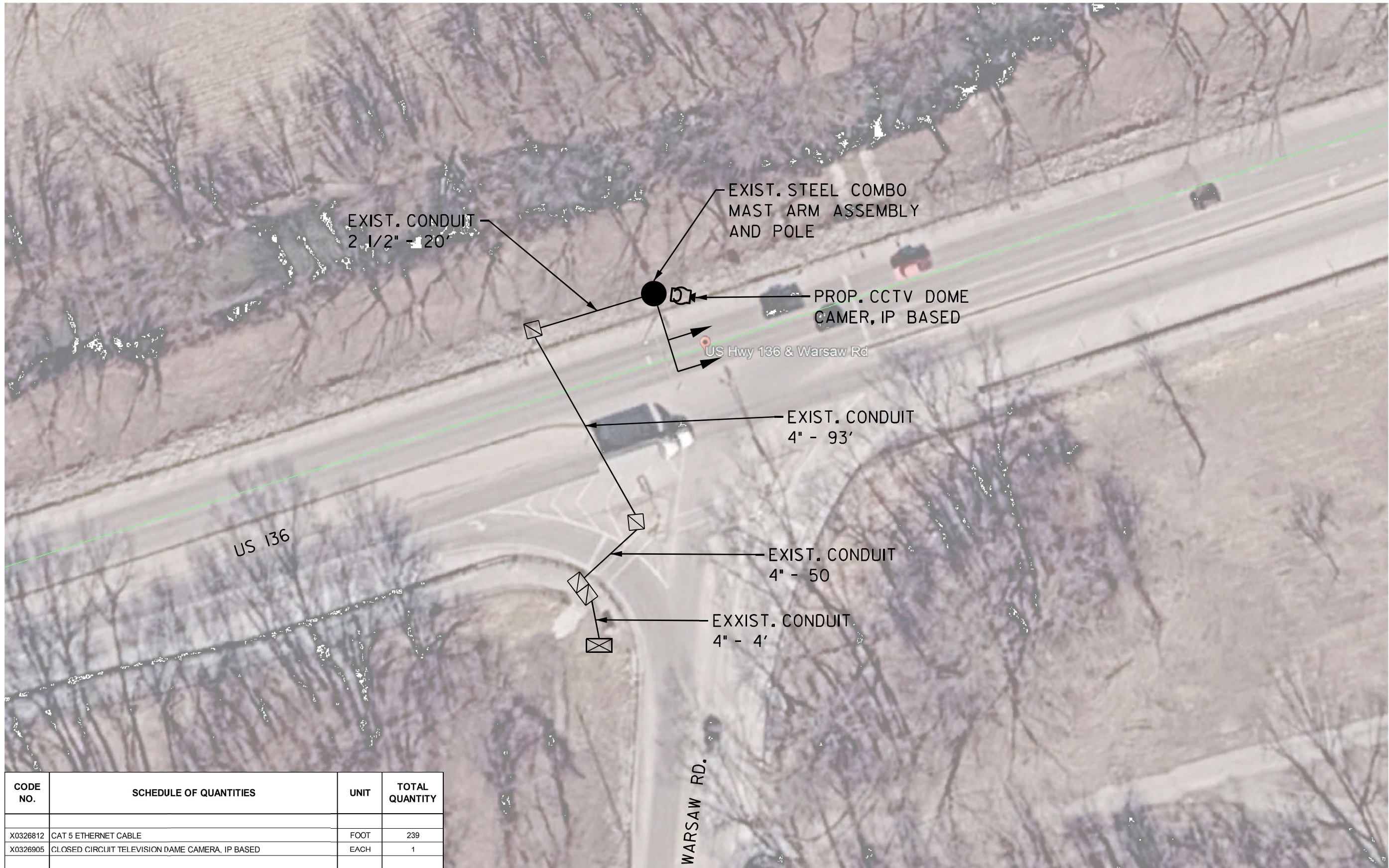
MODEL: D:\draft
 FILE NAME: p:\illinois\work\projects\DOT_0_cas\District_6\ORD_Projects\72E81\CAD\Drawings\72E81-SubB-12-Plans.dwg

USER NAME = timothy.sharp	DESIGNED -	REVISED -
PLOT SCALE = \$S\$CALES	DRAWN -	REVISED -
PLOT DATE = 6/30/2026	CHECKED -	REVISED -
	DATE -	REVISED -

STATE OF ILLINOIS
DEPARTMENT OF TRANSPORTATION

US 136 AT KEOKUK BRIDGE			
SCALE:	SHEET	OF SHEETS	STA. TO STA.

RTE.	SECTION	COUNTY	TOTAL SHEETS	SHEET NO.
VAR.	D6 ITS 2026-1	HAN/PIKE	12	8
			CONTRACT NO. 72E81	
		ILLINOIS	FED. AID PROJECT	



CODE NO.	SCHEDULE OF QUANTITIES	UNIT	TOTAL QUANTITY
X0326812	CAT 5 ETHERNET CABLE	FOOT	239
X0326905	CLOSED CIRCUIT TELEVISION DAME CAMERA, IP BASED	EACH	1

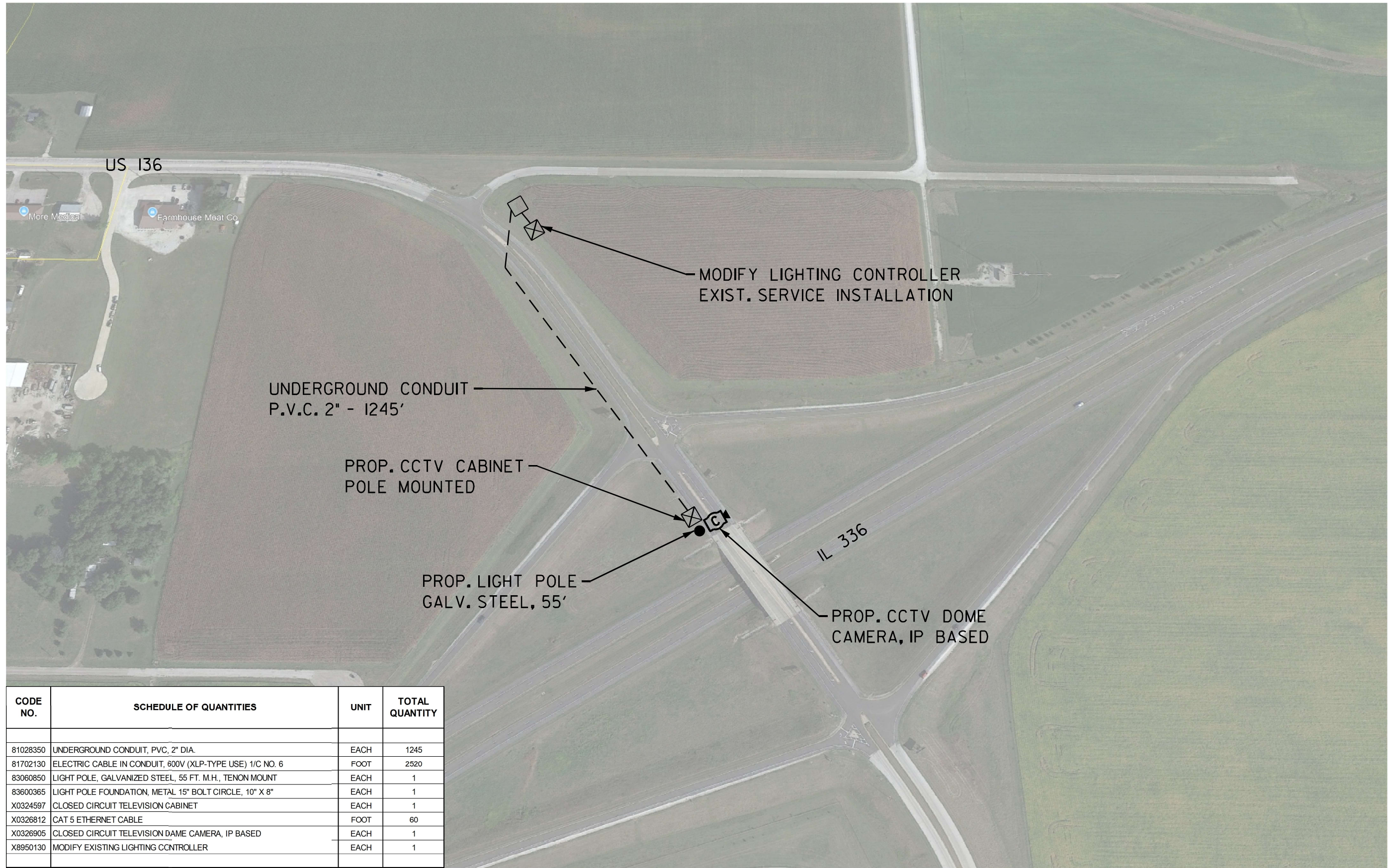
MODEL: D:\draft
 FILE NAME: p:\illinois\work\dot\DOT_0_caf\District_6\ORBD_Projects\72E81\CAD\Drawings\Sheet72E81-12-11-26.dwg

USER NAME = timothy.sharp	DESIGNED -	REVISED -
PLOT SCALE = \$SCALE\$	DRAWN -	REVISED -
PLOT DATE = 6/30/2026	CHECKED -	REVISED -
	DATE -	REVISED -

STATE OF ILLINOIS
DEPARTMENT OF TRANSPORTATION

US 136 AT WARSAW RD.
 SCALE: SHEET OF SHEETS STA. TO STA.

RTE.	SECTION	COUNTY	TOTAL SHEETS	SHEET NO.
VAR.	D6 ITS 2026-1	HAN/PIKE	12	9
ILLINOIS FED. AID PROJECT			CONTRACT NO. 72E81	



CODE NO.	SCHEDULE OF QUANTITIES	UNIT	TOTAL QUANTITY
81028350	UNDERGROUND CONDUIT, PVC, 2" DIA.	EACH	1245
81702130	ELECTRIC CABLE IN CONDUIT, 600V (XLP-TYPE USE) 1/C NO. 6	FOOT	2520
83060850	LIGHT POLE, GALVANIZED STEEL, 55 FT. M.H., TENON MOUNT	EACH	1
83600365	LIGHT POLE FOUNDATION, METAL 15" BOLT CIRCLE, 10" X 8"	EACH	1
X0324597	CLOSED CIRCUIT TELEVISION CABINET	EACH	1
X0326812	CAT 5 ETHERNET CABLE	FOOT	60
X0326905	CLOSED CIRCUIT TELEVISION DOME CAMERA, IP BASED	EACH	1
X8950130	MODIFY EXISTING LIGHTING CONTROLLER	EACH	1

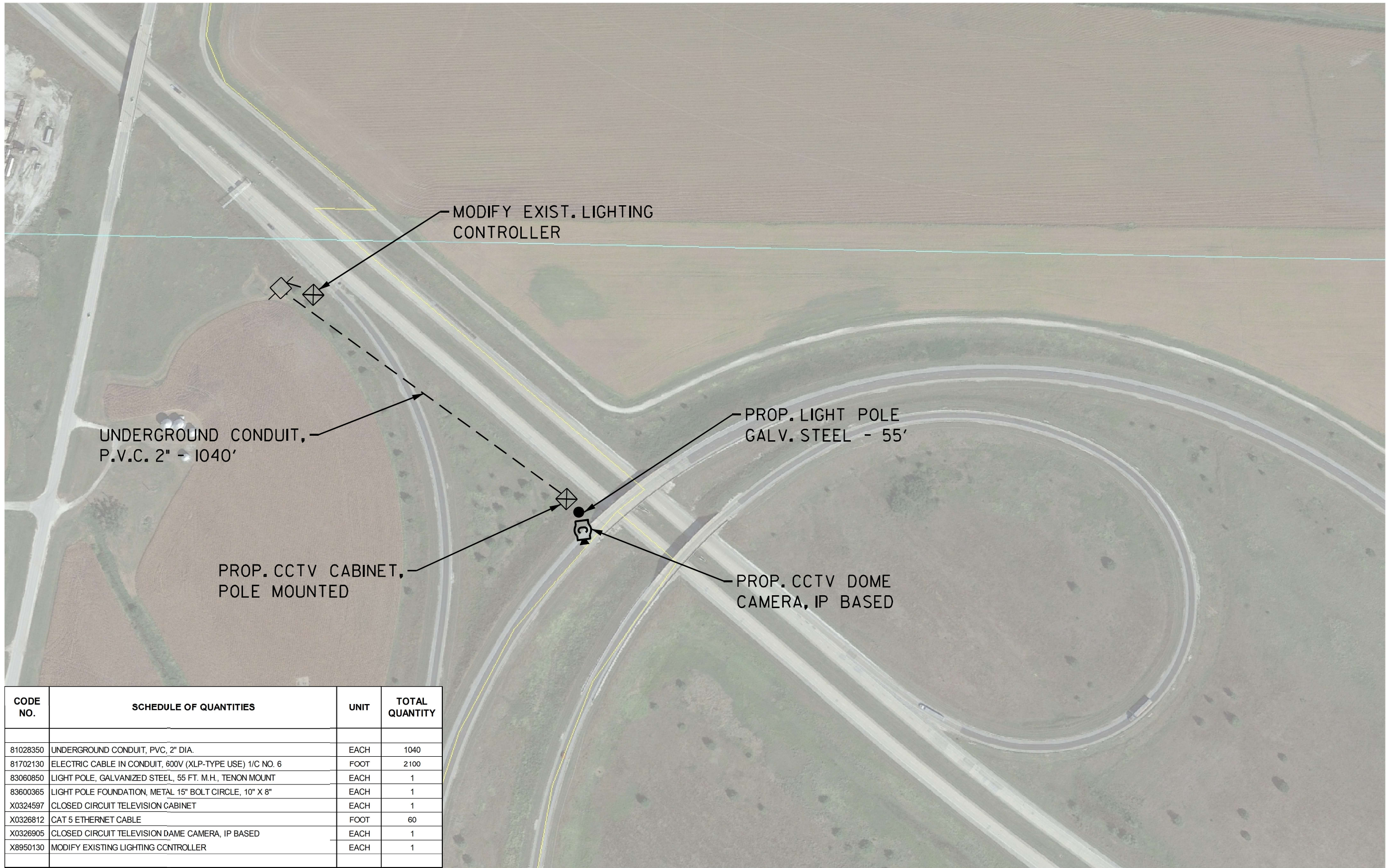
MODEL: D:\draft
 FILE NAME: p:\illinois\work\projects\DOT_0_cas\District_6\ORD_Projects\72E81\CAD\Drawings\Sheet\72E81-12-11-2026.dwg

USER NAME = timothy.sharp	DESIGNED -	REVISED -
PLOT SCALE = \$SCALE\$	DRAWN -	REVISED -
PLOT DATE = 6/30/2026	CHECKED -	REVISED -
	DATE -	REVISED -

STATE OF ILLINOIS
DEPARTMENT OF TRANSPORTATION

IL 336 AT US 136 (CARTHAGE)
 SCALE: SHEET OF SHEETS STA. TO STA.

RTE.	SECTION	COUNTY	TOTAL SHEETS	SHEET NO.
VAR.	D6 ITS 2026-1	HAN/PIKE	12	10
CONTRACT NO. 72E81				
ILLINOIS FED. AID PROJECT				



CODE NO.	SCHEDULE OF QUANTITIES	UNIT	TOTAL QUANTITY
81028350	UNDERGROUND CONDUIT, PVC, 2" DIA.	EACH	1040
81702130	ELECTRIC CABLE IN CONDUIT, 600V (XLP-TYPE USE) 1/C NO. 6	FOOT	2100
83060850	LIGHT POLE, GALVANIZED STEEL, 55 FT. M.H., TENON MOUNT	EACH	1
83600365	LIGHT POLE FOUNDATION, METAL 15" BOLT CIRCLE, 10" X 8"	EACH	1
X0324597	CLOSED CIRCUIT TELEVISION CABINET	EACH	1
X0326812	CAT 5 ETHERNET CABLE	FOOT	60
X0326905	CLOSED CIRCUIT TELEVISION DOME CAMERA, IP BASED	EACH	1
X8950130	MODIFY EXISTING LIGHTING CCNTROLLER	EACH	1

MODEL: D:\draft
 FILE NAME: p:\illinois\work\projects\DOT_0_cad\District_6\ORD_Projects\72EB1\CAD\Drawings\CAD\Sheet\72EB1_Sht-8-12.dwg

USER NAME = timothy.sharp	DESIGNED -	REVISED -
PLOT SCALE = 55CALES	DRAWN -	REVISED -
PLOT DATE = 6/30/2026	CHECKED -	REVISED -
	DATE -	REVISED -

STATE OF ILLINOIS
DEPARTMENT OF TRANSPORTATION

I-72 AT I-172 (TRUMPET INTERCHANGE)			
SCALE:	SHEET	OF SHEETS	STA. TO STA.

RTE.	SECTION	COUNTY	TOTAL SHEETS	SHEET NO.
VAR.	D6 ITS 2026-1	HAN/PIKE	12	11
			CONTRACT NO. 72E81	
ILLINOIS FED. AID PROJECT				

