

STATE OF ILLINOIS  
DEPARTMENT OF TRANSPORTATION

F.A. RTE.	SECTION	COUNTY	TOTAL SHEETS	SHEET NO.
**	D6 CJS 2026-3	ILLINOIS	32	1
CONTRACT NO. 72372				

\*FAI 155, FAI 55, & FAP 769  
\*\* I-155, I-55, & IL 108  
\*\*\*LOGAN & MONTGOMERY  
D-96-061-24

**HIGHWAY CLASSIFICATION**  
**I-155 & I-55 INTERSTATE**  
**IL 108 MINOR ARTERIAL**

**AVERAGE DAILY TRAFFIC YEAR**  
**I-155 ADT: 7,202 (2022)**  
**I-55 ADT: 27,463 (2025)**  
**IL 108 ADT: 1,801 (2025)**

**PROPOSED  
HIGHWAY PLANS**

**FAI 155, FAI 55, & FAP 769 (I 155, I-55, & IL 108)**  
**SECTION D6 CJS 2026-3**  
**PROJECT NHPP-EY42(841)**  
**CRACK & JOINT SEALING**  
**LOGAN & MONTGOMERY COUNTIES**



**I-155:**  
GROSS LENGTH = 16,029.09 FT. = 3.04 MILE  
NET LENGTH = 16,029.09 FT. = 3.04 MILE

**I-55:**  
GROSS LENGTH = 38,936.35 FT. = 7.37 MILE  
NET LENGTH = 38,480.68 FT. = 7.29 MILE

**IL 108:**  
GROSS LENGTH = 4,644.42 FT. = 0.88 MILE  
NET LENGTH = 4,382.26 FT. = 0.83 MILE

I-155  
PROJECT ENDS  
STA 546+25.98

C-96-083-24

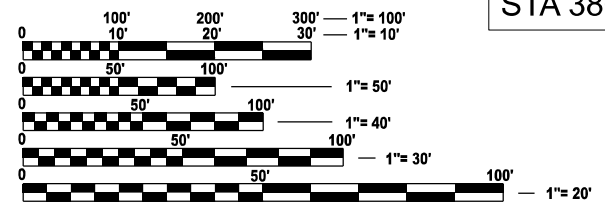
I-55  
PROJECT BEGINS  
STA 1620+10.00

IL 108  
STA 24+57.58  
STA 71+02.00

I-55  
STA 1801+11.70 BK=  
STA 1801+19.15 AH

I-155  
STA 386+08.95 BK=  
STA 386+12.15 AH

I-155  
PROJECT BEGINS  
STA 385+75.70

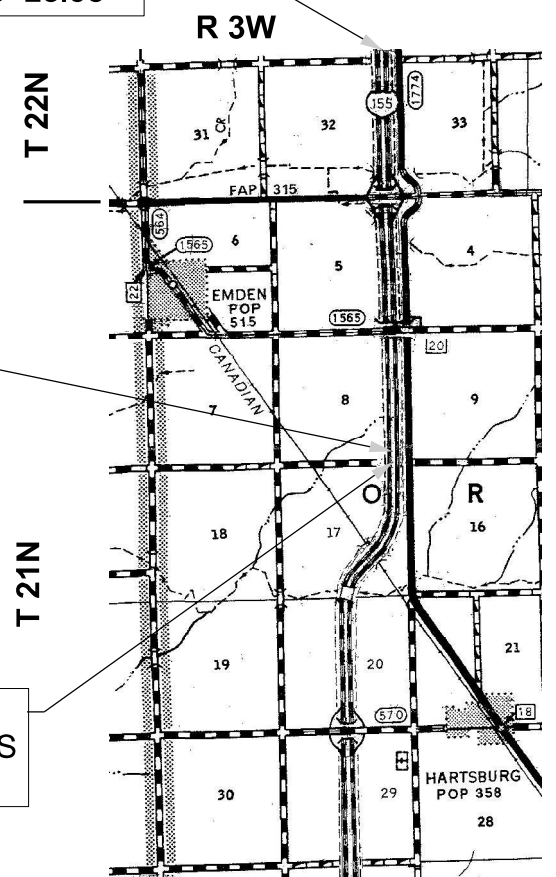


FULL SIZE PLANS HAVE BEEN PREPARED USING STANDARD ENGINEERING SCALES. REDUCED SIZED PLANS WILL NOT CONFORM TO STANDARD SCALES. IN MAKING MEASUREMENTS ON REDUCED PLANS, THE ABOVE SCALES MAY BE USED.

J.U.L.I.E.  
JOINT UTILITY LOCATION INFORMATION FOR EXCAVATION  
1-800-892-0123  
OR 811

PROJECT ENGINEER : JAY EDWARDS 217-785-0597  
PROJECT MANAGER : JON COX 217-782-1378

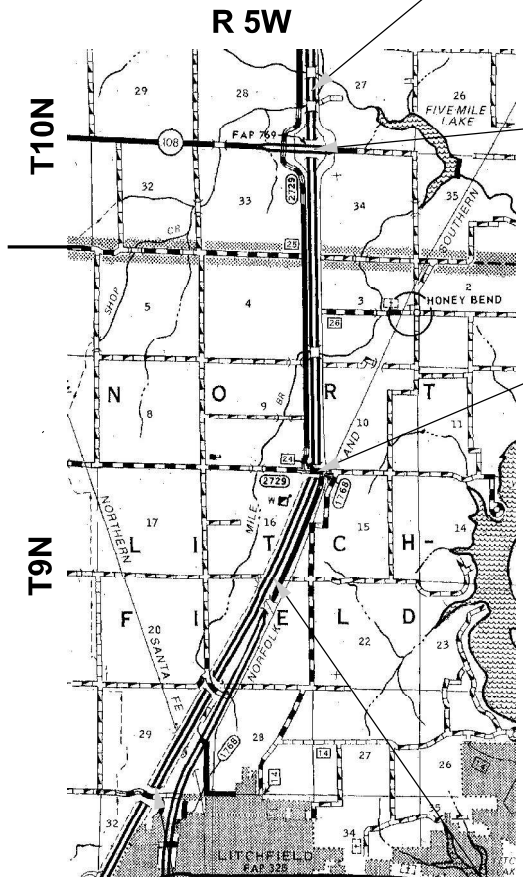
CONTRACT NO. 72372



BRIDGE OMISSIONS I-155

I-55:  
SN 068-0048 STA 93+01.51 TO STA 95+29.34  
SN 068-0049 STA 92+04.08 TO STA 94+31.91

IL 108:  
SN 068-0043 STA 49+22.01 TO STA 51+84.17



I-55

I-55  
PROJECT ENDS  
STA 142+58.00

I-55  
STA 1869+17.80 BK=  
STA 2+22.00 AH

STATE OF ILLINOIS  
DEPARTMENT OF TRANSPORTATION

SUBMITTED May 8, 2026  
*Teresa C. Price*  
REGIONAL ENGINEER

June 26, 2026  
*[Signature]*  
ENGINEER OF DESIGN AND ENVIRONMENT

June 26, 2026  
*[Signature]*  
DIRECTOR OF HIGHWAYS PROJECT IMPLEMENTATION

**PRINTED BY THE AUTHORITY  
OF THE STATE OF ILLINOIS**

**GENERAL NOTES**

1 THE CONTRACTOR SHALL MAKE EVERY EFFORT TO AVOID DAMAGE OR COVERAGE OF THE EXSITING PAVEMENT MARKINGS WITH CRACK SEALANT. THE CONTRACTOR SHALL NOTIFY THE ENGINEER OF ANY ANTICIPATED PAVEMENT MARKING CONFLICTS AND ANY DAMAGE SHOULD BE DOCUMENTED. EXCESS SEALANT SHOULD NOT BE SQUEEGED OUT OVER EXISTING PAVEMENT MARKINGS. THE ENGINEER SHOULD DOCUMENT ANY CONFLICTS OR DAMAGE. THE ENGINEER SHOULD CONTACT THE DISTRICT 6 TRAFFIC OPERATIONS ENGINEER AT (217) 785-5306 IF MORE THAN 25% OF THE EXISTING PAVEMENT MARKINGS ARE DAMAGED OR COVERED BY SEALANT.

**HIGHWAY STANDARDS**

- 000001-09 STANDARD SYMBOLS, ABBREVIATIONS, AND PATTERNS
- 701006-05 OFF-RD OPERATIONS, 2L, 2W, 15' TO 24" FROM EDGE OF PAVEMENT
- 701101-05 OFF-RD OPERATIONS, MULTI LANE, 15' TO 24" FROM PAVEMENT EDGE
- 701306-04 LANE CLOSURE, 2L, 2W SLOW MOVING OPERATIONS DAY ONLY, FOR SPEEDS  $\geq$  45 MPH
- 701426-09 LANE CLOSURE, MULTILANE, INTERMITTENT OR MOVING OPERATION, FOR SPEED  $\geq$  45 MPH
- 701428-01 TRAFFIC CONTROL SET UP AND REMOVAL, FREEWAY/EXPRESS WAY
- 701456-05 PARTIAL EXIT RAMP CLOSURE, FREEWAY/EXPRESSWAY
- 701901-11 TRAFFIC CONTROL DEVICES

**RATE TABLE**

THE FOLLOWING RATES OF APPLICATION HAVE BEEN ASSUMED IN CALCULATING PLAN QUANTITIES.

CRACK FILLING (NON-ROUTED CRACKS) .018 POUND/(LIN FT)  
 CRACK FILLING (ROUTED CRACKS) .035 POUND/(LIN FT)

**COMMITMENTS**


NONE

**INDEX OF SHEETS**

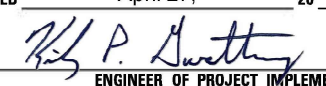
- 1 COVER SHEET
- 2 INDEX OF SHEETS, LISTS OF STANDARDS, GENERAL NOTES AND COMMITMENTS
- 3 SUMMARY OF QUANTITIES
- 4 SCHEDULE OF QUANTITIES
- 5-6 TYPICAL SECTIONS (2)
- 7-13 PLAN SHEETS I-155 (7)
- 14-29 PLAN SHEETS I-55 (16)
- 30 31 PLAN SHEETS IL 108 (2)
- 32 DETAILS

**STATE OF ILLINOIS  
DEPARTMENT OF TRANSPORTATION  
DIVISION OF HIGHWAYS  
DISTRICT 6**

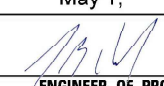
---

EXAMINED April 28, 2026  
  
 ENGINEER OF OPERATIONS

---

EXAMINED April 27, 2026  
  
 ENGINEER OF PROJECT IMPLEMENTATION

---

EXAMINED May 1, 2026  
  
 ENGINEER OF PROGRAM DEVELOPMENT

MODEL: GENERAL NOTE (Sheet)  
FILE NAME: c:\p\work\wtd\coj\wd1010047172372-shh-General Notes.dgn

	USER NAME = Jonathan.Cox	DESIGNED -	REVISED -	<b>STATE OF ILLINOIS DEPARTMENT OF TRANSPORTATION</b>	<b>GENERAL NOTES, HIGHWAY STANDARDS, INDEX OF SHEETS, &amp; COMMITMENTS</b>	SCALE:	SHEET 1 OF 1 SHEETS	STA.	TO STA.	F.A.* RTE.	SECTION	COUNTY	TOTAL SHEETS	SHEET NO.	
		DRAWN -	REVISED -			**	D6 CJS 2026-3							32	2
		CHECKED -	REVISED -			CONTRACT NO. 72372									
	PLOT DATE = 4/13/2026	DATE -	REVISED -			ILLINOIS FED. AID PROJECT *****LOGAN/MONTGOMERY									



**CRACK AND JOINT SEALING SCHEDULE**

Label	Sta.	Sta.	Length (FT)	TRANSV CRACKS (@12')	Appl Rate for Trans Joints (LB/FT)	# of EOP Joints	Appl Rate for EOP Joints (LB/FT)	45100100 CRACK ROUTING (PVT) (FOOT)	45100200 CRACK FILLING (POUND)
I-155	385+86.00	to 386+08.95	23			1	0.18		4.1
STA EQ STA 386+08.95 BK = STA 386+12.15 AH									
I-155	386+12.15	to 546+25.57	16,013			5	0.18		14412.1
155_US136RAMPA	0+00.00	to 24+36.86	2,437			2	0.18		877.3
	15+65.21	to 24+36.86	872			1	0.18		156.9
155_US136RAMPD	0+00.00	to 3+00.00	300			1	0.18		54.0
	3+00.00	to 18+04.40	1,504			2	0.18		541.6
155_US136RAMPB	0+00.00	to 2+90.00	290			1	0.18		52.2
	2+90.00	to 17+99.32	1,509			2	0.18		543.4
155_US136RAMPC	0+00.82	to 16+54.00	1,653			1	0.18		297.6
	16+54.00	to 24+40.34	786			2	0.18		283.1
I-155 NBDL	385+86.00	to 386+08.95	23	1	0.35		Add 5%	12.6	4.7
STA EQ STA 386+08.95 BK = STA 386+12.15 AH									
I-155 NBDL	386+12.15	to 546+25.57	16,013	3	0.35		Add 5%	37.8	13.7
I-155 NBPL	385+86.00	to 386+08.95	23	1	0.35		Add 5%	12.6	4.7
STA EQ STA 386+08.95 BK = STA 386+12.15 AH									
I-155 NBPL	386+12.15	to 546+25.57	16,013	2	0.35		Add 5%	25.2	9.5
I-155 SBDL	385+86.00	to 386+08.95	23	1	0.35		Add 5%	12.6	4.7
STA EQ STA 386+08.95 BK = STA 386+12.15 AH									
I-155 SBDL	386+12.15	to 546+25.57	16,013	2	0.35		Add 5%	25.2	9.5
I-155 SBPL	385+86.00	to 386+08.95	23	1	0.35		Add 5%	12.6	4.7
STA EQ STA 386+08.95 BK = STA 386+12.15 AH									
I-155 SBPL	386+12.15	to 546+25.57	16,013	3	0.35		Add 5%	37.8	13.7
155_US136RAMPA	0+00.00	to 24+36.86	2,437	1	0.35		Add 5%	12.6	4.4
155_US136RAMPD	0+00.00	to 18+04.40	1,804	1	0.35		Add 5%	12.6	4.4
155_US136RAMPC	0+00.00	to 24+40.34	2,440	1	0.35		Add 5%	12.6	4.4
<b>I-155 SUB-TOTAL</b>								<b>214</b>	<b>17,300</b>
I-55	1620+10.00	to 1801+11.70	18,102			6	0.18		19549.8
STA EQ STA 1801+11.70 BK = STA 1801+19.15 AH									
I-55	1801+19.15	to 1869+17.80	6,799			6	0.18		7342.5
STA EQ STA 1869+17.80 BK = STA 2+22.00 AH									
I-55	2+22.00	to 92+04.08	8,982			6	0.18		9700.6
SB BRIDGE OMISSION STA 92+04.08 TO STA 94+31.91									
I-55 NB	92+04.08	to 93+01.51	97			3	0.18		52.6
NB BRIDGE OMISSION STA 93+01.51 TO STA 95+29.34									
I-55 SB	94+31.91	to 95+29.34	97			3	0.18		52.6
I-55	95+29.34	to 143+00.00	4,771			6	0.18		5152.3
RAMP R101	0+00.00	to 20+06.00	2,006			2	0.18		722.2
	20+06.00	to 27+57.71	752			1	0.18		135.3
RAMP R102	0+00.00	to 2+81.00	281			1	0.18		50.6
	2+81.00	to 22+80.37	1,999			2	0.18		719.8
RAMP R100	0+00.00	to 2+82.62	283			1	0.18		50.9
	2+82.65	to 22+72.40	1,990			2	0.18		716.3
RAMP R103	0+00.00	to 20+28.35	2,028			2	0.18		730.2
	20+28.35	to 27+57.97	730			1	0.18		131.3
<b>I-55 SUB-TOTAL A</b>								<b>0.0</b>	<b>45,108</b>

**CRACK AND JOINT SEALING SCHEDULE**

Label	Sta.	Sta.	Length (FT)	TRANSV ERSE CRACKS (@12'/C)	Appl Rate for Long Joints (LB/FT)	# of EOP Joints	Appl Rate for EOP Joints (LB/FT)	45100100 CRACK ROUTING (PVT) (FOOT)	45100200 CRACK FILLING (POUND)
I-55 NBDL	1620+10.00	to 1801+11.70	18,102	3	0.35		Add 5%	37.8	13.7
I-55 NBPL	1620+10.00	to 1801+11.70	18,102	2	0.35		Add 5%	25.2	9.5
I-55 NBDL	95+29.34	to 143+00.00	4,771	2	0.35		Add 5%	25.2	9.5
I-55 NBPL	95+29.34	to 143+00.00	4,771	1	0.35		Add 5%	12.6	4.7
I-55 SBDL	1620+10.00	to 1801+11.70	18,102	2	0.35		Add 5%	25.2	9.5
I-55 SBPL	1620+10.00	to 1801+11.70	18,102	2	0.35		Add 5%	25.2	9.5
I-55 SBDL	95+29.34	to 143+00.00	4,771	1	0.35		Add 5%	12.6	4.7
I-55 SBPL	95+29.34	to 143+00.00	4,771	2	0.35		Add 5%	25.2	9.5
RAMP R101	0+00.00	to 27+57.71	2,758	1	0.35		Add 5%	12.6	4.7
RAMP R102	0+00.00	to 22+80.37	2,280	1	0.35		Add 5%	12.6	4.7
RAMP R100	0+00.00	to 22+72.40	2,272	2	0.35		Add 5%	25.2	9.5
RAMP R103	0+00.00	to 27+57.97	2,758	2	0.35		Add 5%	25.2	9.5
<b>I-55 SUB-TOTAL B</b>								<b>264.6</b>	<b>98.7</b>
<b>I-55 TOTAL</b>								<b>265</b>	<b>45,207</b>
IL 108	24+57.58	to 29+96.00	538			2	0.18		193.8
IL 108	29+96.00	to 43+29.00	1,333			2	0.18		479.9
IL 108	43+29.00	to 48+59.00	530			3	0.18		286.2
IL 108	48+59.00	to 49+22.00	63			2	0.18		22.7
BRIDGE OMISSION STA 49+22.00 TO STA 51+84.17									
IL 108	51+84.32	to 52+24.00	40			2	0.18		14.3
IL 108	52+24.00	to 57+77.00	553			3	0.18		298.6
IL 108	57+77.00	to 69+48.00	1,171			2	0.18		421.6
IL 108	69+48.00	to 71+02.00	154			3	0.18		83.2
W Frontage Rd	8+16.00	to 9+79.00	163			3	0.18		88.0
W Frontage Rd	10+26.00	to 11+96.00	170			3	0.18		91.8
E Frontage Rd	7+87.00	to 9+79.00	192			3	0.18		103.7
E Frontage Rd	10+25.00	to 11+31.00	106			3	0.18		57.2
IL 108 WB	24+57.58	to 49+22.00	2,464	18	0.35		Add 5%	302.4	111.3
IL 108 EB	24+57.58	to 49+22.00	2,464	18	0.35		Add 5%	302.4	111.3
BRIDGE OMISSION STA 49+22.00 TO STA 51+84.17									
IL 108 WB	51+84.32	to 71+02.00	1,918	17	0.35		Add 5%	285.6	105.0
IL 108 EB	51+84.32	to 71+02.00	1,918	16	0.35		Add 5%	268.8	98.7
<b>IL 108 SUB-TOTAL</b>								<b>1,159</b>	<b>2,567</b>
<b>TOTALS=</b>								<b>1,638</b>	<b>65,074</b>

MODEL - Schedule of Quantities (Sheet)  
FILE NAME: c:\p\work\155\155\155\155\Schedule.dgn

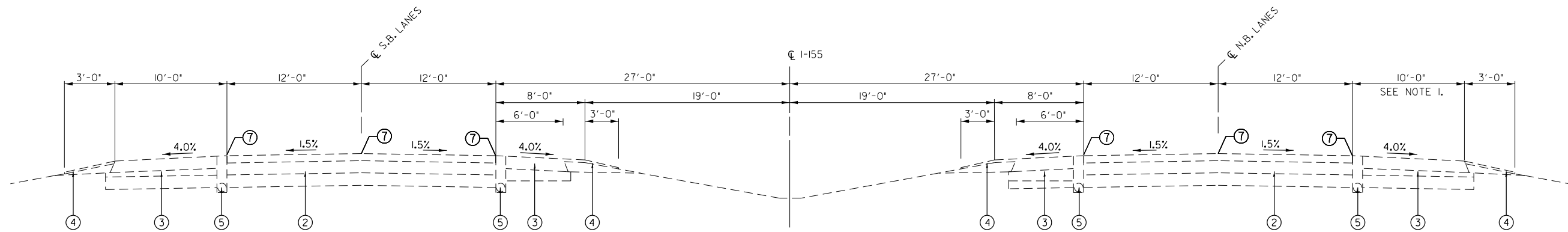
USER NAME = Jonathan.Cox	DESIGNED -	REVISED -
	DRAWN -	REVISED -
	CHECKED -	REVISED -
PLOT DATE = 5/1/2026	DATE -	REVISED -

**STATE OF ILLINOIS  
DEPARTMENT OF TRANSPORTATION**

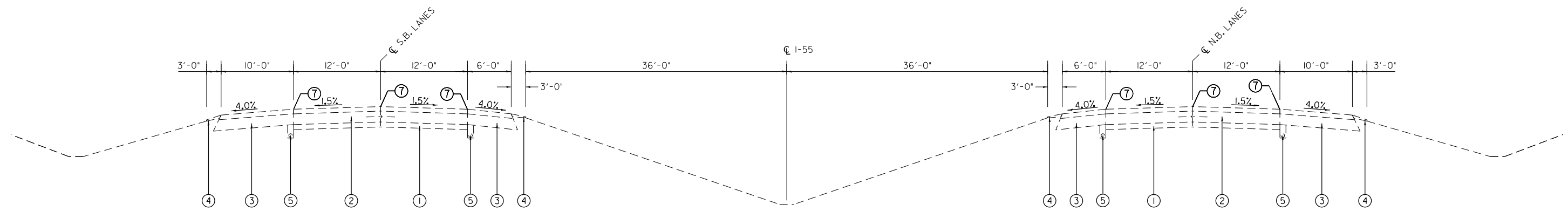
**SCHEDULE OF QUANTITIES**

SCALE: SHEET 1 OF 1 SHEETS STA. TO STA.

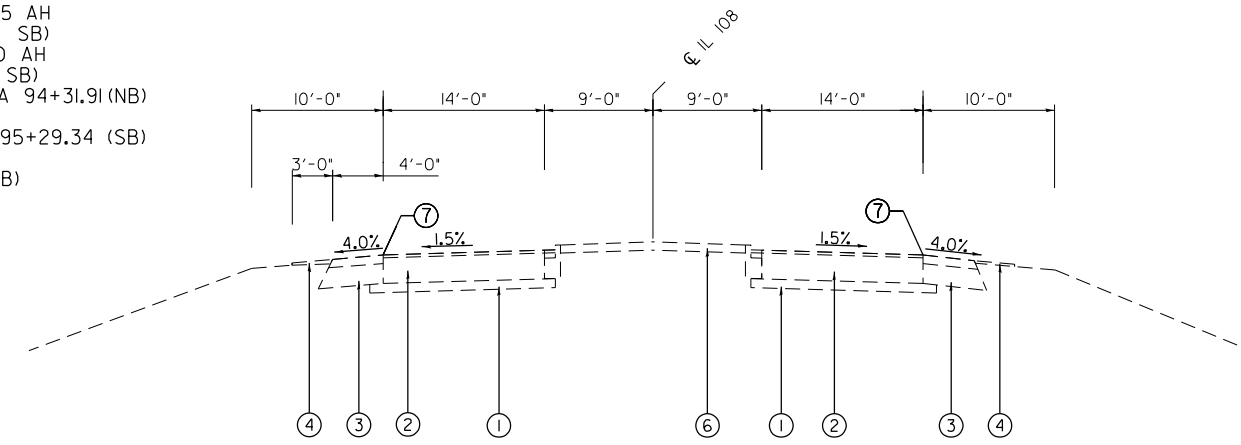
F.A. RTE.	SECTION	COUNTY	TOTAL SHEETS	SHEET NO.
**	D6 CJS 2026-3	***	32	4
CONTRACT NO. 72372				
ILLINOIS FED. AID PROJECT				
****I-155/I-55/IL 108				
*FAI 155, I-55, FAP 769 *****LOGAN/MONTGOMERY				



TYPICAL SECTION No. 1  
 STA 385+75.70 TO STA 546+25.98 (NB & SB)



TYPICAL SECTION No. 2  
 STA 1620+10.00 TO STA 1801+11.70 (NB & SB)  
 STA EQ: STA 1801+11.70 BK= STA 1801+09.15 AH  
 STA 1801+09.15 TO STA 1869+17.80 (NB & SB)  
 STA EQ: STA 1869+17.80 BK= STA 2+22.00 AH  
 STA 2+22.00 TO STA 92+04.08 (NB & SB)  
 BRIDGE OMISSION 068-0048 STA 92+04.08 TO STA 94+31.91 (NB)  
 STA 92+04.08 TO STA 93+01.51 (SB)  
 BRIDGE OMISSION 068-0049 STA 93+01.51 TO STA 95+29.34 (SB)  
 STA 94+31.91 TO STA 95+29.34 (NB)  
 STA 95+29.34 TO 143+00.00 (NB & SB)



TYPICAL SECTION No. 3  
 STA 24+57.58 TO STA 49+22.01 (EB & WB)  
 BRIDGE OMISSION STA 49+22.01 TO STA 51+84.17  
 STA 51+84.17 TO STA 71+02.00

**LEGEND**

- ① EXISTING SUB-BASE GRANULAR MATERIAL
- ② EXISTING PAVEMENT
- ③ EXISTING HMA SHOULDER
- ④ EXISTING AGGREGATE SHOULDER\*
- ⑤ EXISTING PIPE UNDERDRAIN
- ⑥ EXISTING MEDIAN
- ⑦ PROPOSED CRACK & JOINT SEALING

MODEL: Typical (Sheet)  
 FILE NAME: c:\p\work\paw\to\co\proj\1010047172372-shh-Typical.dgn

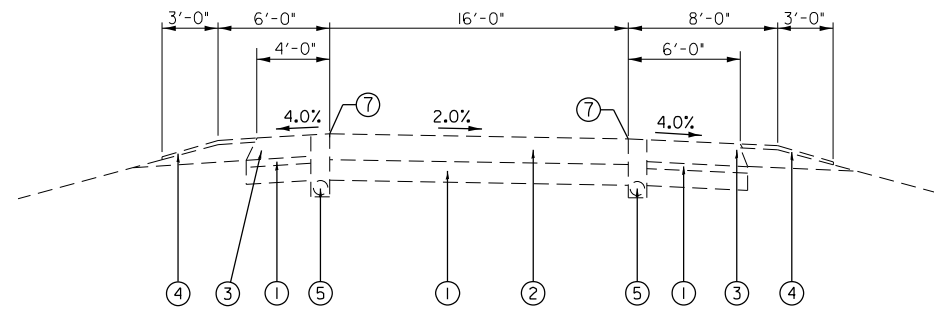
USER NAME = Jonathan.Cox	DESIGNED -	REVISED -
	DRAWN -	REVISED -
	CHECKED -	REVISED -
PLOT DATE = 4/13/2026	DATE -	REVISED -

**STATE OF ILLINOIS  
 DEPARTMENT OF TRANSPORTATION**

**TYPICAL SECTIONS  
 I-155, I-55, & IL 108**

SCALE: SHEET 1 OF 2 SHEETS STA. TO STA.

F.A. RTE.	SECTION	COUNTY	TOTAL SHEETS	SHEET NO.
**	D6 CJS 2026-3	***	32	5
CONTRACT NO. 72372				



TYPICAL SECTION No. 4

I-155 (2 JOINTS)

RAMP A STA 0+00.00 TO STA 10+36.44  
STA 12+01.17 TO STA 16+00.00

RAMP B STA 4+00.00 TO STA 8+53.34  
STA 10+83.82 TO STA 17+73.65

RAMP C STA 0+00.00 TO STA 10+31.79  
STA 12+08.44 TO STA 16+50.00

RAMP D STA 4+00.00 TO STA 8+56.00  
STA 10+92.41 TO STA 17+77.34

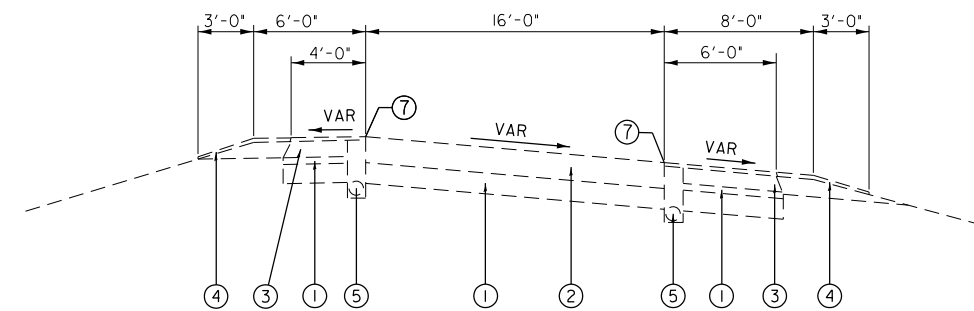
I-55 (2 JOINTS)

RAMP A STA 0+00.00 TO STA 1+24.47  
STA 17+06.35 TO STA 18+00.00

RAMP B STA 21+24.45 TO STA 22+80.37

RAMP C STA 0+00.00 TO STA 1+24.47  
STA 17+03.70 TO STA 20+00.00

RAMP D STA 5+00.00 TO STA 6+62.40  
STA 21+24.45 TO STA 22+75.10



TYPICAL SECTION No. 5

TYPICAL RAMP SUPERELEVATED SECTION

I-155 (2 JOINTS)

RAMP A STA 10+36.44 TO STA 12+01.17

RAMP B STA 8+53.34 TO STA 10+83.82

RAMP C STA 10+31.79 TO STA 12+08.44

RAMP D STA 8+56.00 TO STA 10+92.41

I-55 (2 JOINTS)

RAMP A STA 1+24.47 TO STA 17+06.35

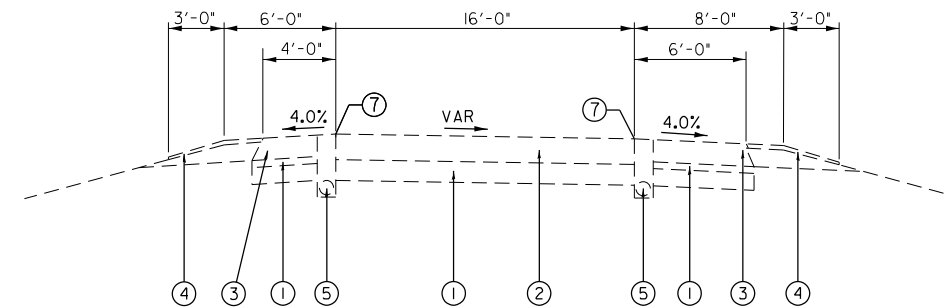
RAMP B STA 3+00.00 TO STA 21+24.45

RAMP C STA 1+24.47 TO STA 17+03.70

RAMP D STA 6+62.40 TO STA 21+24.45

## LEGEND

- ① EXISTING SUB-BASE GRANULAR MATERIAL
- ② EXISTING PAVEMENT
- ③ EXISTING HMA SHOULDER
- ④ EXISTING AGGREGATE SHOULDER\*
- ⑤ EXISTING PIPE UNDERDRAIN
- ⑥ EXISTING MEDIAN
- ⑦ PROPOSED CRACK & JOINT SEALING



TYPICAL SECTION No. 6

I-155 (1 JOINT)

RAMP A STA 16+00.00 TO STA 24+37.24

RAMP B STA 0+00.00 TO STA 3+00.00

RAMP C STA 16+50.00 TO STA 24+41.24

RAMP D STA 0+00.00 TO STA 3+00.00

I-55 (1 JOINT)

RAMP A STA 18+00.00 TO STA 27+57.97

RAMP B STA 0+00.00 TO STA 3+00.00

RAMP C STA 20+00.00 TO STA 27+56.71

RAMP D STA 0+00.00 TO STA 5+00.00

STATE OF ILLINOIS  
DEPARTMENT OF TRANSPORTATION

TYPICAL SECTIONS  
RAMPS I-155 & I-55

SCALE: SHEET 2 OF 2 SHEETS STA. TO STA.

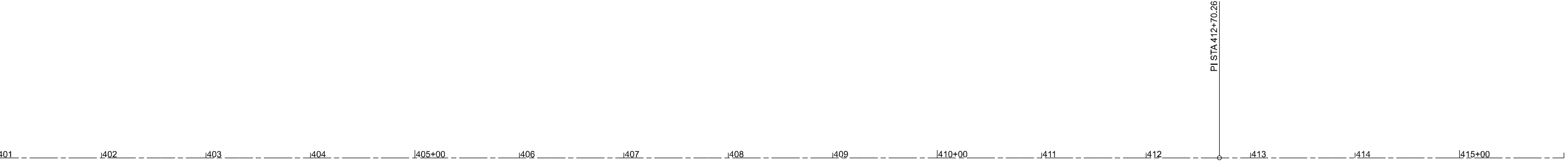
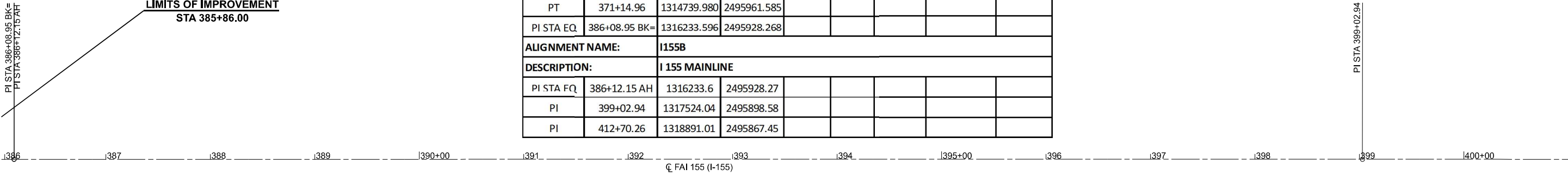
F.A. RTE.	SECTION	COUNTY	TOTAL SHEETS	SHEET NO.
**	D6 CJS 2026-3	***	32	6
CONTRACT NO. 72372				

\*\*\*\*I-155/I-55/IL 108

ILLINOIS FED. AID PROJECT  
\*\*FAI 155, I-55, FAP 769 \*\*\*\*\*LOGAN/MONTGOMERY

USER NAME = Jonathan.Cox	DESIGNED -	REVISED -
	DRAWN -	REVISED -
	CHECKED -	REVISED -
PLOT DATE = 4/13/2026	DATE -	REVISED -

HORIZONTAL ALIGNMENT CONTROL								
NAD83/1997 ADJ - STATE PLANE WEST ZONE								
POINT TYPE	STATION	NORTHING	EASTING	RADIUS	LENGTH	TANGENT	DELTA/THETA	ROTATION
ALIGNMENT NAME:		I155A						
DESCRIPTION:		I 155 MAINLINE						
PT	371+14.96	1314739.980	2495961.585					
PI STA EQ	386+08.95 BK=	1316233.596	2495928.268					
ALIGNMENT NAME:		I155B						
DESCRIPTION:		I 155 MAINLINE						
PI STA FQ	386+12.15 AH	1316233.6	2495928.27					
PI	399+02.94	1317524.04	2495898.58					
PI	412+70.26	1318891.01	2495867.45					



MODEL: I155B-1 - Plan Sheet N (Sheet)  
 FILE NAME: c:\pwworking\autocad\1010047172372-sih-Plan-I155.dgn

USER NAME = Jonathan.Cox	DESIGNED -	REVISED -
	DRAWN -	REVISED -
	CHECKED -	REVISED -
PLOT DATE = 5/1/2026	DATE -	REVISED -

STATE OF ILLINOIS  
 DEPARTMENT OF TRANSPORTATION

PLAN SHEETS  
 FAI IL 155

SCALE: 1"=50' SHEET 1 OF 25 SHEETS STA. 386+12.15 TO STA. 401+12.15

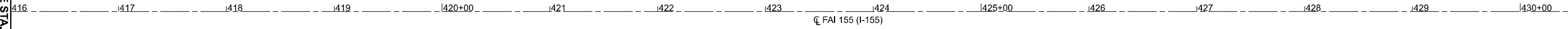
F.A.* RTE.	SECTION	COUNTY	TOTAL SHEETS	SHEET NO.
**	D6 CJS 2026-3	***	32	7
CONTRACT NO. 72372				
ILLINOIS FED. AID PROJECT				

\*\*I-155/I-55/IL 108 \*FAI 155, I-55, FAP 769 \*\*\*LOGAN/MONTGOMERY



HORIZONTAL ALIGNMENT CONTROL							
ALIGNMENT NAME:	I155B						
DESCRIPTION:	I 155 MAINLINE						
PI	437+00.24	1321320.37	2495812.8				
PI	442+00.71	1321820.72	2495801.55				

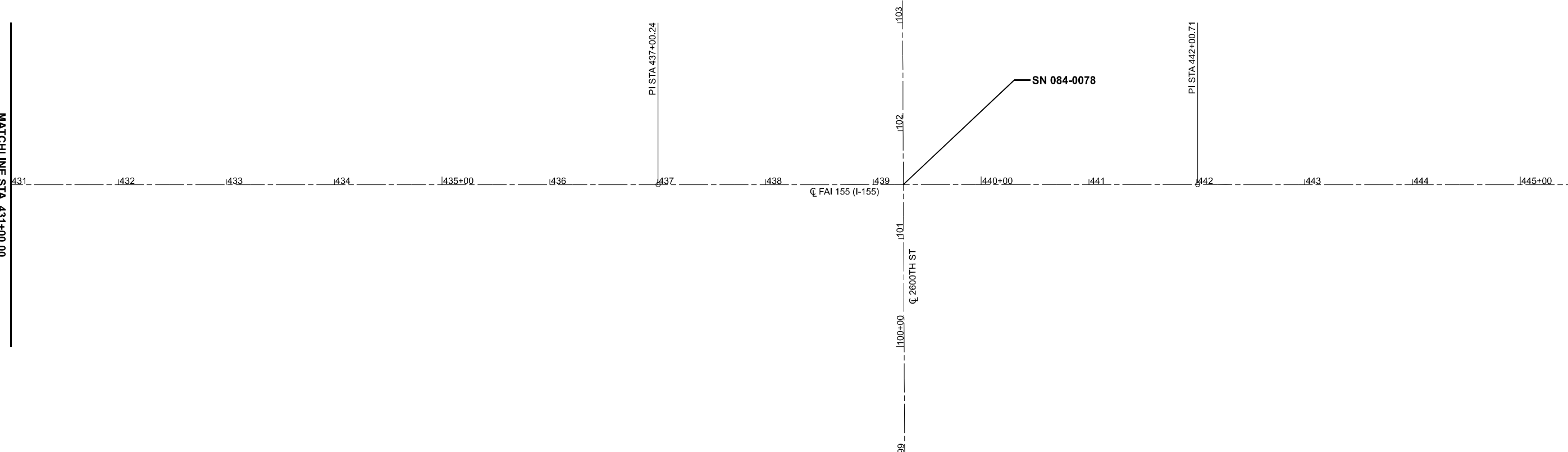
MATCHLINE STA. 416+00.00



MATCHLINE STA. 431+00.00



MATCHLINE STA. 431+00.00



MATCHLINE STA. 446+00.00

MODEL: I155B-1 - Plan Sheet N-2 (Sheet)  
FILE NAME: c:\p\work\pawid\cpx\rd10\10047172372-shr-Plan-I155.dgn

USER NAME = Jonathan.Cox	DESIGNED -	REVISED -
	DRAWN -	REVISED -
	CHECKED -	REVISED -
PLOT DATE = 5/1/2026	DATE -	REVISED -

STATE OF ILLINOIS  
DEPARTMENT OF TRANSPORTATION

PLAN SHEETS  
FAI IL 155

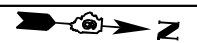
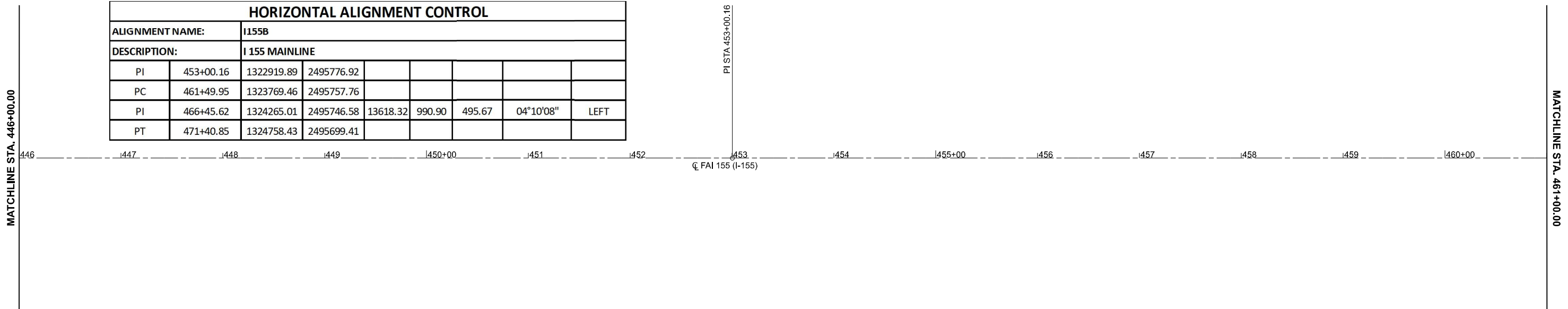
SCALE: 1"=50' SHEET 2 OF 25 SHEETS STA. 416+00.00 TO STA. 446+00.00

FAI RTE.	SECTION	COUNTY	TOTAL SHEETS	SHEET NO.
**	D6 CJS 2026-3	***	32	8
CONTRACT NO. 72372				

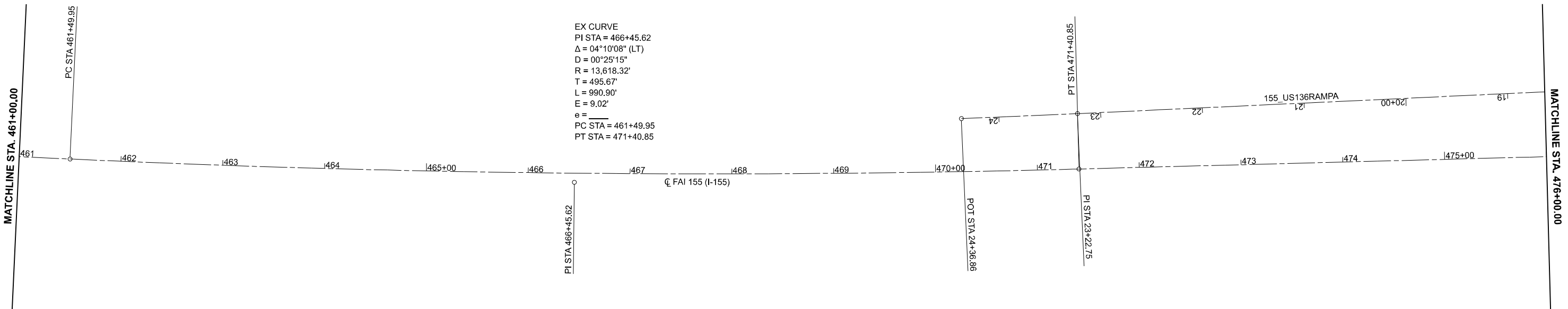
ILLINOIS FED. AID PROJECT  
\*\*I-155/I-55/IL 108 \*FAI 155, I-55, FAP 769 \*\*\*LOGAN/MONTGOMERY



HORIZONTAL ALIGNMENT CONTROL								
ALIGNMENT NAME:	I155B							
DESCRIPTION:	I 155 MAINLINE							
PI	453+00.16	1322919.89	2495776.92					
PC	461+49.95	1323769.46	2495757.76					
PI	466+45.62	1324265.01	2495746.58	13618.32	990.90	495.67	04°10'08"	LEFT
PT	471+40.85	1324758.43	2495699.41					



EX CURVE  
 PI STA = 466+45.62  
 $\Delta = 04^{\circ}10'08''$  (LT)  
 $D = 00^{\circ}25'15''$   
 $R = 13,618.32'$   
 $T = 495.67'$   
 $L = 990.90'$   
 $E = 9.02'$   
 $e =$   
 PC STA = 461+49.95  
 PT STA = 471+40.85



MODEL: I155B-1 - Plan Sheet N-4 (Sheet)  
 FILE NAME: c:\p\work\pawid\co\proj\1010047172372-shh-Plan-I155.dgn

USER NAME = Jonathan.Cox	DESIGNED -	REVISED -
	DRAWN -	REVISED -
	CHECKED -	REVISED -
PLOT DATE = 5/1/2026	DATE -	REVISED -

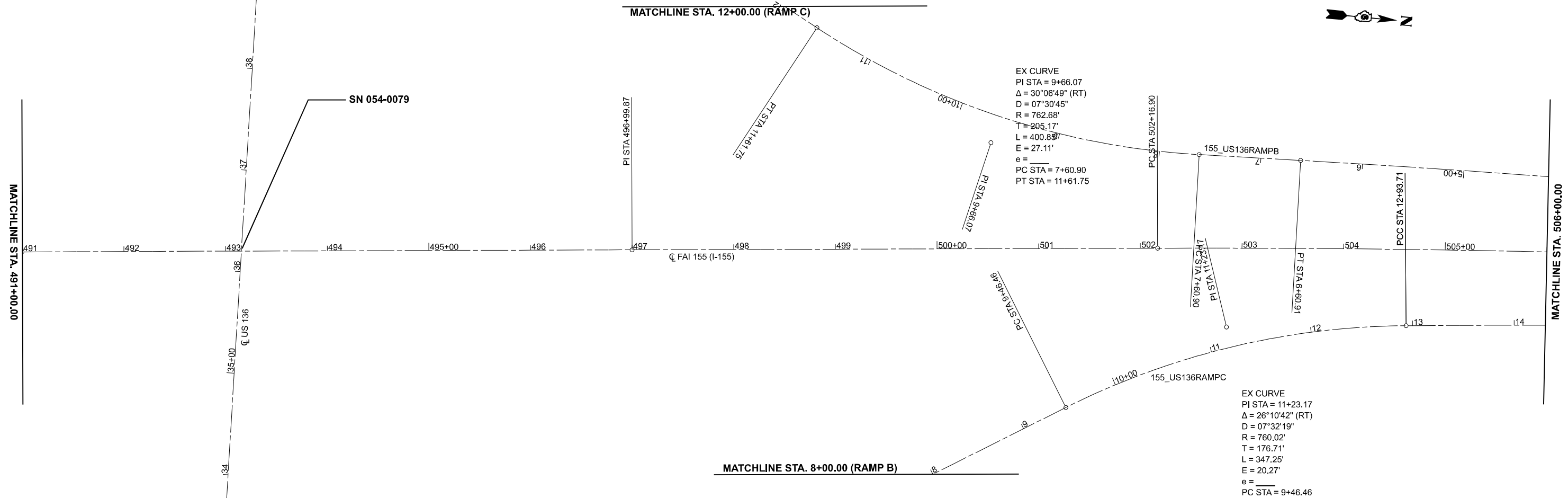
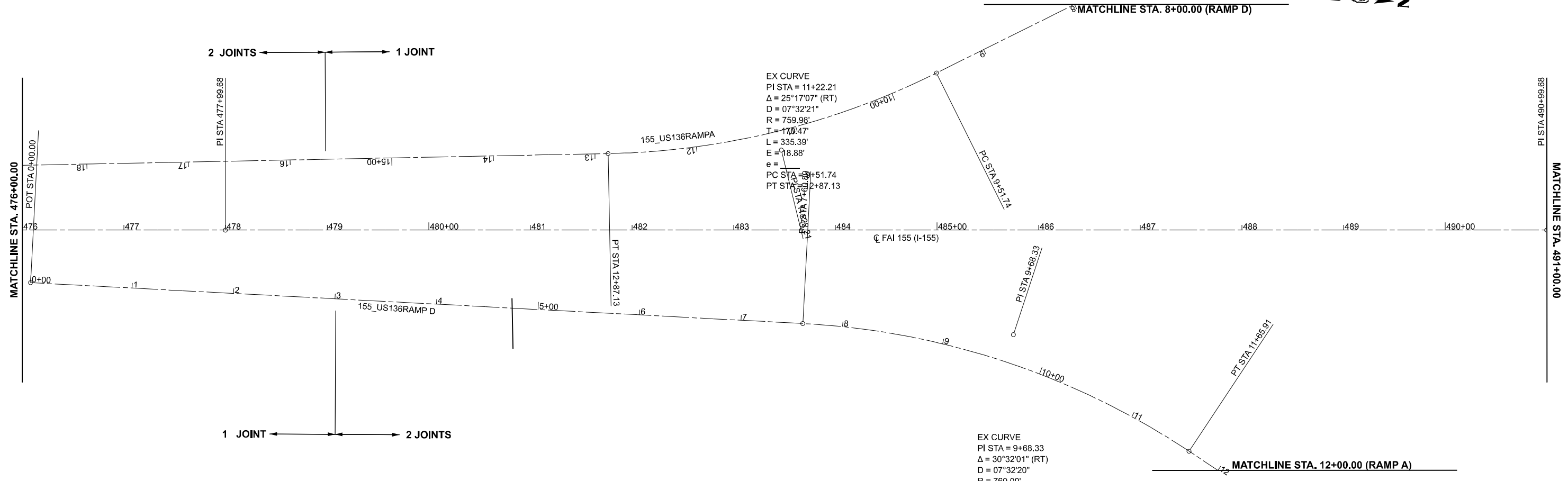
STATE OF ILLINOIS  
 DEPARTMENT OF TRANSPORTATION

PLAN SHEETS  
 FAI IL 155

SCALE: 1"=50' SHEET 3 OF 25 SHEETS STA. 446+00.00 TO STA. 476+00.00

FAI RTE.	SECTION	COUNTY	TOTAL SHEETS	SHEET NO.
**	D6 CJS 2026-3	***	32	9
CONTRACT NO. 72372				

ILLINOIS FED. AID PROJECT  
 \*\*I-155/I-55/IL 108 \*FAI 155, I-55, FAP 769 \*\*\*LOGAN/MONTGOMERY



MODEL: I:\555-1 - Plan Sheet N-6 (Sheet)  
 FILE NAME: c:\p\work\paw\10047172372-shh-Plan-1155.dgn

USER NAME = Jonathan.Cox	DESIGNED -	REVISED -
	DRAWN -	REVISED -
	CHECKED -	REVISED -
PLOT DATE = 5/1/2026	DATE -	REVISED -

**STATE OF ILLINOIS  
DEPARTMENT OF TRANSPORTATION**

**PLAN SHEETS  
FAI IL 155**

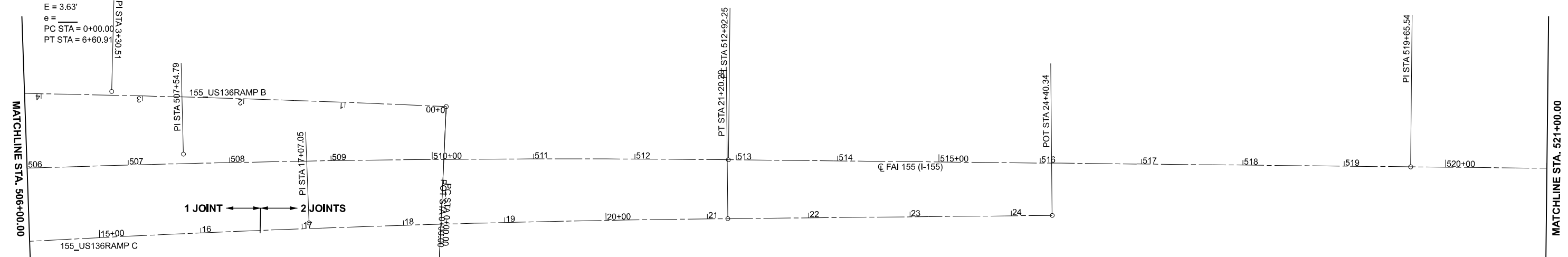
SCALE: 1"=50'    SHEET 4    OF 25 SHEETS    STA. 476+00.00    TO STA. 506+00.00

F.A.I. RTE.	SECTION	COUNTY	TOTAL SHEETS	SHEET NO.
**	D6 CJS 2026-3	***	32	10
CONTRACT NO. 72372				

\*\*I-155/I-55/IL 108    \*FAI 155, I-55, FAP 769    \*\*\*LOGAN/MONTGOMERY



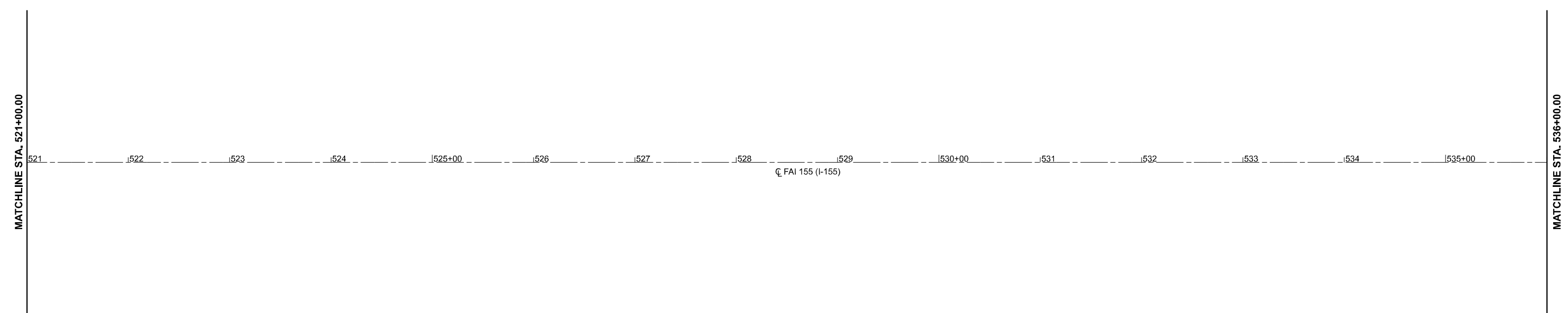
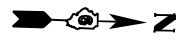
EX CURVE  
 PI STA = 3+30.51  
 $\Delta = 02^{\circ}30'54"$  (LT)  
 $D = 00^{\circ}22'50"$   
 $R = 15,056.34'$   
 $T = 330.51'$   
 $L = 660.91'$   
 $E = 3.63'$   
 $e =$   
 PC STA = 0+00.00  
 PT STA = 6+60.91



EX CURVE  
 PI STA = 507+54.79  
 $\Delta = 03^{\circ}59'08"$  (RT)  
 $D = 00^{\circ}22'14"$   
 $R = 15,459.34'$   
 $T = 537.89'$   
 $L = 1075.35'$   
 $E = 9.35'$   
 $e =$   
 PC STA = 502+16.90  
 PT STA = 512+92.25

EX CURVE  
 PI STA = 17+07.05  
 $\Delta = 03^{\circ}03'34"$  (RT)  
 $D = 00^{\circ}22'13"$   
 $R = 15,478.57'$   
 $T = 413.34'$   
 $L = 826.49'$   
 $E = 5.52'$   
 $e =$   
 PC STA = 12+93.71  
 PT STA = 21+20.20

HORIZONTAL ALIGNMENT CONTROL								
ALIGNMENT NAME:	I155B							
DESCRIPTION:	I 155 MAINLINE							
PI	507+54.79	1328355.87	2495354.44	15459.34	1075.35	537.89	03°59'08"	RIGHT
PT	512+92.25	1328893.58	2495340.41					
PI	519+65.54	1329566.63	2495322.85					



MODEL: I155B-1 - Plan Sheet N-8 [Sheet]  
 FILE NAME: C:\p\work\155\155.dwg

USER NAME = Jonathan.Cox	DESIGNED -	REVISED -
	DRAWN -	REVISED -
	CHECKED -	REVISED -
PLOT DATE = 5/1/2026	DATE -	REVISED -

STATE OF ILLINOIS  
 DEPARTMENT OF TRANSPORTATION

PLAN SHEETS  
 FAI IL 155

SCALE: 1"=50' SHEET 5 OF 25 SHEETS STA. 506+00.00 TO STA. 536+00.00

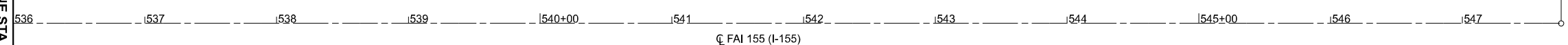
FAI RTE.	SECTION	COUNTY	TOTAL SHEETS	SHEET NO.
**	D6 CJS 2026-3	***	32	11
CONTRACT NO. 72372				
ILLINOIS FED. AID PROJECT				

\*\*I-155/I-55/IL 108 \*FAI 155, I-55, FAP 769 \*\*\*LOGAN/MONTGOMERY



MATCHLINE STA. 536+00.00

POT STA 547+74.85



© FAI 155 (I-155)

HORIZONTAL ALIGNMENT CONTROL								
ALIGNMENT NAME:		I155B						
DESCRIPTION:		I 155 MAINLINE						
POT	536+99.64	1331300.15	2495277.62					
POT	547+74.85	1332374.99	2495249.57					
ALIGNMENT NAME:		155_US136						
DESCRIPTION:		US 136 MAINLINE						
PI	12+19.48	1327001.820	2497861.429					
POT	36+20.18	1326923.139	2495492.037					
PI	57+99.48	1326850.807	2493313.936					

HORIZONTAL ALIGNMENT CONTROL								
ALIGNMENT NAME:		155_US136RAMPA						
DESCRIPTION:		US 136 RAMP						
POT	0+00.00	1326903.911	2494913.04					
PC	9+51.74	1326095.97	2495416.073					
PI	11+22.21	1325951.26	2495506.173	759.98	335.39	170.47	25°17'07"	RIGHT
PT	12+87.13	1325781.92	2495525.829					
PI	23+22.75	1324753.22	2495645.25					
POT	24+36.86	1324639.8	2495657.93					

HORIZONTAL ALIGNMENT CONTROL								
ALIGNMENT NAME:		155_US136RAMPB						
DESCRIPTION:		US 136 RAMP						
PC	0+00.00	1328613.386	2495298.06					
PI	3+30.51	1328282.89	2495295.204	15056.34	660.91	330.51	02°30'54"	LEFT
PT	6+60.91	1327952.58	2495306.856					
PC	7+60.90	1327852.66	2495310.381					
PI	9+66.07	1327647.62	2495317.61	762.68	400.85	205.17	30°06'49"	RIGHT
PT	11+61.75	1327466.62	2495221					
POT	17+99.32	1326904.17	2494920.76					

HORIZONTAL ALIGNMENT CONTROL								
ALIGNMENT NAME:		I21_CH20						
DESCRIPTION:		SIDE ROAD OVERPASS						
PT	97+87.07	1321557.707	2496170.690					
PI	99+99.67	1321551.927	2495958.162					
PI	101+50.21	1321547.835	2495807.685					
PC	106+30.86	1321534.767	2495327.205					

MODEL: I155B-1 - Plan Sheet N-10 (Sheet)  
FILE NAME: c:\p\work\pawid\co\p\1010047172372-shh-Plan-I155.dgn

USER NAME = Jonathan.Cox	DESIGNED -	REVISED -
	DRAWN -	REVISED -
	CHECKED -	REVISED -
PLOT DATE = 5/1/2026	DATE -	REVISED -

**STATE OF ILLINOIS  
DEPARTMENT OF TRANSPORTATION**

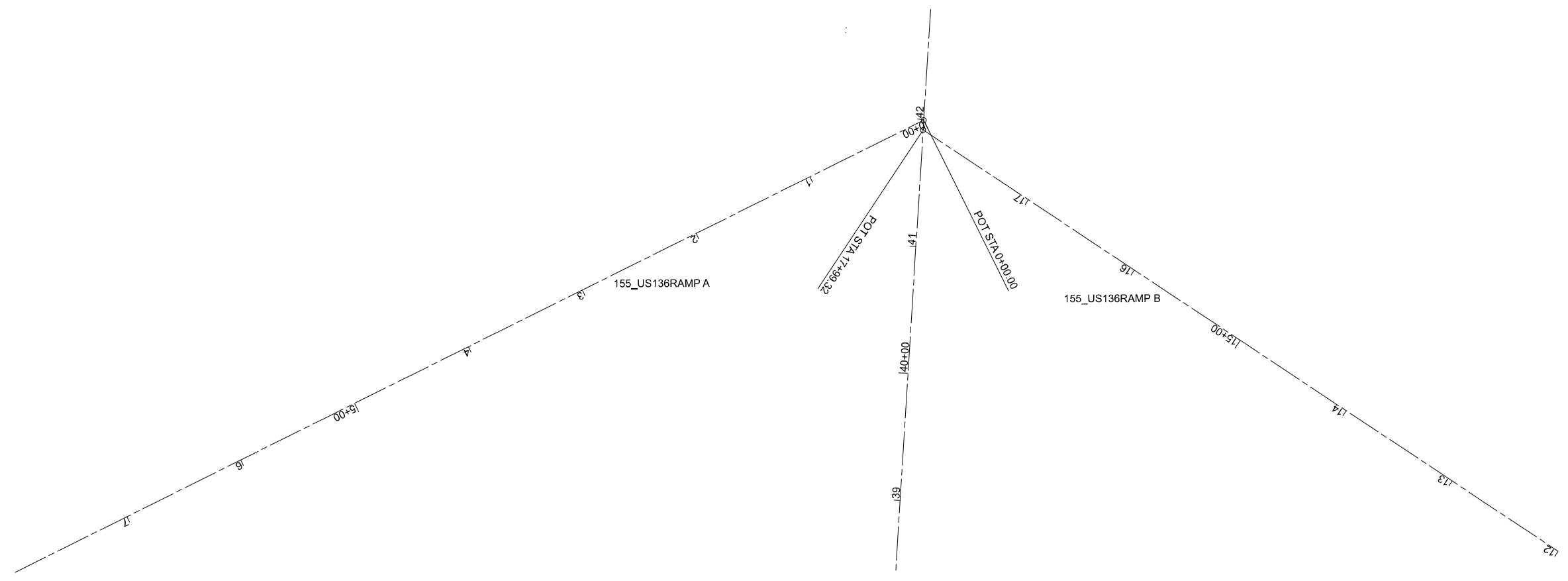
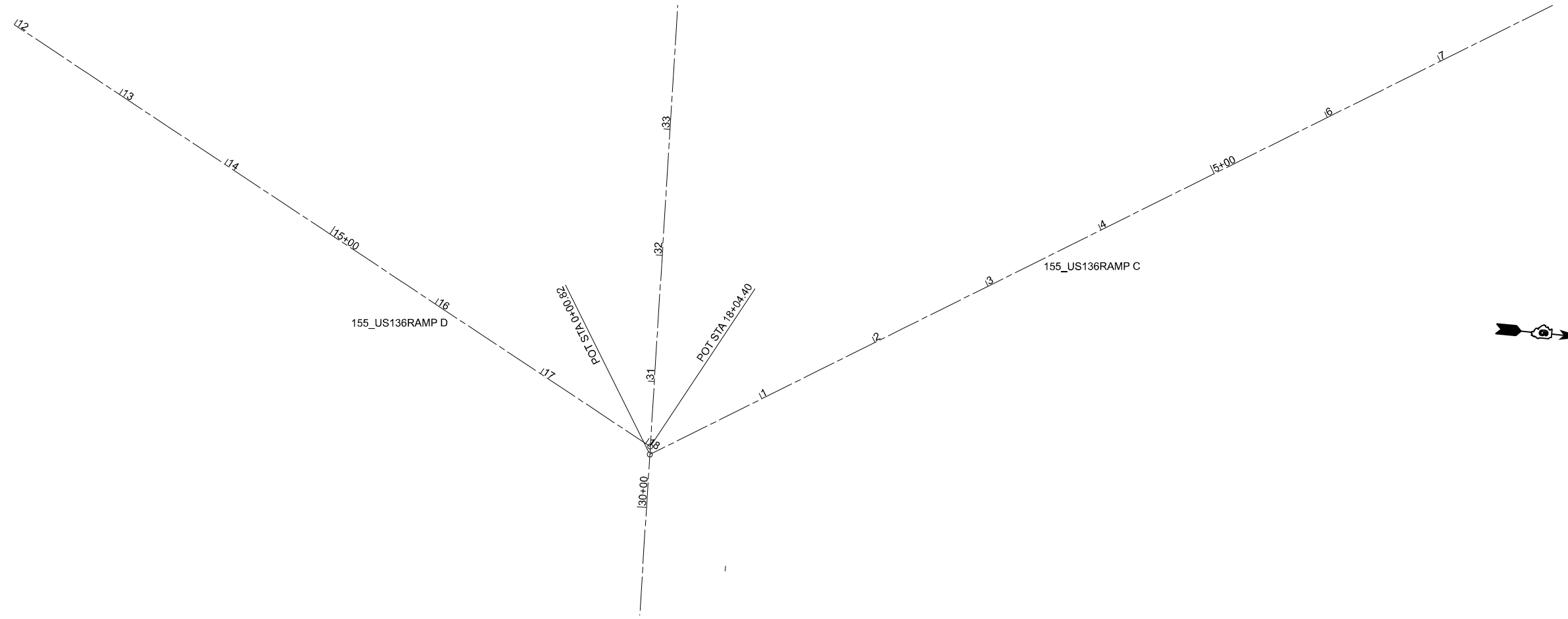
**PLAN SHEETS  
FAI IL 155**

SCALE: 1"=50'      SHEET 6      OF 25      SHEETS      STA. 536+00.00      TO STA. 551+00.00

FAI RTE.	SECTION	COUNTY	TOTAL SHEETS	SHEET NO.
**	D6 CJS 2026-3	***	32	12
CONTRACT NO. 72372				
ILLINOIS FED. AID PROJECT				

\*\*I-155/I-55/IL 108      \*FAI 155, I-55, FAP 769      \*\*\*LOGAN/MONTGOMERY

= 30°32'01" (RT)  
 = 07°32'20"  
 = 760.00'  
 = 207.44'  
 = 405.01'  
 = 27.80'  
 = \_\_\_\_\_  
 > STA = 7+60.89  
 † STA = 11+65.91



MODEL: I:\555-1 - Plan Sheet N-11 (Sheet)  
 FILE NAME: c:\p\work\pawid\co\proj\1010047172372-shh-Plan-1155.dgn

USER NAME = Jonathan.Cox	DESIGNED -	REVISED -
	DRAWN -	REVISED -
	CHECKED -	REVISED -
PLOT DATE = 5/1/2026	DATE -	REVISED -

STATE OF ILLINOIS  
 DEPARTMENT OF TRANSPORTATION

PLAN SHEETS  
 FAI IL 155

SCALE: 1"=50' SHEET 7 OF 25 SHEETS STA. 0+00.00 TO STA. 24+99.66

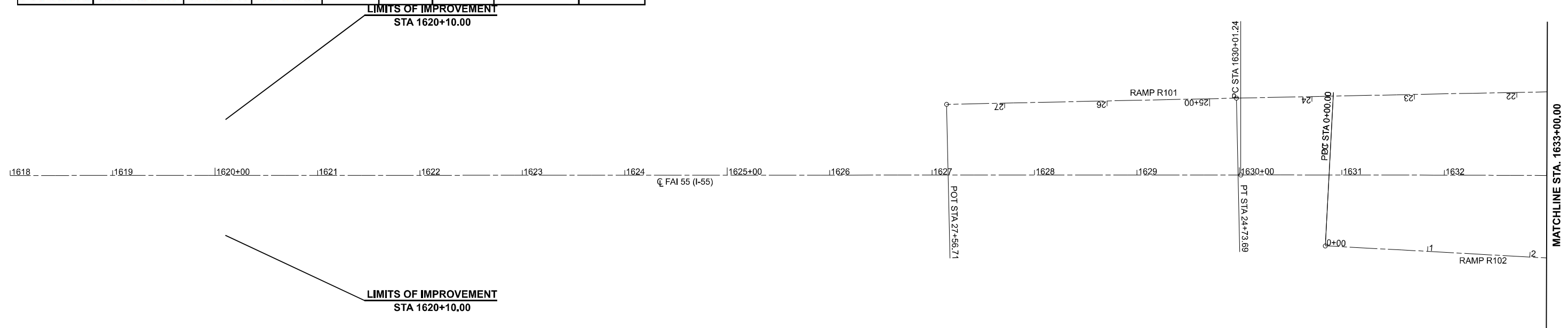
F.A.I. RTE.	SECTION	COUNTY	TOTAL SHEETS	SHEET NO.
**	D6 CJS 2026-3	***	32	13
CONTRACT NO. 72372				

ILLINOIS FED. AID PROJECT  
 \*\*I-155/I-55/IL 108 \*FAI 155, I-55, FAP 769 \*\*\*LOGAN/MONTGOMERY

1603 1604 1605+00 1606 1607 1608 1609 1610+00 1611 1612 1613 1614 1615+00 1616 1617

HORIZONTAL ALIGNMENT CONTROL								
NAD83/1997 ADJ - STATE PLANE WEST ZONE								
POINT TYPE	STATION	NORTHING	EASTING	RADIUS	LENGTH	TANGENT	DELTA/THETA	ROTATION
ALIGNMENT NAME:		E005_I55						
DESCRIPTION:		I 55 MAINLINE						
PT	1587+08.66	957783.400	2445037.952					
PC	1630+01.24	953491.586	2445119.080					
PI	1635+08.95	952983.960	2445128.676	81957.61	1015.42	507.72	00°42'36"	RIGHT
PT	1640+16.66	952476.254	2445131.982					
PC	1640+16.66	952476.258	2445131.982					
PI	1645+23.97	951968.958	2445135.285	81331.80	1014.61	507.31	00°42'53"	LEFT
PT	1650+31.27	951461.738	2445144.916					
PI	1708+50.10	945643.952	2445255.387					
PI	1733+84.08	943110.425	2445303.000					
PI	1771+12.90	939382.068	2445361.941					
POT STA EQ	1801+11.70 BK=	936383.644	2445409.476					

HORIZONTAL ALIGNMENT CONTROL								
POINT TYPE	STATION	NORTHING	EASTING	RADIUS	LENGTH	TANGENT	DELTA/THETA	ROTATION
ALIGNMENT NAME:		R101						
DESCRIPTION:		IL 108 RAMP						
POT	0+00.00	951324.447	2445975.524					
PC	2+35.55	951559.833	2445984.418					
PI	5+06.00	951830.084	2445994.630	479.43	492.47	270.44	58°51'17"	LEFT
PT	7+28.02	951978.600	2445768.614					
PC	9+68.62	952110.726	2445567.543					
PI	13+66.84	952329.410	2445234.743	768.11	734.76	398.22	54°48'29"	RIGHT
PT	17+03.38	952727.415	2445221.661					
PC	18+06.69	952830.674	2445218.266					
PI	21+40.19	953163.992	2445207.310	91769.75	667.00	333.50	00°24'59"	LEFT
PT	24+73.69	953497.225	2445193.931					
POT	27+56.71	953780.016	2445182.577					



MODEL: E005\_I55 - Plan Sheet S-18 (Sheet)  
 FILE NAME: c:\pwwork\jcoxon\1010047172372-shh-Plan-I55-108.dgn

USER NAME = Jonathan.Cox	DESIGNED -	REVISED -
	DRAWN -	REVISED -
	CHECKED -	REVISED -
PLOT DATE = 5/1/2026	DATE -	REVISED -

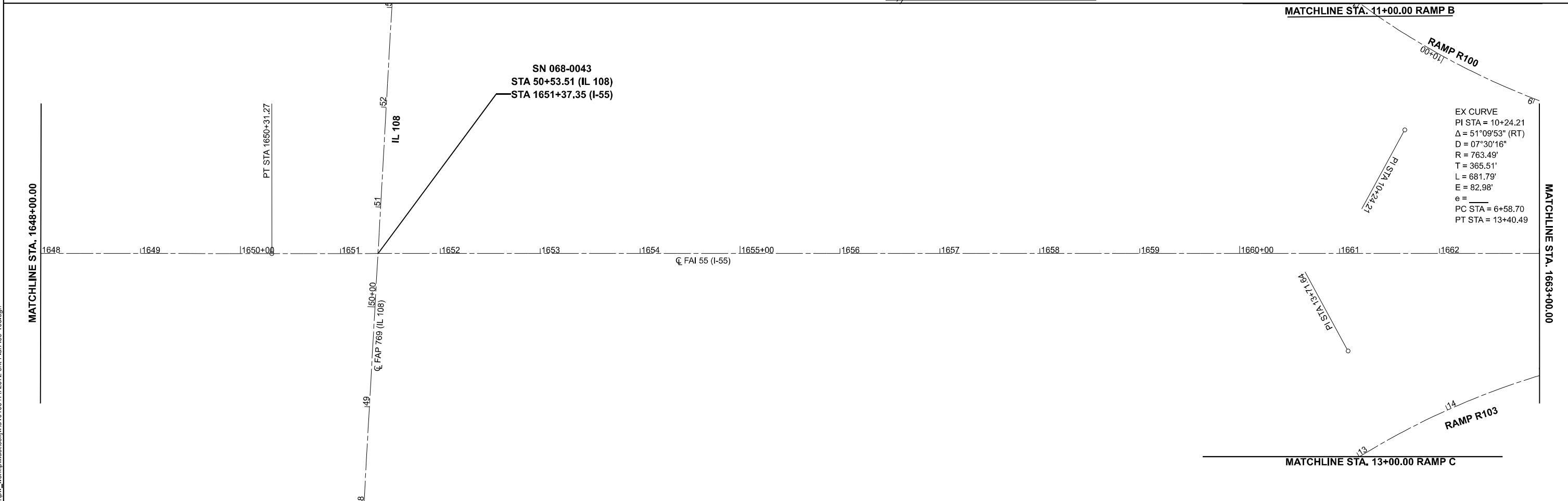
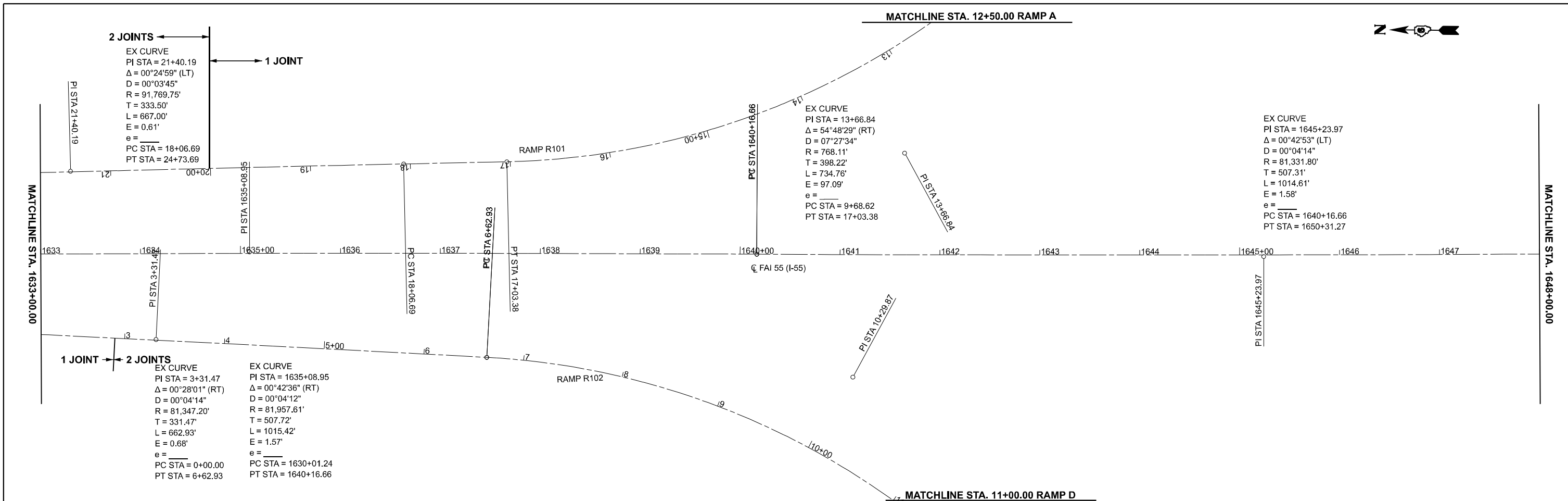
**STATE OF ILLINOIS**  
**DEPARTMENT OF TRANSPORTATION**

**PLAN SHEETS**  
**FAI I55**

SCALE: 1"=50'      SHEET 8      OF 25      SHEETS      STA. 1603+00.00      TO STA. 1633+00.00

F.A. RTE.	SECTION	COUNTY	TOTAL SHEETS	SHEET NO.
**	D6 CJS 2026-3	***	32	14
CONTRACT NO. 72372				

\*\*I-155/I-55/IL 108      \*FAI 155, I-55, FAP 769      \*\*\*LOGAN/MONTGOMERY



MODEL: E:\05\_155\_Plan\_Sheet\_S-20 (Sheet)  
 FILE NAME: c:\pwworking\dotcom\project\1010047172372-shh-Plan-155-108.dgn

USER NAME = Jonathan.Cox	DESIGNED -	REVISED -
	DRAWN -	REVISED -
	CHECKED -	REVISED -
PLOT DATE = 5/1/2026	DATE -	REVISED -

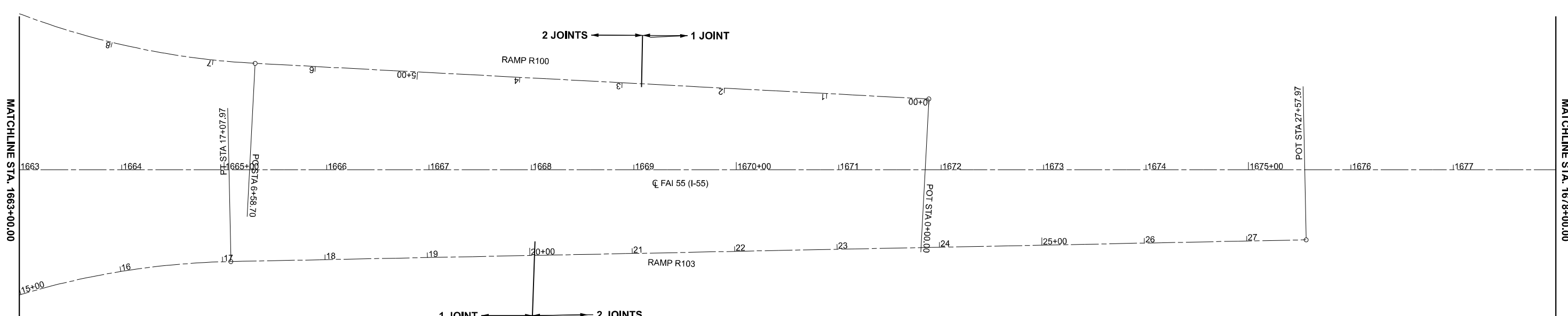
**STATE OF ILLINOIS**  
**DEPARTMENT OF TRANSPORTATION**

**PLAN SHEETS**  
**FAI 155**

SCALE: 1"=50'    SHEET 9 OF 25 SHEETS    STA. 1633+00.00 TO STA. 1663+00.00

F.A.* RTE.	SECTION	COUNTY	TOTAL SHEETS	SHEET NO.
**	D6 CJS 2026-3	***	32	15
CONTRACT NO. 72372				

\*\*I-155/I-55/IL 108    \*FAI 155, I-55, FAP 769    \*\*\*LOGAN/MONTGOMERY



HORIZONTAL ALIGNMENT CONTROL								
POINT TYPE	STATION	NORTHING	EASTING	RADIUS	LENGTH	TANGENT	DELTA/THETA	ROTATION
ALIGNMENT NAME:		R103						
DESCRIPTION:		IL 108 RAMP						
POT	0+00.00	951386.392	2444320.193					
PC	2+35.55	951151.012	2444311.255					
PI	5+08.01	950878.744	2444300.917	478.74	495.41	272.46	59°17'26"	LEFT
PT	7+30.96	950730.812	2444529.724					
PC	9+73.50	950599.127	2444733.402					
PI	13+71.64	950382.961	2445067.748	766.93	734.47	398.14	54°52'14"	RIGHT
PT	17+07.97	949985.128	2445083.347					
POT	27+57.97	948935.934	2445124.487					

HORIZONTAL ALIGNMENT CONTROL								
POINT TYPE	STATION	NORTHING	EASTING	RADIUS	LENGTH	TANGENT	DELTA/THETA	ROTATION
ALIGNMENT NAME:		R102						
DESCRIPTION:		IL 108 RAMP						
PC	0+00.00	953407.795	2445051.488					
PI	3+31.47	953076.527	2445040.000	81347.2	662.93	331.47	00°28'01"	RIGHT
PT	6+62.93	952745.362	2445025.813					
PC	6+62.93	952745.362	2445025.813					
PI	10+29.87	952378.764	2445010.107	769.07	684.74	366.93	51°00'47"	RIGHT
PT	13+47.67	952160.330	2444715.274					
PC	15+86.15	952018.360	2444523.650					
PI	18+15.96	951881.554	2444338.995	478.67	428.51	229.81	51°17'30"	LEFT
PT	20+14.66	951651.908	2444330.275					
POT	22+80.37	951386.392	2444320.193					



MODEL: E005\_I55 - Plan Sheet S22 (Sheet)  
 FILE NAME: c:\pwworking\jcoxon\project\100047172372-shh-Plan-I55-108.dgn

MATCHLINE STA. 1678+00.00

MATCHLINE STA. 1693+00.00

USER NAME = Jonathan.Cox	DESIGNED -	REVISED -
	DRAWN -	REVISED -
	CHECKED -	REVISED -
PLOT DATE = 5/1/2026	DATE -	REVISED -

**STATE OF ILLINOIS**  
**DEPARTMENT OF TRANSPORTATION**

**PLAN SHEETS**  
**FAI 155**

SCALE: 1"=50'      SHEET 10 OF 25 SHEETS      STA. 1663+00.00 TO STA. 1693+00.00

F.A. RTE.	SECTION	COUNTY	TOTAL SHEETS	SHEET NO.
**	D6 CJS 2026-3	***	32	16
CONTRACT NO. 72372				

\*\*1-155/1-55/IL 108      \*FAI 155, I-55, FAP 769      \*\*\*LOGAN/MONTGOMERY



MATCHLINE STA. 1693+00.00

1693 1694 1695+00 1696 1697 1698 1699 1700+00 1701 1702 1703 1704 1705+00 1706 1707

CL FAI 55 (I-55)

MATCHLINE STA. 1708+00.00



MATCHLINE STA. 1708+00.00

PI STA. 1708+50.10

1708 1709 1710+00 1711 1712 1713 1714 1715+00 1716 1717 1718 1719 1720+00 1721 1722

CL FAI 55 (I-55)

MATCHLINE STA. 1723+00.00

MODEL: E005\_I55\_Plan\_Sheet\_S24 (Sheet)  
FILE NAME: c:\p\work\155\108\172372-shh-Plan-I55-108.dgn

USER NAME = Jonathan.Cox	DESIGNED -	REVISED -
	DRAWN -	REVISED -
	CHECKED -	REVISED -
PLOT DATE = 5/1/2026	DATE -	REVISED -

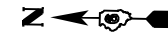
**STATE OF ILLINOIS  
DEPARTMENT OF TRANSPORTATION**

**PLAN SHEETS  
FAI 155**

SCALE: 1"=50' SHEET 11 OF 25 SHEETS STA. 1693+00.00 TO STA. 1723+00.00

F.A. RTE.	SECTION	COUNTY	TOTAL SHEETS	SHEET NO.
**	D6 CJS 2026-3	***	32	17
CONTRACT NO. 72372				
ILLINOIS FED. AID PROJECT				

\*\*1-155/I-55/IL 108 \*FAI 155, I-55, FAP 769 \*\*\*LOGAN/MONTGOMERY



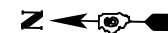
MATCHLINE STA. 1723+00.00

1723 1724 1725+00 1726 1727 1728 1729 1730+00 1731 1732 1733 1734 1735+00 1736 1737

☉ FAI 55 (I-55)

PI STA 1733+84.08

MATCHLINE STA. 1738+00.00



MATCHLINE STA. 1738+00.00

1738 1739 1740+00 1741 1742 1743 1744 1745+00 1746 1747 1748 1749 1750+00 1751 1752

☉ FAI 55 (I-55)

MATCHLINE STA. 1753+00.00

MODEL: E005\_I55\_Plan\_Sheet\_S261(Sheet)  
FILE NAME: c:\p\work\155\10047172372-shh-Plan-I55-108.dgn

USER NAME = Jonathan.Cox	DESIGNED -	REVISED -
	DRAWN -	REVISED -
	CHECKED -	REVISED -
PLOT DATE = 5/1/2026	DATE -	REVISED -

**STATE OF ILLINOIS  
DEPARTMENT OF TRANSPORTATION**

**PLAN SHEETS  
FAI I55**

SCALE: 1"=50' SHEET 12 OF 25 SHEETS STA. 1723+00.00 TO STA. 1753+00.00

F.A. RTE.	SECTION	COUNTY	TOTAL SHEETS	SHEET NO.
**	D6 CJS 2026-3	***	32	18
CONTRACT NO. 72372				
ILLINOIS FED. AID PROJECT				

\*\*I-155/I-55/IL 108 \*FAI 155, I-55, FAP 769 \*\*\*LOGAN/MONTGOMERY

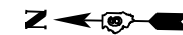


MATCHLINE STA. 1753+00.00

1753 1754 1755+00 1756 1757 1758 1759 1760+00 1761 1762 1763 1764 1765+00 1766 1767

CL FAI 55 (I-55)

MATCHLINE STA. 1768+00.00



MATCHLINE STA. 1768+00.00

1768 1769 1770+00 1771 1772 1773 1774 1775+00 1776 1777 1778 1779

CL FAI 55 (I-55)

PI STA 1771+12.90

MATCHLINE STA. 1780+00.00



MODEL: E005\_I55\_Plan\_Sheet\_S28 (Sheet)  
FILE NAME: c:\p\work\louis\louis\1010047172372-shh-Plan-I55-108.dgn

USER NAME = Jonathan.Cox	DESIGNED -	REVISED -
	DRAWN -	REVISED -
	CHECKED -	REVISED -
PLOT DATE = 5/1/2026	DATE -	REVISED -

**STATE OF ILLINOIS  
DEPARTMENT OF TRANSPORTATION**

**PLAN SHEETS  
FAI 155**

SCALE: 1"=50' SHEET 13 OF 25 SHEETS STA. 1753+00.00 TO STA. 1768+00.00

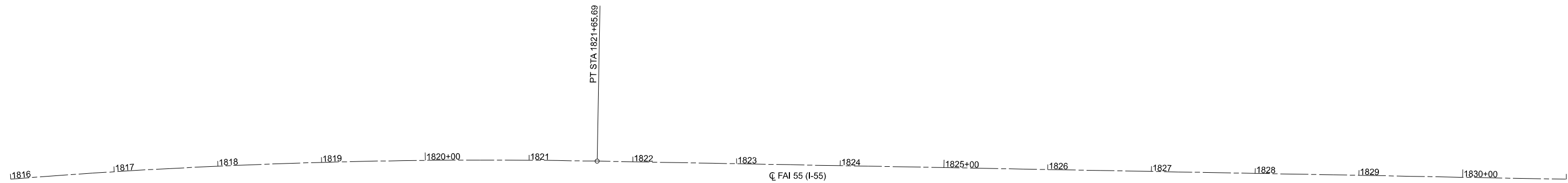
F.A. RTE.	SECTION	COUNTY	TOTAL SHEETS	SHEET NO.
**	D6 CJS 2026-3	***	32	19
CONTRACT NO. 72372				

\*\*I-155/I-55/IL 108 \*FAI 155, I-55, FAP 769 \*\*\*LOGAN/MONTGOMERY





EX CURVE  
 PI STA = 1811+48.64  
 $\Delta = 20^{\circ}35'39''$  (RT)  
 D =  $01^{\circ}00'05''$   
 R = 5,721.63'  
 T = 1,039.49'  
 L = 2056.55'  
 E = 93.66'  
 e = \_\_\_\_\_  
 PC STA = 1801+09.15  
 PT STA = 1821+65.69



MODEL: E005\_I55\_Plan\_Sheet\_S32 (Sheet)  
 FILE NAME: c:\p\work\awid\c0x\rd10\0047172372-shh-Plan-I55-108.dgn

USER NAME = Jonathan.Cox	DESIGNED -	REVISED -
	DRAWN -	REVISED -
	CHECKED -	REVISED -
PLOT DATE = 5/1/2026	DATE -	REVISED -

**STATE OF ILLINOIS  
 DEPARTMENT OF TRANSPORTATION**

**PLAN SHEETS  
 FAI 155**

SCALE: 1"=50' SHEET 15 OF 25 SHEETS STA. 1804+00.00 TO STA. 1816+00.00

F.A. RTE.	SECTION	COUNTY	TOTAL SHEETS	SHEET NO.
**	D6 CJS 2026-3	***	32	21
CONTRACT NO. 72372				

ILLINOIS FED. AID PROJECT  
 \*\*I-155/I-55/IL 108 \*FAI 155, I-55, FAP 769 \*\*\*LOGAN/MONTGOMERY



MATCHLINE STA. 1831+00.00

1831 1832 1833 1834 1835+00 1836 1837 1838 1839 1840+00 1841 1842 1843 1844 1845+00

CL FAI 55 (I-55)

MATCHLINE STA. 1846+00.00

MATCHLINE STA. 1846+00.00

1846 1847 1848 1849 1850+00 1851 1852 1853 1854 1855+00 1856 1857 1858 1859 1860+00

CL FAI 55 (I-55)

PC STA 1855+21.71



MATCHLINE STA. 1861+00.00

MODEL: E005\_I55\_Plan\_Sheet\_S-34 (Sheet)  
FILE NAME: c:\p\work\pawid\cpx\m\10\0047\72372-shr-Plan-I55-108.dgn

USER NAME = Jonathan.Cox	DESIGNED -	REVISED -
	DRAWN -	REVISED -
	CHECKED -	REVISED -
PLOT DATE = 5/1/2026	DATE -	REVISED -

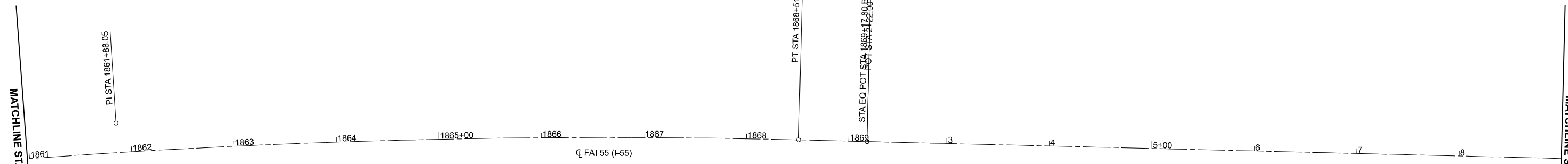
STATE OF ILLINOIS  
DEPARTMENT OF TRANSPORTATION

PLAN SHEETS  
FAI 155

SCALE: 1"=50' SHEET 16 OF 25 SHEETS STA. 1831+00.00 TO STA. 1861+00.00

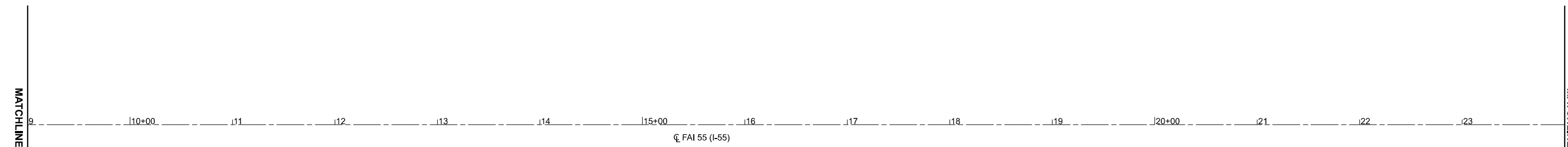
F.A.I RTE.	SECTION	COUNTY	TOTAL SHEETS	SHEET NO.
**	D6 CJS 2026-3	***	32	22
CONTRACT NO. 72372				

\*\*I-155/I-55/IL 108 \*FAI 155, I-55, FAP 769 \*\*\*LOGAN/MONTGOMERY



EX CURVE  
 PI STA = 1861+88.05  
 $\Delta = 09^{\circ}56'49''$  (RT)  
 $D = 00^{\circ}44'54''$   
 $R = 7,657.06'$   
 $T = 666.34'$   
 $L = 1329.33'$   
 $E = 28.94'$   
 $e =$   
 PC STA = 1855+21.71  
 PT STA = 1868+51.04

HORIZONTAL ALIGNMENT CONTROL								
POINT TYPE	STATION	NORTHING	EASTING	RADIUS	LENGTH	TANGENT	DELTA/THETA	ROTATION
ALIGNMENT NAME:		E007_I55						
DESCRIPTION:		I 55 MAINLINE						
POT STA EQ	2+22.00 AH	929941.070	2443358.337					
PC	43+37.75	926363.610	2441323.344					
PI	47+92.67	925968.190	2441098.414	48822.83	909.81	454.92	01°04'04"	RIGHT
PT	52+47.56	925577.030	2440866.155					
PI	62+98.94	924673.007	2440329.374					
PI	125+00.00	919340.399	2437164.498					
PC	133+02.04	918650.671	2436755.183					
PI	140+21.82	918031.676	2436387.844	22940.18	1439.10	719.79	03°35'40"	LEFT
PT	147+41.14	917390.870	2436060.034					



MODEL: E005\_I55 - Plan Sheet S-36 (Sheet)  
 FILE NAME: c:\p\work\pawid\ccoj\rd10\0047\72372-shr-Plan-I55-108.dgn

USER NAME = Jonathan.Cox	DESIGNED -	REVISED -
	DRAWN -	REVISED -
	CHECKED -	REVISED -
PLOT DATE = 5/1/2026	DATE -	REVISED -

**STATE OF ILLINOIS  
 DEPARTMENT OF TRANSPORTATION**

**PLAN SHEETS  
 FAI I55**

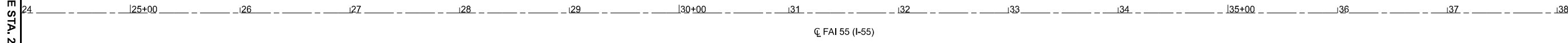
SCALE: 1"=50'    SHEET 17 OF 25 SHEETS    STA. 1861+00.00 TO STA. 1876+00.00

F.A. RTE.	SECTION	COUNTY	TOTAL SHEETS	SHEET NO.
**	D6 CJS 2026-3	***	32	23
CONTRACT NO. 72372				



MATCHLINE STA. 24+00.00

MATCHLINE STA. 39+00.00

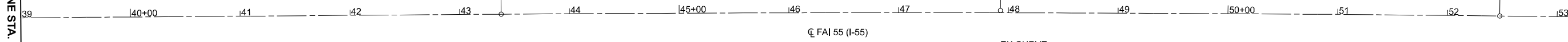


HORIZONTAL ALIGNMENT CONTROL								
POINT TYPE	STATION	NORTHING	EASTING	RADIUS	LENGTH	TANGENT	DELTA/THETA	ROTATION
ALIGNMENT NAME:		E008_108						
DESCRIPTION:		IL 108 MAINLINE						
POT	24+57.58	951442.906	2442552.491					
PC	30+60.36	951425.660	2443155.024					
PI	35+48.70	951411.689	2443643.163	111842.64	976.67	488.34	00°30'01"	RIGHT
PT	40+37.03	951393.455	2444131.160					
PC	57+39.78	951329.877	2445832.725					
PI	62+65.90	951310.233	2446358.482	107682.46	1052.24	526.12	00°33'36"	RIGHT
PT	67+92.02	951285.452	2446884.022					
POT	70+96.07	951271.131	2447187.736					



MATCHLINE STA. 39+00.00

MATCHLINE STA. 54+00.00



EX CURVE  
 PI STA = 47+92.67  
 $\Delta = 01^{\circ}04'04''$  (RT)  
 $D = 00^{\circ}07'02''$   
 $R = 48,822.83'$   
 $T = 454.92'$   
 $L = 909.81'$   
 $e = 2.12'$   
 $e =$   
 PC STA = 43+37.75  
 PT STA = 52+47.56

MODEL: E005\_I55 - Plan Sheet S-38 (Sheet)  
FILE NAME: c:\p\work\155\108\10047172372-shr-Plan-I55-108.dgn

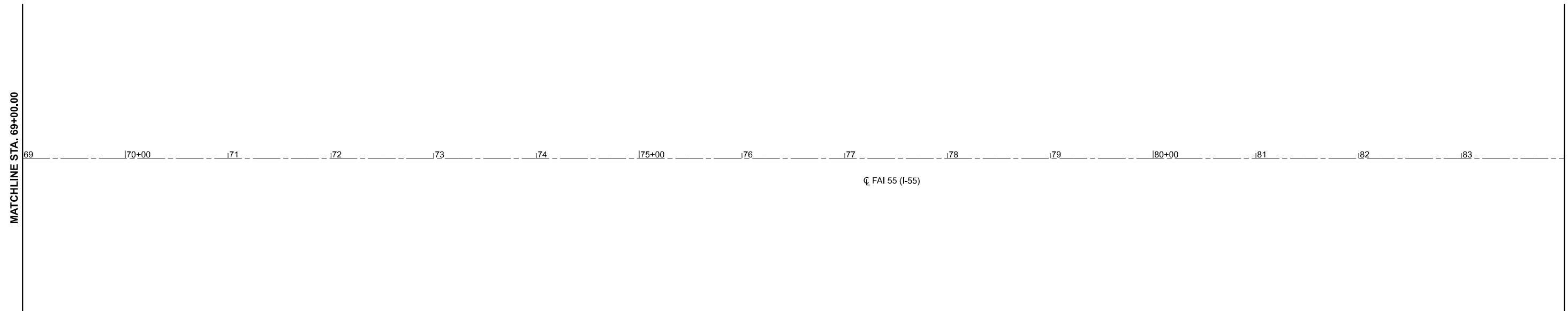
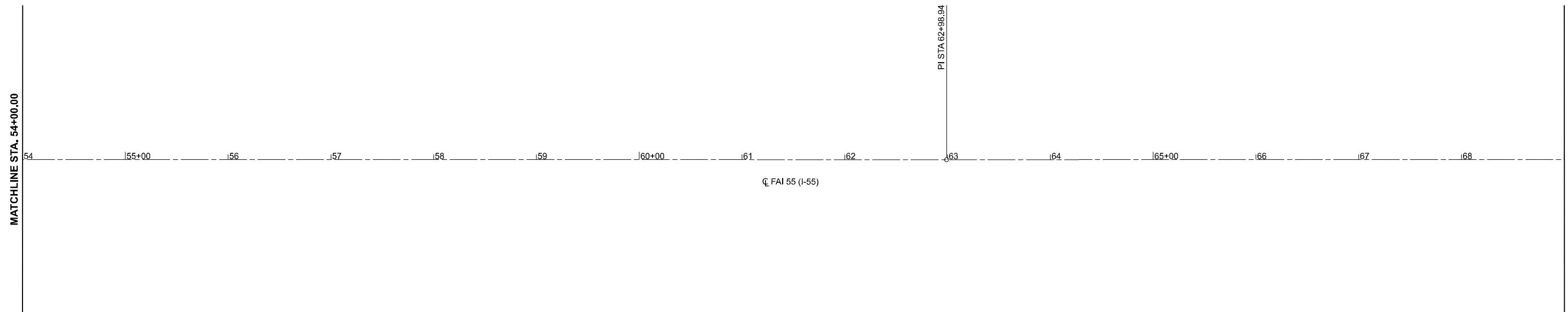
USER NAME = Jonathan.Cox	DESIGNED -	REVISED -
	DRAWN -	REVISED -
	CHECKED -	REVISED -
PLOT DATE = 5/1/2026	DATE -	REVISED -

STATE OF ILLINOIS  
DEPARTMENT OF TRANSPORTATION

PLAN SHEETS  
FAI 155

SCALE: 1"=50' SHEET 18 OF 25 SHEETS STA. 24+00.00 TO STA. 54+00.00

F.A. RTE.	SECTION	COUNTY	TOTAL SHEETS	SHEET NO.
**	D6 CJS 2026-3	***	32	24
CONTRACT NO. 72372				



MODEL: E005\_I55 - Plan Sheet S-40 (Sheet)  
 FILE NAME: c:\p\work\pawid\co\p\1010047172372-shh-Plan-I55-108.dgn

USER NAME = Jonathan.Cox	DESIGNED -	REVISED -
	DRAWN -	REVISED -
	CHECKED -	REVISED -
PLOT DATE = 5/1/2026	DATE -	REVISED -

**STATE OF ILLINOIS  
 DEPARTMENT OF TRANSPORTATION**

**PLAN SHEETS  
 FAI I55**

SCALE: 1"=50'      SHEET 19 OF 25 SHEETS      STA. 54+00.00 TO STA. 84+00.00

F.A. RTE.	SECTION	COUNTY	TOTAL SHEETS	SHEET NO.
**	D6 CJS 2026-3	***	32	25
CONTRACT NO. 72372				

\*\*I-155/I-55/IL 108      \*FAI 155, I-55, FAP 769      \*\*\*LOGAN/MONTGOMERY



MATCHLINE STA. 84+00.00

84 85+00 86 87 88 89 90+00 91 92 93 94 95+00 96 97 98

☉ FAI 55 (I-55)

MATCHLINE STA. 99+00.00



MATCHLINE STA. 99+00.00

99 100+00 101 102 103 104 105+00 106 107 108 109 110+00 111 112 113

☉ FAI 55 (I-55)

MATCHLINE STA. 114+00.00

MODEL: E005\_I55 - Plan Sheet S-42 (Sheet)  
FILE NAME: c:\p\work\pawid\co\p\1010047172372-shh-Plan-I55-108.dgn

USER NAME = Jonathan.Cox	DESIGNED -	REVISED -
	DRAWN -	REVISED -
	CHECKED -	REVISED -
PLOT DATE = 5/1/2026	DATE -	REVISED -

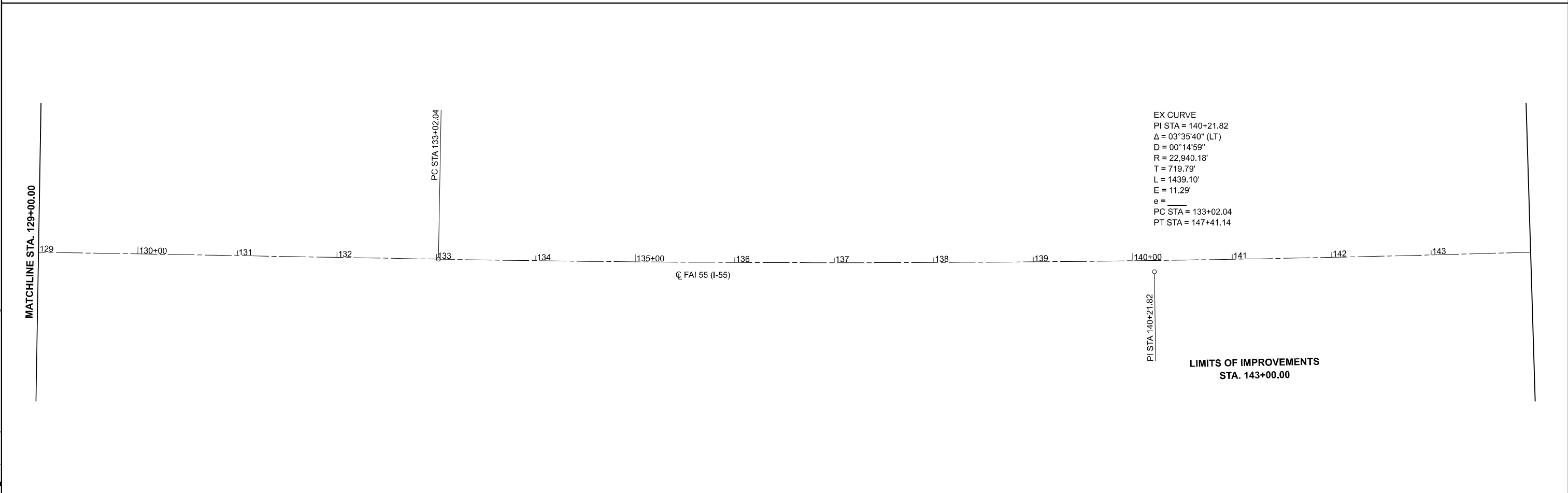
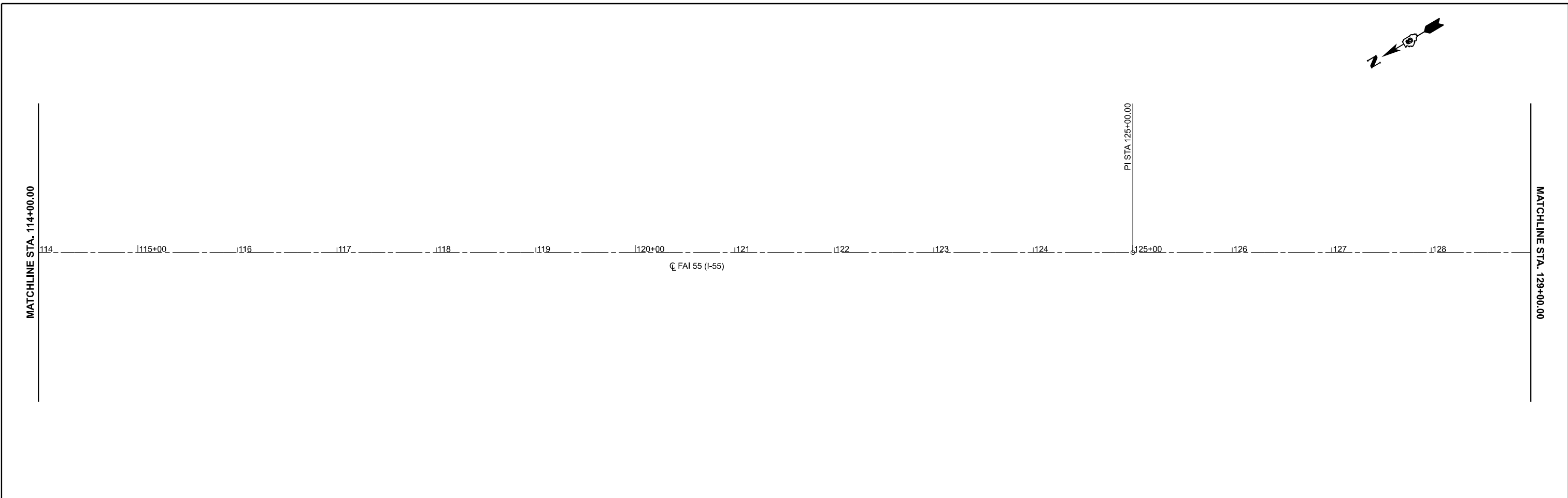
**STATE OF ILLINOIS  
DEPARTMENT OF TRANSPORTATION**

**PLAN SHEETS  
FAI 155**

SCALE: 1"=50' SHEET 20 OF 25 SHEETS STA. 84+00.00 TO STA. 114+00.00

F.A. RTE.	SECTION	COUNTY	TOTAL SHEETS	SHEET NO.
**	D6 CJS 2026-3	***	32	26
CONTRACT NO. 72372				

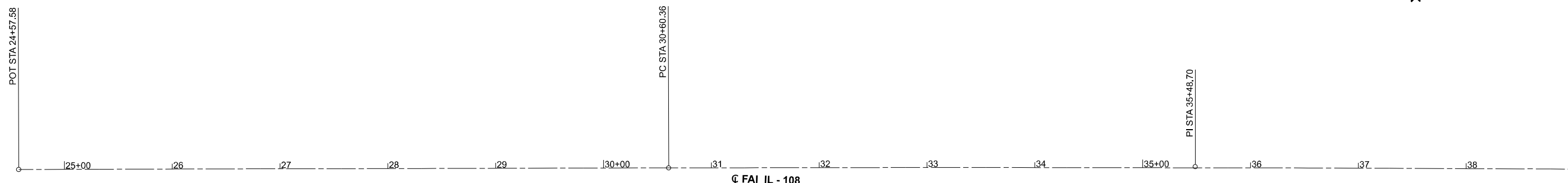
\*\*I-155/I-55/IL 108 \*FAI 155, I-55, FAP 769 \*\*\*LOGAN/MONTGOMERY



MODEL: E005\_I55 - Plan Sheet S-44 (Sheet)  
 FILE NAME: c:\p\work\155\10047172372-shr-Plan-I55-108.dgn

	USER NAME = Jonathan.Cox	DESIGNED -	REVISED -	<b>STATE OF ILLINOIS</b> <b>DEPARTMENT OF TRANSPORTATION</b>	<b>PLAN SHEETS</b> <b>FAI I55</b>				F.A.* RTE.	SECTION	COUNTY	TOTAL SHEETS	SHEET NO.
		DRAWN -	REVISED -						**	D6 CJS 2026-3	***	32	27
		CHECKED -	REVISED -									CONTRACT NO. 72372	
	PLOT DATE = 5/1/2026	DATE -	REVISED -			SCALE: 1"=50'	SHEET 21	OF 25 SHEETS	STA. 114+00.00	TO STA. 144+00.00		ILLINOIS	FED. AID PROJECT

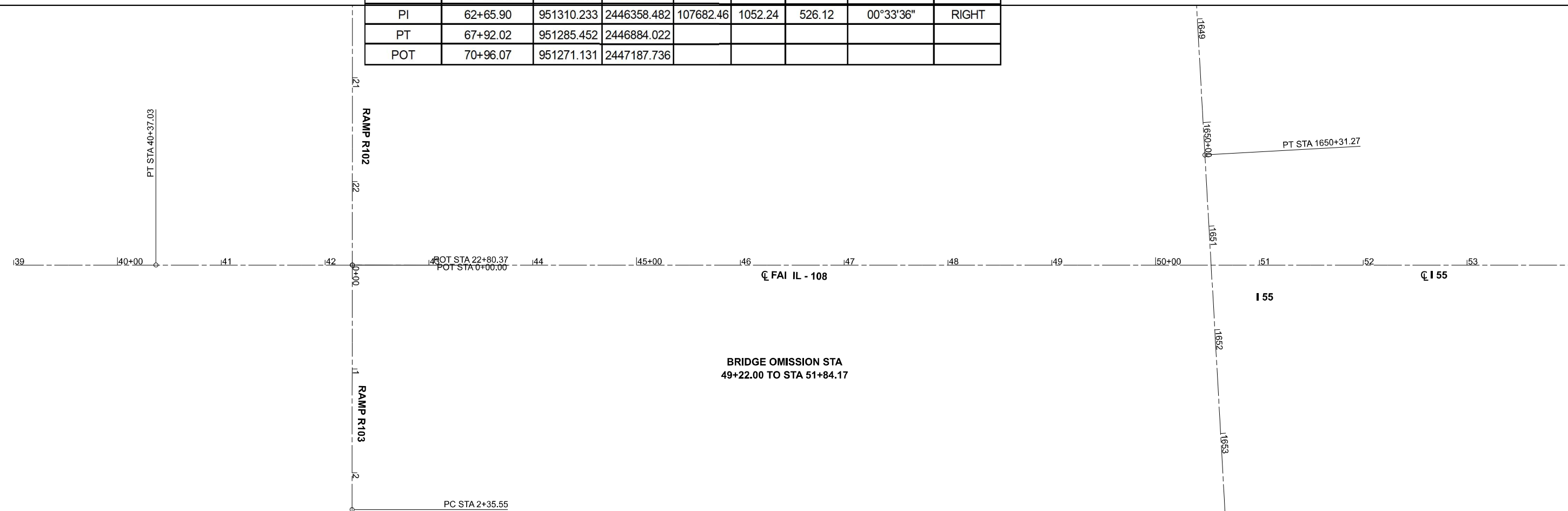
\*\*I-155/I-55/IL 108    \*FAI 155, I-55, FAP 769    \*\*\*LOGAN/MONTGOMERY



LIMITA OF IMROEMENT  
STA 24+57.58

HORIZONTAL ALIGNMENT CONTROL								
POINT TYPE	STATION	NORTHING	EASTING	RADIUS	LENGTH	TANGENT	DELTA/THETA	ROTATION
ALIGNMENT NAME:		E008_108						
DESCRIPTION:		IL 108 MAINLINE						
POT	24+57.58	951442.906	2442552.491					
PC	30+60.36	951425.660	2443155.024					
PI	35+48.70	951411.689	2443643.163	111842.64	976.67	488.34	00°30'01"	RIGHT
PT	40+37.03	951393.455	2444131.160					
PC	57+39.78	951329.877	2445832.725					
PI	62+65.90	951310.233	2446358.482	107682.46	1052.24	526.12	00°33'36"	RIGHT
PT	67+92.02	951285.452	2446884.022					
POT	70+96.07	951271.131	2447187.736					

EX CURVE  
PI STA = 35+48.70  
Δ = 00°30'01" (RT)  
D = 00°03'04"  
R = 111,842.64'  
T = 488.34'  
L = 976.67'  
E = 1.07'  
e = \_\_\_\_\_  
PC STA = 30+60.36  
PT STA = 40+37.03



MODEL: E008\_108 - Plan Sheet I108 (Sheet)  
FILE NAME: c:\p\work\155\108\108.dwg

USER NAME = Jonathan.Cox	DESIGNED -	REVISED -
	DRAWN -	REVISED -
	CHECKED -	REVISED -
PLOT DATE = 5/1/2026	DATE -	REVISED -

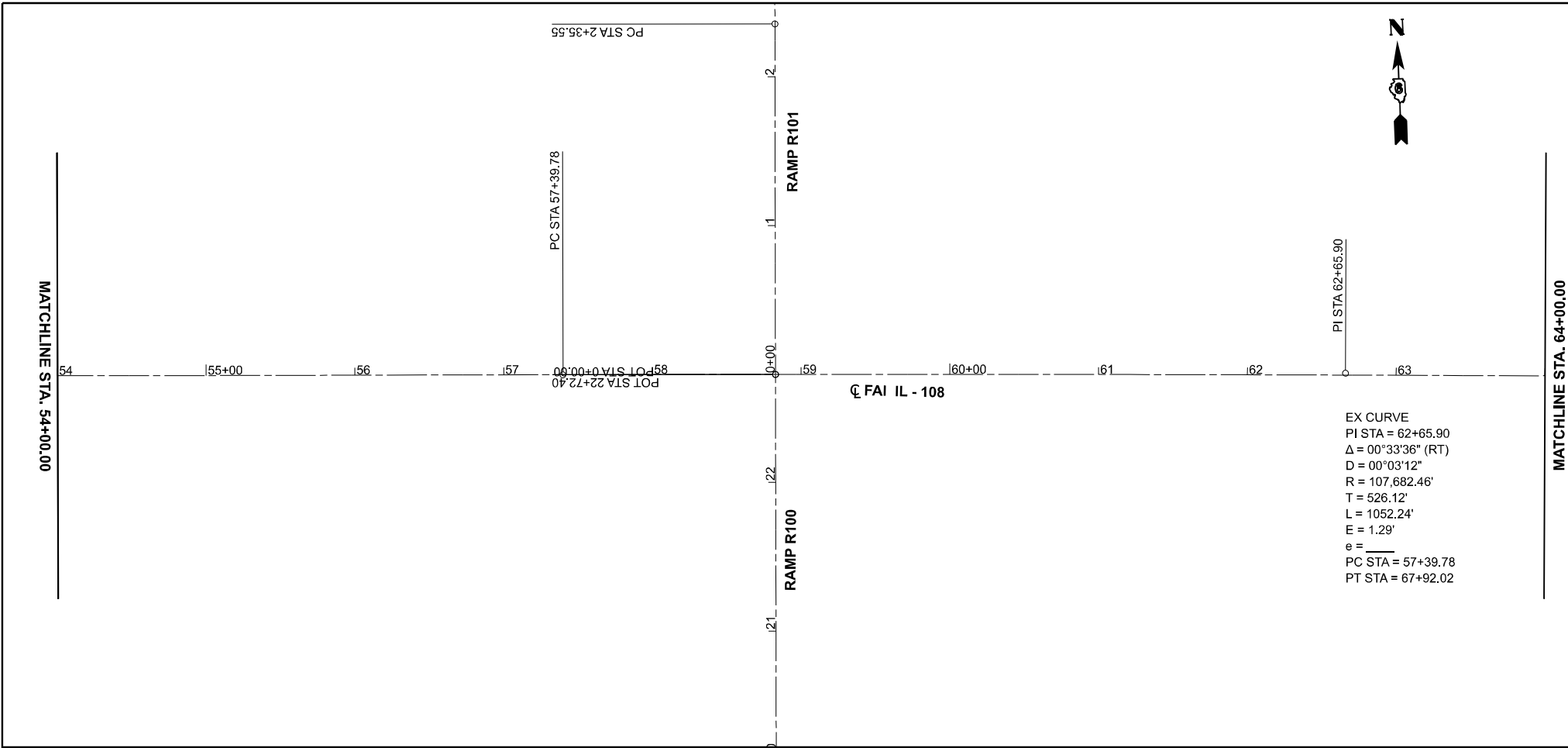
STATE OF ILLINOIS  
DEPARTMENT OF TRANSPORTATION

PLAN SHEETS  
FAI I55/I108

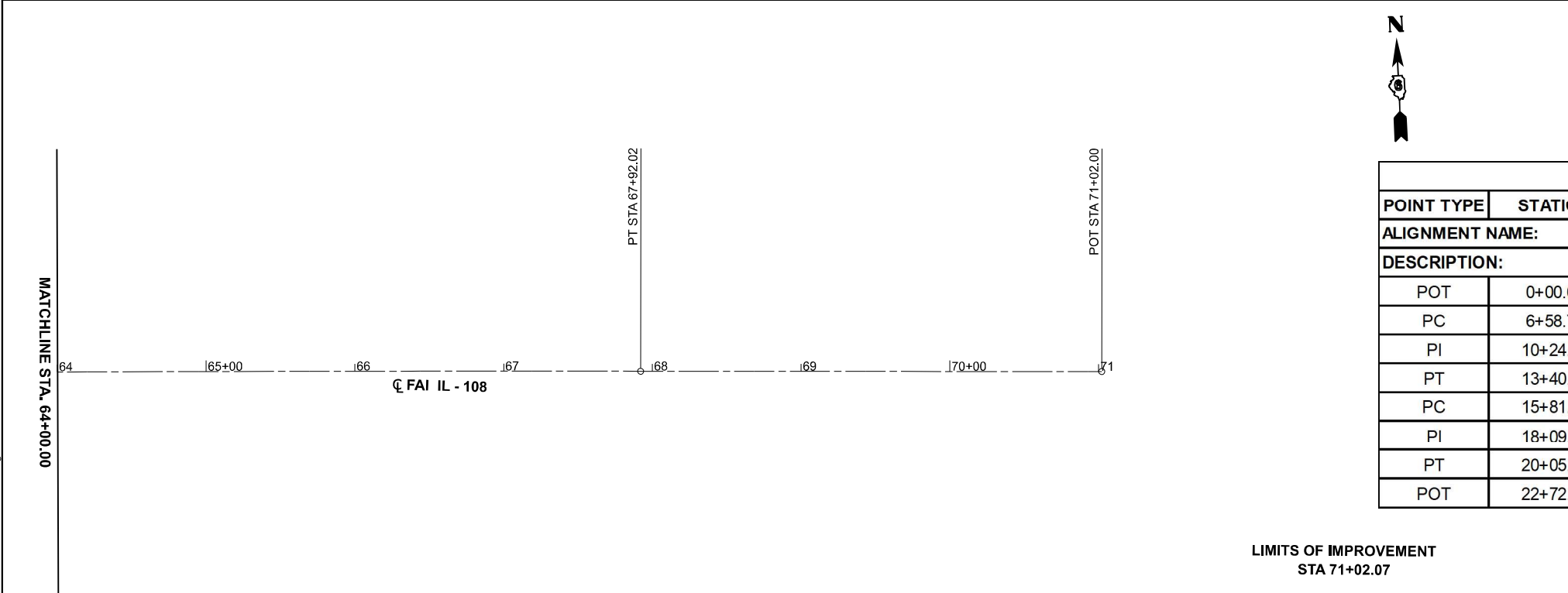
SCALE: 1"=50' SHEET 22 OF 25 SHEETS STA. 24+57.58 TO STA. 39+57.58

F.A. RTE.	SECTION	COUNTY	TOTAL SHEETS	SHEET NO.
**	D6 CJS 2026-3	***	32	28
CONTRACT NO. 72372				
ILLINOIS FED. AID PROJECT				

\*\*I-155/I-55/IL 108 \*FAI 155, I-55, FAP 769 \*\*\*LOGAN/MONTGOMERY



EX CURVE  
 PI STA = 62+65.90  
 $\Delta = 00^{\circ}33'36''$  (RT)  
 $D = 00^{\circ}03'12''$   
 $R = 107.682.46'$   
 $T = 526.12'$   
 $L = 1052.24'$   
 $E = 1.29'$   
 $e =$   
 PC STA = 57+39.78  
 PT STA = 67+92.02



LIMITS OF IMPROVEMENT  
 STA 71+02.07

HORIZONTAL ALIGNMENT CONTROL								
POINT TYPE	STATION	NORTHING	EASTING	RADIUS	LENGTH	TANGENT	DELTA THETA	ROTATION
ALIGNMENT NAME:		R100						
DESCRIPTION:		IL 108 RAMP						
POT	0+00.00	949306.753	2445255.172					
PC	6+58.70	949965.073	2445277.487					
PI	10+24.21	950330.376	2445289.870	763.49	681.79	365.51	51°09'53"	RIGHT
PT	13+40.49	950549.807	2445582.188					
PC	15+81.88	950694.723	2445775.240					
PI	18+09.00	950831.073	2445956.881	476.79	423.92	227.12	50°56'32"	LEFT
PT	20+05.80	951058.034	2445965.457					
POT	22+72.40	951324.447	2445975.524					

MODEL: E008\_108 - Plan Sheet 1108-2 (Sheet)  
 FILE NAME: c:\p\work\155\108\1108-2\1108-2.dwg

USER NAME = Jonathan.Cox	DESIGNED -	REVISED -
	DRAWN -	REVISED -
	CHECKED -	REVISED -
PLOT DATE = 5/1/2026	DATE -	REVISED -

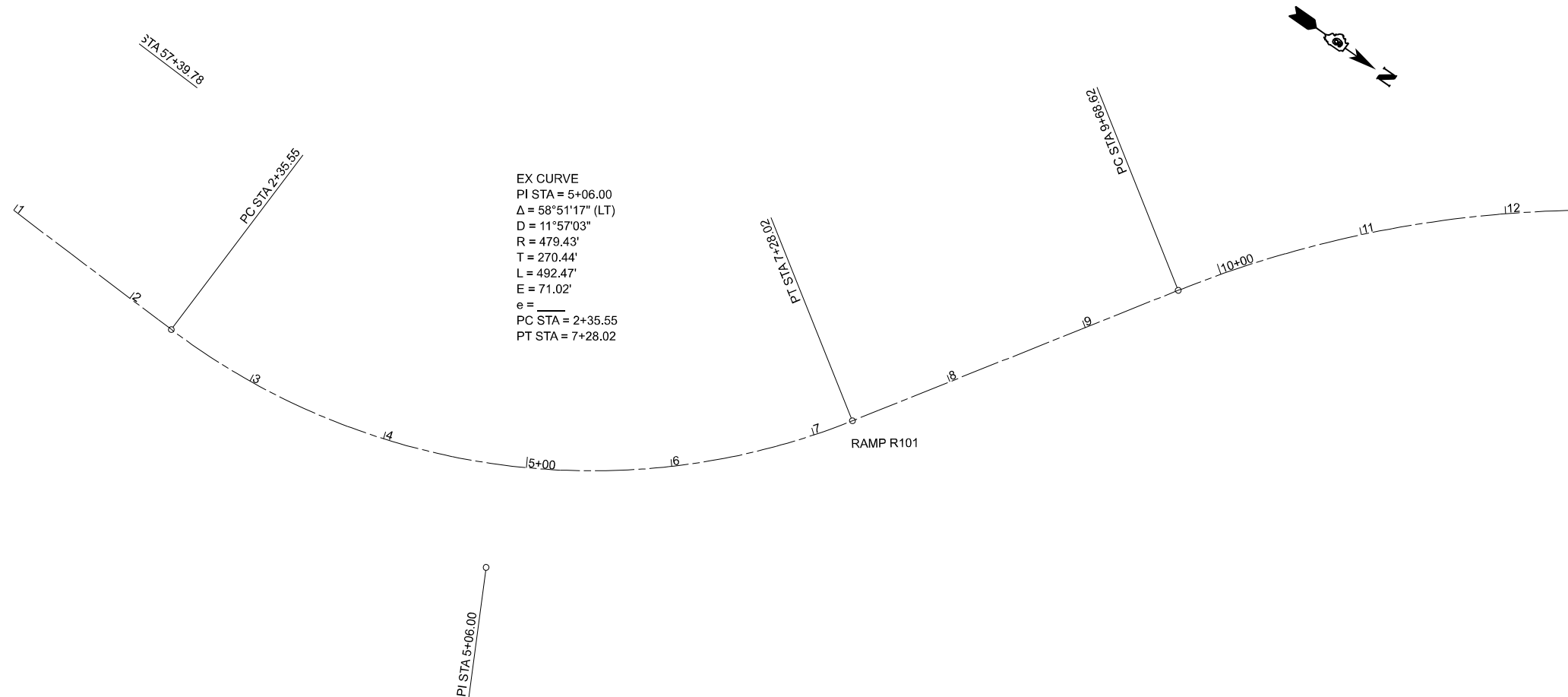
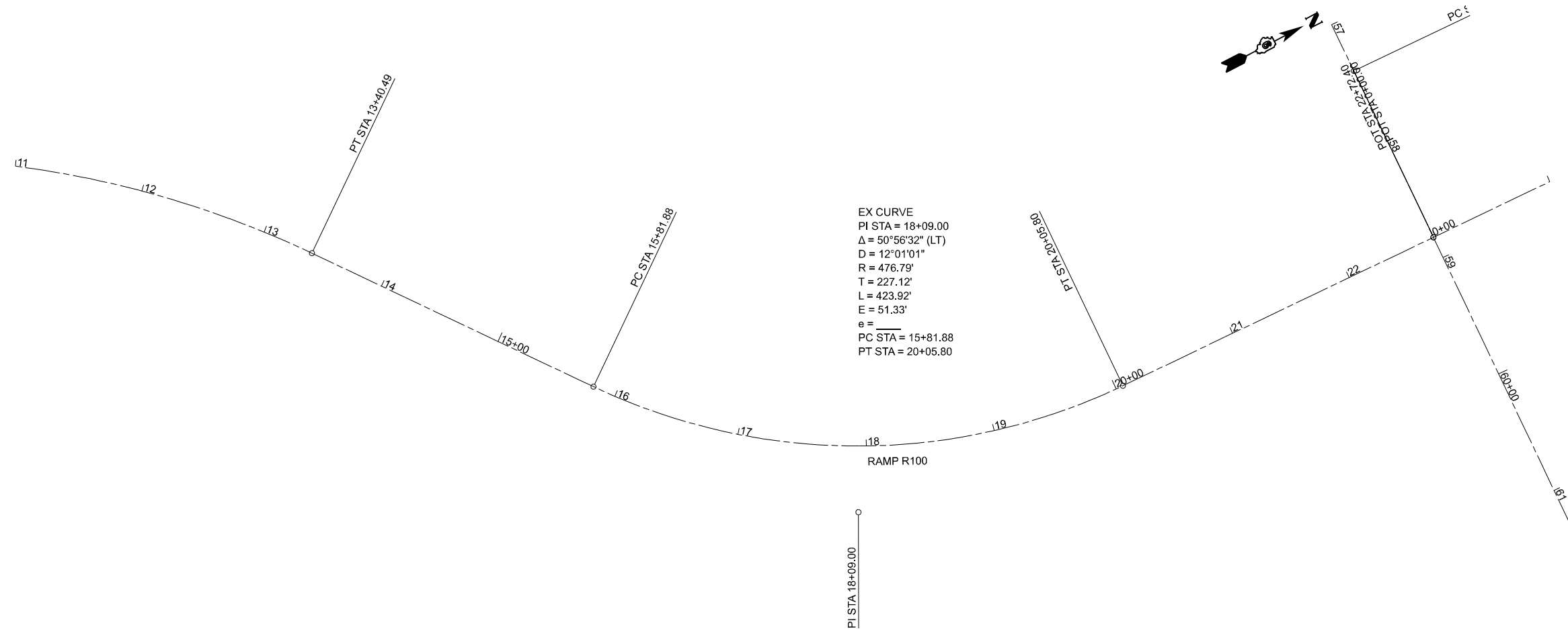
STATE OF ILLINOIS  
 DEPARTMENT OF TRANSPORTATION

PLAN SHEETS  
 FAI 155/108

SCALE: 1"=50' SHEET 23 OF 25 SHEETS STA. 54+00.00 TO STA. 74+00.00

F.A. RTE.	SECTION	COUNTY	TOTAL SHEETS	SHEET NO.
**	D6 CJS 2026-3	***	32	29
CONTRACT NO. 72372				

ILLINOIS FED. AID PROJECT \*\*\*LOGAN/MONTGOMERY



MODEL: R100 - Plan Sheet FA (Sheet)  
 FILE NAME: c:\p\work\wvrd\cpx\1010047172372-shr-Plan-155-108.dgn

USER NAME = Jonathan.Cox	DESIGNED -	REVISED -
	DRAWN -	REVISED -
	CHECKED -	REVISED -
PLOT DATE = 5/1/2026	DATE -	REVISED -

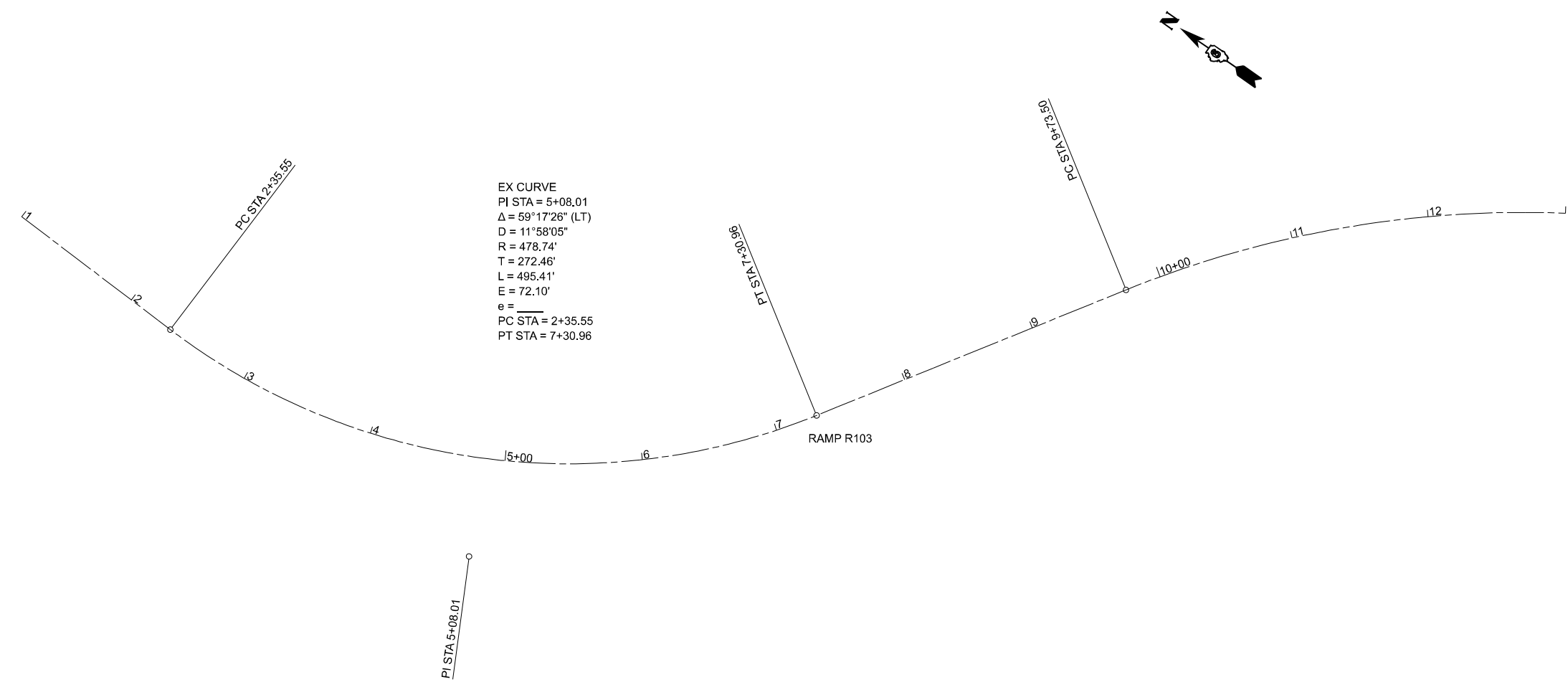
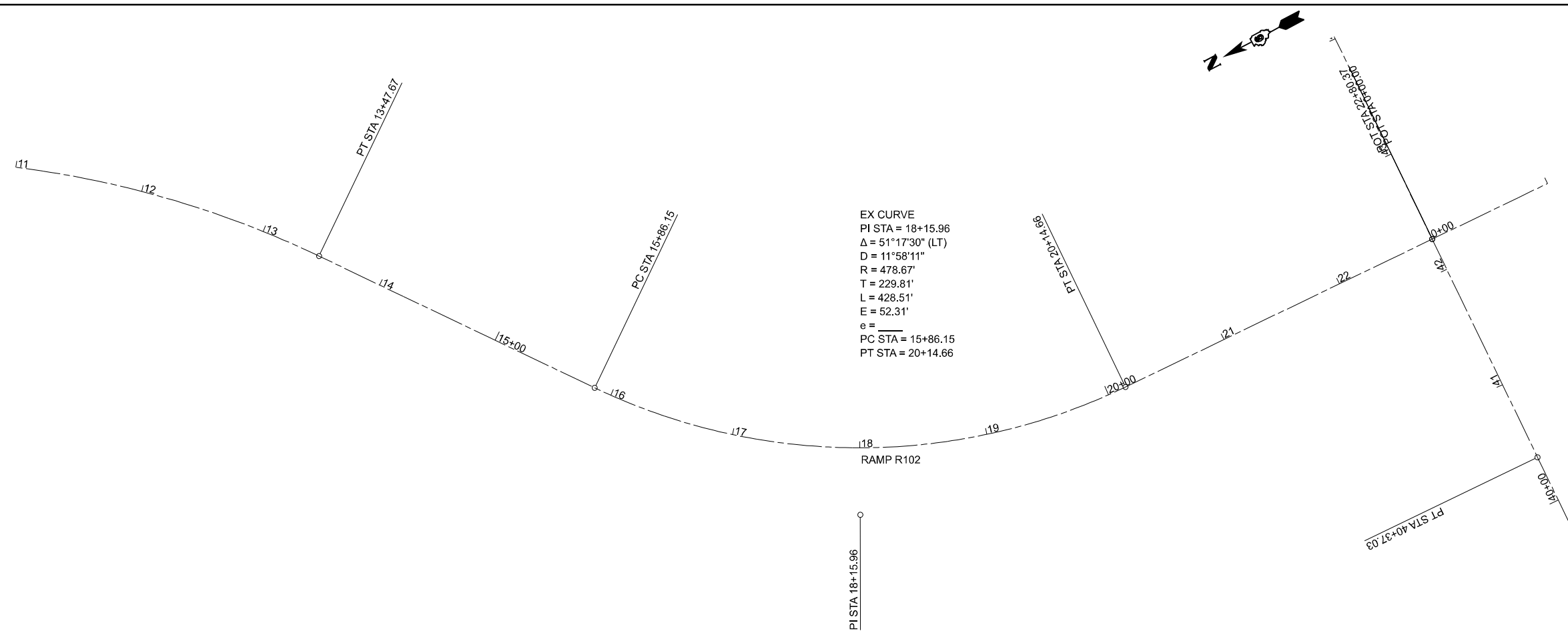
STATE OF ILLINOIS  
 DEPARTMENT OF TRANSPORTATION

SCALE: 1"=50' SHEET 24 OF 25 SHEETS STA. 11+00.00 TO STA. 24+00.00

PLAN SHEETS  
 FAI 155/108 RAMPS

F.A.* RTE.	SECTION	COUNTY	TOTAL SHEETS	SHEET NO.
**	D6 CJS 2026-3	***	32	30
CONTRACT NO. 72372				

ILLINOIS FED. AID PROJECT  
 \*\*I-155/I-55/IL 108 \*FAI 155, I-55, FAP 769 \*\*\*LOGAN/MONTGOMERY



MODEL: R102 - Plan Sheet RC-2 [Sheet]  
 FILE NAME: c:\p\work\evr\10047172372-shr-Plan-155-108.dgn

USER NAME = Jonathan.Cox	DESIGNED -	REVISED -
	DRAWN -	REVISED -
	CHECKED -	REVISED -
PLOT DATE = 5/1/2026	DATE -	REVISED -

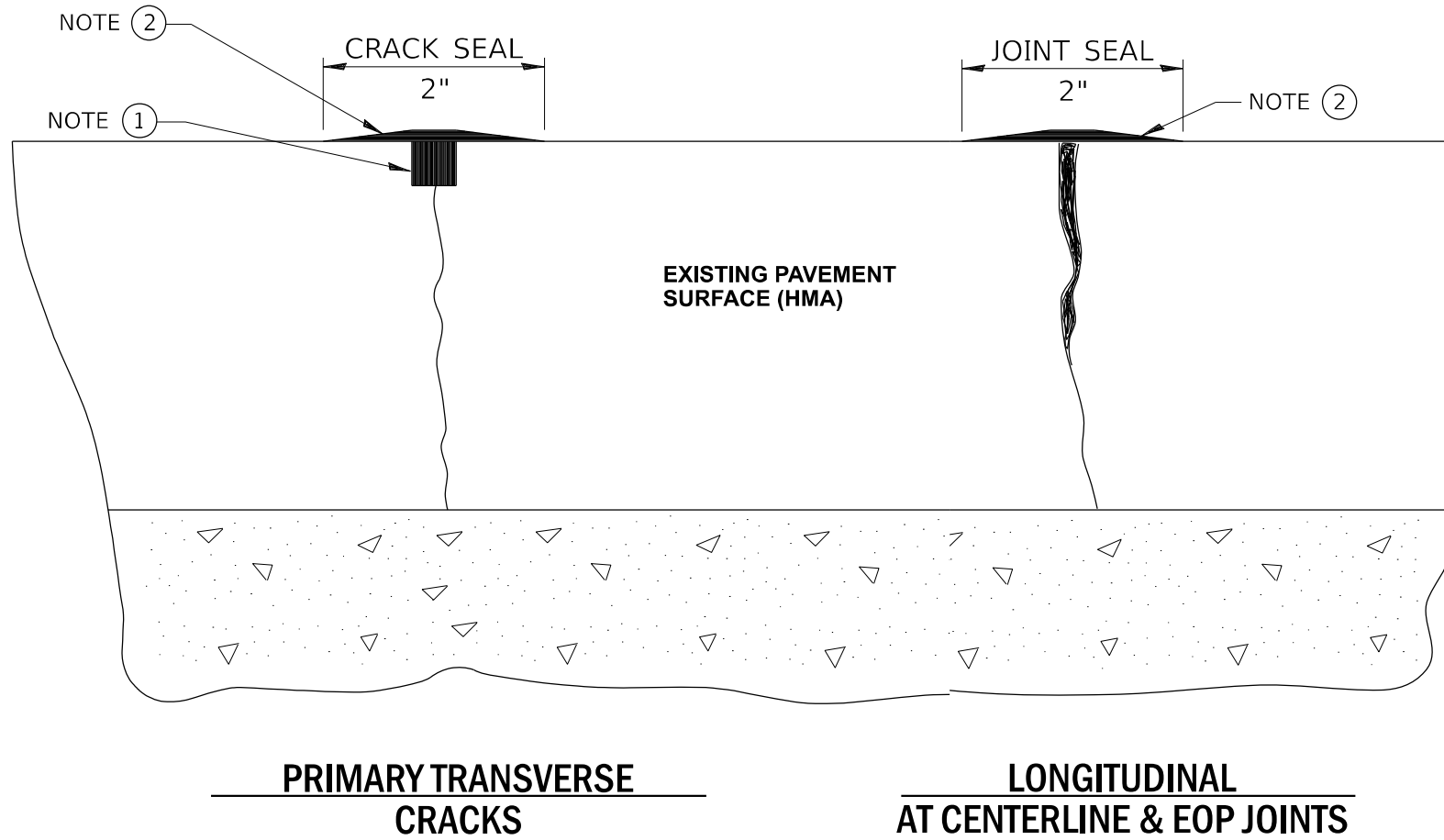
**STATE OF ILLINOIS  
 DEPARTMENT OF TRANSPORTATION**

<b>PLAN SHEETS FAI 155/108 RAMPS</b>	
SCALES: 1"=50'	SHEET 25 OF 25 SHEETS
STA. 11+07.32	TO STA. 24+07.32

FAI RTE.	SECTION	COUNTY	TOTAL SHEETS	SHEET NO.
**	D6 CJS 2026-3	***	32	31
CONTRACT NO. 72372				

ILLINOIS FED. AID PROJECT  
 \*\*I-155/I-55/IL 108 \*FAI 155, I-55, FAP 769 \*\*\*LOGAN/MONTGOMERY

# CRACK & JOINT SEALING DETAILS



**NOTES:**

- ① ROUTE OR SAW TO  $\frac{3}{4}$ " WIDE BY  $\frac{3}{4}$ " DEEP; (1:1 RATIO).
- ② OVERFILL WITH SEALANT: SQUEEGE TO PROVIDE 2" WIDE FLUSH "BAND-AID" EFFECT; FEATHER EDGES FLUSH.

**CRACK OR JOINT SEAL IN AREAS ADJACENT TO EXISTING PAVEMENT MARKINGS SHALL BE REDUCED OR ELIMINATED AS DIRECTED BY THE ENGINEER.**

MODEL: Details sheet [Sheet]  
FILE NAME: c:\p\work\pav\to\co\m\1010047172372-Details.dgn

USER NAME = Jonathan.Cox  PLOT DATE = 4/13/2026	DESIGNED - DRAWN - CHECKED - DATE -	REVISED - REVISED - REVISED - REVISED -	<b>STATE OF ILLINOIS DEPARTMENT OF TRANSPORTATION</b>	<b>CRACK &amp; JOINT SEALING DETAILS</b>  SCALE:      SHEET 1    OF 1    SHEETS    STA.                      TO STA.	F.A. RTE. **	SECTION D6 CJS 2026-3	COUNTY ***	TOTAL SHEETS 32	SHEET NO. 32
CONTRACT NO. 72372									
ILLINOIS FED. AID PROJECT									