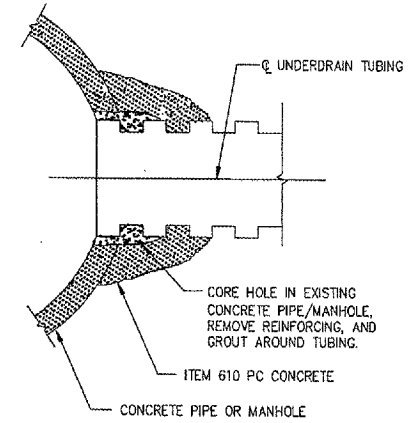
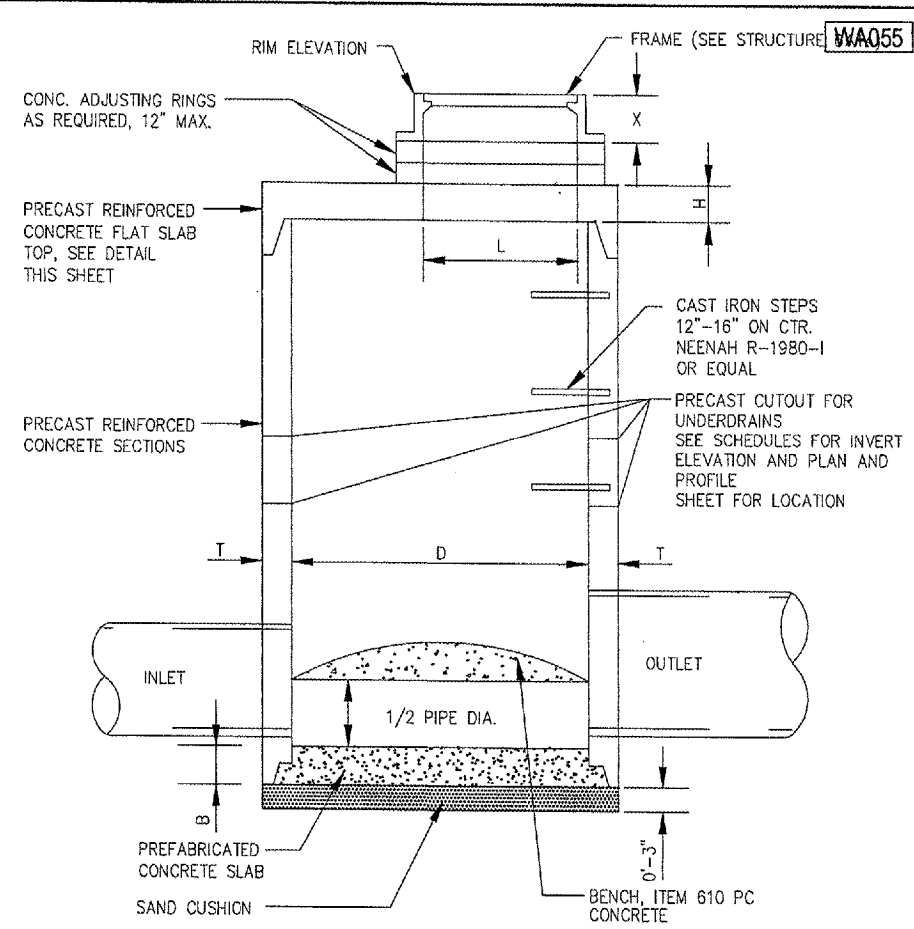


- NOTES**
1. FOR STRUCTURE LOCATIONS SEE STORM SEWER SCHEDULE.
 2. FRAME AND GRATE, ADJUSTING RINGS OR RISER SHALL BE MORTARED.
 3. ALL MANHOLE AND INLET STRUCTURES TO BE PRECAST.

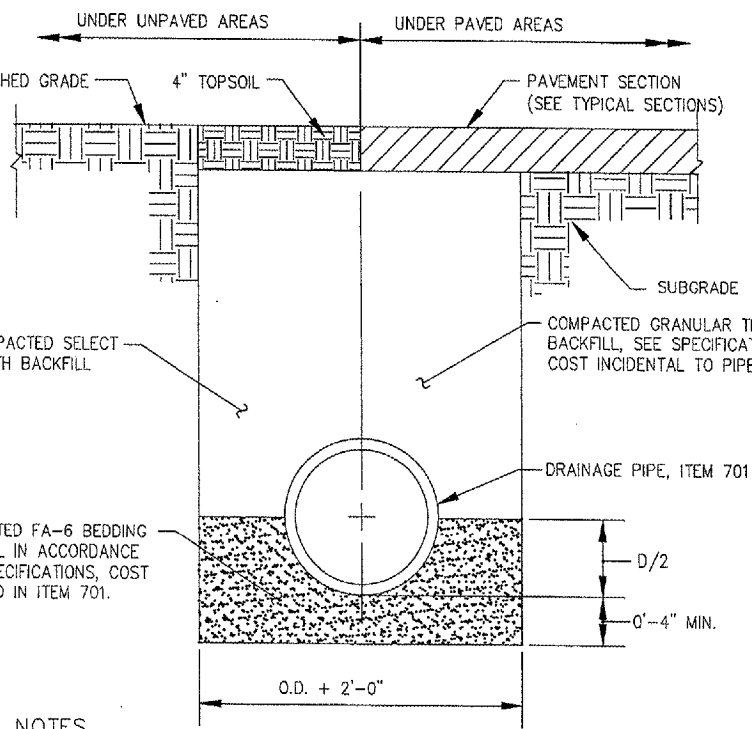
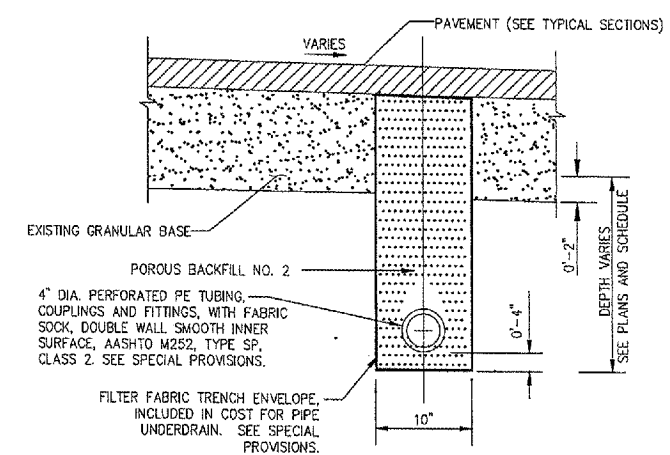


STORM SEWER CONCRETE COLLAR AND GROUT CONNECTION



- NOTES**
1. FOR FRAME AND LID INFORMATION SEE STRUCTURE DATA.
 2. CENTER OF FRAME TO BE USED FOR LOCATING STRUCTURE. FOR STRUCTURE LOCATIONS AND ADDITIONAL INFORMATION SEE SCHEDULE.
 3. ALL STRUCTURES TO BE PRECAST REINFORCED CONCRETE SECTIONS; BENCHES MAY BE CAST IN PLACE.

MANHOLE WITH FLAT SLAB TOP (DOT STANDARD 602406-MODIFIED)

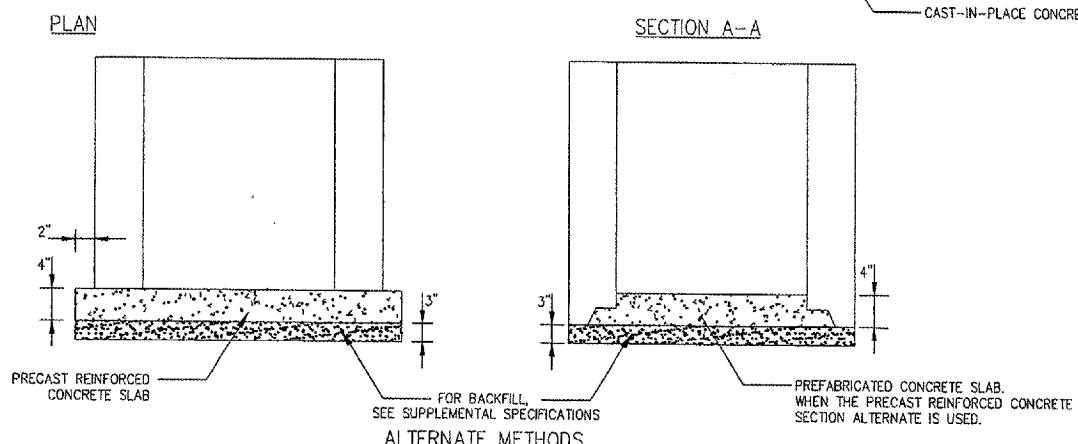


- NOTES**
1. UNSUITABLE MATERIAL ENCOUNTERED DURING PLACEMENT OF BEDDING SHALL BE REMOVED AND REPLACED.
 2. WITHIN 3 FEET OF PAVED AREA, GRANULAR BACKFILL IS TO BE USED INSTEAD OF EARTH BACKFILL.
 3. AT CONTRACTOR'S OPTION IDOT CONTROLLED LOW STRENGTH MATERIAL WITH A HIGH EARLY STRENGTH, "FLASH FILL", MAY BE USED INSTEAD OF GRANULAR TRENCH BACKFILL UNDER PAVEMENTS.

PIPE TRENCH

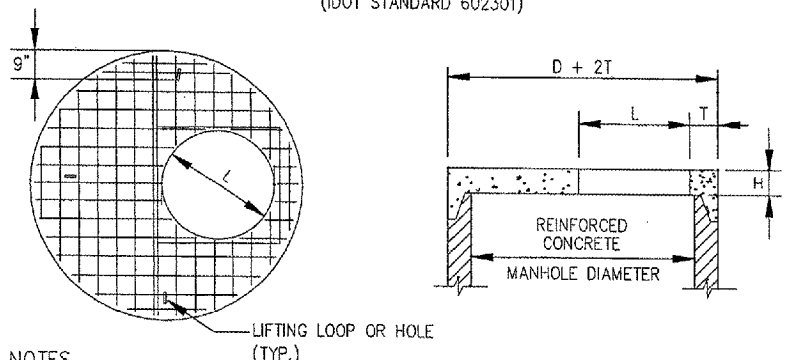
UNDERDRAIN UNDER PAVEMENT

DETAILS SHOWN ARE NOT TO SCALE



- NOTES**
1. SEE DRAINAGE AND UNDERDRAIN SCHEDULE FOR LOCATION, SIZE AND NUMBER OF PIPE CONNECTIONS.
 2. INLETS TO BE PRECAST REINFORCED CONCRETE SECTIONS (T = 3").

INLET TYPE A (DOT STANDARD 602301)



- NOTES**
1. ADDITIONAL TOP AND BOTTOM BARS PLACED ADJACENT TO ACCESS HOLE.
 2. MINIMUM 1" COVER ON STEEL BARS.
 3. THREE LIFTING LOOPS OR HOLES.
 4. MINIMUM STEEL REINFORCEMENT IN EACH DIRECTION TO BE WWF 1.06 SQ. IN./FT. IN ACCORDANCE WITH AASHTO M199 AND IDOT STANDARDS.
 5. FOR "L" DIMENSION SEE STORM SEWER SCHEDULES.

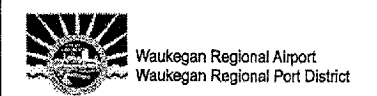
PRECAST REINFORCED CONCRETE FLAT SLAB TOP (DOT STANDARD 602601)

STRUCTURE DATA

STRUCTURE NUMBER	STRUCTURE TYPE	INSIDE DIA. "D" (IN.)	WALL THICKNESS "T" (IN.)	TOP THICKNESS "H" (IN.)	BOTTOM THICKNESS "B" (IN.)	FRAME HEIGHT "X" (IN.)	HOLE OPENING "L" (IN.)	FRAME TYPE (EAST JORDAN)	COVER/GRATE (EAST JORDAN)
INL 10	INLET	24	3	---	4	6	24	1020	TYPE M1
INL 11	INLET	24	3	---	4	6	24	1020	TYPE M1
MH 12	MANHOLE	48	5	6	6	6	24	1020	TYPE M1
FES 10	F.E.S.	12	---	---	---	---	---	---	SEE DETAIL



HANSON PROFESSIONAL SERVICES INC.
 815 Commerce Drive, Suite 200
 Oak Brook, Illinois 60523
 Telephone: 630.990.3800
 Fax: 630.990.3801



3580 North McAree Road
 Waukegan, Illinois 60087
 Phone: 847.244.0055
 Fax: 847.244.3813

REPAIR SELECTED PAVEMENT AREAS, REHABILITATE HANGAR TAXILANES AND SERVICE ROAD, AND CONSTRUCT NEW HANGAR PAVEMENTS

A.I.P. PROJ.: 3-17-0105-B30
 I.L. PROJ.: UGN-3449

No.	Drawing Issue Description	Date	By

Date: MAY 06, 2005
 Sheet Title: DRAINAGE DETAILS

831-04TXD
 Project Number
 SJM 8/01/06
 Layout By Date
 RPH 8/01/06
 Designed By Date
 RMH/TMM 04/11/05
 Reviewed By Date
 SJM
 Drawn By Sheet No.

05/06/2005 09:24 PM I:\04\04080501\03\10\TXD\CIVIL\SHSHEET\08 Drainage Details_01.dgn