



HANSON PROFESSIONAL SERVICES INC.

815 Commerce Drive, Suite 200
Oak Brook, Illinois 60523
Telephone: 630.990.3800
Fax: 630.990.3801

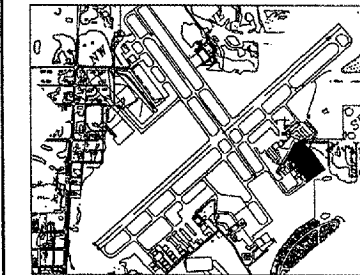


Waukegan Regional Airport
Waukegan Regional Port District

3580 North McAree Road
Waukegan, Illinois 60087
Phone: 847.244.0055
Fax: 847.244.3813

REPAIR SELECTED PAVEMENT AREAS, REHABILITATE HANGAR TAXILANES AND SERVICE ROAD, AND CONSTRUCT NEW HANGAR PAVEMENTS

A.I.P. PROJ.: 3-17-0105-B30
IL. PROJ.: UGN-3449



KEY MAP

LEGEND

- ⊙ EXISTING STORM SEWER
- ⊞ EXISTING STORM SEWER MANHOLE
- ◻ EXISTING STORM SEWER INLET
- ⊞ PROPOSED STORM SEWER
- ⊞ PROPOSED STORM SEWER STRUCTURE
- ⊙ EXISTING WATER VALVE
- ⊞ EXISTING TELEPHONE BOX
- ⊞ EXISTING ELECTRICAL BOX
- N NORTHING
- E EASTING
- 600.00 PROPOSED ELEVATION
- 599.00 EXISTING ELEVATION
- M.E. MEET EXISTING

- NOTES**
- FOR ADDITIONAL STORM SEWER AND UNDERDRAIN INFORMATION, SEE SCHEDULES.
 - CONTRACTOR IS REQUIRED TO FIELD VERIFY EXISTING UTILITY LOCATIONS.
 - ALIGNMENT AND COORDINATES ARE BASED ON STATE PLANE COORDINATES. ENGINEER WILL PROVIDE CONTROL POINTS FOR PROJECT, SEE SPECIAL PROVISIONS.



No.	Drawing Issue Description	Date	By

Date: MAY 06, 2005

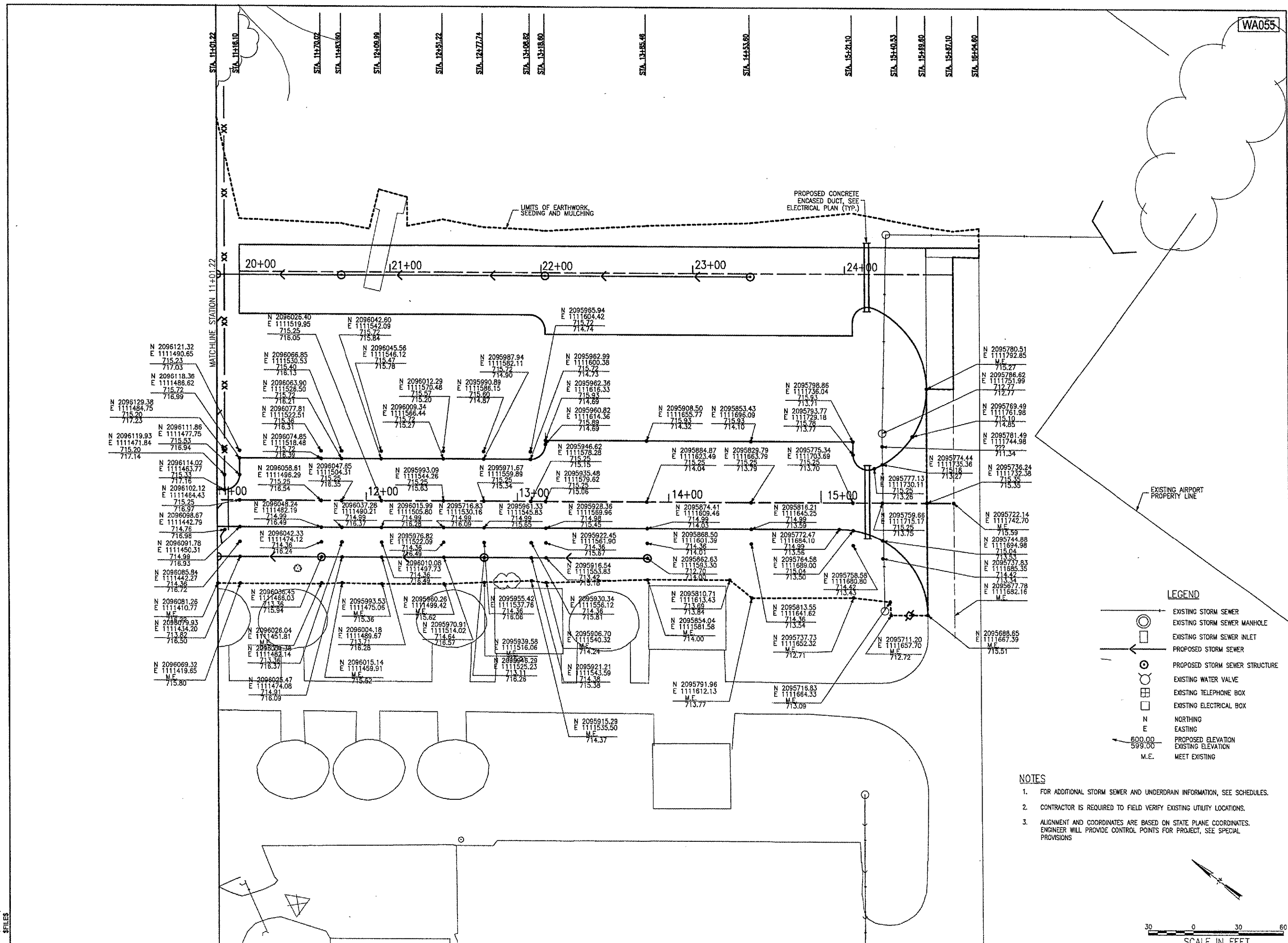
Sheet Title: STAKING PLAN TAXILANE ALIGNMENT 10

STAKING PLAN TAXILANE ALIGNMENT 10

831-04TXVD
Project Number

AAP	02/28/05
Layout By	Data
AAP	02/28/05
Designed By	Data
TMM	05/05/05
Reviewed By	Data
AAP	
Drawn By	

STATES SPILERS



WA055