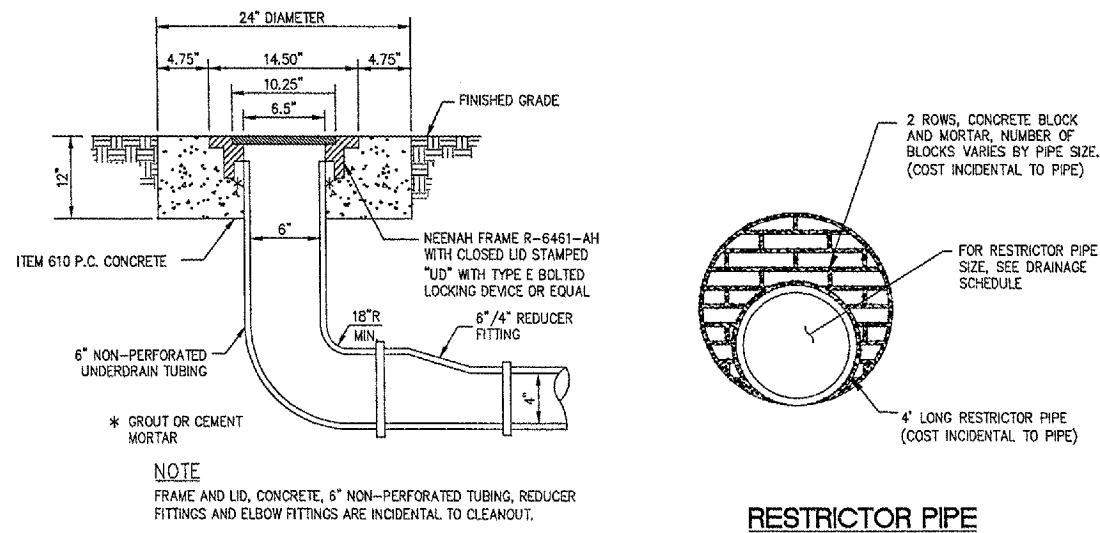


**STORM SEWER SCHEDULE**

| STRUCTURE DATA   |            |            |                  |                          |                          |                |               |                                     | SEWER DATA       |            |         |
|------------------|------------|------------|------------------|--------------------------|--------------------------|----------------|---------------|-------------------------------------|------------------|------------|---------|
| STRUCTURE NUMBER | NORTHING   | EASTING    | STRUCTURE TYPE   | FRAME TYPE (EAST JORDAN) | COVER/DATE (EAST JORDAN) | DIAMETER (IN.) | RIM ELEVATION | INVERT ELEVATION                    | PAY LENGTH (FT.) | SIZE (IN.) | SLOPE % |
| MH-8             | 2095917.23 | 1111783.23 | MANHOLE          | 1585                     | TYPE 1                   | 48             | 715.14        | NW 711.00                           | 132              | 12         | 0.75    |
| MH-9             | 2096026.16 | 1111703.47 | MANHOLE          | 1585                     | TYPE 1                   | 48             | 715.14        | SE 710.01<br>NW 709.86              | 132              | 15         | 0.75    |
| MH-10            | 2096135.08 | 1111623.72 | MANHOLE          | 1585                     | TYPE 1                   | 48             | 715.14        | SE 708.67<br>NW 708.32              | 79               | 18         | 0.50    |
| MH-11            | 2096201.65 | 1111574.99 | MANHOLE          | 1585                     | TYPE 1                   | 60             | 714.13        | SE 707.85<br>SW 707.15              | 187              | 24         | 0.35    |
| MH-7             | 2096088.82 | 1111420.88 | MANHOLE          | 1585                     | TYPE 1                   | 60             | 713.69        | -                                   | 139              | 8" PVC     | 2.30    |
| I-1              | 2096274.08 | 1111453.55 | INLET            | 1020                     | TYPE M1                  | 24             | 716.14        | SE 714.14                           |                  |            |         |
| MH-11            | 2096201.65 | 1111574.99 | MANHOLE          | 1585                     | TYPE 1                   | 60             | 714.13        | SE 707.85<br>SW 707.15              |                  |            |         |
| MH-4             | 2095859.38 | 1111588.86 | MANHOLE          | 1585                     | TYPE 1                   | 48             | 712.70        | NW 708.90                           | 105              | 12         | 0.60    |
| MH-5             | 2095946.29 | 1111525.23 | MANHOLE          | 1585                     | TYPE 1                   | 48             | 713.11        | SE 708.27<br>NW 707.92              | 105              | 15         | 0.50    |
| MH-6             | 2096033.20 | 1111461.59 | MANHOLE          | 1585                     | TYPE 1                   | 48             | 713.36        | SE 707.29<br>NW 706.94              | 66               | 18         | 0.60    |
| MH-7             | 2096088.82 | 1111420.88 | MANHOLE          | 1585                     | TYPE 1                   | 60             | 713.69        | SE 706.54<br>NE 706.50<br>NW 705.94 | 194              | 24         | 0.35    |
| MH-16            | 2096247.87 | 1111304.43 | MANHOLE          | 1585                     | TYPE 1                   | 60             | 714.85        | SE 705.26<br>NW 705.11              | 128              | 24         | 0.35    |
| MH-17            | 2096371.02 | 1111257.31 | MANHOLE          | 1585                     | TYPE 1                   | 60             | 713.89        | SE 704.86<br>NW 703.56              | 222              | 24         | 0.35    |
| MH-18            | 2096538.83 | 1111107.18 | MANHOLE          | 1585                     | TYPE 1                   | 60             | 711.87        | SE 703.78<br>NW 703.68              | 146              | 24         | 0.35    |
| MH-19            | 2096650.62 | 1111007.17 | MANHOLE          | 1585                     | TYPE 1                   | 60             | 710.58        | SE 703.17<br>W 703.02               | 77               | 24         | 0.35    |
| EXISTING 6F      | 2096650.53 | 1110927.32 | EXISTING MANHOLE |                          |                          |                | 708.16        | E 702.75<br>NE 698.50               |                  |            |         |

\*\* PLACE 4" DIA. PVC RESTRICTOR PIPE AT WEST INVERT (ELEV=703.02) OF MANHOLE MH-19 (SEE DETAIL)



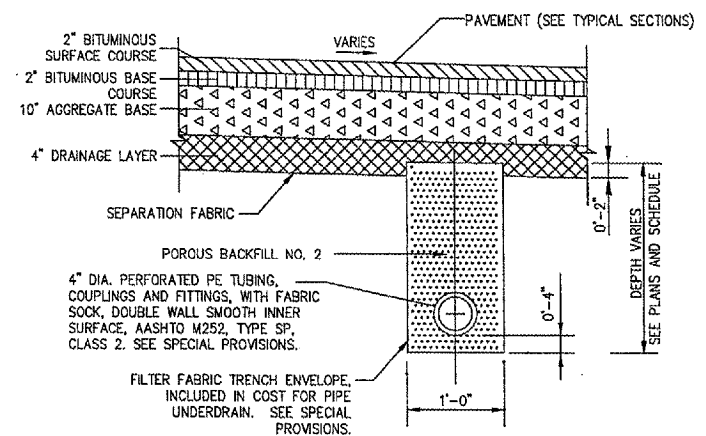
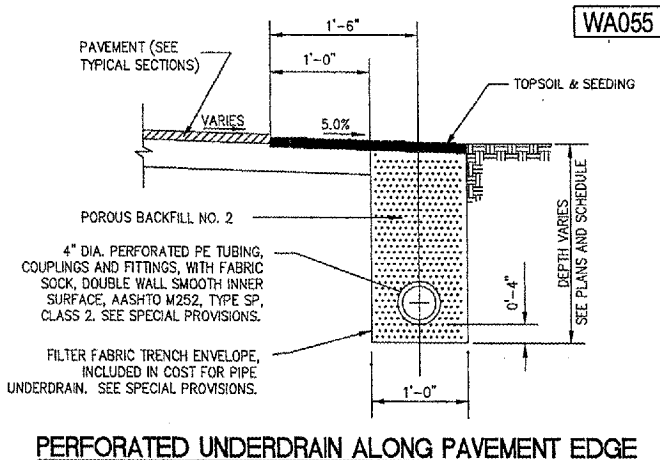
**UNDERDRAIN CLEANOUT**

**RESTRICTOR PIPE**

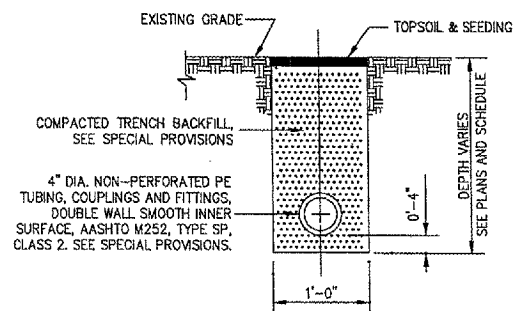
**UNDERDRAIN SCHEDULE**

| STRUCTURE DATA   |            |            |                 |               |                                     | SEWER DATA       |         |
|------------------|------------|------------|-----------------|---------------|-------------------------------------|------------------|---------|
| STRUCTURE NUMBER | NORTHING   | EASTING    | STRUCTURE TYPE  | RIM ELEVATION | INVERT ELEVATION                    | PAY LENGTH (FT.) | SLOPE % |
| U-1              | 2095889.66 | 1111666.50 | CLEANOUT        | 715.31        | NE 713.38                           | 214.5            | 0.50%   |
| U-2              | 2095870.31 | 1111603.79 | INSPECTION HOLE | 714.79        | SW 712.31<br>SE 712.31<br>NW 712.31 | 16.5             | 9.82% * |
| MH-4             | 2095859.38 | 1111588.86 | MANHOLE         | 712.70        | NE 710.53                           |                  |         |
| U-2              | 2095870.31 | 1111603.79 | INSPECTION HOLE | 714.79        | SW 712.31<br>SE 712.31<br>NW 712.31 | 107.7            | 0.50%   |
| U-3              | 2095957.22 | 1111540.16 | SLOPE BREAK     | 714.79        | NW 712.85<br>SE 712.85              | 107.7            | 0.50%   |
| U-4              | 2096044.13 | 1111476.52 | INSPECTION HOLE | 714.79        | NW 712.31<br>SW 712.31<br>SE 712.31 | 16.5             | 6.05% * |
| MH-6             | 2096033.20 | 1111461.59 | MANHOLE         | 713.36        | NE 711.19                           |                  |         |
| U-4              | 2096044.13 | 1111476.52 | INSPECTION HOLE | 714.79        | NW 712.31<br>SW 712.31<br>SE 712.31 | 176.0            | 0.50%   |
| U-5              | 2096145.21 | 1111362.09 | CLEANOUT        | 717.93        | NE 713.18                           |                  |         |
| U-6              | 2095789.39 | 1111725.65 | CLEANOUT        | 715.54        | SW 712.82                           | 47.2             | 0.50%   |
| U-7              | 2095767.77 | 1111750.97 | INSPECTION HOLE | 714.91        | N 712.41<br>E 712.41<br>W 712.41    | 16.9             | 9.59% * |
| EXISTING 6F      | 2095786.82 | 1111751.99 | MANHOLE         | 712.77        | S 710.60                            |                  |         |
| U-7              | 2095767.77 | 1111750.97 | INSPECTION HOLE | 714.91        | N 712.41<br>E 712.41<br>W 712.41    | 133.1            | 0.50%   |
| U-8              | 2095844.17 | 1111800.19 | CLEANOUT        | 715.64        | NE 713.04                           | 167.0            | 0.50%   |
| U-9              | 2096108.28 | 1111468.10 | CLEANOUT        | 715.41        | W 713.29                            | 11.0             | 3.63% * |
| U-10             | 2096212.54 | 1111567.01 | INSPECTION HOLE | 715.81        | SW 712.45<br>NE 712.45<br>SE 712.45 | 84.3             | 0.50%   |
| MH-11            | 2096201.65 | 1111574.99 | MANHOLE         | 714.13        | SW 711.96<br>NE 711.96              |                  |         |
| U-10             | 2096212.54 | 1111567.01 | INSPECTION HOLE | 715.80        | SW 712.45<br>NE 712.45<br>SE 712.45 | 60.3             | 0.50%   |
| U-11             | 2096262.32 | 1111635.00 | CLEANOUT        | 715.80        | SW 712.87                           | 67.0             | 0.70%   |
| U-12             | 2095836.04 | 1111868.70 | CLEANOUT        | 714.80        | NW 713.15                           | 67.0             | 0.70%   |
| U-13             | 2095885.13 | 1111826.33 | SLOPE BREAK     | -             | E 713.45<br>NW 713.45               | 67.0             | 0.70%   |
| MH-8             | 2095917.23 | 1111783.23 | MANHOLE         | 715.14        | SE 712.97<br>NW 712.97              | 67.0             | 0.70%   |
| U-14             | 2095974.06 | 1111746.58 | SLOPE BREAK     | -             | SE 713.45<br>NW 713.45              | 67.0             | 0.70%   |
| MH-9             | 2096026.16 | 1111703.47 | MANHOLE         | 715.14        | SE 712.97<br>NW 712.97              | 67.0             | 0.70%   |
| U-15             | 2096082.98 | 1111666.83 | SLOPE BREAK     | -             | SE 713.45<br>NW 713.45              | 67.0             | 0.70%   |
| MH-10            | 2096135.08 | 1111623.72 | MANHOLE         | 715.14        | SE 712.97<br>NW 712.97              | 68.5             | 0.70%   |
| U-16             | 2096193.12 | 1111586.19 | CLEANOUT        | 715.50        | SE 713.48                           |                  |         |

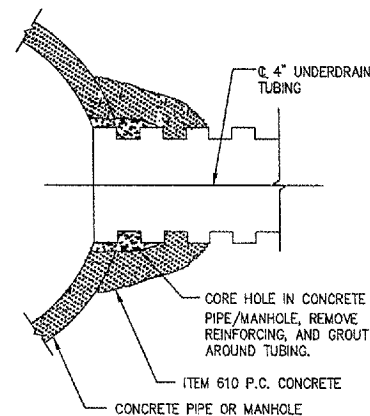
\* NONPERFORATED TUBING TO BE USED AT MANHOLE CONNECTIONS



**PERFORATED UNDERDRAIN UNDER PAVEMENT**



**NON-PERFORATED UNDERDRAIN**



**STORM SEWER/MANHOLE CONCRETE COLLAR AND GROUT CONNECTION**



HANSON PROFESSIONAL SERVICES INC.

815 Commerce Drive, Suite 200  
Oak Brook, Illinois 60523  
Telephone: 630.990.3800  
Fax: 630.990.3801



Waukegan Regional Airport  
Waukegan Regional Port District

3580 North McAree Road  
Waukegan, Illinois 60087  
Phone: 847.244.0055  
Fax: 847.244.3813

**REPAIR SELECTED PAVEMENT AREAS, REHABILITATE HANGAR TAXILANES AND SERVICE ROAD, AND CONSTRUCT NEW HANGAR PAVEMENTS**

A.I.P. PROJ.: 3-17-0105-B30  
IL. PROJ.: UGN-3449

| No. | Drawing Issue Description | Date | By |
|-----|---------------------------|------|----|
|     |                           |      |    |
|     |                           |      |    |
|     |                           |      |    |
|     |                           |      |    |
|     |                           |      |    |
|     |                           |      |    |
|     |                           |      |    |
|     |                           |      |    |
|     |                           |      |    |
|     |                           |      |    |
|     |                           |      |    |

Date: MAY 06, 2005  
Sheet Title

**STORM SEWER, UNDERDRAIN SCHEDULES AND DRAINAGE DETAILS**

831-04TXD  
Project Number  
AAP 02/28/05  
Layout By Date  
AAP 02/28/05  
Designed By Date  
TMM 05/05/05  
Reviewed By Date  
AAP  
Drawn By