

901 SEEDING NOTES

THE PROPOSED SEEDING SHALL BE ACCOMPLISHED IN ACCORDANCE WITH ITEM 901 "SEEDING" AS STATED ON PAGE 120 OF THE SUPPLEMENTAL SPECIFICATIONS AND RECURRING SPECIAL PROVISIONS, ADOPTED JULY 1, 2004. THE SEED MIX UTILIZED WILL BE DEPENDENT ON THE TIME OF THE YEAR THE SEED IS APPLIED. AT THE TIME OF THE CONSTRUCTION PLANS FALL SEEDING IS ANTICIPATED.

ALL DISTURBED AREAS LOCATED WITHIN THE BOUNDARY SHOWN AND LABELLED ON THE PLANS AS THE PROPOSED SEEDING LIMITS WILL BE SEEDING IN ACCORDANCE WITH THE ABOVE NOTED SPECIFICATION. ALL AREAS OUTSIDE THE DESIGNATED SEEDING LIMITS THAT ARE CURRENTLY TURF, AND ARE DISTURBED OVER THE COURSE OF THE PROJECT WILL ALSO BE SEEDING BUT AT THE CONTRACTOR'S OWN EXPENSE.

ALL MATERIALS AND/OR DEBRIS RESULTING FROM THE SEEDING OPERATIONS WILL BE REMOVED FROM THE PAVEMENTS AND MISCELLANEOUS STRUCTURES PRIOR TO OPENING THE RUNWAY.

901-3.4 MAINTENANCE OF SEEDING AREAS. DELETE THE SECOND PARAGRAPH OF THIS SECTION AND ADD THE FOLLOWING:

"THE CONTRACTOR WILL BE REQUIRED TO ESTABLISH A GOOD STAND OF GRASS OF UNIFORM COLOR AND DENSITY TO THE SATISFACTION OF THE RESIDENT ENGINEER. IF AT THE TIME WHEN THE CONTRACT HAS BEEN OTHERWISE COMPLETED, IT IS NOT POSSIBLE TO MAKE AN ADEQUATE DETERMINATION OF COLOR, DENSITY, AND UNIFORMITY OF SUCH STAND OF GRASS, THE ITEM OF WORK WILL BE REVIEWED AT A LATER DATE DETERMINED BY THE ILLINOIS DIVISION OF AERONAUTICS."

DATE SEEDING COMPLETED _____

THE PROPOSED SEEDING WILL BE PAID FOR UNDER ITEMS:
AR901510 SEEDING _____ 45 ACRES

908 MULCHING NOTES

THE PROPOSED MULCHING SHALL BE ACCOMPLISHED IN ACCORDANCE WITH ITEM 908 "MULCHING" AS STATED ON PAGE 127 OF THE SUPPLEMENTAL SPECIFICATIONS AND RECURRING SPECIAL PROVISIONS, ADOPTED JULY 1, 2004.

THIS ITEM SHALL CONSIST OF THE FURNISHING, TRANSPORTING, AND PLACING MULCH OVER THE SEEDING AREA. DISTURBED AREAS OUTSIDE THE SEEDING LIMITS SHALL ALSO BE MULCHED AND PARTICIPATION WILL BE THE SAME AS FOR SEEDING AREAS.

908-2.1 MULCH MATERIAL: THE CONTRACTOR WILL FURNISH HYDROMULCH AS THE TYPE OF MULCH MATERIAL TO BE USED ON THIS PROJECT.

908-3.4 STRUCTURE CLEANING: AFTER THE PROPOSED MULCH HAS BEEN APPLIED, THE CONTRACTOR WILL CLEAN THE MULCH OFF ALL STRUCTURES (DRAINAGE, ELECTRICAL, LIGHTS, ETC.).

DATE MULCHING COMPLETED _____

THE PROPOSED MULCHING WILL BE PAID FOR UNDER ITEMS:
AR908510 MULCHING _____ 45 ACRES

156 TEMPORARY SEEDING NOTES

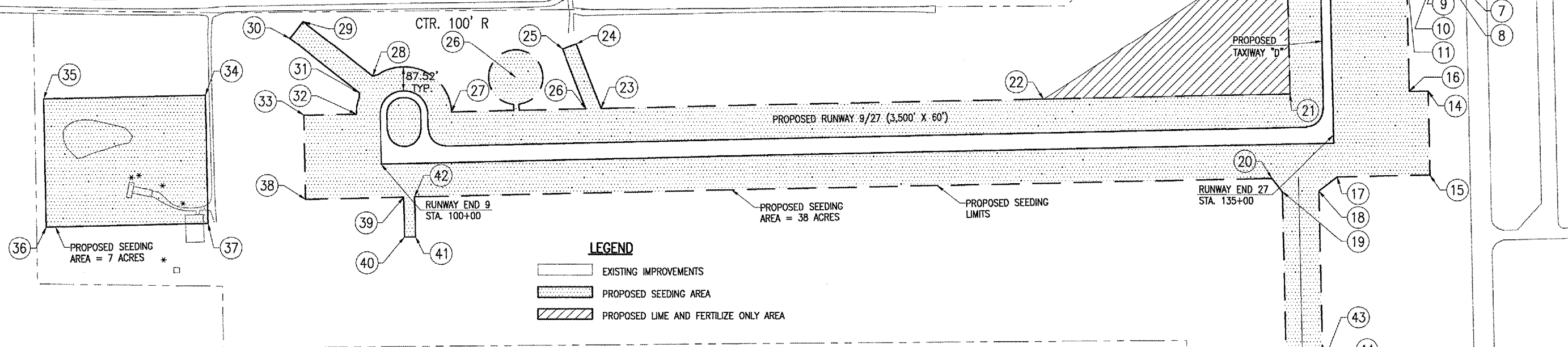
TEMPORARY SEEDING WILL BE COMPLETED AS NECESSARY TO MINIMIZE THE AMOUNT OF EXPOSED ERODABLE SURFACE AREA WITHIN THE PROJECT LIMITS. SEED SHALL CONSIST OF OATS FROM MARCH 1 TO JULY 31 AND WINTER WHEAT FROM AUGUST 1 TO NOVEMBER 15. SEED BED PREPARATION SHALL NOT BE REQUIRED IF THE SOIL IS IN A LOOSE CONDITION. LIGHT DISKING SHALL BE DONE IF THE SOIL IS HARD PACKED OR CAKED. FERTILIZER NUTRIENTS WILL NOT BE REQUIRED.

UNLESS OTHERWISE NOTED THE TEMPORARY SEED WILL BE APPLIED IN ACCORDANCE TO SUPPLEMENTAL AND RECURRING SPECIAL PROVISIONS DATED JULY 1, 2004.

A QUANTITY OF 23 ACRES WAS ESTABLISHED FOR BID HOWEVER MORE OR LESS MAY BE NECESSARY OVER THE COURSE OF THE PROJECT.

THE PROPOSED TEMPORARY SEEDING WILL BE PAID FOR UNDER ITEM:
AR156530 TEMPORARY SEEDING _____ 23 ACRES

BASE BID SEEDING QUANTITIES			
ITEM NO.	DESCRIPTION	UNIT	QUANTITY
AR156530	TEMPORARY SEEDING	AC.	23
AR800578	LIME AND FERTILIZE	AC.	6
AR901510	SEEDING	AC.	45
AR908510	MULCHING	AC.	45



AR800578 - LIME AND FERTILIZE NOTES

ALL DISTURBED AREAS LOCATED WITHIN THE BOUNDARY SHOWN AND LABELLED ON THE DRAWING AS THE PROPOSED LIME AND FERTILIZE ONLY LIMIT WILL BE LIMED AND FERTILIZED IN ACCORDANCE WITH THESE NOTES AND THE SPECIAL PROVISION FOR AR901510 - SEEDING. ALL AREAS OUTSIDE THE DESIGNATED SEEDING LIMITS AND THE LIME AND FERTILIZE LIMITS, THAT ARE EXISTING AREAS USED FOR AGRICULTURAL PURPOSES, AND ARE DISTURBED OVER THE COURSE OF THE PROJECT WILL ALSO BE LIMED AND FERTILIZED BUT AT THE CONTRACTOR'S OWN EXPENSE.

THE PROPOSED LIME WILL BE ACCOMPLISHED BY INCORPORATING AGRICULTURAL LIME INTO THE SOIL AT A RATE OF 2 TON/ACRE.

THE PROPOSED FERTILIZING WILL BE ACCOMPLISHED BY INCORPORATING A FERTILIZER CONTAINING THE FOLLOWING INTO THE SOIL:

TOTAL NITROGEN: 18%
AVAILABLE PHOSPHORIC ACID: 24%
WATER-SOLUBLE POTASH: 6%

THE ABOVE WILL BE APPLIED AT A RATE OF 420 LBS/ACRE AND WILL BE REQUIRED TO BE INCORPORATED TO A MINIMUM DEPTH OF 3 INCHES.

THE COST OF ALL MATERIALS, LABOR, AND EQUIPMENT NECESSARY TO COMPLETE THIS TASK WILL BE CONSIDERED INCIDENTAL TO ITEM AR800578 - LIME AND FERTILIZE AND NO ADDITIONAL COMPENSATION WILL BE ALLOWED.

DATE LIME COMPLETED _____

DATE FERTILIZER COMPLETED _____

THE PROPOSED LIME AND FERTILIZER WILL BE PAID FOR UNDER ITEMS:
AR800578 LIME AND FERTILIZE _____ 6 ACRES

SEEDING AREA LOCATIONS								
POINT	STATION	OFFSET	POINT	STATION	OFFSET	POINT	STATION	OFFSET
1	19+21 (TX)	140' LT.	19	133+07 (RWY)	203' RT.	37	93+60 (RWY)	235' RT.
2	18+54 (TX)	140' LT.	20	132+71 (RWY)	154' RT.	38	97+20 (RWY)	153' RT.
3	18+54 (TX)	212' LT.	21	133+43 (RWY)	153' LT.	39	100+80 (RWY)	153' RT.
4	18+13 (TX)	212' LT.	22	124+37 (RWY)	153' LT.	40	100+80 (RWY)	300' RT.
5	18+13 (TX)	140' LT.	23	108+11 (RWY)	153' LT.	41	101+20 (RWY)	300' RT.
6	19+20 (TX)	100' RT.	24	107+25 (RWY)	392' LT.	42	101+20 (RWY)	153' RT.
7	18+54 (TX)	100' RT.	25	106+75 (RWY)	374' LT.	43	364+50 (DTCH)	75' RT.
8	18+54 (TX)	138' RT.	26	107+55 (RWY)	153' LT.	44	364+50 (DTCH)	100' RT.
9	18+14 (TX)	138' RT.	27	102+62 (RWY)	153' LT.	45	362+50 (DTCH)	100' RT.
10	18+14 (TX)	100' RT.	28	99+75 (RWY)	292' LT.	46	362+50 (DTCH)	55' RT.
11	17+03 (TX)	100' RT.	29	97+25 (RWY)	498' LT.	47	358+22 (DTCH)	60' LT.
12	14+67 (TX)	140' LT.	30	96+75 (RWY)	437' LT.	48	357+95 (DTCH)	55' RT.
13	14+10 (TX)	198' LT.	31	99+25 (RWY)	231' LT.	49	353+50 (DTCH)	60' LT.
14	138+52 (RWY)	153' LT.	32	99+13 (RWY)	153' LT.	50	353+04 (DTCH)	5' LT.
15	138+52 (RWY)	153' RT.	33	97+20 (RWY)	153' LT.	51	353+04 (DTCH)	5' RT.
16	137+83 (RWY)	153' LT.	34	93+60 (RWY)	235' LT.	52	353+50 (DTCH)	55' RT.
17	135+10 (RWY)	153' RT.	35	87+65 (RWY)	235' LT.	53	105+00 (RWY)	275' LT.
18	134+42 (RWY)	203' RT.	36	87+65 (RWY)	235' RT.			

MAY 05, 2005 3:15 PM RAW I:\AIRPORTS\TAYLORVILLE\828-03RWY\GDO_AIRPORT_SHEETS\R-1925TK.DWG - SEEDING LIMITS

TA001

DATE	REVISION	BY

TAYLORVILLE MUNICIPAL AIRPORT
TAYLORVILLE, ILLINOIS
A.I.P. PROJ.: 3-17-0100-B7
IL. PROJ.: TAZ-3166

ILL. Project No. 828-03RWY\GDO_0800 Drawing: R-1925TK.DWG Scale: 1" = 200' Date: 02/05/04	LAYOUT DRAWN REVIEWED	BAK 02/05/04 BAK 02/05/04 CAH 03/28/05
--	-----------------------------	--

HANSON
Hanson Professional Services Inc.
1525 South Sixth Street
Springfield, Illinois 62703-2886
Offices Nationwide

CONSTRUCT
RUNWAY 9-27
PROPOSED
SEEDING
PLAN