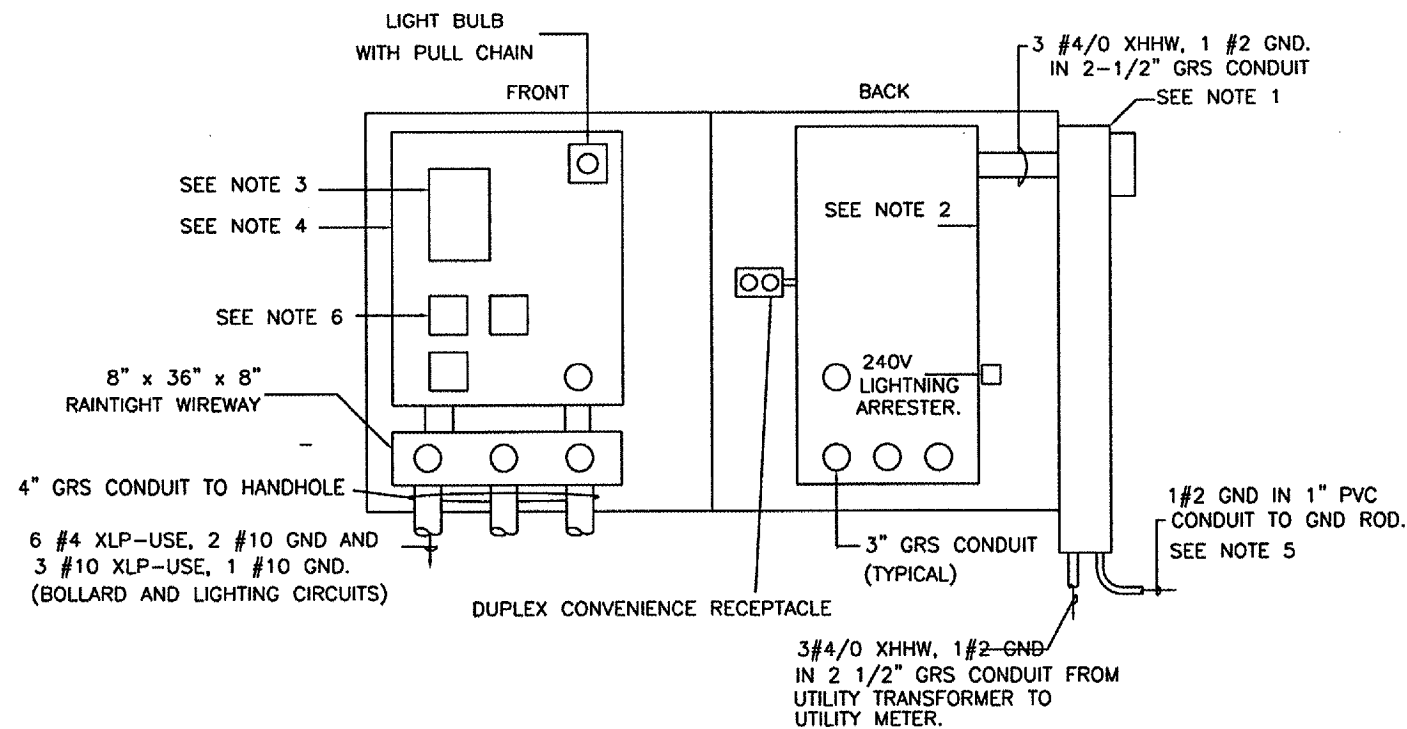


LIGHTING PANEL SCHEDULE			
CIRCUIT NO.	POLE NO.	CIRCUIT BREAKER SIZE	USAGE
A-1	1,3	200A	MAIN CIRCUIT BREAKER
A-2	2,4	30A	PARKING LOT LIGHTING CKT. 1
A-3	5,7	30A	PARKING LOT LIGHTING CKT. 2
A-4	8	15A	NIGHT LIGHT (NL)
A-5	9	15A	LIGHT INSIDE CABINET
A-6	10,12	30A	TIMECLOCK
			BOLLARD LIGHTS

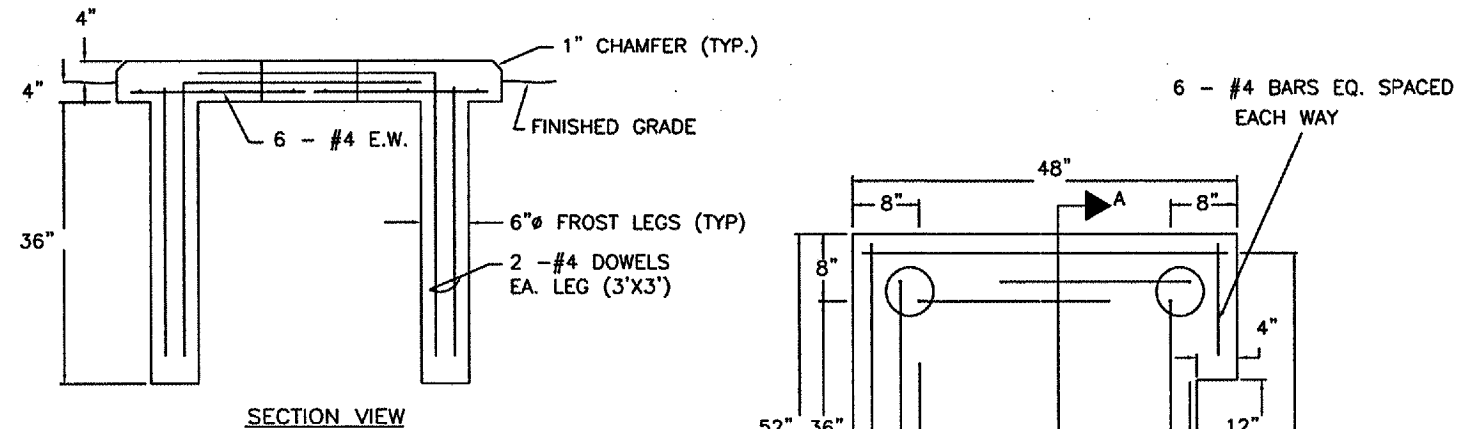
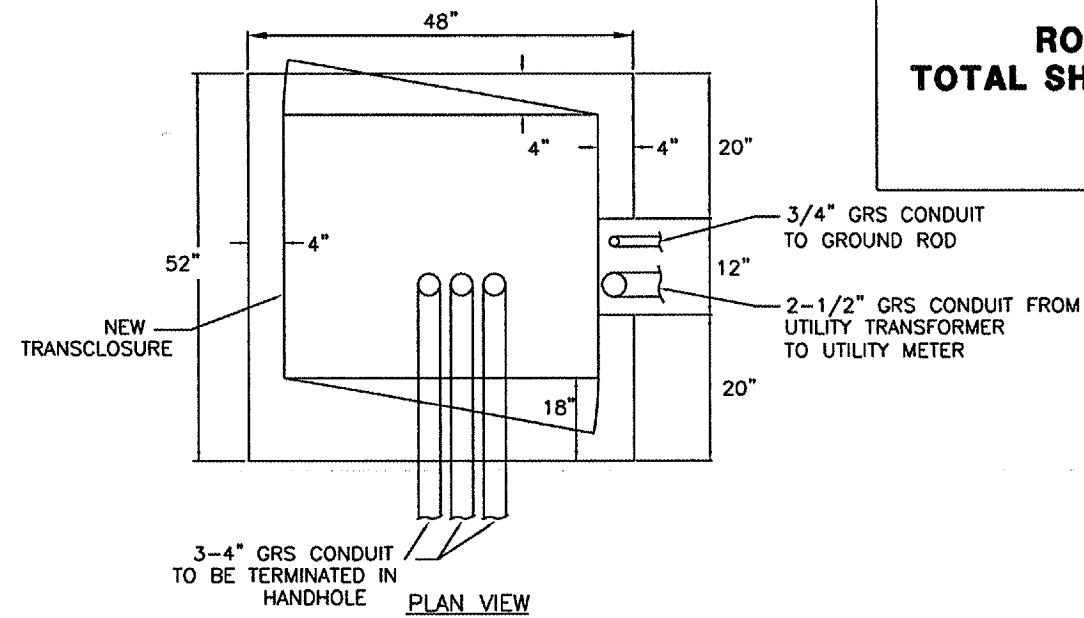
**NOTES**

- UTILITY METER. THE NEW ELECTRIC SERVICE SHALL BE 200 AMP, 120/240 VOLT, 1 PHASE, 3-WIRE 60 HZ SERVICE. UTILITY METER SHALL BE INSTALLED ON THE SIDE OF TRANSCLOSURE. CONTRACTOR SHALL SUPPLY THE BASE FOR METER AND COORDINATE SERVICE CONNECTION WITH UTILITY COMPANY.
- 20 CIRCUIT LIGHTING PANEL WITH 200 AMP 2-POLE MAIN CIRCUIT BREAKER.
- 8 CIRCUIT PROGRAMMABLE TIMECLOCK, MODEL NO. ET70815CR AS MANUFACTURED BY INTERMATIC OR EQUAL.
- 36" x 36" x 8" JUNCTION BOX HOUSING FOR TIMECLOCK AND CONTACTORS.
- GROUND ROD SHALL BE 3/4" DIA. x 10'-0" COPPER CLAD. ALL CONNECTIONS TO GROUND ROD SHALL BE ONE-SHOT EXOTHERMIC TYPE.
- 30A, 2-POLE LIGHTING CONTACTOR. (TYP. OF 4)

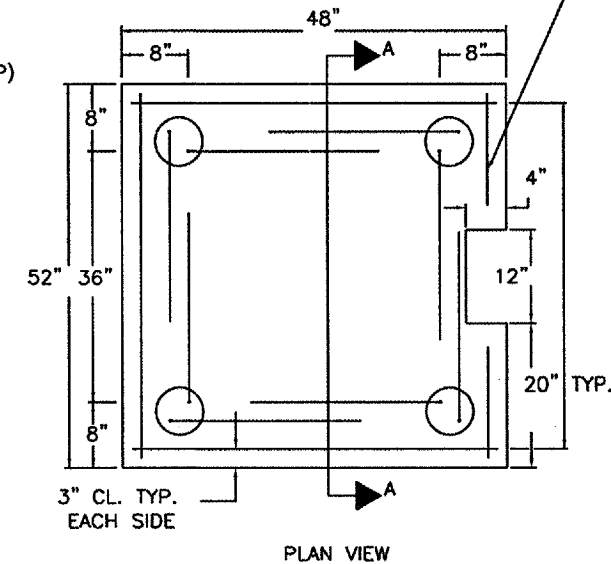


**ELECTRICAL TRANSCLOSURE DETAIL**

NOT TO SCALE



**SECTION VIEW**



- CONCRETE SHALL HAVE A COMPRESSIVE STRENGTH AT 14 DAYS OF 3500 PSI
- REINFORCING STEEL SHALL BE A-615 GRADE 60
- ALL EXPOSED EDGES AND EQUIPMENT PADS SHALL BE CHAMFERED 1"
- CONTRACTOR SHALL INSTALL CONDUITS THROUGH PAD AS REQUIRED. CONDUITS NOT SHOWN FOR CLARITY.
- DIMENSIONS ARE APPROXIMATE AND SHALL BE FIELD VERIFIED.

**CONCRETE PAD FOR ELECTRICAL TRANSCLOSURE**

NOT TO SCALE

**RO010**  
**TOTAL SHEETS = 24**



**REVISIONS**

NUMBER	BY	DATE

0 1  
THIS BAR IS EQUAL TO 1"  
AT FULL SCALE (17 X 11).

**GREATER ROCKFORD AIRPORT AUTHORITY**  
**ROCKFORD, ILLINOIS**  
**ILLINOIS PROJECT: RFD-2820**  
**NORTH AND WEST AUTO PARKING**  
**ELECTRICAL DETAILS - 3**

**CMT**  
CRAWFORD, MURPHY & TILLY, INC.  
CONSULTING ENGINEERS

Northwest  
ChicagoLand  
International  
Airport



DESIGN BY:	AB
DRAWN BY:	CMT
CHECKED BY:	AB
APPROVED BY:	
DATE:	5.13.2005
JOB No:	05258-04-00

**15 (ED3)**