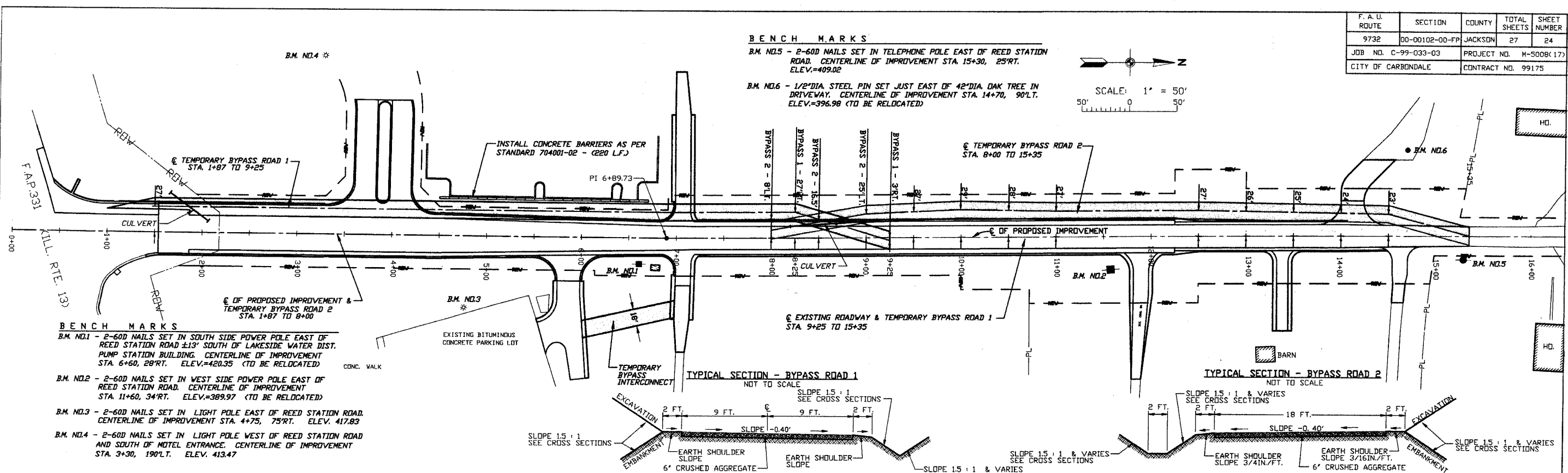
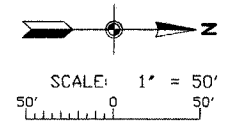


F. A. U. ROUTE	SECTION	COUNTY	TOTAL SHEETS	SHEET NUMBER
9732	00-00102-00-FP	JACKSON	27	24
JOB NO. C-99-033-03	PROJECT NO. M-5008(17)			
CITY OF CARBONDALE	CONTRACT NO. 99175			

BENCH MARKS

B.M. NO.5 - 2-60D NAILS SET IN TELEPHONE POLE EAST OF REED STATION ROAD. CENTERLINE OF IMPROVEMENT STA. 15+30, 25'RT. ELEV.=409.02

B.M. NO.6 - 1/2" DIA. STEEL PIN SET JUST EAST OF 42" DIA. OAK TREE IN DRIVEWAY. CENTERLINE OF IMPROVEMENT STA. 14+70, 90'L.T. ELEV.=396.98 (TO BE RELOCATED)



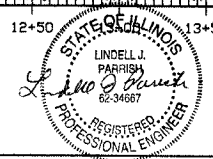
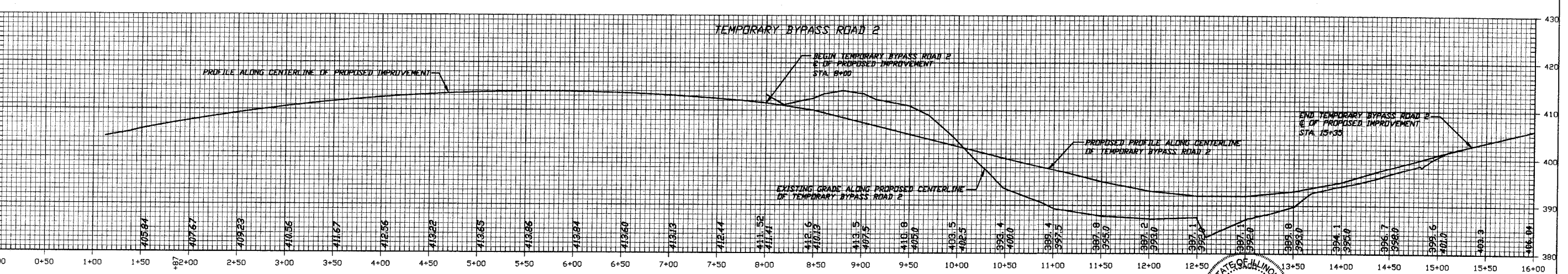
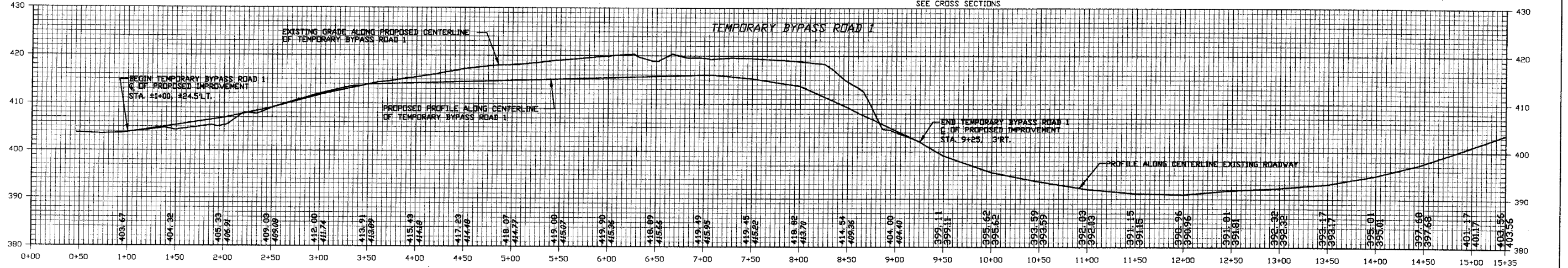
BENCH MARKS

B.M. NO.1 - 2-60D NAILS SET IN SOUTH SIDE POWER POLE EAST OF REED STATION ROAD ±13' SOUTH OF LAKESIDE WATER DIST. PUMP STATION BUILDING. CENTERLINE OF IMPROVEMENT STA. 6+60, 28'RT. ELEV.=420.35 (TO BE RELOCATED)

B.M. NO.2 - 2-60D NAILS SET IN WEST SIDE POWER POLE EAST OF REED STATION ROAD. CENTERLINE OF IMPROVEMENT STA. 11+60, 34'RT. ELEV.=389.97 (TO BE RELOCATED)

B.M. NO.3 - 2-60D NAILS SET IN LIGHT POLE EAST OF REED STATION ROAD. CENTERLINE OF IMPROVEMENT STA. 4+75, 75'RT. ELEV. 417.83

B.M. NO.4 - 2-60D NAILS SET IN LIGHT POLE WEST OF REED STATION ROAD AND SOUTH OF HOTEL ENTRANCE. CENTERLINE OF IMPROVEMENT STA. 3+30, 190'L.T. ELEV. 413.47



CIP NO. ST0107 - REED STATION ROAD NORTH
 PLAN AND PROFILE - TEMPORARY BYPASS ROADS
 STA. 1+00 TO STA. 15+50