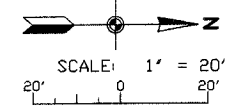
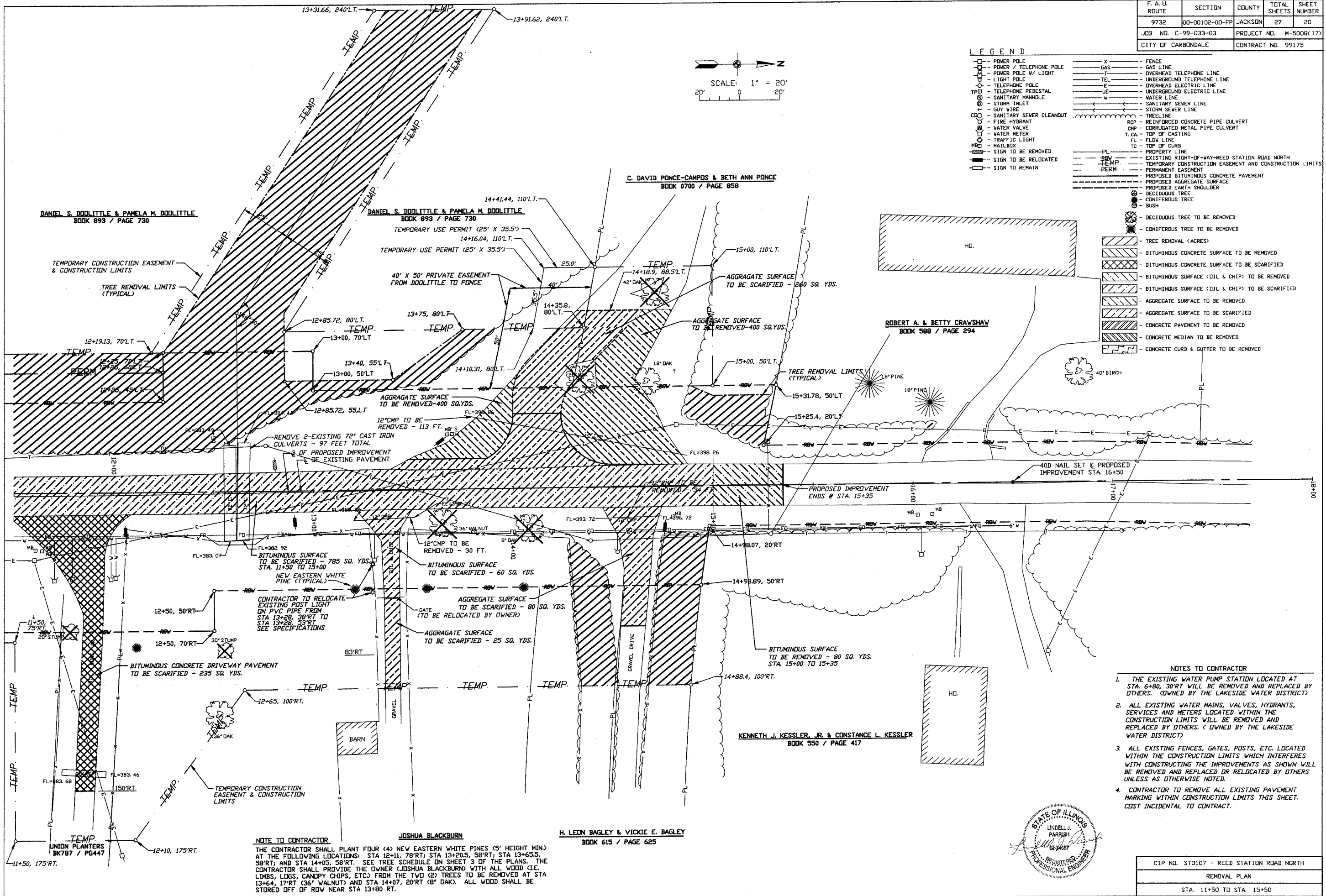


F. A. U. ROUTE	SECTION	COUNTY	TOTAL SHEETS	SHEET NUMBER
9732	00-00102-00-FP	JACKSON	27	20
JOB NO. C-99-033-03	PROJECT NO. M-5008(17)			
CITY OF CARBONDALE		CONTRACT NO. 99175		



**LEGEND**

- |                                                                   |                                 |                                    |
|-------------------------------------------------------------------|---------------------------------|------------------------------------|
| — POWER POLE                                                      | — FENCE                         | — X — GAS LINE                     |
| — POWER / TELEPHONE POLE                                          | — T — OVERHEAD TELEPHONE LINE   | — TEL — UNDERGROUND TELEPHONE LINE |
| — POWER POLE W/ LIGHT                                             | — E — OVERHEAD ELECTRIC LINE    | — UE — UNDERGROUND ELECTRIC LINE   |
| — LIGHT POLE                                                      | — W — WATER LINE                | — SM — SANITARY SEWER LINE         |
| — TELEPHONE POLE                                                  | — S — SANITARY MANHOLE          | — SCL — SANITARY SEWER CLEANOUT    |
| — TELEPHONE PEDESTAL                                              | — SI — STORM INLET              | — GUY WIRE                         |
| — WATER LINE                                                      | — SCL — SANITARY SEWER CLEANOUT | — F — FIRE HYDRANT                 |
| — SANITARY SEWER LINE                                             | — SI — STORM INLET              | — W — WATER VALVE                  |
| — STORM SEWER LINE                                                | — SCL — SANITARY SEWER CLEANOUT | — WM — WATER METER                 |
| — TREE LINE                                                       | — SI — STORM INLET              | — TL — TRAFFIC LIGHT               |
| — REINFORCED CONCRETE PIPE CULVERT                                | — SCL — SANITARY SEWER CLEANOUT | — MB — MAIL BOX                    |
| — CORRUGATED METAL PIPE CULVERT                                   | — SI — STORM INLET              | — S — SIGN TO BE REMOVED           |
| — TOP OF CASTING                                                  | — SCL — SANITARY SEWER CLEANOUT | — R — SIGN TO BE RELOCATED         |
| — FLOW LINE                                                       | — SI — STORM INLET              | — S — SIGN TO REMAIN               |
| — TOP OF CURB                                                     | — SCL — SANITARY SEWER CLEANOUT |                                    |
| — PROPERTY LINE                                                   | — SI — STORM INLET              |                                    |
| — EXISTING RIGHT-OF-WAY-REED STATION ROAD NORTH                   | — SCL — SANITARY SEWER CLEANOUT |                                    |
| — TEMP. — TEMPORARY CONSTRUCTION EASEMENT AND CONSTRUCTION LIMITS | — SCL — SANITARY SEWER CLEANOUT |                                    |
| — PERM. — PERMANENT EASEMENT                                      | — SCL — SANITARY SEWER CLEANOUT |                                    |
| — PROPOSED BITUMINOUS CONCRETE PAVEMENT                           | — SCL — SANITARY SEWER CLEANOUT |                                    |
| — PROPOSED AGGREGATE SURFACE                                      | — SCL — SANITARY SEWER CLEANOUT |                                    |
| — PROPOSED EARTH SHOULDER                                         | — SCL — SANITARY SEWER CLEANOUT |                                    |
| — DECIDUOUS TREE                                                  | — SCL — SANITARY SEWER CLEANOUT |                                    |
| — CONIFEROUS TREE                                                 | — SCL — SANITARY SEWER CLEANOUT |                                    |
| — BUSH                                                            | — SCL — SANITARY SEWER CLEANOUT |                                    |
| — DECIDUOUS TREE TO BE REMOVED                                    | — SCL — SANITARY SEWER CLEANOUT |                                    |
| — CONIFEROUS TREE TO BE REMOVED                                   | — SCL — SANITARY SEWER CLEANOUT |                                    |
| — TREE REMOVAL (ACRES)                                            | — SCL — SANITARY SEWER CLEANOUT |                                    |
| — BITUMINOUS CONCRETE SURFACE TO BE REMOVED                       | — SCL — SANITARY SEWER CLEANOUT |                                    |
| — BITUMINOUS CONCRETE SURFACE TO BE SCARIFIED                     | — SCL — SANITARY SEWER CLEANOUT |                                    |
| — BITUMINOUS SURFACE (OIL & CHIP) TO BE REMOVED                   | — SCL — SANITARY SEWER CLEANOUT |                                    |
| — BITUMINOUS SURFACE (OIL & CHIP) TO BE SCARIFIED                 | — SCL — SANITARY SEWER CLEANOUT |                                    |
| — AGGREGATE SURFACE TO BE REMOVED                                 | — SCL — SANITARY SEWER CLEANOUT |                                    |
| — AGGREGATE SURFACE TO BE SCARIFIED                               | — SCL — SANITARY SEWER CLEANOUT |                                    |
| — CONCRETE PAVEMENT TO BE REMOVED                                 | — SCL — SANITARY SEWER CLEANOUT |                                    |
| — CONCRETE MEDIAN TO BE REMOVED                                   | — SCL — SANITARY SEWER CLEANOUT |                                    |
| — CONCRETE CURB & GUTTER TO BE REMOVED                            | — SCL — SANITARY SEWER CLEANOUT |                                    |



- NOTES TO CONTRACTOR**
1. THE EXISTING WATER PUMP STATION LOCATED AT STA. 6+80, 30'RT WILL BE REMOVED AND REPLACED BY OTHERS. (OWNED BY THE LAKESIDE WATER DISTRICT)
  2. ALL EXISTING WATER MAINS, VALVES, HYDRANTS, SERVICES AND METERS LOCATED WITHIN THE CONSTRUCTION LIMITS WILL BE REMOVED AND REPLACED BY OTHERS. (OWNED BY THE LAKESIDE WATER DISTRICT)
  3. ALL EXISTING FENCES, GATES, POSTS, ETC. LOCATED WITHIN THE CONSTRUCTION LIMITS WHICH INTERFERES WITH CONSTRUCTING THE IMPROVEMENTS AS SHOWN WILL BE REMOVED AND REPLACED OR RELOCATED BY OTHERS UNLESS AS OTHERWISE NOTED.
  4. CONTRACTOR TO REMOVE ALL EXISTING PAVEMENT MARKING WITHIN CONSTRUCTION LIMITS THIS SHEET. COST INCIDENTAL TO CONTRACT.

**NOTE TO CONTRACTOR**

THE CONTRACTOR SHALL PLANT FOUR (4) NEW EASTERN WHITE PINES (5' HEIGHT MIN.) AT THE FOLLOWING LOCATIONS: STA 12+11, 78'RT; STA 13+20.5, 58'RT; STA 13+65.5, 58'RT; AND STA 14+05, 58'RT. SEE TREE SCHEDULE ON SHEET 3 OF THE PLANS. THE CONTRACTOR SHALL PROVIDE THE OWNER (JOSHUA BLACKBURN) WITH ALL WOOD (I.E. LIMBS, LOGS, CANNOPY CHIPS, ETC.) FROM THE TWO (2) TREES TO BE REMOVED AT STA 13+64, 17'RT (36' WALNUT) AND STA 14+07, 20'RT (8' OAK). ALL WOOD SHALL BE STORED OFF OF ROW NEAR STA 13+80 RT.



CIP NO. ST0107 - REED STATION ROAD NORTH
REMOVAL PLAN
STA. 11+50 TO STA. 15+50