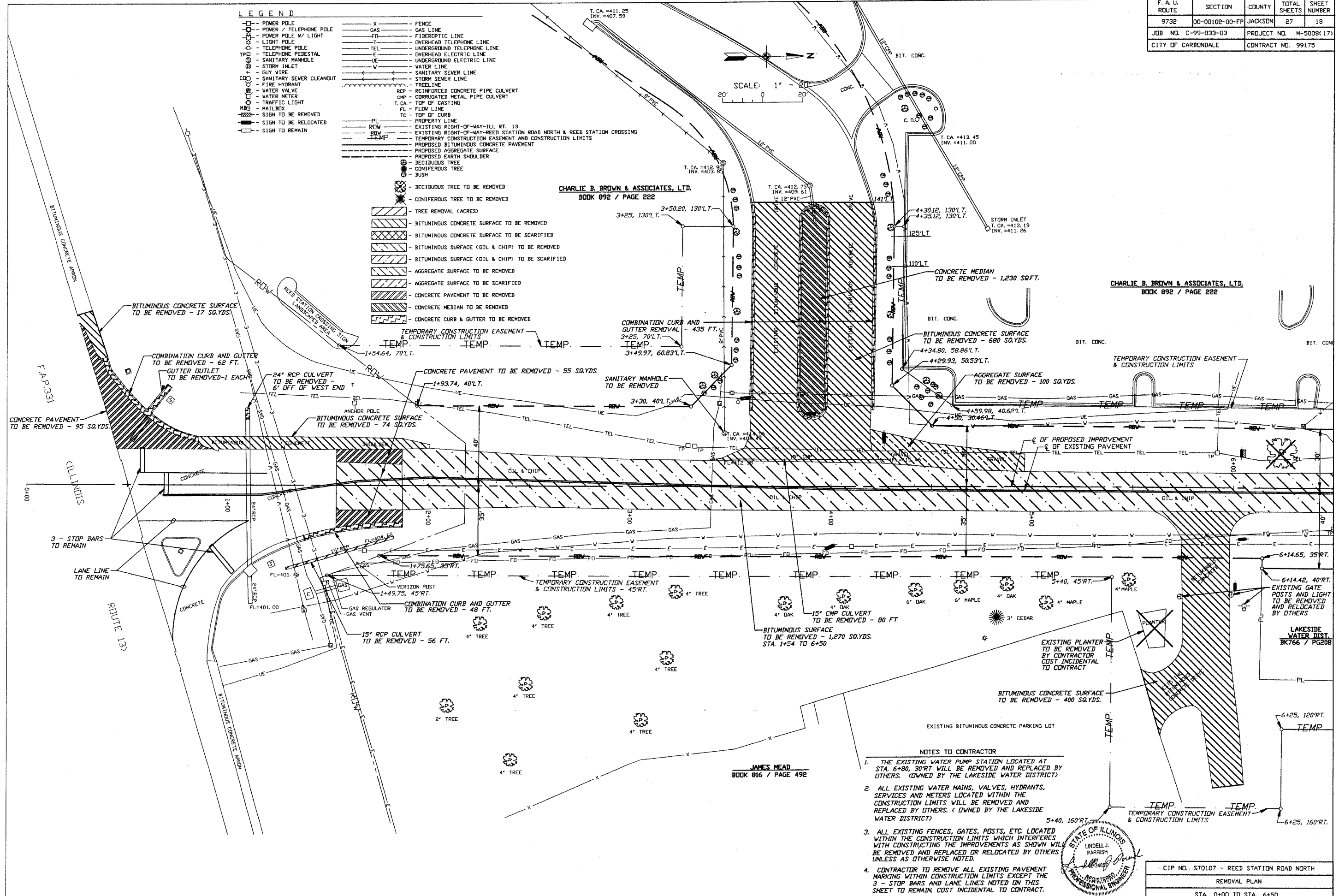
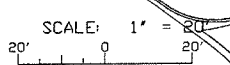


F. A. U. ROUTE	SECTION	COUNTY	TOTAL SHEETS	SHEET NUMBER
9732	00-00102-00-FP	JACKSON	27	18
JOB NO. C-99-033-03	PROJECT NO. M-5008(17)			
CITY OF CARBONDALE	CONTRACT NO. 99175			

- LEGEND**
- POWER POLE
 - POWER / TELEPHONE POLE
 - POWER POLE W/ LIGHT
 - LIGHT POLE
 - TELEPHONE POLE
 - TELEPHONE PEDESTAL
 - SANITARY MANHOLE
 - STORM INLET
 - GUY WIRE
 - SANITARY SEWER CLEANOUT
 - FIRE HYDRANT
 - WATER VALVE
 - WATER METER
 - TRAFFIC LIGHT
 - MAILBOX
 - SIGN TO BE REMOVED
 - SIGN TO BE RELOCATED
 - SIGN TO REMAIN
- FENCE
 - GAS
 - FIBEROPTIC LINE
 - OVERHEAD TELEPHONE LINE
 - UNDERGROUND TELEPHONE LINE
 - OVERHEAD ELECTRIC LINE
 - UNDERGROUND ELECTRIC LINE
 - WATER LINE
 - SANITARY SEWER LINE
 - STORM SEWER LINE
 - TREE LINE
 - RCP - REINFORCED CONCRETE PIPE CULVERT
 - CMP - CORRUGATED METAL PIPE CULVERT
 - T. CA. - TOP OF CASTING
 - F.L. - FLOW LINE
 - FL - TOP OF CURB
 - TC - TOP OF CURB
 - PL - PROPERTY LINE
 - ROW - EXISTING RIGHT-OF-WAY-ILL RT. 13
 - ROW - EXISTING RIGHT-OF-WAY-REED STATION ROAD NORTH & REED STATION CROSSING
 - TEMP. - TEMPORARY CONSTRUCTION EASEMENT AND CONSTRUCTION LIMITS
 - TEMP. - PROPOSED BITUMINOUS CONCRETE PAVEMENT
 - TEMP. - PROPOSED AGGREGATE SURFACE
 - TEMP. - PROPOSED EARTH SHOULDER
 - DECIDUOUS TREE
 - CONIFERUS TREE
 - BUSH
 - DECIDUOUS TREE TO BE REMOVED
 - CONIFERUS TREE TO BE REMOVED
 - TREE REMOVAL (ACRES)
 - ▨ BITUMINOUS CONCRETE SURFACE TO BE REMOVED
 - ▨ BITUMINOUS CONCRETE SURFACE TO BE SCARIFIED
 - ▨ BITUMINOUS SURFACE (OIL & CHIP) TO BE REMOVED
 - ▨ BITUMINOUS SURFACE (OIL & CHIP) TO BE SCARIFIED
 - ▨ AGGREGATE SURFACE TO BE REMOVED
 - ▨ AGGREGATE SURFACE TO BE SCARIFIED
 - ▨ CONCRETE PAVEMENT TO BE REMOVED
 - ▨ CONCRETE MEDIAN TO BE REMOVED
 - ▨ CONCRETE CURB & GUTTER TO BE REMOVED

CHARLIE B. BROWN & ASSOCIATES, LTD.
BOOK 892 / PAGE 222

CHARLIE B. BROWN & ASSOCIATES, LTD.
BOOK 892 / PAGE 222



- NOTES TO CONTRACTOR**
- THE EXISTING WATER PUMP STATION LOCATED AT STA. 6+80, 30'RT WILL BE REMOVED AND REPLACED BY OTHERS. (OWNED BY THE LAKESIDE WATER DISTRICT)
 - ALL EXISTING WATER MAINS, VALVES, HYDRANTS, SERVICES AND METERS LOCATED WITHIN THE CONSTRUCTION LIMITS WILL BE REMOVED AND REPLACED BY OTHERS. (OWNED BY THE LAKESIDE WATER DISTRICT)
 - ALL EXISTING FENCES, GATES, POSTS, ETC. LOCATED WITHIN THE CONSTRUCTION LIMITS WHICH INTERFERES WITH CONSTRUCTING THE IMPROVEMENTS AS SHOWN WILL BE REMOVED AND REPLACED OR RELOCATED BY OTHERS UNLESS AS OTHERWISE NOTED.
 - CONTRACTOR TO REMOVE ALL EXISTING PAVEMENT MARKING WITHIN CONSTRUCTION LIMITS EXCEPT THE 3 - STOP BARS AND LANE LINES NOTED ON THIS SHEET TO REMAIN. COST INCIDENTAL TO CONTRACT.



CIP NO. ST0107 - REED STATION ROAD NORTH
REMOVAL PLAN
STA. 0+00 TO STA. 6+50

JAMES MEAD
BOOK 816 / PAGE 492