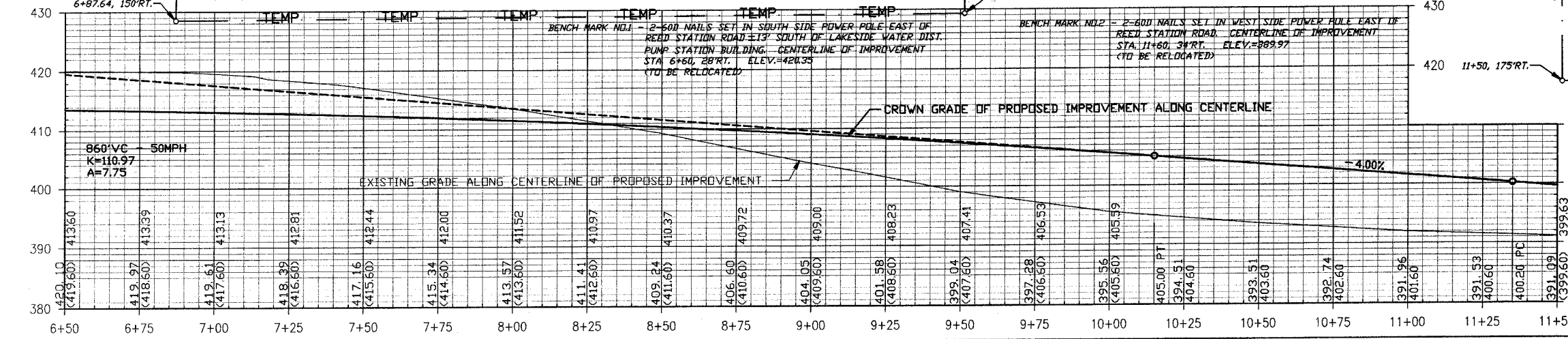
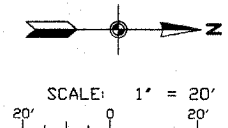
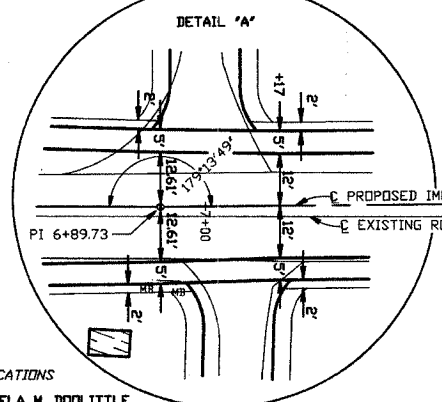
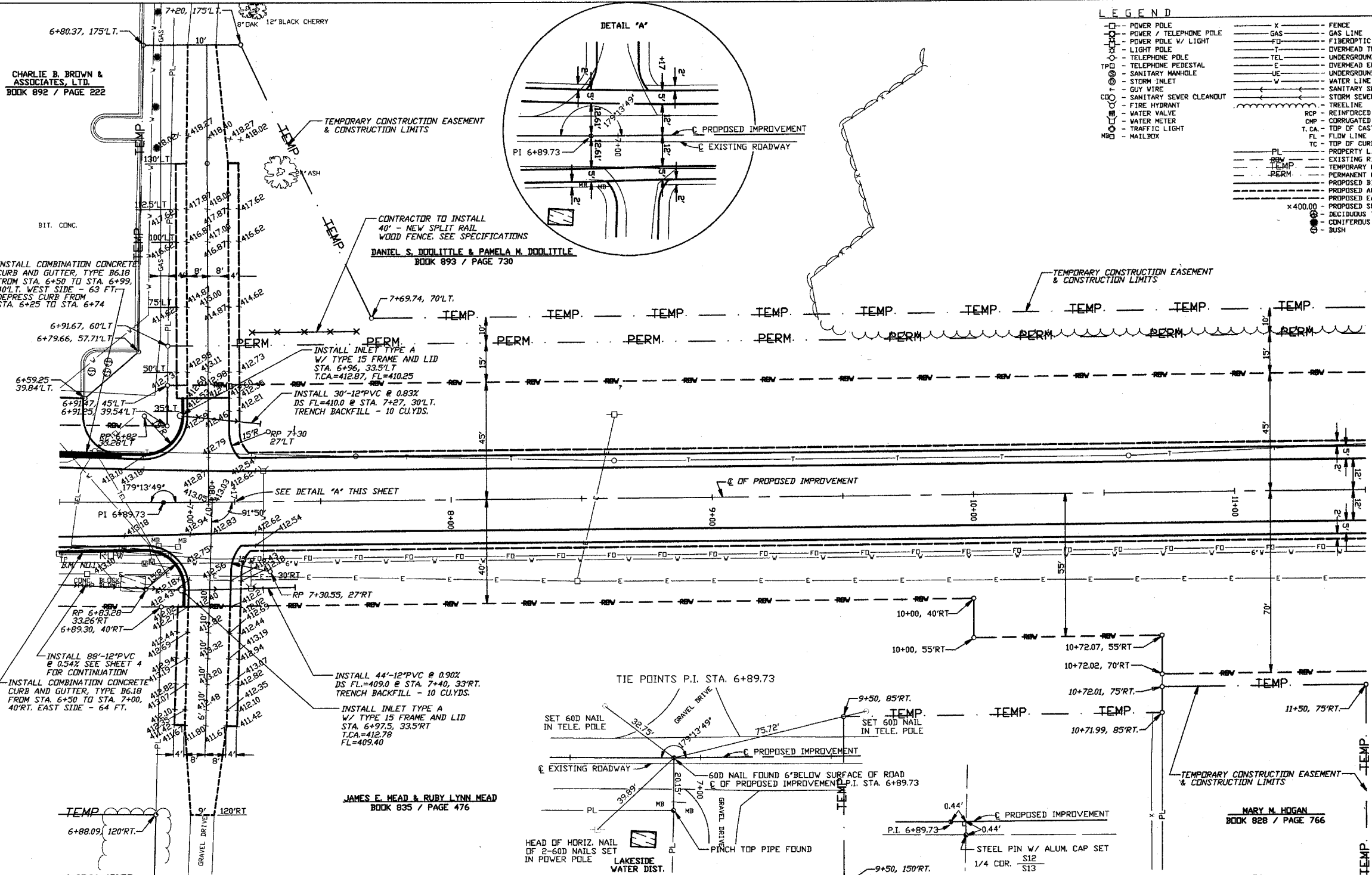


F. A. U. ROUTE	SECTION	COUNTY	TOTAL SHEETS	SHEET NUMBER
9732	00-00102-00-FP	JACKSON	27	6
JOB NO. C-99-033-03	PROJECT NO. M-5008(17)			
CITY OF CARBONDALE		CONTRACT NO. 99175		

- LEGEND**
- POWER POLE
 - POWER / TELEPHONE POLE
 - POWER POLE W/ LIGHT
 - LIGHT POLE
 - TELEPHONE POLE
 - TELEPHONE PEDESTAL
 - SANITARY MANHOLE
 - STORM INLET
 - GUY WIRE
 - SANITARY SEWER CLEANOUT
 - FIRE HYDRANT
 - WATER VALVE
 - WATER METER
 - TRAFFIC LIGHT
 - MAILBOX
 - FENCE
 - GAS LINE
 - FIBEROPTIC LINE
 - OVERHEAD TELEPHONE LINE
 - UNDERGROUND TELEPHONE LINE
 - OVERHEAD ELECTRIC LINE
 - UNDERGROUND ELECTRIC LINE
 - WATER LINE
 - SANITARY SEWER LINE
 - STORM SEWER LINE
 - TREE LINE
 - RCP - REINFORCED CONCRETE PIPE CULVERT
 - CMP - CORRUGATED METAL PIPE CULVERT
 - T. CA. - TOP OF CASTING
 - FL - FLOW LINE
 - TC - TOP OF CURB
 - PL - PROPERTY LINE
 - EXISTING RIGHT-OF-WAY-REED STATION ROAD NORTH & REED STATION CROSSING
 - TEMP. - TEMPORARY CONSTRUCTION EASEMENT AND CONSTRUCTION LIMITS
 - PERM. - PERMANENT CONSTRUCTION EASEMENT
 - PROPOSED BITUMINOUS CONCRETE PAVEMENT
 - PROPOSED AGGREGATE SURFACE
 - PROPOSED EARTH SHOULDER
 - PROPOSED SPOT ELEVATION
 - x400.00 - DECIDUOUS TREE
 - - CONIFEROUS TREE
 - - BUSH



CHARLIE B. BROWN & ASSOCIATES, LTD.
BOOK 892 / PAGE 222

CONTRACTOR TO INSTALL
40' - NEW SPLIT RAIL
WOOD FENCE. SEE SPECIFICATIONS
DANIEL S. DOOLITTLE & PAMELA M. DOOLITTLE
BOOK 893 / PAGE 730

JAMES F. HEAD & RUBY LYNN HEAD
BOOK 835 / PAGE 476

MARY M. HOGAN
BOOK 828 / PAGE 766

