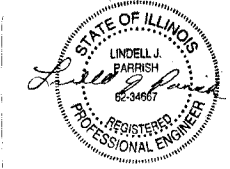


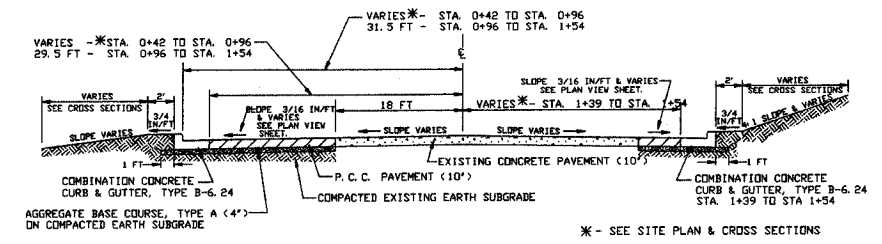
F. A. U. ROUTE	SECTION	COUNTY	TOTAL SHEETS	SHEET NUMBER
973E	DO-0010E-00-FF JACKSON	JACKSON	27	2
JOB NO. C-99-033-33		PROJECT NO. M-5008(17)		
CITY OF CARBONDALE		CONTRACT NO. 99175		

SUMMARY OF QUANTITIES

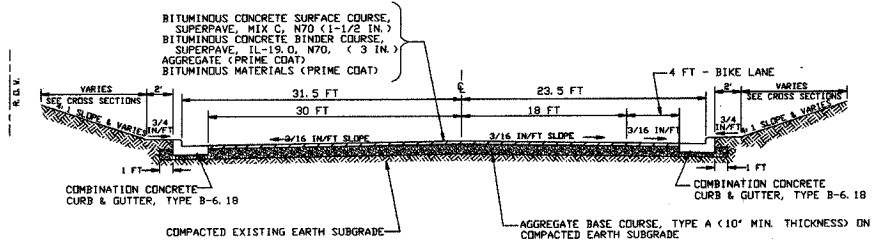
CODE NUMBER	DESCRIPTION	UNIT	AS-BID QUANTITY	AS-BUILT QUANTITY
20100110	TREE REMOVAL (6 TO 15 UNITS DIAMETER)	UNIT	8	
20100210	TREE REMOVAL (OVER 15 UNITS DIAMETER)	UNIT	274	
20100500	TREE REMOVAL, ACRES	ACRE	1.1	
20200410	EARTH EXCAVATION (SPECIAL)	CU YD	13,700	
20400800	FURNISHED EXCAVATION	CU YD	1,925	
20800150	TRENCH BACKFILL	CU YD	550	
XY006212	LAWN SEEDING (SPECIAL)	ACRE	4	
28000250	TEMPORARY EROSION CONTROL SEEDING	POUND	900	
28000300	TEMPORARY DITCH CHECKS	EACH	17	
28000400	PERIMETER EROSION BARRIER	FOOT	1518	
28000500	INLET AND PIPE PROTECTION	EACH	5	
28000700	MULCH, METHOD 1	ACRE	4	
28100805	STONE DUMPED RIPRAP, CLASS A3	TON	60	
35100100	AGGREGATE BASE COURSE, TYPE A	TON	5,200	
40600100	BITUMINOUS MATERIALS (PRIME COAT)	GALLON	2,500	
40600300	AGGREGATE (PRIME COAT)	TON	25	
42000500	PORTLAND CEMENT CONCRETE PAVEMENT 10'	SQ YD	225	
42001300	PROTECTIVE COAT	SQ YD	710	
44000100	PAVEMENT REMOVAL	SQ YD	150	
44000500	COMBINATION CURB AND GUTTER REMOVAL	FOOT	545	
44002500	GUTTER OUTLET REMOVAL	EACH	1	
44003100	MEDIAN REMOVAL	SQ FT	1,230	
54200427	PIPE CULVERTS, TYPE 1 RCCP 12"	FOOT	127	
54200439	PIPE CULVERTS, TYPE 1 RCCP 24"	FOOT	24	
54201327	PIPE CULVERTS, TYPE 2 RCCP 72"	FOOT	160	
54213657	PRECAST REINFORCED CONCRETE FLARED END SECTIONS 12"	EACH	6	
54213669	PRECAST REINFORCED CONCRETE FLARED END SECTIONS 24"	EACH	1	
54213717	PRECAST REINFORCED CONCRETE FLARED END SECTIONS 72"	EACH	4	
54247230	GRATING FOR CONCRETE FLARED END SECTION 72"	EACH	4	
55019600	STORM SEWERS, TYPE 1, REINFORCED CONCRETE CULVERT, STORM DRAIN, AND SEWER PIPE, CLASS IV 15"	FOOT	329	
60228110	MANHOLES, SANITARY, 4'-DIAMETER, TYPE 1 FRAME, CLOSED LID	EACH	3	
60237000	INLETS, TYPE A, TYPE 15 FRAME AND LID	EACH	5	
60243300	INLETS, SPECIAL, TYPE 3, 5'	EACH	4	
60255500	MANHOLES TO BE ADJUSTED	EACH	1	
60500040	REMOVING MANHOLES	EACH	1	
60603400	GUTTER OUTLET (SPECIAL)	EACH	1	
60603800	COMBINATION CONCRETE CURB AND GUTTER, TYPE B-6.12	FOOT	415	
60604400	COMBINATION CONCRETE CURB AND GUTTER, TYPE B-6.18	FOOT	1,082	
60605000	COMBINATION CONCRETE CURB AND GUTTER, TYPE 6.24	FOOT	132	
60623711	CONCRETE MEDIAN	SQ FT	1,230	
63000000	STEEL PLATE BEAM GUARDRAIL, TYPE A	FOOT	142	
63100045	TRAFFIC BARRIER TERMINAL, TYPE 2	EACH	2	
70101700	TRAFFIC CONTROL AND PROTECTION	L SUM	1	
70300100	SHORT-TERM PAVEMENT MARKING	FOOT	3,000	
70400100	TEMPORARY CONCRETE BARRIER	FOOT	220	
72000100	SIGN PANEL - TYPE 1	SQ FT	27	
78000100	THERMOPLASTIC PAVEMENT MARKING - LETTERS AND SYMBOLS	SQ FT	230	
7800200	THERMOPLASTIC PAVEMENT MARKING - LINE 4"	FOOT	6,452	
78000600	THERMOPLASTIC PAVEMENT MARKING - LINE 12"	FOOT	243	
7800650	THERMOPLASTIC PAVEMENT MARKING - LINE 24"	FOOT	80	
88600100	DETECTOR LOOP, TYPE 1	FOOT	241	
88600500	DETECTOR LOOP REMOVAL	FOOT	241	
20013798	CONSTRUCTION LAYOUT	L SUM	1	
20056900	SANITARY SEWER 8"	FOOT	180	
D2002960	EVERGREEN, PINUS STROBUS (EASTERN WHITE PINE), 5' HEIGHT, BALLED AND BURLAPPED	EACH	16	
XX000503	SPLIT RAIL FENCE	FOOT	40	
XX006213	METAL POST, SPECIAL	EACH	6	
XX001616	TREE TO BE RELOCATED	EACH	12	
XX006214	LAMP POST TO BE RELOCATED	EACH	1	
XX004568	TEMPORARY ACCESS ROAD	L SUM	1	
X0323381	STORM SEWERS, (WATER MAIN REQUIREMENTS) TYPE 1 12"	FOOT	258	
X4066416	BITUMINOUS CONCRETE SURFACE COURSE, SUPERPAVE, MIX C, N70	TON	650	
X4066616	BITUMINOUS CONCRETE BINDER COURSE, SUPERPAVE, IL-19.0, N70	TON	1,250	



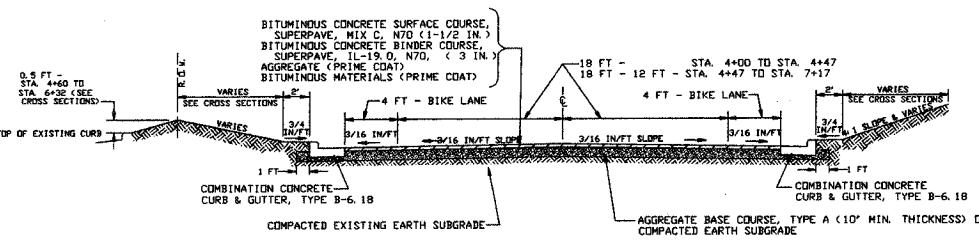
CIP NO. ST0107 - REED STATION ROAD NORTH
TYPICAL SECTIONS, SUMMARY OF QUANTITIES
STRUCTURAL DESIGN DATA AND TRAFFIC CONTROL PLAN



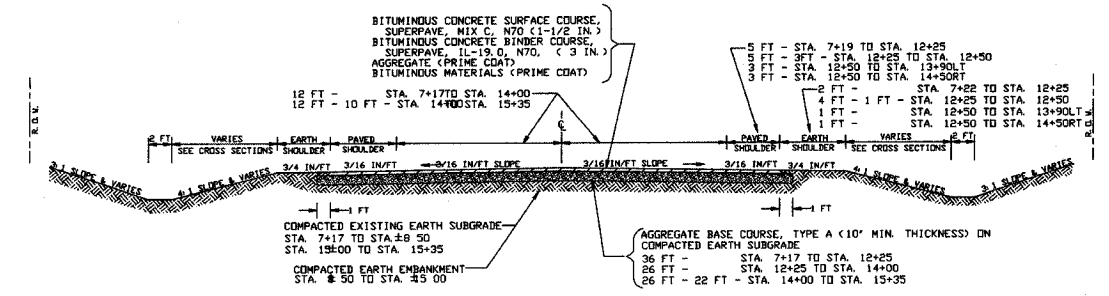
PROPOSED TYPICAL SECTION - STA. 0+40 TO 1+54
NOT TO SCALE



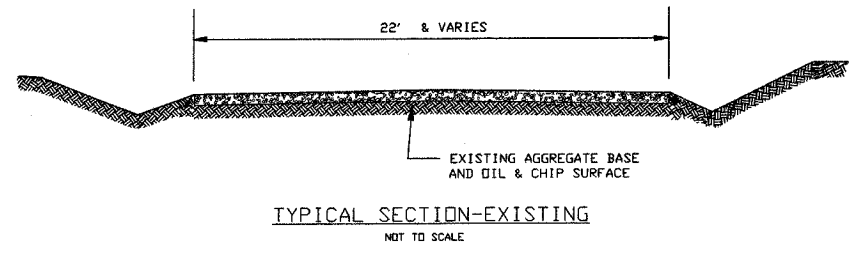
PROPOSED TYPICAL SECTION - STA. 1+54 TO 4+00
NOT TO SCALE



PROPOSED TYPICAL SECTION - STA. 4+00 TO 7+17
NOT TO SCALE

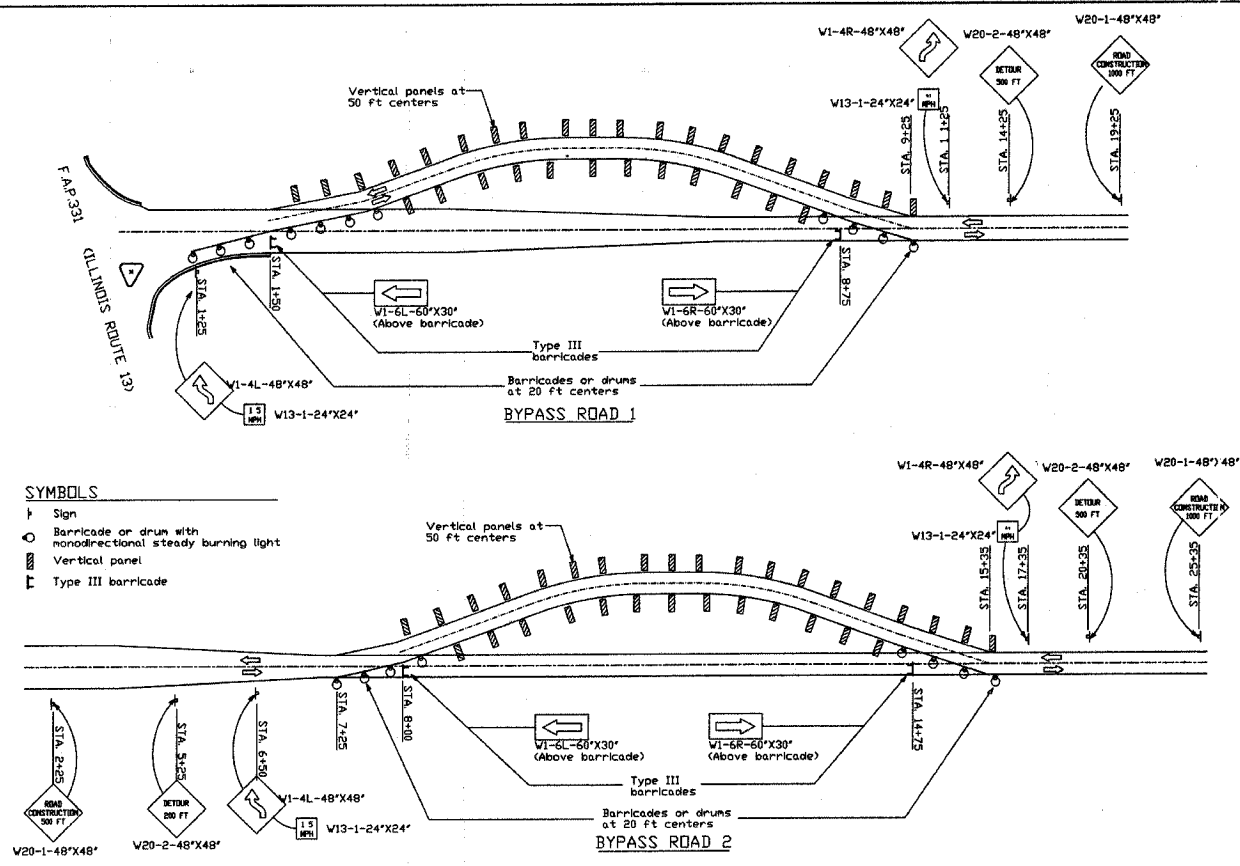


PROPOSED TYPICAL SECTION - STA. 7+17 TO 15+35
NOT TO SCALE

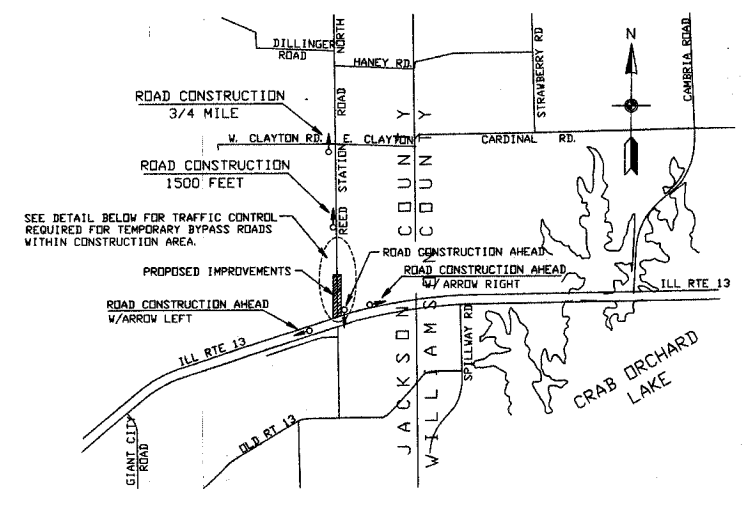


TYPICAL SECTION-EXISTING
NOT TO SCALE

- SYMBOLS**
- Sign
 - Barricade or drum with nondirectional steady burning light
 - Vertical panel
 - Type III barricade



BYPASS ROADS - TRAFFIC CONTROL PLAN



NOTE: ALL SIGNS, BARRICADES & DRUMS SHALL BE EQUIPPED WITH FLASHING YELLOW LIGHTS. SEE SPECIFICATIONS FOR TYPES, SIZES & LOCATION OF SIGNS AND BARRICADES.

TRAFFIC CONTROL PLAN
1" = 3000'

STRUCTURAL DESIGN DATA

DESIGN PERIOD = 20 YEARS
STRUCTURAL DESIGN TRAFFIC: YEAR 2025
PV = 10,345 SU = 95 MU = 40
ROAD/STREET CLASSIFICATION: CLASS II
PERCENT OF STRUCTURAL DESIGN TRAFFIC IN DESIGN LANE:
P = 50 S = 50 M = 50
TRAFFIC FACTOR = TF = 0.2248
MINIMUM SOIL SUPPORT: IBR = 5.2
MATERIAL COEFFICIENTS:
AGGREGATE BASE COURSE, TYPE A-0.13
BITUMINOUS CONCRETE BINDER COURSE - 0.33
BITUMINOUS CONCRETE SURFACE COURSE - 0.40