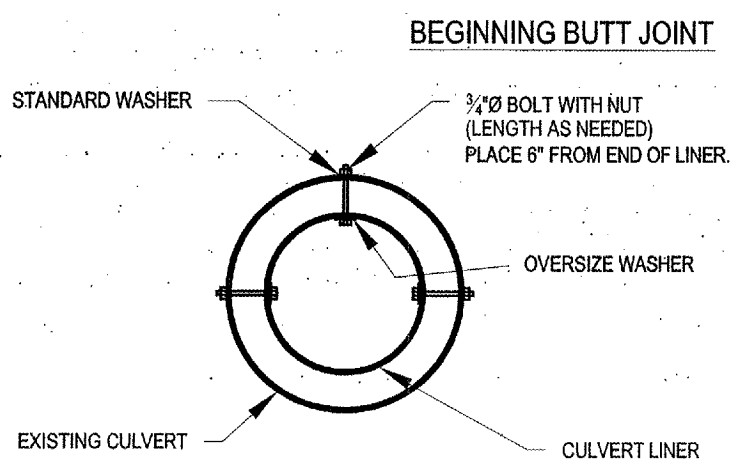


COLD MILL EXISTING APRON AS NECESSARY.
(INCIDENTAL TO BIT. CONC. SURF. CSE.)

NOTE: EXIST. SURFACE TO BE PRIMED WITH
BIT. MAT'LS (PR. CT.) @ 0.10 GAL/S.Y.
& AGGREGATE (PR. CT.) @ 3 LBS./S.Y.

BIT. CONC. BINDER CSE., SUP., IL-19.0, N70



NOTE: PLACE BOLTS PRIOR TO
GROUTING AROUND LINER.

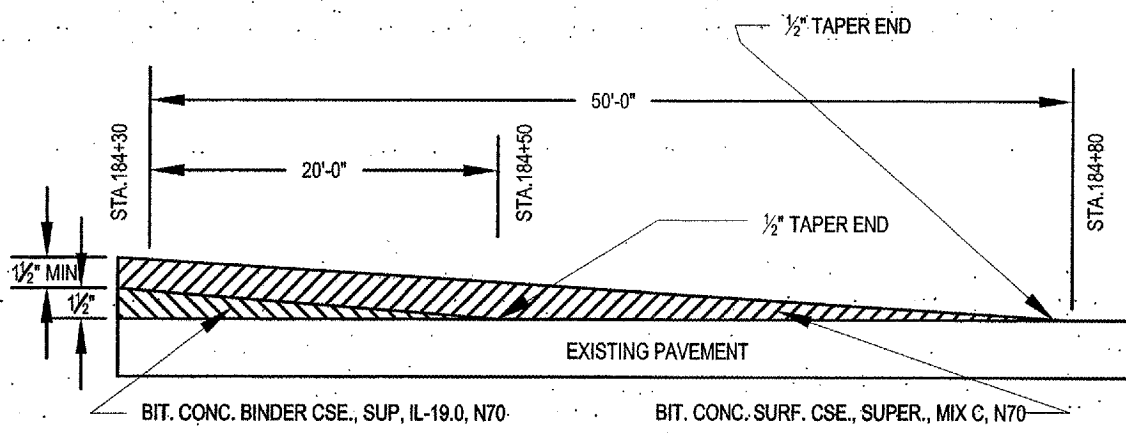
CULVERT LINER CENTERING DETAIL
(INCIDENTAL TO "INSERTION CULVERTLINER")

SOUTH BOUND LANE		NORTH BOUND LANE	
LOCATION BY STATION	LENGTH	LOCATION BY STATION	LENGTH
0+00 TO 7+00	700'	0+00 TO 7+00	700'
13+00 TO 23+00	1,000'	12+00 TO 32+50'	2,050'
31+50 TO 55+00	2,350'	42+00 TO 64+00'	2,200'
68+00 TO 108+00	4,000'	77+00 TO 145+00'	6,800'
112+50 TO 123+00	1,050'	154+00 TO 184+80'	3,080'
127+00 TO 138+00	1,100'		
144+50 TO 174+00	2,950'		
TOTALS	13,150'		14,830'

1 - DENOTES LOCATION OF "NO PASSING ZONE" SIGNS TO BE ERECTED IN ACCORDANCE WITH SIGN SCHEDULE & MOUNTING DETAIL. EACH LOCATION WILL HAVE ONE SIGN OF 5.55 SQ. FT. AND TWO POSTS WITH A COMBINED LENGTH OF 32.0 FT.

LOCATION	CENTERLINE (YELLOW DASHED)	EDGE LINE (WHITE SOLID)	NO PASSING (YELLOW SOLID)	SPECIAL PAVEMENT MARKINGS
STA. 0+00 TO STA. 184+80	8,080'	36,960'	27,980'	300'

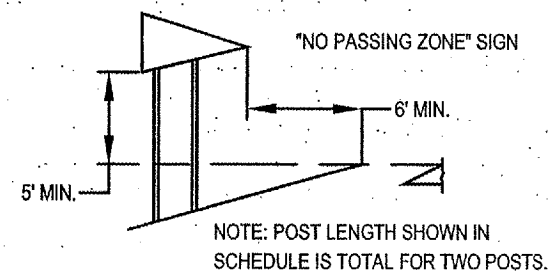
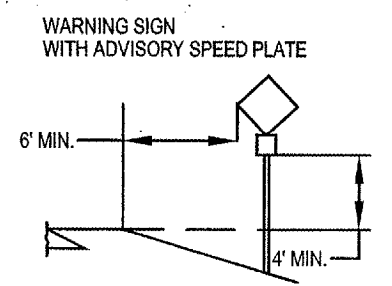
SEE SCHEDULE BELOW FOR LIMITS OF "NO PASSING ZONES".
SEE STANDARD 780001 FOR TYPICAL PAVEMENT MARKINGS.



NOTE: EXIST. SURFACE SHALL BE PRIMED WITH
BIT. MAT'LS (PR. CT.) @ 0.10 GAL/S.Y.
& AGGREGATE (PR. CT.) @ 3 LBS./S.Y.

ENDING TAPER

ROUTE	SECTION	COUNTY	TOTAL SHEETS	SHEET NO.
FAS 929	01-00056-00-RS	JOHNSON	27	13
PROJECT NO. SR-929(119)		CONTRACT NO. 99164		



LOCATION	NAME	SIGNS	POST
		NO. SQ. FT.	LENGTH
1+00 LT	STOP	R1-1 6.25	15.0
1+00 RT	TWLT	3-9B 6.0	15.0
1+50 RT	SPEED LIM	R2-1(30) 5.0	15.0
2+85 LT	STOP AHD	W3-1A 9.0	16.5
5+00 RT	MERGE	W4-1 6.25	16.0
7+00 LT	TWLT	R3-9B 6.0	15.0
10+00 LT	SPEED LIM	R2-1(30) 5.0	15.0
12+00 LT	SPZNAHD	R2-5C 5.0	16.5
	SPEED TG	W13-1(30) 2.25	-
49+00 RT	TURN	W1-1L 6.25	16.5
	AV SPEED	W13-1(30) 2.25	-
58+00 LT	TURN	W1-1L 6.25	16.5
	AV SPEED	W13-1(30) 2.25	-
85+00 RT	REV CURVE	W1-4 L&R 6.25	16.5
	AV SPEED	W13-1(40) 2.25	-
110+00 LT	REV CURVE	W1-4 R&L 6.25	16.5
	AV SPEED	W13-1(40) 2.25	-
117+00 RT	CURVE	W1-2L 6.25	16.5
	AV SPEED	W13-1(40) 2.25	-
125+00 LT	CURVE	W1-2R 6.25	16.5
	AV SPEED	W13-1(40) 2.25	-
134+00 RT	CURVE	W1-2L 6.25	16.5
	AV SPEED	W13-1(40) 2.25	-
140+00 LT	CURVE	W1-2R 6.25	16.5
	AV SPEED	W13-1(40) 2.25	-
154+00 RT	REV CURVE	W1-4 L&R 6.25	16.5
	AV SPEED	W13-1(40) 2.25	-
171+00 LT	REV CURVE	W1-4 R&L 6.25	16.5
	AV SPEED	W13-1(40) 2.25	-
VARIOUS	(12) NO PASS	W14-3 66.6	384.0
TOTAL		202.35	673.0

*SEE SCHEDULE OF "NO PASSING ZONES" FOR SIGN LOCATIONS. QUANTITIES SHOWN ARE TOTALS FOR ALL "NO PASSING ZONE" SIGNS REQUIRED.

SIGN SCHEDULE & MOUNTING DETAIL

SIGNATURE
11/30/05
LIC. EXP. DATE

SHAWNEE SURVEY & CONSULTING, INC
PHONE: (618) 658-8085 FAX: (618) 658-9190
P.O. BOX 125
104 S. FOURTH STREET
VIENNA, IL 62995

PLSF NO.: 04B-000151 PDF NO.: 104-02344

JOHNSON COUNTY HIGHWAY DEPARTMENT
P.O. BOX 247
VIENNA, IL 62995

OLD METROPOLIS ROAD RESURFACING PROJECT
FAS ROUTE 929, CH5
SECTION 01-00056-00-RS

FUNDING OR PROJECT NUMBER

DRAWING INFORMATION

DRAWN BY: P. RUZICH ■ PRELIMINARY

CHECKED BY: KDM ■ CONSTRUCTION

SCALE: 1" = 10'

JOB NO.: 2001-134 ■ FINAL / RECORD

DRAWING REVISIONS

REV.	DATE	REVISIONS
1	01/23/06	
2	08/12/06	
3	12/13/06	
3	1/14/06	

SHEET NUMBER
13
MISCELLANEOUS DETAILS