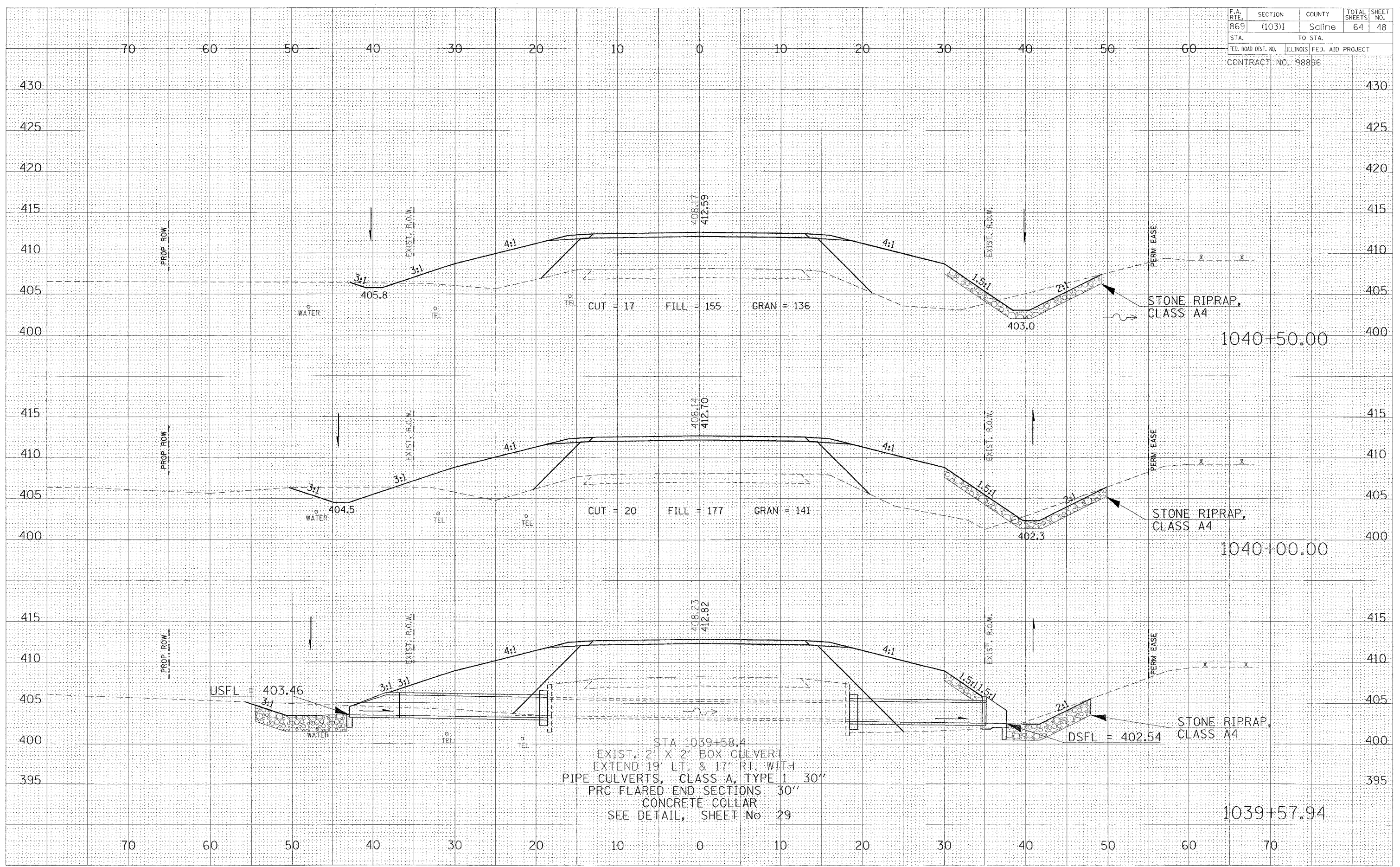


F.A. RTE.	SECTION	COUNTY	TOTAL SHEETS	SHEET NO.
869	(103)I	Saline	64	48
STA.	TO STA.			
FED. ROAD DIST. NO.	ILLINOIS	FED. AID PROJECT		
CONTRACT NO. 98896				

FINAL SURVEY	CONVERTED
NOTE BOOK	PLOTTED
AREAS	TEMPLATE
DESIGNED	AREAS
BY	DATE

ORIGINAL SURVEY	CONVERTED
NOTE BOOK	PLOTTED
AREAS	TEMPLATE
DESIGNED	AREAS
BY	DATE

Friday January 21, 2005



STA 1039+58.4  
 EXIST. 2' X 2' BOX CULVERT  
 EXTEND 19' LT. & 17' RT. WITH  
 PIPE CULVERTS, CLASS A, TYPE 1 30"  
 PRC FLARED END SECTIONS 30"  
 CONCRETE COLLAR  
 SEE DETAIL, SHEET No 29