

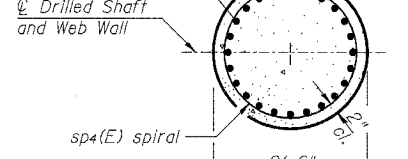
STATE OF ILLINOIS
DEPARTMENT OF TRANSPORTATION

ROUTE NO.	SECTION	COUNTY	TOTAL SHEETS	SHEET NO.
F.A.P. 322	*	UNION	39	36
FED. ROAD DIST. NO. 7		ILLINOIS	FED. AID PROJECT	

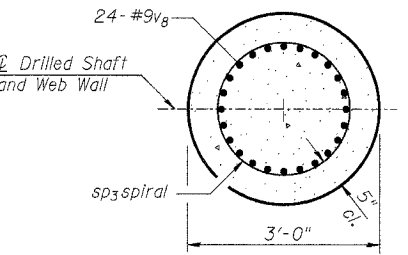
SHEET NO. 19
22 SHEETS

*(11-IVB)-1 CONTRACT NO. 98488

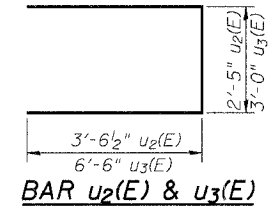
24-#9v₉(E)



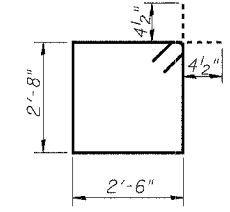
SECTION A-A



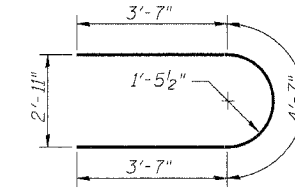
SECTION B-B



BAR u₂(E) & u₃(E)



BAR s₂(E)



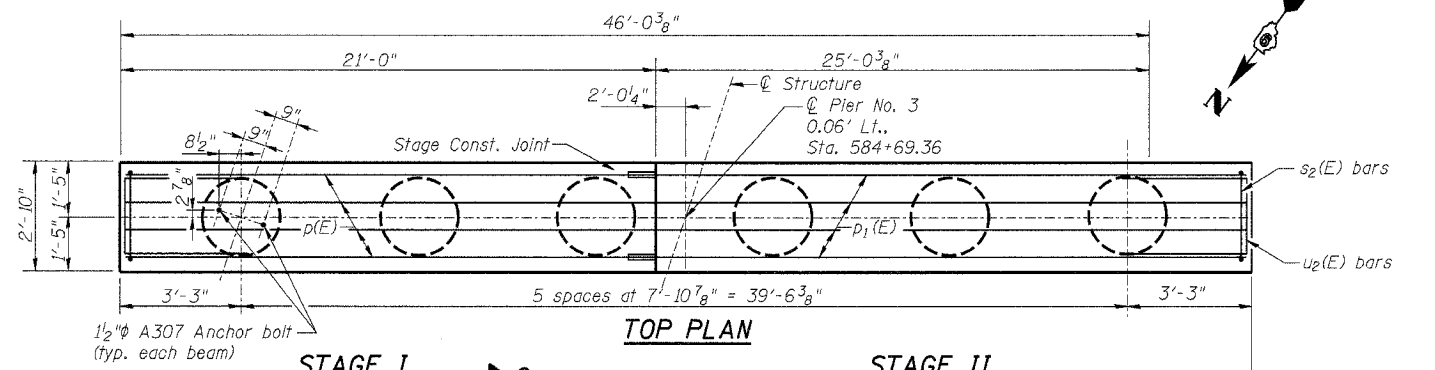
BAR u₄(E)

BILL OF MATERIAL

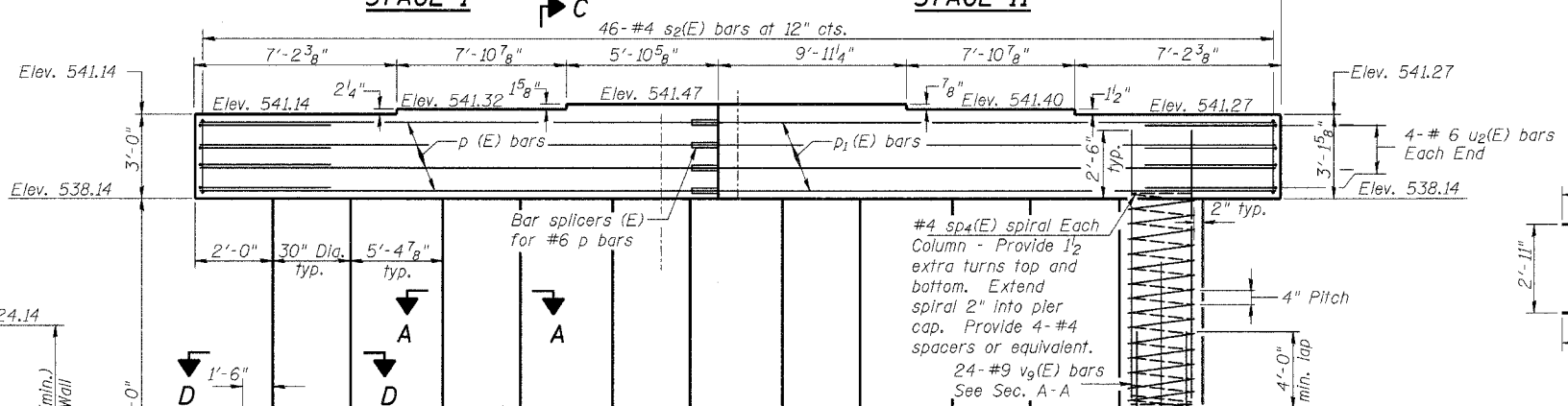
Bar	No.	Size	Length	Shape
h ₂ (E)	48	#5	20'-3"	—
p(E)	10	#6	20'-9"	—
p ₁ (E)	10	#6	24'-9"	—
s ₂ (E)	46	#4	11'-1"	□
sp ₃	6	#4	17'-4"	⋈
sp ₄ (E)	6	#4	14'-3"	⋈
u ₂ (E)	8	#6	9'-6"	U
u ₃ (E)	20	#6	11'-9"	U
u ₄ (E)	84	#5	16'-0"	U
v ₈	144	#9	17'-0"	—
v ₅ (E)	144	#9	8'-0"	—
v ₉ (E)	144	#9	16'-6"	—
Drilled Shaft in Soil			Foot	61
Drilled Shaft in Rock			Foot	42
Concrete Structures			Cu. Yd.	86.3
Reinforcement Bars, Epoxy Coated			Pound	24070
Reinforcement Bars			Pound	2430
Bar Splicers			Each	34

Reinforcement Bars designated (E) shall be epoxy coated.
Cast steps monolithically with cap.
Space cap reinforcement to miss anchor bolts.
Splices in spiral reinforcement shall be lap splices of 48 bar or wire diameters but not less than 12 inches, or shall be welded.
**Length is height of spiral.

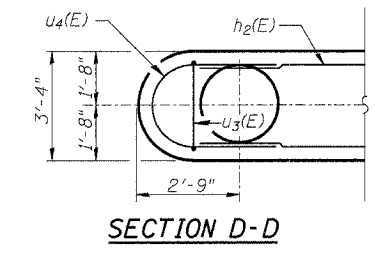
PIER 3
U.S. ROUTE 51 OVER TRIBUTARY TO
DRURY CREEK AND CN/IC RAILROAD
FAP 322 - SECTION (11-IVB)-1
UNION COUNTY
STATION 583+74.84
STRUCTURE NO. 091-0073



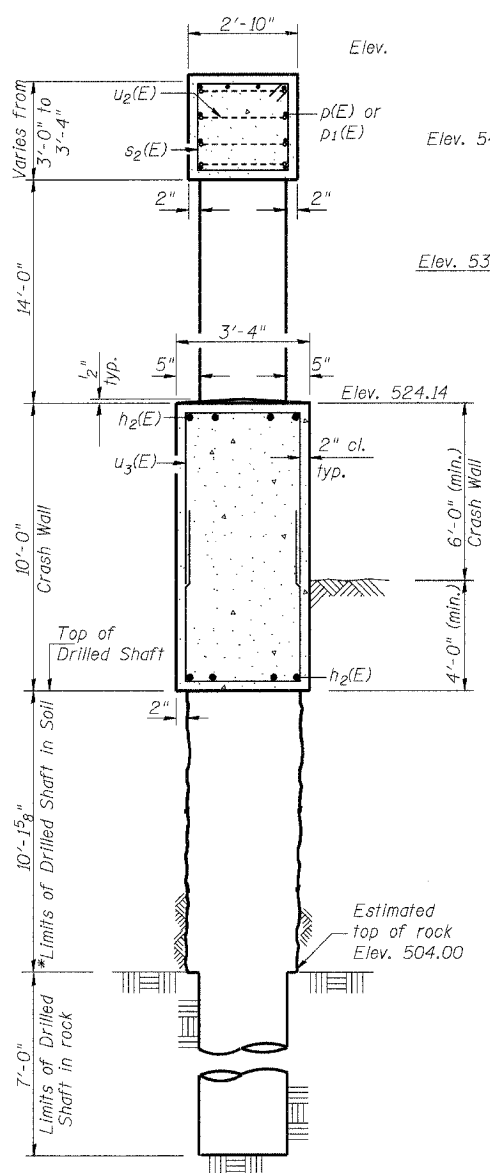
TOP PLAN



ELEVATION
(Looking South)



SECTION D-D



SECTION C-C

DESIGNED	GLH
CHECKED	TML
DRAWN	RJN
CHECKED	TML
P-DSCW 9-01-03	

* The quantities and reinforcement detailing are based on the top of shaft and the estimated top of rock elevations shown and may change based on the actual top of rock encountered at each shaft and the final top of shaft elevation.

02/15/2005