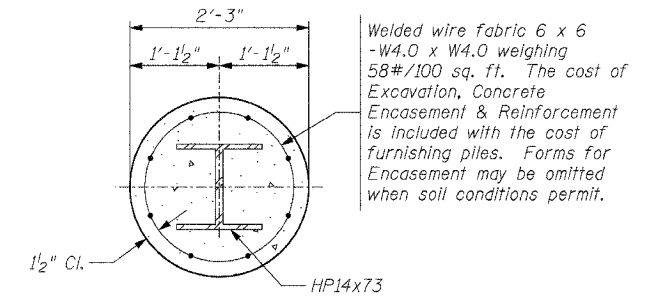
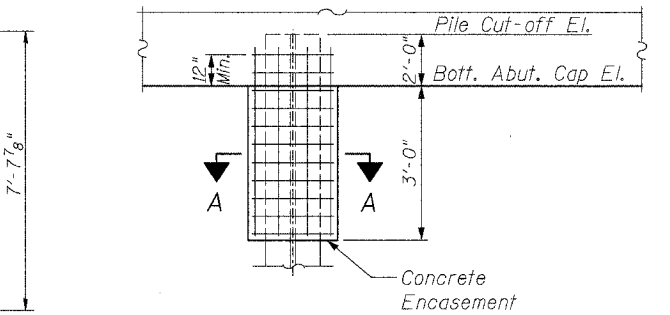
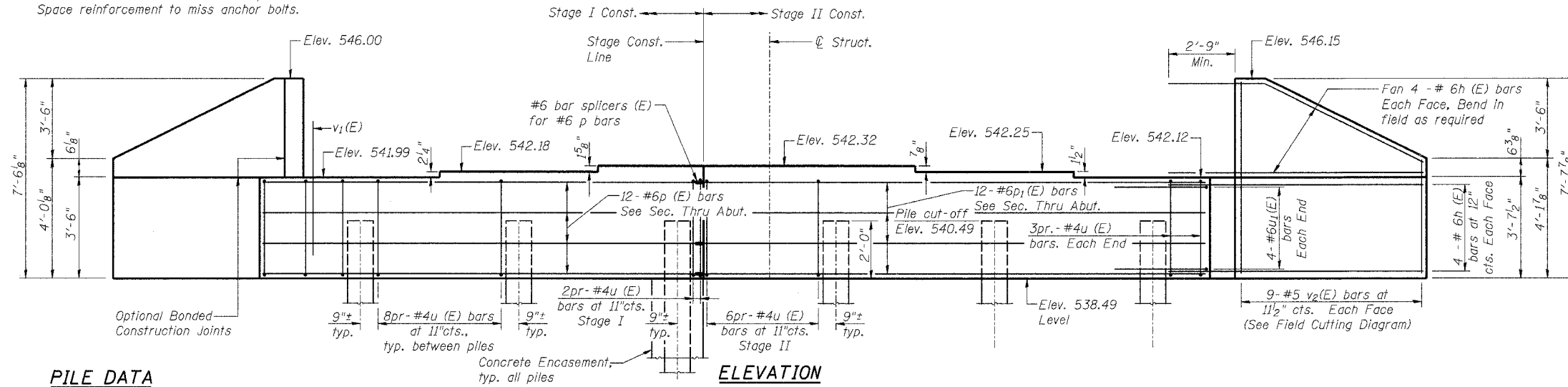


STATE OF ILLINOIS
DEPARTMENT OF TRANSPORTATION

ROUTE NO.	SECTION	COUNTY	TOTAL SHEETS	SHEET NO.
F.A.P. 322	*	UNION	39	33
SHEET NO. 16 22 SHEETS				
FED. ROAD DIST. NO. 7	ILLINOIS	FED. AID PROJECT-		
* (11-IVB)-1 CONTRACT NO. 98488				

Notes: Pour steps monolithically with cap.
Reinforcement bars designated (E)
shall be epoxy coated.
See sheet 2 of 22 for foundation plan.
Space reinforcement to miss anchor bolts.

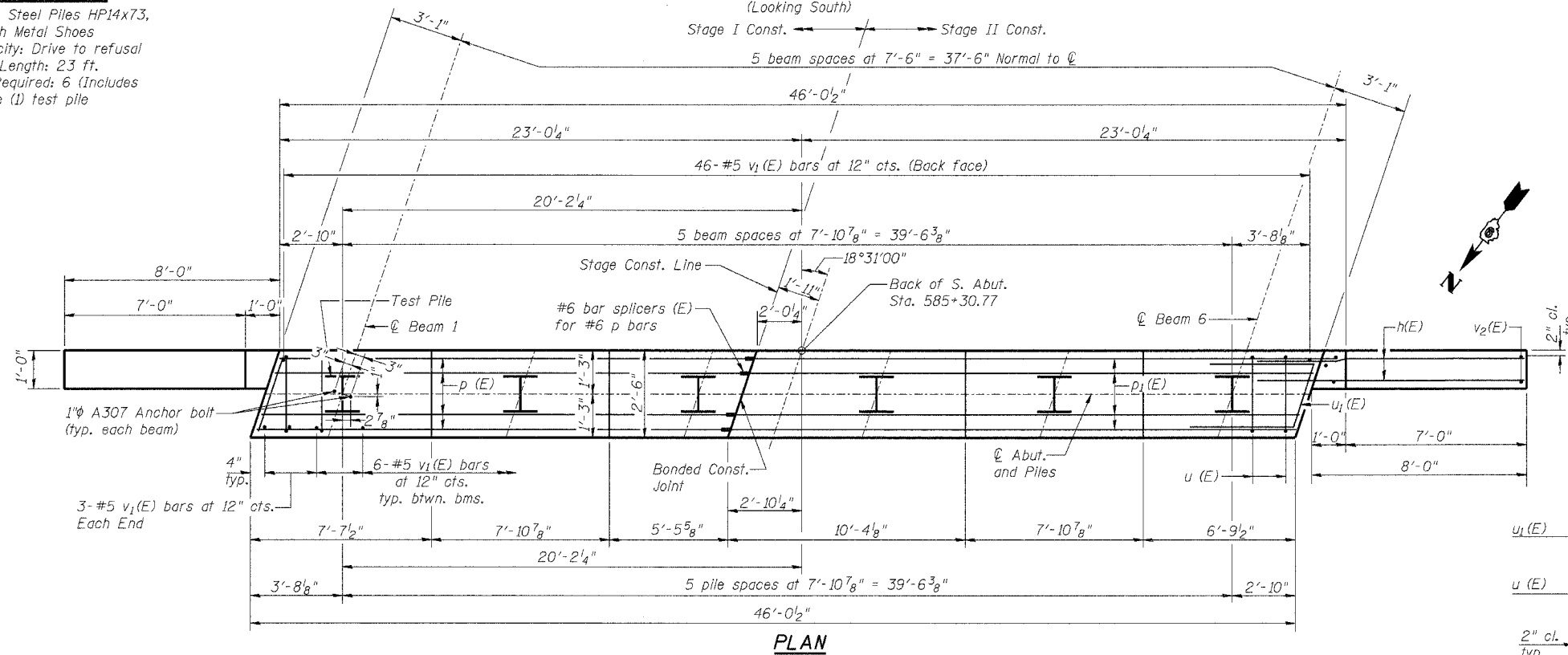


SECTION A-A
PILE ENCASEMENT DETAIL

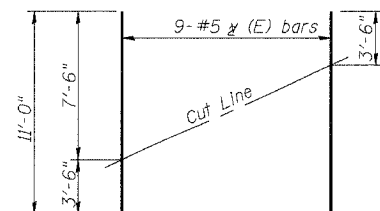
PILE DATA

Type: Steel Piles HP14x73,
with Metal Shoes
Capacity: Drive to refusal
Est. Length: 23 ft.
No. Required: 6 (Includes
one (1) test pile)

ELEVATION
(Looking South)

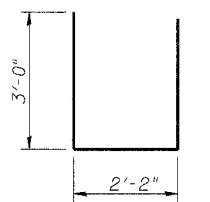


PLAN

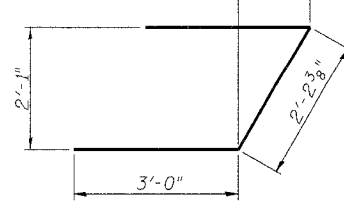


FIELD CUTTING DIAGRAM

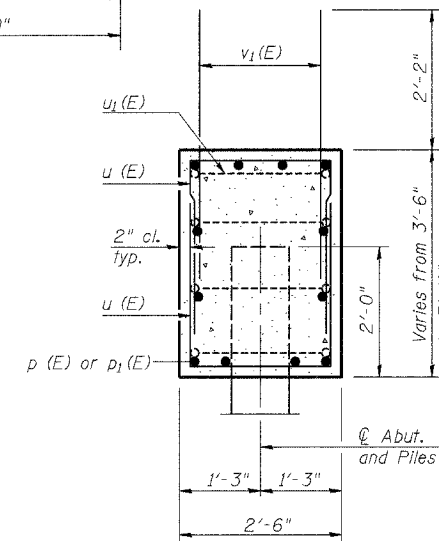
Order v2(E) full length. Cut as shown and use remainder of bars in opposite face.



BARS u (E)



BAR u1 (E)



SEC. THRU ABUT.

BILL OF MATERIAL

Bar No.	Size	Length	Shape
h(E)	#6	11'-6"	—
p(E)	#6	20'-9"	—
p1(E)	#6	24'-9"	—
u(E)	#4	8'-2"	U
u1(E)	#6	8'-3"	7
v1(E)	#5	4'-4"	—
v2(E)	#5	11'-0"	—
Concrete Structures	Cu. Yd.	19.8	
Reinforcement Bars, Epoxy Coated	Pound	2330	
Structure Excavation	Cu. Yd.	101	
Bar Splicers	Each	12	
Furnishing Steel Piles	Foot	115	
Driving Steel Piles	Foot	115	
Test Pile	Each	1	
Metal Shoes	Each	5	

SOUTH ABUTMENT
U.S. ROUTE 51 OVER TRIBUTARY TO
DRURY CREEK AND CN/IC RAILROAD
FAP 322 - SECTION (11-IVB)-1
UNION COUNTY
STATION 583+74.84
STRUCTURE NO. 091-0073

DESIGNED	GLH
CHECKED	TML
DRAWN	RJN
CHECKED	TML

AI-R 9-01-03

02/15/2005