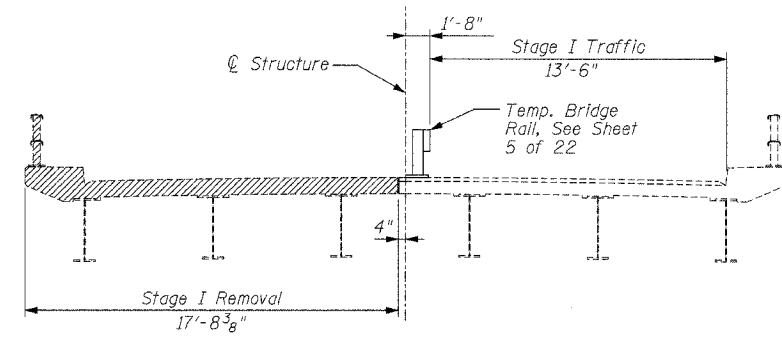


STATE OF ILLINOIS  
DEPARTMENT OF TRANSPORTATION

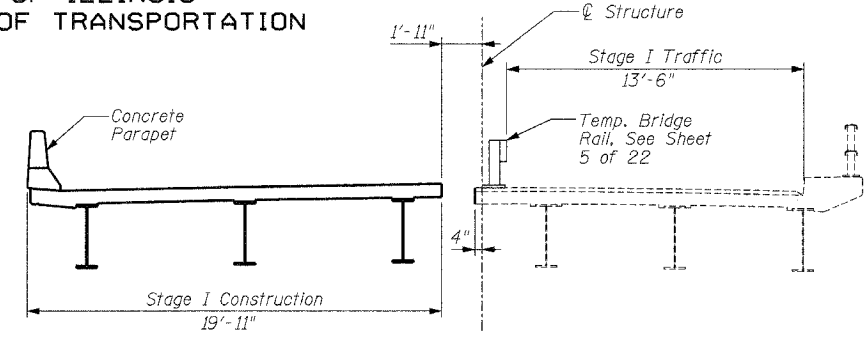
|                       |         |                  |        |           |
|-----------------------|---------|------------------|--------|-----------|
| ROUTE NO.             | SECTION | COUNTY           | SHEETS | SHEET NO. |
| F.A.P. 322            | *       | UNION            | 39     | 20        |
| FED. ROAD DIST. NO. 7 | BALANCE | FED. AID PROJECT |        |           |

\* (11-IVB)-1 CONTRACT NO. 98488

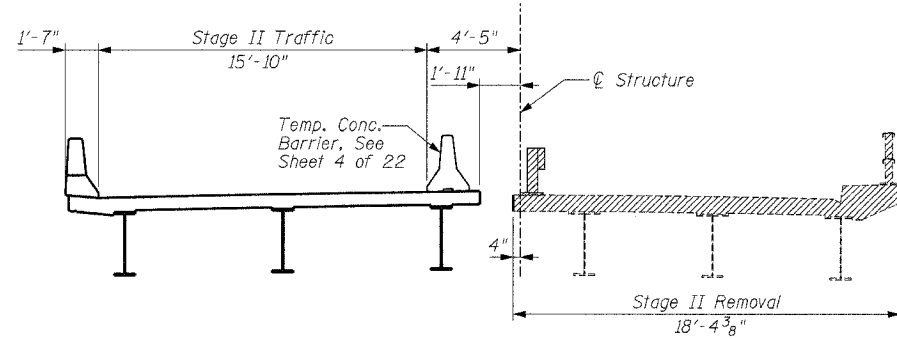
SHEET NO. 3  
22 SHEETS



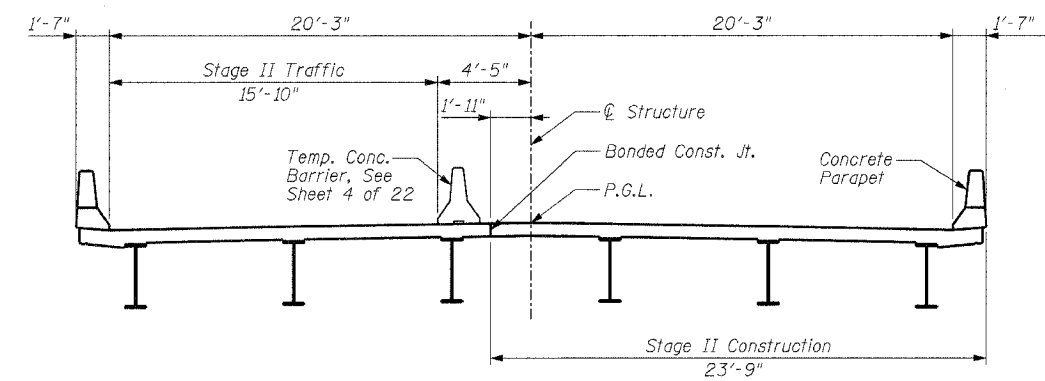
**CROSS SECTION - STAGE I REMOVAL**  
Looking Southerly



**CROSS SECTION - STAGE I CONSTRUCTION**  
Looking Southerly



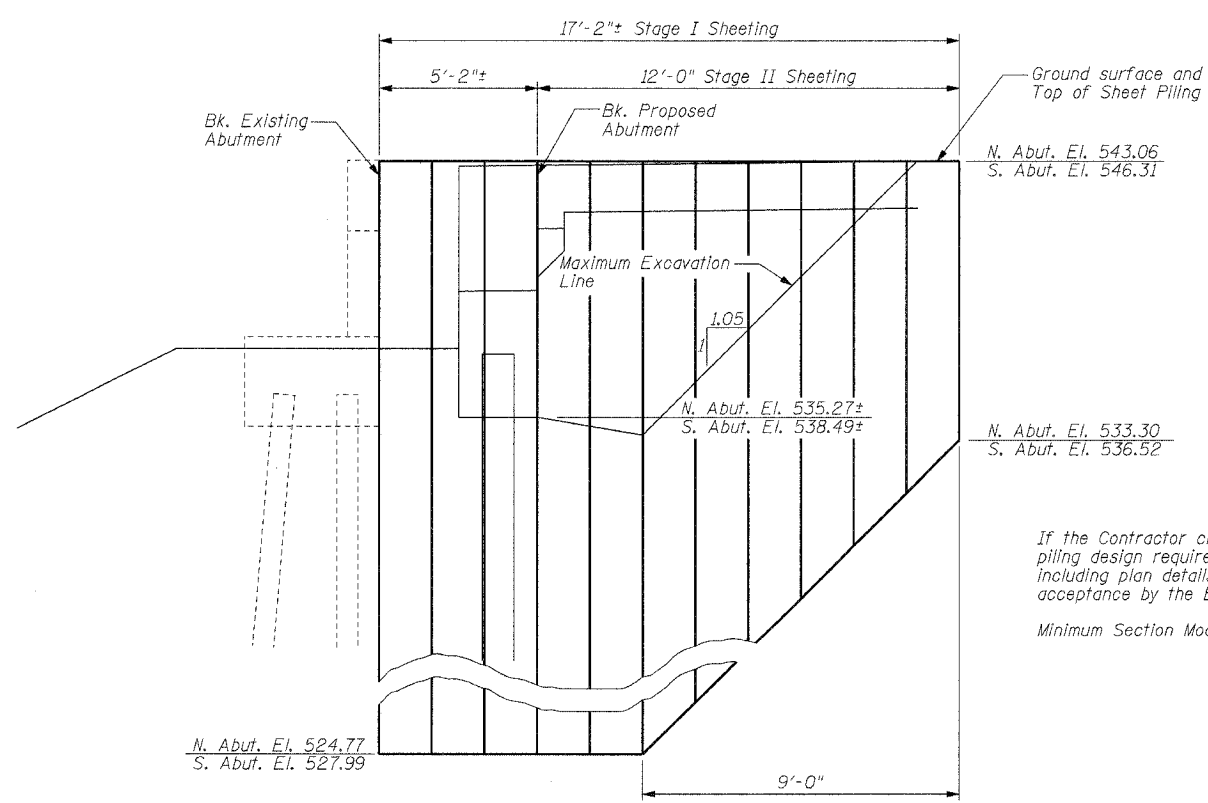
**CROSS SECTION - STAGE II REMOVAL**  
Looking Southerly



**CROSS SECTION - STAGE II CONSTRUCTION**  
Looking Southerly

**NOTES**

For Quantity of Temporary Concrete Barrier, see Roadway plans.  
Hatched areas Indicates Removal of Existing Structures.



**TEMPORARY SHEET PILING DETAIL**

If the Contractor chooses to alter the temporary cantilevered sheet piling design requirements shown on the plans, a design submittal including plan details and calculations will be required for review and acceptance by the Engineer.  
Minimum Section Modulus = 4.7 in<sup>3</sup>/ft.

**STAGE CONSTRUCTION DETAILS**  
U.S. ROUTE 51 OVER TRIBUTARY TO  
DRURY CREEK AND CN/IC RAILROAD  
FAP 322 - SECTION (11-IVB)-1  
UNION COUNTY  
STATION 583+74.84  
STRUCTURE NO. 091-0073

|          |     |
|----------|-----|
| DESIGNED | GLH |
| CHECKED  | TML |
| DRAWN    | RJN |
| CHECKED  | TML |

02/21/2005