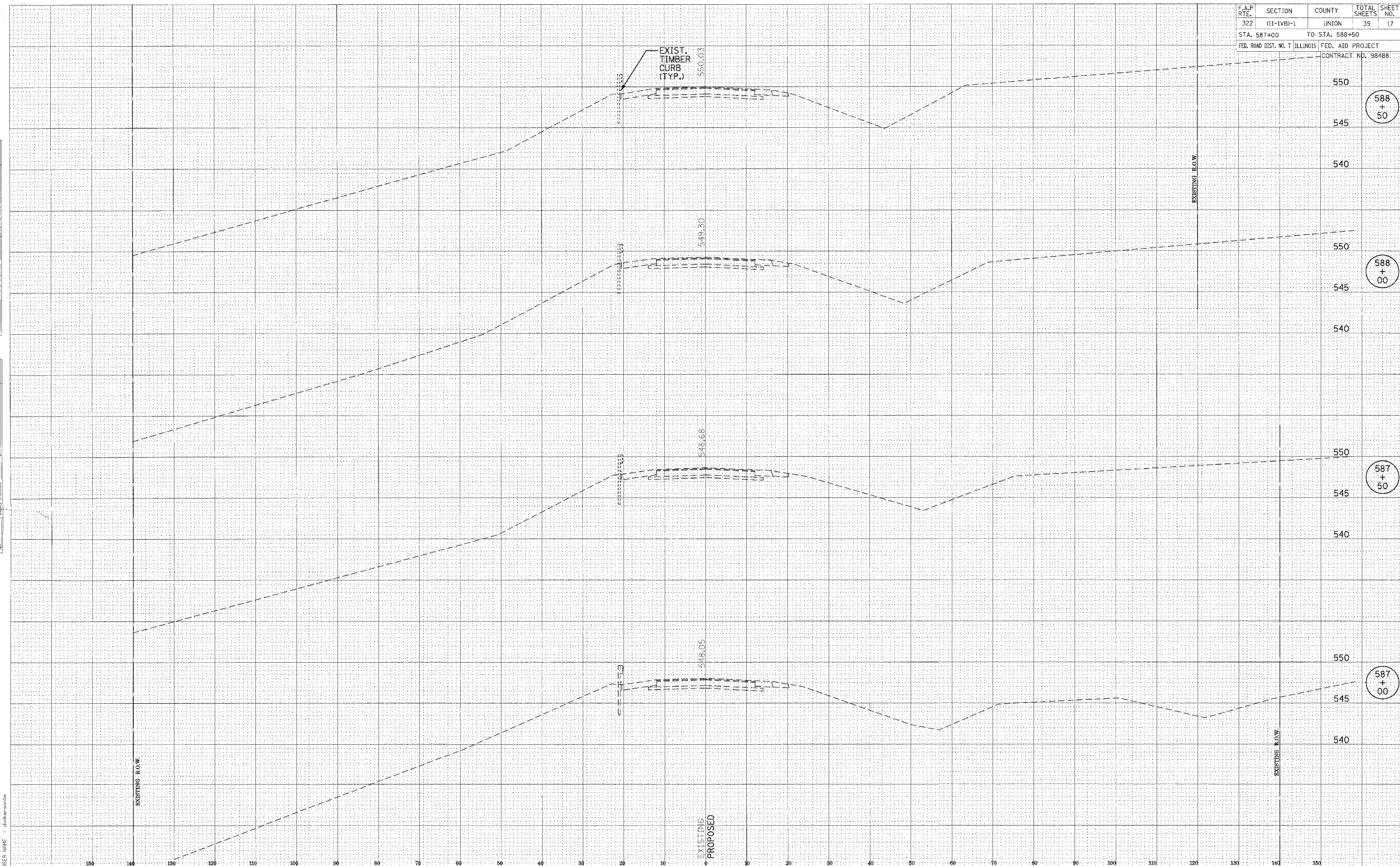


F.A.P. RTE.	SECTION	COUNTY	TOTAL SHEETS	SHEET NO.
322	(11-1VB)-1	UNION	39	17
STA. 587+00		TO STA. 588+50		
FED. ROAD DIST. NO. 7		ILLINOIS FED. AID PROJECT		CONTRACT NO. 98488

DATE	BY
DATE	BY
DATE	BY
DATE	BY
DATE	BY

DATE	BY
DATE	BY
DATE	BY
DATE	BY
DATE	BY

PLOT DATE = 3/29/2005
 FILE NAME = c:\p\projects\11-1VB-1\12-17 4-sec B11-8073.dgn
 PLOT SCALE = 1/8" = 1'-0"
 USER NAME = dtker@sonda



CROSS SECTIONS OF ROADWAY PROPOSED U.S. ROUTE 51 BRIDGE OVER DRURY CREEK AND CNIC RAILROAD