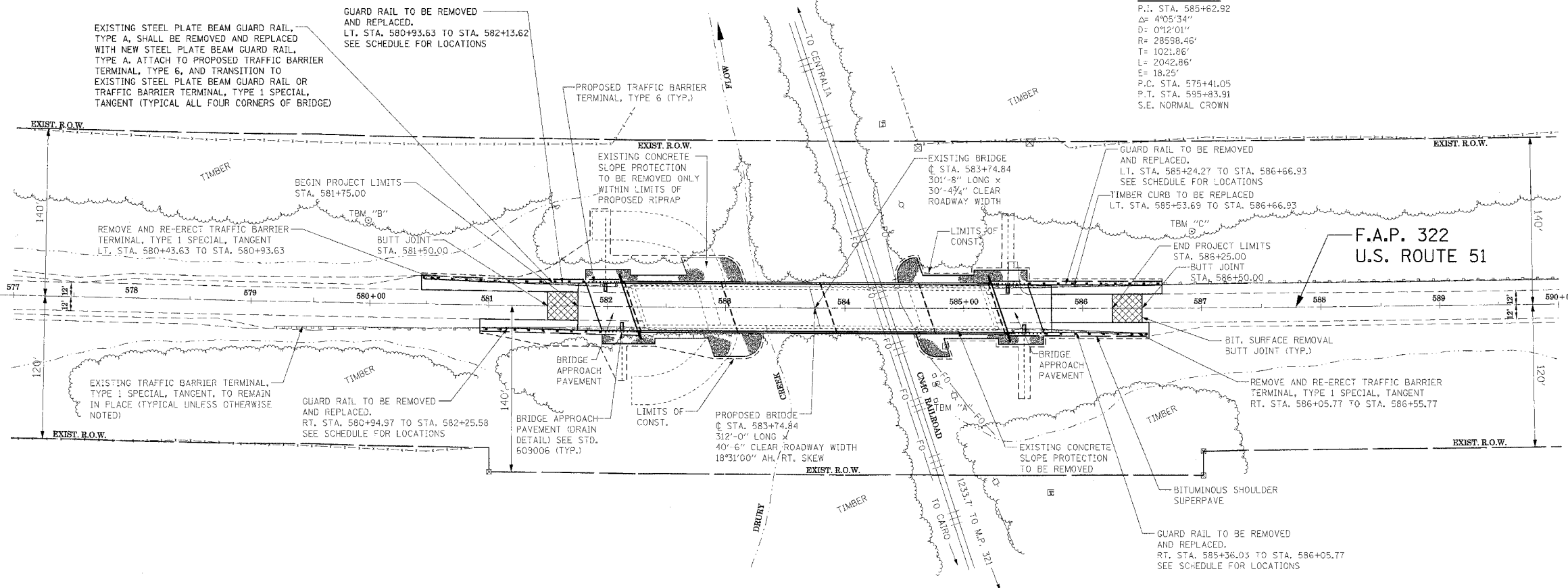


F.A.P. R.T.E.	SECTION	COUNTY	TOTAL SHEETS	SHEET NO.
322	(11-1VB)-1	UNION	39	6
STA. 577+00		TO STA. 590+00		
FED. ROAD DIST. NO. 7 ILLINOIS FED. AID PROJECT				
CONTRACT NO. 98488				

CURVE DATA

P.I. STA. 585+62.92
 $\Delta = 4^{\circ}05'34''$
 $D = 0'12'01''$
 $R = 28598.46'$
 $T = 1021.86'$
 $L = 2042.86'$
 $E = 18.25'$
P.C. STA. 575+41.05
P.T. STA. 595+83.91
S.E. NORMAL CROWN

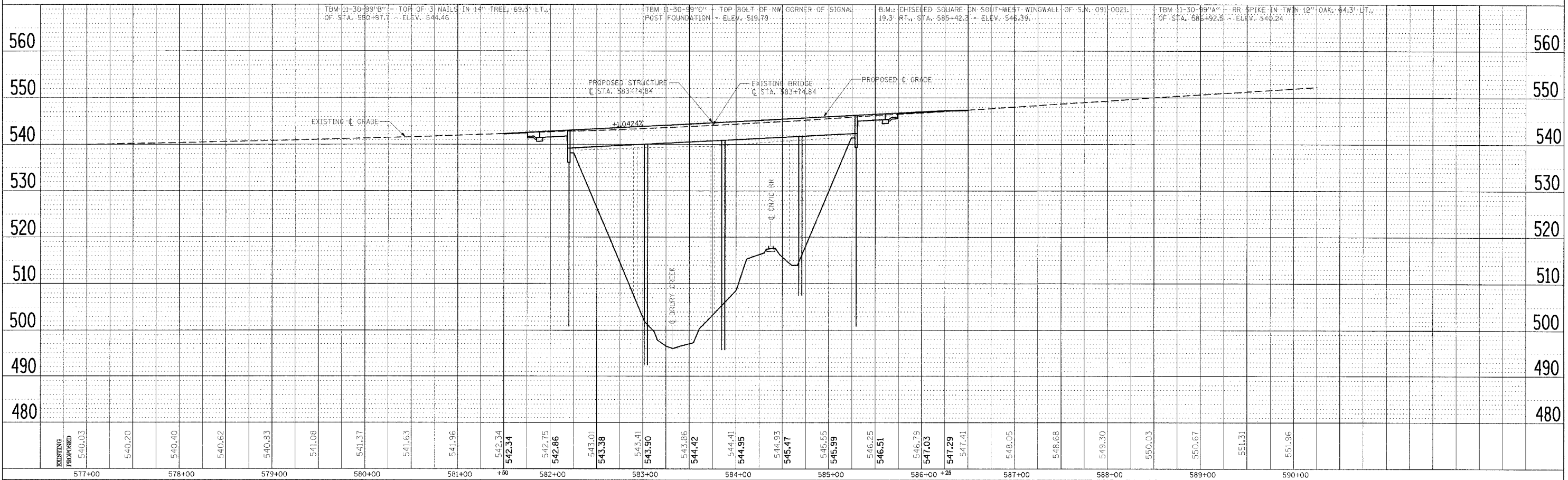


SCALE:
 PLAN: 1"=50'
 PROFILE: 1"=50' HORIZ., 1"=10' VERT.

DATE	BY
DATE	BY
DATE	BY

DATE	BY
DATE	BY
DATE	BY

PLOT DATE = 9/29/2005
 FILE NAME = c:\p\projects\98488\p1\98488.dgn
 PLOT SCALE = 50:1
 USER NAME = dickerstein



PLAN AND PROFILE OF ROADWAY PROPOSED U.S. ROUTE 51 BRIDGE OVER DRURY CREEK AND CNIC RAILROAD

FAP 322 SECTION (11-1VB)-1 UNION COUNTY, ILLINOIS