

98488

F.A.P. RTE.	SECTION	COUNTY	TOTAL SHEETS	SHEET NO.
322	(11-1VB)-1	UNION	39	1

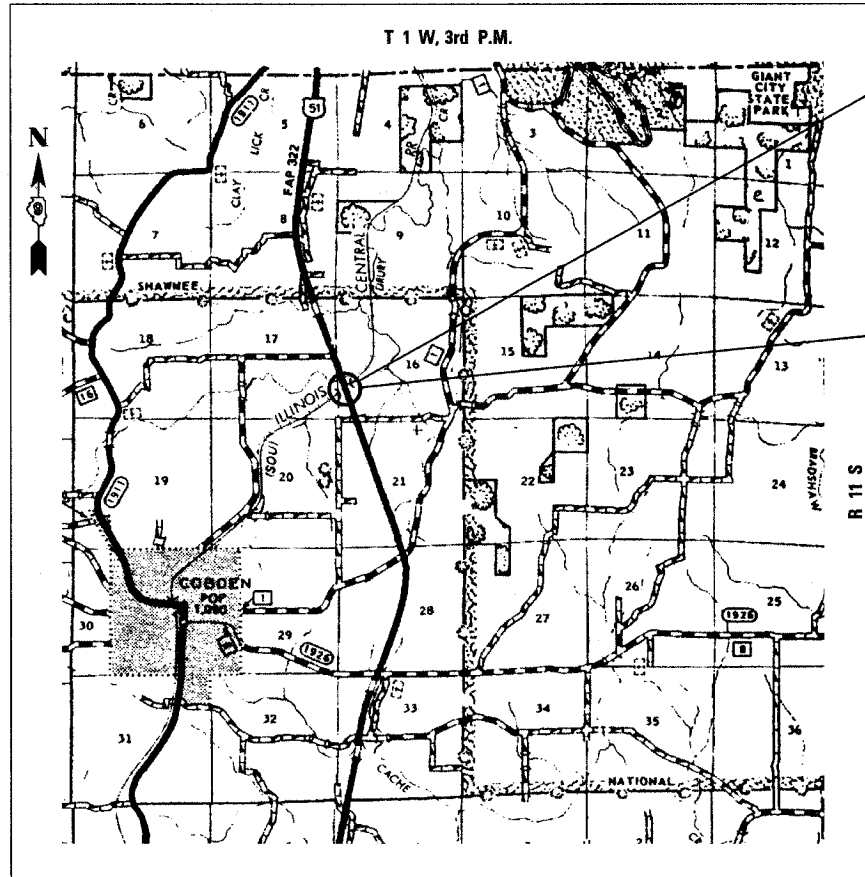
STATE OF ILLINOIS
DEPARTMENT OF TRANSPORTATION
DIVISION OF HIGHWAYS

**PROPOSED
HIGHWAY PLANS**

FAP ROUTE 322 (US ROUTE 51)
SECTION (11-1VB)-1
PROJECT: *BRF-0322(075)*
UNION COUNTY
C-99-063-01

**BRIDGE REPLACEMENT OVER A TRIBUTARY TO
DRURY CREEK AND CN / IC RAILROAD**

FOR INDEX OF SHEETS, SEE SHEET NO. 2
FOR SUMMARY OF QUANTITIES, SEE SHEET NO. 3



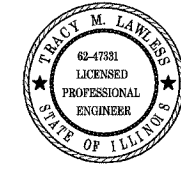
BEGIN SECTION
STA. 581 + 50.00

BRIDGE REPLACEMENT
STA. 583 + 74.84
312'-0" BK.-BK. ABUTMENTS
40'-6" CLEAR WIDTH
18°31' RIGHT AHEAD SKEW
EXIST. STRUCTURE NO. 091-0021
PROP. STRUCTURE NO. 091-0073

END SECTION
STA. 586 + 25.00

LOCATION MAP

GROSS LENGTH = 475.00 FT. (0.090 MI.)
NET LENGTH = 475.00 FT. (0.090 MI.)



TRACY M. LAWLESS
FREEBURG, ILLINOIS
ILLINOIS LICENSED PROFESSIONAL
ENGINEER NO. 62-47331
EXPIRES NOV. 30, 2005

STATE OF ILLINOIS
DEPARTMENT OF TRANSPORTATION
DIVISION OF HIGHWAYS

SUBMITTED March 29 2005

May C Rami
DEPUTY DIRECTOR OF HIGHWAYS, REGION ENGINEER

May 13 2005
Mike Kine
ENGINEER OF DESIGN AND ENVIRONMENT

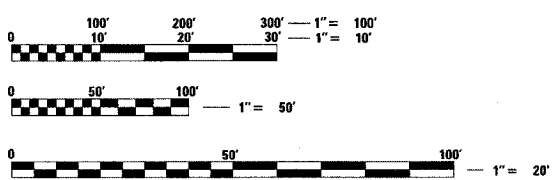
May 13 2005
Victor Maden
DIRECTOR OF HIGHWAYS, CHIEF ENGINEER

**PRINTED BY THE AUTHORITY
OF THE STATE OF ILLINOIS**

RHUTASEL and ASSOCIATES, INC.
CONSULTING ENGINEERS • LAND SURVEYORS
CENTRALIA, ILLINOIS FREEBURG, ILLINOIS
ILLINOIS DESIGN FIRM LICENSE NO. 184-000287

HIGHWAY CLASSIFICATION

F.A.P. RTE 322 - US RTE. 51
ADT = 6250 (2004) : 8400 (2024)
DHV : 690 (2020)
FUNCTIONAL CLASS : OTHER PRINCIPAL ARTERIAL
DESIGN SPEED : 55 MPH
POSTED SPEED : 55 MPH



FULL SIZE PLANS HAVE BEEN PREPARED USING STANDARD
ENGINEERING SCALES. REDUCED SIZED PLANS WILL NOT
CONFORM TO STANDARD SCALES. IN MAKING MEASUREMENTS
ON REDUCED PLANS, THE ABOVE SCALES MAY BE USED.

J.U.L.I.E.
JOINT UTILITY LOCATION INFORMATION FOR EXCAVATION
1-800-892-0123 Website: <http://illinois1call.com/>

CONTRACT NO. 98488

PROJECT ENGINEER: DAVID PICHE (618) 549-2171 CENTREX (217) 782-4554

COUNTY: UNION

SECTION (11-1VB)-1

ROUTE: FAP 322 (US 51)