

STATE OF ILLINOIS
DEPARTMENT OF TRANSPORTATION
DIVISION OF HIGHWAYS

**PLANS FOR PROPOSED
FEDERAL AID HIGHWAY**

CITY OF EAST ST LOUIS
STATE STREET (F.A.U. RTE. 9182)
CITY SECTION 00-00186-05-RS
PROJECT # M-5011(182)
JOB # C-98-345-04
ST. CLAIR COUNTY

INDEX OF SHEETS

- 1 COVER SHEET
- 2 GENERAL NOTES & TYPICAL SECTIONS
- 3 SUMMARY OF QUANTITIES
- 4 SCHEDULE OF QUANTITIES
- 5-8 PLAN AND PROFILE SHEETS
- 9 SIDEROAD PROFILES
- 10-11 PAVEMENT MARKING PLAN

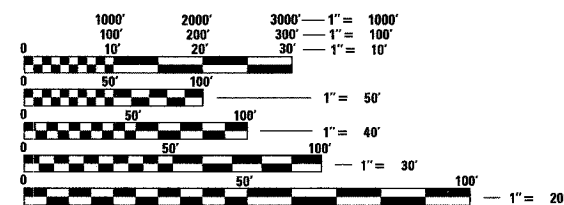
STANDARDS

000001-04	701301-02	702001-05
001006	701311-02	780001-01
424001-03	701606-04	781001-02
604006-02	701701-04	
606001-02	701801-03	

UTILITY OWNERS

SEE SHEET 2 FOR UTILITY OWNERS

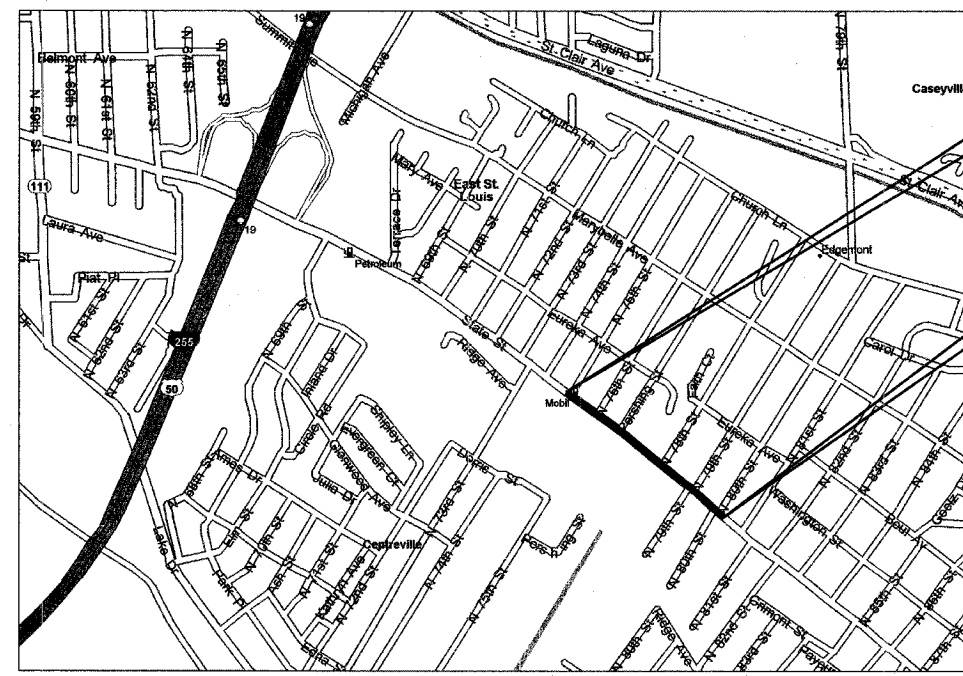
**SCALES USED FOR
VARIOUS PLAN SHEETS**



FULL SIZE PLANS HAVE BEEN PREPARED USING STANDARD ENGINEERING SCALES. REDUCED SIZED PLANS WILL NOT CONFORM TO STANDARD SCALES. IN MAKING MEASUREMENTS ON REDUCED PLANS, THE ABOVE SCALES MAY BE USED.

J.U.L.I.E.
JOINT UTILITY LOCATION INFORMATION FOR EXCAVATION
1-800-892-0123

CONTRACT NO. 97252



APPROX SCALE 0 1000' 2000' 3000'
TOWNSHIP 1 NORTH
RANGE 10 WEST

BEGIN CONSTRUCTION
STA. 5+60.00

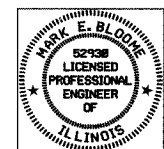
END CONSTRUCTION
STA. 26+00.00

TOTAL LENGTH OF SECTION 2040.00 FEET = 0.386 MILES

DESIGN SPEED
URBAN 30 MPH

ROADWAY DESIGN DESIGNATION
URBAN COLLECTOR

DESIGN TRAFFIC
2005 ADT 9600



HURST-ROSCHÉ ENGINEERS, INC.
CONSULTING ENGINEERS
EAST ST LOUIS, ILLINOIS

Mark E. Bloom 3/17/05
ILL PE 062-052930 MARK E. BLOOME DATE
LICENSE EXPIRES 11/30/2005

F.A.U. RTE.	SECTION	COUNTY	TOTAL SHEETS	SHEET NO.
9182	00-00186-05-RS	ST CLAIR	11	1
FED. ROAD DIST. NO.		ILLINOIS	FED. AID PROJECT	
CONTRACT NO. 97252				



APPROVED *a/22* ,2005

Carl E. Officer
CARL E. OFFICER, MAYOR, CITY OF EAST ST. LOUIS

PASSED *April 1* ,2005

Jennifer Oberlin
DISTRICT ENGINEER OF LOCAL ROADS AND STREETS

APPROVED *Mary C. Lamie* 4/1 ,2005

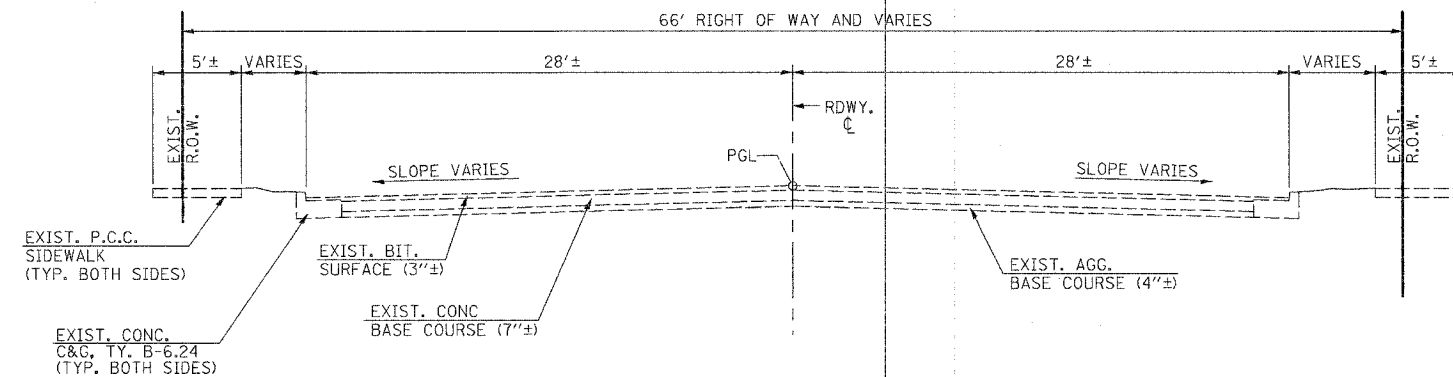
MARY C. LAMIE, P.E.
DEPUTY DIRECTOR OF HIGHWAYS
REGION FIVE ENGINEER
STATE OF ILLINOIS
DEPARTMENT OF TRANSPORTATION

**PRINTED BY THE AUTHORITY
OF THE STATE OF ILLINOIS**

GENERAL NOTES

1. THIS SECTION SHALL BE CONSTRUCTED IN ACCORDANCE WITH THE PLANS, THE "STANDARD SPECIFICATION FOR ROAD AND BRIDGE CONSTRUCTION" ADOPTED JANUARY 1, 2002 AND THE SPECIAL PROVISIONS.
2. CONTRACTOR TO SAW-CUT ALL EXISTING PAVEMENT A DEPTH OF 3" IN ALL AREAS WHERE IT ABUTS PROPOSED PAVEMENT. SAW CUTS SHALL BE INCLUDED IN THE UNIT PRICE FOR BITUMINOUS CONCRETE SURFACE COURSE. BUTT JOINTS WILL NOT BE PAID FOR SEPARATELY, BUT SHALL BE INCLUDED IN THE COST FOR BITUMINOUS SURFACE REMOVAL.
3. ALL STATIONING REFERS TO THE CENTERLINE OF NEW CONSTRUCTION.
4. ANY STANDARD NUMBER LISTED SHALL BE INTERPRETED TO MEAN THE COPY OF THE STANDARD INCLUDED IN THE SPECIFICATIONS.
5. THE LOCATIONS AND / OR DEPTHS OF UNDERGROUND UTILITIES SHOWN HAVE BEEN TAKEN FROM AVAILABLE RECORD INFORMATION FURNISHED BY THE UTILITY OWNERS AND MUST BE CONSIDERED APPROXIMATE. FIELD MARKING OF FACILITIES IN CRITICAL AREAS MAY BE OBTAINED BY PROVIDING A MINIMUM OF 48 HOURS ADVANCE NOTICE TO J.U.L.I.E. @ (800) 892 - 0123.
6. THE FOLLOWING CONSTANTS WERE USED IN THE CALCULATIONS OF QUANTITIES FOR THIS PROJECT:
 - BITUMINOUS CONCRETE SURFACE COURSE, SUPERPAVE (2 1/2") - 112 LBS. / SQ. YD. / INCH THICKNESS
 - LEVELING BINDER (MACHINE METHOD) (3/4") - 112 LBS. / SQ. YD. / INCH THICKNESS
 - BITUMINOUS MATERIALS (PRIME COAT) - 0.10 GAL. / SQ. YD.
 - AGGREGATE (PRIME COAT) - 4 LBS. / SQ. YD.
7. DISPOSAL OF ALL MATERIAL FROM DEMOLITION (CURB REMOVAL, ETC.) SHALL BE INCLUDED IN THE CONTRACT AND IN ACCORDANCE WITH ALL STATE AND LOCAL CODES.
8. THE EXISTING RIGHT OF WAY LINES AND WIDTHS SHOWN ON THE PLAN SHEETS WERE TAKEN FROM EXISTING ST. CLAIR COUNTY TAX MAPS AND ATLASES. THE LOCATIONS SHOWN ARE FOR INFORMATIONAL PURPOSES ONLY.
9. COST OF SIDEWALK REMOVAL SHALL BE INCLUDED IN THE COST OF PORTLAND CEMENT CONCRETE SIDEWALK, 4 INCH.

F.A.U. RTE.	SECTION	COUNTY	TOTAL SHEETS	SHEET NO.
9182	00-00186-05-RS	ST CLAIR	11	2
STA. 5+60.00		STA. 26+00.00		
FED. ROAD DIST. NO.		ILLINOIS FED. AID PROJECT		
CONTRACT NO. 97252				

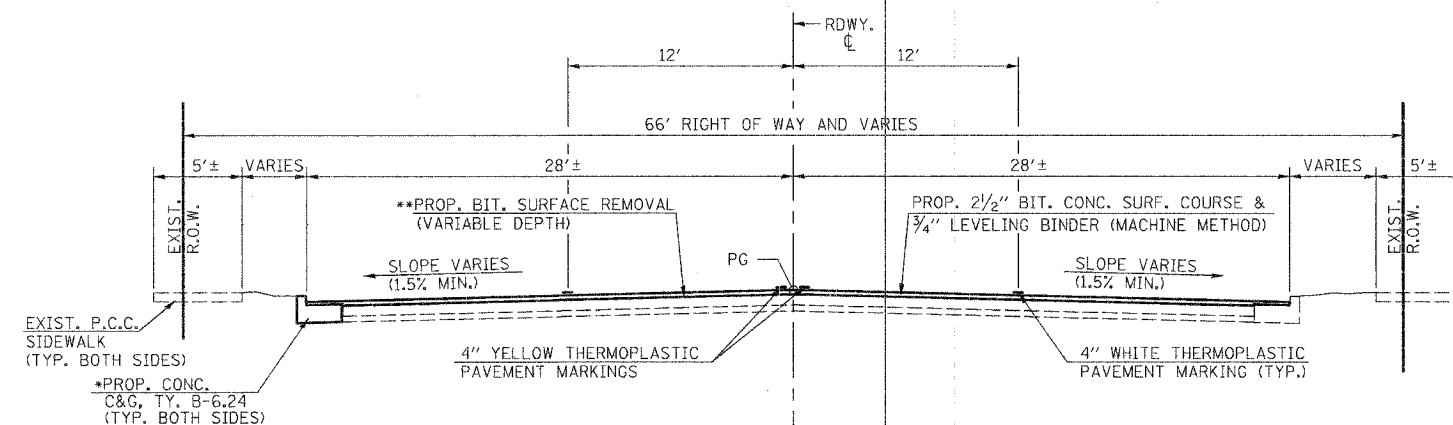


EXISTING TYPICAL ROADWAY SECTION

(NOT TO SCALE)

UTILITY OWNERS

WATER:	ILLINOIS AMERICAN WATER COMPANY 100 NORTH WATERWORKS DRIVE BELLEVILLE, ILLINOIS 62223 (618)-277-9887	TELEPHONE:	AMERITECH 203 GOETHE COLLINSVILLE, ILLINOIS 62234 618-346-6400
GAS:	ILLINOIS POWER COMPANY CONSTRUCTION DEPARTMENT DECATUR, ILLINOIS 1-800-892-7715	CABLE T.V.:	A.T. & T. BROADBAND 508 NIAGRA EAST ALTON, ILLINOIS 62024 618-875-4155
POWER:	AMEREN UE 500 EAST BROADWAY EAST ST. LOUIS, ILLINOIS 62203 1-800-552-7583		J.U.L.I.E. (800)-892-0123 EAST ST. LOUIS TOWNSHIP CITY OF EAST ST. LOUIS, ILLINOIS



PROPOSED TYPICAL ROADWAY SECTION

(NOT TO SCALE)

- * SEE SHEET 4 FOR SCHEDULED LOCATIONS.
- ** REMOVE EXISTING BITUMINOUS PAVEMENT TO TOP OF EXISTING CONCRETE PAVEMENT (APPROX. 3')

REVISIONS	DATE

ILLINOIS DEPARTMENT OF TRANSPORTATION

GENERAL NOTES & TYPICAL SECTIONS

SCALE: NO SCALE
DATE: 03/16/05
DRAWN BY: DEG
CHECKED BY: MEB

F.A.U. RTE.	SECTION	COUNTY	TOTAL SHEETS	SHEET NO.
9182	00-00186-05-RS	ST. CLAIR	11	4
STA.	TO STA.			
FED. ROAD DIST. NO.	ILLINOIS	FED. AID PROJECT		
CONTRACT NO. 97252				

COMBINATION CURB & GUTTER REMOVAL

RIGHT SIDE STATION	TO	LENGTH FOOT
5+60.00	6+31.09	71.1
7+79.00	8+40.00	61.0
8+76.60	8+95.12	18.5
9+35.40	10+55.35	120.0
10+93.55	11+10.28	16.7
22+72.74	23+31.40	58.7
24+03.14	24+17.95	24.8
25+06.16	25+20.35	14.2
TOTAL RIGHT SIDE		385.0
USE		385.0

LEFT SIDE STATION	TO	LENGTH FOOT
12+42.18	12+75.93	44.2
TOTAL LEFT SIDE		44.2
USE		45.0

TOTAL RIGHT SIDE	385.0
TOTAL LEFT SIDE	45.0
TOTAL	430 FOOT

COMBINATION CURB & GUTTER, TY. B-6.24

RIGHT SIDE STATION	TO	LENGTH FOOT
5+60.00	6+31.09	71.1
7+79.00	8+40.00	61.0
8+76.60	8+95.12	18.5
9+35.40	10+55.35	120.0
10+93.55	11+10.28	16.7
22+72.74	23+31.40	58.7
24+03.14	24+17.95	24.8
25+06.16	25+20.35	14.2
TOTAL RIGHT SIDE		385.0
USE		385.0

LEFT SIDE STATION	TO	LENGTH FOOT
12+42.18	12+75.93	44.2
TOTAL LEFT SIDE		44.2
USE		45.0

TOTAL RIGHT SIDE	385.0
TOTAL LEFT SIDE	45.0
TOTAL	430 FOOT

TEMPORARY RAMP

LOCATION	TEMPORARY RAMP SQ YD	
5+60.00	62.22	
26+00.00	62.22	
TOTAL		124.44
USE		125 SQ YD

PCC SIDEWALK, 4"

LEFT AND RIGHT SIDE STATION	TO	AREA SQ FT
12+56.00 LT	12+73.16 LT	55.9
24+03.14 RT	24+17.95 RT	34.1
TOTAL LEFT AND RIGHT SIDE		90.0
USE		90.0
TOTAL		90 SQ FT

INLETS TO BE ADJUSTED WITH NEW TYPE 3 F&G

STATION	O/S	EACH
6+19.26	27.58' RT.	1
9+58.94	29.11' LT.	1
13+13.63	27.83' RT.	1
16+89.70	27.90' LT.	1
21+48.90	31.43' LT.	1
21+97.03	29.11' LT.	1
24+12.23	30.84' RT.	1
24+57.98	28.38' RT.	1
24+66.22	32.43' LT.	1
25+12.00	30.12' LT.	1
TOTAL		10 EACH

MANHOLES TO BE ADJUSTED

STATION	O/S	EACH
9+19.08	31.58' LT.	1
TOTAL		1 EACH

STRIP REFLECTIVE CRACK CONTROL TREATMENT

LOCATION	*STRIP REFLECTIVE CRACK CONTROL FOOT	
LONGITUDINAL JOINTS	6120.00	
TRANSVERSE JOINTS	2856.00	
75TH STREET	66.00	
76TH STREET	60.00	
PERSHING BLVD	54.00	
78TH STREET	73.00	
JULIUS STREET	64.00	
79TH STREET	59.00	
VAN RAALTE STREET	58.00	
BOTH STREET	61.00	
TOTAL		9471.00
USE		9471 FOOT

* ASSUMED BASED ON 3 LONGITUDINAL JOINTS AND TRANSVERSE JOINTS ON 40' CENTERS.

PAVEMENT PATCHING TYPE II, 11"

LOCATION	PAVEMENT PATCHING TYPE II, 11" SQ YD	
22+80.00 TO 22+85.00 PATCH	11.36	
TOTAL		11.36
USE		12 SQ YD

PAVEMENT PATCHING TYPE IV, 11"

LOCATION	PAVEMENT PATCHING TYPE IV, 11" SQ YD	
76TH STREET	56.00	
PERSHING BLVD	50.02	
JULIUS STREET	189.23	
79TH STREET	52.49	
23+05.00 TO 23+18.00 PATCH	29.58	
VAN RAALTE STREET	52.60	
BOTH STREET	49.89	
TOTAL		479.82
USE		480 SQ YD

WORK ZONE PAVEMENT MARKING REMOVAL

STATION	TO	LENGTH FOOT
5+60.00	26+00.00	2040.00
TOTAL		2040.00
4' DASH - 36' SKIP		x 0.10
4 LINES		x 4
4 APPLICATION		x 4
4" MARKING WIDTH		x 0.33
TOTAL		1088 SQ FT

SHORT-TERM PAVEMENT MARKING

STATION	TO	LENGTH FOOT
5+60.00	26+00.00	2040.00
TOTAL		2040.00
4' DASH - 36' SKIP		x 0.10
4 LINES		x 4
4 APPLICATION		x 4
TOTAL		3264 FOOT

RAISED REFLECTIVE PAVT. MARKER

STATION	TO	LENGTH FOOT
5+60.00	26+00.00	2040.00
TOTAL		2040.00
1 EACH @ 80'		x 0.0125
2 LINES		x 2
TOTAL - WHITE		51.00
USE		51

STATION	TO	LENGTH FOOT
5+60.00	26+00.00	2040.00
TOTAL		2040.00
1 EACH @ 40'		x 0.025
TOTAL - AMBER		51.00
USE		51
TOTAL - WHITE		51
TOTAL - AMBER		51
TOTAL		102 EACH

THERMOPLASTIC PAVEMENT MARKING - LINE 12"

STATION	LENGTH FOOT	
9+34 - LT	18.0	
12+89 - LT	13.0	
20+69 - RT	17.0	
21+72 - LT	20.0	
24+34 - RT	17.0	
24+89 - LT	21.0	
TOTAL		106.0 FOOT

THERMOPLASTIC PAVEMENT MARKING - LINE 4"

STATION	TO	LENGTH FOOT
5+60.00	26+00.00	2040.00
SUBTOTAL EASTBOUND		2040.00
WESTBOUND-WHITE LANE LINE		
STATION		LENGTH
FROM	TO	FOOT
5+60.00	26+00.00	2040.00
SUBTOTAL WESTBOUND		2040.00
SUBTOTAL EASTBOUND		2040.00
TOTAL		4080.00
10' DASH - 30' SKIP		x 0.25
TOTAL - WHITE		1020 FOOT
CENTER-DOUBLE YELLOW LINE		
STATION		LENGTH
FROM	TO	FOOT
6+25.00	9+05.00	280.00
9+62.00	12+62.00	300.00
13+13.00	18+21.00	508.00
19.00.00	20+35.00	135.00
21+05.00	21+45.00	40.00
22+10.00	24+00.00	190.00
25+20.00	26+00.00	80.00
TOTAL		1533.00
x 2		
TOTAL - YELLOW		3066 FOOT
TOTAL - WHITE		1020 FOOT
TOTAL - YELLOW		3066 FOOT
TOTAL		4086 FOOT

MIXTURE REQUIREMENTS SUPERPAVE PROJECT

ROUTE	FAU 9182
SECTION	00-00186-05-RS
COUNTY	ST. CLAIR
CONTRACT	97252

DESCRIPTION	STATE ST IN EAST ST. LOUIS
-------------	----------------------------

ADT (CONST YR)	9600
MU%	4
SU%	4
20 YR. ESAL'S	2.87

MIXTURE USE	SURFACE	LEVEL BINDER
AC/PG	PG 64-22	PG 64-22
RAP % (MAX)	10%	15%
DESIGN AIR VOIDS	4.0% @ Ndes=70	4.0% @ Ndes=70
MIX COMPOSITION (GRADE MIXTURE)		
FRICITION AGG.	MIXTURE "D"	MIXTURE "C"

BITUMINOUS QUANTITY TABLE

LOCATION	BITUMINOUS SURFACE REMOVAL (VARIABLE DEPTH) SQ YD	LEVELING BINDER (MACHINE METHOD), SUPERPAVE, N70 TON (112#/SQ YD/IN)	BITUMINOUS CONC. SURFACE COURSE, SUPERPAVE, MIX "D", N70 TON (112#/SQ YD/IN)	BITUMINOUS MATERIALS (PRIME COAT) GAL (0.10 GAL/SQ YD)	AGGREGATE (PRIME COAT) TON (4#/SQ YD)
STA 5+60.00 TO STA 26+00.00	14567.06	611.82	2039.39	1456.71	29.13
76TH STREET		2.35	7.84	5.60	0.11
PERSHING BLVD		2.10	7.00	5.00	0.10
JULIUS STREET		7.95	26.49	18.92	0.38
79TH STREET		2.20	7.35	5.25	0.10
STA. 22+80.00 TO STA 22+85.00		0.48	1.59	1.14	0.02
STA 23+05.00 TO STA 23+18.00		1.24	4.14	2.96	0.06
VAN RAALTE STREET		2.21	7.36	5.26	0.11
BOTH STREET		2.10	6.98	4.99	0.10
TOTAL	14567.06	632.45	2108.15	1505.82	30.12
USE	14568 SQ YD	633 TON	2109 TON	1506 GAL	31 TON

REVISIONS	DATE

ILLINOIS DEPARTMENT OF TRANSPORTATION

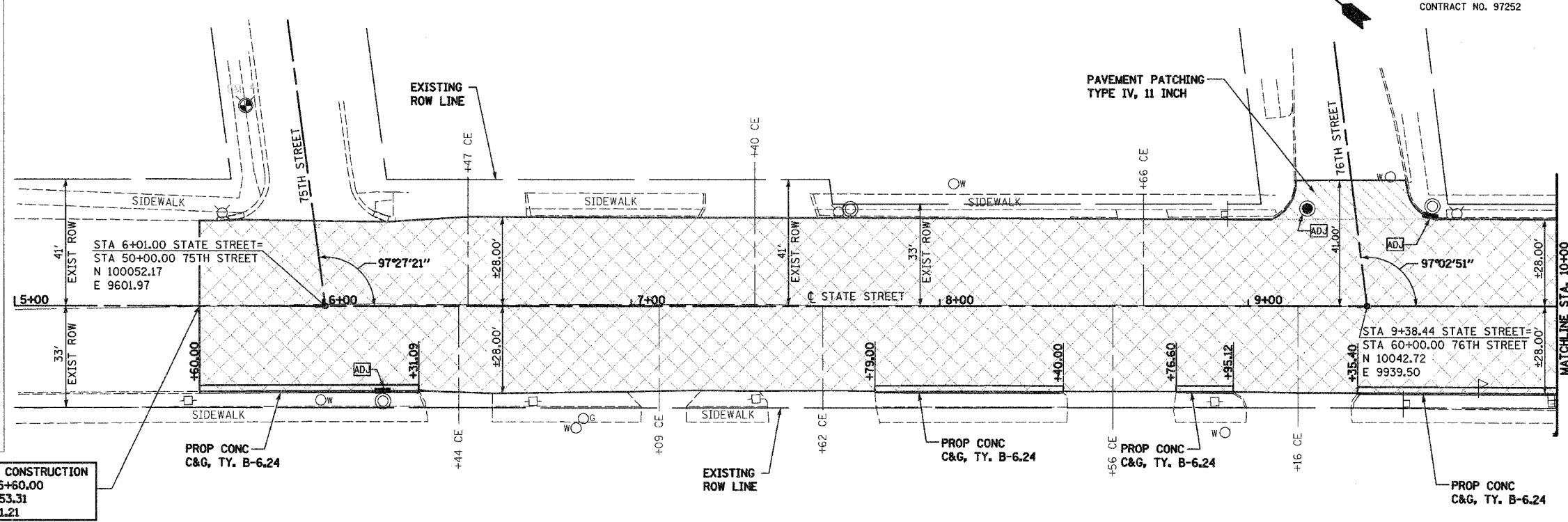
SCHEDULE OF QUANTITIES

SCALE: NO SCALE
DATE: 03/16/05

DRAWN BY: DEG
CHECKED BY: MEB

F.A.U. RTE.	SECTION	COUNTY	TOTAL SHEETS	SHEET NO.
9182	00-00186-05-RS	ST CLAIR	11	5
STA. 5+00		STA. 10+00		
FED. ROAD DIST. NO.	ILLINOIS	FED. AID PROJECT		
CONTRACT NO. 97252				

- LEGEND**
- LIMITS OF BIT. SURFACE REMOVAL & NEW BIT. SURFACE COURSE + LEVELING BINDER
 - LIMITS OF PAVEMENT PATCHING & NEW BIT. SURFACE COURSE + LEVELING BINDER
 - EXISTING MANHOLE
 - MANHOLE TO BE ADJUSTED
 - EXISTING STORM INLET
 - INLET TO BE ADJUSTED WITH NEW TYPE 3 FRAME & GRATE
 - EXISTING WATER VALVE
 - WATER VALVE TO BE ADJUSTED (BY OTHERS)
 - EXISTING GAS VALVE
 - GAS VALVE TO BE ADJUSTED (BY OTHERS)
 - EXISTING FIRE HYDRANT
 - EXISTING LIGHT POLE
 - EXISTING UTILITY POLE
 - EXISTING SIGN
 - UTILITY TO BE ADJUSTED

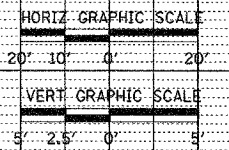
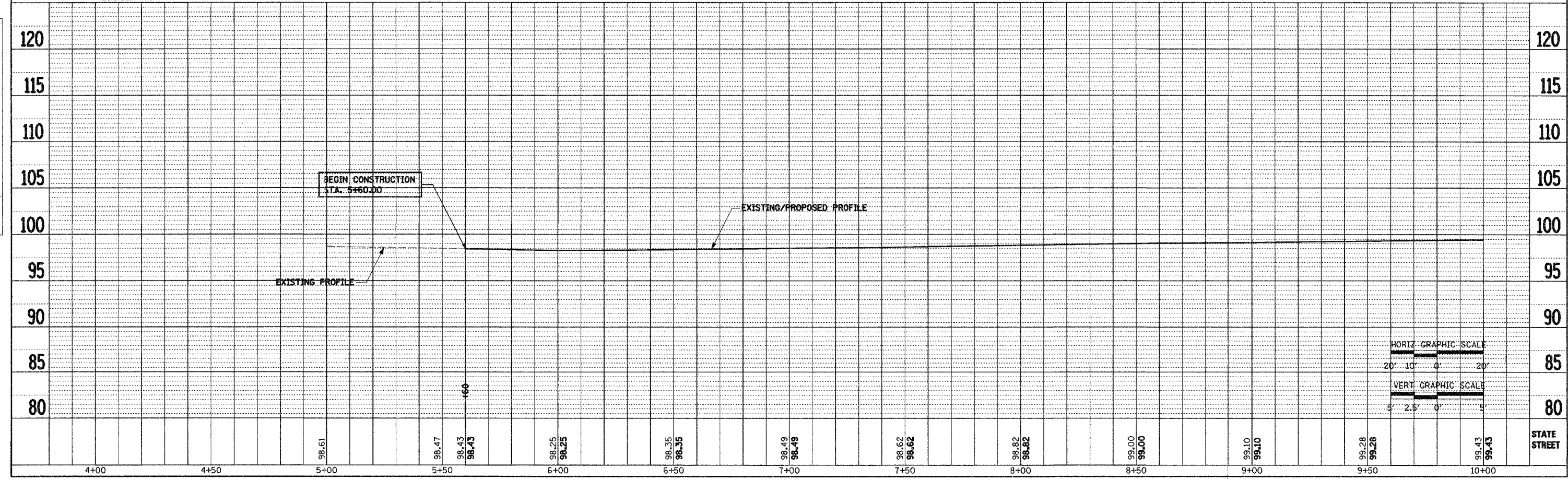
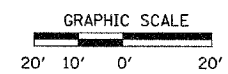


PLAN	SURVEYED	DATE
	BY	
	DATE	
	BY	
	DATE	
	BY	
	DATE	

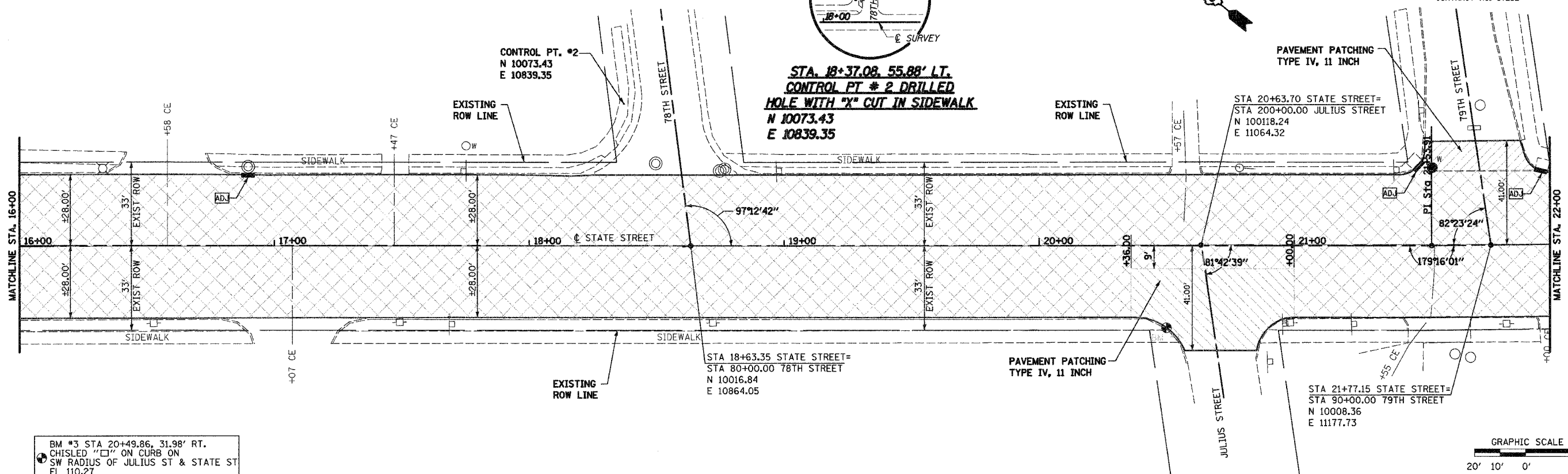
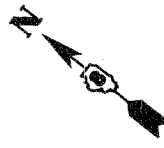
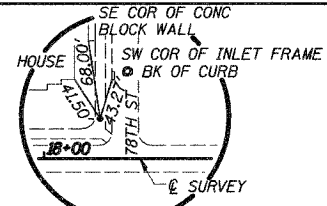
PROFILE	SURVEYED	DATE
	BY	
	DATE	
	BY	
	DATE	
	BY	
	DATE	

BM #1 STA 5+75.06, 64.97' LT.
 CHISLED "X" ON SE BOLT
 ON FIRE HYDRANT
 EL 100.00

BEGIN CONSTRUCTION
 STA. 5+60.00
 N 10053.31
 E 9561.21



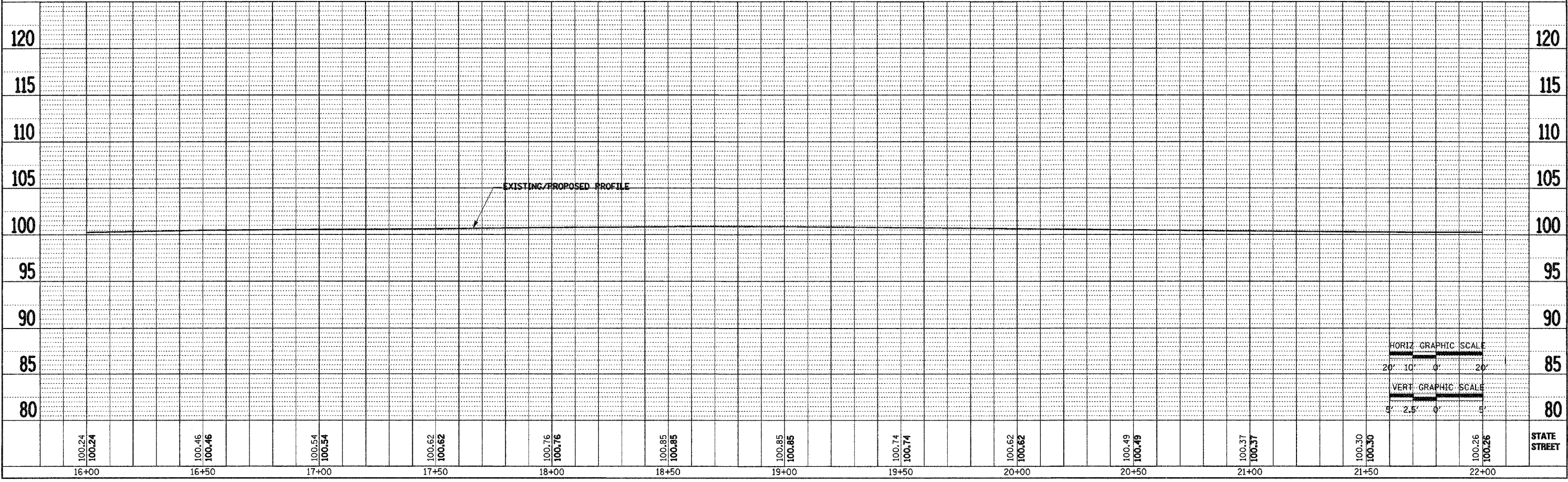
F.A.U. RTE.	SECTION	COUNTY	TOTAL SHEETS	SHEET NO.
9182	00-00186-05-RS	ST CLAIR	11	7
STA. 16+00		STA. 22+00		
FED. ROAD DIST. NO.		ILLINOIS FED. AID PROJECT		
CONTRACT NO. 97252				



BM #3 STA 20+49.86, 31.98' RT. CHISLED "□" ON CURB ON SW RADIUS OF JULIUS ST & STATE ST EL 110.27

PLAN	SURVEYED	BY	DATE
NOTE BOOK	ALIGNED		
NO.	RT. OF WAY CHECKED		
	NO. OF W.A. CHECKED		
	NO. OF S.D.S. FILE NAME		

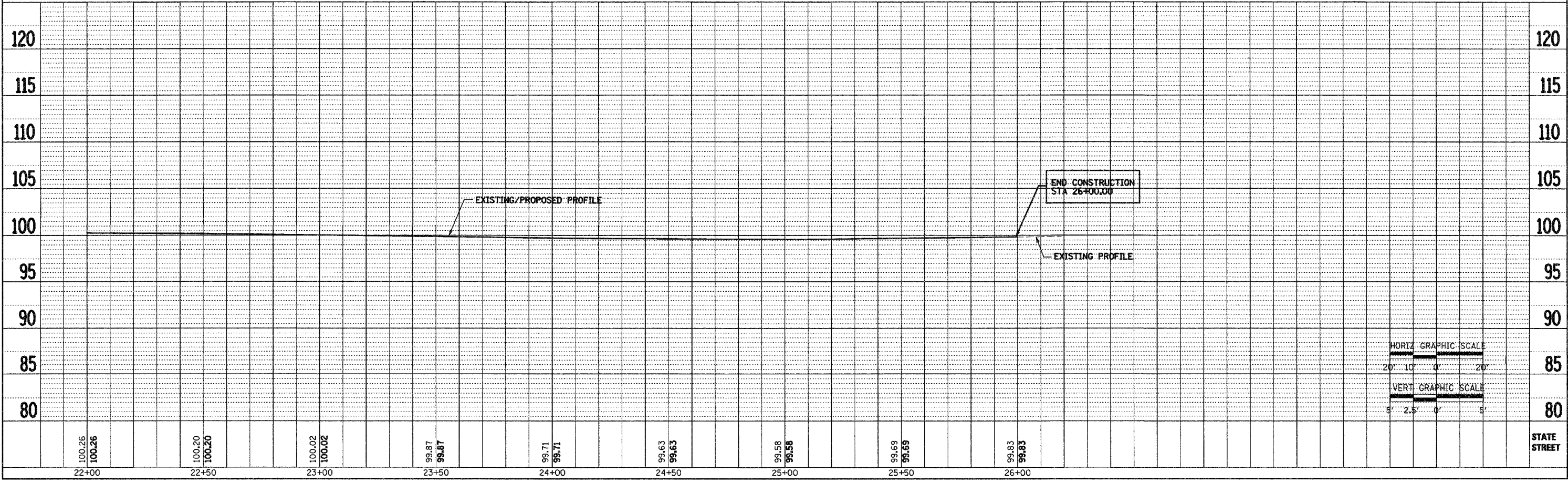
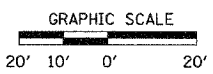
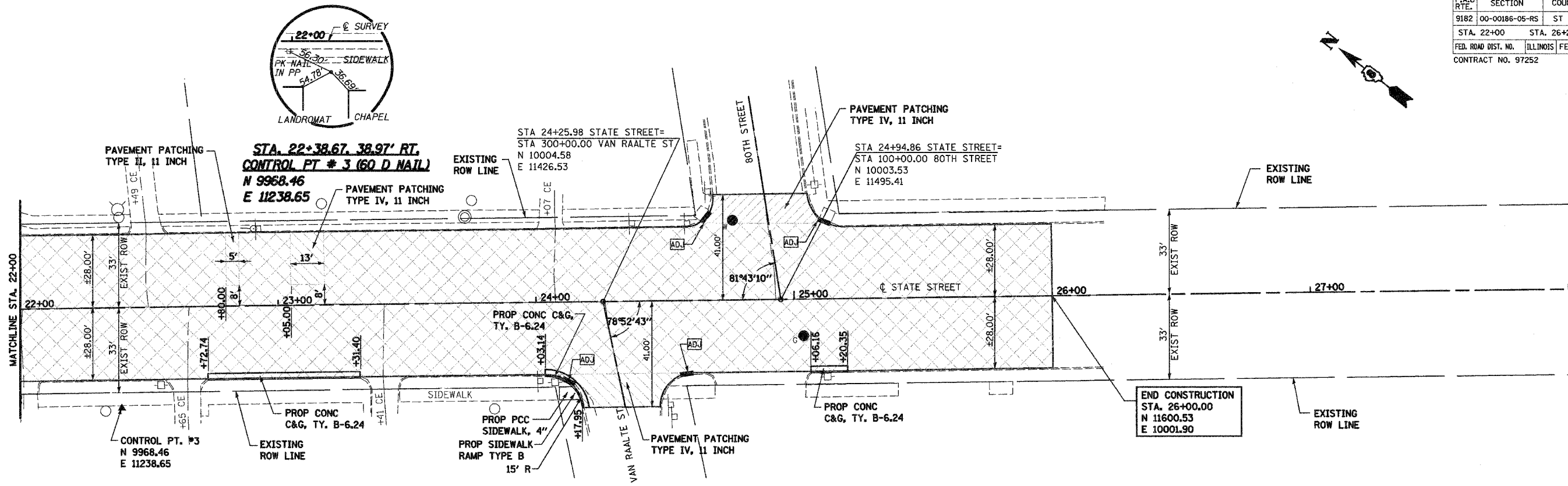
PROFILE	SURVEYED	BY	DATE
NOTE BOOK	GRADES CHECKED		
NO.	STRUCTURE NOTATIONS CHECKED		



F.A.U. RTE.	SECTION	COUNTY	TOTAL SHEETS	SHEET NO.
9182	00-00186-05-RS	ST CLAIR	11	8
STA. 22+00		STA. 26+20		
FED. ROAD DIST. NO.	ILLINOIS	FED. AID PROJECT		
CONTRACT NO. 97252				

PLAN	SURVEYED	BY	DATE
	ALIGNED		
	CHECKED		
	BY		
	DATE		
	NO.		

PROFILE	SURVEYED	BY	DATE
	ALIGNED		
	CHECKED		
	BY		
	DATE		
	NO.		

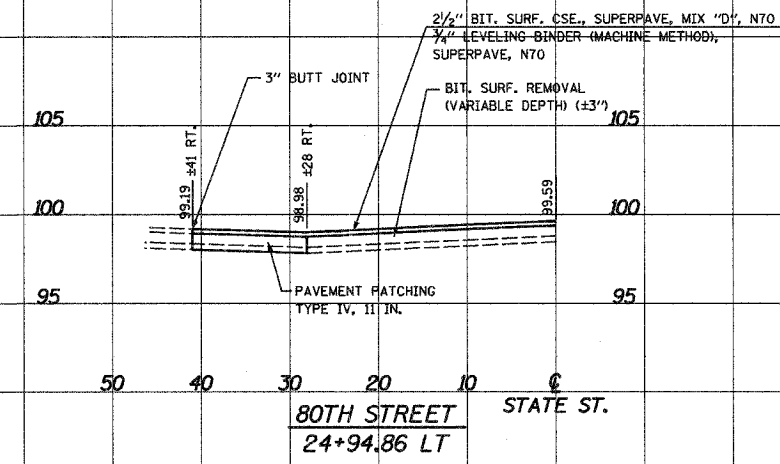
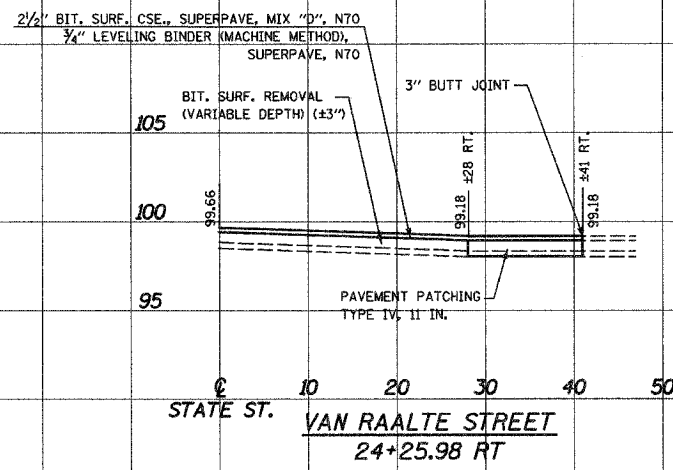
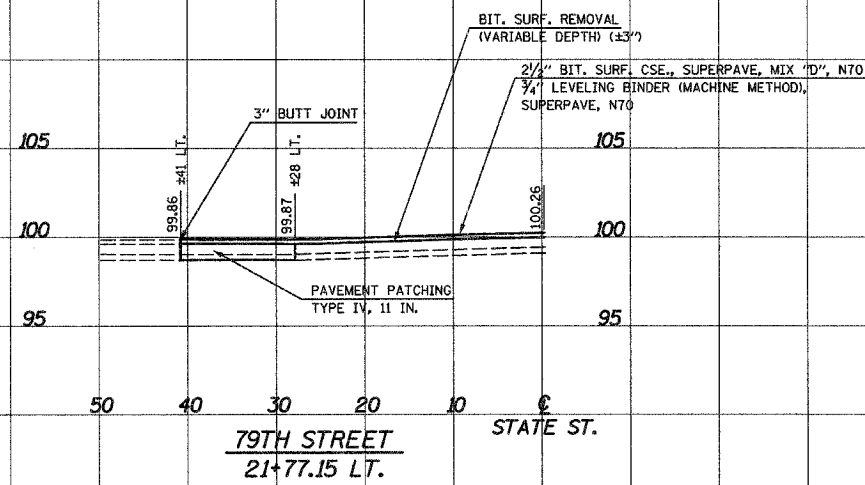
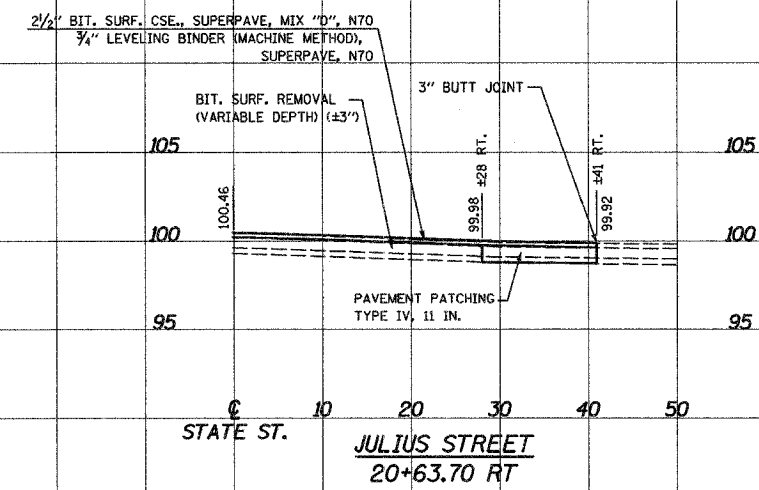
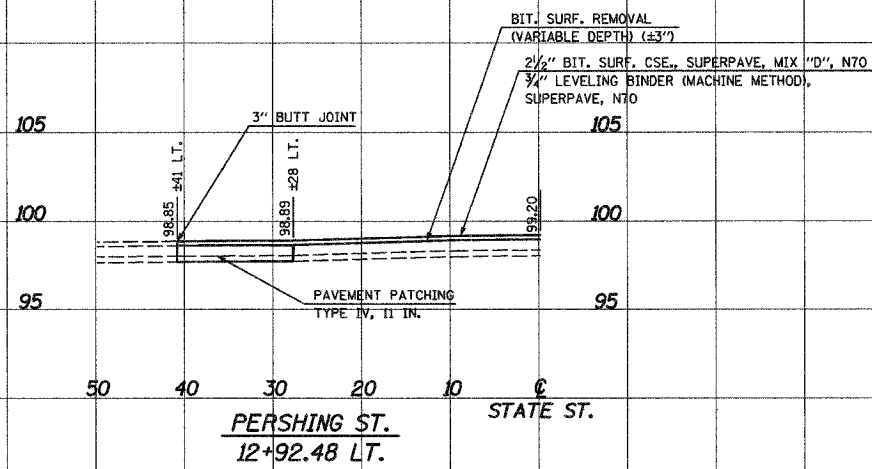
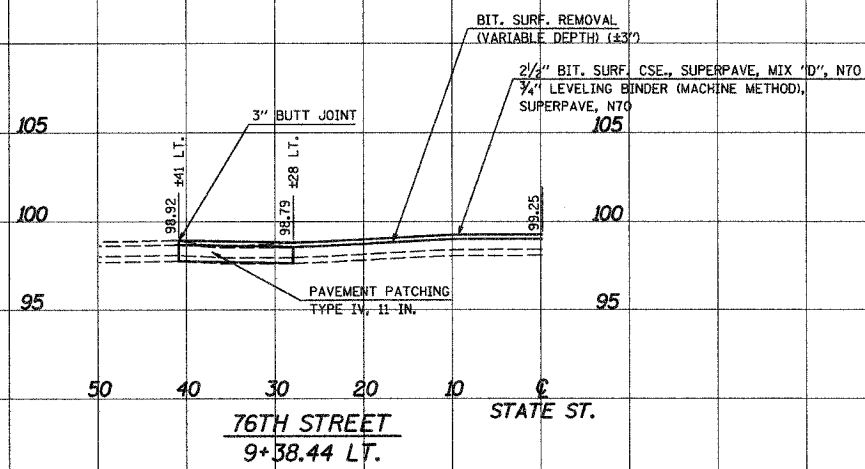


.../CONTRACT/97252/97252-05-RS-11-08.dwg

F.A.U. RTE.	SECTION	COUNTY	TOTAL SHEETS	SHEET NO.
9182	00-00186-05-RS	ST. CLAIR	11	9
STA. 5+60.00		STA. 18+90.00		
FED. ROAD DIST. NO.		ILLINOIS FED. AID PROJECT		
CONTRACT NO. 97252				

FROM DATE
 AREAS
 AREAS CHECKED
 NO.

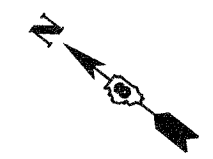
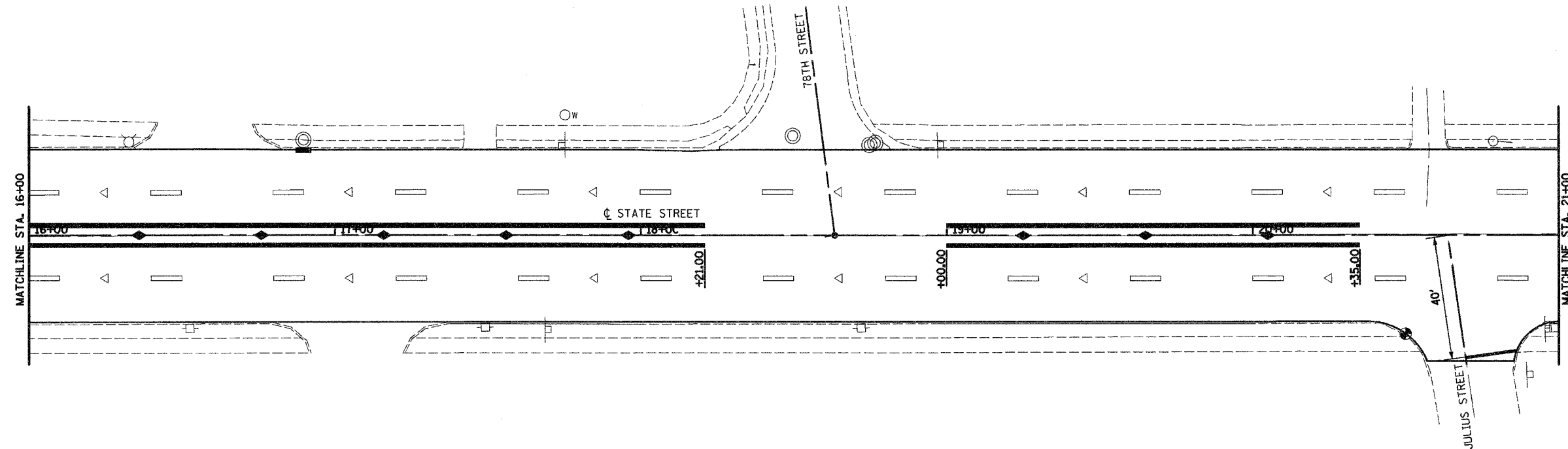
FROM DATE
 AREAS
 AREAS CHECKED
 NO.



- SIDEROAD PROFILES -

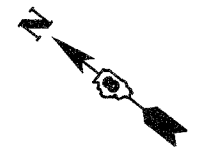
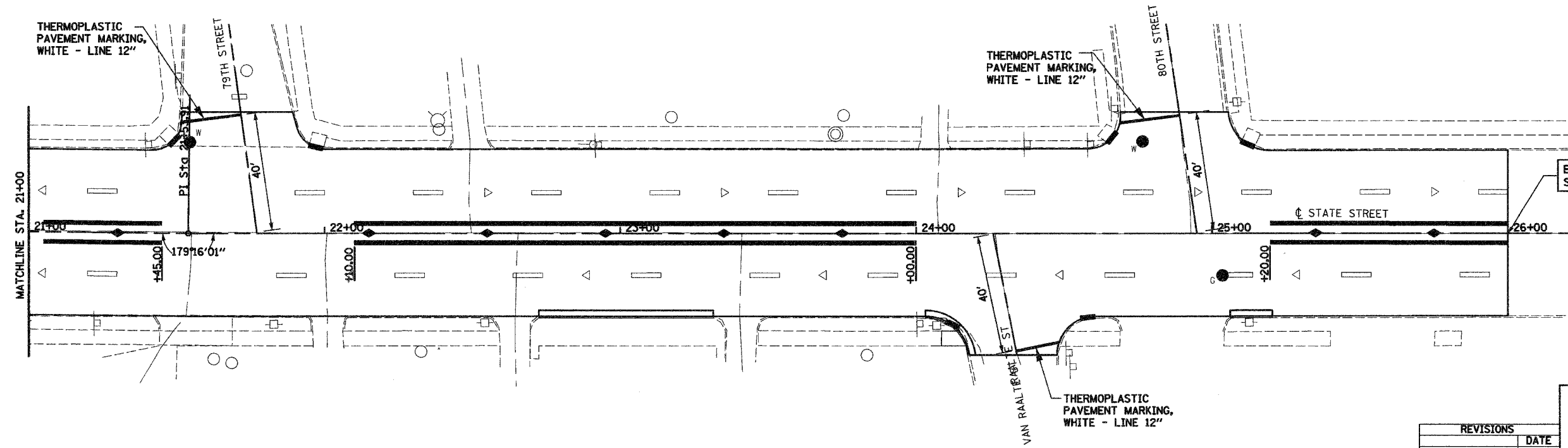
...:\drawing\pavement\pav11a.dwg 3/7/2008 10:37:20 AM

F.A.U. RTE.	SECTION	COUNTY	TOTAL SHEETS	SHEET NO.
9182	00-00186-05-RS	ST CLAIR	11	11
STA. 16+00		STA. 26+00		
FED. ROAD DIST. NO.	ILLINOIS FED. AID PROJECT			
CONTRACT NO. 97252				

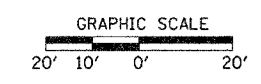


LEGEND

	4" WHITE THERMOPLASTIC SKIP DASH STRIPING (10' DASH - 30' SKIP) W/ WHITE RAISED REFLECTIVE PAVEMENT MARKER (80' C-C)
	4" DOUBLE YELLOW THERMOPLASTIC STRIPING W/ AMBER RAISED REFLECTIVE PAVEMENT MARKER (40' C-C)



END CONSTRUCTION STA. 26+00.00



REVISIONS	DATE

ILLINOIS DEPARTMENT OF TRANSPORTATION

PAVEMENT MARKING

SCALE: 1"=40'
DATE: 03-16-05

DRAWN BY: DEG
CHECKED BY: MEB

D:\WORK\11-PAVEMENT\11-05-03-16-05-26-37-21.dwg