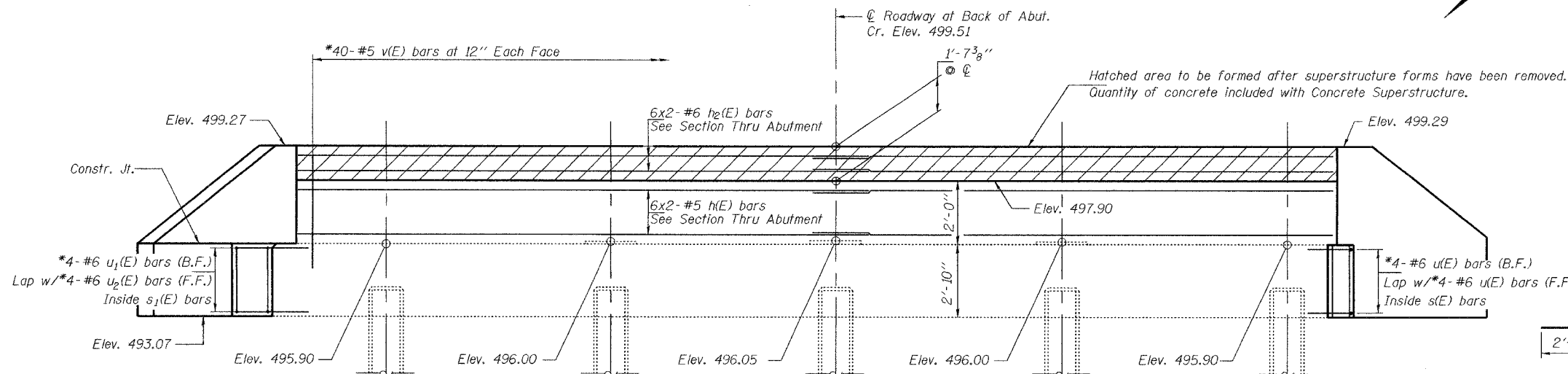


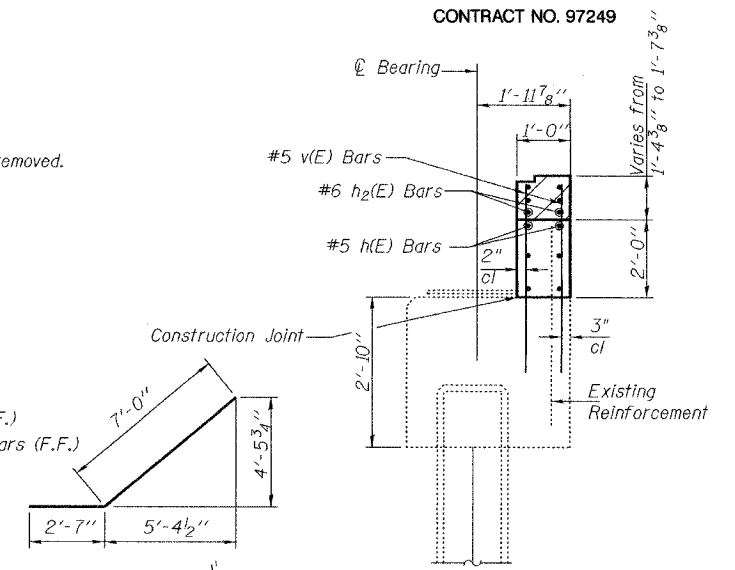
STATE OF ILLINOIS  
DEPARTMENT OF TRANSPORTATION

ROUTE NO. F.A.S. 738	SECTION *	COUNTY Greene	SHEETS 20	SHEET NO. 22	SHEET NO. 18 20 SHEETS
FED. ROAD DIST. NO. 7		ILLINOIS	FED. AID PROJECT-		

\*01-00072-00-BR CONTRACT NO. 97249



**ELEVATION**  
(Looking East)



**SECTION A-A**  
at Rt. angles

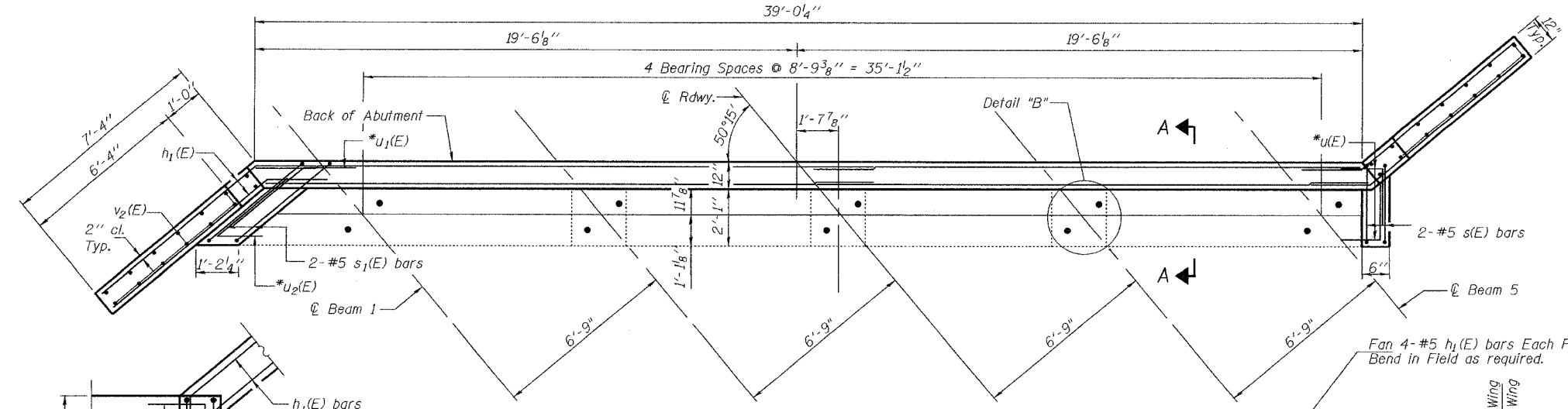
**MIN. BAR LAP**  
#5 bars = 1'-8"  
#6 bars = 2'-0"

**BILL OF MATERIAL**

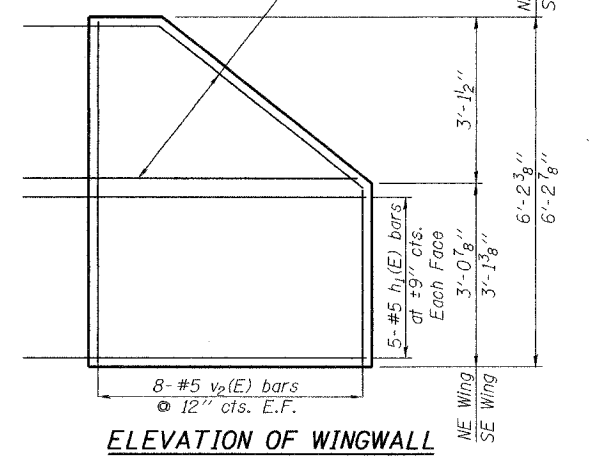
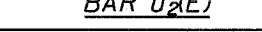
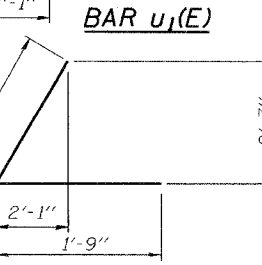
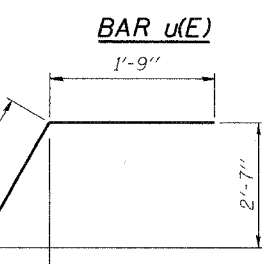
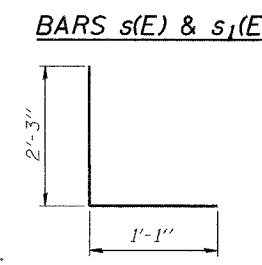
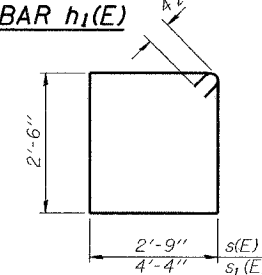
Bar	No.	Size	Length	Shape
h(E)	12	#5	20'-3"	
h1(E)	36	#5	9'-7"	
h2(E)	12	#6	20'-6"	
s(E)	2	#5	11'-3"	
s1(E)	2	#5	14'-5"	
u(E)	8	#6	3'-4"	
u1(E)	4	#6	5'-0"	
u2(E)	4	#6	5'-0"	
v(E)	80	#5	4'-4"	
v2(E)	16	#5	8'-10"	
Concrete Structures	Cu. Yd.	6.2		
Reinforcement Bars, Epoxy Coated	Pound	1650		
Structure Excavation	Cu. Yd.	24		

Reinforcement bars designated (E) shall be epoxy coated.  
For Detail "B" see sheet 14 of 20.  
Bars indicated thus 10 x 2-#5 etc. indicates 10 line of bars with 2 lengths per line.

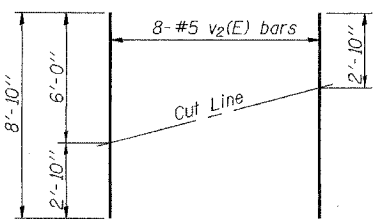
**EAST ABUTMENT**  
F.A.S. 738 OVER  
HURRICANE CREEK  
SECTION 01-00072-00-BR  
GREENE COUNTY  
STA. 144+72.46  
STR. NO. 031-3005



**PLAN VIEW**



**ELEVATION OF WINGWALL**



**FIELD CUTTING DIAGRAM**

Order v2(E) full length. Cut as shown and use remainder of bars in opposite face. Before cutting as shown verify field elevations and height of wall.

**NORTH CORNER DETAIL**

h1(E) bars above the cap shall extend into the backwall as shown on PLAN VIEW.

DESIGNED	ABG
CHECKED	ZBU
DRAWN	SMS
CHECKED	JFS

January 21, 2005  
EXAMINED *Thomas J. Demagalaki*  
PASSED *Ralph E. Anderson*  
ENGINEER OF BRIDGE DESIGN  
ENGINEER OF BRIDGES AND STRUCTURES