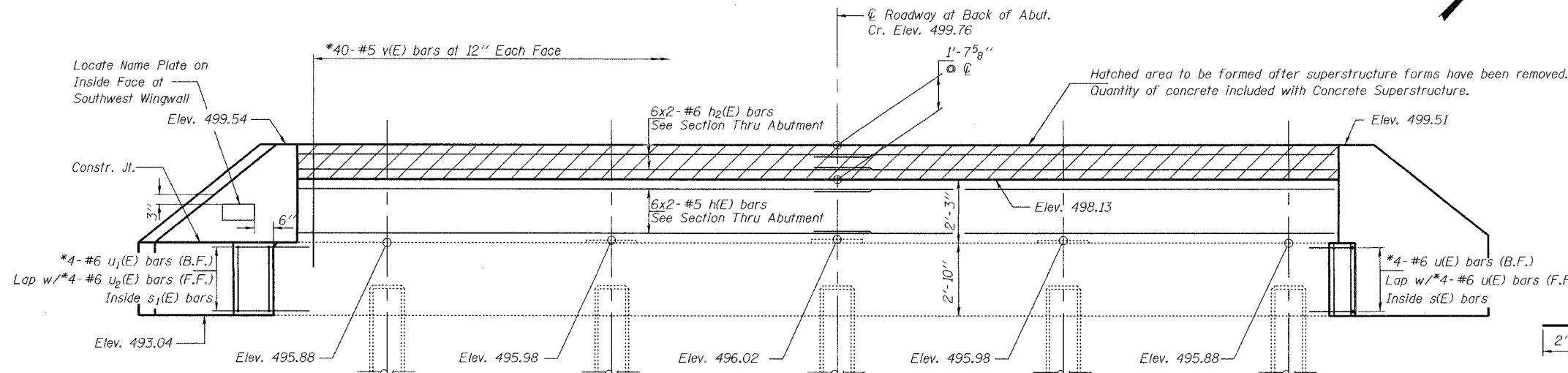


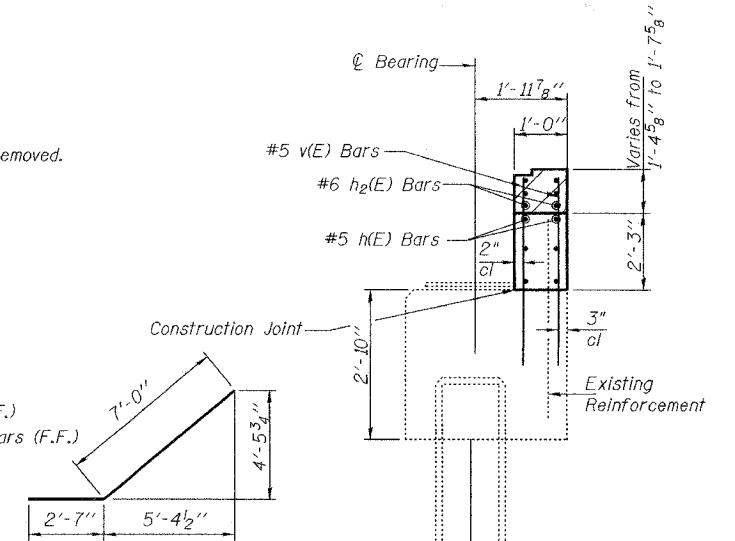
STATE OF ILLINOIS
DEPARTMENT OF TRANSPORTATION

ROUTE NO.	SECTION	COUNTY	TOTAL SHEETS	SHEET NO.
F.A.S. 738	*	Greene	26	21
FED. ROAD DIST. NO. 7	ILLINOIS	FED. AID PROJECT		
*01-00072-00-BR			CONTRACT NO. 97249	

SHEET NO. 17
20 SHEETS

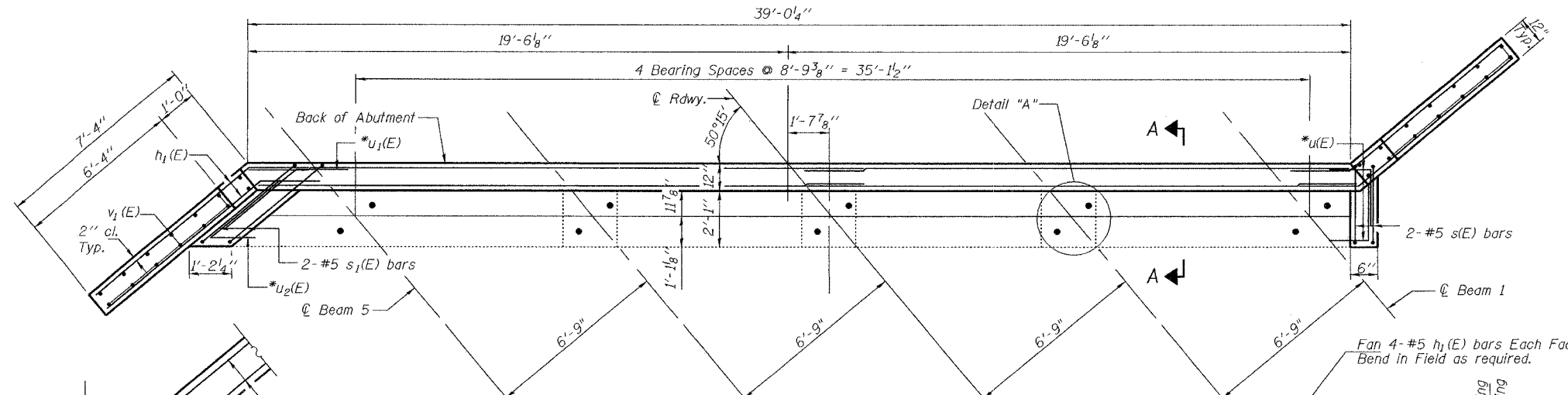


ELEVATION
(Looking West)

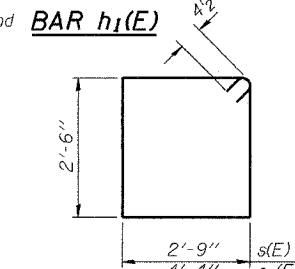


SECTION A-A
at Rt. angles

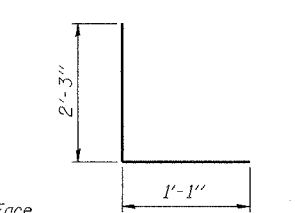
MIN. BAR LAP
#5 bars = 1'-8"
#6 bars = 2'-0"



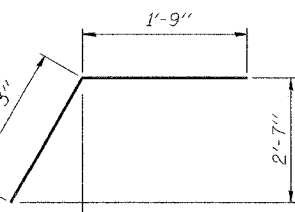
PLAN VIEW



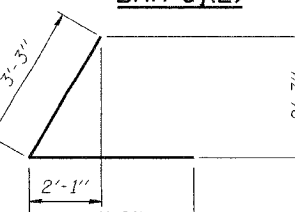
BARS s(E) & s1(E)



BAR u(E)



BAR u1(E)



BAR u2(E)

BILL OF MATERIAL

Bar	No.	Size	Length	Shape
h(E)	12	#5	20'-3"	—
h1(E)	36	#5	9'-7"	—
h2(E)	12	#6	20'-6"	—
s(E)	2	#5	11'-3"	□
s1(E)	2	#5	14'-5"	□
u(E)	8	#6	3'-4"	┌
u1(E)	4	#6	5'-0"	┌
u2(E)	4	#6	5'-0"	┌
v(E)	80	#5	4'-4"	—
v1(E)	16	#5	9'-3"	—
Concrete Structures		Cu. Yd.	6.7	
Reinforcement Bars, Epoxy Coated		Pound	1650	
Structure Excavation		Cu. Yd.	24	

Reinforcement bars designated (E) shall be epoxy coated.
For Detail "A" see sheet 14 of 20.
Bars indicated thus 10 x 2-#5 etc. indicates 10 line of bars with 2 lengths per line.

WEST ABUTMENT
F.A.S. 738 OVER
HURRICANE CREEK
SECTION 01-00072-00-BR
GREENE COUNTY
STA. 144+72.46
STR. NO. 031-3005

NORTH CORNER DETAIL

h1(E) bars above the cap shall extend into the backwall as shown on PLAN VIEW.

DESIGNED	ABG
CHECKED	ZBU
DRAWN	SMS
CHECKED	JFS

January 21, 2005
EXAMINED *Thomas J. Domagalaki*
ENGINEER OF BRIDGE DESIGN
PASSED *Ralph E. Anderson*
ENGINEER OF BRIDGES AND STRUCTURES

FIELD CUTTING DIAGRAM

Order v1(E) full length. Cut as shown and use remainder of bars in opposite face. Before cutting as shown verify field elevations and height of wall.

ELEVATION OF WINGWALL