

ROUTE	SECTION	COUNTY	TOTAL SHEETS	SHEET NO.
FAS 706	99-00087-00-RS	JASPER	2	1
		ILLINOIS	CONTRACT NO. 95431	

STATE OF ILLINOIS  
DEPARTMENT OF TRANSPORTATION  
DIVISION OF HIGHWAYS

PLANS FOR PROPOSED  
SURFACE TRANSPORTATION RURAL  
AND TRUCK ACCESS ROUTE PROJECT

SECTION 99-00087-00-RS JASPER COUNTY

F.A.S. 706

JOB NO. C-97-001-99

PROJECT NO. SR-706(131)

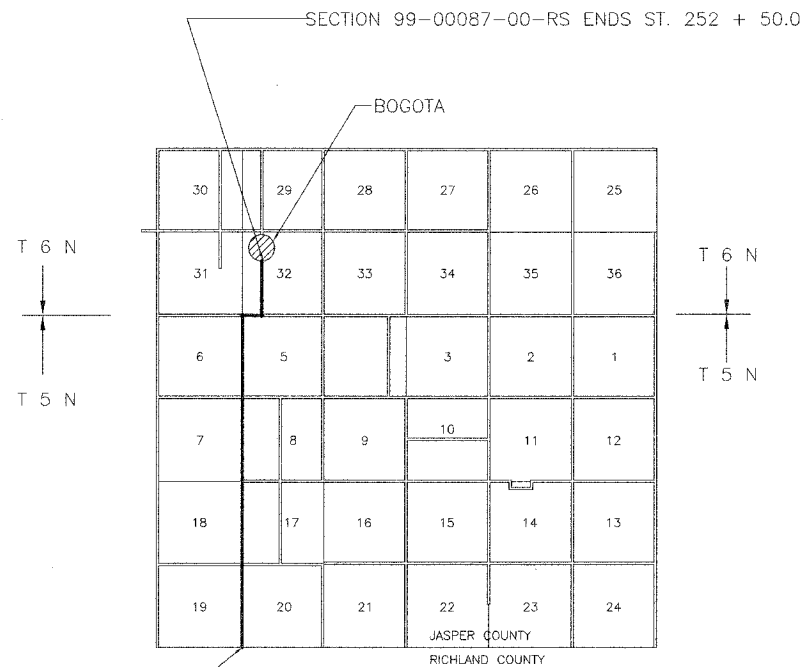
Joint Utility Locating Information for Excavators  
JULIE 1-800-892-0123

INDEX OF SHEETS

SHEET	ITEM
1	COVER SHEET
2	TYPICAL SECTIONS STANDARD 701001-01 STANDARD 701011-01 STANDARD 701301-02 STANDARD 701306-01 STANDARD 701311-02 STANDARD 702001-05 STANDARD 780001-01

SUMMARY OF QUANTITIES

QUANTITY	UNIT	ITEM	ICOO CODE NUMBER
2900	GALLON	BITUMINOUS MATERIALS (PRIME COAT)	40600100
117	TON	AGGREGATE (PRIME COAT)	40600300
5326	TON	BITUMINOUS CONCRETE SURFACE COURSE, SUPERPAVE, MIX "C", NS0	X4066414
4960	TON	LEVELING BINDER (MACHINE METHOD), SUPERPAVE NS0	X4066765
234	SQ YD	BITUMINOUS SURFACE REMOVAL (VARIABLE DEPTH)	44000030
96	TON	AGGREGATE SURFACE COURSE, TYPE B	40200800
1	L SUM	TRAFFIC CONTROL AND PROTECTION, STANDARD 701306	70100460
74272	FOOT	PAINT PYAVEMENT MARKING - LINE 4"	78001110



THE ACCEPTANCE OF THIS PROJECT IS BASED ON THE  
MINIMUM DESIGN CRITERIA FOR A FEDERAL-AID 3R TYPE  
IMPROVEMENT ON THE COUNTY HIGHWAY SYSTEM.  
*Maureen E. Kassel*  
DISTRICT ENGINEER OF LOCAL ROADS & STREETS

STATE OF ILLINOIS  
DEPARTMENT OF TRANSPORTATION  
DIVISION OF HIGHWAYS  
PASSED 4/15 20 05  
*Maureen E. Kassel*  
DIST. ENGINEER OF LOCAL ROADS  
APPROVED 4/15 20 05  
*Christine M. Reed*  
CHRISTINE M. REED, P.E.  
DEPUTY DIRECTOR OF HIGHWAYS  
REGION FOUR ENGINEER



THESE PLANS WERE PREPARED BY ME, OR A FULL  
TIME MEMBER OF MY STAFF, WORKING UNDER MY  
PERSONAL SUPERVISION.  
*Richard A. Patton*  
ILLINOIS REG. PROF. ENG. 38893  
LICENSE EXPIRES 11/30/05  
12871 EAST STATE HWY 33  
NEWTON, IL 62448  
PHONE 618-783-2915

4-13-05  
DATE

CONTRACT NO. 95431

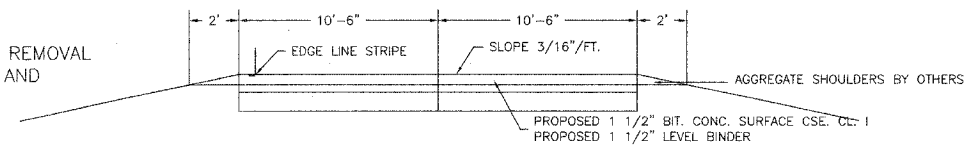
NET LENGTH SECTION 99-00087-00-RS = 25,100 Ft. = 4.754 Mi.

MAJOR COLLECTOR  
ADT = 450  
DESIGN SPEED = 50 MPH

ROUTE	SECTION	COUNTY	TOTAL SHEETS	SHEET NO.
F.A.S. 706	99-00087-00-RS	JASPER	2	2
		ILLINOIS	CONTRACT NO. 95431	

TYPICAL SECTION OF PROPOSED IMPROVEMENT

NOTE:  
BITUMINOUS SURFACE REMOVAL  
STA. 1+50 TO 2+00 AND  
252+00 TO 252+50



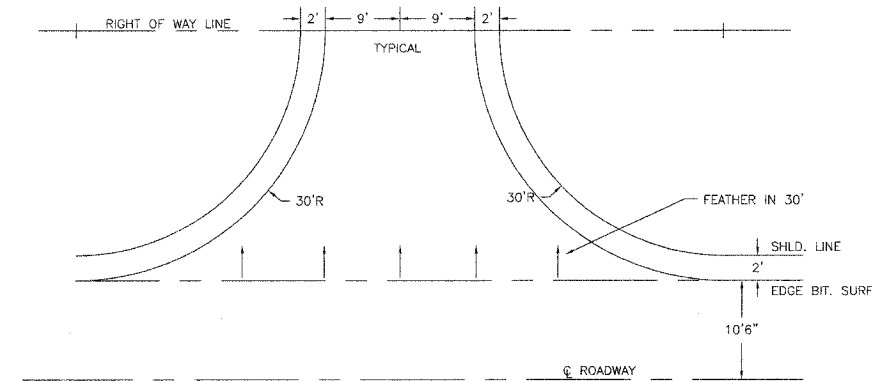
PAVEMENT DESIGN DATA

DESIGN PERIOD: 20 YEARS  
80,000 POUND DESIGN  
ROAD CLASSIFICATION: MAJOR COLLECTOR  
A.D.T. YEAR 2005: 450  
S.D.T. YEAR 2025: 600  
CLASS III ROAD

PAVEMENT STRUCTURE MATERIALS:  
5" BIT. CONC. REQUIRED FROM DEFLECTOMETER TEST

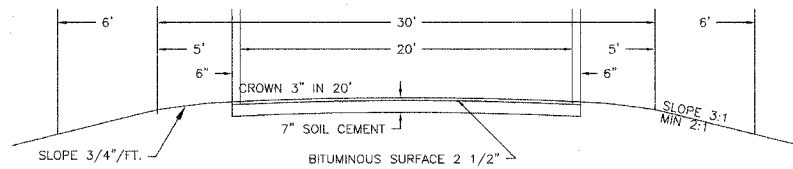
STA. 1+50.0 TO STA. 252+50.0

DETAIL OF SIDEROADS



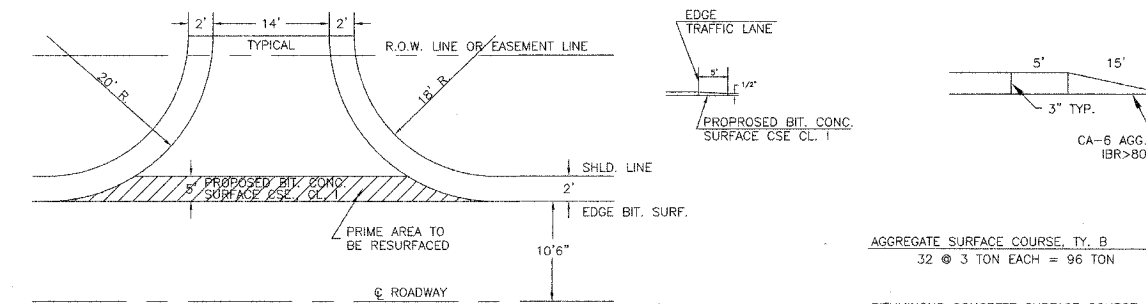
BITUMINOUS CONCRETE SURFACE COURSE  
10 @ 15 TON EACH = 150 TON  
TOTAL = 150 TON

TYPICAL SECTION OF EXISTING ROAD



STA. 1+50.0 TO STA. 252+50.0

DETAIL OF PRIVATE ENTRANCES



AGGREGATE SURFACE COURSE, TY. B  
32 @ 3 TON EACH = 96 TON  
BITUMINOUS CONCRETE SURFACE COURSE  
28 @ 8 TON EACH = 224 TON

PAINT PAVEMENT MARKING LINE 4"

CENTERLINE STRIPE  
Sta. 1+50 to 252+50.0 = 5,342 Foot

EDGE LINE  
Rt. & Lt. Sta. 2+00 to 252+50.0 = 49,720 Foot

NO PASSING ZONE STRIPING

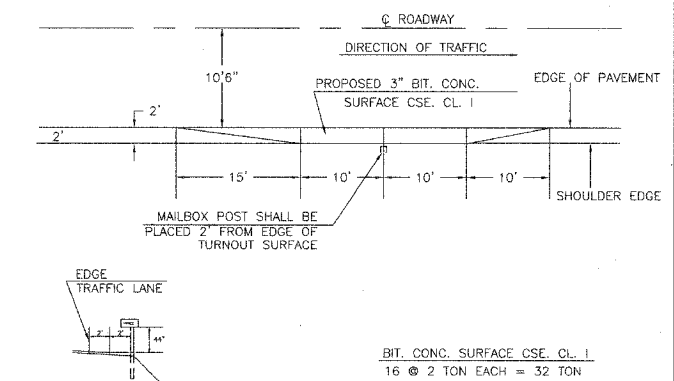
Lt. Sta. 1+50 to 11+00 = 950 Foot	Rt. Sta. 17+00 to 40+00 = 2300 Foot
Lt. Sta. 32+00 to 53+00 = 2100 Foot	Rt. Sta. 53+00 to 59+00 = 600 Foot
Lt. Sta. 63+00 to 70+00 = 700 Foot	Rt. Sta. 73+00 to 79+00 = 600 Foot
Lt. Sta. 80+00 to 87+00 = 700 Foot	Rt. Sta. 128+00 to 147+00 = 1900 Foot
Lt. Sta. 134+00 to 152+00 = 1800 Foot	Rt. Sta. 170+00 to 181+00 = 1100 Foot
Lt. Sta. 159+00 to 166+00 = 700 Foot	Rt. Sta. 198+00 to 223+30 = 2530 Foot
Lt. Sta. 184+00 to 191+00 = 700 Foot	
Lt. Sta. 207+00 to 232+30 = 2530 Foot	

Total Lt. = 10,180 Foot

Total Rt. = 9,030 Foot

TOTAL STRIPING QUANTITY  
Sta. 1+50 to 252+50.0 = 74,272 Foot

PROPOSED MAILBOX TURNOUT DETAIL



MAILBOX POST SHALL BE  
PLACED 2" FROM EDGE OF  
TURNOUT SURFACE

BIT. CONC. SURFACE CSE. CL. I  
16 @ 2 TON EACH = 32 TON