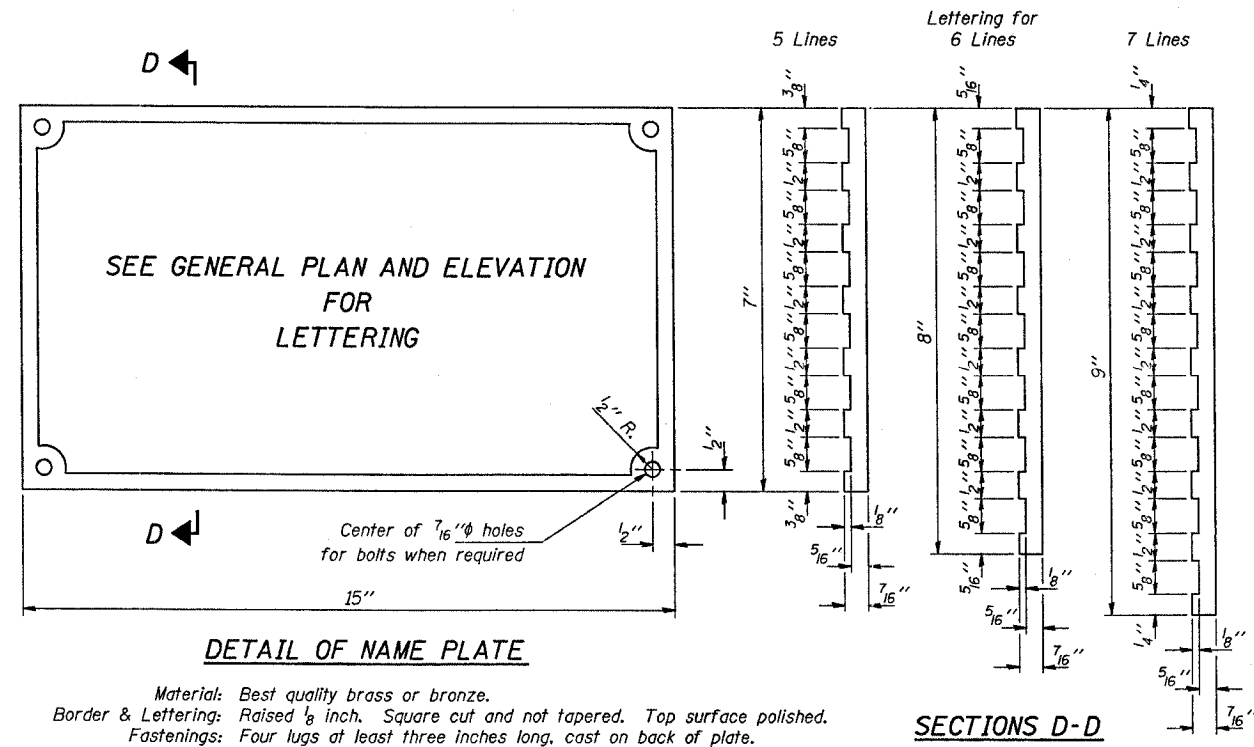


| NO. | SECTION | COUNTY | TOTAL SHEETS | SHEET NO. |
|-----------------------|---------|-----------|----------------------|-----------|
| T.R. 139 | * | EFFINGHAM | 13 | 10 |
| PUB. ROAD DIST. NO. 7 | | BLINDS | PUB. AND PROJECT NO. | |

* 02-02110-00-BR

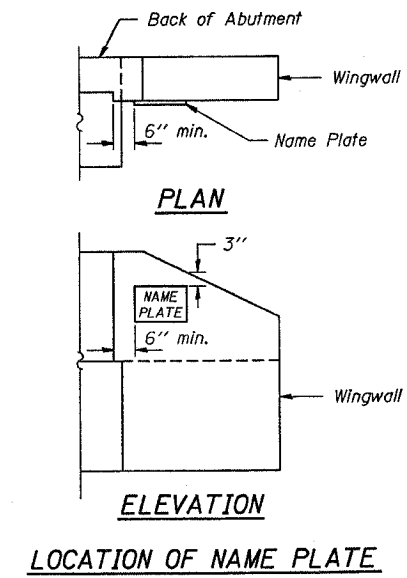
CONTRACT NO. 95422



DETAIL OF NAME PLATE

Material: Best quality brass or bronze.
 Border & Lettering: Raised $\frac{1}{8}$ inch. Square cut and not tapered. Top surface polished.
 Fastenings: Four lugs at least three inches long, cast on back of plate.

SECTIONS D-D



ELEVATION
LOCATION OF NAME PLATE

Illinois Department of Transportation
 PASSED November 1, 1995
Greg J. Kaspar
 Engineer of Bridge Design
 APPROVED November 1, 1995
Ralph E. Anderson
 Engineer of Bridges and Structures
 ISSUED 7-1-95

NAME PLATE
STANDARD CN